

(No Model.)

J. G. EBERHARD.

BRIDLE FRONT.

No. 306,726.

Patented Oct. 21, 1884.

Fig. 1.

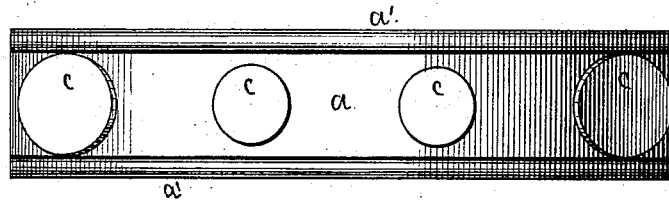


Fig. 2.

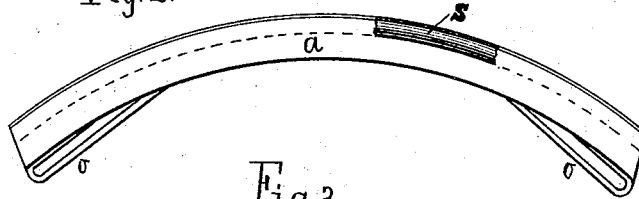


Fig. 3.

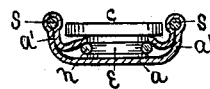


Fig. 4.

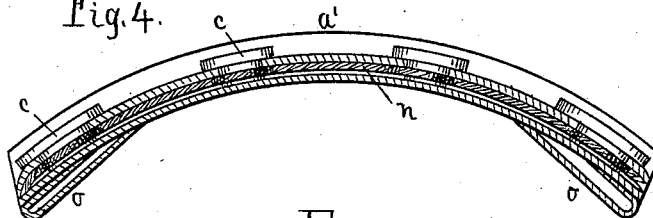


Fig. 5.

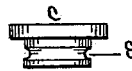
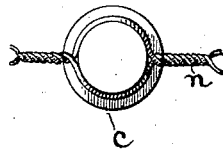


Fig. 6.



Attest.
Charles F Day
George Robinson

Inventor
John G. Eberhard
by Bradford Howland
his attorney

UNITED STATES PATENT OFFICE.

JOHN G. EBERHARD, OF AKRON, OHIO.

BRIDLE-FRONT.

SPECIFICATION forming part of Letters Patent No. 306,726, dated October 21, 1884.

Application filed February 18, 1884. (No model.)

To all whom it may concern:

Be it known that I, JOHN G. EBERHARD, a citizen of the United States, residing at Akron, Summit county, Ohio, have invented a new and useful Improvement in Bridle-Fronts, of which the following is a specification.

My invention consists of a bridle-front provided with rosettes of glass or china entirely uncovered by sheet metal, and formed with retaining-grooves, in combination with fastenings, as hereinafter more fully described.

In the drawings forming a part of this specification, Figure 1 is a front view of the bridle-front. Fig. 2 is an edge view of the same. Fig. 3 is a cross-section of the same. Fig. 4 is a longitudinal section of the same. Fig. 5 is a side elevation of one of the rosettes; and Fig. 6 represents the under side of one of the rosettes attached to the wires *n*, as hereinafter described.

The bridle-front *a* is formed with side flanges, *a' a'*, projecting beyond the faces of the rosettes, and serving to protect them from injury. Loops *o o* are strips of leather sewed to the under side of the bridle-front in the ordinary and well-known manner. The rosettes *c* are made entirely of glass or china, and formed with a circumferential groove, *e*, in which wires *n* are placed and twisted together on opposite sides of the rosettes. These wires

are inclosed between the two thicknesses of leather, as shown in Fig. 4, to retain the rosettes in place. One or more thin strips of sheet metal may also be inclosed in the leather with wires *n*, if desired, to give greater stiffness to the bridle-front. The rosettes *c* are inserted in holes made for that purpose in the face of the front piece. The wires *n* connect all the rosettes, being twisted together between them. It is not essential that they be so connected, but I deem it preferable, as it tends to keep the rosettes more firmly in position. Instead of inclosing wires *n* between the leather, they may be fastened, if desired, to the face of the front piece. By using such rosettes of brilliant-colored glass or china without any partial covering of sheet metal, which is liable to tarnish, a better ornamental effect is produced.

I claim as my invention—

A bridle-front provided with rosettes of glass or china wholly uncovered by sheet metal, and formed with retaining-grooves *e*, in combination with fastenings *n*, substantially as described.

JOHN G. EBERHARD.

Witnesses:

GEO. F. ROBINSON,
BRADFORD HOWLAND.