

(No Model.)

L. C. GLEASON.

BELT FASTENER.

No. 306,740.

Patented Oct. 21, 1884.

Fig. 1.

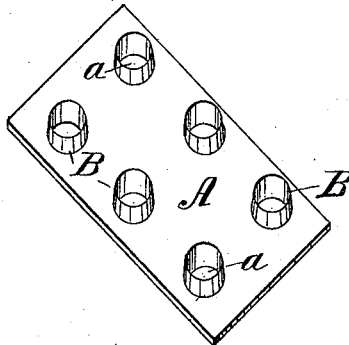


Fig. 2.

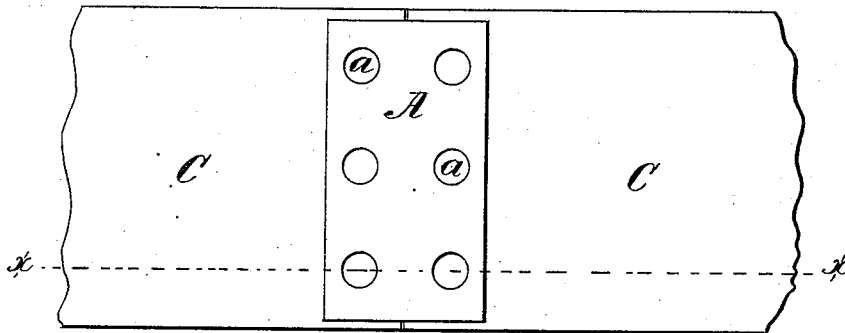
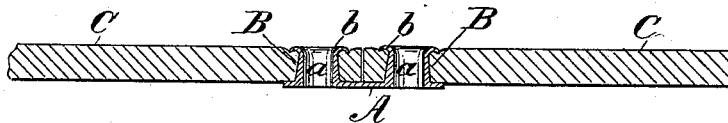


Fig. 3.



WITNESSES:

Charles Lurcott
C. Sedgwick

INVENTOR:

L. C. Gleason
BY *Munn & Co*
ATTORNEYS.

UNITED STATES PATENT OFFICE.

LOUIS C. GLEASON, OF TERRYVILLE, CONNECTICUT, ASSIGNOR TO
GLEASON & ALLEN, OF SAME PLACE.

BELT-FASTENER.

SPECIFICATION forming part of Letters Patent No. 306,740, dated October 21, 1884.

Application filed March 6, 1884. (No model.)

To all whom it may concern:

Be it known that I, LOUIS C. GLEASON, of Terryville, in the county of Litchfield and State of Connecticut, have invented a new and Improved Belt-Fastener, of which the following is a full, clear, and exact description.

The object of my invention is to provide a belt-fastener easily applied and reliable in use.

To this end my invention consists in a metal plate provided near each longitudinal edge with a row of punches adapted to be driven through the abutting ends of a belt, and to have the projecting ends of the said punches turned over and riveted down upon the opposite face of the belt, as will be more fully described hereinafter.

Reference is to be had to the accompanying drawings, forming part of this specification, in which similar letters of reference indicate corresponding parts in all the figures.

Figure 1 is a perspective view of one of my belt-fasteners. Fig. 2 is a plan view of one of said fasteners, represented as applied upon two ends of a belt; and Fig. 3 is a longitudinal section of the same on the line *x x* in Fig. 2.

A indicates a rectangular metal plate, having projecting from one face, near its longitudinal edges, rows of punches B. The holes *a* extend through to the opposite face of the plate. These punches are made slightly tapering upon the outside from the plate to their outer ends, as shown in Figs. 1 and 3, and the holes through the plate and punches are made smooth and of a uniform diameter by boring out or reaming, by which operation, also, the end edges of the punches are made thin, to adapt the punches to easily cut through the substance of the belt in applying the fastener.

In use, the two ends C of a belt are placed together, resting upon a block of wood. The belt-fastener is placed centrally over the point, and then, with a blow from a hammer, the

punches are driven through the material of the belt, the punches cutting their own way, and the cores cut from the belt passing up through the holes *a*, and the plate is solidly seated upon the belt. The belt is then placed with the plate downward, and with a suitable tool the edges *b* of the punches are turned over and riveted down, whereby an annular rim is formed bearing upon the belt, as shown in Fig. 3, holding the fastener firmly to place, and securing the ends of the belt securely together.

The fastener may be made of any suitable metal, but preferably of malleable iron, and will be made in sizes to suit different widths of belting, and may be constructed in any suitable manner.

With this fastener the belt is not unduly weakened, the hold of the same upon the material of the belt is greatly increased by the turned-over edges *b*, and the liability to tear away is very much lessened.

Having thus fully described my invention, I claim as new and desire to secure by Letters Patent—

1. A belt-fastener consisting of a plate of metal provided with one or more rows of hollow punches adapted to be driven through the belt ends, and the edges of the punches then turned down upon the belt, substantially as herein shown.

2. In a belt-fastener, the combination, with the metal plate, of a series of hollow punches of tapering form, substantially as herein shown and described.

3. The combination, with the belt C, of the metal plate A and punches B, the said punches having their ends *b* turned over upon the belt, substantially as shown.

LOUIS C. GLEASON.

Witnesses:

EDGAR TATE,
W. S. WALKER.