

(No Model.)

J. McLANE.
POST OFFICE BOX.

No. 342,217.

Patented May 18, 1886.

FIG. 1.

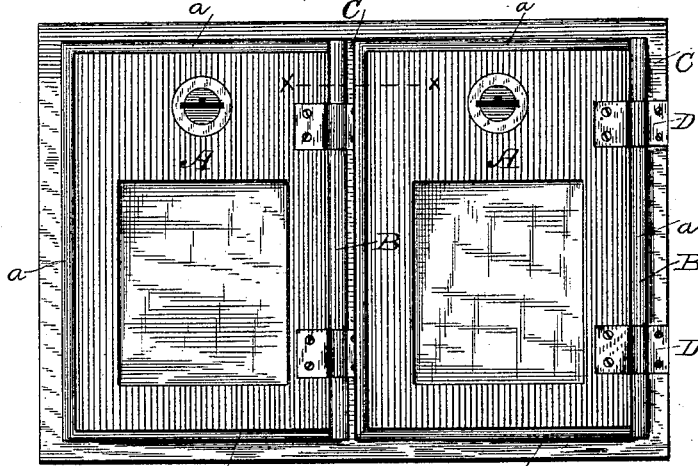


FIG. 2.

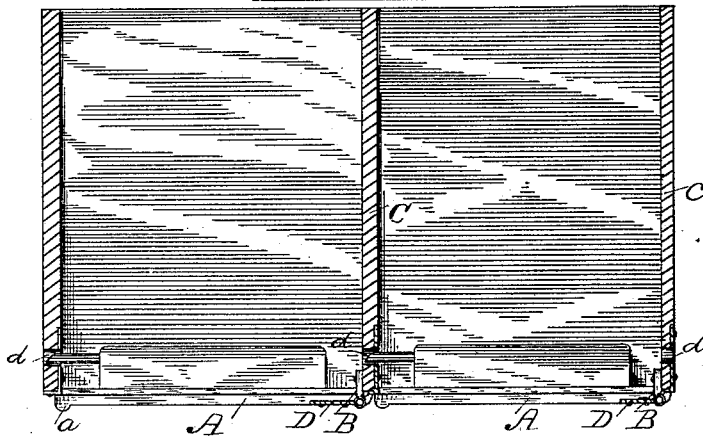


FIG. 3.

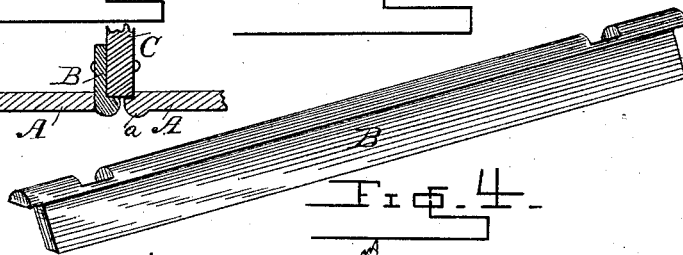
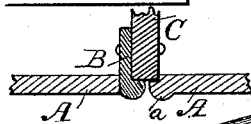


FIG. 4.

WITNESSES:

Josh Blackwood
R. H. Bois

John McLane
by W. M. Woodruff
Attorney

UNITED STATES PATENT OFFICE.

JOHN McLANE, OF MILFORD, NEW HAMPSHIRE.

POST-OFFICE BOX.

SPECIFICATION forming part of Letters Patent No. 342,217, dated May 18, 1886.

Application filed April 2, 1886. Serial No. 197,506. (No model.)

To all whom it may concern:

Be it known that I, JOHN McLANE, a citizen of the United States, residing at Milford, in the county of Hillsborough and State of New Hampshire, have invented certain new and useful Improvements in Post-Office Boxes; and I do hereby declare the following to be a full, clear, and exact description of the invention, such as will enable others skilled in the art to which it appertains to make and use the same.

My invention relates to post-office boxes, and its object is to dispense with a casing in which to hang the door, and also to provide a hinge for the door, which will serve as a strike-plate for the lock-bolt of the door of the adjoining box in the series.

The invention consists in attaching a narrow metallic plate to the side of each wooden partition in a series of boxes, hinging a metallic door provided with a projecting molding to said plate by a strap-hinge, in one leaf of which is formed a hole, and carrying that leaf over the edge and down the side of the partition and securing it thereto, the hole in the hinge-leaf being adapted to receive the lock-bolt of the door on the adjoining box.

Referring to the drawings, Figure 1 is an elevation of a series of boxes with the doors attached. Fig. 2 is a plan view of the same, partly in section. Fig. 3 is a detail illustrating the metallic plate to be attached to the partitions; Fig. 4, a similar view, and Fig. 5 an enlarged sectional view taken on line *x x* of Fig. 1.

In the drawings, A represents a metallic door, provided along its upper, lower, and front edges with a projecting molding, *a*.

B represents a narrow metallic plate, which is secured to the inside of the partition or frame C in such manner that its outer edge, which is rounded to correspond with the molding on the door, will stand out flush with that molding. The door is hinged to the plate B by a strap-hinge, D, let into the edge of the plate, so as to lie flush therewith. One leaf of the hinge passes over the edge of the partition C and down its side a short distance, to which it is secured. A hole, *d*, is formed in this leaf of the hinge in such position as to

come in range with and receive the lock-bolt on the door of the next adjoining box, and this arrangement is maintained throughout the whole series of boxes in the row, except of course the last box.

It will be understood that the lock is to be secured to the upper part of the door on the inner side, the key-cylinder of the lock extending through a hole in the door.

The door proper being of a size to fit snugly in the box, the molding around its edges prevents it from entering too far, while that on its front edge also serves to cover the outer edge of the partition.

In order to adapt the lock-bolt for ready entrance into the hole in the strike-plate, I bevel its end, as seen in Fig. 2.

Having thus described my invention, what I claim as new, and desire to secure by Letters Patent, is—

1. In a series of post-office boxes, the combination, with a partition, of a metallic plate secured to the inner side of the partition, a strap-hinge hinged in the outer edge of said plate, and a metallic door, one leaf of the hinge secured to the door and the other leaf having a hole formed in it and extending over the edge of the partition and down the side thereof, the hole in the hinge-leaf being so positioned as to receive the lock-bolt on the door of the adjoining box in the series, as described, and for the purpose stated.

2. In a series of post-office boxes, the combination, with a partition, of a metallic plate secured to the inner side of the partition, its outer edge being rounded and extending out flush with the molding on the door, a strap-hinge hinged in the outer edge of said plate, and a metallic door provided along its top and front edges with a projecting molding, one leaf of the hinge secured to the door and the other leaf having a hole formed in it and extending over the edge of the partition and down the side thereof, the hole in the hinge-leaf being so positioned as to receive the lock-bolt on the door of the adjoining box in the series, as described, and for the purposes hereinbefore set forth.

3. In a post-office box, a door provided along its upper, lower, and front edges with

a molding, in combination with a separate plate secured to the inside of the box frame or partition next to the unmolded edge of the door, the edge of the said plate rounded to correspond with the molding on the door, and the door and the plate secured together by strap-hinges, substantially as described.

In testimony whereof I affix my signature in presence of two witnesses.

JOHN McLANE.

Witnesses:

CHARLES F. FISK,

F. H. GOSS.