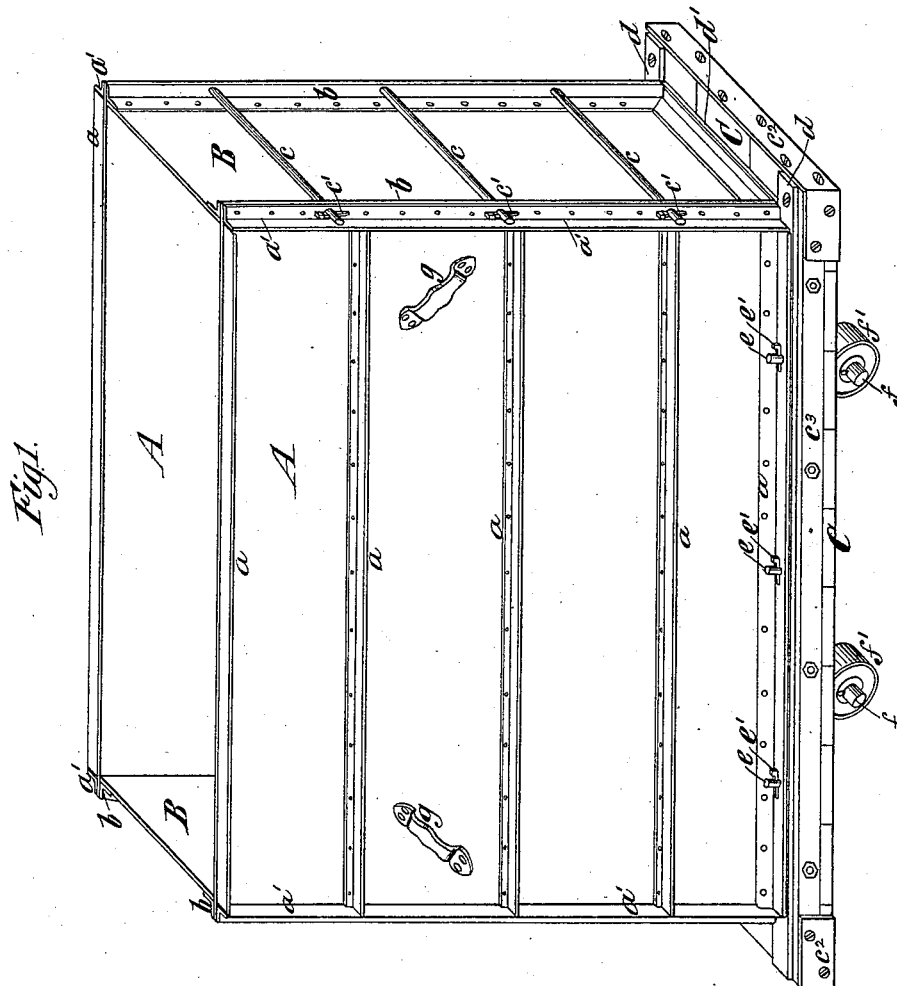


B. T. BABBITT.

SOAP FRAME.

No. 342,558.

Patented May 25, 1886.



Witnesses:

Olundgren
Ems Hunter

Inventor:

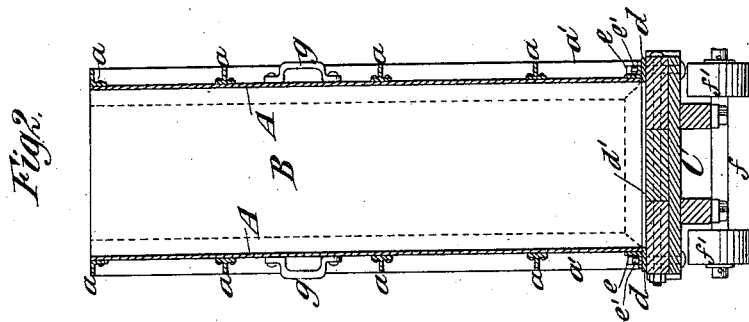
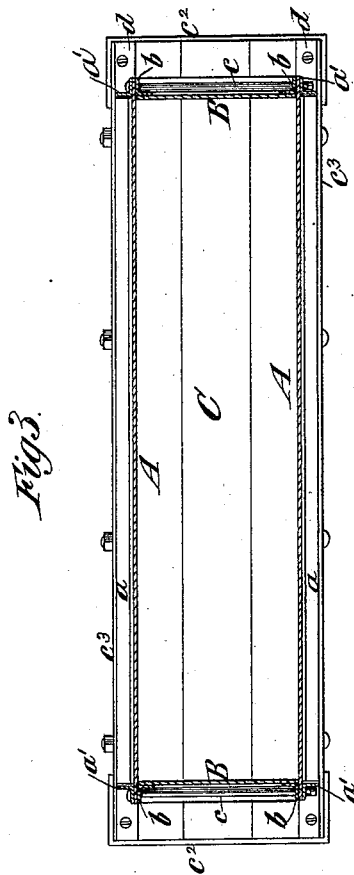
Benjamin T. Babbitt
by his attys
Brown & Hall

B. T. BABBITT.

SOAP FRAME.

No. 342,558.

Patented May 25, 1886.



Witnesses:

O. Sundgren
Emil Porter

Inventor:

Benjamin T. Babbitt
by his attys
Brown & Hall

UNITED STATES PATENT OFFICE.

BENJAMIN T. BABBITT, OF NEW YORK, N. Y.

SOAP-FRAME.

SPECIFICATION forming part of Letters Patent No. 342,558, dated May 25, 1886.

Application filed February 6, 1886. Serial No. 190,975. (No model.)

To all whom it may concern:

Be it known that I, BENJAMIN T. BABBITT, of the city and county of New York, in the State of New York, have invented a new and useful Improvement in Soap-Frames, of which the following is a specification.

My invention relates to the construction of soap frames in which the liquid soap is poured, in order to form it into a solid block prior to its being cut up into pieces or cakes of the required size. When such frames are composed wholly or in part of metal, the soap is chilled by coming in contact with the metallic surface, and by being solidified quickly is prevented from running out or escaping from the corners of the frame.

My invention consists in a frame of novel construction, hereinafter described, and pointed out in the claims, and in which the upright sides and ends of the frame are composed of metal plates suitably re-enforced by angle-irons.

In the accompanying drawings, Figure 1 is a perspective or isometrical view of a soap-frame embodying my invention. Fig. 2 is a vertical section transverse to the length thereof, and Fig. 3 is a horizontal section through the upright sides and ends of the frame.

Similar letters of reference designate corresponding parts in the several figures.

A A and B B designate the upright sides and ends which form a rectangular frame or casing supported upon a suitable base portion, C. The sides and ends consist of wrought-iron or other metal plates, and in order to give them sufficient stiffness and prevent their bulging by the weight of soap within the frame when it is filled I have represented the sides as provided with horizontally-extending angle-iron re-enforcements *a*, and I have also represented at the corners vertical angle-iron re-enforcements *a'*, secured to the sides A, and similar vertical angle-iron re-enforcements, *b*, secured to the ends B.

The sides and ends of the frame are separable, so that they may be readily removed from the block of solid soap after it has cooled in the frame, and in this example of the invention the sides and ends are connected by headed rods or bolts *c*, which pass through the angle-irons *a' b'* and are provided with suit-

able keys *c'*, or other means of tightly drawing the sides A upon the ends B.

As here represented, the base portion C of the frame is composed of wood re-enforced by suitable plates, *c² c³*, and upon its upper surface are longitudinal and transverse bearers or bearing-strips *d d'*, which are of metal, and upon which the upright sides and ends A B of the frame are supported. The upright sides and ends are also separably connected with the base portion C, and in this example of my invention this connection is formed by studs or pins *e* projecting upward from the base portion C and entering holes in the lowermost horizontal angle-irons, *a*, of the sides A. The upright portions of the frame are locked to the base portion C by keys *e'*, inserted through the pins or studs *e*, or by other suitable means. The base portion may be likewise provided with suitable axles, *f*, on which are wheels or trucks *f'*, by which the frame is supported, and which provide for the movement of the frame, empty or filled with soap, from place to place.

I have represented the side portions, A, of the frame as provided with handles *g*, whereby they may be readily handled in removing them from and combining them with the other parts of the frame.

A soap-frame of the construction above described may be made of comparatively light or thin metal plates and yet have the required strength and stiffness, and inasmuch as all the upright portions of the frame are of metal the outermost portions of the soap poured into the frame will be rapidly chilled by contact with the metal plates and will not be allowed to escape at the corners or joints of the frame. The re-enforcements of the plates may be partly of single angle-iron and partly of double angle or T iron.

What I claim as my invention, and desire to secure by Letters Patent, is—

1. The combination, in a soap-frame, of a base portion, and a rectangular frame portion or casing composed of separable metallic sides and ends, by contact with which the soap will be chilled and solidified, and thereby prevented from escaping at the corners and joints, substantially as herein described.

2. The combination, in a soap-frame, with

a base portion, of upright metallic sides and ends separably connected, and having at the corners vertical re-enforcements of angle-iron, substantially as herein described.

3. The combination, in a soap-frame with a base portion, of upright metallic end portions, and upright metallic side portions provided with horizontal angle-iron re-enforcements, and at the ends provided with vertical angle-iron re-enforcements, and separably connected with the end portions, substantially as herein described.

4. The combination, in a soap-frame, of a rectangular frame or casing composed of upright metallic sides and ends separably connected together, and a base portion, of wood, having upon its top longitudinal and transverse metallic bearing-strips on which the upright sides and ends are supported, substantially as herein described. 15

B. T. BABBITT.

Witnesses:

JOHN SHERIDAN,
R. MCGOVERN.