

(No Model.)

E. DAWSON.
FEED BAG FOR HORSES.

No. 342,951.

Patented June 1, 1886.

Fig. 1.

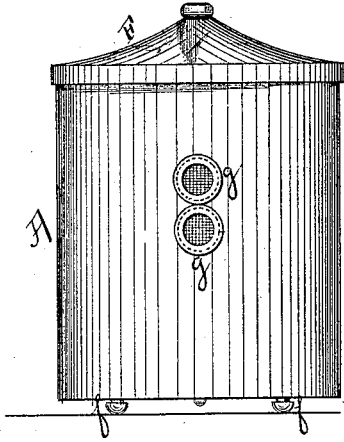


Fig. 2.

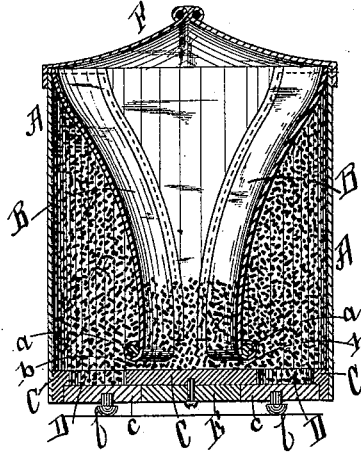


Fig. 3.

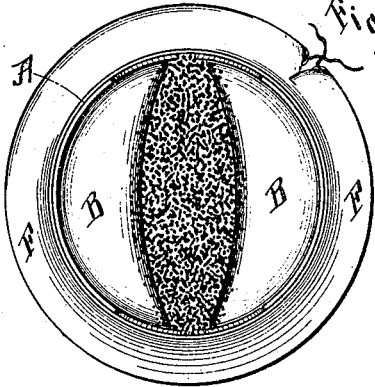


Fig. 4.

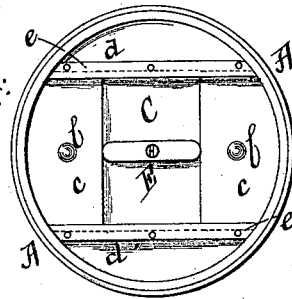
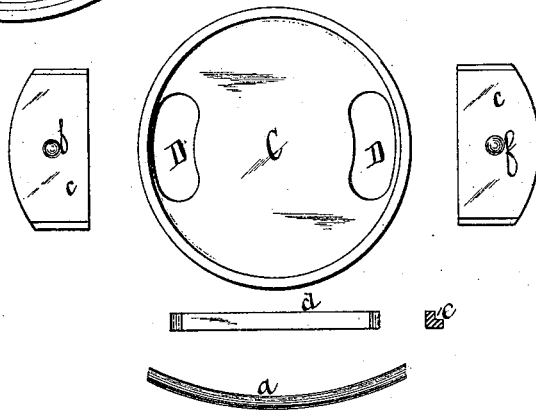


Fig. 5.



WITNESSES:

George W. Borchers.
B. T. Vetterlein

INVENTOR

Edward Dawson,
BY Joseph L. Levy
his ATTORNEY.

UNITED STATES PATENT OFFICE.

EDWARD DAWSON, OF BROOKLYN, NEW YORK.

FEED-BAG FOR HORSES.

SPECIFICATION forming part of Letters Patent No. 342,951, dated June 1, 1886.

Application filed March 30, 1886. Serial No. 197,102. (No model.)

To all whom it may concern:

Be it known that I, EDWARD DAWSON, a citizen of the United States, residing at Brooklyn, in the county of Kings and State of New York, have invented a new and useful Feed-Bag for Horses, of which the following is a specification.

My invention relates to an improvement in feed-bags in which oats are placed in the bag from the bottom while the bag is inverted, which causes them to run into two chambers or pockets arranged on the two sides of the bag, and when the bag is again righted the oats fall by gravity through an opening in the lower part of said pockets, thus giving a constant level of oats.

It is well known in the ordinary feed-bags unless a constant elevation of the bag is kept up by an attendant the level of the oats continually decreases, and the horse, in order to obtain his feed, throws his head upward by a sudden jerk, scattering the oats all around him, entailing a loss, and sometimes throwing the bag entirely off his nose.

The object of my invention is to provide a means whereby the loss and consequent discomfort sustained by a horse "throwing his oats" is obviated; and I attain this object in the manner illustrated in the accompanying drawings, in which—

Figure 1 is a side elevation; Fig. 2, the same in section; Fig. 3, a top view with the closing top spread open; Fig. 4, a bottom view, and Fig. 5 various detached parts.

Similar letters refer to similar parts throughout the several views.

A is the bag, which is usually made of canvas.

B B are two chambers or pockets, permanently fixed to the side walls of the bag A. These pockets could be formed by fixing a smaller bag within the large one, A, but the construction shown in the drawings is the one I prefer to use. At the bottom of the pockets B B, I sew in semicircular pieces of wood or any other stiff material, *a a*, which maintain the pockets B in their semicircular position and also maintain the small opening between the bottom C and the pockets B, as shown at *b*, Fig. 2. These pockets should be made far enough apart to accommodate any side mo-

tion of the horse's jaw while eating. It will be noticed that the central compartment formed by the pockets B B and the bag A is a gradually-increasing ellipse, thus accommodating itself to the construction of the horse's head.

D D are two holes cut in the bottom C, through which the oats are poured into the pockets B B. These holes can be of any desired size, and must be so placed that they do not extend farther toward the center than the inner ends of the stiffening-pieces *a a* of the pockets B B, so that the oats can only enter into the pockets B B, and not into the bag A.

c c are sliding doors, which cover the holes D D, and are held in position by the knob E, thus preventing the oats from falling out.

Across the bottom C are placed two guides, *d d*. These guides are provided with grooves *e e*, in which the doors *c c* run. The bottom C can be made of iron, on which the guides *d d* could be cast.

When it is desired to fill the bag, the closing top F is tightly closed. The bag is then inverted, the knob E is turned lengthwise of the bag, the doors *c c* are pulled back by means of the pins *f f*, and the oats poured into the pockets B B. When this is done, the doors *c c* are shoved back and locked, after which the bag can be righted. When it is desired to feed the horse, the closing top is spread open and the bag suspended in a fixed position by any of the well-known means.

The breathing-holes *g g* can be placed in any part of the front of the bag, so as not to interfere with the pockets B B.

Having thus described my invention, what I claim, and desire to secure by Letters Patent, is—

In a feed-bag, the combination of the bag A, side pockets, B B, provided with semicircular stiffening-pieces *a a*, the bottom C, provided with holes D D, through which the oats are to be poured, doors *c c*, guides *d d*, knob E, and closing top F, all constructed and operating in the manner before shown and described.

EDWARD DAWSON.

Witnesses:

HENRY L. BREVOORT,
M. E. STODDARD.