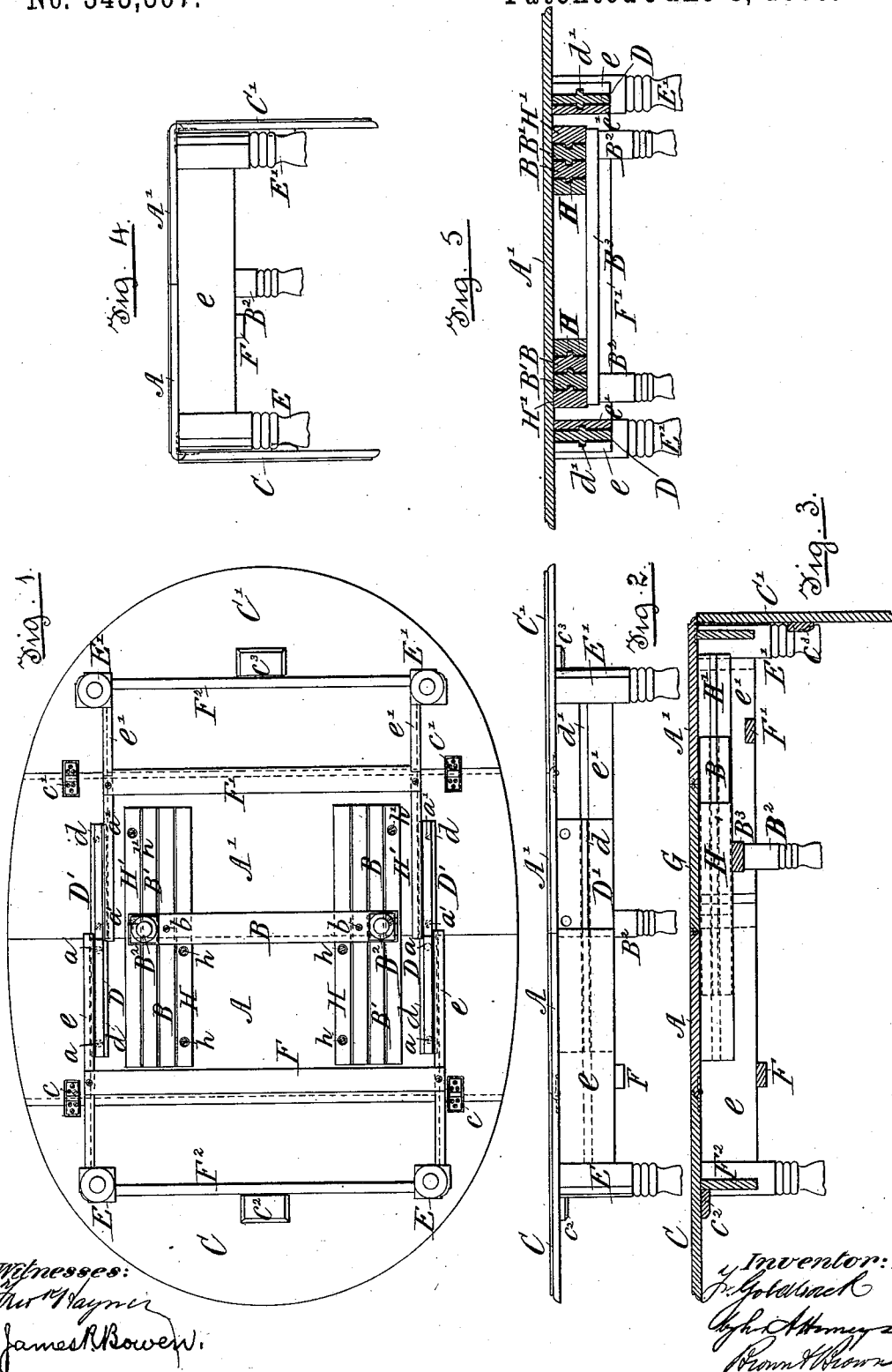


(No Model.)

F. GOLDBACH.
EXTENSION TABLE.

No. 343,307.

Patented June 8, 1886.



UNITED STATES PATENT OFFICE.

FERDINAND GOLDBACH, OF BROOKLYN, NEW YORK.

EXTENSION-TABLE.

SPECIFICATION forming part of Letters Patent No. 343,307, dated June 8, 1886.

Application filed March 17, 1883 Serial No. 88,520. (No model.)

To all whom it may concern:

Be it known that I, FERDINAND GOLDBACH, of the city of Brooklyn, in the county of Kings and State of New York, have invented certain new and useful Improvements in Extension-Tables; and I do hereby declare that the following is a full, clear, and exact description of the same.

The object of my invention is to provide for the closing up of a slide extension-table within a smaller space than has heretofore been found practicable.

My invention consists in a novel combination of parts in an extension-table, particularly hereinafter described, and pointed out in the claim; but to more fully comprehend my invention, reference must be had to the accompanying drawings, in which similar letters of reference indicate like parts, and where—
Figure 1 is an inverted plan of a table illustrating my invention with drop-leaves spread, but no extension-leaves in place. Fig. 2 is a side view corresponding with Fig. 1. Fig. 3 is a longitudinal section with one drop-leaf spread and the other down, and with one extension-leaf inserted. Fig. 4 is a side view of table closed up and both drop-leaves down. Fig. 5 is a transverse section.

A and A' designate, respectively, the two head-leaves, which, except that they have hinged to them the drop-leaves C C', and do not have the legs rigidly attached, are like the head-leaves of an ordinary slide-extension table—that is to say, they are fitted with the ordinary system of slides, H H' and B B'. The one A has rigidly secured to it by means of screws h h, or in any other desired manner, the inner pair of slides, H H, and the one A' has rigidly attached to it by the screws h' h', or otherwise, the outer pair of slides, H' H', and between these rigidly-attached slides the loose extension-slides B B and B' B' work, the whole being tongued and grooved and working the one within the other, in a similar manner to those at present in use. A cross-bar, B³, to which the center legs, B² B², are attached, extends across the bottom of these slides, and may be attached to either of the loose slides B B or B' B' by screws b b, or in any other suitable manner, but is shown in the drawings as attached to the inner pair, B B.

D D' designate slides, which are secured to

the head-leaves A and A', near their outer ends, by means of screws a a', or in any other desired manner. The slides on one head-leaf are in line with those on the other head-leaf, and all are provided with tongues d d on their inner and outer sides, the tongues on the outer sides receiving the slides e e for the legs E E at one end of the table, and those on the inner sides receiving the slides e' e' for the legs E' E' at the other end of the table. The legs are rigidly attached to these slides, and each pair of legs is braced together by a cross-bar, F². The slides e e are braced together by cross bar or brace F, and those e' e' by a cross-bar, F'. The cross-bars F F' are arranged below the extension-slides H H' and B B', so that they will pass without interference, and the bar F is arranged low enough for the slides e' e' to pass over it, when the legs are drawn in and the drop-leaves lowered. These slides e e and e' e' are provided with grooves d' d', to work or slide upon the inner and outer tongues, d d, of the slides D D', and they and the legs E E' slide under the drop-leaves to support the latter when spread. It will be seen in Figs. 1 and 5 that the said slides e e and e' e' are outside and quite independent of the extension-slides.

The table is shut up to its shortest length by removing the extension-leaves and pushing the head-leaves A A' together on the extension-slides H H' B B', and then pushing in the legs E E' E' and their slides e e e' e' on the slides D D'. If it be desired to extend the table by simply spreading the drop-leaves, the said leaves are raised and the legs and their slides pulled out under the said leaves to hold them up. If it be desired to further extend the table, the head-leaves A A' are pulled apart on their slides H H' B B', the legs E E E' E' being drawn out with them, and one or more of the extension-leaves G are put in.

It has been before mentioned that the extension-slides H H' B B' and the slides e e e' e', which support the drop-leaves, are independent of each other. By their arrangement in the manner described with the braces F F' of the drop-leaf slides e e e' e' below the extension-slides, the two sets of slides will work, each in its own way, without interference with each other.

I am aware that it is not new to employ in a table a single center leaf with drop-leaves

hinged to its opposite sides and legs which are connected by slides with the center leaf, so that the legs and slides may be drawn out to support the drop-leaves when raised.

5 I am also aware that it is not new to employ in an extension-table two separable head-leaves which are supported by a fixed frame when pushed close together, and slides provided with legs and capable of extension to
10 support the head-leaves when separated, drop-leaves hinged to the outer edges of the head-leaves, and arms or supports pivoted to the sliding frame which supports the head-leaves and adapted to be swung horizontally outward
15 under the drop-leaves when the latter are raised.

I do not claim either of the above constructions as included in my invention.

What I claim as my invention is as follows:

In an extension-table, the combination of two 20 separable head-leaves, A A', and extension-slides connecting them, a cross-bar, B³, extending between and connected with the extension-slides between their ends and provided with center legs, B², drop-leaves C C', hinged one 25 to each of said separable head-leaves, drop-leaf-supporting slides connected with the head-leaves and to be extended under the drop-leaves when the latter are raised, and legs fixed to and movable with the drop-leaf-supporting 30 slides, and serving to sustain them and the drop-leaves when raised, substantially as herein described.

FERDINAND GOLDBACH.

Witnesses:

FREDK. HAYNES,
ED. L. MORAN.