

G. L. TYLER.  
LEATHER SPLITTING MACHINE.

No. 345,007.

Patented July 6, 1886.

Fig. 1.

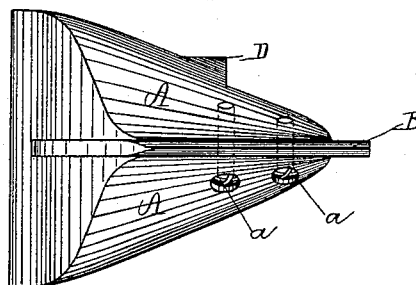


Fig. 2.

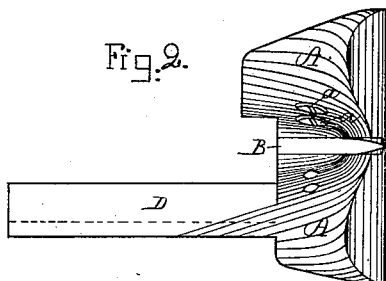


Fig. 4.

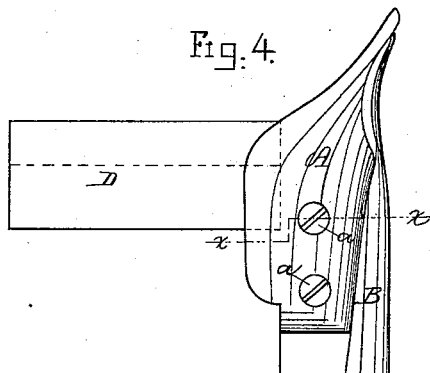


Fig. 3.

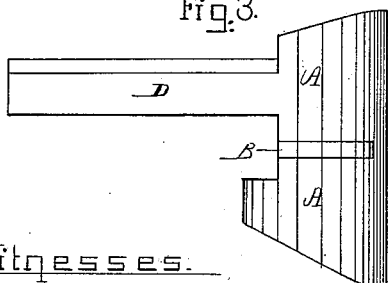


Fig. 5.

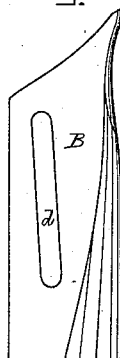
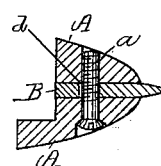


Fig. 6.



Witnesses.

*Milan F. Stevens.*  
*Robert Wallaer.*

Inventor.

*George L. Tyler*  
*by W. A. Macleod*  
*his atty*

(No Model.)

2 Sheets—Sheet 2.

G. L. TYLER.

LEATHER SPLITTING MACHINE.

No. 345,007.

Patented July 6, 1886.

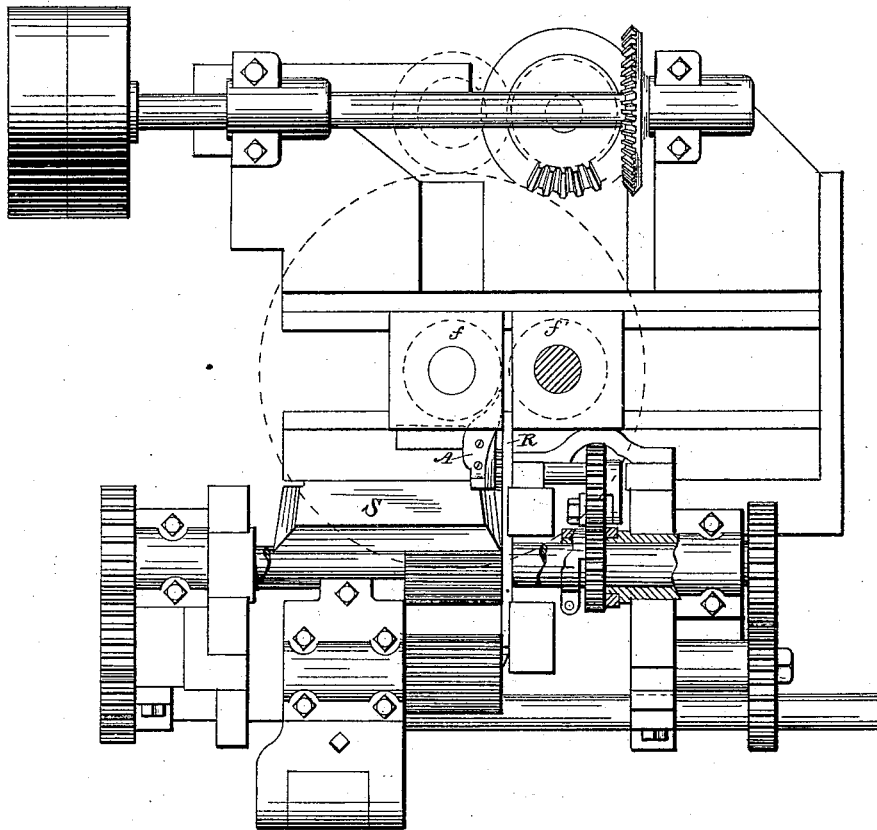


Fig. 7.

Witnesses:

*E. Smith*  
*Jas. W. Holman.*

Inventor:

*G. L. Tyler,*  
*by Henry C. Carter*  
*Att. atty.*

# UNITED STATES PATENT OFFICE.

GEORGE L. TYLER, OF LYNN, MASSACHUSETTS, ASSIGNOR TO THE TYLER-BRADFORD MACHINE COMPANY.

## LEATHER-SPLITTING MACHINE.

SPECIFICATION forming part of Letters Patent No. 345,007, dated July 6, 1886.

Application filed August 27, 1885. Serial No. 175,451. (No model.)

### *To all whom it may concern:*

Be it known that I, GEORGE L. TYLER, of Lynn, county of Essex, State of Massachusetts, have invented certain new and useful  
5 Improvements in Leather-Splitting Machines, of which the following is a full, clear, concise, and exact description, taken in connection with the drawings accompanying and forming a part hereof, in which—

10 Figure 1 is a plan view. Figs. 2 and 3 are end views. Fig. 4 is a side view. Fig. 5 is a detail. Fig. 6 is a section on line *xx*, Fig. 4. Fig. 7 is a plan view, partly in horizontal section, of a leather-splitting machine, showing my opener in operative relation to the  
15 other parts of the machine.

In leather-splitting machines of the kind shown and described in Letters Patent of the United States granted to me, dated June 2,  
20 1885, No. 319,357, a flaring opener is used for the purpose of spreading the halves of the piece of leather which has been cut to a hinge at one edge, and bringing them into the same plane, ready to be passed between  
25 the vertical pressing-rolls. This opener is situated directly behind the splitting-knife, and is run with one end thereof, and it is desirable that the small end of the opener should receive the leather immediately after it passes  
30 the end of the knife. The knife in such a machine, after use, becomes ground down, and must be set forward, and so is moved away from the opener; and the object of my invention is the construction of an opener which  
35 shall be adjustable to the knife—that is, which may be lengthened out in proportion to the grinding away of the knife; and it consists of the opener of peculiar construction herein-after more fully described, and which will be  
40 readily understood from the following description and the accompanying drawings.

My improved opener consists of a block having two flaring sides, *A A*, between which is a longitudinal slot for the reception of an  
45 adjustable divider, *B*, said block or opener being provided with a shank, *D*, by which it may be secured in position in the machine. The outer edge of the divider *B* is beveled on both sides to form a sharp or thin edge, the  
50 angles of which are most acute in front, or at

the end of the divider to which the pieces of split leather are first presented. The said divider *B* is provided with a longitudinal slot, *d*, through which pass the set-screws *a a*, by which the divider is held in place in the  
55 opener.

Fig. 7 is a plan view, partly broken away, of a leather-splitting machine fully shown and described in my application, No. 180,288, filed  
60 October 19, 1885. In this figure the opener *A* is shown just rearward of the splitting-knife *S* and adjacent to the edge-guide *R*.

The leather to be split passes between feeding-rolls to the splitting-knife, and after the split piece of leather has passed the said knife  
65 the divider enters between the two flaps of leather, which now passes forward, so that the said flaps are spread apart and into a vertical plane by the flaring sides *A A* of the opener, and are thus brought into proper position to  
70 enter between the vertical pressing-rolls *ff'*, to be smoothed out, as more fully described in my application above referred to.

The divider *B* is adjusted so as to have its front end adjacent to or in contact with the  
75 splitting-knife *S*, the latter having a recess for the reception of the said end of the divider. As the said knife is worn away by use and grinding, it is necessary to adjust the same forward or toward the feeding-rolls to  
80 keep the splitting-edge of the said knife in proper relation to the said rolls, and it is also desirable to adjust or extend the divider to keep the front end of the latter close to the  
85 said knife. This adjustment or extension of the divider is effected simply by loosening the set-screws *a a*, sliding the divider forward toward the knife *S*, and then again tightening the said screws.

What I claim is—

90 An opener for leather-splitting machines, provided with flaring sides, and a central extensible divider, forming the small end of the opener and adjustably secured thereto, whereby the opener may be lengthened, for the purpose and substantially as described.

GEORGE L. TYLER.

Witnesses:

WM. A. MACLEOD,  
M. A. THOMPSON.