

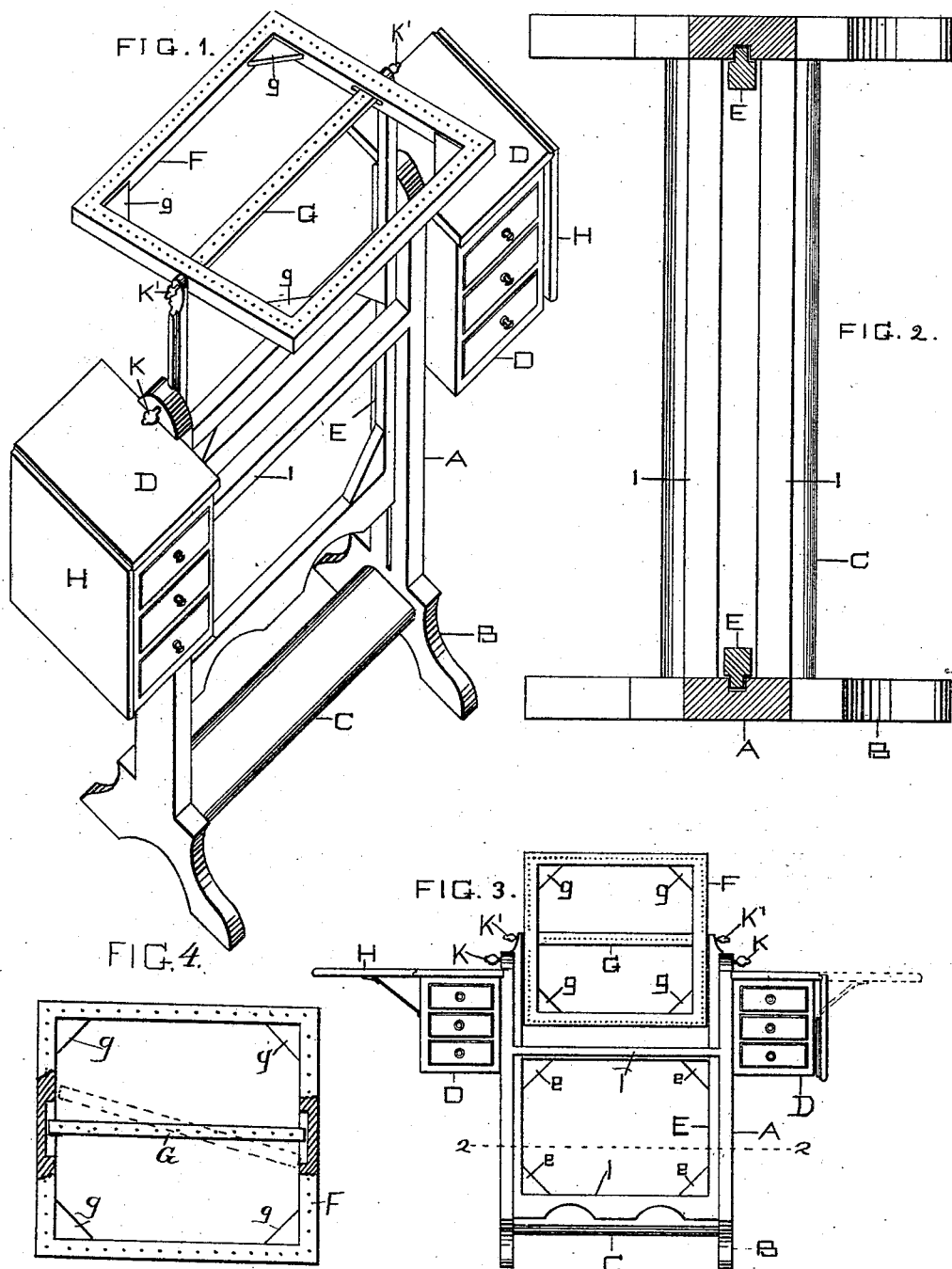
(No Model.)

L. HOPKINSON.

COMBINED EMBROIDERY FRAME, EASEL, WORK TABLE, AND DESK.

No. 345,509

Patented July 13, 1886.



WITNESSES

Chas. Leonard
Charles L. Thurber.

INVENTOR

Miss Lizzie Hopkinson
per L. Bradford,
her Attorney.

UNITED STATES PATENT OFFICE.

LIZZIE HOPKINSON, OF FRANKFORT, INDIANA.

COMBINED EMBROIDERY-FRAME, EASEL, WORK-TABLE, AND DESK.

SPECIFICATION forming part of Letters Patent No. 345,509, dated July 13, 1896.

Application filed February 23, 1886. Serial No. 192,863. (No model.)

To all whom it may concern:

Be it known that I, LIZZIE HOPKINSON, of the city of Frankfort, county of Clinton, and State of Indiana, have invented certain new and useful Improvements in Combined Embroidery-Frame, Easel, Work-Table, and Writing-Desk, of which the following is a specification.

This invention includes an adjustable frame suitable as the basis of an easel, work-table, or embroidery-frame, which is mounted upon a vertically-adjustable frame in the main frame-work; and it consists in the arrangement and combination of parts, which will be hereinafter more particularly described.

Referring to the accompanying drawings, which are made a part hereof, and on which similar letters of reference indicate similar parts, Figure 1 is a perspective view of my said invention; Fig. 2, a horizontal sectional view of the frame-work, looking downwardly from the dotted line 2 2 in Fig. 3; Fig. 3, a front elevation with the easel or embroidery-frame turned on edge; and Fig. 4, a top or plan view of the embroidery-frame separate, having a portion of its side pieces shown in horizontal section to more clearly illustrate the manner of adjusting the central bar.

In said drawings, the portions marked A represent the sides of the main frame; B, the feet thereto; C, a flat cross-bar, which serves to connect the sides, and also serves as a foot-rest; D, cases of drawers supported by the frame-sides A; E, a sliding frame supported by and resting in slides in the frame A; F, a rectangular or adjustable frame supported by said sliding frame E; G, a removable and adjustable cross-bar in said frame F; H, drop-leaves forming, with the top of the drawer-cases D, tables; I, cross-bars securing the upper portions of the frame-sides A together, and K K' set-screws for securing the frames E and F in adjusted position, respectively.

The frame consists of the uprights A, feet B, and cross-bars C and I, as before described. In its inner face, between the cross-bars I and above the cross-bar C, are formed grooves, in which the sides of the frame E rest and move. The cases of drawers D are secured to the outer sides of the side pieces, A, near their upper ends. The frame E is fitted between the sides A, and rests and moves in the grooves

therein. Its lower portion is adapted to receive a fabric carrying an ornamental design, and corner-pieces *e* are provided both for that purpose and for the purpose of strengthening the frame. This frame may be adjusted to any desired height, and there secured by the set-screws K, as will be readily understood.

The frame F is a rectangular frame centrally mounted on combined pivot and set-screws K'. It is provided with numerous small holes, as indicated, for securing embroidery-work thereon. It is also provided with corner-pieces *g*, which are sunk somewhat below its upper level, as shown most plainly in Fig. 1, and a board may be fitted inside the sides of the frame and rest on these corner-pieces, and thus form a work-table. It is also provided with a central cross-bar, G, which rests in slots therein, and is adjustable in said slots by simply sliding back and forth therein, it being held in the desired position in any convenient manner, and thus, when the device is used for an embroidery-frame, it can be varied as to size at pleasure. When the whole frame is to be used for the purposes of embroidering, this central cross-bar should be removed, which is accomplished by simply sliding one end forward and the other backward in the slots, as shown by dotted lines in Fig. 4. This frame F is adjustable on its pivot-screws K', and may thus be arranged at any angle desired. When used as an easel, it can be brought into the position most convenient for that purpose at a considerable angle, and when it is desired to use it as a work-table it can be brought into a horizontal plane; and it can be secured in any of these positions by the set-screws K'. The drop-leaves H are hinged to the cases D, and are supported in any convenient manner. When raised, they form considerable surfaces, which may be used for a writing-desk or work-table, as desired. When the use of this article of furniture is concluded, and it is desired to set it out of the way, this frame may be raised into a vertical position, as shown in Fig. 3, the leaves H folded down, and it can be set back into a comparatively small space.

Having thus fully described my said invention, what I claim as new, and desire to secure by Letters Patent, is—

1. The combination of the embroidery-frame

or easel F and an adjustable and removable cross-bar, G, arranged in and supported by slots in said frame F, substantially as shown and specified.

- 5 2. The combination of the frame consisting of the parts A, C, and I, the uprights A being provided with grooves in their inner faces, and the cross-bars I being arranged on each side of said grooves, the frame E, mounted in said grooves, the set-screws K, for securing the same in any desired position, the frame F, mounted between the upper ends of

the sides of the frame E by means of the combined pivots and set-screws K', and said combined pivots and set-screws, all substantially as set forth. 15

In witness whereof I have hereunto set my hand and seal, at Indianapolis, Indiana, this 19th day of February, A. D. 1886.

LIZZIE HOPKINSON. [L. S.]

In presence of—

C. BRADFORD,

CHARLES L. THURBER.