

(No Model.)

G. PETER.  
SCRAPER SHARPENER.

No. 347,506.

Patented Aug. 17, 1886.

FIG. I

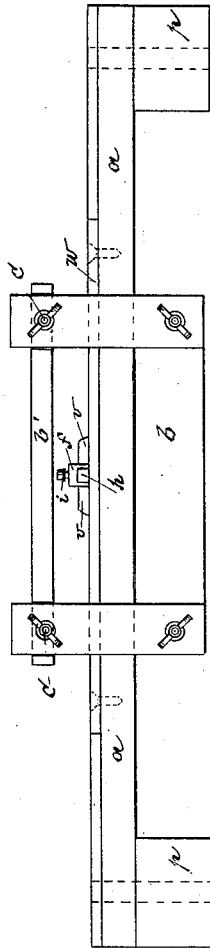


FIG. II

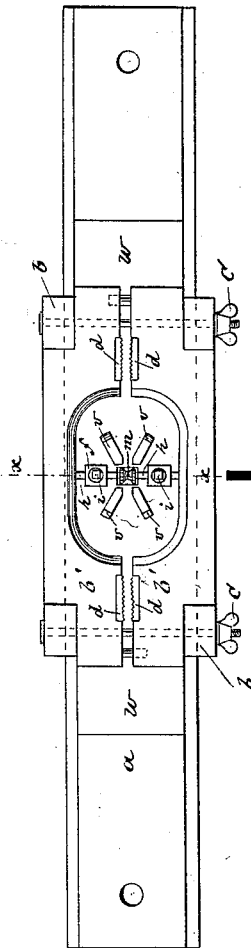
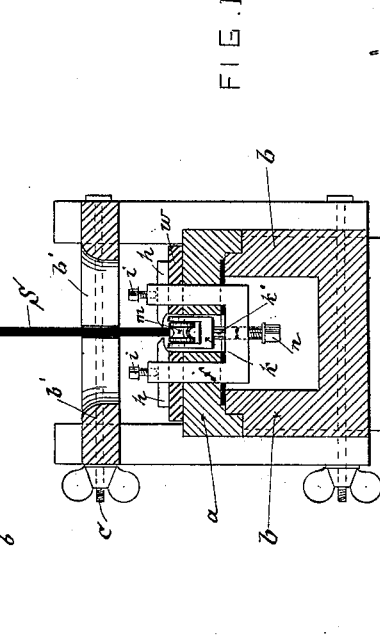


FIG. III



WITNESSES

*Wm A. Lowe*  
*J. P. S. S. S.*

INVENTOR

*George Peter*  
*per Roeder & Prieuss*  
*attorneys.*

# UNITED STATES PATENT OFFICE.

GEORGE PETER, OF NEW YORK, N. Y.

## SCRAPER-SHARPENER.

SPECIFICATION forming part of Letters Patent No. 347,506, dated August 17, 1886.

Application filed June 22, 1886. Serial No. 205,854. (No model.)

*To all whom it may concern:*

Be it known that I, GEORGE PETER, of the city of New York, county and State of New York, have invented a new and Improved Scraper-Sharpener, of which the following specification is a full, clear, and exact description.

This invention relates to a sharpener for scrapers; and it consists in the various features of improvements hereinafter more fully described.

In the accompanying drawings, Figure I represents a side view, and Fig. II a plan or top view, of my improved machine. Fig. III is a cross-section on line *x x*, Fig. II.

*a* is the bed-plate provided with feet *p* at the ends, through which the same is attached to the bench or table.

*b* is a support embracing the side edges of the bed-plate *a*, and capable of sliding freely back and forth on the same. The upper part of this support is made in two parts, *b' b'*, fastened together by bolts *c c*, and provided with steel plates *d d*, inserted on their inner edges and roughened at their inner sides to hold the scraper *S*, which is clamped between these two parts firmly in its place.

Upon the top of the bed-plate *a* a perfectly-straight metal plate, *w*, is fastened parallel with the edges of the bed-plate upon which the support slides.

In the middle of the bed-plate *a* a frame, *f*, is arranged, the two legs of which pass through the bed-plate *a* and plate *w*, and are provided with movable guiding-pieces *h*, resting upon the top of the plate *w*, and secured by means of set-screws *i*. These guiding-pieces *h* are regulated to correspond with the width of the scraper *S* to guide the same sidewise and act at the same time to keep the frame *f* in its place. The central part of this frame *f* sup-

ports a block, *k*, carrying on its upper end the cutter-wheel *m*. This block *k*, with its wheel, passes through the center of the bed-plate *a* and metal plate *w*, so as to bring the edge of the wheel *m* in line with the upper surface of the metal plate *w*.

Below the shank *k'* of the block *k* a set-screw, *n*, is placed, for raising or lowering the block, and consequently the wheel *m*, as may be desired. Near this wheel *m* guides *v v*, arranged diagonally, are attached to the metal plate *w*, to guide the scraper *S* in its proper direction.

The operation is as follows: The scraper *S*, the edge of which has been previously strengthened, is clamped, with its straight edge resting upon the metal plate *w*, between the two upper plates *b' b'* of the support *b*, and securely fastened by the bolts *c c*. The support, together with this scraper, is then passed several times backward and forward over the cutter-wheel *m*, where it receives the desired cutting-edge. The fixed guides *v v* bring the lower part of the scraper directly over the wheel *m*, while the guiding-pieces *h* hold the same steady sidewise.

What I claim is—

1. In combination with the bed-plate *a* and support *b*, the frame *f*, with guiding-pieces *h*, and cutting-wheel *m*, substantially as and for the purpose set forth.

2. In combination with the bed-plate *a*, provided with a metal plate, *w*, and frame *f*, the cutting-wheel *m*, supported in a block, *k*, and the set-screw *n*, acting against the shank *k'* of the block *k*, substantially as and for the purpose described.

GEORGE PETER.

Witnesses:

F. V. BRIESEN,  
HENRY E. ROEDER.