

(No Model.)

J. H. CUNNINGHAM.

HEEL MACHINE.

No. 381,493.

Patented Apr. 17, 1888.

Fig. 1.

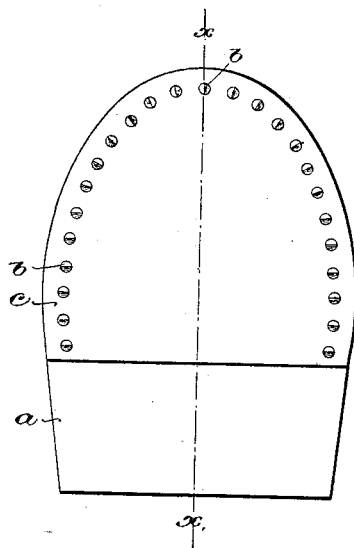


Fig. 2.

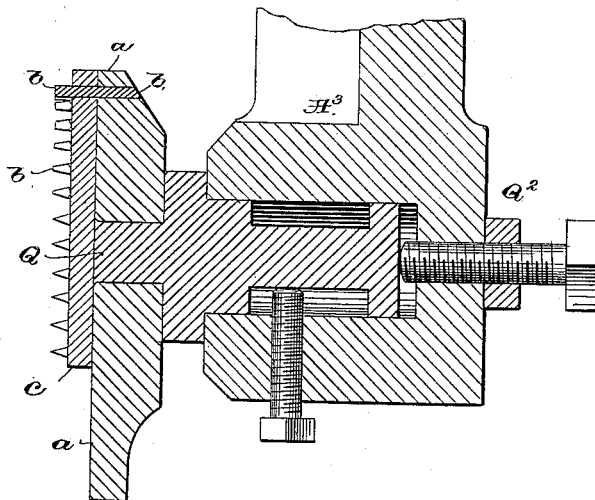
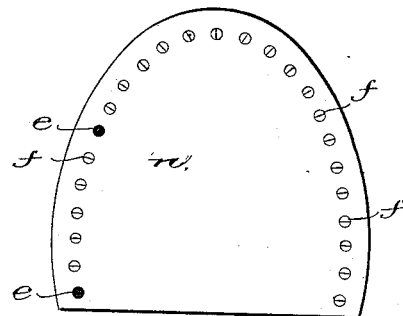


Fig. 3.



Witnesses

John F. C. Pringle,

And L. E. Emery.

Inventor

James H. Cunningham,

by Crosby & Gregory, attys.

UNITED STATES PATENT OFFICE.

JAMES H. CUNNINGHAM, OF BROCKTON, ASSIGNOR TO JAMES W. BROOKS,
TRUSTEE, OF CAMBRIDGE, MASSACHUSETTS.

HEEL-MACHINE.

SPECIFICATION forming part of Letters Patent No. 381,493, dated April 17, 1888.

Application filed June 24, 1886. Serial No. 206,057. (No model.)

To all whom it may concern:

Be it known that I, JAMES H. CUNNINGHAM, of Brockton, county of Plymouth, and State of Massachusetts, have invented an Improvement in Apparatus for Pricking or Indenting a Top Lift Attached to a Heel, of which the following description, in connection with the accompanying drawings, is a specification, like letters on the drawings representing like
10 parts.

In the manufacture of boots and shoes it is frequently desirable to provide the top lift of a heel with steel or other slugs after the top lift has been "blinded," as usual, on the large
15 ends of the nails employed to attach the heel to the sole, the slugs preventing unequal wearing of the tread end of the heel.

In accordance with my invention the pattern or top-lift plate employed in a heel-trimming machine, and against which the top lift is held pressed while the same is being applied or trimmed, is provided with a series of points to prick or indent the top lift for the reception of steel or other slugs without coming in
25 contact with the nails previously employed to attach the heel to the sole.

As herein illustrated, my invention is adapted to be employed in connection with a heel to be trimmed in a heel-trimming machine, such as represented in United States Patent
30 No. 267,544, to which reference may be had, the said patent describing a movable jack, in which is jacked or confined the shoe, the heel of which, previously applied, is to be trimmed.

Figure 1 in elevation represents the face of a pattern-plate embodying my invention; Fig. 2, a section of Fig. 1 in the dotted line *xx*, the said figure also showing in section a part of one of the arms for the shoe-holding jack; and
40 Fig. 3 represents the top-lift end of the heel, which has been pricked in accordance with my invention, some of the pricked holes being shown as filled in with slugs.

The pattern-plate *a* (shown in the drawings) is provided with a series of projecting pins or points, *b*, extended therethrough, as shown best at the top of Fig. 2. This pattern-plate has preferably an attached face, *c*, of leather, to prevent the edge of the heel-trimming knife
50 from coming in contact with the edge of the

metal plate *a*. The pattern-plate *a*, common to the machine described in the said patent, has at or near its center a hole to enable the pattern-plate to be placed over the center *Q*, common to said patent, and shown best in Fig. 7 thereof by the same letter, the said center forming part of a loose stud held in a socket at one end of the arm *A*³, also common to the said patent, the stud being adjustable longitudinally by a screw having a nut, *Q*², also
60 common to the said patent.

In practice, a shoe provided with an attached heel and with a blinded top lift will be placed in the jack of a trimming-machine, substantially as provided for in the said patent, and
65 by a suitable screw or other device acting at the interior of the shoe, the top lift covering the tread end of the heel to be trimmed will be pressed against the face *c*, the points *b* entering and passing more or less through the top lift, which I have represented by the letter *n* in Fig. 3, the said points *b* making holes
70 *e*, in which may be driven by hand suitable slugs, *f*, some of which are shown in Fig. 3 as driven into the said holes.

Pricking the top lift, as described, while jacking the same preparatory to trimming, enables the formation of a series of holes, which will be located at a uniform distance from the edge of the trimmed heel, and which will also
80 be so located in the top lift as to obviate the possibility of the slugs *f* striking the usual nails employed to attach the heel to the sole.

I do not desire to limit my invention in its application to the pattern-plate of a heel-trimming machine of only the kind represented in the said pattern, but desire to practice my invention and to embody the same in any usual heel-trimming machine having a plate against which the blinded top lift is pressed during
90 the operation of trimming the heel.

I am aware that Patent No. 208,653 shows a plate having two registering projections to enter the top lift near the breast end thereof, to thus prevent the twisting of the top lift with
95 relation to the plate; but in such patent the portion of the top lift so pricked by the projection referred to is removed when breasting the heel.

I am also aware that awls have been used to
100

prick through a pile of lifts in the manufacture
of heels; but prior to my invention I am not
aware that a heel having a top lift blinded
upon it has ever been indented entirely about
5 its edge at a short distance therefrom, so as to
leave a series of holes uniformly distant from
the edge, to thereby indicate to the operator
exactly the points where slug-nails can be
driven into the top lift to make a symmetrical
10 and well-appearing heel.

I claim—

In a heel-trimming machine, the pattern-
plate, as *a*, provided with a series of short fixed
points arranged about the said plate to indent

the top lift of the heel being trimmed, the said 15
points being arranged with relation to the edge
of the plate to insure the pricking of holes in
the top lift at the desired distance from the
edge of the top lift for the reception of slug-
nails, substantially as described. 20

In testimony whereof I have signed my name
to this specification in the presence of two sub-
scribing witnesses.

JAMES H. CUNNINGHAM.

Witnesses:

BERNICE J. NOYES,
C. M. CONE.