

(No Model.)

R. H. LEE.

DESIGNATION BADGE.

No. 382,367.

Patented May 8, 1888.

Fig. 1

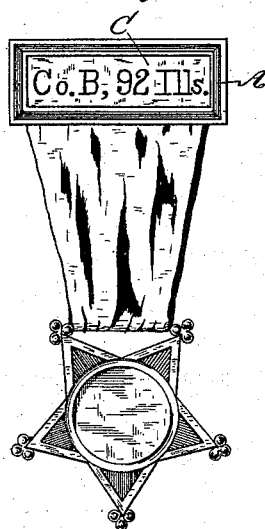


Fig. 2.

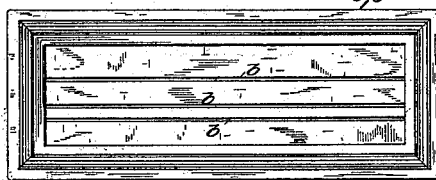


Fig. 3.

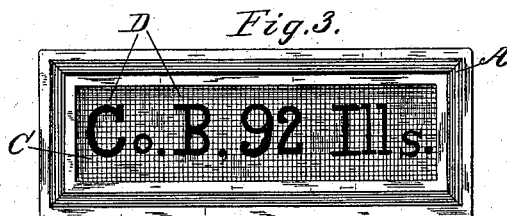


Fig. 4.

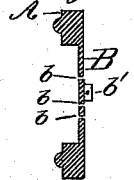


Fig. 6.

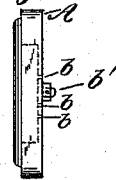


Fig. 5.

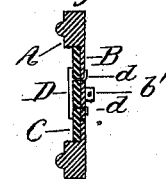
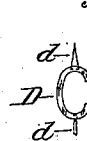


Fig. 7.



Witnesses.

Robert H. Wiles,
H. J. Rohrer.

Inventor.

Richard H. Lee.

By his Attorneys

Whittemore & Wright.

UNITED STATES PATENT OFFICE.

RICHARD HENRY LEE, OF ALTOONA, DAKOTA TERRITORY.

DESIGNATION-BADGE.

SPECIFICATION forming part of Letters Patent No. 382,367, dated May 8, 1883.

Application filed June 1, 1887. Serial No. 239,957. (No model.)

To all whom it may concern:

Be it known that I, RICHARD HENRY LEE, a citizen of the United States, residing at Altoona, in the county of Beadle and Territory of Dakota, have invented certain new and useful Improvements in Badges; and I do declare the following to be a full, clear, and exact description of the invention, such as will enable others skilled in the art to which it appertains to make and use the same, reference being had to the accompanying drawings, and to the letters and figures of reference marked thereon, which form a part of this specification.

My invention relates to improvements in badges adapted for the use of members of military or other organizations, and which are provided with means for indicating the special organization to which the wearer belongs.

The invention is fully described and explained in this specification, and shown in the accompanying drawings, in which—

Figure 1 is an elevation of a completed badge provided with the facing and lettering herein-after described. Fig. 2 is an elevation of the frame and back plate of the badge. Fig. 3 is an enlarged view similar to Fig. 1. Fig. 4 is a transverse section of Fig. 2. Fig. 5 is a transverse section of Fig. 4. Fig. 6 is an enlarged view of the badge frame. Fig. 7 is an elevation of one of the detachable characters used in lettering the badge.

In the drawings, A is a preferably rectangular frame; and B is a plate formed integrally with the frame or attached to it either permanently or detachably and provided with any desired number of longitudinal slots *b*, and also with a suitable pin, *b'*, for attaching the badge to the dress of the wearer.

C is a layer of cloth or other fabric of any desired material and color lying in front of and covering the slotted plate B and glued or otherwise fastened thereto. When the badge is to be used by a military organization, the color of the fabric may be made to designate the arm of the service to which the organization belongs; and it is evident that the pattern or figure of the fabric may also be made distinctive, if desired.

In order to further designate the organization, I apply to the badge any suitable detachable characters, D, each of which is furnished with tangs *d*, preferably pointed and adapted

to pass through the fabric C and the slots *b* and to be bent into a plane parallel with and against the rear face of the plate B, as shown in Fig. 5. When the characters are thus attached to the badge, they are held securely against accidental displacement, their longitudinal movement with reference to the slots of the plate being prevented by the fabric through which the tangs pass, and their transverse movement with reference to said slots being prevented by the walls of the slots themselves. As shown in the drawings, the slots are so spaced as to accommodate both large and small characters, and for all ordinary purposes the three slots shown are sufficient. It is evident, however, that the number of slots may be increased at pleasure, and I do not therefore limit the invention in this regard to the exact form shown. The badge being constructed and the parts connected as described, it is evident that the characters may be detached and replaced by others, or the fabric lying between the characters and the plate B may be renewed or varied at pleasure, and that the same badge may thus be altered with but little trouble and slight expense to suit any organization.

The frame A or plate B may be provided with any suitable pin or bar for the attachment of a suspending ribbon and emblem, such as are shown in Fig. 1; but as this feature constitutes no part of my invention and is a well-known element in badges of this class, no illustration of it is thought to be necessary.

I am aware that signs have been constructed by sticking barbed letters into a backing of cloth or cork; but my device differs essentially from both of these, and is a decided improvement upon them.

In the patented badges a great deal of time must be consumed in arranging the letters, and it is extremely difficult, if not impossible, to secure them in proper alignment. Furthermore, the cork or cloth backing is yielding, and as the barbs are simply thrust into the backing the letters are very liable to be accidentally displaced or removed. In my device the letters can be applied very rapidly, the slots in the metal plate bringing them into accurate alignment as fast as they are applied and without any especial care on the part of the workman. This is an important point in an invention of this kind, where large quanti-

ties must be made, and frequently in great haste to fill orders for conventions and the like. Furthermore, the letters are firmly secured, by reason of the barbs being clinched upon the metal backing, so that they are entirely safe from accidental displacement.

Having now described and explained my invention, what I claim as new, and desire to secure by Letters Patent, is—

1. In a badge, the combination, with the plate formed with suitable openings, of a layer of fabric covering the face of said plate, and characters provided with tangs adapted to pass through said fabric and the openings in said plate and to be clinched upon the rear face of the plate, substantially as and for the purpose set forth.

2. The combination, with the plate B, having a frame, A, and formed with slots *b*, of the detachable fabric C, covering the face of said plate, and the characters D, provided with tangs *d*, adapted to pass through the fabric and the slots *b* and to be clinched upon the back of the plate, substantially as and for the purpose set forth.

In testimony whereof I affix my signature in presence of two witnesses.

RICHARD HENRY LEE.

Witnesses:

CHAS. H. NEWELL,

BENJ. W. GARDNER.