

(No Model.)

W. W. WILCOX.

SAIL GROMMET.

No. 382,921.

Patented May 15, 1888.

Fig. 1.



Fig. 2.

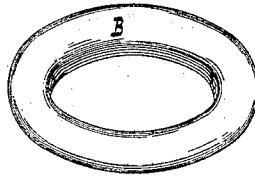


Fig. 3.

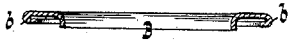


Fig. 4.

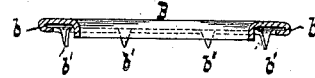


Fig. 7.

Fig. 5.



Fig. 8.

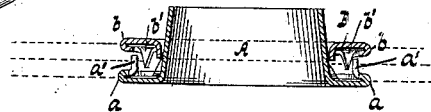
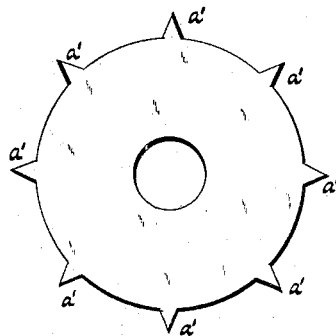


Fig. 6.



WITNESSES:

Attest du Juge
William Miller

INVENTOR.

William W. Wilcox.

BY

Van Santvoord & Hauff

his ATTORNEYS

UNITED STATES PATENT OFFICE.

WILLIAM W. WILCOX, OF MIDDLETOWN, CONNECTICUT.

SAIL-GROMMET.

SPECIFICATION forming part of Letters Patent No. 382,921, dated May 15, 1888.

Application filed March 8, 1888. Serial No. 266,515. (No model.) Patented in France November 9, 1885, No. 172,150; in England March 29, 1886, No. 4,383, and in Italy March 31, 1887, No. 21,268.

To all whom it may concern:

Be it known that I, WILLIAM W. WILCOX, a citizen of the United States, residing at Middletown, in the county of Middlesex and State of Connecticut, have invented new and useful Improvements in Sail-Grommets, (for which I have obtained a patent in Great Britain, No. 4,383, bearing date March 29, 1886; a patent in Italy, No. 21,268, dated March 31, 1887; a patent in France, No. 172,150, dated November 9, 1885, and additional patent dated January 29, 1887,) of which the following is a specification.

This invention relates to an eyelet with a rolled rim which is provided at its inner edge with upwardly-projecting barbs. With this eyelet is combined an eyelet-washer provided with a rolled rim. The inner edge of this rim may be provided with barbs, all as hereinafter more fully described, and illustrated in the accompanying drawings, in which—

Figure 1 represents a central section of my grommet as attached to a fabric, the rim of the eyelet-washer being made without barbs. Fig. 2 is a perspective view of the eyelet-washer detached. Fig. 3 is a central section of the same. Fig. 4 is a perspective view of the eyelet detached. Fig. 5 is a central section of the same. Fig. 6 is a plan view of the blank from which the eyelet is formed. Fig. 7 is a central section of an eyelet-washer provided with barbs. Fig. 8 is a central section of my grommet as attached to a sail, both the eyelet and eyelet-washer being provided with barbs.

Similar letters indicate corresponding parts. In the drawings, the letter A designates an eyelet, which is made of sheet metal—such as sheet-brass or sheet-steel—and which is provided with a rolled rim, *a*. From the inner edge of this rim extend barbs *a'*. This eyelet is produced from a blank, as shown in Fig. 6, in the circumference of which are formed the

barbs *a'*. This eyelet may be used with or without the eyelet-washer B, which eyelet-washer is also made of sheet metal and provided with a rolled rim, *b*. When the eyelet A is to be used, I pass the barrel of the same through a hole cut in the fabric or material on which the eyelet is to be secured, and as the eyelet is pushed up in this hole the barbs *a'* penetrate the fabric and assist in retaining the eyelet in position. After the eyelet A has been properly adjusted the eyelet-washer B is put on, as shown in Figs. 1 and 8, and then the eyelet is clinched in the usual manner.

In Figs. 7 and 8 I have represented an eyelet-washer, B, which is provided with a rolled rim, *b*, and with barbs *b'*, and if this eyelet-washer is used in connection with my barbed eyelet A it must be so adjusted that the barbs *b'* of the eyelet-washer will be opposite the spaces between the barbs *a'* of the eyelet.

What I claim as new, and desire to secure by Letters Patent, is—

1. The combination, with a washer, B, of an eyelet to form a sail-grommet provided with a rolled rim, the edge of which is provided with a series of upwardly-projecting barbs, *a'*, to engage the sail when the eyelet is clinched in position on the washer, substantially as described.

2. The combination, with an eyelet provided with a rim, *a*, the edge of which is formed with a series of upwardly-projecting barbs, *a'*, of a washer, B, adapted to the eyelet and having barbs *b'* around its central opening, substantially as described.

In testimony whereof I have hereunto set my hand and seal in the presence of two subscribing witnesses.

WILLIAM W. WILCOX. [L. S.]

Witnesses:

W. C. HAUFF,
E. F. KASTENHUBER.