

(No Model.)

2 Sheets—Sheet 1.

P. J. GRINBERG.

OIL STOVE.

No. 384,618.

Patented June 19, 1888.

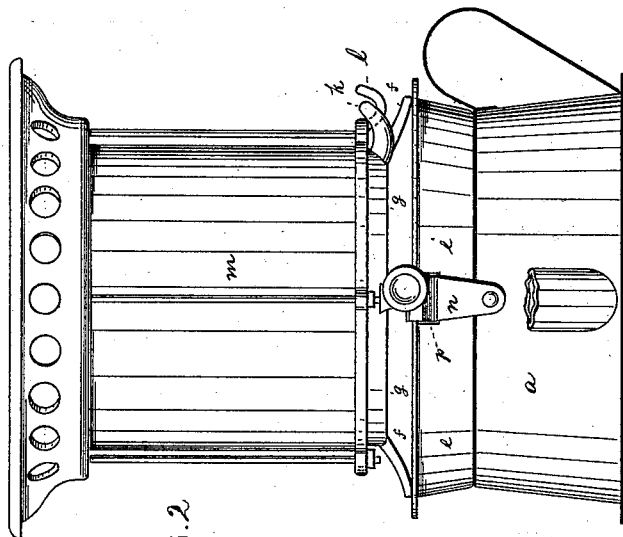


FIG. 2

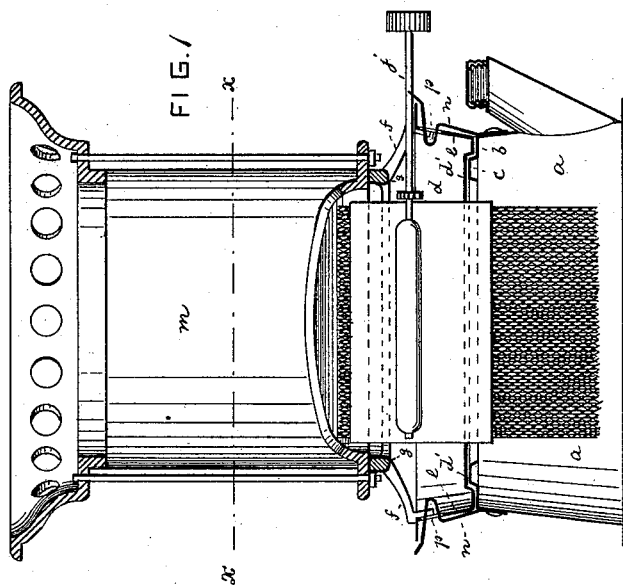


FIG. 1

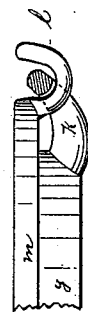


FIG. 5

FIG. 4

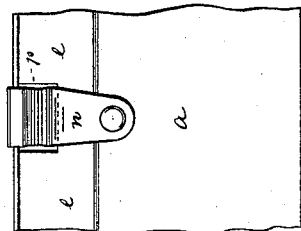


FIG. 3

WITNESSES.

Wm. A. Lowe.
Alfred Joughmans.

INVENTOR.

P. J. Grinberg.
by his attorneys.
Roeder & Brien.

(No Model.)

2 Sheets—Sheet 2.

P. J. GRINBERG.

OIL STOVE.

No. 384,618.

Patented June 19, 1888.

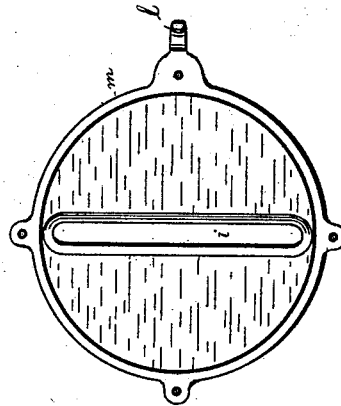


FIG. 6

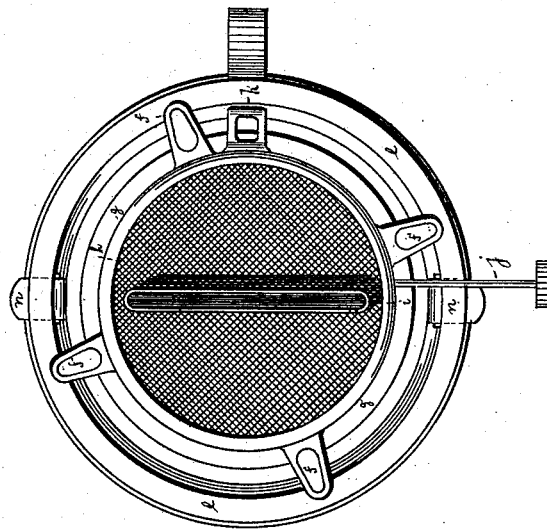


FIG. 7

WITNESSES.

Wm. A. Lowe.
Alfred Jonghmann.

INVENTOR.

P. J. Grinberg.
by his attorneys.
Roderat & Nielsen.

UNITED STATES PATENT OFFICE.

PAUL J. GRINBERG, OF NEW YORK, N. Y.

OIL-STOVE.

SPECIFICATION forming part of Letters Patent No. 384,618, dated June 19, 1888.

Application filed February 24, 1888. Serial No. 265,144. (No model.)

To all whom it may concern:

Be it known that I, PAUL J. GRINBERG, of New York city, New York, have invented a new and Improved Oil-Stove, of which the following is a specification.

This invention relates to an improvement in oil-stoves, and more particularly to the mode of securing the oil-reservoir to the water-pan or superstructure.

The invention consists in the various features of improvement, more fully pointed out in the claims.

In the accompanying drawings, Figure 1 is a side view, partly in section, of my improved oil-stove. Fig. 2 is a side view at right angle to Fig. 1. Fig. 3 is a detail section through the flange of the water-pan. Fig. 4 is a front view of Fig. 3. Fig. 5 is a detailed sectional side view of the hinge. Fig. 6 is a horizontal section on line *x x*, Fig. 1; and Fig. 7 is a top view of the stove with the dome removed.

The letter *a* represents the oil-chamber of the stove, the upper flanged edge, *b*, of which is provided with a bead, *c*, that forms a seat for the flanged bottom *d'* of the water-pan *d*. This water-pan has a surrounding flange, *e*, upon which are supported the ends of arms *f*, converging toward the center, and there sustaining a frame, *g*, that contains the gauze plate *h*, through which the wick-tube *i* extends, as usual.

j is the wick-raiser, of suitable construction.

The frame *g* is provided with an eye, *k*, that

receives the hook *l* of the dome *m*. When such dome is folded back, it will rest upon and be sustained by one of the arms *f*.

The oil-reservoir *a* is provided with two spring-hooks, *n*, the shanks of which are riveted to the oil-chamber, as shown. These hooks engage a pair of slots or eyes, *p*, in the flange *e* of the water-pan *d*. It will be observed that as the hooks engage slots of the flange *e*, and not merely embrace or overlap the flange, the water-pan is positively secured to the oil-chamber and cannot move or slip in any direction. The slots *p* should be of such size only as to accommodate the hooks *n*.

What I claim is—

1. The combination of oil-chamber *a*, having beaded flange *b*, with the water-pan *d*, having flanged bottom *d'*, substantially as specified.

2. The combination of oil-chamber *a* and water-pan *d*, having flange *e*, with the arms *f*, secured to such flange and supporting frame *g*, and with the gauze *h*, wick-tube *i*, and dome *m*, that is hinged to frame *g*, substantially as specified.

3. The combination of oil-chamber *a* with the water-pan *d*, having flange *e*, such flange being provided with the eyes *p*, and with the spring-hooks *n*, secured to oil-chamber *a* and engaging said eyes, substantially as specified.

PAUL J. GRINBERG.

Witnesses:

F. V. BRIESEN,
ALFRED JONGHMANS.