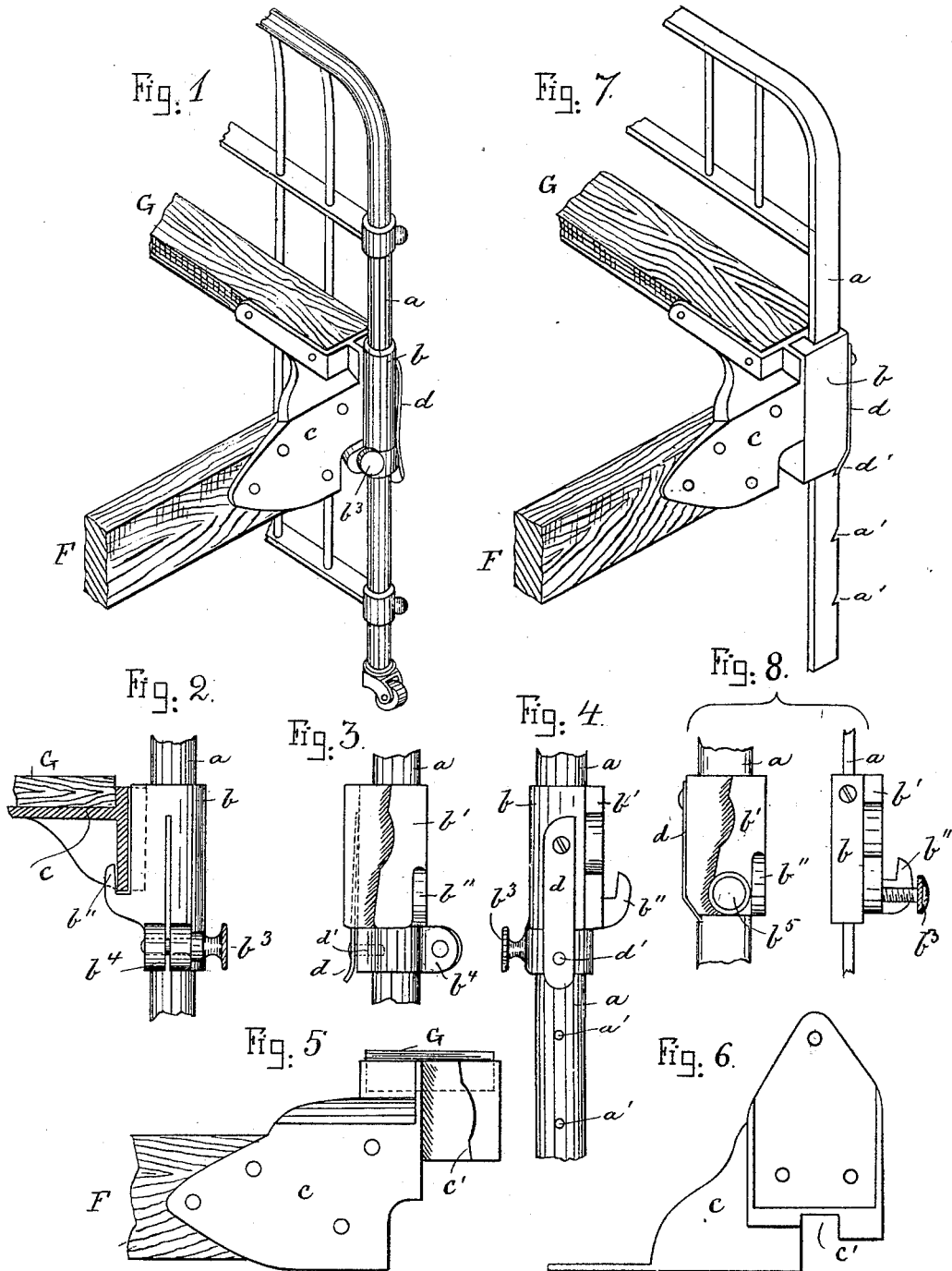


(No Model.)

A. J. GOODWIN.
BEDSTEAD.

No. 419,118.

Patented Jan. 7, 1890.



Witnesses.

Selma R. Schelin.
Charles W. Goodrich

Inventor

Asahel J. Goodwin
by *Wm. Warren*
his atty

UNITED STATES PATENT OFFICE.

ASAHEL J. GOODWIN, OF BROOKLINE, MASSACHUSETTS.

BEDSTEAD.

SPECIFICATION forming part of Letters Patent No. 419,118, dated January 7, 1890.

Application filed April 1, 1889. Serial No. 305,539. (No model.)

To all whom it may concern:

Be it known that I, ASAHEL J. GOODWIN, a citizen of the United States, and a resident of Brookline, in the county of Norfolk and State of Massachusetts, have invented new and useful Improvements in Bedsteads, of which the following, taken in connection with the accompanying drawings, is a specification.

This invention relates to improvements in that class of bedsteads in which the side and end rails are vertically adjustable on the legs or bed-posts; and it is carried out as follows, reference being had to the accompanying drawings, wherein—

Figure 1 represents a perspective view of one of the bed-posts and the improved device for vertically adjusting the side and end rails. Fig. 2 represents an end view of the vertically-adjustable end and side rail supporting sleeve. Fig. 3 represents a side view of said sleeve; and Fig. 4 represents an end view of the same, showing the opposite side of Fig. 2. Fig. 5 represents a side elevation of one of the corner-brackets by which the side and end rails are united, and Fig. 6 represents a top view of the same. Fig. 7 represents a modification of the invention as applied to a four-sided bed-post, and Fig. 8 represents in side and end views the vertically-adjustable sleeve for the bed-post shown in Fig. 7.

Similar letters refer to similar parts wherever they occur on the different parts of the drawings.

The object of my invention is to provide the legs or bed-posts of a bedstead with vertically-adjustable sleeves and fastening devices for securing said sleeves to the posts after being adjusted thereon, combined with rail-supporting brackets adapted to rest in a detachable manner and to be supported on said sleeves for the purpose of enabling the bed-supporting rails to be vertically adjusted in a quick and easy manner, as will hereinafter be more fully shown and described.

In the drawings, *a* represents one of the corner bed-posts, which in Figs. 1, 2, 3, and 4 is shown as a cylindrical rod and in Figs. 7 and 8 as a four-sided flattened bar. On each of said posts is vertically adjustable the sleeve *b*, having on its inside a tapering pro-

jection *b'*, on which the corner-rail bracket *c* is supported, as shown in Figs. 1 and 8. Each sleeve *b* has at or near its lower portion an upwardly-projecting hook *b''*, adapted to receive the lower edge of the said bracket *c*, so as to prevent the bed-post legs from expanding in a lateral direction when the bracket is put in place on said sleeve *b*. To the sleeve *b* is secured a spring *d*, having its free end provided with a lip or projection *d'*, adapted to be locked into one of a series of notches or recesses *a'* *a'* on the post *a*, as shown.

The sleeve *b*, after being adjusted on the post *a*, is additionally secured to it, preferably, by means of a clamping-screw *b³*, going through slitted ears *b⁴*, as shown in Figs. 1, 2, 3, and 4, or by means of a set-screw *b⁵*, (shown in Fig. 8,) or by means of other suitable or equivalent devices without departing from the essence of my invention.

c represents one of the corner-brackets, to which the ends of the side rail *F* and end rail *G* are secured in a suitable manner. The said bracket *c* is provided with a tapering recess *c'*, adapted to receive the tapering projection or lug *b'* on the sleeve *b*, as shown in Figs. 5 and 6, by which a firm connection is established between the said sleeve and bracket in a direction lengthwise of the bed. When the bracket *c* is thus connected to the sleeve *b*, the lip *b''* thereon receives the lower edge of the bracket *c*, as shown in Fig. 2, by which the said bracket is prevented from moving laterally relative to the post *a* and its sleeve *b*. It will thus be seen that the brackets *c* and the side and end rails secured thereto can be easily detached from the vertically-adjustable sleeves for the purpose of packing, storing, or transportation, as well as when the sleeves are to be adjusted on the posts *a*.

When it is desired to adjust the height of the bed, the brackets *c*, and the side and end rails secured to them, the said brackets are first raised and disconnected from the wedge-shaped projections on the sleeves *b*, and, if so desired, the said brackets and their side and end rails entirely detached from the bed, after which the sleeves *b* are raised or lowered the desired distance and locked in position by the spring-catches *d d'* and secured by the

clamp or set-screws. After the said sleeves have been thus adjusted and secured to the posts *a* the rail-carrying brackets *c* are placed in position on the said sleeves, as herein-
5 above described.

Having thus fully described the nature, construction, and operation of my invention, I wish to secure by Letters Patent, and claim—

10 1. In a bedstead, the posts *a*, the sleeves *b*, adjustable on said posts, and the tapering sleeve projections *b'*, in combination with the detachable brackets *c* and recesses *c'* thereon, adapted to receive the tapering sleeve pro-
15 jections *b'*, substantially as and for the purpose set forth.

2. In a bedstead, the posts *a*, having notches or recesses *a'*, and the adjustable sleeves *b*, having locking-springs *d* and tapering projection *b'* and lips *b''*, combined with the rail-carrying brackets *c*, having recesses *c'*,
20 adapted to receive the said projections *b'*, substantially as and for the purpose set forth.

In testimony whereof I have signed my name to this specification, in the presence of two subscribing witnesses, on this 27th day
25 of March, A. D. 1889.

ASAHEL J. GOODWIN.

Witnesses:

ALBAN ANDRÉN,

SELMA R. SCHELIN.