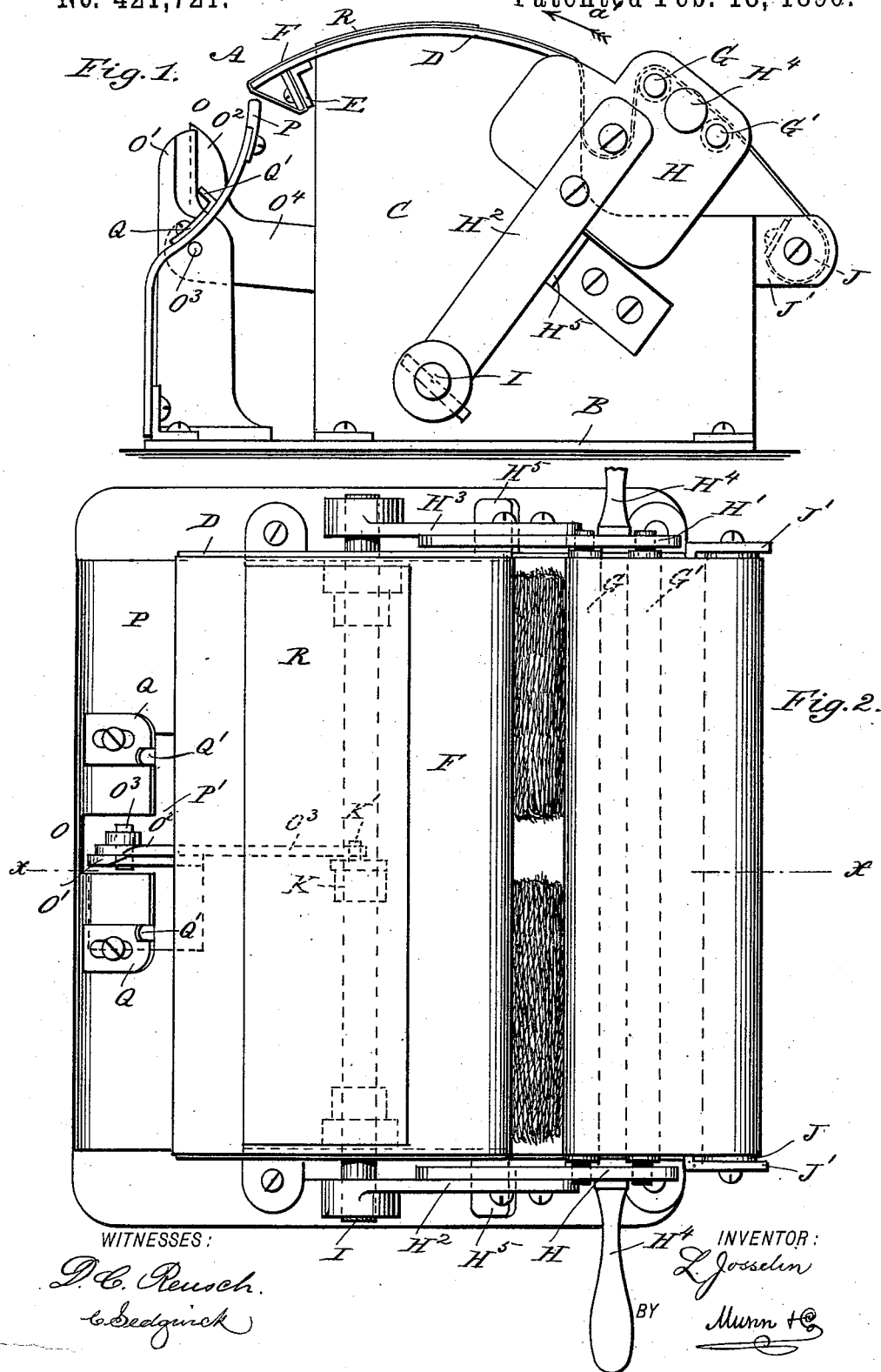


2 Sheets—Sheet 1.

No. 421,721.

Patented Feb. 18, 1890.



(No Model.)

2 Sheets—Sheet 2.

L. JOSSELIN.
CIGARETTE MACHINE.

No. 421,721.

Patented Feb. 18, 1890.

Fig. 3.

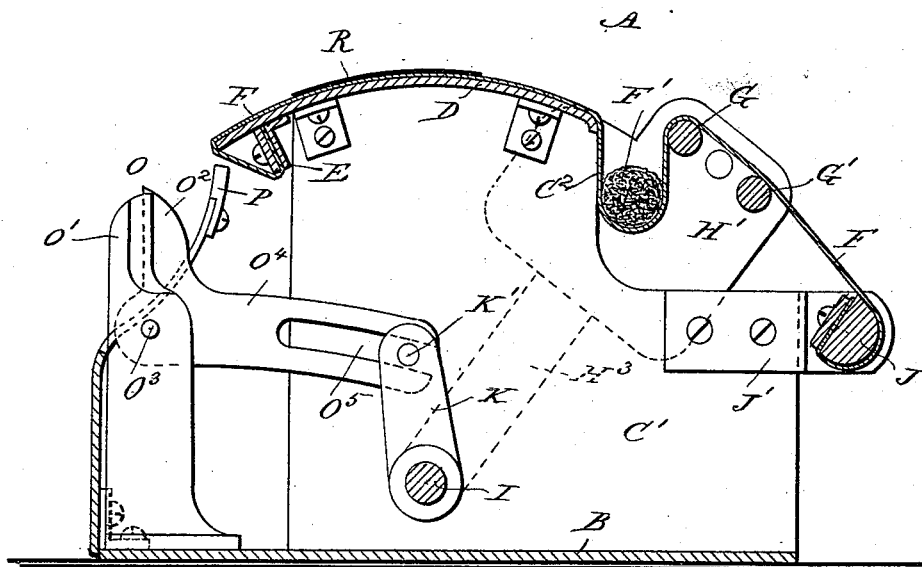
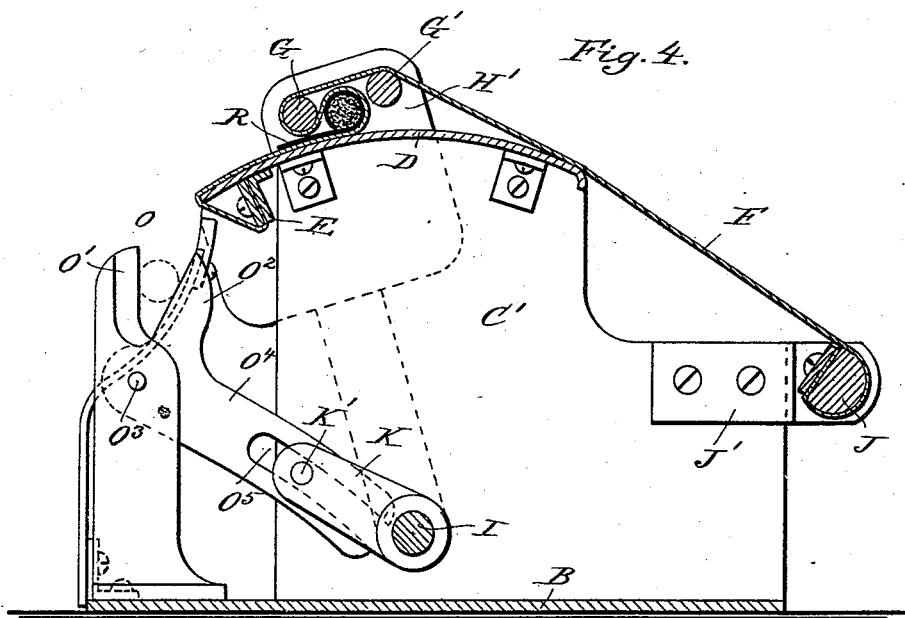


Fig. 4.



WITNESSES:

D. C. Reusch
C. Sedgwick

INVENTOR:

BY *L. Josselin*

BY Munn & Co
ATTORNEYS.

UNITED STATES PATENT OFFICE.

LOUIS JOSSELIN, OF NEW ORLEANS, LOUISIANA, ASSIGNOR TO WILLIAM R. IRBY, OF SAME PLACE.

CIGARETTE-MACHINE.

SPECIFICATION forming part of Letters Patent No. 421,721, dated February 18, 1890.

Application filed October 10, 1889. Serial No. 326,556. (No model.)

To all whom it may concern:

Be it known that I, LOUIS JOSSELIN, of New Orleans, in the parish of Orleans and State of Louisiana, have invented a new and Improved Cigarette-Machine, of which the following is a full, clear, and exact description.

The object of the invention is to provide a new and improved cigarette-machine which is simple and durable in construction and very effective in operation, quickly rolling and sealing the tobacco in the wrapper.

The invention consists of certain parts and details and combinations of the same, as will be fully described hereinafter, and then pointed out in the claims.

Reference is to be had to the accompanying drawings, forming a part of this specification, in which similar letters of reference indicate corresponding parts in all the figures.

Figure 1 is a side elevation of the improvement. Fig. 2 is a plan view of the same. Fig. 3 is a sectional side elevation of the same on the line $x x$ of Fig. 2, and Fig. 4 is a like view of the same in a different position.

The improved cigarette-machine A is provided with a suitable base B, on which are secured the parallel sides C and C', connected with each other on top by a segmental plate D, provided on one end on the under side with a clamp E, in which is secured one end of a band F, passing over the top of a segmental plate D, and then hanging downward on the other end of the said plate to form a pocket F', in which the tobacco is placed. (See Fig. 3.) The band F then passes over the rollers G and G', mounted to turn in plates H and H', held on the outside of the sides C and C', respectively, and secured on arms H² and H³, respectively, fastened on a rock-shaft I, mounted to turn in suitable bearings in the sides C and C'. On each of the plates H and H' is secured an outwardly-extending handle H⁴, which is taken hold of by the operator to swing said plates, with the rollers G and G', forward and backward over the segmental plate D, which latter has its center in the axis of the shaft I. The other end of the band F is secured in a suitable clamp J, extending transversely and held in suitable brackets J', secured to the ends of the sides

C and C'. The rearward movement of the rocking arms H² and H³ is limited by a stop H⁵, secured to one of the sides C or C'.

On the rock-shaft I between the sides C and C' is secured an arm K, adapted to operate a pair of shears O, located in front of and below the segmental plate. The pair of shears O comprises a fixed shear-blade O', secured on the base B, and a movable shear-blade O², pivoted at O³ to the said fixed shear-blade O', and provided with a rearwardly-extending arm O⁴, having a slot O⁵, engaged by a pin K' on the arm K, secured on the rock-shaft I. When the latter rocks forward and backward, the pin K', operating on the arm O⁴, opens and closes the movable shear-blade O².

The pair of shears O serves to cut the rolled cigarette in two parts, and in order to guide the rolled cigarette to the said shears a guide-plate P is provided, which extends from the front end of the segmental plate D downward, and is curved in such a manner that when the shear-blade O² is opened the cigarette rolls directly against the cutting-edge of the fixed shear-blade O', and is held in place by adjustable stop-plates Q, held on the guide-plate P, and each provided with an upwardly-turned lug Q', against which the cigarette rests. It is understood that the guide-plate P is provided with a suitable opening P', through which the pair of shears projects, as is plainly shown in the drawings.

The operation is as follows: When the machine is in the position shown in Figs. 1, 2, and 3, the operator places the wrapper R on the top of the band F over the segmental plate D, as is plainly shown in the said figures. The tobacco to be rolled in the said wrapper R is placed in the pocket F', extending between the plates H and H', as shown. The operator now takes hold of the handles H⁴ and swings the plates H in the direction of the arrow a' , so that the roller G moves forward under the band F, whereby the pocket F' is rolled forward, thereby rolling the tobacco until the said pocket finally travels on top of the segmental plate D, and the tobacco, now equally distributed and rolled, rolls on the wrapper R, which is rolled up with the pocket and encircles the tobacco

in the pocket. As the outer end of the wrapper R is gummed, the gummed end will seal on the formed cigarette, and the sealed cigarette will finally roll over the front end of the band F and the plate D onto the guide P and down the same onto the lugs Q' of the adjustable stops Q. The movable shear-blade O² during this time is opened rearward, so as to be out of the way when the cigarette passes down the guide-plate P. When the operator now moves the handles H¹ in the inverse direction of the arrow a', the arm K swings the arm O¹ upward, so that the movable shear-blade O² moves outward toward the fixed shear-blade O', whereby the cigarette is cut in two parts of equal length.

The machine is of a width equal to the length of two cigarettes, so that at each operation two cigarettes of ordinary length are formed. The machine may be made of a still greater breadth, so that three, four, or more cigarettes may be formed at one time, a corresponding number of shears then being used and placed equal distances apart. Thus it will be seen that cigarettes can be very quickly rolled and cut to the proper size.

Having thus fully described my invention, I claim as new and desire to secure by Letters Patent—

30 1. The combination, with the segmental plate, the band, the rock-frame, and a roller mounted on said frame and over which said band passes, of a slotted guide-plate in front of the segmental plate, stops at opposite sides of the slot, and shears projecting through the slot between the stops, the movable member of the shears having an arm projecting under the segmental plate and operated from

the shaft of the rocking frame, substantially as set forth.

2. In a cigarette-machine, the combination, with a segmental plate, of a band secured at its ends and passing over the said plate to form a pocket at one end of the same, a roller over which passes the said band, a rock-frame carrying said roller and having its axis coinciding with the center of the said segmental plate, a guide-plate held at the front end of the said segmental plate, a pair of shears projecting through the said guide-plate and having a fixed and a movable member, the latter having an arm projecting rearwardly below the segmental plate, and a crank-arm on the axis of the rock-frame engaging the slotted end of said knife-arm, substantially as shown and described.

3. In a cigarette-machine, the combination, with a segmental plate, of a band secured at its ends and passing over the said plate to form a pocket at one end of the same, a roller over which passes the said band, a rock-frame carrying said roller and having its axis coinciding with the center of the said segmental plate, a guide-plate held at the front end of the said segmental plate, a pair of shears projecting through the said guide-plate and having a fixed and a movable member, means, substantially as described, for operating the said movable member from the shaft of the said rock-frame, and adjustable stops held on the said guide-plate, as set forth.

LOUIS JOSSELIN.

Witnesses:

MAURICE P. WOULFE,
D. C. BURCHFIELD.