

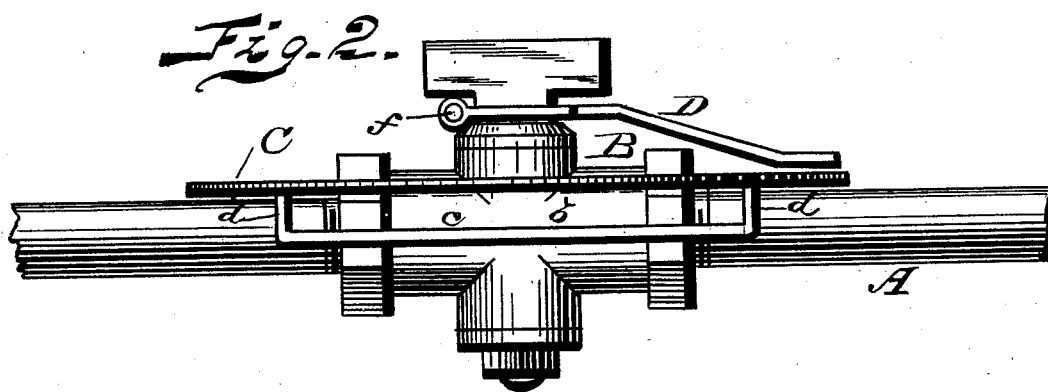
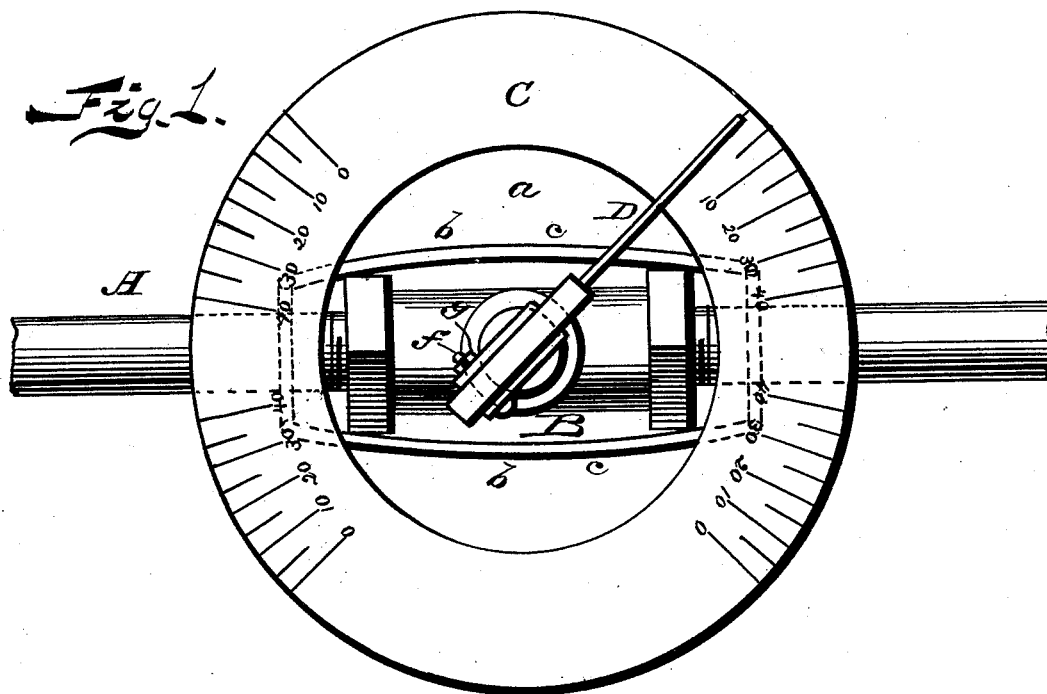
(No Model.)

2 Sheets—Sheet 1.

W. W. ROBINSON & W. S. BROCKWAY.
GAGE FOR GAS COCKS.

No. 422,449.

Patented Mar. 4, 1890.



WITNESSES
Jas. B. Clark
John Curran

INVENTORS.
W. W. Robinson
W. S. Brockway
By C. H. Bates
Attorney.

(No Model.)

2 Sheets—Sheet 2.

W. W. ROBINSON & W. S. BROCKWAY.

GAGE FOR GAS COCKS.

No. 422,449.

Patented Mar. 4, 1890.

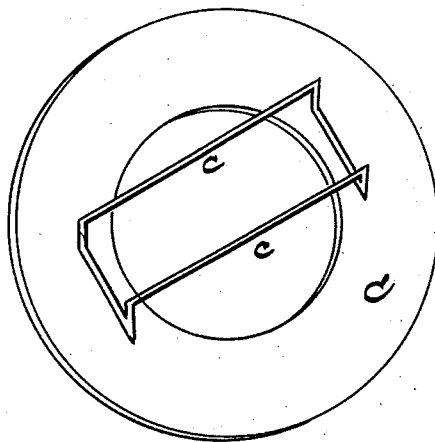


Fig. 3.

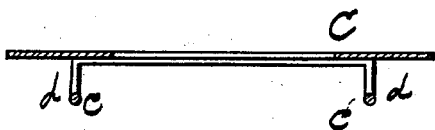


Fig. 4.

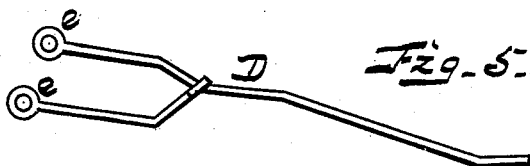


Fig. 5.

WITNESSES

Jas B Clarke
Morris Goodwin

INVENTORS.

W. W. Robinson
W. S. Brockway

E. C. Peters Attorney

UNITED STATES PATENT OFFICE.

WILLIAM W. ROBINSON, OF RIPON, AND WILLIAM S. BROCKWAY, OF
MILWAUKEE, WISCONSIN.

GAGE FOR GAS-COCKS.

SPECIFICATION forming part of Letters Patent No. 422,449, dated March 4, 1890.

Application filed December 2, 1889. Serial No. 332,315. (No model.)

To all whom it may concern:

Be it known that we, WILLIAM W. ROBINSON, of Ripon, county of Fond du Lac, and WILLIAM S. BROCKWAY, residing at Milwaukee, in the county of Milwaukee, and State of Wisconsin, both citizens of the United States, have invented certain new and useful Improvements in Gas-Gages; and we do hereby declare the following to be a full, clear, and exact description of the invention, such as will enable others skilled in the art to which it appertains to make and use the same.

This invention relates to improvements in devices for regulating the flow of gas; and it consists in the novel construction and arrangement of a detachable disk having graduating marks and a pointer or finger removably attached to the cut-off cock, all as will be hereinafter fully described.

The annexed drawings, to which reference is made, fully illustrate our invention, in which—

Figure 1 represents a plan view of our device. Fig. 2 is a side view of the same. Fig. 3 is a perspective view of the plate detached from gas-pipe. Fig. 4 is a sectional view of the same, and Fig. 5 is a perspective view of the pointer.

Referring by letter to the accompanying drawings, A designates a common gas-pipe, usually employed in conducting gas to dwellings and other buildings, and B represents the inlet and cut-off cock therefor, both of which are of the old and well-known kind, and to these we attach our invention, whereby we are enabled to regulate the flow of gas to the building to supply one or more burners, as may be desired.

C indicates a dial or disk, which is cut away in its center, leaving a space *a*, which surrounds the stop-cock aforesaid. This disk is provided on its upper face with marks and figures at four or more points thereon, so that any of the figures at either point may be used; and, as here shown, the figures repre-

sent one to forty or more, corresponding with that number of burners (or less) in a building. This disk or plate is attached to the pipe by two side spring-clamps *b b*, which are on the under side of said plate, and consists of longitudinal spring-arms *c c*, having upwardly-bent arms *d d*, which are secured to the plate, and when the latter is adjusted to the gas-pipe the spring-arms firmly clamp said pipe and hold the plate thereto.

D represents a finger or pointer, which is detachably connected to the cock, the attaching end of which is forked, the extreme ends of which are provided with eyes *e e*, through which passes a bolt *f*, having a nut *g*. Thus when the nut is screwed up it firmly secures the pointer to the cock. This pointer, being firmly held to the cock, revolves with it and points to the numbers on the dial-plate, and thus indicates the number of burners in a building being supplied with gas, and the flow of gas can be regulated to suit or supply any number of burners.

What we claim, and desire to secure by Letters Patent, is—

The combination, with the gas pipe and cock, of the disk C, having a cut-away portion *a* and graduated as shown, the spring-arms secured to the under side of this disk, forming clamps therefor, the angular detachable pointer D, having the bifurcated end provided with eyes *e e*, and the bolt and nut therefor, the whole adapted to operate as and for the purpose specified.

In testimony whereof we affix our signatures in presence of two witnesses.

WILLIAM W. ROBINSON.
WILLIAM S. BROCKWAY.

Witnesses for William W. Robinson:

W. R. LYLE,
W. B. HAZELTINE.

Witnesses for William S. Brockway:

ADOLPH SEGELITZ,
A. G. JAEGER.