

(No Model.)

E. L. SMITH.
CORSET.

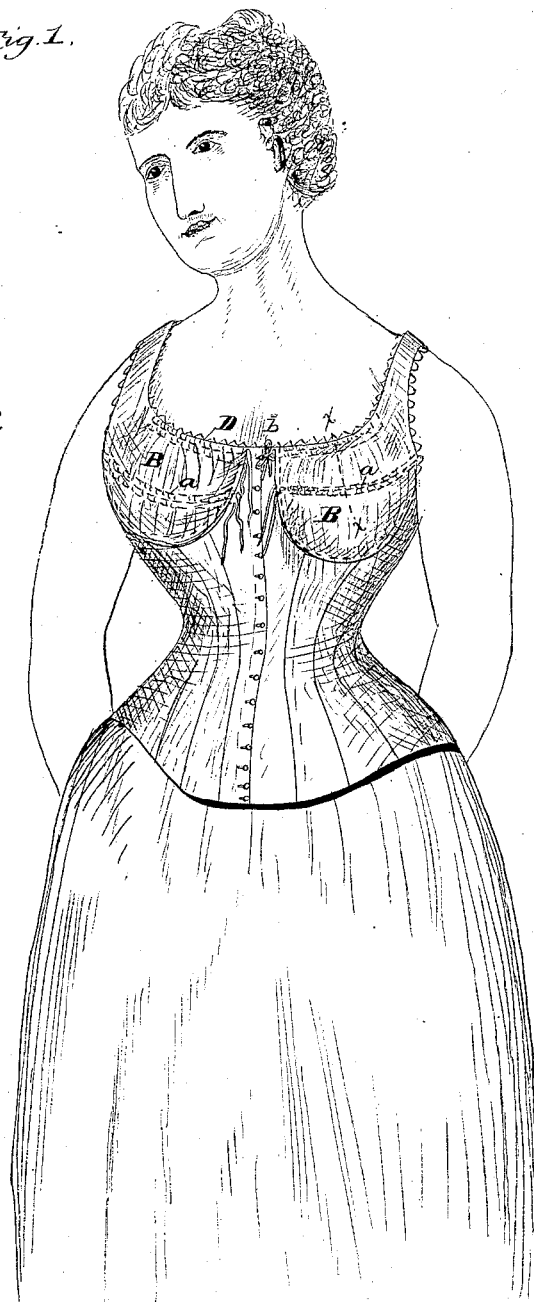
2 Sheets—Sheet 1.

No. 422,985.

Patented Mar. 11, 1890.

Fig. 1.

Fig. 2.



Witnesses:
Fred. Cornwall

L. S. Bacon

Inventor:
Emmet L. Smith

Per
James W. Hutton
att'y.

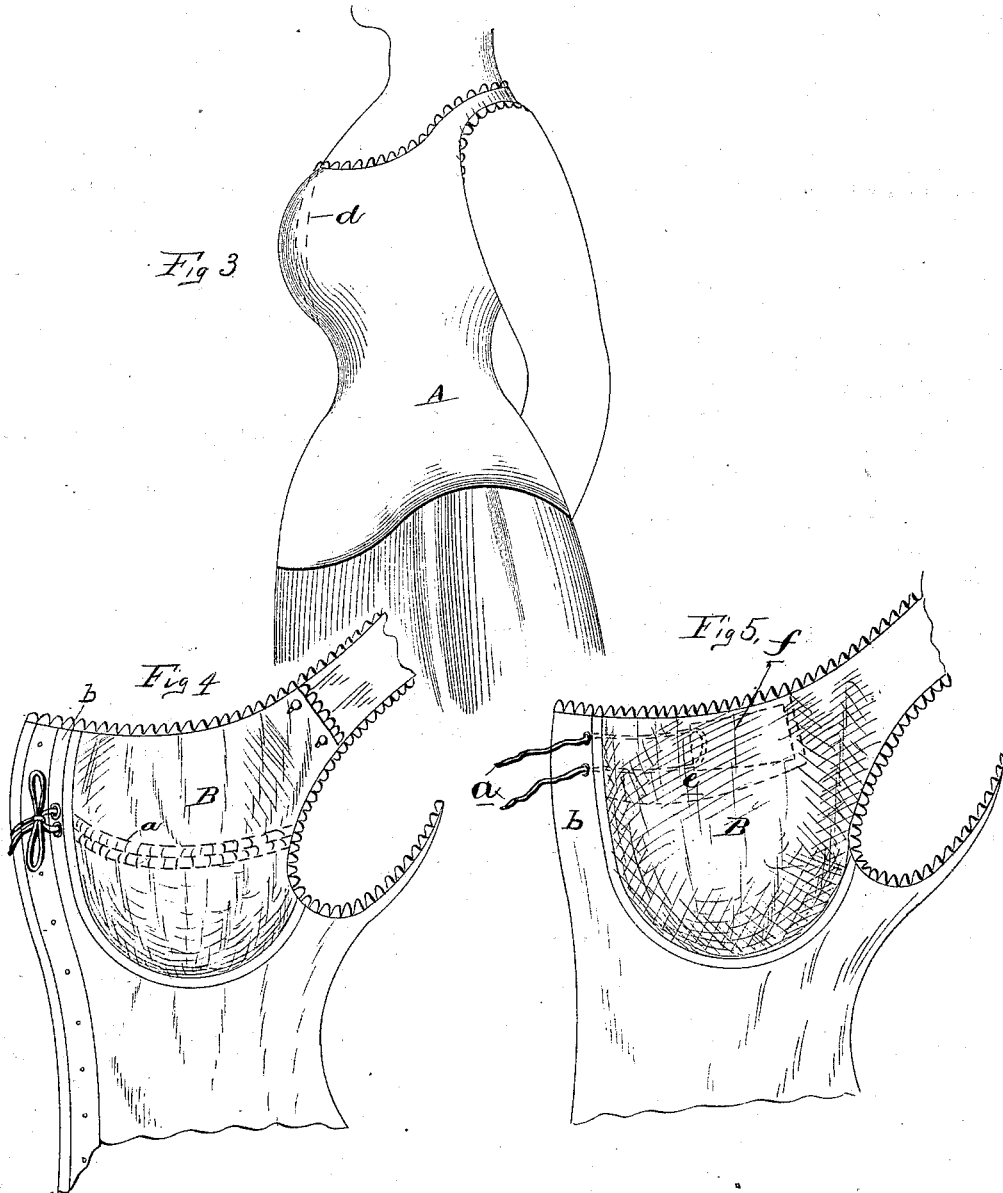
(No Model.)

2 Sheets—Sheet 2.

E. L. SMITH.
CORSET.

No. 422,985.

Patented Mar. 11, 1890.



Witnesses
Fred. R. Cornwall,
L. S. Bacon

Inventor
Emmet L. Smith
per
James Whittenmore
his atty-

UNITED STATES PATENT OFFICE.

EMMET L. SMITH, OF JACKSON, MICHIGAN, ASSIGNOR TO THE RELIANCE
CORSET COMPANY, OF SAME PLACE.

CORSET.

SPECIFICATION forming part of Letters Patent No. 422,985, dated March 11, 1890.

Application filed December 2, 1889. Serial No. 332,302. (No model.)

To all whom it may concern:

Be it known that I, EMMET L. SMITH, a citizen of the United States, residing at Jackson, in the county of Jackson and State of Michigan, have invented certain new and useful Improvements in Corsets, of which the following is a specification, reference being had therein to the accompanying drawings.

This invention relates to new and useful improvements in corsets; and the invention consists in the peculiar construction of the breast portion of the corset, whereby it is made adjustable to wearers of different sizes by means of one or more gathering-strings arranged across the breast portions of such corsets, all as more fully hereinafter described and claimed, and shown in the accompanying drawings, in which—

Figure 1 is a perspective view of a corset embodying my invention. Fig. 2 is a vertical central section thereof on line *x x* in Fig. 1. Fig. 3 is a diagram elevation showing the adjustment of the corset. Figs. 4 and 5 are perspective views showing modifications of the gathering-strings.

A is the corset-body, which is constructed in the usual manner, cut away at its upper portion into a semicircular shape and provided with the flexible breast portions B, which, as is usual in such cases, I preferably make of two thicknesses of material. Across the front of the breast portion are arranged the gathering-strings C, which may consist of a single one, as shown in Fig. 4, or two, one arranged centrally across the front of the breast portion, and the other D arranged at the upper edge. These gathering-strings are preferably secured in position between the two thicknesses of the flexible breast portion by means of the seams *a* on either side thereof. These gathering-strings are attached to the extensions *b* of the body portion of the corset, which extend upwardly beside the breast portion to the upper edge of the corset. When

the gathering-strings are let out to their fullest extent, the breast portion, which is of pocket-like shape, is allowed to expand to its fullest extent, as shown in full lines in Fig. 3. If it is desired to decrease the size of the breast portion, by drawing upon the gathering-strings the flexible breast portion is gathered into folds, thus fitting the pockets to the breasts and preventing the top cords from binding, and it may be drawn into the size shown in dotted lines in Fig. 3, or, if desired, may be made perfectly flat, as shown in dotted lines *d* in Fig. 3. Any degree of adjustment may be obtained to suit the wearer. The adjustment of the upper edge I deem as of no importance in my invention, as the adjustment at that point simply brings the upper edge of the corset down toward the neck of the wearer, and has no effect whatever in adjusting the size of the breast-pocket. This adjustment may be accomplished, if desired, as shown in Fig. 5, by forming a wide pocket *e* in the breast portion, and inserting therein the stiffening material *f*, of the same width, or nearly so, as the pocket *e*, and attaching the gathering-strings *a* to the end of the stiffening portion *f*, which will act as a series of gathering-strings arranged in the same location.

What I claim as my invention is—

A corset having cutaway-breast portions and flexible pockets of two thicknesses secured therein, with draw-strings arranged centrally in said pockets and transversely thereto, the said draw-strings at their forward ends passing through the front portion of the body of the corset, substantially as described.

In testimony whereof I affix my signature in presence of two witnesses.

EMMET L. SMITH.

Witnesses:

F. G. CARLOW,
BYRON STILLSON.