

(No Model.)

C. MORRILL.  
BENCH STOP.

No. 457,363.

Patented Aug. 11, 1891.

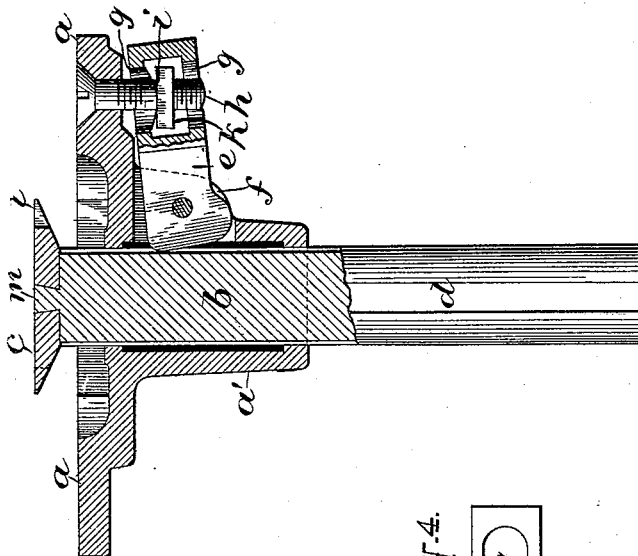


Fig. 2-

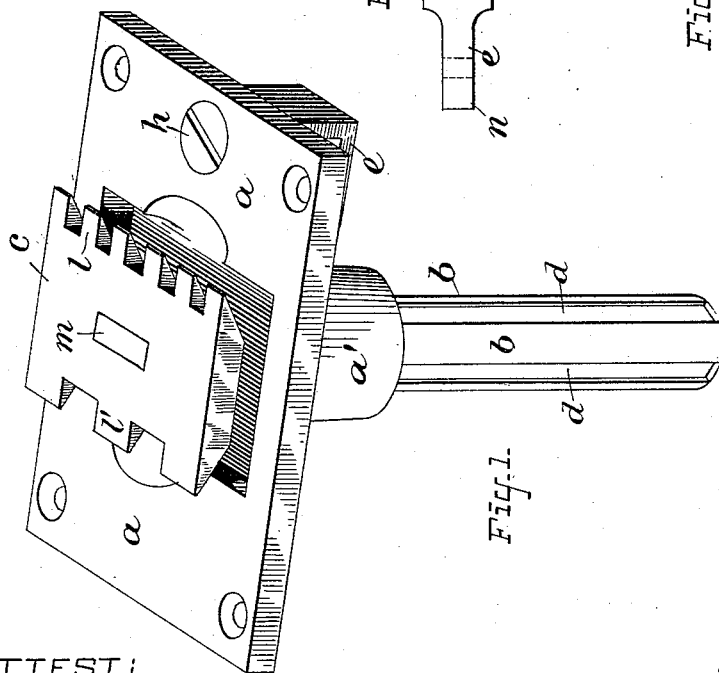


Fig. 1.

Fig. 4.

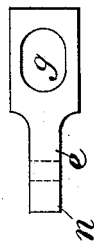
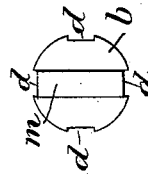


Fig. 3.



ATTEST:  
*Wm. H. Cooper,*  
*Thos. F. Conner.*

INVENTOR:  
*Chas. Morrill*  
*J. Mudd*

By

*Attorney*

# UNITED STATES PATENT OFFICE.

CHARLES MORRILL, OF NEW YORK, N. Y.

## BENCH-STOP.

SPECIFICATION forming part of Letters Patent No. 457,363, dated August 11, 1891.

Application filed July 30, 1890. Serial No. 360,419. (No model.)

*To all whom it may concern:*

Be it known that I, CHARLES MORRILL, a citizen of the United States, and a resident of New York, in the county of New York and State of New York, have invented certain new and useful Improvements in Bench-Stops, of which the following is a specification.

My invention consists of a bench-stop having a fulcrumed locking device connected therewith, all of which will be fully described hereinafter.

In the accompanying drawings, Figure 1 represents a perspective view of the device. Fig. 2 represents a vertical section of the same, in which the main features of my invention are shown. Fig. 3 is a plan view of the shank or neck having the stop-plate removed therefrom. Fig. 4 is a detached plan view of a part of the locking device.

Similar letters refer to similar parts throughout the drawings, in which—

*a* represents a metallic base plate or holder provided with a centrally-depending hollow neck *a'*, adapted to receive the cylindrical neck or shank *b*, having the stop-plate *c* mounted upon the upper end thereof. The neck or shank *b* aforesaid is provided with a series of grooves *d*, the latter adapted to engage with the locker *e*, fulcrumed to the flanges *f*, which are integral with the hollow neck *a'*. One end of the locker *e* is made square in shape, the two vertical sides thereof being perforated and the top and bottom provided with elongated slots *g*. The object of the latter is to permit the screw-threaded bolt *h* to play freely therein, while the nut *i* plays freely in the opening *k*. Said bolt *h* passes, of course, downwardly through the base plate or holder *a* aforesaid. There are in this case four edges to the stop-plate *c*, one of which is provided with small teeth *l*, another with larger teeth *l'*, while the remaining edges are perfectly plain.

In the construction of the device the upper end of the neck or shank *b* is provided with a projecting lug or tenon *m*, upon which is

mounted the stop-plate *c*, having a beveled slot made therein. The smaller opening thereof passes over the projecting lug *m*, which is hammered upon until it shall have filled the slot of the stop-plate aforesaid, after which the whole is finished off ready for use.

Mode of operation: After the base plate or holder shall have been mounted properly upon a bench it is then ready to receive the grooved neck or shank *b*. One of the grooves *d* is at all times engaged with the end *n* of the locker *e*. When the stop-plate shall have been raised by hand to the desired height, the screw-threaded bolt is turned slightly by means of a screw-driver, thereby elevating the outer end of the locker and forcing the inner end down tightly into the groove *d*, thus locking the stop-plate and its shank or neck. It is immaterial which of the edges the workman desires to work against, as he can unlock the device and withdraw the stop-plate and arrange it so as to bring either of the edges into position to be worked upon.

Having thus described my invention, what I claim as new, and desire to secure by Letters Patent, is—

The combination, with the base plate or holder having a vertically-grooved cylindrical neck or shank having a stop-plate mounted on the end thereof, of the locker fulcrumed to said base plate or holder and engaging with the vertical grooves of the cylindrical shank aforesaid, said locker being provided with a horizontal opening in the vertical sides thereof, the upper and lower surfaces being also provided with elongated slots, the screw-threaded bolt playing within said slots, and the nut mounted on said bolt within the horizontal opening aforesaid, substantially as shown and described.

Signed at New York, in the county of New York and State of New York.

CHAS. MORRILL.

Witnesses:

L. T. EARLL,  
ALFRED R. TORRES.