

(No Model.)

J. SHIELDS.
PIANO HINGE.

No. 457,894.

Patented Aug. 18, 1891.

FIG. 1.

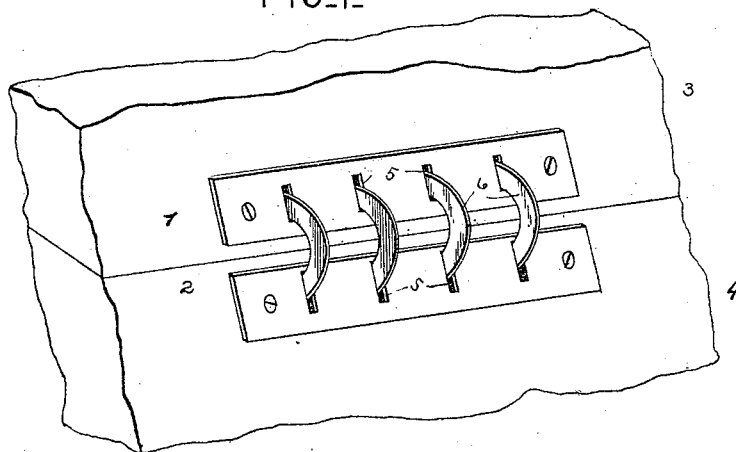


FIG. 3.

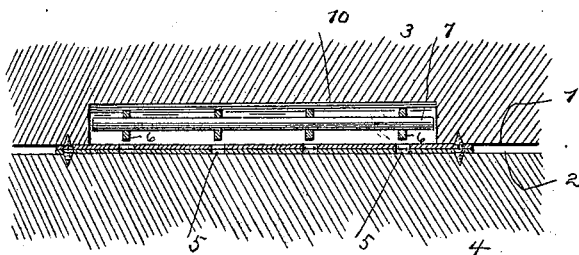


FIG. 2.

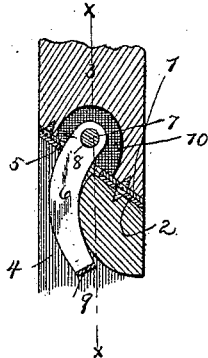


FIG. 4.

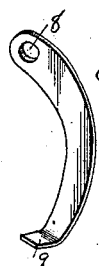
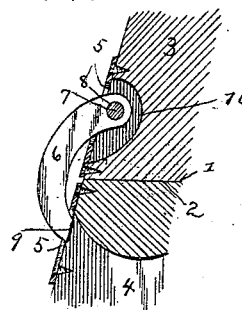


FIG. 5.



Witnesses

B. S. Ober

H. T. Riley

By *his* Attorneys,

C. A. Snow & Co.

Inventor

Josephine Shields

UNITED STATES PATENT OFFICE.

JOSEPHINE SHIELDS, OF CHICAGO, ILLINOIS.

PIANO-HINGE.

SPECIFICATION forming part of Letters Patent No. 457,894, dated August 18, 1891.

Application filed April 11, 1891. Serial No. 388,554. (No model.)

To all whom it may concern:

Be it known that I, JOSEPHINE SHIELDS, a citizen of the United States, residing at Chicago, in the county of Cook and State of Illinois, have invented a new and useful Piano-Hinge, of which the following is a specification.

The invention relates to improvements in hinges.

10 The object of the present invention is to provide for pianos and the like a simple and inexpensive hinge, which will be concealed when the fall-board is closed, and which will present a neat and ornamental appearance 15 when the piano is open.

The invention consists in the construction and novel combination and arrangement of parts hereinafter fully described, illustrated in the accompanying drawings, and pointed 20 out in the claim hereto appended.

In the drawings, Figure 1 is a perspective view of a hinge constructed in accordance with this invention. Fig. 2 is transverse sectional view. Fig. 3 is a longitudinal sectional view. Fig. 4 is a detail perspective 25 view of one of the curved bars. Fig. 5 is a transverse sectional view, the hinge being open.

Referring to the accompanying drawings, 1 30 and 2 designate leaf-plates, which are secured to the opposed faces of the fall-board 3 and the frame 4 of a piano, and which are provided with a series of slots 5. The fall-board and the frame are recessed, and the leaf-plates, which are secured by screws, are connected by a series of curved bars 6, which are 35

secured in the recess of the fall-board by a pin 7 passed through the perforated ends of said bars, said pin bearing against the inner face of the plate 1. The ends 9 of the curved bars are bent at an angle to form lugs which engage the inner face of the leaf-plate 2 when the fall-board is thrown back. In raising and lowering the fall-board the inner curved edges of the bars are arranged against the curved 45 face 10 of the recess of the piano-top and are guided and braced by the same.

The hinge is designed to be constructed of suitable sheet metal, and is to be silver or nickel plated, and when the hinge is open the 50 parts will present a neat and attractive appearance, and when the piano is closed the hinge will be concealed.

From the foregoing description and the accompanying drawings, the construction, operation, and advantages of the invention will 55 readily be understood.

What I claim is—

A hinge comprising the plates provided with slots, the curved bars connecting the 60 plates and provided at one end with a perforation and at the other end with a lug to limit the swing of the plates, and the pin passing through the perforations of the bars, substantially as described. 65

In testimony that I claim the foregoing as my own I have hereto affixed my signature in presence of two witnesses.

JOSEPHINE SHIELDS.

Witnesses:

GEO. F. BROWN,
D. A. PEIRCE.