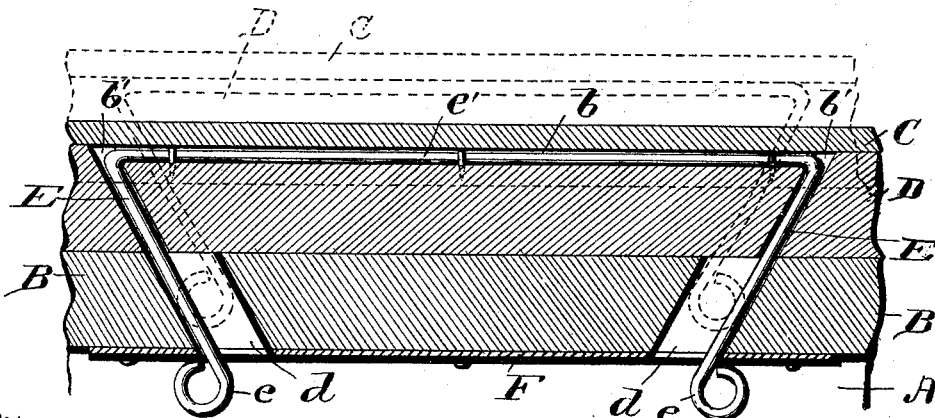
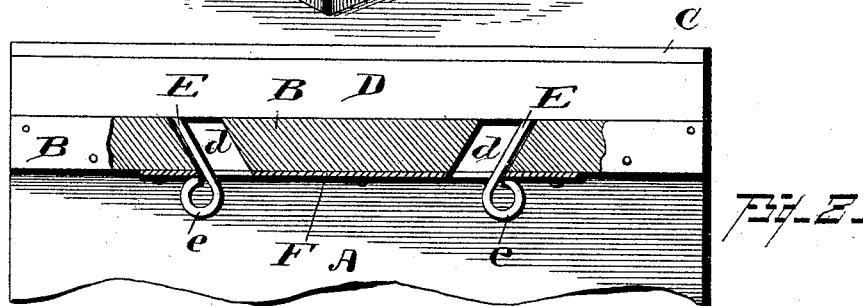
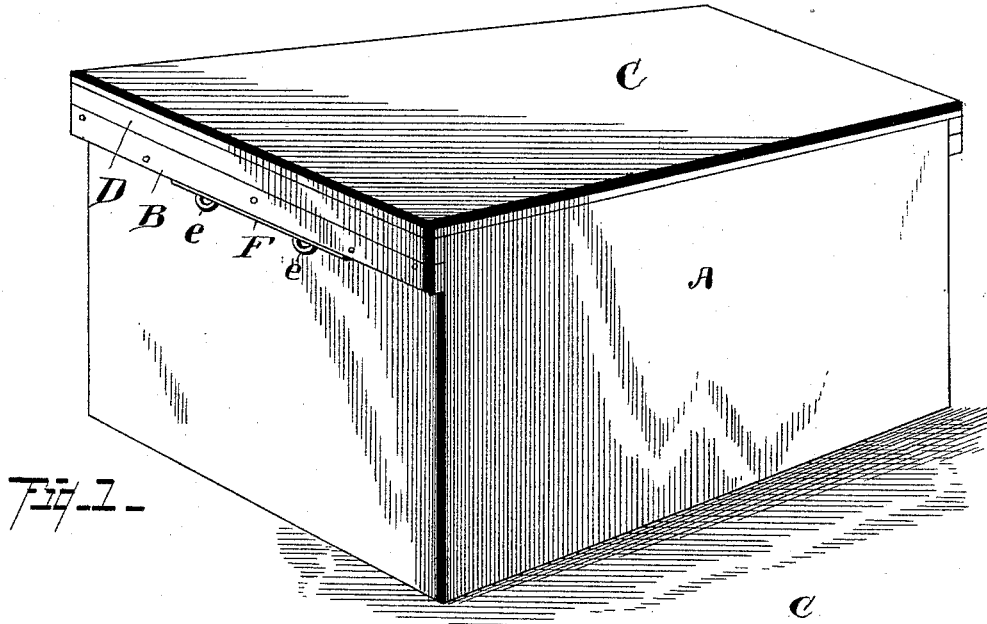


(No Model.)

J. E. PAYTON.
BOX FASTENER.

No. 458,857.

Patented Sept. 1, 1891.



Witnesses
Albert Spinden.
Van Burck Hilgard.

Fig. 3--

By his

Inventor
Josiah E. Payton.
Attorney
R. A. H. H. H.

UNITED STATES PATENT OFFICE.

JOSIAH E. PAYTON, OF RED OAK, KENTUCKY.

BOX-FASTENER.

SPECIFICATION forming part of Letters Patent No. 458,857, dated September 1, 1891.

Application filed May 1, 1891. Serial No. 391,191. (No model.)

To all whom it may concern:

Be it known that I, JOSIAH E. PAYTON, a citizen of the United States, residing at Red Oak, in the county of Grayson and State of Kentucky, have invented certain new and useful Improvements in Egg-Case Fasteners; and I do hereby declare the following to be a full, clear, and exact description of the invention, such as will enable others skilled in the art to which it appertains to make and use the same.

This invention relates to fasteners for shipping boxes or crates for eggs, fruit, or other commodities that are usually shipped in cases.

The purpose of the invention is to provide a fastening to hold the cover in place against lateral strain, the fastening being specially constructed to withstand the lateral strain to which the covers of such shipping-cases are subjected.

The improvement consists of the novel features and the peculiar construction and combination of the parts, which will be herein-after more fully described and claimed, and which are shown in the annexed drawings, in which—

Figure 1 is a perspective view of a case having the cover secured thereon by my improved fastener. Fig. 2 is an end view, the lower portion of the case and a portion of the cleat on the case being broken away. Fig. 3 is a central vertical section of the middle portion of the cover, showing the operation of the fastener by dotted lines.

The case A is of ordinary construction, being provided at each end with a cleat B. The cover C is provided at each end with a cleat D, which overlaps the end of the case and rests upon the cleat B. The meeting faces of the cleats B and D are straight, being cut from strips of wood.

The fastening comprises, essentially, two spring members E E, which are located some distance apart and which converge from the upper to their lower ends, the angle of convergence of each being about forty-five degrees. The upper ends of the spring members E E are secured to the cleat B, and their lower ends are adapted to enter and pass through openings *d* in the cleat D, the openings being convergent to correspond with the angle of convergence of the members E E. The lower ends of the members E E have lateral extensions *e e*, which overlap the under side of the cleat D and hold the cover in

place. The wear-plate F on the under side of the cleat D protects the same from injurious wear. The fastener is preferably constructed of stout wire, having its ends bent to form the converging members E E and the eyes or lateral extensions *e e* at the lower extremities of the members E E. The connecting portion *e'* between the members E E is straight and rests in a groove *b* in the upper side of the cleat B, so as to be out of the way. The openings *b'* in the cleat B for the members E E to pass through are just large enough to admit the passage of the members E E, the eyes *e* at the ends of the members E E being formed after the said members E E have been passed through the said openings *b'*. When the cover is placed on the case, the lower ends of the members E E come opposite the openings *d*, and by pressing down on the cover the members are compressed and separate the moment the extensions or eyes *e e* clear the lower side of the cleat D to engage the said extensions with the under side of the said cleat. To remove the cover the lower ends of the members E E are pressed together until the extensions *e e* clear the sides of the openings *d*, when an upward pull on the cover will remove it.

Having thus described my invention, what I claim, and desire to secure by Letters Patent, is—

The combination, with a box and the cleat B, secured to the box and having the separate and independent openings *d d*, which converge at their lower ends, of the cover, the cleat D, secured to the cover and having the independent converging openings *b' b'*, which correspond with the converging openings *d d*, and having the groove *b*, connecting the diverging ends of the openings *b' b'*, and the fastener composed of a single wire, which is held in groove *b* between the cleat D and the cover and which has its ends bent and projected through the openings *b' b'* and beyond cleat D and adapted to be sprung through the said openings *d d*, which bent ends of the wire terminate in lateral projections *e e*, substantially as and for the purpose described.

In testimony whereof I affix my signature in presence of two witnesses.

JOSIAH E. PAYTON.

Witnesses:

M. H. ROWE,
W. C. ROWE.