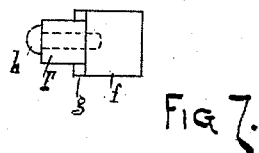
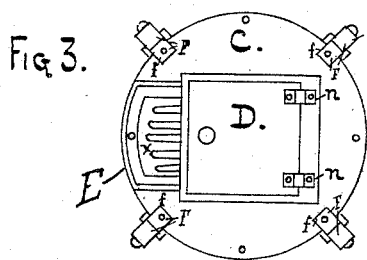
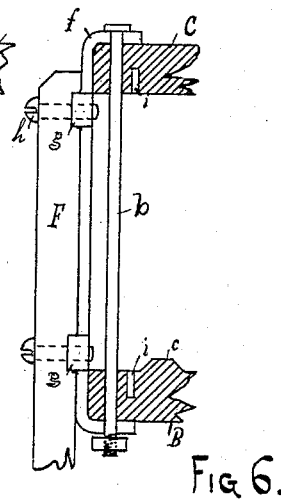
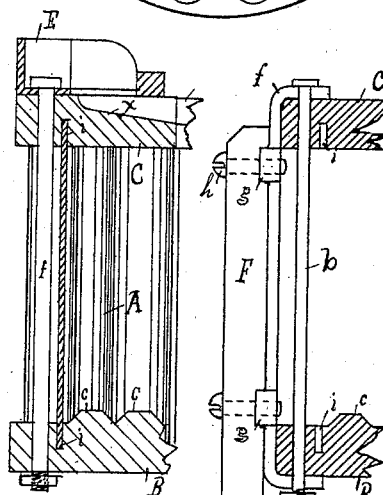
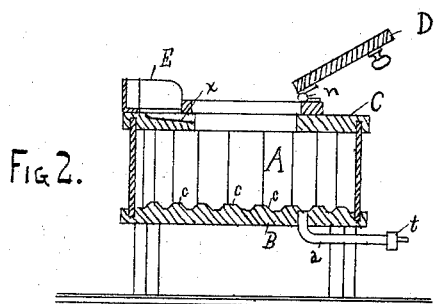
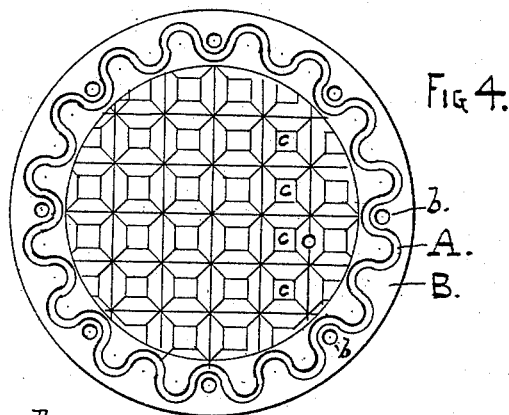
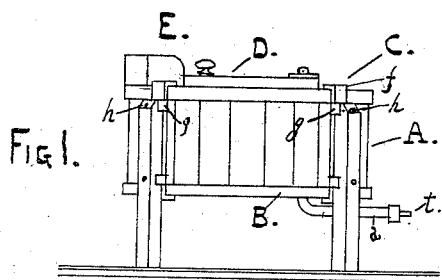


(No Model.)

E. G. MINNEMEYER.  
WASHTUB.

No. 489,082.

Patented Jan. 3, 1893.



Witnesses.  
Robt McCormick  
Chas A Tiffet

Inventor.  
Edward G. Minnemeyer.  
By W. V. Tiffet  
Atty.

# UNITED STATES PATENT OFFICE.

EDWARD G. MINNEMEYER, OF PEORIA, ILLINOIS.

## WASHTUB.

SPECIFICATION forming part of Letters Patent No. 489,082, dated January 3, 1893.

Application filed August 31, 1891. Serial No. 404,182. (No model.)

### *To all whom it may concern:*

Be it known that I, EDWARD G. MINNEMEYER, a citizen of the United States, residing at the city of Peoria, in the county of Peoria and State of Illinois, have invented certain new and useful Improvements in Washing-Vessels; and I do hereby declare that the following is a full, clear, and exact description of the invention, which will enable others skilled in the art to which it appertains to make and use the same.

My invention relates to certain new and useful improvements in washing vessels or receptacles by means of which a vessel is constructed very simple, durable and effective for the purpose for which it is designed.

More particularly my invention relates to a receptacle within which or in combination with which there is designed to be used a washing apparatus consisting of a revolving stirrer operating within the vessel.

The essential features of my invention consist in the general construction which makes it of practical utility and is composed of wood and sheet metal to form the receptacle or vessel the sides being of corrugated sheet metal with the usual top provided with a lid and the bottom formed on the inner surface of a series of raised portions or embossed to produce an uneven surface and of a clamping means for securely holding the receptacle together and for attachment of legs to the receptacle.

That my invention may be more fully understood reference is had to the accompanying drawings, in which:

Figure 1 is a side view of my improved washing vessel. Fig. 2 is a vertical sectional view through the body of the vessel. Fig. 3 is a plan view. Fig. 4 is an enlarged detailed view of the corrugated side and embossed bottom surface. Fig. 5 is a detail view of construction. Fig. 6 is a detail view showing a clamping means. Fig. 7 is a detail view.

In the drawings A is the corrugated sheet metal sides of the vessel.

B is the bottom of the vessel and C the top.

D is a lid hinged as at (n-n).

E is a circular plate fixed to the edge of the upper surface to form means for the attachment of a wringer.

(a) is an escape pipe provided with the stop (t) which may be threaded.

(c-c) are raised portions which form the embossed surface of the bottom of the vessel. 55

(b-b) are metal rods or bolts provided with head and tap.

(f) is a clamp designed to bear over the upper and lower edges of the vessel and to be bolted thereto to hold the top and bottom firmly in contact with the respective upper and lower edges of the corrugated sheet metal sides best shown in Fig. 6.

F are the legs secured to the clamp (f) by means of the flanges (g) and screw (h). 55

(x) is a grip board provided with grooves to return the water escaping from the process of wringing into the receptacle.

(i) are grooves in the top and bottom within which are fitted the corrugated sides as shown in Figs. 5 and 6. 70

When in use in combination with a washing machine provided with a rotary reciprocating rubber it will be seen that the form of the elements of construction of the bottom and sides of the vessel form a very useful and material part of such combined use inasmuch as they present varied surfaces over which the articles within the vessel are rubbed, thus materially aiding and hastening the cleaning of the same and the surfaces are so formed that they in no wise damage the articles being washed. The plate E forms a very convenient support for a wringer and the drip-board (x) provides a ready escape for water back into the receptacle and the escape pipe (a) provides a ready means for emptying the tub and the clamp (f) provides a very strong and durable means of holding the vessel in proper form and by means of the bolts used in connection therewith the top and bottom may be drawn more closely in contact with the sides in case of leakage occasioned by decay of the vessel in any part or if the same should become racked by rough usage. 95

If desired the form of some of the elements may be changed. The sheet metal corrugated sides may be changed to an embossed sheet metal side or any other element herein shown may be modified to suit the application in which it may be desired to be used. 100

Having thus fully described my invention

what I claim and desire to secure by Letters Patent is:

5 The combination with the corrugated sheet metal body A, having the edge thereof fitted into the grooved top C and bottom B, the said top having the lid D hinged as shown and the grooved inclined drip board, and the bottom having the raised faces *c-c* &c. of the clamp (*f*) provided with flanges *g*, the connecting

bolts *b*, and legs F, secured between the ro flanges *g*, by the screws *h*, all substantially as described and set forth.

In testimony whereof I affix my signature in presence of two witnesses.

EDWARD G. MINNEMEYER.

Witnesses:

CHAS. A. TEFFT,  
BOB McCORMICK.