

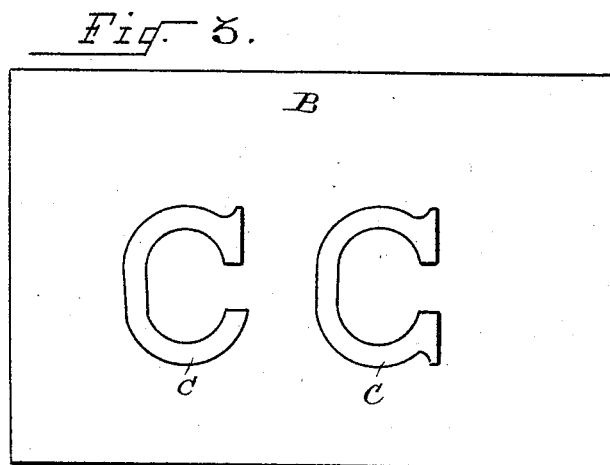
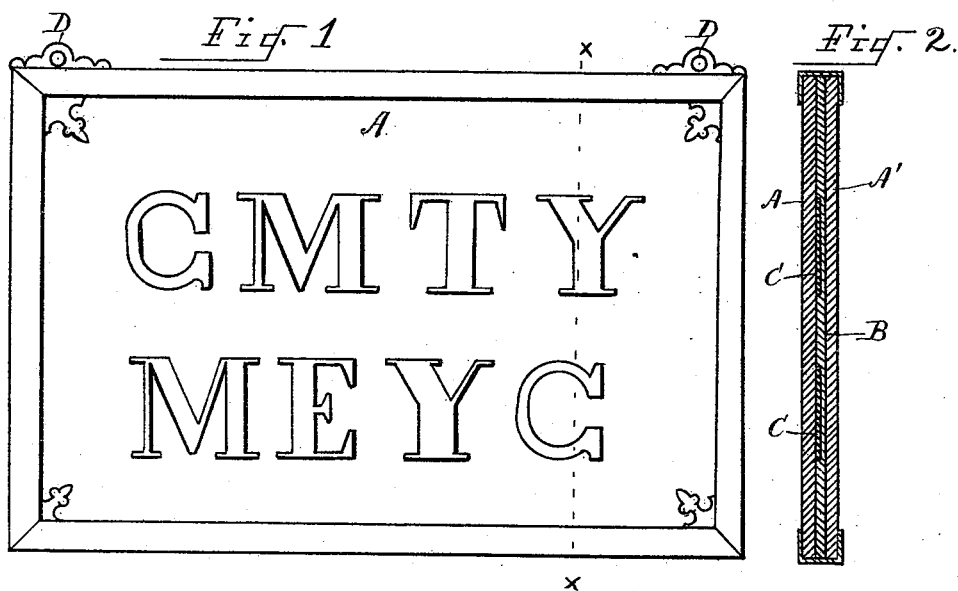
(No Model.)

2 Sheets—Sheet 1.

M. HOLFERT.
SIGN.

No. 490,654.

Patented Jan. 31, 1893.



WITNESSES
Geo. McLaughlin
Jacob A. Eokes

INVENTOR
Max Holfert
By Toulmin & Toulmin
His Attorneys

M. HOLFERT.

SIGN.

No. 490,654.

Patented Jan. 31, 1893.

Fig. 4.

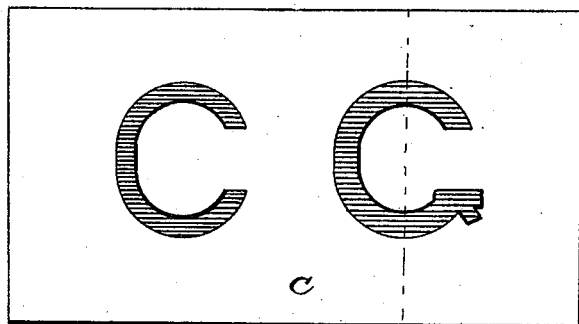


Fig. 5.

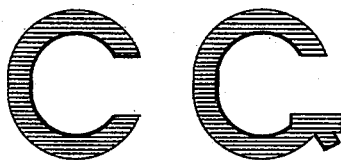
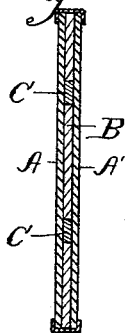


Fig. 6.



WITNESSES
H. M. Plaisted.
J. G. Hawley.

INVENTOR
Max Holfert
By. Toulmin & Toulmin, Attorneys.

UNITED STATES PATENT OFFICE.

MAX HOLFERT, OF DAYTON, OHIO.

SIGN.

SPECIFICATION forming part of Letters Patent No. 490,654, dated January 31, 1893.

Application filed June 22, 1891. Serial No. 397,012. (No model.)

To all whom it may concern:

Be it known that I, MAX HOLFERT, a citizen of the United States, residing at Dayton, in the county of Montgomery and State of Ohio, have invented certain new and useful Improvements in Signs, of which the following is a specification, reference being had therein to the accompanying drawings.

This invention relates to improvements in signs, and has for its object to furnish a cheap and attractive sign of semi-transparent material in contrasting colors, and it consists, essentially, in cutting or stamping out of celluloid sheets certain forms constituting letters of the alphabet or ornamental designs, and in inlaying in such openings, letters or ornamental designs cut from different colored celluloid sheets, and in placing such back-ground so inlaid between transparent plates, as glass, and then the latter in a suitable frame, all as hereinafter more fully pointed out and particularly specified in the claim.

In the accompanying drawings forming a part of this specification and on which like reference letters indicate corresponding parts: Figure 1, represents a front elevation of my improved sign; Fig. 2, a sectional view of Fig. 1 on line *xx*; Fig. 3, a view of a sheet constituting the backing or back-ground with openings cut through, representing the letters C and G; Fig. 4, a similar view of the backing or back-ground showing the openings with letters inlaid therein; Fig. 5, a view of such letters detached, and Fig. 6 a sectional view on the line *a, b*, of Fig. 4, showing the letter inlaid in the back-ground.

The letter A indicates the front sheet of glass and the letter A' the rear sheet. Between these sheets or panes of glass, or equivalent transparent material, is placed the backing or back-ground C of celluloid, which being semi-transparent lights up the back-ground. In this celluloid are cut, stamped or otherwise made, openings in the form of letters of the alphabet, or in the form of designs, which are to constitute the sign.

From a sheet of celluloid contrasting in color with the back-ground sheet, are produced, as by stamping, cutting or otherwise,

letters of the alphabet, as shown in Figs. 4 and 5 or are produced ornamental designs so cut out, stamped &c. Such letters or designs so produced are then fitted or inlaid in the openings in the back-ground. Such letters or designs being of semitransparent material also light up well. Then being in contrasted colors with the back-ground produce a very attractive and effective sign. The sheets or panes of glass are mounted in a suitable frame, as shown in Figs. 1 and 2, so that they are held tightly against the back-ground and the inlaid letters or designs. The effect of a semitransparent back-ground of one color and of semitransparent letters or designs inlaid therein, and of another or contrasted color, is to arrest attention and is very pleasing.

I am aware that it has been proposed to paint letters on opaque substances, as cardboard, and perforate such letters by producing numerous holes in the substances on which the letters were painted, whereby light may shine through the openings so appearing in the letters. I am also aware that it has been proposed to produce letters or symbols on pieces of fabric and to place sheets of mica or isinglass on both sides of such fabric. I am further aware that it is not new to make a self sustaining flexible transparent sign of celluloid, by crimping the sheet to form a stiffened border around the same. But each and all of these prior devices differ essentially from my sign, wherein a semi-transparent back ground has letters or designs cut out of it, and semi-transparent letters or designs cut out and fitted or in-laid into such openings, the male and female features being in contrasting colors, and the whole clamped between transparent sheets, as glass. My construction differs from such prior devices. The effect is different and the article radially and distinctively different from them.

Having thus fully described my invention what I claim as new and desire to secure by Letters Patent is:

As an improved article of manufacture, the hereindescribed sign, the same consisting of semitransparent letters or designs and a semitransparent back ground, the color of the let-

ters or designs and the color of the back-ground being in contrast, the letters or designs being flush on both faces with the corresponding faces of the back-ground, and consisting further of two transparent plates, one on each side of the back-ground, and means by which such plates are held against the back-ground so as to hold the letters or designs flush with the back-ground, in which they are inlaid.

In testimony whereof I affix my signature in presence of two witnesses.

MAX HOLFERT.

Witnesses:

MORTON TOUMIUN,
J. A. ECKES.