

(No Model.)

J. S. SMITH. LABEL HOLDER.

No. 490,687.

Patented Jan. 31, 1893.

Fig. 1

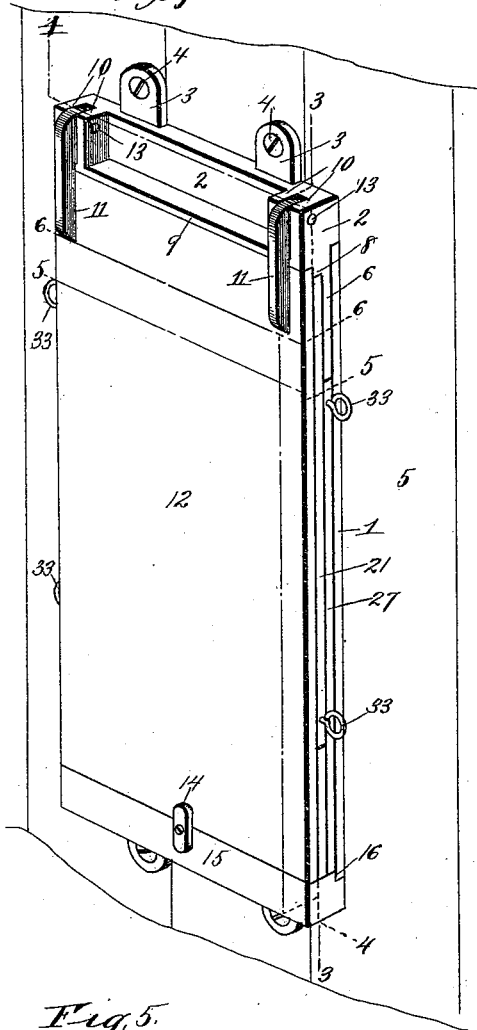


Fig. 2.

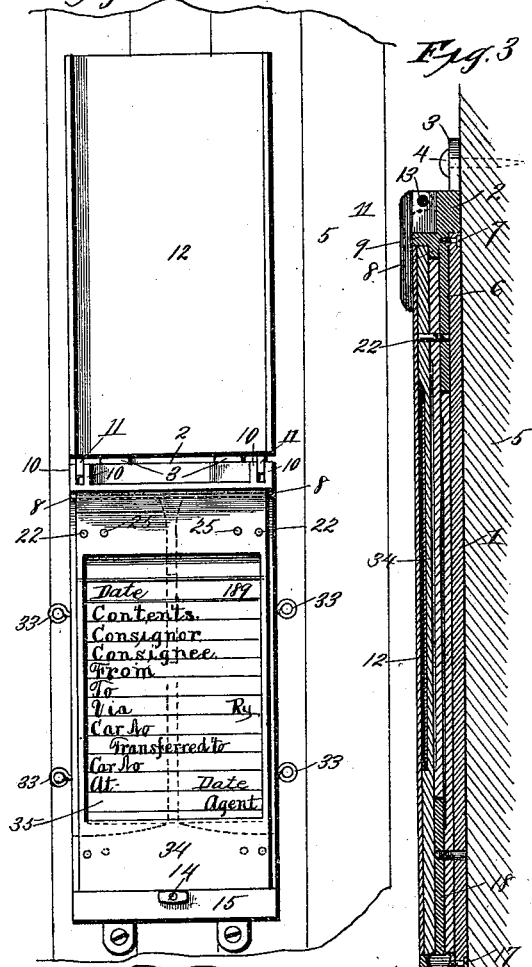


Fig. 3

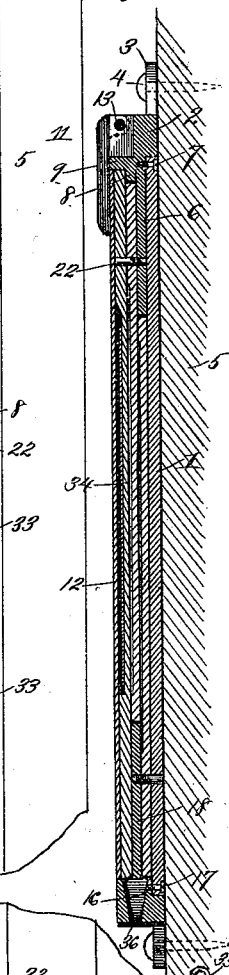


Fig. 5.

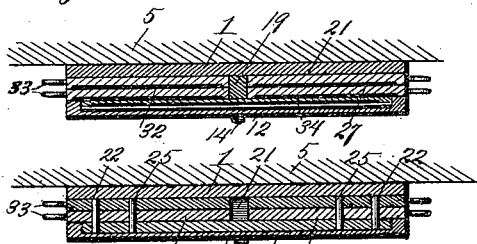
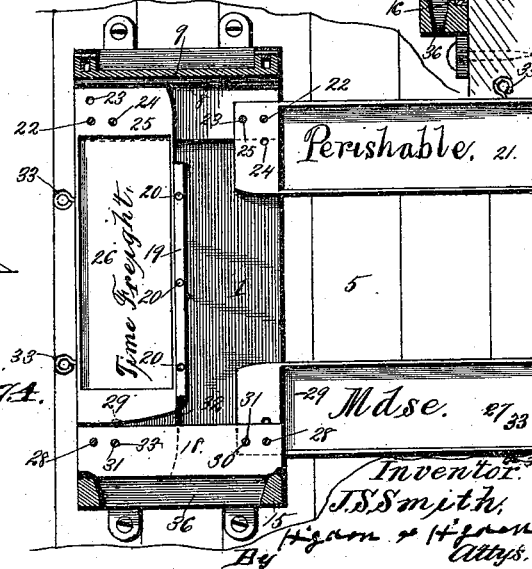


Fig. 6.

Witnesses:

J. S. Smith
J. W. L. Condon

Fig. 4.



UNITED STATES PATENT OFFICE.

JOHN S. SMITH, OF LEAVENWORTH, KANSAS.

LABEL-HOLDER.

SPECIFICATION forming part of Letters Patent No. 490,687, dated January 31, 1893.

Application filed April 21, 1892. Serial No. 430,009. (No model.)

To all whom it may concern:

Be it known that I, JOHN S. SMITH, of Leavenworth, Leavenworth county, Kansas, have invented certain new and useful Improvements in Freight-Car Card-Holders and Cards, of which the following is a full, clear, and exact description, reference being had to the accompanying drawings, forming a part hereof.

My invention relates to appliances for holding and displaying route and destination cards for freight-cars, and also cards designating the character of merchandise with which the car is loaded, and the objects of my invention are, first, to produce a card-holder which shall be simple, strong, durable, and inexpensive and also compact in its construction, and which shall be so constructed as to effectively protect the cards from injury by the weather, or by violent contact with external objects, while the cards are concealed within the holder, and which shall also clearly display any one or several of the cards, as required.

A further object of my invention is to produce a card holder which shall, in addition to the advantages above enumerated, be capable of effectively retaining and protecting the route-card, and which shall, at the same time permit the route-card to be readily seen whenever desired.

A still further object of my invention is to produce a card-holder which shall securely hold its cards and at the same time permit the cards to be readily removed from and replaced in the holder, as desired.

To the above purposes my invention consists in certain peculiar and novel features of construction and arrangement, as hereinafter described and claimed.

In order that my invention may be fully understood, I will proceed to describe it with reference to the accompanying drawings, in which;

Figure 1 is a perspective view of my improved card-holder, in closed condition. Fig. 2 is a front elevation of the same, with its face-plate raised to expose the route-card. Fig. 3 is a transverse vertical section of the holder, on the line 3—3 of Fig. 1. Fig. 4 is a transverse vertical section of the same, on the line 4—4 of Fig. 1; the card-holder being

partly opened and the plane of section being at right angles to that of Fig. 3. Fig. 5 is a horizontal cross-section of the same, on the line 5—5 of Fig. 1. Fig. 6 is a horizontal cross-section of the same, on the line 6—6 of Fig. 1.

In the said drawings, 1 designates the back or body portion of the card-holder, said back or body portion being either of wood or of metal, as preferred, and preferably of oblong rectangular form, as shown. At the upper end of this back or body-portion is formed, or suitably secured a top-piece 2, which is also of wood or metal, as preferred, and which corresponds in length with the width of the back or body portion 1 and which at its upper edge or margin, is formed with two, or any preferred number, of ears or lugs 3 through which are inserted screws 4 which also enter the side 5 of the car, or any other suitable or preferred portion of the car-body, and thus secure the holder to the car. The lower edge of this top-piece is formed with a pendent flange 6 which corresponds in length with the width of the back or body-portion 1; the upper end of said back or body portion being shown as secured to the flange by any suitable or preferred number of screws 7, or equivalent devices.

On its outer side, the top-piece 2 is formed with a horizontal rib or flange 9 which extends lengthwise longitudinally throughout the length of the top-piece, and the transverse dimension of which extends outwardly or forwardly from the said top-piece. From the under side of this flange 9 depends the short intermediate flange 8 corresponding in thickness from front to rear to the flange 6, but which is of much less depth than the flange 6, and which also corresponds in length with the width of the back or body portion. At its ends, this top-piece 2 is formed with two pairs of lugs or ears 10, one pair of said lugs or ears being located at each end of the top-piece, and said lugs being formed upon the front surface of the top-piece as shown. Between each pair of lugs or ears 10 is interposed one of two arms 11 which are formed upon the upper end of the face-plate or cover 12 of the machine; a pin or pintle 13 being passed horizontally through each pair of lugs 10 and also through the upper ends of the arms 11,

and the arrangement being such that the cover 12 can be raised and lowered as desired. This cover 12 is of oblong rectangular form and corresponds in width with the back or body portion 1 of the holder, and when in closed position, said cover is held by a turn-button 14 which is attached in customary manner to the front of the bottom-piece 15 of the holder. This bottom-piece 15 is either of wood or metal, as preferred, and is formed or suitably secured upon the lower end of the back or body-portion 1 of the holder, and at its upper side said bottom-piece is shown as formed with a longitudinal shoulder 16. The lower end of the back or body portion 1 is secured to this shoulder 16 by any suitable or preferred number of screws 17, or equivalent devices. The upper side of this bottom-piece 15 is also formed with a longitudinal and upwardly extending flange 18 which corresponds in length with the width of the back or body portion 1, and in height or width with the width or depth of the flange 6 of the top-piece 2. The back or body portion 1 is also provided with a vertical rib or division-piece 19 which is either formed integrally with the back or body portion 1 or which is secured thereto by screws 20, or equivalent means; said rib extending from just above the lower flange 18 to just below the upper flange 6, and being located midway of the width of the back or body 1.

21 designates a card-carrier which is either of wood or metal and which is preferably of approximately oblong rectangular form; the upper inner corner of the carrier being, however, preferably curved, as shown, to permit the required movements of the carrier. This carrier is connected to the front side of the upper flange 6 by a pivot-pin 22 which passes through the carrier near its upper outer corner, and also into the flange 6. This carrier is also formed in its upper portion with two holes 23 and 24 through one or the other of which is inserted a removable retaining-pin 25; the holes being so arranged that when the carrier is extended outward horizontally from the holder, the pin 25 is passed through the hole 23 and into the flange 6, and thus retains the carrier in such described position. When the carrier 21 is in its pendent folded position, the pin 25 may be inserted into the lower hole 24, and thus prevent the carrier from swinging outward from the holder. Upon its outer or front surface this carrier 21 displays the word "Perishable;" said word being either inscribed directly upon the carrier or upon a card which is tacked or otherwise secured upon said carrier. When in pendent or closed position, the inner margin of the carrier lies in contact with the right hand side of the rib 19. Upon the opposite side of the rib 19 is located a second carrier 26 which corresponds in all respects, as to material, form, and manner of attachment, with the carrier 21, just described; the carrier

being secured to the flange 6 by a pivot-pin 22 which passes through the upper part of the carrier near its outer upper corner. Said carrier 26 is also provided with the holes 23 and 24 and with removable retaining-pins 25, as before. This carrier 26 also displays the words "Time freight" which are either inscribed directly upon the carrier or upon a card which is suitably secured to said carrier.

At the right hand side of the rib 19 is mounted a third carrier 27 which is similar in form, material, and manner of attachment, to the carriers 21 and 26, above described, and which is pivotally connected to the lower flange 18, back of the same, by a pivot-pin 28 which is located near the outer lower corner of the carrier. This carrier is also formed with the holes 29 and 30, and is provided with the retaining-pin 31; said parts being similar to the holes 23 and 24 and pins 25 above described. This carrier displays the abbreviation "Mdse.," this inscription being either placed directly upon the carrier or upon a card which is suitably attached to said carrier.

At the left hand side of the rib 19 is located a fourth carrier 32 which in form, material, and manner of mounting, is similar to the carriers above described; said carrier being also secured pivotally to the flange 18, back of the same, by a pivot-pin 28, similar to the pin 28 of the carrier 27, and being also provided with the holes 29 and 30, and the removable pin 31, similarly as is the said carrier 27. This carrier 32 is also provided with any suitable inscription.

In order to facilitate the manipulation of the carriers above described, each of said carriers is formed or provided upon its outer margin with an eye or projection 33 which is to be grasped by the operator while raising or lowering the carrier.

Upon the front of the holder is secured, by the pins 22 and other similar attachments, as preferred, a plate 34 which may be either of wood or of metal, as preferred, and which is of oblong rectangular form. This plate is of a width corresponding to the width of the back or body portion 1, and is of such length as to extend from the under side of the flange 9 to the upper side of the bottom-piece 15 of the holder. The middle of the front surface of this plate 34 is sunken, so as to receive a route-card 35, to be presently fully explained, and said plate is immediately overlaid by the cover 12, when the latter is closed.

In order to readily discharge any dust or moisture which might possibly enter the holder, either in the form of dust, or cinders, or of rain or snow, respectively, the bottom-piece 15 of the holder is formed, midway of its length, with an opening 36 which permits such foreign substances to quickly run out of the holder before sufficient time has elapsed for them to injure either the holder or the cards therein.

From the above description it will be seen

that I have produced a card-holder which is simple, strong, durable and inexpensive in construction, and easy to manipulate, and which clearly displays the cards which are in use, and also effectively protects those which are not in use, and which also so carries the route card as to permit the same to be readily inspected while at the same time effectively protecting the route-card also.

10 Having thus described my invention, what I claim as new therein and desire to secure by Letters Patent, is:—

1. A holder for freight car cards, &c., comprising a suitable framework, a cover or face hinged to said framework and pendent therefrom, a route card mounted upon said framework immediately beneath the cover or face plate, and a number of pivotal inscription carrying plates mounted in said framework to the rear of the route card, and movable laterally outward from said framework, to display the inscription, and a number of suitably arranged holes provided in said inscription carrying plates and removable retaining pins adapted to engage one or the other of the holes in the inscription carrying plates, to support said

plates in their open or closed position, substantially as described.

2. A holder for freight-car cards, &c., comprising a frame-work of approximately oblong rectangular form having a top-piece and a bottom-piece, a pendent flange carried by the top-piece, a vertical and upwardly extending flange carried by the bottom-piece, a cover hinged to the top-piece, a vertical rib mounted upon the front of the back portion of the frame-work, a number of inscription carrying plates pivoted in the frame and movable outwardly therefrom, at opposite sides of the frame, and having projections on their outer margins a plate for carrying a route-card secured to the frame-work directly beneath the cover, and an opening for the escape of foreign substances formed through the bottom-piece of the holder, substantially as set forth.

In testimony whereof I affix my signature in the presence of two witnesses.

JOHN S. SMITH.

Witnesses:

BEN M. SHACKELFORD,
T. F. K. SMITH.