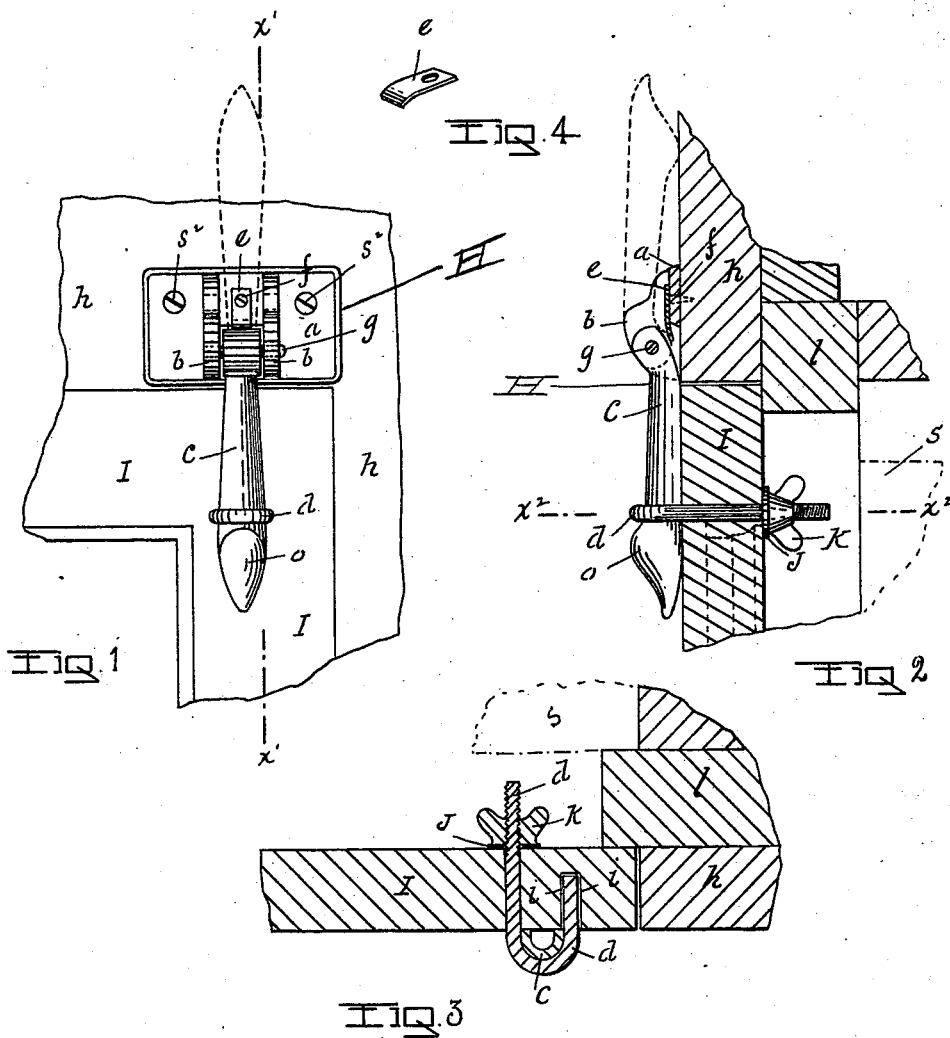


(No Model.)

A. HOWES.
AWNING BLIND HINGE.

No. 522,295.

Patented July 3, 1894.



WITNESSES
William A. Smet
John McDonald

INVENTOR
Alfred Howes
by
Faneell & Funder,
Attorneys

UNITED STATES PATENT OFFICE.

ALFRED HOWES, OF TROY, NEW YORK.

AWNING-BLIND HINGE.

SPECIFICATION forming part of Letters Patent No. 522,295, dated July 3, 1894.

Application filed December 28, 1893. Serial No. 494,964. (No model.)

To all whom it may concern:

Be it known that I, ALFRED HOWES, of Troy, county of Rensselaer, and State of New York, have invented an Improvement in Means for Hanging Storm-Sashes or Similar Structures, which I denominate Storm-Sash Hinges, of which the following is a full, clear, and exact specification.

My improvement relates to a device for hanging storm-sashes and outside blinds from within, so as to dispense with the use of any ladder or scaffolding outside; it being the object of my improvement to construct a hinge whereby when applied one person may hang a sash at any height without assistance.

My improvement consists—as will hereinafter be more fully detailed—in combining with an ordinary hinge a tongue-shaped shank secured by a half staple inserted in the stile of the storm sash and adjustably secured by a thumb-nut and washer.

The drawings accompanying the specification and forming a part thereof show the application of my invention.

In the drawings similar letters indicate corresponding parts in all views.

Figure 1 is a view of the hinge and staple adjusted when the storm-sash is in position. Fig. 2 is a longitudinal section of the hinge and staple being taken on the line $x'x'$ of Fig. 1. Fig. 3 is a longitudinal section of the staple d being taken on the line x^2x^2 of Fig. 2. Fig. 4 is a view of the spring e which controls the tongue-shaped shank c of the hinge.

The hinge, consisting of the head a and shank c , is made preferably of malleable iron. The head a is securely screwed to the exterior casing h by screws s^1s^1 Fig. 1. The tongue-shaped shank c is connected with the head, a , by means of a pin g inserted in the ears $b b$ Figs. 1 and 2. Through the side stile of the storm sash I, within two inches of the top end, is inserted a staple d with legs of unequal length, both of which are inserted from the outside. The shorter one is inserted in the stile of the storm sash I in the opening i , as shown at Fig. 3, and has freedom of play; the longer leg of the staple extends completely through the stile of the storm-sash I to the inside, where it is threaded and has attached a thumb-nut k and washer j by means of which the staple is loosened or fastened. Through this staple d the tongue-shaped shank c is inserted and held by the

knob o at the shank's end. The spring e Fig. 1, between the ears $b b$ of the head a of the hinge, controls the tongue-shaped shank c , which is an eccentric, and holds it up, as shown in Fig. 2 by the dotted outline, against the exterior casing h out of the way of the window blinds or awning when the storm sash is not in use. Otherwise the shank c would hang downward when the storm sash is removed and would be an obstacle to the closing of the usual window blinds or shutters. When there are no blinds or shutters used there is no need of the spring e except that general appearances would be improved by having the shank kept up close against the building instead of depending free from the window casing.

My improvement is applied as follows: The head a of the hinge is screwed to the casing h as above described. The staple d is inserted into the stile of the sash I. The lower sash of the window is raised and the storm sash lifted out and placed in position. The staple d being slackened, the shank c readily enters it, and catches at the knob o . The sash when in position is hooked at the bottom, then the upper sash of the window S Fig. 2 is lowered, and the shank c of the hinge is fastened and secured to the outside of the storm sash I by fastening the staple d by means of the thumb-nut k and washer j , Fig. 2, on the inside. After the storm-sash I is fastened to the shank c it may be unhooked at the bottom. The sash can now be opened and elevated to any degree at will. This does away with the necessity of having swing lights placed in the sash for the purpose of securing ventilation.

Having thus described my invention, what I claim, and desire to secure by Letters Patent, is—

The combination of the hinge made with the head a and tongue-shaped shank c having a knob o at its extremity, of the half-staple d , adapted to embrace and hold the said shank c and to be adjustably secured in the stile of a blind or sash, and means, consisting of a thumb-nut k and washer j , for securing and adjusting the same, substantially as shown and described.

ALFRED HOWES.

Witnesses:

ANTHONY P. FINDER,
JAMES FARRELL.