

(No Model.)

R. B. BERK.
SLATE CLEANER AND DRIER.

No. 524,158.

Patented Aug. 7, 1894.

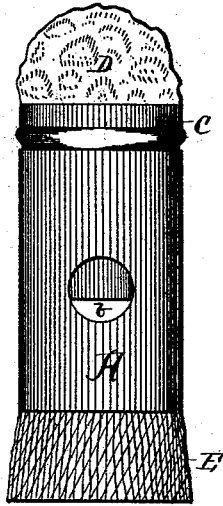


Fig. 1.

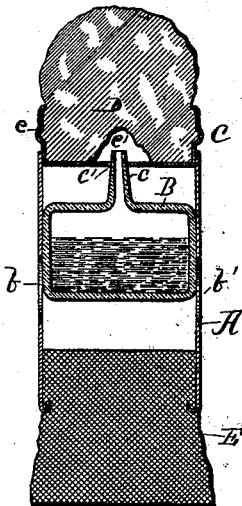


Fig. 2.

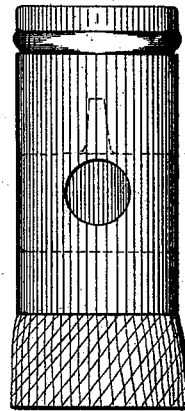


Fig. 3.

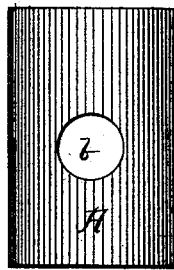


Fig. 4.

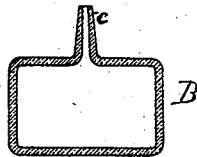


Fig. 5.

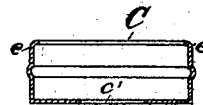
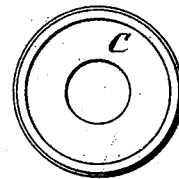
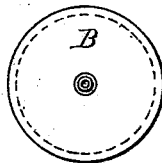
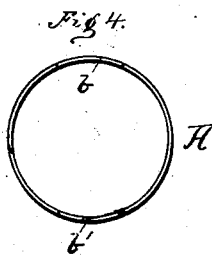


Fig. 6.



WITNESSES:
J. H. Jones
D. J. Smith

INVENTOR
Richard B. Berk.
BY
R. J. McLeary.
ATTORNEY.

UNITED STATES PATENT OFFICE.

RICHARD B. BERK, OF DAYTON, OHIO, ASSIGNOR OF ONE-HALF TO GUSTAV MODLER, OF SAME PLACE.

SLATE CLEANER AND DRIER.

SPECIFICATION forming part of Letters Patent No. 524,158, dated August 7, 1894.

Application filed June 4, 1894. Serial No. 513,485. (No model.)

To all whom it may concern:

Be it known that I, RICHARD B. BERK, of Dayton, county of Montgomery, State of Ohio, have invented a new and useful Improvement in Slate Cleansers and Driers; and I do declare the following to be a full, clear, and exact description of the invention, such as will enable others skilled in the art to which it appertains to make and use the same, reference being had to the accompanying drawings, and to the letters of reference marked thereon, which form a part of this specification.

My invention relates to new and useful improvements in slate cleansers and driers, the object of which is to provide a neat, convenient, and inexpensive device for school purposes.

A description of my invention is fully set forth in the following specification, and the specific points of novelty mentioned in the claims.

Referring to the annexed drawings forming a part of the specification, Figure 1 is a vertical elevation of my newly invented slate cleanser and drier. Fig. 2 is a vertical section of the same. Fig. 3 is a vertical elevation of the cleansing end inverted. Fig. 4 represents a side elevation, and a plan view, respectively, of the perforated tube or cylinder, the cleansing and drying adjuncts detached therefrom. Fig. 5 represents sectional and plan views of the water reservoir removed from the cylinder. Fig. 6 represents sectional and plan views of the sponge cup detached.

Similar letters of reference indicate corresponding parts throughout the different views.

A designates a hollow tube or cylinder that may be constructed of wood, metal or any suitable material; sheet metal, however, is thought preferable, and which may be nickel plated or otherwise ornamented; this cylinder is provided with perforations (b) (b') diametrically opposite to each other.

B represents a reservoir to contain water, and which is constructed of rubber, in cylindrical form having a spout (c) through which an outlet is afforded to the water; this reservoir is placed in the middle portion of the

cylinder, to expose the sides thereof to the fingers, through the perforations (b) (b') in the cylinder.

C designates a cup having a small opening (c') in the bottom thereof, and adapted to fit in one end of the cylinder, so that the spout (c) may project through the opening (c').

D designates absorbent material, preferably sponge, suitably secured in the cup C by having the crimped or beaded edges (e) of said cup provided with inwardly projecting teeth or serrations which penetrate the sponge sufficiently to effect a substantial engagement therewith. The inner portion of the sponge has a cavity (e') into which the spout (c) projects and discharges water when the fingers press the reservoir through the perforations (b) (b').

E represents the drying substance, consisting preferably of ordinary lamp wick, the inner ends of which are secured together by glue or any other suitable means, to form a compact bunch, which is secured in the cylinder substantially in the manner that the cleansing material is secured in the cup C. When the device is not in use, the cleansing or sponge end may be detached and inverted in the cylinder, as is shown in Fig. 3; the reservoir being easily shifted toward the drying end of the cylinder.

Having fully described my invention, I claim—

1. A slate cleanser and drier consisting of a cylinder open at both ends, and provided with perforations in its sides, in combination with a flexible reservoir inserted in said cylinder, adapted to contain water, and to be compressed through the perforations in the cylinder, absorbent material attached to one end of said cylinder adapted to receive water from the reservoir when the latter is compressed, and a drying substance attached to the other end of the cylinder, as and for the purposes specified.

2. In a slate cleanser and drier, the combination of the cylinder with ends open, and its sides provided with perforations, a flexible water reservoir having a spout, inclosed within and adapted to be compressed through the perforations in said cylinder, a detachable

cup inclosed by the cylinder, and having an opening through which the spout of the reservoir projects, absorbent material secured within said cup to receive moisture from the
5 reservoir, and drying material attached to the other end of the cylinder, as and for the purposes specified.

3. The herein described slate cleanser and drier, consisting of the cylinder A with perforations (b) (b'), the water reservoir B with

spout (c), the cup C with opening (c'), the absorbent D with cavity (e'), and the drier E, as herein described.

In testimony whereof I have hereunto set my hand this 13th day of March, 1894.

RICHARD B. BERK.

Witnesses:

R. J. MCCARTY,
J. D. CLARK.