

No. 646,600.

Patented Apr. 3, 1900.

T. W. GEARY.
LABEL HOLDER FOR RAILROAD CARS.

(Application filed Jan. 10, 1900.)

(No Model.)

FIG. 1.

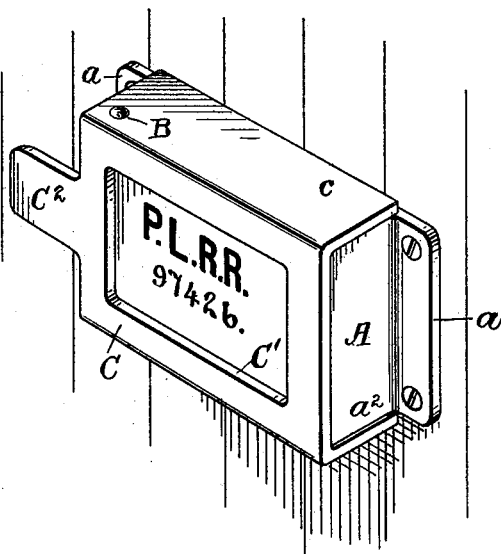


FIG. 2.

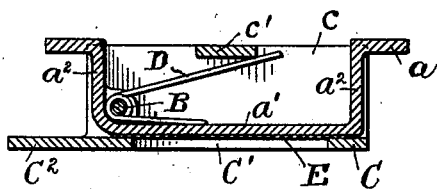


FIG. 3.

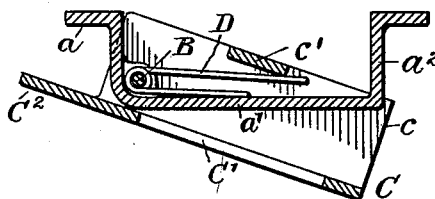


FIG. 4.

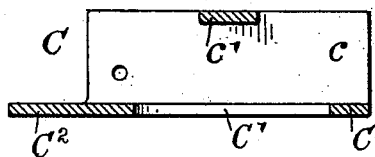


FIG. 5.

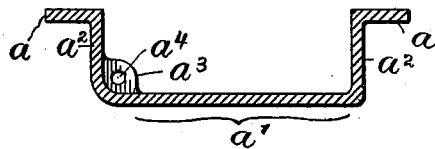
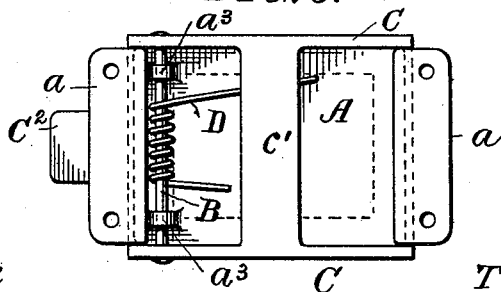


FIG. 6.



Witnesses:
Joseph Mellors
Wm. F. Donnelly

Inventor:
Thomas William Geary
by his Attorney
W. DeWitt Goodwin

UNITED STATES PATENT OFFICE.

THOMAS WILLIAM GEARY, OF PHILADELPHIA, PENNSYLVANIA.

LABEL-HOLDER FOR RAILROAD-CARS.

SPECIFICATION forming part of Letters Patent No. 646,600, dated April 3, 1900.

Application filed January 10, 1900. Serial No. 926. (No model.)

To all whom it may concern:

Be it known that I, THOMAS WILLIAM GEARY, a citizen of the United States, residing at Philadelphia, in the county of Philadelphia and State of Pennsylvania, have invented new and useful Improvements in Label-Holders for Railroad-Cars, of which the following is a specification.

My invention relates to improvements in holders for address cards or labels upon railroad-cars in which the card may be readily inserted or withdrawn; and the objects of my improvements are to provide a substantial means of securing the holder to the railroad-car, to construct a holder which may be conveniently opened, and to provide a holder which will prevent the card from being torn or destroyed.

In the accompanying drawings, Figure 1 is a perspective view of the card-holder attached to the door of a railroad-car; Fig. 2, a horizontal sectional view showing the card or tag clamped in the same; Fig. 3, a view similar to Fig. 2, showing the outer casing or cover opened and the card removed. Fig. 4 is a detached sectional view of the outer casing or cover. Fig. 5 is a detached sectional view of the bracket, and Fig. 6 is a rear view of the card-holder.

Referring to the drawings, A represents a bracket which is secured to the door of a freight-car or any other desired place by means of screws passing through holes in the projections *a*. The outer face *a'* of the bracket is raised by means of the side pieces *a²* sufficiently from the surface of the car-door to permit the cover to be operated. The bracket A is provided on its inner side with projections *a³*, having holes *a⁴*, through which passes a rod B, on which is pivoted the cover C. The cover C has an opening C' in its outer face, through which the card is visible. Said

cover has projecting side pieces *c*, which protect the card from the weather and form a suitable means for engaging the rod B, the ends of which project through the side pieces *c* and are bolted or riveted and tend to hold the cover C in its proper place. Said cover has a cross-bar *c'* extending between the side pieces *c*, against which presses one end of a spring D, carried by the rod B. The other end of said spring acts against the plate *a'* of the bracket A and tends to keep the cover tightly closed against said bracket, and thus securely clamp the card E between the same, as shown in Fig. 2.

A projection C² on the cover C is used as a handle, and in the operation of the device by pressing said handle the cover will turn upon the rod B and allow the opposite end of the cover to open sufficiently to permit the card to be inserted or removed.

Having thus described my invention, I claim and desire to secure by Letters Patent—

The combination, in a device for holding cards, of a herein-described bracket having a raised surface against which is clamped the card, a cover having side plates *c* adapted to swing horizontally on the rod B and clamp the card against said bracket, a handle C² on said cover, projections *a* for fastening said bracket to the car and a cross-bar *c'* carried by the cover which acts as a stop and against which a spring D presses tending to keep the cover closed tightly against the bracket A, substantially as described.

In testimony whereof I have affixed my signature in presence of two witnesses.

THOMAS WILLIAM GEARY.

Witnesses:

JOHN E. McCULLY,
HARRY F. FELTY.