

Fig.1.

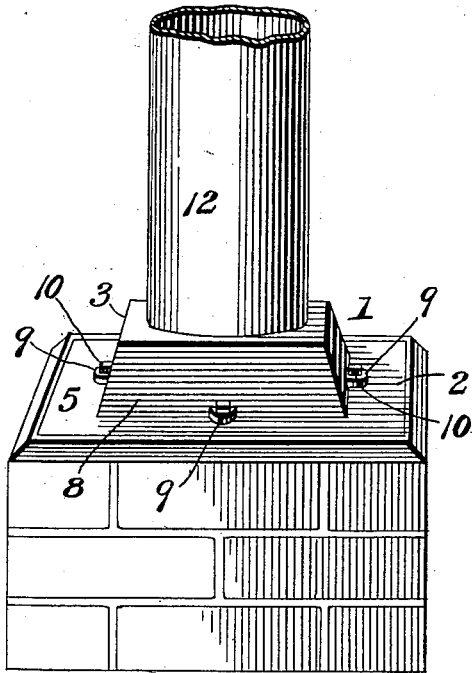


Fig.2.

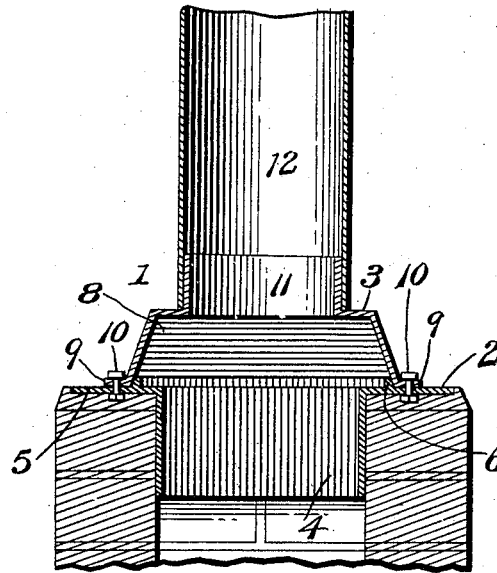


Fig.3.

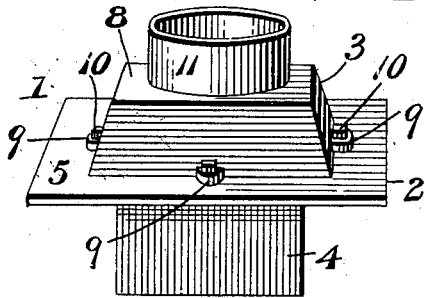
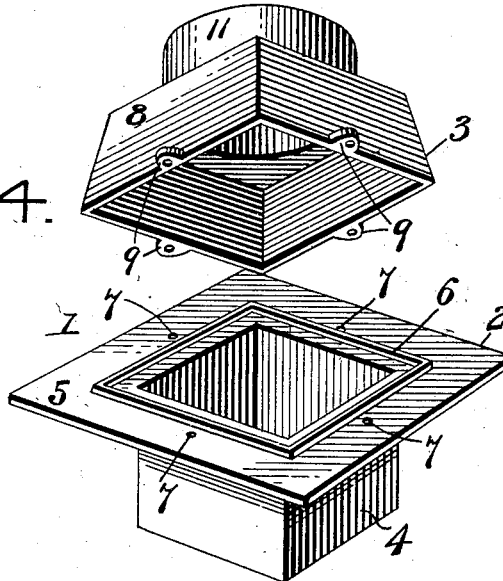


Fig.4.



Henry F. Schoppe Inventor

By *E. J. Siggers* Attorney

Witnesses  
Edwin G. McKee  
R. G. Foster.

# UNITED STATES PATENT OFFICE.

HENRY F. SCHOPPE, OF JEFFERSON, IOWA.

## CHIMNEY-CAP.

SPECIFICATION forming part of Letters Patent No. 650,026, dated May 22, 1900.

Application filed November 24, 1899. Serial No. 738,191. (No model.)

*To all whom it may concern:*

Be it known that I, HENRY F. SCHOPPE, a citizen of the United States, residing at Jefferson, in the county of Greene and State of Iowa, have invented a new and useful Chimney-Cap, of which the following is a specification.

My invention relates to improvements in chimney-caps; and one of its objects is to provide an efficient, durable, and inexpensive device of this class by means of which an extension-pipe may be easily and securely fastened to the top of a chimney.

A further and important object is to construct a cap that will protect the top of the chimney from the weather and prevent the same from cracking and falling apart.

These objects are attained by the construction shown in the drawings which form a part of this specification, and in which—

Figure 1 is a perspective view of a chimney, showing the improved cap applied thereto. Fig. 2 is a sectional view of the same. Fig. 3 is a perspective view of the cap. Fig. 4 is a perspective view of the two sections detached.

Similar reference-numerals refer to similar parts throughout the several views.

The numeral 1 designates my improved cap, which is composed of two detachable sections, the lower one being designated by the numeral 2 and the upper by the numeral 3. The lower section 2 is composed of an angular open-ended boxing 4, adapted to fit snugly in the flue-opening of the chimney, as shown in Fig. 2, and a horizontal angular supporting-flange 5, arranged at the upper end of the boxing and extending outwardly, being adapted to rest flat upon and substantially cover the top of the chimney. This flange 5 is provided upon its upper surface with the continuous upstanding retaining-rib 6 and is also perforated, as at 7, for the reception of bolts for fastening the upper section thereto. The upper section 3 is in the form of a hood and composed of a lower angular portion 8, the side walls of which are inclined and are provided at their lower edges with offstanding perforated lugs 9, the perforations of which are adapted to register with the perforations 7 in the lower section and receive the bolts 10, by which the two sections are securely fastened together. The upper portion of this section

3 is formed into the cylindrical upstanding collar 11, over which is fitted an ordinary extension-pipe 12. The two sections are adapted to be fastened closely together, the lower edge of the top section fitting snugly over and around the retaining-rib 6, as shown in Fig. 2, whereby the parts are held firmly in position, and a water-tight joint is formed. The flange 5 is set in a bed of mortar on the top of the chimney, whereby, in connection with the boxing 4, which fits tightly in the flue-opening, the cap is held securely in place. Each section is preferably cast in a single piece, thus making a comparatively-inexpensive construction.

By reference to Figs. 1, 2, and 3 of the drawings it will be noted that the upwardly and inwardly inclined walls 8 of the upper section 3 merge into a horizontal plate, from which extends a central pipe-collar 11; but there is a horizontal surface between the upper marginal edge of the section 3 and the exterior surface of this pipe-collar, said horizontal surface constituting a seat for the pipe-section 12. This upper section thus affords a means for the proper and secure support of the superposed pipe section or sections, while the pipe-collar prevents lateral displacement of the pipe-sections on the upper chimney-top section.

It will thus be seen that I have constructed a simple, durable, and inexpensive device by which an extension-pipe may be easily and securely fastened to the top of a chimney and which will protect the same from the effects of the weather. By removing the upper section access may be had to the entire opening of the chimney for the purpose of cleaning the same.

I do not wish to be limited to the exact proportion and size shown, as it will be understood that these must be varied for different-sized chimneys, and changes in the form and minor details of construction within the scope of the appended claim may be resorted to without departing from the principle or sacrificing any of the advantages of this invention.

Having now fully described my invention, what I claim as new, and desire to secure by Letters Patent, is—

A chimney-cap comprising an upper sec-

tion having the upwardly and inwardly inclined walls merging into a flat seat-surface and provided at its lower edge with perforated lugs and at the upper edge with a pipe-collar,  
5 a lower section formed with a cap-plate and a depending chimney-flange, said lower section furthermore provided with an upstanding rib located a short distance from the opening of the depending flange and adapted to fit  
10 within the lower open end of the upper section which rests on the cap-plate of the lower

section, and bolts fastening the upper and lower sections separably together by passing through the lugs and cap-plate of the respective sections, substantially as described. 15

In testimony that I claim the foregoing as my own I have hereto affixed my signature in the presence of two witnesses.

H. F. SCHOPPE.

Witnesses:

JOHN CERNEY,

S. TUNILL.