

No. 676,424.

Patented June 18, 1901.

S. I. DEPEW.
PAN.

(Application filed Oct. 18, 1900.)

(No Model.)

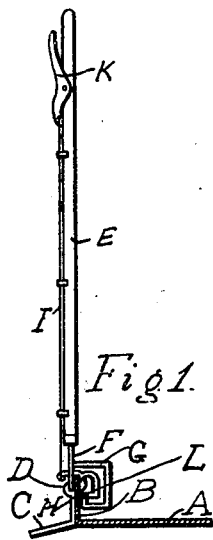


Fig. 1.

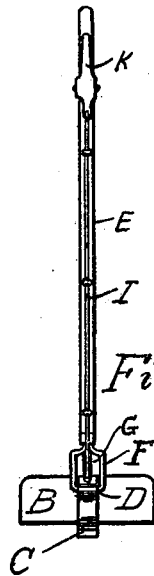


Fig. 2.

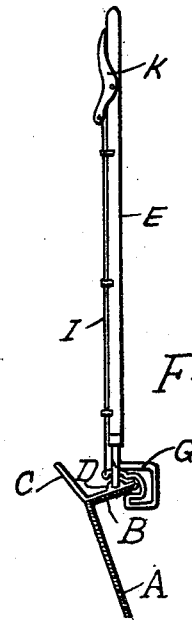


Fig. 3.

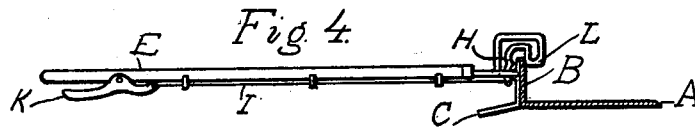


Fig. 4.

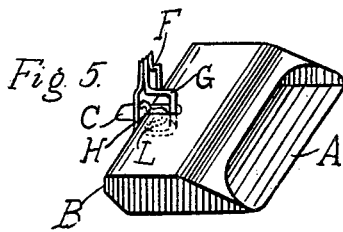


Fig. 5.

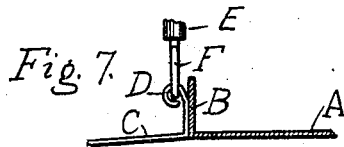


Fig. 7.

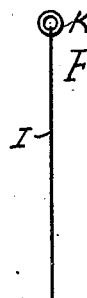


Fig. 6.

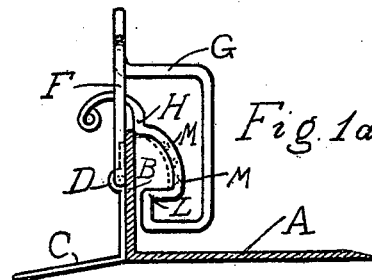


Fig. 1a.

Witnesses:
A. P. Kuppy.
Frank S. Fulton.

Inventor:
Strother I. Depew.
by Ludwig Gutmann
Attorney.

UNITED STATES PATENT OFFICE.

STROTHER I. DEPEW, OF PANA, ILLINOIS, ASSIGNOR OF ONE-HALF TO
BYRON E. CRONKHITE, OF ROSSVILLE, ILLINOIS.

PAN.

SPECIFICATION forming part of Letters Patent No. 676,424, dated June 18, 1901.

Application filed October 19, 1900. Serial No. 33,808. (No model.)

To all whom it may concern:

Be it known that I, STROTHER I. DEPEW, a citizen of the United States, residing at Pana, in the county of Christian and State of Illinois, have invented a new and useful Pan, of which the following is a specification.

My invention relates to improvements in pans, and in particular to dust-pans and similar house utensils or implements.

The object of my invention is to provide a cheap yet strong and serviceable utensil adapted to made the necessary work of sweeping less laborious and fatiguing.

My invention provides, further, such means as will prevent soiling one's dress and the inhaling of the dust which cannot be avoided when the person sweeping has to stoop for collecting the dust or rubbish.

To explain the nature of my invention more clearly reference may be had to the accompanying drawings, in which—

Figure 1 is a view in elevation and partly in section of my invention. Fig. 1^a shows the mechanism on an enlarged scale, some modifications being added which also form part of the invention. Fig. 2 is a side view of Fig. 1. Fig. 3 is a view in elevation of Fig. 1 in a released condition. Fig. 4 shows the pan with the stick in a horizontal position. Fig. 5 shows the preferred form of pan used, while Figs. 6 and 7 show modifications of details.

Referring in particular to Fig. 1, the drawing shows an open pan with the sides cut away for the purpose of more clearly exposing some of the important features of my device. My invention consists of a dust-pan A, provided with a back B, to which is attached the foot-rest C, extending in the opposite direction of pan A, in the form of a strip which forms an obtuse angle with the pan A. The other end of the strip C is rigidly attached to the back B of the pan, either by rivets, screws, or bolts. It also serves as a bearing-hinge D for movably supporting the pan-stick E. The lower extremity of this stick is provided, preferably, with a wire loop F for the sake of lightness, although malleable or other casting may be employed. This loop (see Fig. 2) is pivotally held in position under strip C at D.

From the same extremity extends a specially-shaped wire or metallic band G. Its extreme end H forms an elastic or spring catch, from which a string or wire I extends along the pan-stick E toward the upper end. The other end of wire I is attached to a controlling mechanism in the form of the bell-crank K, which is located at the handle of the pan-stick. The projection L is applied to provide a second stop or bearing for the pan when released and pan is used in a horizontal position, as shown in Fig. 4.

My invention is used in the following manner: The dust-pan is set on the floor for removing the accumulated dust heaped together in any convenient manner. Owing to the foot-rest C, which forms a small angle with the floor, the pan A rests on the floor only with the front edge, and this contact becomes firmer and surer when the weight of a person setting his foot on rest C holds the pan in position to enable him to sweep the dust on the pan. This is accomplished without stooping or bending over. Then the pan is carried with the handle in a vertical position to the place where the dust or rubbish is to be disposed of. By pressing lever K wire I raises the catch H, releasing the pan, which falls over into the position shown in Fig. 3. Owing to the inclined position of the pan the dust will readily fall out. If the pan is to be used in an elevated position, it may be more convenient to use it with the handle in a horizontal position. By pressing lever K the pan is released, as before, and when the pan-stick is brought into a horizontal position the step or projection L engages the back B of the pan, preventing the latter from turning further. To place the pan into the original position, as shown in Fig. 1, the pan may be placed on the floor while the stick is held in a vertical position, when the back B of the pan readily engages with catch H, or else it is but necessary to swing the pan sharply back when the stick is held in a vertical position to enable B to pass catch H.

Fig. 5 shows the preferred form of pan, which is of the covered form. The cover prevents the rising of the dust when it is swept on the pan. To enable the use of this type,

a slot or opening is provided through the cover to admit the setting mechanism.

Fig. 6 shows a modified controlling device in the form of a ring, which if pulled with a finger will raise the catch H.

Fig. 7 shows a modified strip C, which is provided with a curved end or hook instead of the bearing described in Fig. 1. This hook will form the bearing, however. The panstick and mechanism become detachable by this construction, while in the form described in Fig. 1 the attachment is of a permanent nature.

So far I have described my invention as having but two (2) defined positions—viz., those shown in Figs. 1 and 4. In the enlarged view in Fig. 1^a notches M are indicated by dotted lines, which are adapted to engage with the edge of B when the controlling device K is out of action. It will be clear, therefore, that this modified construction will enable me to place the pan at more than two (2) given angles to the handle, which may be adjusted to suit the occasion.

From the foregoing it will be clear that my invention is susceptible of numerous modifications fully within the scope of my invention. Therefore I do not wish to limit myself to the exact forms shown in the drawings; but

What I claim as my invention, and desire to secure by Letters Patent, is—

1. In a dust-pan the combination of a receptacle, a handle, a wire loop firmly attached to the lower extremity of said handle, a bearing pivotally supporting said wire loop and extending downwardly to form a foot-rest, a spring suitably shaped locking and holding said receptacle in a relatively-fixed position to said wire loop also attached to the lower extremity of said handle, a lever mounted near the upper extremity of said handle and means for actuating and releasing said spring by said lever.

2. In a covered adjustable pan the combination with a partly-closed receptacle, provided with a slot, of a handle, a hinge movably connecting said elements, a catch holding said receptacle approximately at right angles to said handle, provided with two or more projections adapted to engage successively said receptacle in different predetermined positions through said slot and means for applying tension to said catch, mechanically connected thereto, and supported on said handle.

In testimony that I claim the foregoing as my invention I have signed my name, in presence of two witnesses, this 17th day of October, 1900.

STROTHER I. DEPEW.

Witnesses:

A. P. GUPPY,
FRANK S. FULTON.