

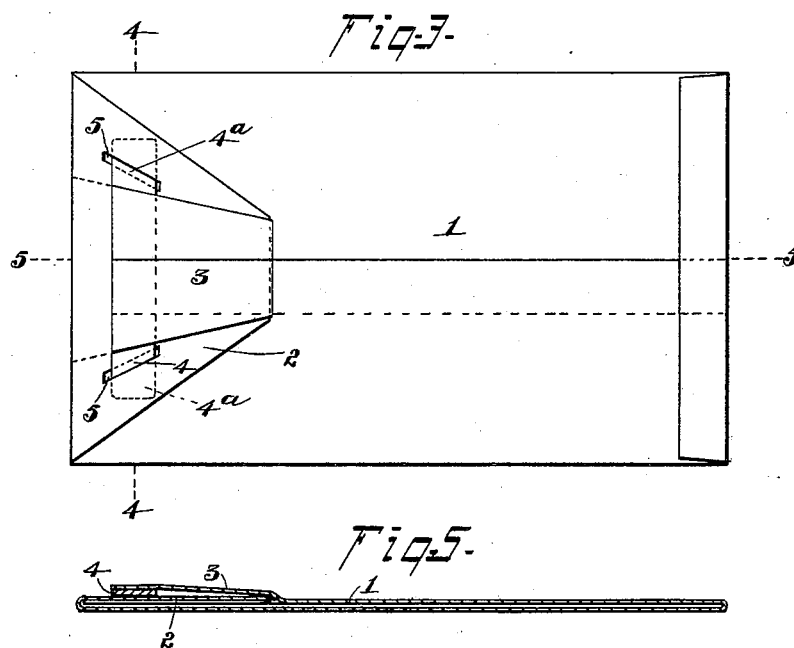
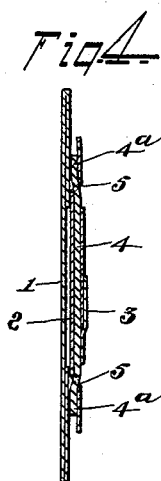
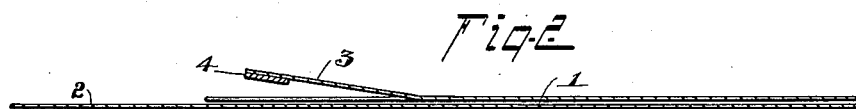
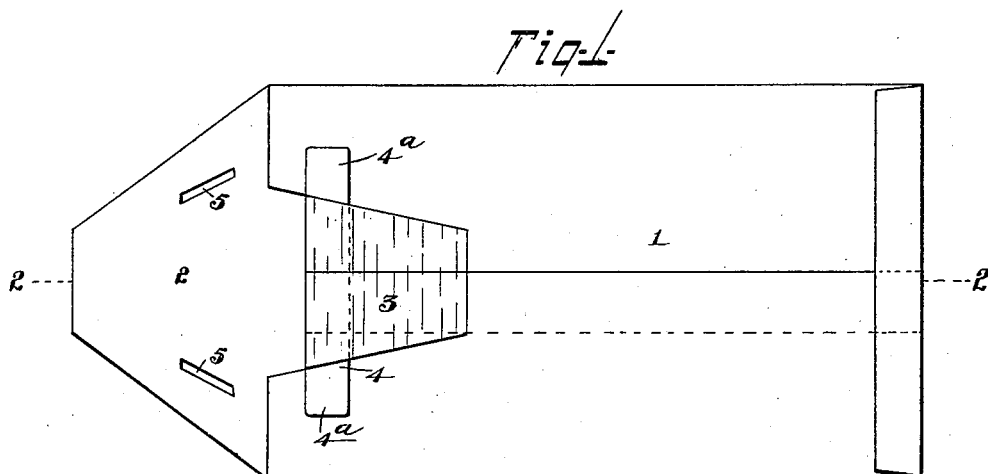
No. 676,515.

Patented June 18, 1901.

A. DE O. ROSSITER.
ENVELOP.

(Application filed June 15, 1900.)

(No Model.)



WITNESSES:

Walter C. Pusey.
By Weaver Lopez.

INVENTOR:

Alonzo De O. Rossiter
BY
Joshua Pusey,
ATTORNEY.

UNITED STATES PATENT OFFICE.

ALONZO DE O. ROSSITER, OF PHILADELPHIA, PENNSYLVANIA, ASSIGNOR OF
ONE-HALF TO WILLIAM H. BEECHER, OF SAME PLACE.

ENVELOP.

SPECIFICATION forming part of Letters Patent No. 676,515, dated June 18, 1901.

Application filed June 15, 1900. Serial No. 20,407. (No model.)

To all whom it may concern:

Be it known that I, ALONZO DE O. ROSSITER, a citizen of the United States, residing in the city and county of Philadelphia, in the State of Pennsylvania, have invented certain new and useful Improvements in Envelops, of which the following is a full, clear, and exact description, reference being had to the accompanying drawings, of which—

Figure 1 is a plan view of an envelop embodying my invention, the mouth thereof being open. Fig. 2 is a section as on line 2 2, Fig. 1. Fig. 3 is a view similar to Fig. 1, but showing the envelop closed ready for mailing. Fig. 4 is a section as on line 4 4, Fig. 3. Fig. 5 is a section as on line 5 5, Fig. 3.

This invention relates to that kind of envelops that are adapted more especially for inclosing catalogues, circulars, and the like to be sent through the mails unsealed.

The object of the invention is to provide such an envelop that may be cheaply made, readily closed and opened, and when closed not liable to open accidentally in transit.

To this end the invention consists of an envelop made of suitable paper, the usual closing-flap having suitable slots therein into which is adapted to be inserted the laterally-projecting ends of a strip of stiff paper, pasteboard, or the like, which is secured transversely to or may be integral with the free end of a tongue that is cut from or fastened to the body of the envelop, the relative position of the said strip and slots in the flap being such, as hereinafter described, that when the flap is folded over and the tongue brought over and upon the latter the said projecting ends of the strip may be inserted in the said slots.

Referring to the accompanying drawings, forming a part of this specification, and which represent a form of the invention which I have put into practical use, 1 is the body of the envelop, and 2 the usual flap, extending beyond and adapted to be folded over and upon the body.

In carrying out my improvement I cut from the side of the body 1 over and upon which the flap is to be folded a tongue 3 of suitable

shape—such, for example, as shown—the free end of which is adjacent to the mouth of the envelop and the other end connected to the body portion 1. Across the free end I secure by pasting or otherwise a stiffening-strip 4, of pasteboard or other suitable flexible material, whose ends 4^a extend beyond the sides of the tongue. I also cut in the flap 2, near the sides thereof, slots 5, adapted to receive the ends 4^a, respectively, of the strip 4, as hereinafter described, and when said ends are so engaged it will be seen that the tongue 3 and flap 2 are securely held together.

In using the envelop the article to be sent having been inserted in the mouth of the envelop the tongue 3 is then raised up and flap 2 is folded over upon the body of the envelop. The tongue is now brought over and upon the flap, and the ends 4^a of the said strip are inserted in the slots 5, beyond which they project laterally, as clearly seen in Figs. 3 and 4.

It will be obvious that the flap will be securely held by the strip 4, yet permitting the envelop to be easily and quickly opened by simply bending outward the strip 4 to cause the ends 4^a to be withdrawn from the slots 5.

It will be observed that in the particular form of the invention shown (which is the preferred form) the tongue 3 is cut out from the body of the envelop and connected thereto only along the margin farthest from the mouth of the envelop. There is an advantage in this construction, in addition to economy of manufacture, in that the side of a catalogue or the like within the envelop is exposed when the latter is opened, and it (the catalogue) may be readily grasped by the hand in order to extract it from the envelop.

I remark that if suitable stiff paper be used the separate attached strip 4 may be dispensed with and the projections 4^a be integral with the tongue.

Having thus described my invention, I claim as new and desire to secure by Letters Patent—

1. In an envelop, the combination with the body portion, of a closing-flap carried thereby and provided with slots, a tongue hinged to said body portion and overlapping said

flap when the latter is closed, and a stiffening-strip carried by said tongue and having its ends projecting beyond the edges of the tongue, said ends being engaged with the slots of the closing-flap when the latter is folded upon the body portion.

2. In an envelop, the combination with the body portion having one of its sides cut on longitudinal lines to form a tongue, and to provide a space at said side for exposing to view the contents of the envelop when said tongue is opened, of a closing-flap carried by said body portion and adapted to be overlapped by said tongue when folded upon the body portion, and means for locking together said tongue and flap when the latter is closed upon the body portion.

3. In an envelop, the combination with the body portion having one of its sides cut on longitudinal lines to form a tongue, and to provide a space at said side for exposing to view the contents of the envelop when said tongue is opened, of a closing-flap carried by said body portion and adapted to be overlapped by said tongue when folded upon the body portion, said flap being provided with

slots, and projections carried by said tongue and adapted to engage said slots when the flap is closed.

4. In an envelop, the combination with the body portion having one of its sides cut on longitudinal lines to form a tongue, and to provide a space at said side for exposing to view the contents of the envelop when said tongue is opened, of a closing-flap carried by said body portion and adapted to be overlapped by said tongue when folded upon the body portion, said flap being provided with slots, and a stiffening-strip carried by said tongue and having its ends projecting beyond the edges of the tongue, said ends being engaged with the slots of the closing-flap when the latter is folded upon the body portion.

In testimony whereof I have hereunto affixed my signature this 7th day of June, A. D. 1900.

ALONZO DE O. ROSSITER.

Witnesses:

WALTER C. PUSEY,
JOSHUA PUSEY.