

No. 676,690.

T. DE Q. RICHARDSON.  
WAIST HOLDER.

Patented June 18, 1901.

(No Model.)

(Application filed Mar. 14, 1901.)

3 Sheets—Sheet 1.

FIG. 1.

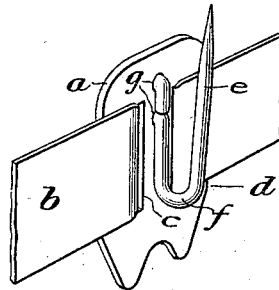


FIG. 2.

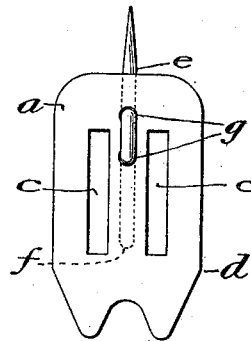
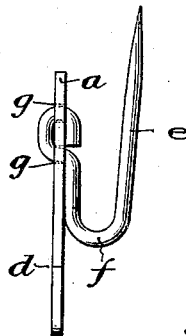


FIG. 3.



Thomas De Q. Richardson

WITNESSES:

Arthur E. Paige  
H. Norman Dixon

INVENTOR:

by his attorney  
W. C. Mowbray

No. 676,690.

Patented June 18, 1901.

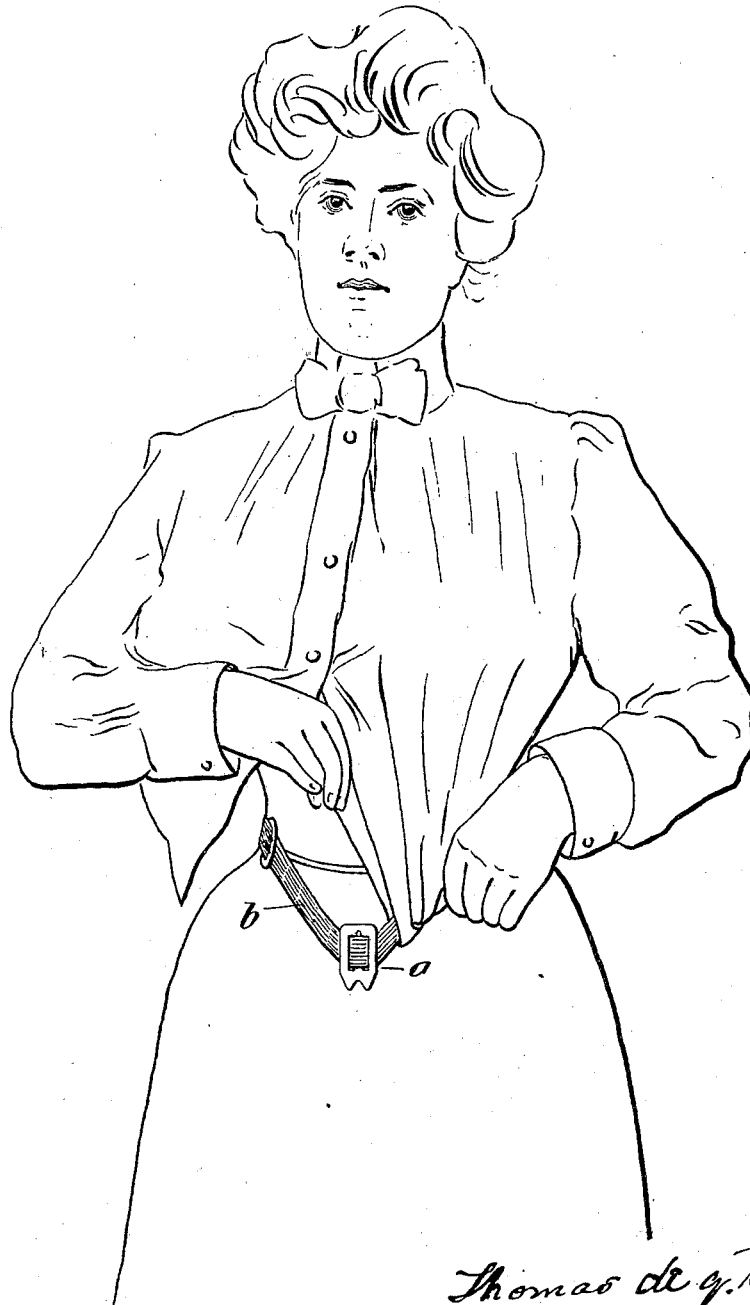
T. DE Q. RICHARDSON.  
WAIST HOLDER.

(Application filed Mar. 14, 1901.)

(No Model.)

3 Sheets—Sheet 2.

FIG. 4.



WITNESSES:

*Arthur E. Paigey*  
*J. Norman Dixon*

*Thomas de Q. Richardson*

INVENTOR:

*by his attorney*  
*Wm. C. Townsend*

No. 676,690.

Patented June 18, 1901.

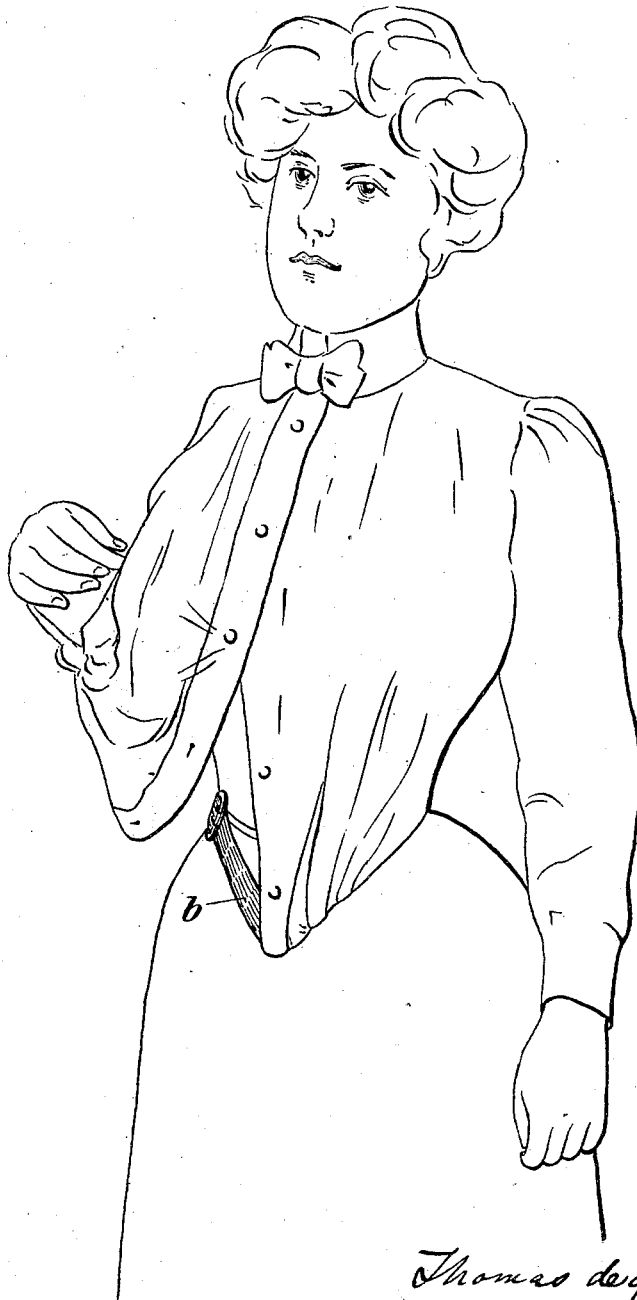
T. DE Q. RICHARDSON.  
WAIST HOLDER.

(Application filed Mar. 14, 1901.)

(No Model.)

3 Sheets—Sheet 3.

FIG. 5.



WITNESSES:  
*Arthur E. Paige*  
*J. Norman Dixon*

*Thomas de Q. Richardson*  
INVENTOR:  
*by his attorney*  
*W. C. Hawridge,*

# UNITED STATES PATENT OFFICE.

THOMAS DE QUARTEL RICHARDSON, OF PHILADELPHIA, PENNSYLVANIA.

## WAIST-HOLDER.

SPECIFICATION forming part of Letters Patent No. 676,690, dated June 18, 1901.

Application filed March 14, 1901. Serial No. 51,065. (No model.)

*To all whom it may concern:*

Be it known that I, THOMAS DE QUARTEL RICHARDSON, a citizen of the United States, residing in the city and county of Philadelphia, in the State of Pennsylvania, have invented certain new and useful Improvements in Garment-Holders, of which the following is a specification.

My invention refers to devices having related employments but primarily employed for holding in position waists formed of light materials, and without such inherent stiffness as to assume and maintain unassisted the set or adjustment required.

Usually a belt occupies upon the wearer an invariable position, approximately horizontal, and determined by the physique and garments of the wearer, and the attachment of a waist to it is only satisfactory when it is desired that the waist shall terminate as to its lower edge at such belt.

It is frequently desired that a waist shall be of such set or adjustment that the lower front portion shall have an extension depending below the waist or belt line and of V-shaped outline, but heretofore no means of a satisfactory character have been provided by which such depending extension of the front of the garment could be arranged and maintained in such form, or regulated as to proportions at the will of the wearer.

It is the object of my invention to provide simple, inexpensive, and easily applied means by which a shirt or other waist of suitable length may as to its lower front portion be arranged or set and securely maintained in such manner that its exposed edge describes the V-shaped figure required, without regard to the belt or waist line, of the wearer, such figure, moreover, being variable as to area and disposition according to the fancy of the wearer.

Generally stated, my invention comprehends the employment of a pliable tape or band adapted to be supported in suitable relation to the desired exposed edge line of the waist, and termed a defining band, inasmuch as when the lower portion of the waist is as shown in those figures of the drawings which illustrate one of several possible applications

or methods of using my device and as herein described, folded over said band and the up-turned edges concealed from view, the exposed edge of the waist follows the line of said band,—and further comprehends means for attaching that portion of the band which passes across the front of the wearer firmly to the skirt at any desired point below the waist line or belt line, such means, which are in the employment herein particularly described inclosed by the inwardly and upwardly turned ends of the garment, being adapted to engage such garment and to define the salient point of the V-shaped outline thereof.

In the accompanying drawings I show, and herein I describe, a good form of a convenient embodiment of my invention, the particular subject-matter claimed as novel being hereinafter definitely specified.

In the drawings I show my device in its preferred embodiment and also illustrate one useful method of employing it.

In the accompanying drawings,

Figure 1 is a view in perspective of the anchoring device and the associated band.

Figure 2 is a view in front elevation, and Figure 3 a view in edge elevation, of the anchoring device.

Figures 4 and 5 are views which illustrate a practical application of my device.

Similar letters of reference indicate corresponding parts.

In the accompanying drawings,

*a* is the plate or body of metal provided with means for engaging a defining band *b*, such as a piece of light leather or tape or kindred fabric adapted to encircle the wearer, and the front portion of which band is pliable, the precise degree of pliability of the band being, however, unimportant so long as a band employed is adapted with the other devices employed to effectuate the object of the invention in the manner described.

As a means for engaging said band I provide the plate with the band slots *c*, through which the band passes.

The plate is provided with means adapted, in the employment of my device which is illustrated in Figures 4 and 5, to engage the waist, such means in the embodiment of my

invention illustrated, consisting of an edge projection *d* conveniently formed with two depending teeth as shown.

Attached to the plate is an upwardly extending prong *e* offset from its body.

As a means for attaching said prong, I find it convenient to form it as the outer leg of a U-shaped loop of wire *f*, the inner leg of which engages with the body of the plate by passing through the two openings *g* formed therein, as particularly shown in Figure 3.

The body of the prong, in the preferred embodiment, exists in parallelism with the body of the plate, so that when engaged in the skirt or kindred garment of the wearer it holds said plate flatwise against the same.

When employed in the manner hereinafter described, to which employment my device is not, of course, restricted, being adapted for application in various manners in connection with waists and skirts in the vicinity of the waist line, the prong penetrates the skirt above the lower edge line of the corset, with the result that the corset steel protects the person from possibility of injury by it.

The illustrated use of the device will be readily understood.

The defining band preferably passes about the person of the wearer, and it may be, as to the rear and side portions, disposed of in any desired manner with respect to the garments of the wearer; its front portion, however, passes beneath the front portion of the waist. The band, which passes about the body of the wearer, obviously may completely encircle or only partly encircle the same; when, therefore, in the claims I speak of the body encircling band, it is to be understood that the expression covers not only a band which entirely encircles the body but also such a band as by passing across the front of said body but partly encircles it.

The plate *a* with its described parts, which as a whole I term the anchor, being mounted on the band, is secured to the front portion of the skirt at the desired elevation by engaging its upwardly projecting prong in the skirt and drawing the device upward until the body of the prong is wholly within the skirt, whereupon said anchor will be firmly secured in position to resist any upward strain of the waist and defining band, and at the same time be capable of instant removal.

The set of the anchor in the skirt determines the set of the defining band, and the said anchor will, of course, be located in the skirt with a view to the desired ultimate set of the waist.

When the anchor and band are in position, the lower extension of one of the front side portions of the waist, for instance, the left hand portion, is turned in beneath the band, as shown in Figure 4, its intumed end being drawn upward to take up as much of the fullness of the front of the body of the waist as may be desired, and the portion of the waist immediately in contact with the band is ma-

nipulated or adjusted by the wearer along said band, to the end that vertically extending creases or plaits in the fabric of the waist shall be uniformly distributed as to size and lateral succession,—and the vertical edge or flap of said front side portion of the waist is carried over to the farther or right side of the anchor and engaged over and beneath its downward projection, and also if desired beneath the right hand edge thereof, the free lower end of said vertical edge or flap remaining, of course, on the left hand side of said anchor.

From the engagement of said vertical edge or flap upon the right hand and lower edges of the anchor, while the intumed free end of said vertical edge or flap remains on the left hand side of the same, it results that the waist takes a strong hold upon and will in turn be securely held by said anchor.

The operation described with relation to the left hand front portion of the waist is repeated with the right hand front portion, said right hand portion similarly engaging with the anchor but outside of or through the left hand portion.

I do not confine myself to the depending projection, lip, or teeth, *d d*, shown, as it is evident that I may employ a plate or body of any form adapted for the purpose.

Having thus described my invention, I claim—

1. A garment holder consisting of an anchor body provided with a cloth-puncturing anchor-supporting prong or pin, and a pliable body encircling band engaged therewith, said band and anchor being adapted to be applied by the anchor prong at any desired point of the front portion of a garment of the wearer, the body of said anchor having means, independent of the prong, adapted to engage a garment, substantially as set forth.

2. A garment holder consisting of an anchor body provided with a cloth-puncturing anchor-supporting prong or pin, and a pliable body encircling band engaged therewith, said band and anchor being arranged to be applied by the anchor prong at any desired point of the front portion of a garment of the wearer, said anchor having a depending projection adapted to engage a garment, substantially as set forth.

3. A garment holder adapted for employment in connection with skirts and waists, consisting of an anchor body provided with an upwardly-projecting cloth-puncturing anchor-supporting prong or pin, and a pliable band engaged therewith, said band being adapted to be applied by the anchor prong at any desired point of the front portion of a garment of the wearer, and said anchor having a depending projection adapted to engage a garment, substantially as set forth.

4. In combination, a pliable defining band, an anchor engaged with said band and having a body with a garment engaging projection and an offset upwardly projecting an-

chor-supporting prong, substantially as set forth.

5. As a means for adjusting the lower portion of a waist to and securing it in a position in which its exposed edge describes an arbitrary fanciful line independent of the waist line and variable at the will of the wearer, in combination, a pliable defining band adapted to extend across the front of the person of the wearer beneath such waist and inwardly about which the free lower portion of the waist may be turned, and an anchor engaged with said band and having an offset upwardly extending prong, adapted to penetrate and positively engage with the skirt of the wearer at the desired point, and having also a body with an edge projection over which the overlapping front edges or flaps of the waist may engage and which defines the salient point of the edge line, substantially as set forth.

6. As a means for adjusting the lower portion of a waist to and securing it in, a position in which its exposed edge describes an arbitrary fanciful line independent of the waist line and variable at the will of the

wearer, in combination, a pliable defining band adapted to extend across the front of the person of the wearer beneath such waist and inwardly about which the free lower portion of the waist may be turned, and an anchor engaged with said band and having a prong, adapted to penetrate and positively engage with the skirt of the wearer at the desired point, and having also means for engaging and securing the lower front portion of the waist at the salient point of the exposed edge line, substantially as set forth.

7. The anchor plate herein described having an offset upwardly projecting prong or pin arranged at its back, the band slots, and the two depending teeth at its lower edge, substantially as set forth.

In testimony that I claim the foregoing as my invention I have hereunto signed my name this 6th day of March, A. D. 1901.

THOMAS DE QUARTEL RICHARDSON.

In presence of—

S. SALOME BROOKE,

THOS. K. LANCASTER.