

No. 676,878.

Patented June 25, 1901.

O. J. DICKEY.  
EXTENSION TABLE.

(Application filed July 9, 1900.)

(No Model.)

Fig. 2.

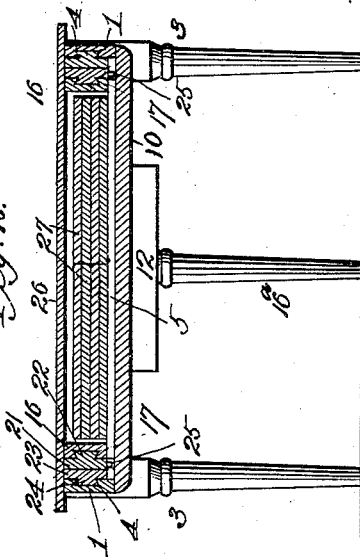


Fig. 1.

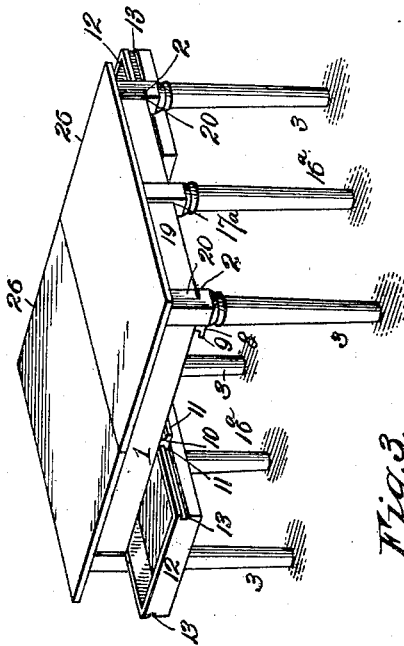


Fig. 5.



Fig. 4.

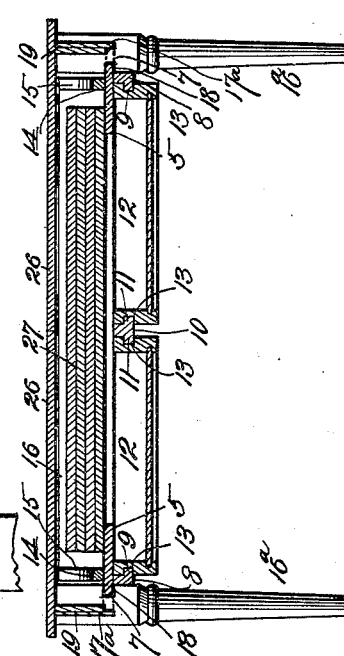
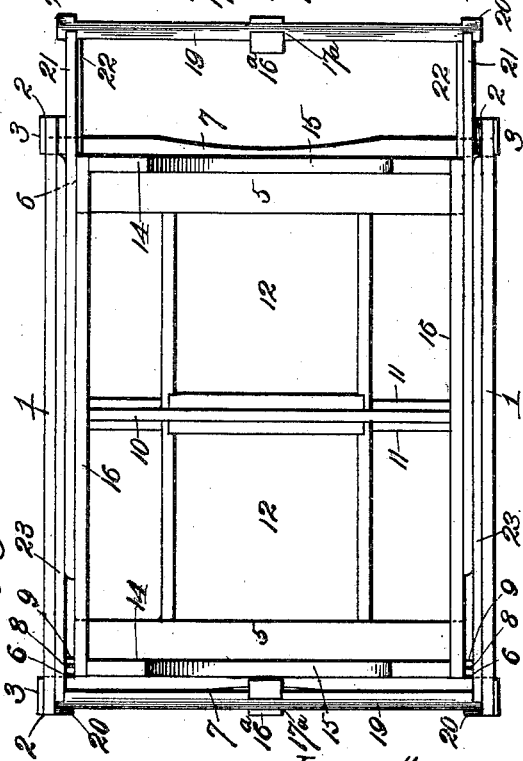


Fig. 3.



Witnesses:  
Charles F. Wilcox.  
H. C. Rodgers.

Inventor,  
O. J. Dickey,  
By Fischer & Chorp, Attys.

# UNITED STATES PATENT OFFICE.

OLIVER J. DICKEY, OF INDEPENDENCE, MISSOURI.

## EXTENSION-TABLE.

SPECIFICATION forming part of Letters Patent No. 676,878, dated June 25, 1901.

Application filed July 9, 1900. Serial No. 23,029. (No model.)

*To all whom it may concern:*

Be it known that I, OLIVER J. DICKEY, a citizen of the United States, residing at Independence, Jackson county, in the State of Missouri, have invented a new and useful Extension-Table, of which the following is a specification.

My invention relates to that class of extension-tables provided with a chamber wherein the leaves are stored when not in use; and my object is to produce a device of this character which is of ornamental appearance, easily extended or contracted, and of simple, strong, durable, and cheap construction.

With this object in view the invention consists in certain novel and peculiar features of construction and combinations of parts, as hereinafter described and claimed, and in order that the invention may be fully understood reference is to be had to the accompanying drawings, in which—

Figure 1 is a perspective view of an extension-table embodying my invention. Fig. 2 is a central cross-section of the same. Fig. 3 is a top plan view of the table with the top and leaves omitted and with one end or section slightly withdrawn. Fig. 4 is a central longitudinal section. Fig. 5 is a detail plan view of one end of one of a pair of cross-bars hereinafter referred to.

In the said drawings, 1 1 designate parallel side rails of the table, the same being secured at their ends in right-angle recesses 2 in the upper ends of the corner-legs 3, and said rails are provided at their inner sides with dovetail grooves 4.

5 5 designate horizontal cross-bars at opposite ends of the table and secured to the corner-legs 3 and in the recesses 2 thereof, and said cross-bars 5 are cut away at their outer ends and inner sides, so as to produce notches 6, which provide for a longer movement of the sliding or end sections of the table, and said cross-bars are dished in their outer edges, as at 7, for a purpose which hereinafter appears.

Cross-bars 8, provided with inwardly-projecting parallel flanges 9, which constitute cleats, are secured to the under side of cross-bars 5 at the inner side of the corner-legs, their ends being preferably flush with the outer side of the rails 1, and midway between

and parallel with said cleats is a double cleat secured at its opposite ends to the lower edges of rails 1, said cleat consisting of the bar 10, with outwardly-projecting flanges 11, which flanges, in conjunction with flanges 9, form a support for sliding drawers 12, having grooves 13 engaging said flanges. These drawers may be withdrawn from under the table from either side, thereby permitting the table to be located against a wall or other point with the drawers always accessible.

14 designates the end rails for the body portion of the table, which rails are dished or provided with recesses 15 in their upper edges for convenience in placing the table-sections, hereinafter referred, to in or removing them from their storage position. Rails 14 are mounted on cross-bars 5 above cleats 8 and terminating short of the said rails 1 are connected with each other by the inner side rails 16, secured to the cross-bars 5 and arranged parallel with rails 1, and they are provided in their outer faces with dovetail grooves 17. (See Fig. 2.)

16<sup>a</sup> designates the end legs of the table, said legs standing midway between the corner-legs when the table is arranged as shown in Fig. 1. The upper ends of said legs are provided with vertical notches 17<sup>a</sup> and horizontal notches 18, the end rails 19 of the movable sections being secured rigidly in notches 17<sup>a</sup>, with their upper edges in the same plane as the top of the legs and the rails 1 and 16 and the cross-bars 5 projecting into notches 18 in order that legs 16<sup>a</sup> may be brought sufficiently near together to stand in line with the contiguous corner-legs, as shown clearly in Figs. 1 and 3.

As it is necessary for the outer faces of the rails 19 to lie inward of the corresponding faces of the corner-legs in order to bring the end legs 16<sup>a</sup> in line with the corner-legs, there will be recesses in the outer face and inner corner of each corner-leg. This being undesirable, the end rails 19 are provided at their outer sides with the blocks or enlargements 20, which completely fill said recesses, and therefore lie flush with the corresponding faces of the corner-legs, as shown clearly in Figs. 1 and 3.

Projecting inwardly from the end rails 19 are the sliding rails 21 and 23, parallel with

each other and with rails 1 and 16 and fitting between said stationary rails, rails 21 being provided at their inner sides with dovetail tongues 22, engaging dovetail grooves 17, and rails 23, with dovetail tongues 24, engaging grooves 4 of the rails 1, said rails 21 and 23 being provided at their free or unconnected ends with depending pins 25, which are adapted to strike against the inner edges of the notched ends 6 of cross-bars 5 to limit the extensible movement of the table, as will be readily understood.

The table-top proper comprises the top-sections 26, secured rigidly upon rails 19, 27 designating a plurality of leaves, one or more of which are adapted as the ends or sections are drawn apart to be fitted between the top-sections 26 in the customary manner. When not in use, the leaves are placed together and rest upon the cross-bars 5 between rails 14 and 16 and in the storage-compartment below the top-sections 26, the dishing of or recesses in the upper edge of cross-rails 14 permitting the operator to handle the leaves fitting snugly in place without inconvenience.

The dishing of the outer edges of the cross-bars 5 at points 7 permits the operator to pass his fingers under the end rail 19 near the center leg 16<sup>a</sup>, so that the movable section can be drawn outward from the body, as indicated in Fig. 3. When both such sections are drawn out, and with them the top-sections 26, it will be clear that the storage-compartment will be open at its top and the leaves 27 therein can be readily removed. These leaves normally lie longitudinally of the table; but when taken from the storage-compartment they are turned so as to lie across the table and put in position, after which the end sections are pressed toward each other to close all cracks in the top in the usual manner. The tops of the drawers 12 are therefore never open, for they are hidden by the leaves 27

when in their storage-compartment, as well as by the same leaves when in place in the dished table.

From the above description it will be apparent that I have produced an extension-table which embodies the features of advantage enumerated as desirable in the statement of invention.

Having thus described the invention, what I claim as new, and desire to secure by Letters Patent, is—

1. An extension-table having a body portion comprising side rails and end rails all fixedly united with the corner-legs, horizontal cross-bars secured beneath said end rails and cut away at their ends on their inner sides for the purpose set forth, inner side rails sliding inside the fixed side rails and connected in pairs by movable end rails, and pins on the sliding side rails engaging said cut-away portions of the cross-bars.

2. An extension-table having a body portion comprising side rails and narrow end rails all fixedly united with the corner-legs, the end rails being dished in their upper edges for the purpose set forth, wide horizontal cross-bars standing beneath said end rails and cut away at their ends on their inner sides for the purpose set forth, said cross-bars being also dished in their outer edges, sliding side rails, movable end rails connecting the side rails in pairs and standing over the dished portions of said end bars when the movable sections are housed, pins on the sliding side rails engaging said cut-away portions of the cross-bars, and the top-sections and leaves.

In testimony whereof I affix my signature 80 in the presence of two witnesses.

OLIVER J. DICKEY.

Witnesses:

H. C. RODGERS,  
G. Y. THORPE.