

go to more projects
ADAPTIVE REUSE
EDUCATIONAL & CULTURAL
RESIDENTIAL
COMMERCIAL
PLANNING
LANDSCAPE
INTERIORS

NATSIOS YOUNG
ARCHITECTS

SELECTED PROJECTS

1969-2002

251 West 89th Street
New York NY 10024

T: 212 873-8700

F: 212 787-6102

E: {dn, jy} @ jya.com

ADAPTIVE REUSE

GREAT FALLS HISTORIC DISTRICT 1969-73

Paterson, NJ

- 1 ●
- 2 ●
- 3 ●
- 4 ●

MODEL CITIES HOUSING 1970

Paterson, NJ



HARLEM RESTORATION PROJECT 1990

New York, NY



GREAT FALLS HISTORIC DISTRICT

Natsios Young Architects

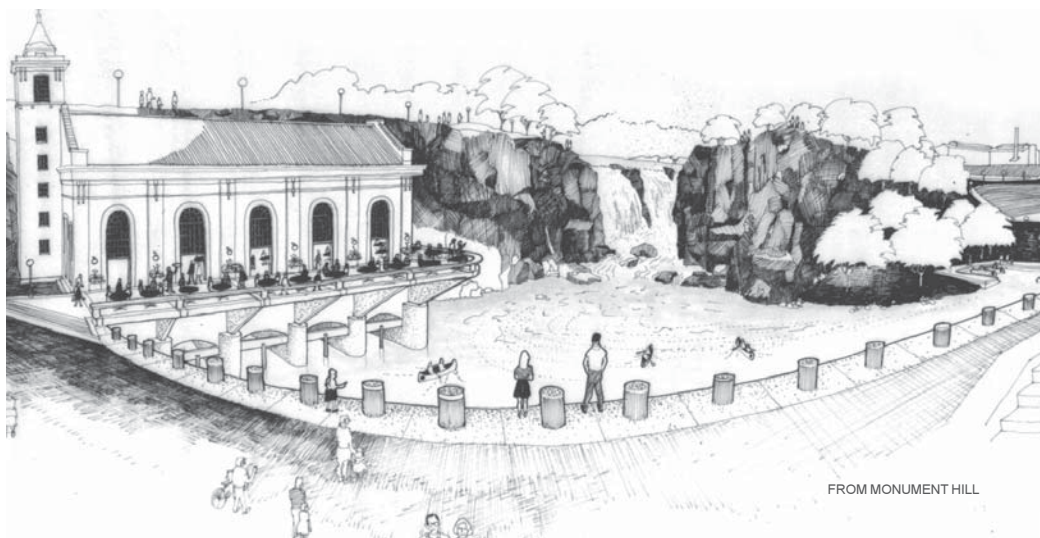
1969-73
Great Falls Committee
Paterson NJ

- Creation of 90-acre historic district with fifty 1820-1910 industrial buildings water-power systems parks.
- Schematic design for alternative re-uses.
- Survey, historical research, documentation.
- Federal application for historic district.
- Brochures and articles for publicity and funds.

"The factories are still there, too, dating from the 1820's to the 1920's, begun under the sponsorship of Alexander Hamilton in 1792, as the Society for Establishing Useful Manufacture with the aim of making Paterson a model nation manufactory..."

*"A group of young architects who have formed a non-profit, public service organization called **Urban Deadline**, headed by a recent Columbia Architecture School graduate, **John Young**, has taken on the "advocacy" role of making rehabilitation studies for the city of Paterson...They have given city officials the professional surveys and proposals necessary to make a Great Falls project more than wishful talk."*

Ada Louise Huxtable, The New York Times, 9 May 1971



GREAT FALLS HISTORIC DISTRICT

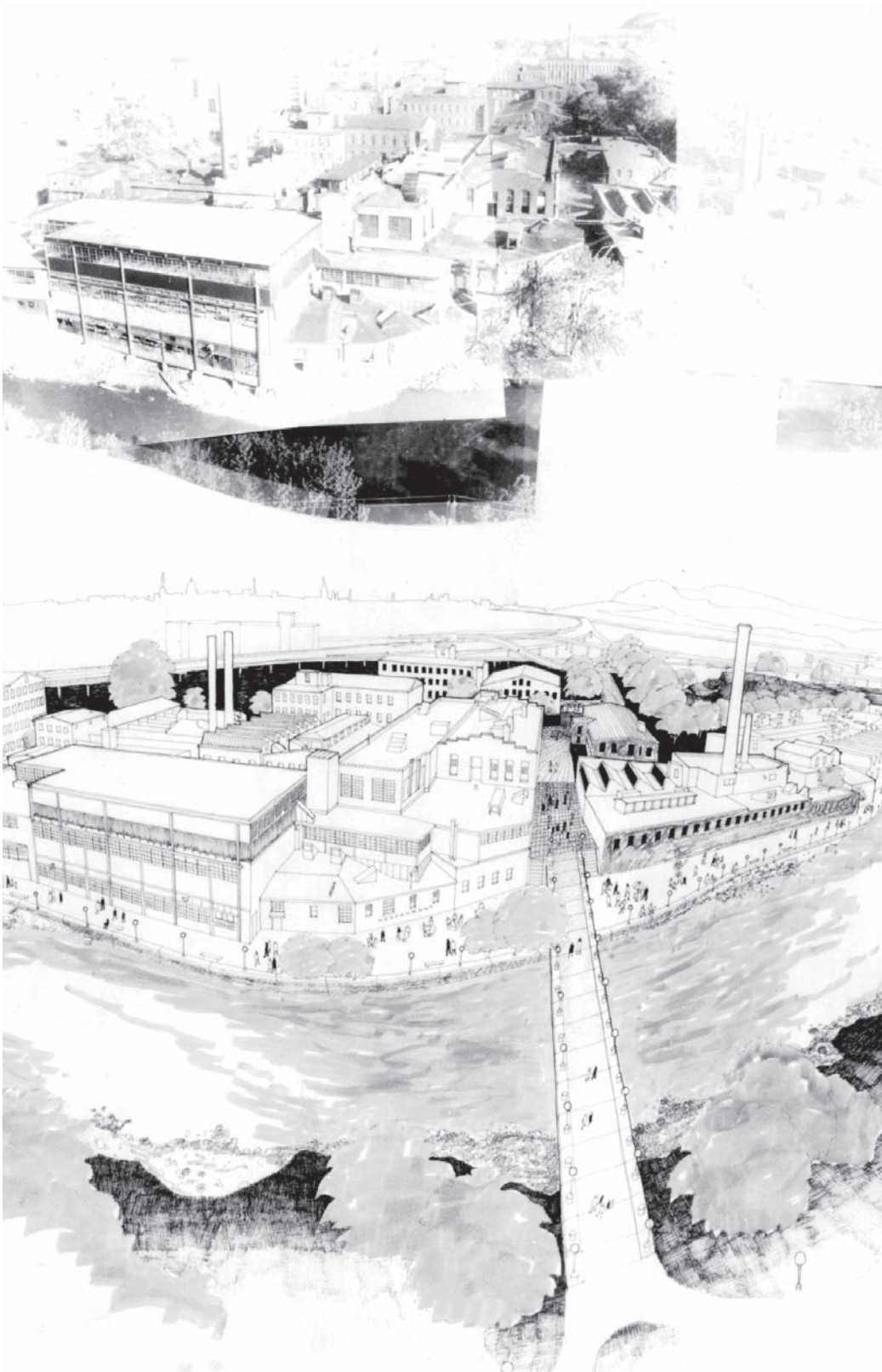
Natsios Young Architects

**1969-73
Great Falls Committee
Paterson NJ**

- Creation of 90-acre historic district with fifty 1820-1910 industrial buildings water-power systems parks.
- Schematic design for alternative re-uses.
- Survey, historical research, documentation.
- Federal application for historic district.
- Brochures and articles for publicity and funds.

*"Paterson lies in the valley under the Passaic Falls
its spent waters forming the outline of his back.
He
lies on his right side, head near the thunder
of the waters filling his dreams! Eternally
asleep,
his dreams walk about the city where he per-
sists
incognito. Butterflies settle on his stone ear.
Immortal he neither moves nor rouses and is
seldom
seen, though he breathes and the subtleties of
his
machinations
drawing their substance from the noise of the
pouring
river
animate a thousand automatons."*

William Carlos Williams Paterson 1946-51



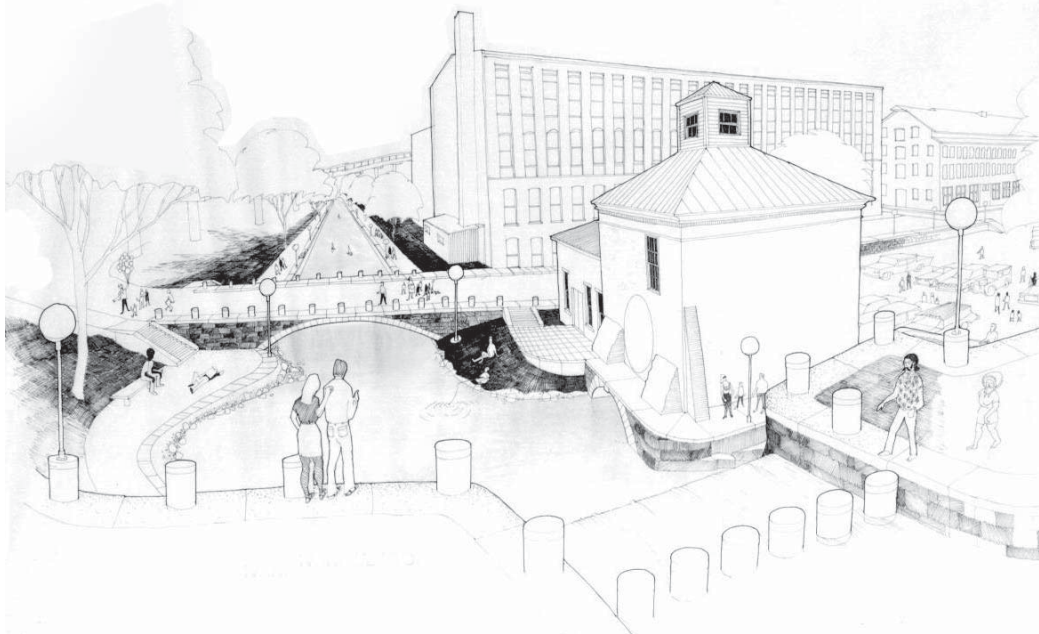
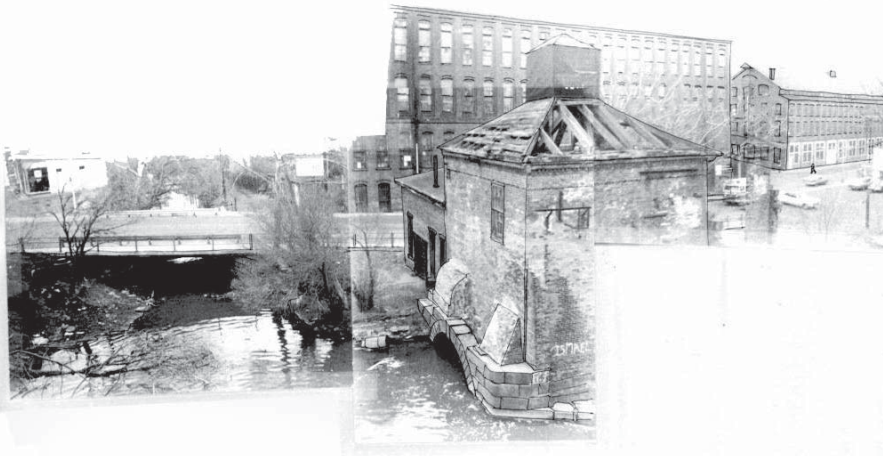
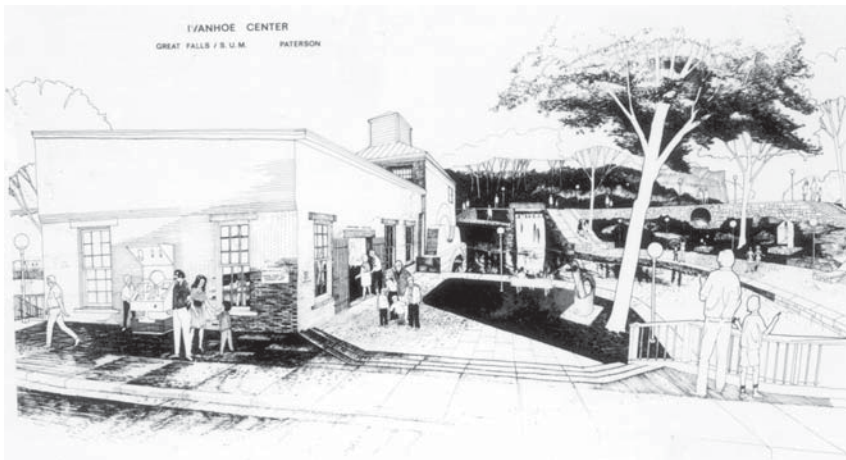
GREAT FALLS HISTORIC DISTRICT

Natsios Young Architects

1969-73
Great Falls Committee
Paterson NJ

- Creation of 90-acre historic district with fifty 1820-1910 industrial buildings water-power systems parks.
- Schematic design for alternative re-uses.
- Survey, historical research, documentation.
- Federal application for historic district.
- Brochures and articles for publicity and funds.

For more on the city of Paterson, see the Library of Congress American Memory Project: "Working in Paterson: Occupational Heritage in an Urban Setting" www.memory.loc.gov/ammem/wiphtm/pthome.html



IVANHOE WORKS

GREAT FALLS HISTORIC DISTRICT

Natsios Young Architects

**1969-73
Great Falls Committee
Paterson NJ**

- Creation of 90-acre historic district with fifty 1820-1910 industrial buildings waterpower systems parks.
- Schematic design for alternative re-uses.
- Survey historical research documentation.
- Federal application for historic district.
- Brochures and articles for publicity and funds.

Great Falls Raceway and Power System (1792): first major US water power system and basis for integrating urban planning with industrial development. American Society of Mechanical Engineers (ASME) Roster of Landmarks, Sites and Collections www.asme.org/history/roster_a.html#NJ



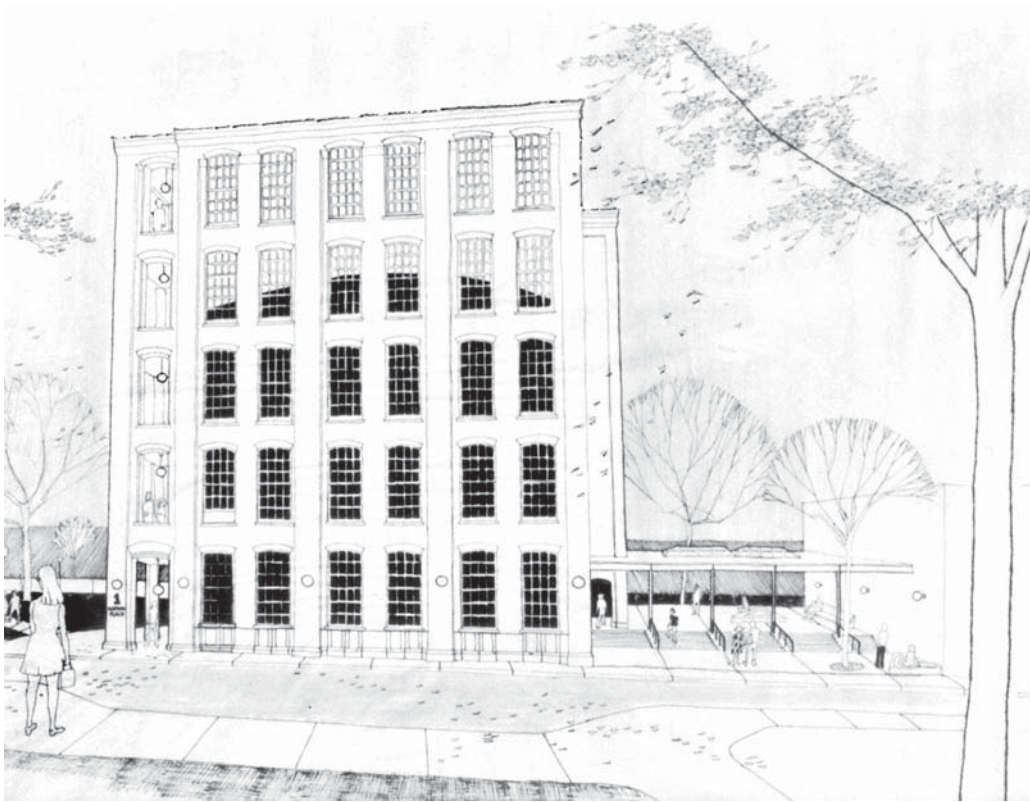
UPPER RACE AT STONEY ROAD

MODEL CITIES HOUSING

Natsios Young Architects

1970
Model Cities Program
City of Paterson, Paterson NJ

- Design for new housing in industrial buildings and residential stock.
- Program from repair of existing housing.
- Planning, schematic design, costs, phasing.
- Survey, historical research, documentation.



HARLEM RESTORATION PROJECT

Natsios Young Architects

1990
Harlem Restoration Project
New York, NY

- Conditions survey and planning for reuse of six industrial buildings for community facilities.

