



Product Documentation

Embarcadero® AppWave™ Browser

Apps User Guide

Version 2.0.1
Published July 14, 2011

© 2011 Embarcadero Technologies, Inc. Embarcadero, the Embarcadero Technologies logos, and all other Embarcadero Technologies product or service names are trademarks or registered trademarks of Embarcadero Technologies, Inc. All other trademarks are property of their respective owners.

Embarcadero Technologies, Inc. is a leading provider of award-winning tools for application developers and database professionals so they can design systems right, build them faster and run them better, regardless of their platform or programming language. Ninety of the Fortune 100 and an active community of more than three million users worldwide rely on Embarcadero products to increase productivity, reduce costs, simplify change management and compliance and accelerate innovation. The company's flagship tools include: Embarcadero® Change Manager™, CodeGear™ RAD Studio, DBArtisan®, Delphi®, ER/Studio®, JBuilder® and Rapid SQL®. Founded in 1993, Embarcadero is headquartered in San Francisco, with offices located around the world. Embarcadero is online at www.embarcadero.com.

July 14, 2011

Contents

- Welcome to AppWave Browser 5
 - About This Document5
 - Introduction.....5
 - Technical Requirements.....6
- Install and Set Up AppWave Browser7
 - Downloading AppWave Browser7
 - Connecting to AppWave on Your Network7
 - Configuring AppWave Browser Options9
 - Specifying AppWave Connection Properties.....11
- Use the AppWave Browser Apps Tab 15
 - Logging in to AppWave.....15
 - Using the AppWave Browser Interface.....16
 - Understanding AppWave Apps21
 - Launching AppWave Apps22
 - Creating Apps for Custom Applications23
 - Downloading Applications24
 - Using Applications Offline.....26
 - Controlling Downloading and Streaming Activity.....26
 - Installing Products26
 - Licensing Your Embarcadero Applications.....27
 - Using Trial Licenses.....27
 - Keeping Your Apps Current.....28
 - Organizing Your Applications in Folders30
 - Reading and Writing Product Reviews31
 - Removing Applications35
 - Uninstalling AppWave Browser.....35

CONTENTS

WELCOME TO APPWAVE BROWSER

This section has the following topics:

- [About This Document](#) on page 5
- [Introduction](#) on page 5
- [Technical Requirements](#) on page 6

ABOUT THIS DOCUMENT

This *AppWave Apps Browser User Guide* is the primary reference for the Apps tab of AppWave Browser. It provides an introduction to AppWave Browser and detailed instructions for common tasks.

For more information, see the main Embarcadero website at www.embarcadero.com or the documentation website at docs.embarcadero.com.

INTRODUCTION

Embarcadero All-Access is a comprehensive tool chest of award-winning, multi-platform Embarcadero products. All-Access lets you access a wide range of applications from a single launch point.

- **Architects** have access to design and modeling applications.
- **Developers** have access to a wide range of applications for developing, testing, and tuning code.
- **DBAs** can use applications to monitor, analyze, optimize, and manage database systems.

With Embarcadero All-Access you get:

- **AppWave:** Lets you centrally provision, manage and update your All-Access software and licenses inside your own firewall. You control what product versions are available to end users from the All-Access AppWave Browser. With network licensing, you can use the server to centrally control the list of authorized users, and what licenses they have access to.
- **AppWave Browser:** Provides a primary entry point to the various products used with All-Access and those applications that you have mastered inhouse. It allows you to launch, install, update, and select product versions, all from a single user interface; and can be configured to run standalone, to receive products from Embarcadero, or to run with AppWave on your own network.

- **All-Access Membership:** Provides support, updates, upgrades, new products, and access to premium content on the Embarcadero Developer Network (EDN), plus Embarcadero Apps for click-and-run access to your applications without installation.
- **All-Access Pass:** A license key that unlocks all applications for a given All-Access level.

TECHNICAL REQUIREMENTS

AppWave Browser is a Windows application that is supported on the following operating systems:

- Windows XP SP3 (32-bit)
- Vista SP2 (32-bit)
- Windows 7 (32-bit and 64-bit)
- Windows 2008 R2

AppWave is supported on Mozilla Firefox, or Internet Explorer 7 or later.

AppWave Browser supports 32-bit applications on 32-bit and 64-bit operating systems. Mastering 64-bit applications is not supported.

AppWave Browser is 41 MB in size and requires a minimum of 70 MB of memory to start. More memory will be consumed based on usage.

Default cache size for AppWave Browser varies on the operating system used and the amount of memory available.

Products available in the AppWave Browser have the same approximate memory and disk size requirements as they do independent of AppWave. For the requirements of individual Embarcadero products, consult the product documentation at: <http://docs.embarcadero.com>.

AppWave Browser must run on an uncompressed disk. Disk compression is not supported at this time.

Turbo mode improves overall AppWave Browser performance, and is the recommended default. Running in Turbo mode requires local administrator rights the first time the AppWave Browser is launched.

INSTALL AND SET UP APPWAVE BROWSER

This section is comprised of the following topics:

- [Downloading AppWave Browser](#) on page 7
- [Connecting to AppWave on Your Network](#) on page 7
- [Configuring AppWave Browser Options](#) on page 9
- [Specifying AppWave Connection Properties](#) on page 11

DOWNLOADING APPWAVE BROWSER

You can access applications from AppWave using AppWave Browser. Follow these instructions, and substitute the correct values for the AppWave host name and port: Your administrator will provide this information to you.

- 1 From a browser, connect to AppWave at:

```
http://<serverhostname>:<portnumber>/aaserver
```

- 2 The AppWave **HOME** page lists the AppWave Browser. Click **DOWNLOAD**.
- 3 Save the AppWave Browser executable to disk; the download location depends on your browser setting.

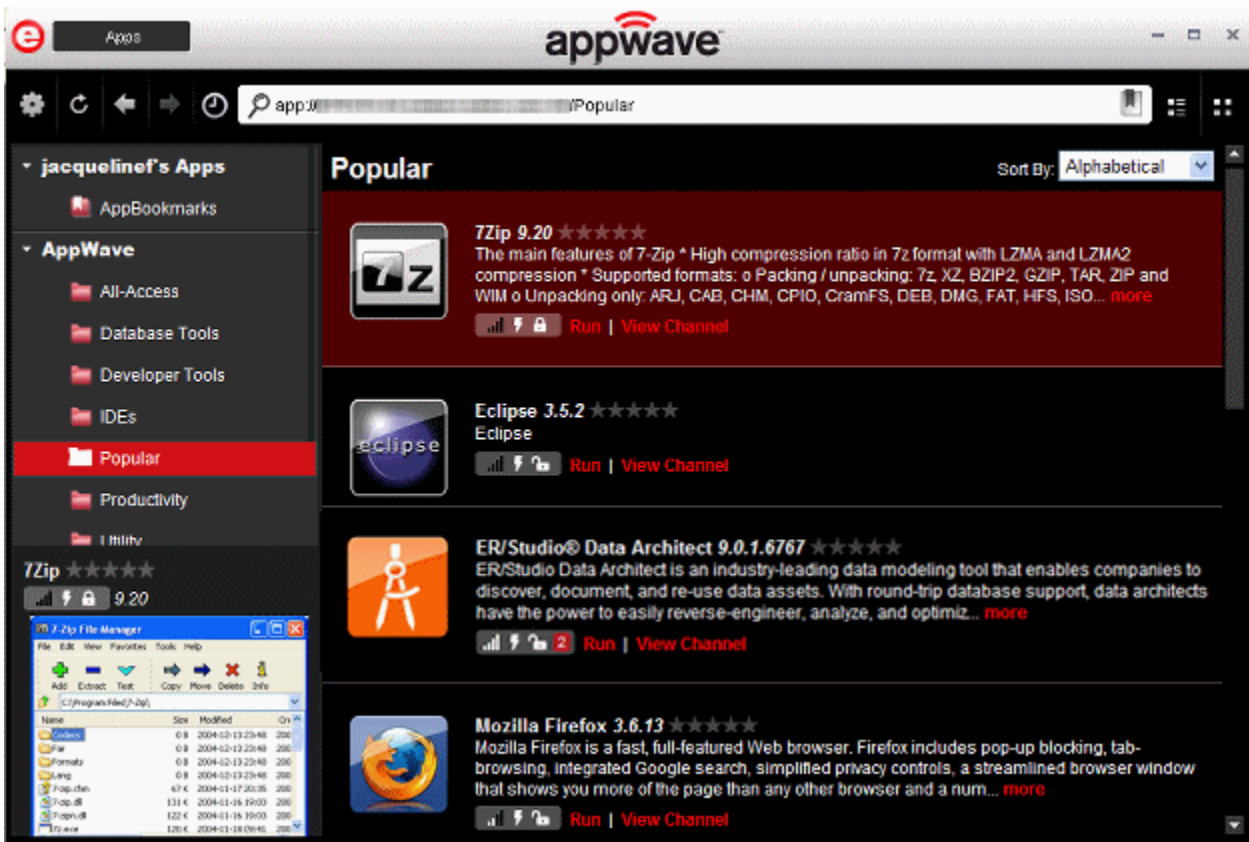
CONNECTING TO APPWAVE ON YOUR NETWORK

To connect to AppWave on your network, you must first connect to AppWave via a Web browser and download AppWave Browser. AppWave handles the licensing, and you can immediately begin using the applications that are available on AppWave. AppWave Browser is configured to connect to the AppWave from which the Browser was downloaded.

To launch AppWave Browser, double-click the AppWave Browser executable.

NOTE: If the administrator has not already configured your user ID to allow you to access the applications in AppWave, you will either see an information dialog advising you to contact your administrator or a user account will be created automatically.

AppWave Browser launches. You are automatically connected to your AppWave, the AppWave from which you downloaded the AppWave Browser application. Any applications the administrator has granted you access to are shown in the AppWave Browser product window



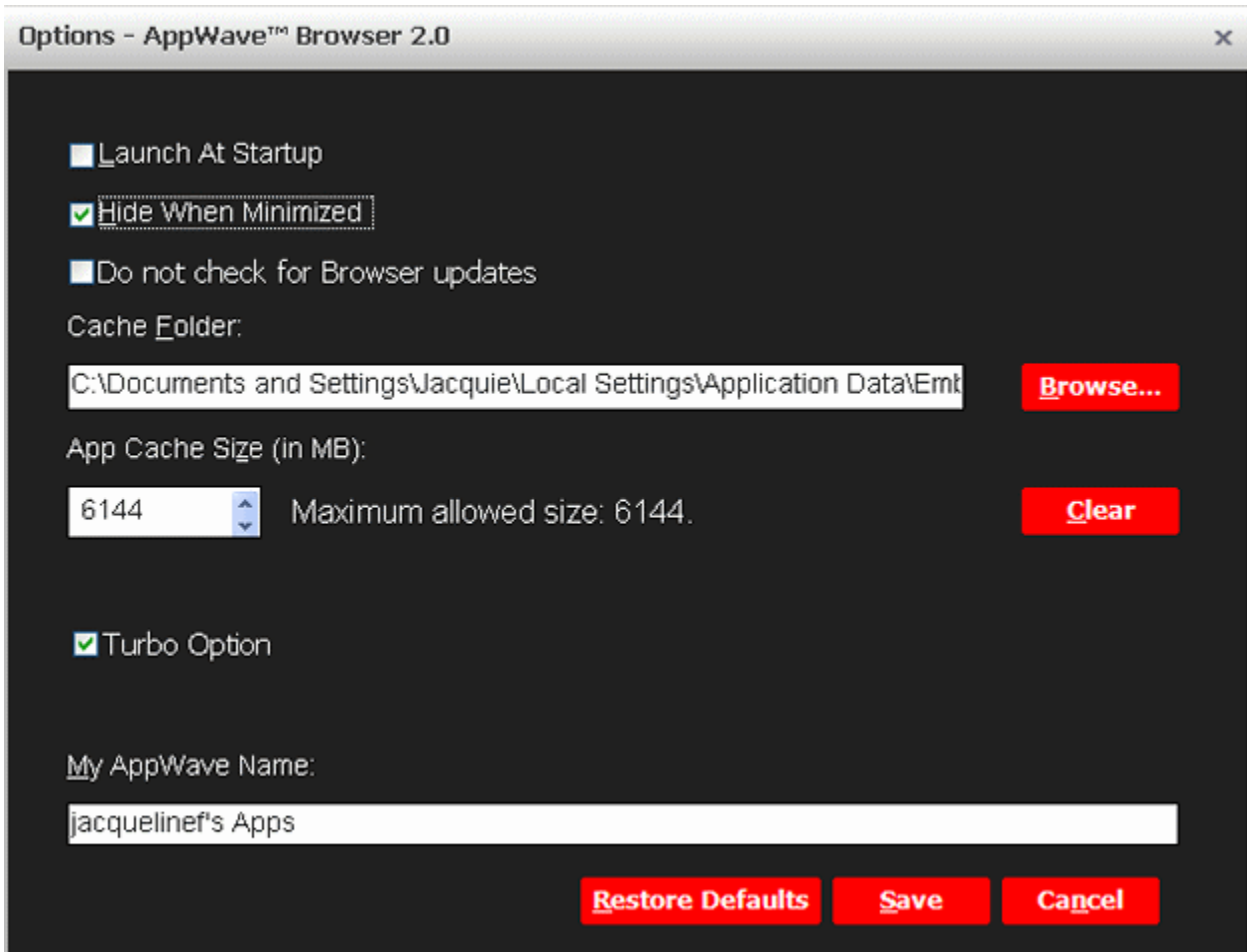
If your Windows user account has administrative privileges, AppWave Browser automatically runs in Turbo Mode, where a small piece of software is added to your operating system which enables AppWave Browser to run faster. For more information, see [Configuring AppWave Browser Options](#) on page 9.

CONFIGURING APPWAVE BROWSER OPTIONS

AppWave Browser options allow you to configure AppWave Browser behaviors including launching, download folder location, and proxy and AppWave server specifics.

- 1 Click the **Tools and Options** icon [] and choose **Options....**

The **Options** dialog appears.



- 2 Specify your preferences and then click **Save**.

The following describes the options available.

Launch At Startup: Starts AppWave Browser when you log into Windows.

Hide When Minimized: Hides AppWave Browser when you click the minimize button, otherwise AppWave Browser window is reduced to the size used when it was last minimized. When AppWave Browser is minimized it can be brought to the forefront by clicking the AppWave Browser applet in the system tray.

Do not check for Browser updates: Does not check for updates for the AppWave Browser application when the Browser starts up. If you are running in Turbo mode and update the Browser, you will need to restart your system.

Cache Folder: Browse to the folder where you want your downloads to be stored. This is for your Product Repository. For information on downloading applications, see [Downloading Applications](#) on page 24.

App Cache Size: Amount of memory to set aside as cache for use with broadcasted applications. A larger cache can increase the speed at which an App responds and can increase performance when running multiple Apps simultaneously.

Turbo Option: Requires Administrative privileges for the computer on which you are running AppWave Browser. If the Turbo Option is enabled, when you run AppWave Browser, a file system driver is installed which allows AppWave to communicate with your hardware and operating system at a much lower level. AppWave Browser and the AppWave applications you run while Turbo is enabled will run faster because of the installation of the file system driver. By default, AppWave Browser runs in this mode if your Windows account has administrative privileges and if you are running AppWave Browser on a 32-bit machine.

When Turbo is not enabled, AppWave Browser does not require Administrative privileges. This is a zero-install mode for locked-down desktops where your operating system user permissions do not allow you to install drivers. Performance is only slightly less than that provided in Turbo mode.

My AppWave Name: This is the name of your local repository where your bookmarks and folders you create appear. This is also where an Imported Apps folder will appear if you import any Embarcadero products installed outside of AppWave.

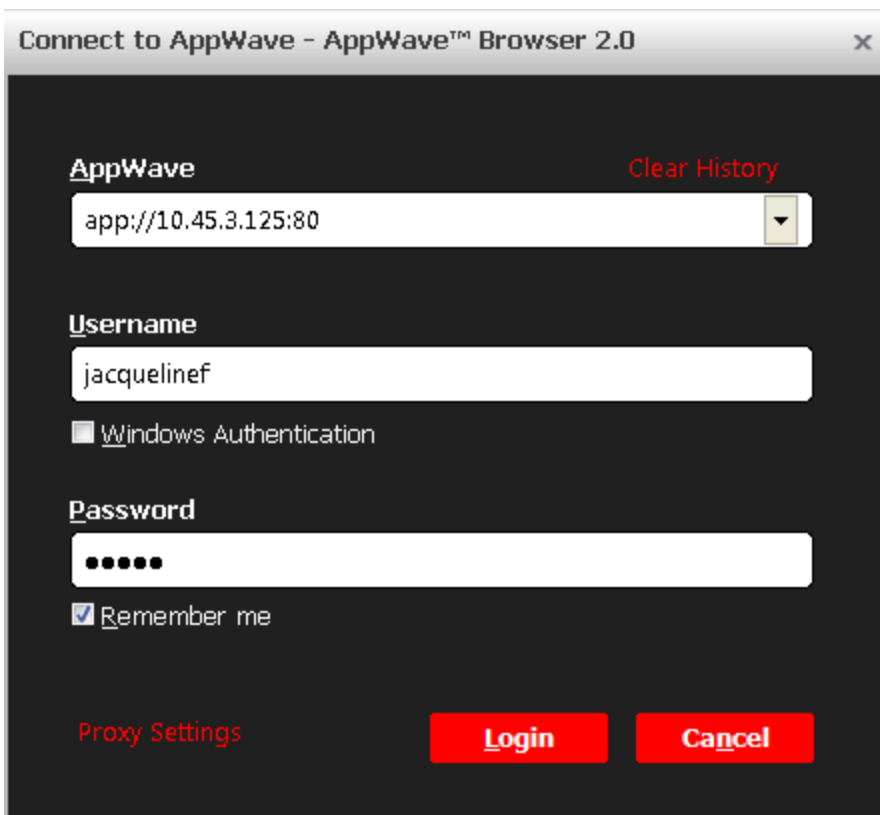
Restore Defaults: Click to restore the AppWave Browser options to their original configuration.

SPECIFYING APPWAVE CONNECTION PROPERTIES

When you download AppWave Browser from AppWave home page, included in the AppWave Browser is information about how to connect to that AppWave. If AppWave accepts your Windows credentials to log in to AppWave, then when you start AppWave Browser you should automatically connect to your home AppWave. If you need to connect using another login name and password, connect to a different AppWave or connect to AppWave via a proxy server, follow the directions below.

- 1 Click the **Tools and Options** icon  and select **Connect...**

The **Connect to AppWave** dialog appears.



Connect to AppWave - AppWave™ Browser 2.0

AppWave Clear History

app://10.45.3.125:80

Username

jacquelinef

Windows Authentication

Password

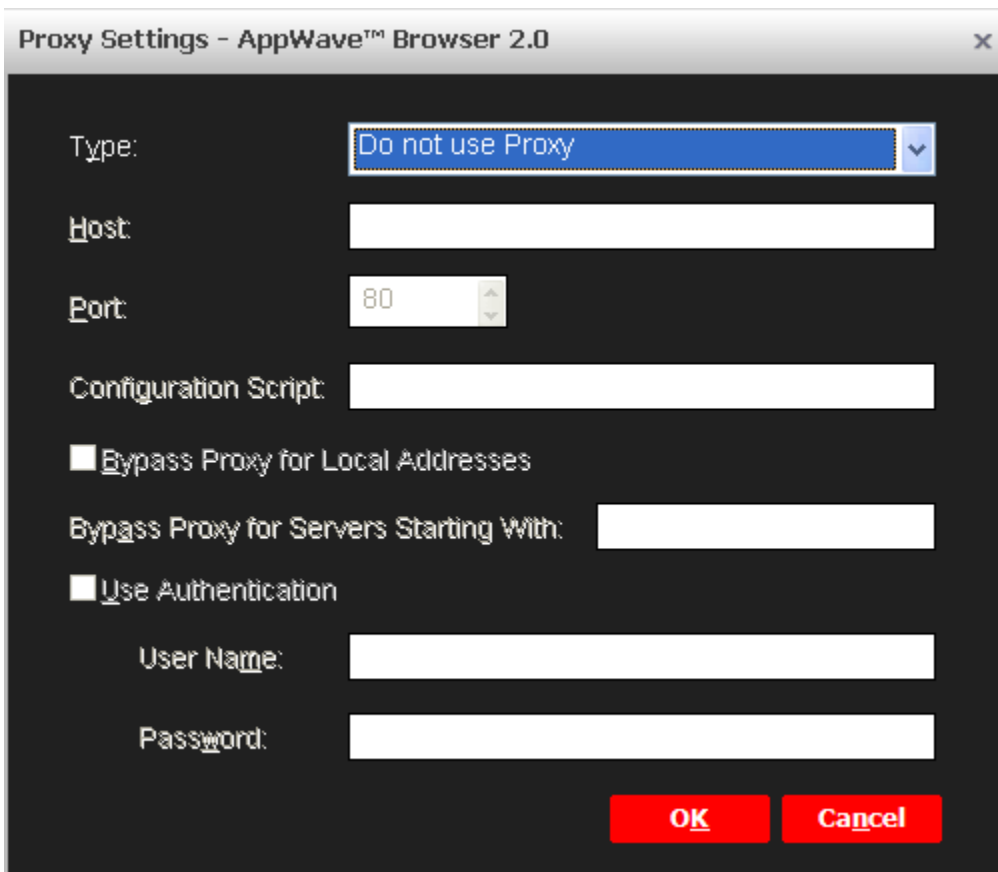
•••••

Remember me

Proxy Settings Login Cancel

- 2 Specify your connection properties and then click **Login**.

NOTE: If you use a proxy servers to connect to the internet, click **Proxy Settings** and configure the proxy server.



The following describes the connection properties you can specify:

AppWave: The IP address or host name of the AppWave you want to connect to.

Username/Password: Specify your AppWave account user name and password. This may be different from your Windows user name and password. AppWave Login accounts are created locally by the administrator on AppWave.

Windows Authentication: Using this login allows you to use your Windows user name and password to log in to AppWave. This functionality is used in an LDAP environment where AppWave and the LDAP server are synchronized. When this option is deselected, you can use another user's computer who is running AppWave Browser, and then use your domain ID and password to log in to Windows and then into AppWave.

Clear History: Deletes information about AppWave connections you have made in the past.

Proxy Settings...: Click to describe the proxy server you use to connect to the Internet. AppWave Browser needs to connect to the Internet to access AppWave.

- **Type:** Select a proxy configuration type.
 - **Do not use Proxy:** When selected, AppWave Browser uses a direct connection to the Internet to communicate with AppWave.
 - **Configure Manually Proxy Settings:** Displays configuration fields that you can complete to specify the Proxy server details.
 - **Autodetect Network Proxy Settings:** Automatically detects and connects to the Proxy Server in order to communicate with AppWave.
 - **Use Proxy Configuration Script:** Lets you specify the name of the Configuration Script to run that provides proxy server configuration details.
 - **Use Internet Explorer Proxy Settings:** Use whatever settings Internet Explorer has been set to use. These are the settings specified in the Internet Properties applet of the Windows Control Panel.
- **Host:** Host name of the Proxy server.
- **Port:** Communication port of the Proxy server.
- **Configuration Script:** This is a standard configuration script to configure a Proxy Server.
- **Bypass Proxy for Local Addresses:** If selected, does not use proxy server to connect to AppWave systems on your intranet. If you have a proxy server configured all your internet activity goes through the proxy server. Selecting this option allows you to directly connect to an AppWave on your intranet, bypassing the proxy server.
 - **Bypass Proxy for Servers Starting With:** For AppWave addresses you want to connect to directly, specify the first few characters of the AppWave hostname or IP address, using either the host name or IP address. The format specified here must agree with the format used in the AppWave field to specify the AppWave address.
- **Use Authentication:** Select if connecting to your Proxy server requires user authentication.
 - **User Name:** User account name for authentication on the Proxy server.
 - **Password:** Password for the Proxy user account.

USE THE APPWAVE BROWSER APPS TAB

This section covers the following topics to help you understand and effectively use the AppWave Browser Apps tab:

- [Logging in to AppWave](#) on page 15
- [Using the AppWave Browser Interface](#) on page 16
- [Understanding AppWave Apps](#) on page 21
- [Launching AppWave Apps](#) on page 22
- [Downloading Applications](#) on page 24
- [Using Applications Offline](#) on page 26
- [Controlling Downloading and Streaming Activity](#) on page 26
- [Installing Products](#) on page 26
- [Licensing Your Embarcadero Applications](#) on page 27
- [Using Trial Licenses](#) on page 27
- [Keeping Your Apps Current](#) on page 28
- [Organizing Your Applications in Folders](#) on page 30
- [Reading and Writing Product Reviews](#) on page 31
- [Removing Applications](#) on page 35
- [Uninstalling AppWave Browser](#) on page 35

LOGGING IN TO APPWAVE

When you launch AppWave Browser, AppWave Browser passes your Windows login name and password to your AppWave for authentication. This is the AppWave from which you downloaded the AppWave Browser executable. Depending on how your AppWave is configured, if a user account does not exist for that login name and password, AppWave Browser may prompt you to create a user account. If you choose to, an account will be created for you and you will be assigned to the All Users configuration, which may mean that your access to products and features is limited. Contact the AppWave administrator to create an account for you with the product and feature access that you require.

USING THE APPWAVE BROWSER INTERFACE

The tabs you see and the functions you have access to are determined by the permissions granted to your account by the AppWave administrator. You will not see the Studio or Admin tabs shown below unless the administrator has given you permission. You will see only the Apps tab.



For information on the AppWave Studio tab, see the *AppWave Studio User Guide*.

For information on the AppWave Admin tab, see the *AppWave Administrator Guide*.

The following describes the main interface components of the Apps tab of AppWave Browser and their usage.



User's Apps: Use User's Apps to organize applications you use. You can provide a name for User's Apps in the AppWave Browser Options; select **Tools and Options > Options > My AppWave Name**. The default name is your operating system name. In User's Apps, you can create folders to organize bookmarks to the applications you use and use the AppBookmarks folder which contains bookmarks of applications you have marked as being a favorite application.

AppWave: Displays all the applications available to you on AppWave. These can include Embarcadero applications, third-party applications Embarcadero supports, and also Apps mastered by your company through AppWave Studio and broadcasted from AppWave. When new applications become available you will receive a notification in your system tray. You can then check the Notifications to see what's new on AppWave.

All-Access: Shows all the applications licensed to your company through the Embarcadero AppWave Store.

AppWave Folders: These are folders your administrator created, named, and assigned to specific users or to all users. They contain applications to which your administrator is granting you access. These applications are automatically broadcasted to your AppWave Browser.

Notifications: These messages come from AppWave. The AppWave administrator configures what types of messages are sent out as notifications. Notification messages can include new product or version availability, downloads complete, and download errors. You can also subscribe to an RSS news feed of notifications from the AppWave Home page of the AppWave console application.

Items/Searches: Click to select from a list of items previously selected or searches previously run, or to clear previous items or searches.

Search Filter: Click to choose an application attribute by which to limit the search. The search will look for matches for the specified search string only in the text of that application attribute.

Activity: Click to view the status of any downloads you initiated and Apps that are currently running.

Application Window: Shows a list of applications. The list that appears depends on what is selected in User's Apps, AppWave, or entered in the Search Bar.

Tools and Options: Click the gear icon to download, configure, import and launch applications; create folders, and master AppWave Apps; and connect to and configure the AppWave you connect to. The options available depend on what is selected in My Apps, what is selected in the AppWave menus, and user permissions.

Refresh: Click to see everything that is new since the last auto refresh or reconnect; this includes updates to the following:

- **App ratings and reviews:** such as when a new review was added, rejected or removed.
- **License permissions:** such as when the admin has assigned a new license to the user or denied a license for the user
- **Applications,** such as when a new application was added or removed.
- **Folders:** such as when the user has been assigned a new folder or an already assigned folder was removed.
- **User permissions.** such as when the admin grants authoring permission to the user enabling the user to use AppWave Studio.

AppWave Browser is automatically refreshed every five minutes.

Previous/Next Page: If you change the contents of the Application Window, by searching and filtering, you can switch back to a previous view and then return to the previously most recent view by clicking these buttons.

Add an AppBookmark: Select an App in the Application Window and then click this button to add a shortcut to the selected App to the AppBookmarks folder in My Apps. You can later delete the bookmark by right-clicking it and selecting **Delete Item**.

Details View/Tile View: Switch between a list of application names and related information or detailed panels that include a description of the application and review ratings.

Icons in Application Window: In addition to displaying the product logo in the application window, the icons at the bottom right of the logo convey the following information.



AppWave App: Apps that can be broadcasted to your desktop.



Template: App mastering templates allow you to master that application in AppWave Studio, if you have the required permissions. For more information, see the *AppWave Studio User Guide*.



Installer/Internet Ready: App installers that you can download and run. This also designates Apps that are Internet ready and must be cached on AppWave before you can run them.



Readiness: Indicates whether the App is local to your hard disk, available on AppWave or available on the AppWave Store.

- One bar indicates that the App is available on the Embarcadero AppWave Store but not yet cached on your AppWave; readiness is Internet. Depending on how your Administrator has configured AppWave, you may or may not be able to initiate caching. Contact your administrator if you cannot initiate caching.
- Two bars indicates that the App is cached on your AppWave; readiness is AppWave.
- Four bars indicates that the App has been broadcasted to your system.



License: Indicates whether or not the application has been licensed. The unlocked padlock means that all licensing details have been configured and you can run this application. The locked padlocks means that there are some licenses that your AppWave administrator needs to add or configure before you can run this application.



Folders: Folders can be created by either the AppWave Browser user, in which case the folder appears in *My Apps*, or the AppWave Administrator, in which case the folder appears in the AppWave menu.

Run: Click to run the application.

View Channel: Click to view application details and read, write, and rate application reviews.

Search/Address Bar: Enter the first few letters to limit the applications shown in the Application Window to only those matching those letters. Enter the full name of the application to display that application directly. You can also enter a search word, such as productivity to find all the applications whose titles or details contain that word. Click a product or folder and the address of that item appears. When you've found the application you're looking for, you can copy the address and share it with a colleague who, if connected to the same AppWave, can use the address to directly display the search matches in the application window. In the search/address bar you can also enter the URI of an AppWave you want to connect to.

The following are supported in the search bar:

- Search for one or more words (string).
- Use double quotes (" ") around strings to find only matches containing the strings in the given order.
- Use the asterisk symbol (*) to fill in the blanks. For example, "database * tool" returns "database management tool" and "database optimization tool".
- Use the OR operator to find matches containing any string specified in the query. For example, database OR tools returns all matches with either "database" or with "tools".
- Use the & operator to find matches containing more than one string. For example, database & tools returns only matches containing both "database" and "tools".

You can further limit the matches found by your search criteria by being more specific and manually entering the search url parameters in the address bar. The general format of the Search URL is

```
app://[location]/[URI]/[command[?params]]
```

where

location is a required parameters has the format of

```
appwave_address[/folder_like_structure]
```

Location can also be specified so all available locations are searched, such as

```
app://search?all=database and management
```

where all locations are searched for the keywords database and management

Location URL examples:

- `app://10.40.125:80/All-Access`, the search is performed on AppWave at the specified address in the All-Access folder.
- `app://localhost:80/AppBookmarks`, the search is performed on the local AppWave in the AppBookmarks folder.
- `app://local/AppBookmarks`, the search is performed on the local machine in the favorites directory. The search can focus on any directory you created on your User's folder, that is `app://local/AppBookmarks`.

URI is a list of application attributes in a path-like structure in the following order:

```
<application name>/ [<language>/[<version>/>/[<edition>/[<launch type>  
<license>/[<license type>]]]]]]
```

The order of the URI attributes is very strict and a space must be specified if you want to omit an attribute.

URI examples

- `app://local/AppBookmarks/3rdRail`, the search is performed on the local machine in the AppBookmarks folder, for any applications matching 3rdRail.

`command` is a command that allows you to perform an action on the application matches, such as search, details, launch, and import. When `command` is not present, AppWave Browser tries to navigate to that URL and display the content of the item designed by URL or all the matching applications if contains application attributes (URI).

- `search` finds an application and displays it in the application window.

Examples:

```
app://search?all="database management", searches and displays all applications whose description contains "database management".
```

```
app://localhost:80/All-Access/search?language=english&version=2.0&all=App&license=platinum, the search is performed on the local AppWave in the All-Access folder, for any applications matching English language, version 2.0, broadcasted Launch Type, All-Access Platinum License.
```

- `details` displays the application details page.

Examples:

```
app://localhost:80/3rdRail/details?page=Home
```

```
app://localhost:80/Notepad++/details?page=Reviews
```

The `details` command has one parameter that indicates the page to display when looking at details and can have following values: `Home` and `Reviews`

- `launch` starts an application.

Example:

```
app://localhost:80/Embarcadero DB Optimizer/ENGLISH/2.5.1/XE Pro/App//Concurrent/launch
```

To pass command-line arguments when launching an application then this URL must contain the parameters as follows:

```
app://localhost:80/Embarcadero® DB Optimizer™/ENGLISH/2.5.1/XE Pro/App//Concurrent/launch?%1=arg1&arg2=value
```

UNDERSTANDING APPWAVE APPS

In addition to the standard installation executables for AppWave applications, Embarcadero provides AppWave Apps versions of each product. Apps simplify deployment and enable side-by-side versioning. When AppWave Browser is not running in Turbo mode, such as in a locked-down desktop environments, Apps are ideal because they do not affect system files or system registry settings.

AppWave Apps run within their own space without sharing DLLs or system-wide settings that could conflict with other applications. Application data, including configuration and license information, is stored locally on the hard disk, separate from the executable itself. AppWave Apps run on the local machine and are launched from the network using AppWave Browser.

AppWave Apps are provisioned and licensed by AppWave (leveraging the Embarcadero License Center which is integrated) and then accessed using AppWave Browser. AppWave obtains software updates from the AppWave Store and make them available to the AppWave Browser user.

Using Apps on a shared AppWave avoids the need to keep multiple machines updated with new versions. By keeping the AppWave versions up to date, you will automatically gain access to the latest versions of the products.

Apps launched from AppWave Browser benefit from application streaming because the application will begin to open before the product has been fully downloaded. However, if you need frequent access to an application, you should download and run the file locally, which is typically faster than running it from AppWave.

See Also

[Launching AppWave Apps](#) on page 22

[Downloading Applications](#) on page 24

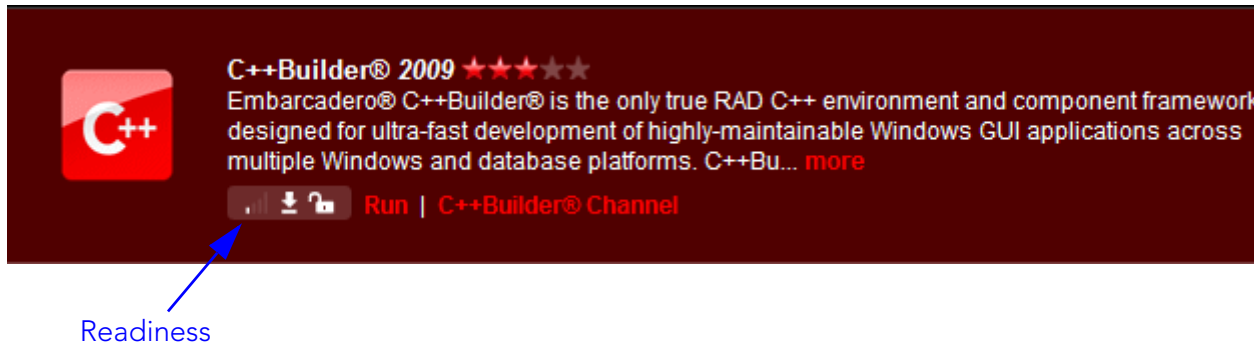
LAUNCHING APPWAVE APPS

AppWave Apps are applications that are mastered into a single file that runs without installation. The application runs on the desktop, locally and under 'full power' but does not change system areas of the OS or registry. Apps run within their own space, with no shared DLLs or other system-wide settings that could conflict with other applications. Application data, including settings and licenses are stored locally on the hard drive separate from the executable.

There are two ways to launch an App. You can either launch the App from AppWave and it will be broadcasted to your desktop or you can download the App to your local repository, in which case the application will launch a little faster than when run directly from AppWave. Downloaded applications have a readiness status of Local (100%).

The size of the application cache, set in the AppWave Browser options, can affect how efficiently the Apps run. If the entire App fits into the cache, it will run faster. If you are running multiple Apps simultaneously, a large cache can also be beneficial. For information on setting the cache, see [Configuring AppWave Browser Options](#) on page 9.

- 1 Select the folder or AppWave containing the application you want to run.
- 2 In the application window, locate the App you want to run by scrolling through the list, or by using the Search Bar. For more information, see the "Search" section of [Using the AppWave Browser Interface](#) on page 16.



Notice the Readiness status. The status can be one of the following

- **Internet:** The application is available on the AppWave Store but has not yet been downloaded to your AppWave. Depending on your privileges, when you click Launch for an Internet-available application, the application download from the AppWave Store to your AppWave will be initiated. Otherwise, see your AppWave Administrator to obtain the product. For this status, there will be only one bar displayed by the Readiness icon.
- **AppWave:** The application has been downloaded from the AppWave Store and is available on your AppWave. For this status, there will be two bars displayed by the Readiness icon.
- **Local:** The application is available on your local system. It has been broadcasted to your local computer or you have installed the application and imported it into AppWave Browser. For this status, there will be four bars displayed by the Readiness icon.

3 Click the **Run** button of the AppWave App.

The App launches. The App will run a little faster if it has been downloaded to your local disk. For information on downloading applications, see [Downloading Applications](#) on page 24.

See Also

[Understanding AppWave Apps](#) on page 21

CREATING APPS FOR CUSTOM APPLICATIONS

For information about using the **New AppWave Custom App** command, the Studio tab or launching a mastering session by double-clicking a template in the Application Window, see the *AppWave Studio User Guide*.

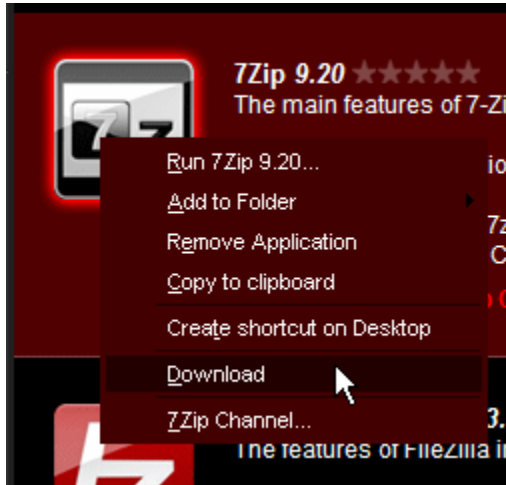
DOWNLOADING APPLICATIONS

Applications for which You may want to download an application for the following reasons:

- You want to run the application on a machine that does not have access to AppWave. In this case, you can download the installer on a machine that has access to AppWave, copy the installer to the machine with no AppWave access, and then run it on the other machine. You may need a license key to run the application.
- You want to install the application at another time. In this case you can download the installer and then run it later. For large applications, the installation will be much faster if the installer is first copied locally.
- Your environment includes a backup AppWave license server and you want to be able to run your applications when AppWave is unavailable but you can access the backup license server.
- You want to run the application when you are not connected to AppWave, that is for offline usage.

NOTE: The AppWave Administrator can also push applications to your AppWave Browser such that applications are automatically downloaded when the you run the AppWave Browser. Folders pushed to the AppWave Browser appear in the AppWave area of the AppWave Browser.

- 1 Using the search bar, locate the application and version you want to download.
- 2 Right-click the application and select **Download**.

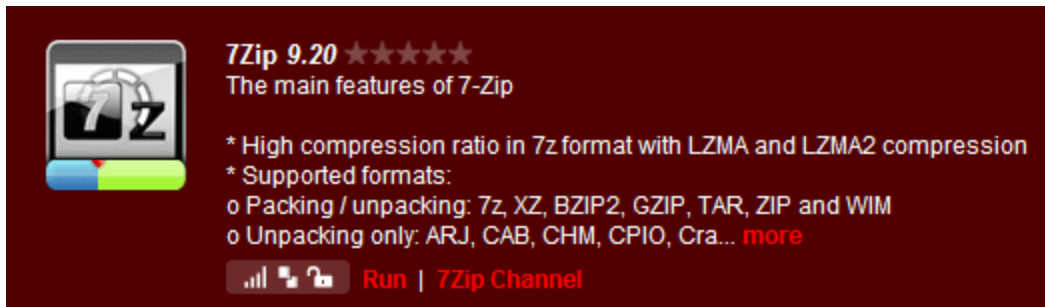


The application is downloaded to an application directory in your local repository:

Windows XP: C:\Documents and Settings\[username]\Local Settings\Application Data\Embarcadero\Product Repository

Windows 7 and Vista: C:\Users\[username]\AppData\Local\Embarcadero\Product Repository

At the bottom of the App icon in Details View, you will see that the download is in progress as shown in the following image.



When the application has been downloaded to your local repository, you will see a message indicating that the download has finished.

Launch the application.

For information on specifying your product repository or download location, see [Configuring AppWave Browser Options](#) on page 9.

USING APPLICATIONS OFFLINE

You can use your Embarcadero Apps offline if the following criteria have been met:

- Your administrator has configured AppWave to allow you to download Apps.
- You have downloaded the App to your local repository. For more information, see [Downloading Applications](#) on page 24.
- If you have access to a concurrent license only, you have checked out the license from within the App. If you have a named network license, you do not need to check out the license. You can use the license for the maximum number of days specified by the AppWave administrator.

CONTROLLING DOWNLOADING AND STREAMING ACTIVITY

Once downloading or streaming has started, you can click **Activity** to see the activity in the Activity Window. In the Activity Window, right-click the application that is downloading or streaming. The **Cancel Download/Streaming** option allows you to cancel the download of the application from AppWave to the your AppWave Browser local repository. You can also pause the download.

To resume downloading or streaming, right-click the App and select **Resume Downloading/Streaming**.

INSTALLING PRODUCTS

Download the application installer or App to AppWave Browser as described in [Downloading Applications](#) on page 24. Double-click the application installer to run the installer. Double-click the App to launch the application.


OR

In the Application Window, find and then double-click the application installer or App.

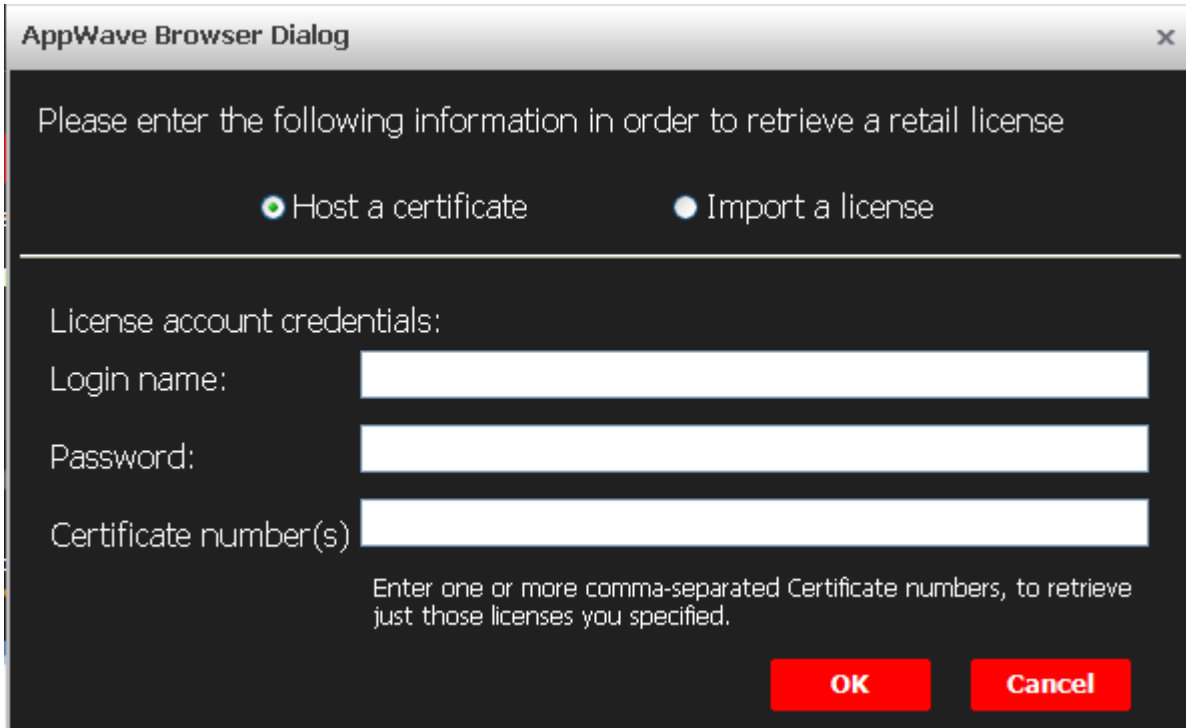
NOTE: For installers, the application installation program launches. Follow the prompts of the installer. For installation assistance, see the installation or quick start guide of the relevant product documentation at docs.embarcadero.com.

LICENSING YOUR EMBARCADERO APPLICATIONS

If you have workstation licenses to use applications, you can retrieve your licenses from the Embarcadero Developer Network (EDN). This will enable you to use the applications when not connected to AppWave.

- 1 Click the **Tools and Options** icon [] at the top of AppWave Browser and then select **Licensing > Add License Certificate**.

The following dialog appears.



The screenshot shows a dialog box titled "AppWave Browser Dialog" with a close button (X) in the top right corner. The main text reads: "Please enter the following information in order to retrieve a retail license". Below this text are two radio button options: "Host a certificate" (which is selected) and "Import a license". A horizontal line separates these options from the input fields. Under the heading "License account credentials:", there are three text input fields: "Login name:", "Password:", and "Certificate number(s)". Below the "Certificate number(s)" field, there is a note: "Enter one or more comma-separated Certificate numbers, to retrieve just those licenses you specified." At the bottom right of the dialog are two red buttons: "OK" and "Cancel".

You can either retrieve your license from EDN in which case you'll see the dialog above or import a license zip file that you have on your desktop

- 2 Complete the form as instructed and then click **OK**.

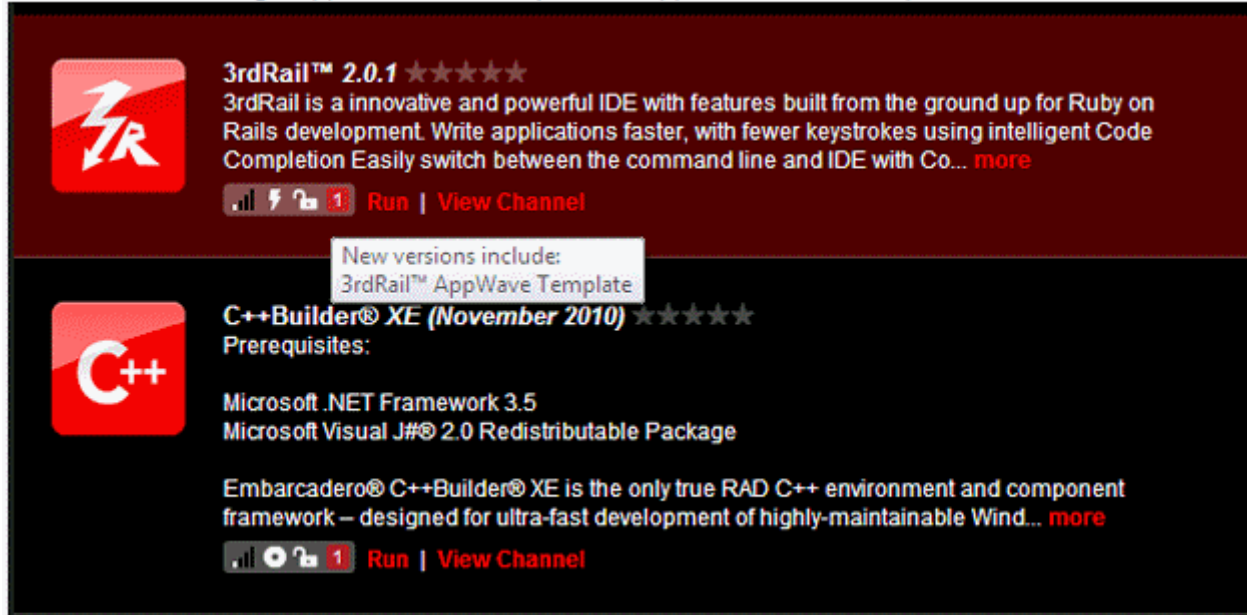
The information required to host a license certificate is included in an email Embarcadero Support sent to you when you purchased the license.

USING TRIAL LICENSES

Trial licenses are available for all Embarcadero products for a period of 30 days from the time the license was issued. If you want to try an Embarcadero product, contact your AppWave administrator.

KEEPING YOUR APPS CURRENT


By default, when there are multiple versions of an App available, only the latest version appears in the App Window but AppWave shows a red square in the App status that indicates that there are new versions available and how many there are.



When you go to the App Channel, you can click **View All** to see all the available versions. You can then run any version of the App available.

You can also ensure you always have the latest version of your applications by subscribing to AppWave notifications or by checking the Notifications in AppWave Browser, so you will always know when a new version is available.

Subscribing to AppWave Notifications

- 1 From the AppWave Home page, click the subscribe icon [] next to **AppWave notifications**.

embarcadero ADMIN Help

AppWave

The AppWave Browser lets you find and run your favorite applications instantly with zero install, and zero hassle. We hope you enjoy Embarcadero's on-demand software solutions, as well as our award-winning development and database tools. For more information about our products and how to use them, please visit www.embarcadero.com for links to product pages and learning resources.

Embarcadero AppWave Browser AppWaveBrowser_DEV-build.443-620110803302

Download the latest version of the AppWave Browser in English for Windows

During startup you may be required to provide the following AppWave address:

- Host: `ETT0TC20.embarcadero.com`
- Port: `80`

DOWNLOAD

DOCUMENT

- [Embarcadero Home](#)
- [Channel E](#)
- [Documents](#)
- [Product Wikis](#)
- [Embarcadero Developer Network](#)

VIDEOS

AppWave notifications

Embarcadero AppWave DEV-build 917 © Copyright 2011 Embarcadero Technologies, Inc. All Rights Reserved

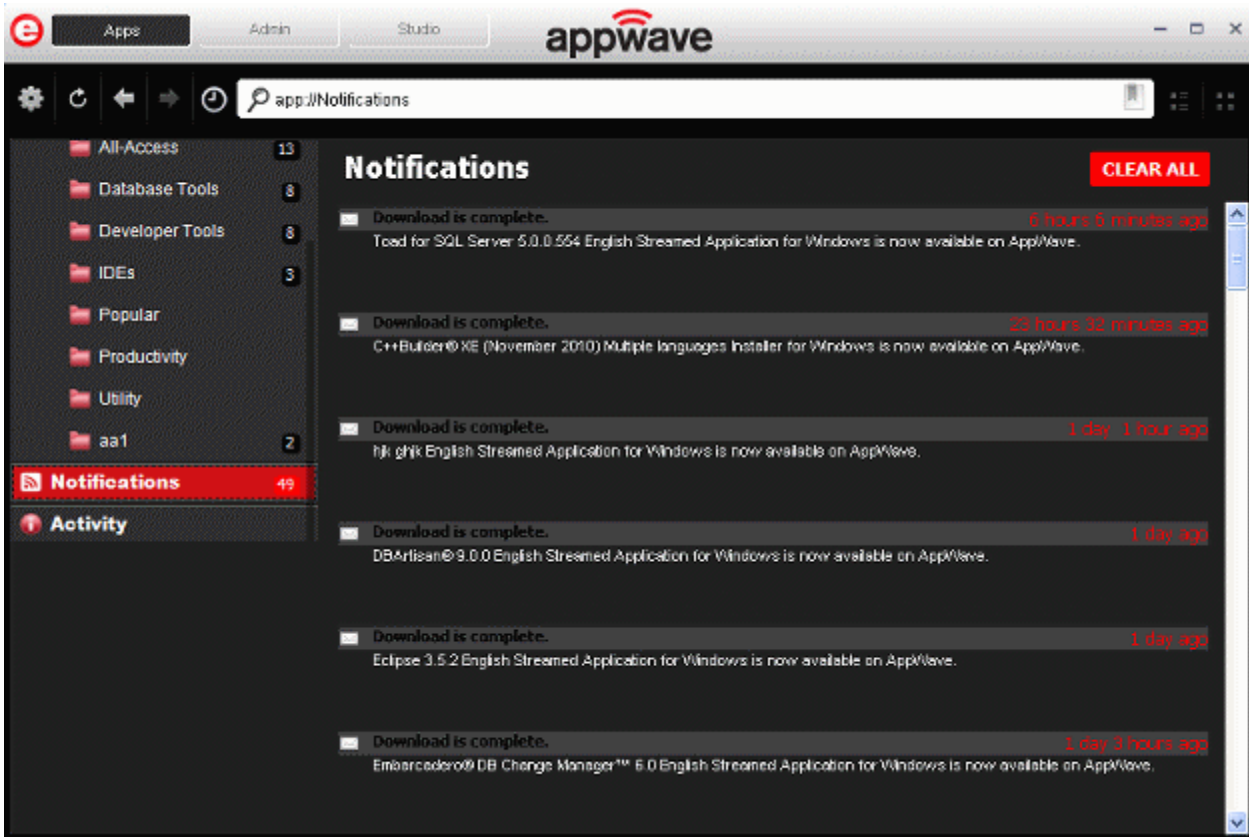
- 2 For Internet Explorer, on the RSS feed page that appears, you can see the latest notifications. Click **Subscribe to this feed**

For Mozilla Firefox, a **Subscribe with Live Bookmark** dialog appears where you can choose where to place the live bookmark.

Checking Notifications

From the AppWave Browser, click **Notifications**.

The Notifications appear. Once you have seen the notifications, click **CLEAR ALL** to unclutter the Notifications display.



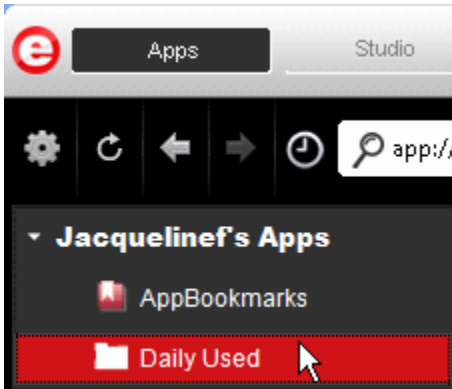
ORGANIZING YOUR APPLICATIONS IN FOLDERS

You can organize applications by creating your own folders and then adding applications to them. Moving an application into a folder does not actually move the installer or App, but rather creates a pointer in the folder to the application or App.

- 1 Right-click *My Apps*. and then select **New Folder**.
- 2 In the **Create New Folder** dialog, give the folder a meaningful name.
A new folder appears in your *My Apps*.
- 3 In the AppWave, locate the application you want to include in your new folder.

- 4 Right-click the application, select **Add to Folder** and then select the folder to which you want to add a link to the application.

Your new folder is added to your My Apps grouping. In the image below, the **Daily Used** folder is a user folder.



To view the products in a Folder, click the name of the Folder and the contents appear in the Application Window.

To delete a folder, right-click the name of the Folder and then select **Remove Folder**.

To rename a folder, right-click the name of the Folder and then select **Rename Folder**.

To remove an application from a user folder or from AppBookmarks, select the folder, right-click the application in the Application Window, and then select **Delete Item**.

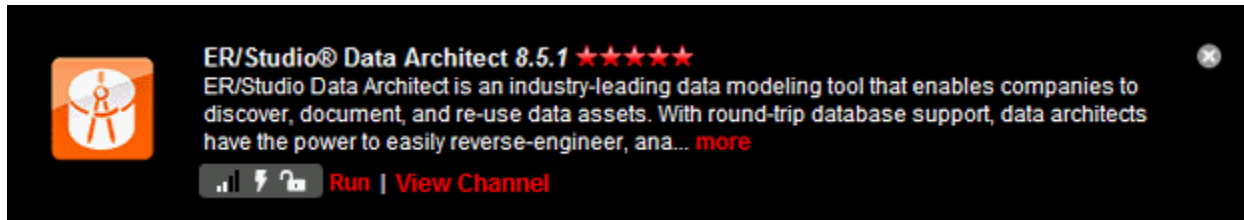
READING AND WRITING PRODUCT REVIEWS

Within AppWave Browser you can rate the available application and share your experiences using these applications with other users of the AppWave hosting the application. Ratings displayed for both products and their star ratings are weighted averages, so that a product or rating with three ratings of five stars, one rating of four stars and one rating of one star would receive an overall rating of four stars, $((5+5+5+4+1)/5=4)$. Once submitted, product and review ratings, and comments may be moderated by the AppWave administrator who may determine whether or not to post the review comments for viewing by other AppWave users. Each review is also screened for questionable or vulgar words that if present, will prevent the review from being accepted by AppWave.

Read a review

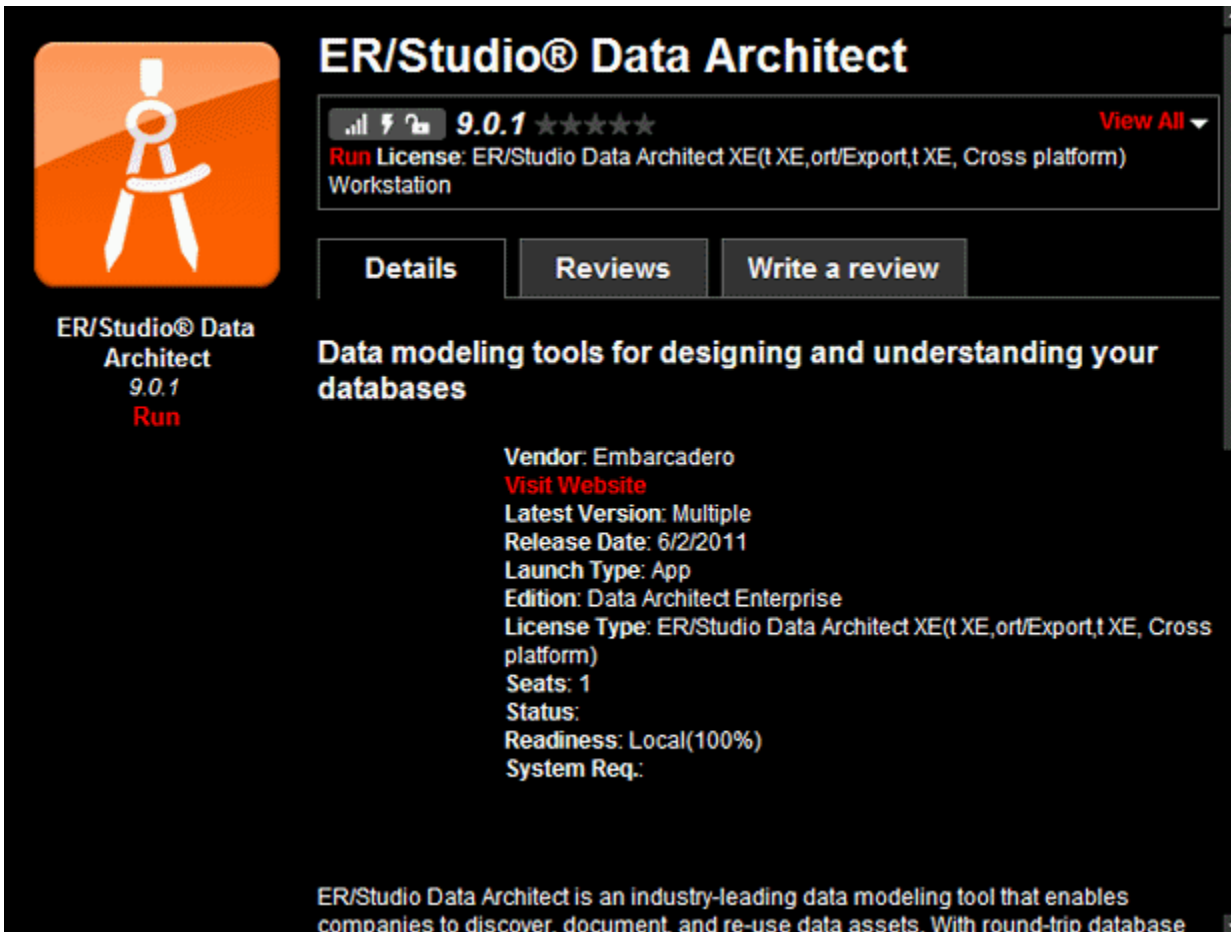
- 1 In the **Application Window**, locate the product you want to review or want to read reviews about.

TIP: Applications with reviews will have a number of colored stars, which represent the average rating for that product.



2 Click **View Channel**.

On the application channel, you can read a detailed description of the application, and read, write, and rate application reviews.



- 3 Click the **Reviews** tab.

The reviews pane by default shows the **Most Helpful Favorable** and **Most Helpful Critical Review** for the product.

The screenshot displays the product page for ER/Studio® Data Architect. At the top left is the product icon, an orange square with a white circle containing a stylized figure. To the right of the icon, the product name "ER/Studio® Data Architect" is shown in white. Below the name, the version "8.5.1" is displayed with five red stars, and the license "Run License: Concurrent" is noted. A "View All" link is visible in the top right corner. Below this information are three tabs: "Details", "Reviews" (which is selected), and "Write a review".

The "Reviews" section is divided into two columns. The left column is titled "Most Helpful Favorable Review" and features a green checkmark icon. It shows a review with a rating of five stars and five thumbs up, and one thumbs down. The review text reads: "An interactive environment for accessing ER/Studio data models. This distributable application offers the same sophisticated navigational features of ER/Studio to members of the modeling team that want advanced browsing and zooming capabilities but do not require the ability to edit the models." The reviewer is identified as "admin" and the review was posted on "06 March 2010 3:00:00 AM".

The right column is titled "Most Helpful Critical Review" and features a red 'X' icon. It shows a review with a rating of five stars and five thumbs up, and one thumbs down. The review text is identical to the favorable review: "An interactive environment for accessing ER/Studio data models. This distributable application offers the same sophisticated navigational features of ER/Studio to members of the modeling team that want advanced browsing and zooming capabilities but do not require the ability to edit the models." The reviewer is identified as "admin" and the review was posted on "06 March 2010 3:00:00 AM".

A "VS" icon is placed between the two review columns. At the bottom of each review column, there are links for "Read all reviews" and "Write a review".

On this pane you can see how other users have voted on the helpfulness of the review, thumbs up [👍] for a helpful review, and thumbs down [👎] for an unhelpful review. On this page you can also rate the reviews. You can also filter the reviews and sort them.

NOTE: The AppWave administrator has the option of monitoring the reviews. If reviews are being monitored you will not see any reviews not approved by the administrator.

- 4 To view all reviews, click **View All**.

Voice your opinion of a review

- 5 Click thumbs up [👍] to agree with the review or click thumbs down [👎] to disagree.

Write a review

6 Near the top of the channel page, click the **Write a Review** tab.

The **Write a Review** pane appears.



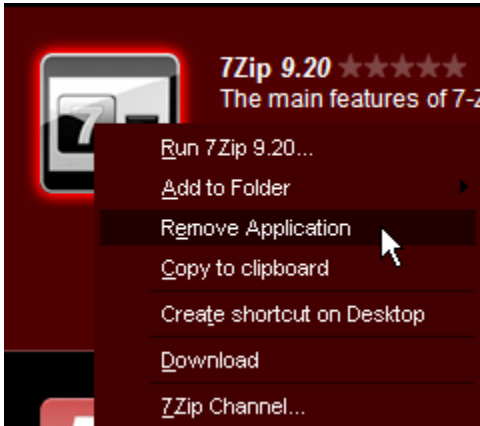
7 Complete the review page and then click **Submit Review**.

The Average Rating for the product will be adjusted if necessary and the review will be available for other users to read. You may have to wait until the Administrator authorizes the review before it will be posted.

REMOVING APPLICATIONS

You can remove broadcasted Apps that were downloaded or cached on your system in the local repository. You cannot remove an application that is currently running.

- 1 In the Application Window, locate the application you want to remove.
- 2 Right-click the applications and select **Remove Application**.



- 3 Confirm that you want to completely remove the local files of the application.

This removes the contents of the following directories:

Windows XP: C:\Documents and Settings\[username]\Local Settings\Application Data\Embarcadero\Product Repository\[AppName]

Windows 7 and Vista: C:\Users\[username]\AppData\Local\Embarcadero\Product Repository\StreamingCore\[AppName]

UNINSTALLING APPWAVE BROWSER

You should uninstall AppWave Browser before installing a new version. You can uninstall AppWave Browser using your standard operating system application removal utility; in Windows XP, this is the **Add or Remove Programs** utility in the **Control Panel**.

Index

A

Activity

- Cancel Streaming 26
- Controlling Downloading and Streaming 26
- Controlling Downloads 26
- Controlling Streaming 26
- Download Status 18

All-Access

- folder 18
- Licensed Products 18
- Membership 5

App Cache Size 10

AppBookmarks

- Adding 18
- Adding Favorites 18
- Favorite Applications 17

Application Channel

- Details 32
- Reviews 33
- Write a Review 34

Application Streaming 24

Application Window 18

Applications

- Downloading 24
- Reviewing 31
- Running 19
- Running standalone 24

AppWave

- Available Applications 17
- Backup License Server 24
- Connecting 7
- Connection Property 12
- Description 17
- Folders 18
- Logging in to 15
- New Applications 17
- Readiness 23
- Running Applications 24

AppWave Browser

- Apps tab 16
- Launching 7
- Studio tab 16
- Tabs 16

AppWave Login 12

AppWave Notifications

- Notifications Folder 28
- Subscribe to RSS Feed 28

Autodetect Network Proxy Settings 13

Average Rating 34

B

Bookmark

- Adding 18
- Delete Item 18

Bypass Proxy for Local Addresses 13

Bypass Proxy for Servers Starting With 13

C

Cache Folder 10

Censoring Reviews 33

Channel

- Reviews 33
- Write a Review 34

Clear Connection History 12

Configure Manually Proxy Settings 13

Connect to AppWave 11

Connect... 11

D

Do not check for Browser updates 9

Do not use Proxy 13

Download

- Activity 26
- Progress 25
- Status 18

Download Applications 24

Download Progress 26

Downloading

- Canceling 26
- Cancelling 26
- Pausing 26
- Resuming 26

F

Folder

- Removing 31
- Renaming 31

Folders

- Administrator Created 18
- Creating 19
- Organizing 30

H

Hide When Minimized 9

Host 13

I

Icons

- Application Window 19
- Interpreting 19

Internet Readiness 23

L

Latest Version 28

Launch at Startup 9

License 18

List/Grid View 18

Live Bookmarks 29

Local Readiness 23

Logging in 11

INDEX

M

- My Apps
 - Local Folder Organization 17
- My AppWave Name 10

N

- New Folder 30
- Notifications
 - Description 18
 - Folder 28
 - RSS News Feed 18
 - Subscribe with Live Bookmarks 29
 - Viewing in Browser 30

O

- Options 9

P

- Password 13
- Port 13
- Previous/Next Page 18
- Product ratings 31
- Proxy Server
 - Configuration Script 13
 - Host Name 13
 - Port Name 13
- Proxy Settings 12

R

- Readiness 23
- Remove Application 35
- Remove Folder 31
- Rename Folder 31
- Repository
 - Local 25
- Restore Defaults 10
- Reviews 31
 - Censoring 31
 - Moderating 31
 - Monitoring 33
 - Rating 32–33

- RSS feed 29

S

- Search Filter 18
- Search/Address Bar
 - Filtering 18
 - Syntax Supported 19
- Specifying a new AppWave connection 11
- Streaming
 - Cancelling 26
 - Pausing 26
 - Resuming 26

T

- Thumbs Down 33
- Thumbs Up 33
- Tools and Options
 - Configuring Options 9
 - Description 18
 - Import Apps 27
- Turbo Mode 10

U

- URI 19
- Use Authentication 13
- Use Internet Explorer Proxy Settings 13
- Use Proxy Configuration Script 13
- User Name 13
- User's Apps
 - My AppWave 17
 - Naming 17

V

- View Channel 32

W

- Windows Authentication 12
- Windows Login 12
- Write a Review 34