



Product Documentation

Embarcadero® AppWave™ Browser

Apps User Guide

Version 3.2.2
Published July 21, 2012

© 2012 Embarcadero Technologies, Inc. Embarcadero, the Embarcadero Technologies logos, and all other Embarcadero Technologies product or service names are trademarks or registered trademarks of Embarcadero Technologies, Inc. All other trademarks are property of their respective owners.

Embarcadero Technologies, Inc. is a leading provider of award-winning tools for application developers and database professionals so they can design systems right, build them faster and run them better, regardless of their platform or programming language. Ninety of the Fortune 100 and an active community of more than three million users worldwide rely on Embarcadero products to increase productivity, reduce costs, simplify change management and compliance and accelerate innovation. The company's flagship tools include: Embarcadero® Change Manager™, CodeGear™ RAD Studio, DBArtisan®, Delphi®, ER/Studio®, JBuilder® and Rapid SQL®. Founded in 1993, Embarcadero is headquartered in San Francisco, with offices located around the world. Embarcadero is online at www.embarcadero.com.

July 21, 2012

Contents

Welcome to AppWave Browser	5
About This Document	5
Introduction	5
Additional Product Information	6
Install and Set Up AppWave Browser	7
Downloading and Installing AppWave Browser	8
Connecting to AppWave on Your Network	9
Configuring AppWave Browser Options	11
Specifying AppWave Connection Properties	14
Use AppWave Browser Apps	17
Exploring AppWave	18
Logging in to AppWave	19
Using the AppWave Browser Interface	19
Understanding AppWave Apps	28
Launching Apps	29
Exploring AppWave Store	31
Creating Apps for Custom Applications	32
Downloading Apps	33
Using Apps Offline	35
Installing Products	36
Using Trial Licenses	36
Running Apps from the Windows Desktop	36
Keeping Your Apps Current	39
Organizing Your Apps in Folders	40
Reading and Writing App Reviews	41
Removing Apps	45
Uninstalling AppWave Browser	45
Index	47

CONTENTS

WELCOME TO APPWAVE BROWSER

This section has the following topics:

- [About This Document](#)
- [Introduction](#)
- [Additional Product Information](#)

ABOUT THIS DOCUMENT

This *AppWave Apps Browser User Guide* is the primary reference for the Apps tab of AppWave Browser. It provides an introduction to AppWave Browser and detailed instructions for common tasks.

NOTE: For the latest versions of AppWave documents and for information that will help you install and upgrade, see the Embarcadero documentation website. Always make sure to consult the README for late breaking updates at docs.embarcadero.com/products/appwave.

INTRODUCTION

Embarcadero All-Access is a comprehensive tool chest of award-winning, multi-platform Embarcadero products. All-Access lets you access a wide range of applications from a single launch point.

- **Architects** have access to design and modeling applications.
- **Developers** have access to a wide range of applications for developing, testing, and tuning code.
- **DBAs** can use applications to monitor, analyze, optimize, and manage database systems.

With Embarcadero All-Access you get:

- **AppWave:** Lets you centrally provision, manage and update your All-Access software and licenses inside your own firewall. You control what product versions are available to end users from the AppWave Browser. With network licensing, you can use the server to centrally control the list of authorized users, and what licenses they have access to.
- **AppWave Browser:** Provides a primary entry point to the various products used with All-Access, enables you to master your own apps through AppWave Studio and access the applications that you have mastered inhouse, and enables you to access the free apps in the Embarcadero AppWave Store. It allows you to launch, install, update, review and select product versions, all from a single user interface; and can be configured to run standalone, to receive products from Embarcadero, or to run with AppWave on your own network.

- **All-Access Membership:** Provides support, updates, upgrades, new products, and access to premium content on the Embarcadero Developer Network (EDN), plus Embarcadero Apps for click-and-run access to your applications without installation.
- **All-Access Pass:** A license key that unlocks all applications for a given All-Access level.

ADDITIONAL PRODUCT INFORMATION

The Embarcadero Web site provides access to information and resources useful through the life of your product. This includes access to:

- Technical Support
- Case studies, video presentations, webinars and white papers
- Product communities through the Embarcadero Developer Network
- Free trials of related products

See www.embarcadero.com/support:

INSTALL AND SET UP APPWAVE BROWSER

This section is comprised of the following topics:

- [Downloading and Installing AppWave Browser](#)
- [Connecting to AppWave on Your Network](#)
- [Configuring AppWave Browser Options](#)
- [Specifying AppWave Connection Properties](#)

DOWNLOADING AND INSTALLING APPWAVE BROWSER

You can access applications from AppWave using AppWave Browser. Follow these instructions, and substitute the correct values for the AppWave host name and port. Your administrator will provide this information to you.

NOTE: If you do not have administrator privileges to your system, ask your administrator to install AppWave Browser for you.

- 1 From a browser, connect to AppWave at:

`http://<serverhostname>:<portnumber>/aaserver`

embarcadero ADMIN Help

appwave™
Bring your desktop into the 21st century
With appwave, software moves as quickly as you do.

Get the AppWave Browser

Get the latest version of the AppWave Browser for Windows (English version)

Please note: To install the AppWave Browser, administrative privileges are required to the Windows operating system you are installing to. During startup you may be required to provide the following AppWave address:

app://ETT0TC20.embarcadero.com:80

Install **Browse Catalog**

AppWave\Browser-V3_Suite-28-20120229

AppWave Resources

Experience all the latest resources for AppWave:

- Marketing materials, video tutorials and developer resources:
www.embarcadero.com/products/appwave
- Documentation for End-users, Authors and Administrators:
docs.embarcadero.com/products/appwave

Embarcadero AppWave V3_2_2-build.34 AppWave notifications © Copyright 2012 Embarcadero Technologies, Inc., All Rights Reserved

- 2 The AppWave **HOME** page lists the AppWave Browser. Click **Install**.
- 3 Save the AppWave Browser executable to disk; the download location depends on your browser setting.

- 4 When the download is complete, run the installer or download manager if you are downloading AppWave Browser from the AppWave Store, <http://windowsapps.com>.
- 5 Accept the End User License Agreement.

AppWave Browser attempts to connect to the private AppWave from which it was downloaded using your Windows credentials or to the AppWave Store.

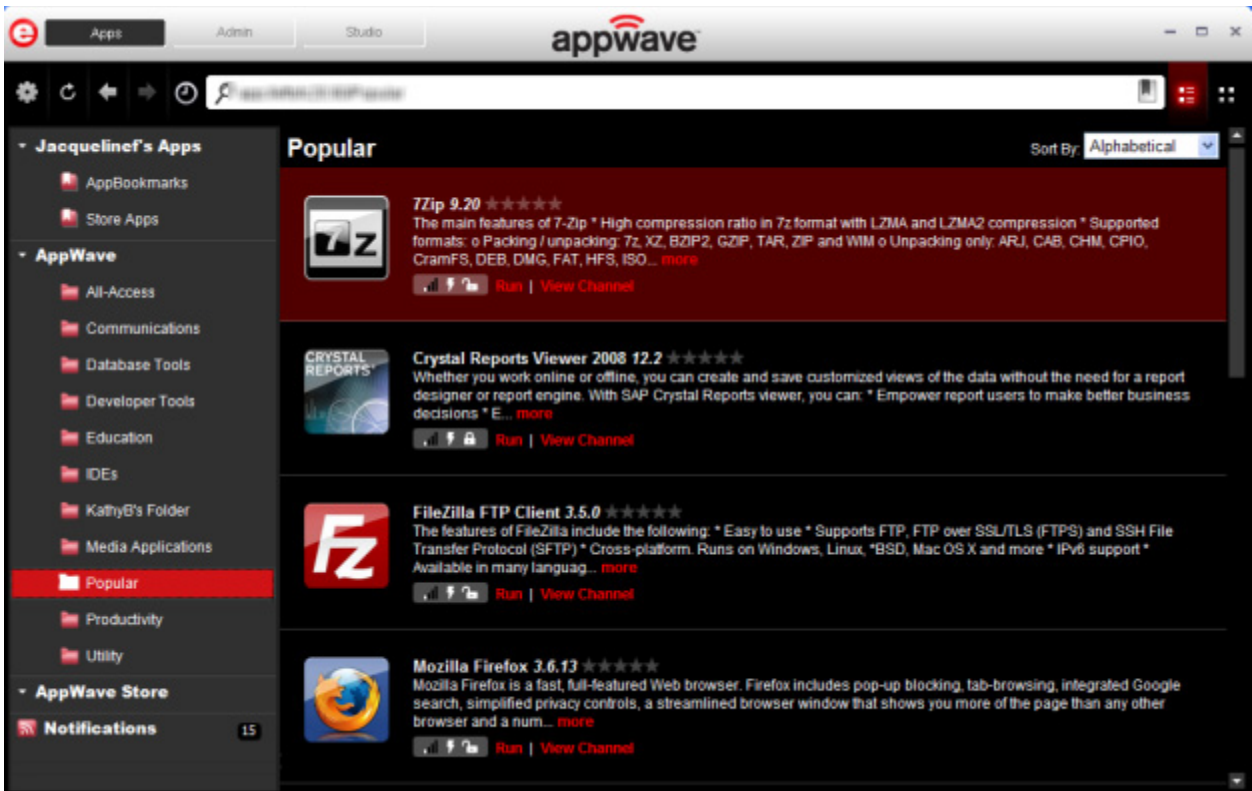
CONNECTING TO APPWAVE ON YOUR NETWORK

To connect to AppWave on your network, you must first connect to AppWave via a Web browser and download AppWave Browser. AppWave handles the licensing, and you can immediately begin using the applications that are available on AppWave and your administrator has permitted you to use. AppWave Browser is configured to connect to the AppWave from which the Browser was downloaded.

To launch AppWave Browser, double-click the AppWave Browser executable.

NOTE: If the administrator has not already configured your user ID to allow you to access the applications in AppWave, you will either see an information dialog advising you to contact your administrator or a user account will be created automatically for you.

AppWave Browser launches. You are automatically connected to your private AppWave, the AppWave from which you downloaded the AppWave Browser application. Any applications the administrator has granted you access to are shown in the AppWave Browser product window



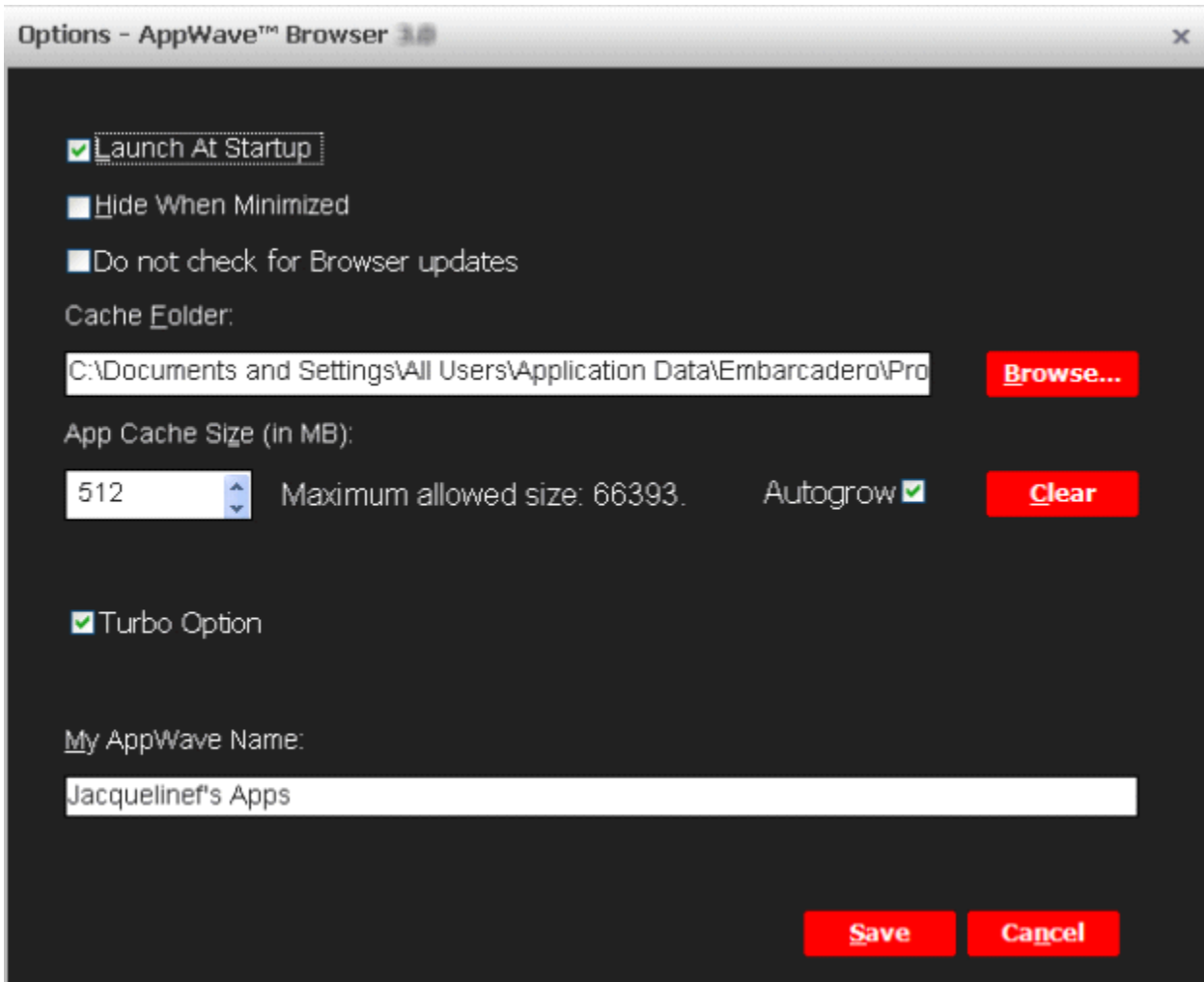
If your Windows user account has administrative privileges, AppWave Browser automatically runs in Turbo Mode, where a small piece of software is added to your operating system which enables AppWave Browser to run faster. Turbo Mode is recommended for optimal performance. For more information, see [Configuring AppWave Browser Options](#). If you do not have administrative privileges, in order to run in Turbo Mode, ask your administrator to install AppWave Browser for you.

CONFIGURING APPWAVE BROWSER OPTIONS

AppWave Browser options allow you to configure AppWave Browser behaviors including launching, download folder location, and proxy and AppWave server specifics.

- 1 Click the **Tools and Options** icon [] and choose **Options....**

The **Options** dialog appears.



- 2 Specify your preferences and then click **Save**.

The following describes the options available.

Launch At Startup: Starts AppWave Browser when you log into Windows. When selected this option also loads a small piece of your downloaded apps to enable file associations with the apps. For example, you could double-click a .docx file and the Microsoft Word app would launch, or you could right-click the .docx file and select Print and the Microsoft Word app would launch and start printing the document. Exiting from AppWave Browser removes the file associations. Removing a downloaded app in AppWave Browser also removes the file associations for that app.

Hide When Minimized: Hides AppWave Browser when you click the minimize button, otherwise AppWave Browser window is reduced to the size used when it was last minimized. When AppWave Browser is minimized it can be brought to the forefront by clicking the AppWave Browser applet in the system tray.

Do not check for Browser updates: Does not check for updates for the AppWave Browser application when the Browser starts up. If you are running in Turbo mode and update the Browser, you will need to restart your system.

Do not display OS compatibility warnings: Controls the behavior if warnings are given when running Apps marked as incompatible during the authoring process. If turned off, no warnings will be given to the user whether the app is supported or not.

Cache Folder: Browse to the folder where you want your downloads to be stored. This is for your Product Repository to which the app is streamed when you run it. This may be located on a local or shared network disk. If you decide to change the location of the cache folder after downloading apps, depending on the size of the apps, it may take approximately one minute for every seven apps downloaded. For information on downloading applications, see [Downloading Apps](#).

App Cache Size: Amount of disk space to set aside as cache for use with streamed applications. A larger cache can increase the speed at which an App responds and can increase performance when running multiple Apps simultaneously.

Autogrow: Select to enable the amount of disk space for the cache that's available to increase as you launch more apps or as the apps you are running require cache space. If you have Autogrow selected, you won't need to remove apps and clear the cache to increase the size of the cache.

Clear: Click to remove app details from the cache such as default settings for the app, for example the default document to open. In order to clear the cache you need to close all apps first. You may want to use this option if you try to run an app and it won't launch because there isn't enough disk space allocated to the cache. Clearing the cache may remove file associations for apps until you launch the relevant app again. If you have Autogrow selected, you won't need to clear the cache.

Turbo Option: We recommend that you enable Turbo mode because it provides improved performance and better support for more applications. Some applications will not run when Turbo is not enabled. Requires Administrative privileges for the computer on which you are running AppWave Browser. If the Turbo Option is enabled, when you run AppWave Browser, a file system driver is installed which allows AppWave to communicate with your hardware and operating system at a much lower level. AppWave Browser and the AppWave applications you run while Turbo is enabled will run faster because of the installation of the file system driver. By default, AppWave Browser runs in this mode if you installed the Browser using a Windows account that has administrative privileges.

NOTE: File associations do not work when Turbo mode is disabled. You will not be able to right-click a file in Windows Explorer and choose to open it with an app and double-clicking an app-associated file will not launch the app.

When Turbo is not enabled, AppWave Browser does not require Administrative privileges. This is a zero-install mode for locked-down desktops where your operating system user

permissions do not allow you to install drivers. Performance is only slightly less than that provided in Turbo mode.

To change the Turbo mode setting, you need administrative privileges for the computer you are running AppWave Browser on. If necessary, ask your administrator to reinstall AppWave Browser for all users on your machine. This will enable Turbo mode.

If you change the Turbo option setting, your computer will need to be restarted before the change takes effect.

Some applications will not run with Turbo mode disabled. If this is the case, the app will display an error such as "This application will not run on this operating system in Non-Turbo Mode." or "This application will not run on [operating system]. Please try another application."

My AppWave Name: This is the name of your local repository where your bookmarks and folders you create appear.

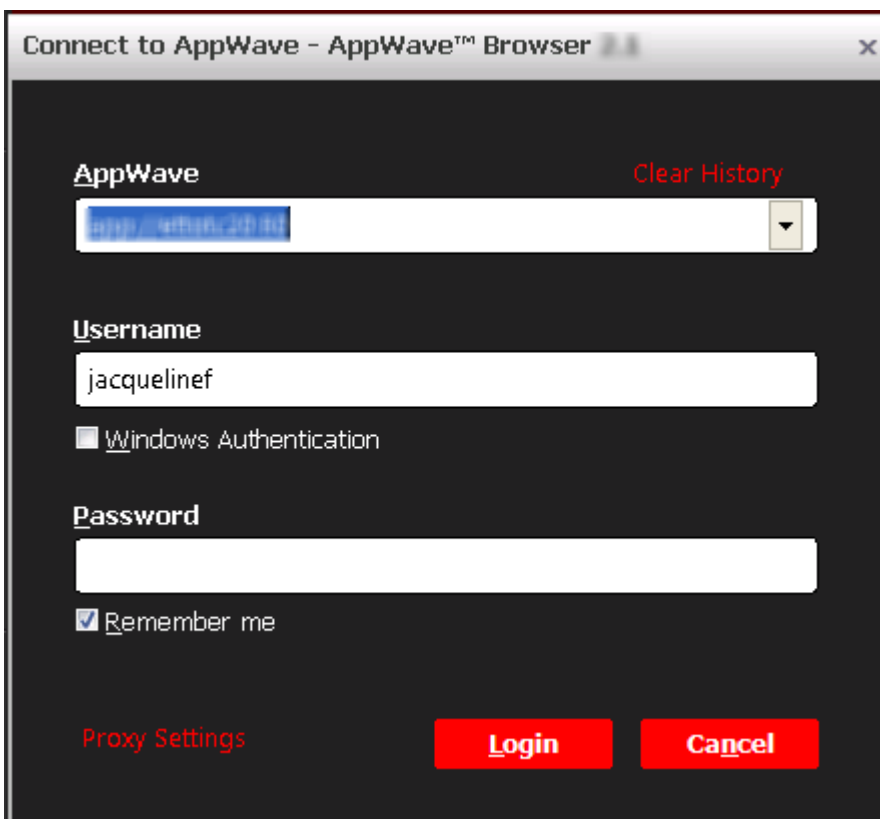
Restore Defaults: Click to restore the AppWave Browser options to their original configuration.

SPECIFYING APPWAVE CONNECTION PROPERTIES

When you download AppWave Browser from AppWave home page, included in the AppWave Browser is information about how to connect to that AppWave. If AppWave accepts your Windows credentials to log in to AppWave, then when you start AppWave Browser you should automatically connect to your home AppWave. If you need to connect using another login name and password, connect to a different AppWave or connect to AppWave via a proxy server, follow the directions below.

- 1 Click the **Tools and Options** icon  and select **Connect...**

The **Connect to AppWave** dialog appears.



- 2 Specify your connection properties and then click **Login**.
- 3 If you use a proxy server to connect to the internet, click **Proxy Settings** and configure the proxy server.

The Proxy Settings dialog appears

The following describes the connection properties you can specify:

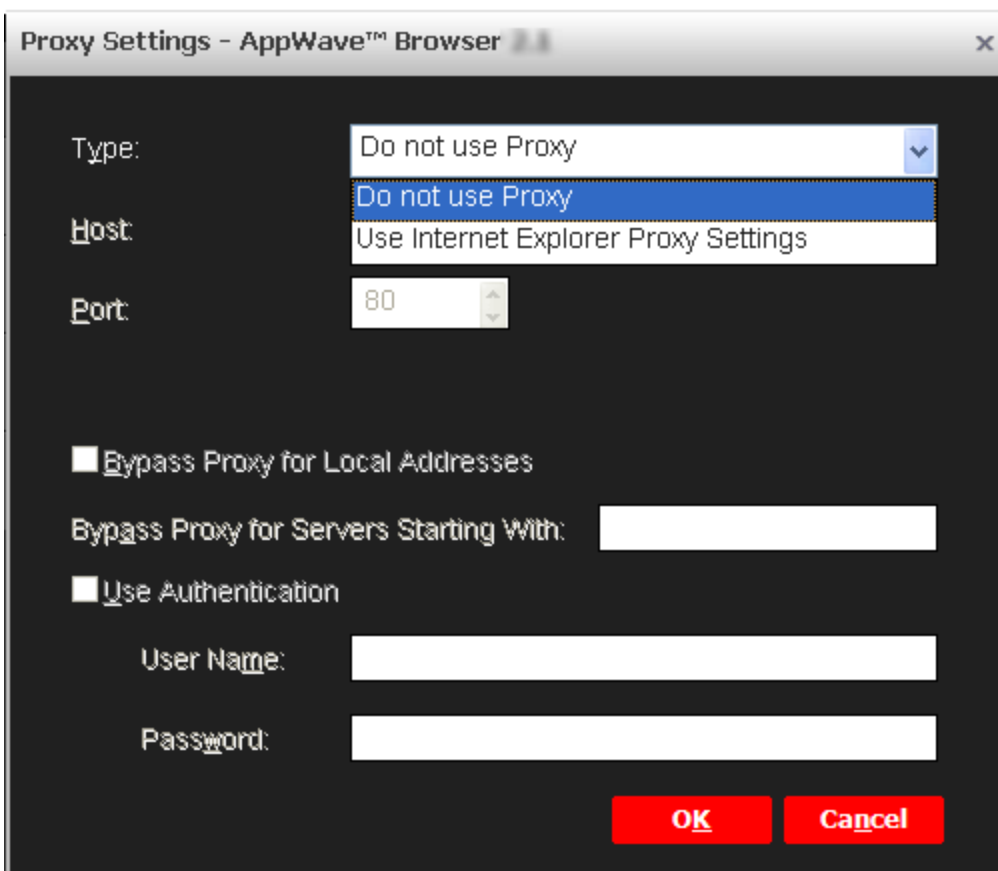
AppWave: The IP address or host name of the AppWave you want to connect to.

Username/Password: Specify your AppWave account user name and password. This may be different from your Windows user name and password. AppWave Login accounts are created locally by the administrator on AppWave.

Windows Authentication: Using this login allows you to use your Windows user name and password to log in to AppWave. This functionality is used in an LDAP environment where AppWave and the LDAP server are synchronized. When this option is deselected, you can use another user's computer who is running AppWave Browser, and then use your domain ID and password to log in to Windows and then into AppWave.

Clear History: Deletes information about AppWave connections you have made in the past.

Proxy Settings...: Click to describe the proxy server you use to connect to the Internet. AppWave Browser needs to connect to the Internet to access AppWave.



- **Type:** Select a proxy configuration type.
 - **Do not use Proxy:** When selected, AppWave Browser uses a direct connection to the Internet to communicate with AppWave.
 - **Use Internet Explorer Proxy Settings:** Use whatever settings Internet Explorer has been set to use. These are the settings specified in Internet Explorer [Tools\Internet Options\Connections\LAN settings] or [the Internet Options applet of the Windows Control Panel [Start\Settings\Control Panel\Internet Options\Connections\LAN settings].

- **Host:** Host name of the Proxy server.
- **Port:** Communication port of the Proxy server.
- **Bypass Proxy for Local Addresses:** If selected, does not use proxy server to connect to AppWave systems on your intranet. If you have a proxy server configured all your internet activity goes through the proxy server. Selecting this option allows you to directly connect to an AppWave on your intranet, bypassing the proxy server.
- **Bypass Proxy for Servers Starting With:** For AppWave addresses you want to connect to directly, specify the first few characters of the AppWave hostname or IP address, using either the host name or IP address. The format specified here must agree with the format used in the AppWave field to specify the AppWave address.
- **Use Authentication:** Select if connecting to your Proxy server requires user authentication.
 - **User Name:** User account name for authentication on the Proxy server.
 - **Password:** Password for the Proxy user account.

USE APPWAVE BROWSER APPS

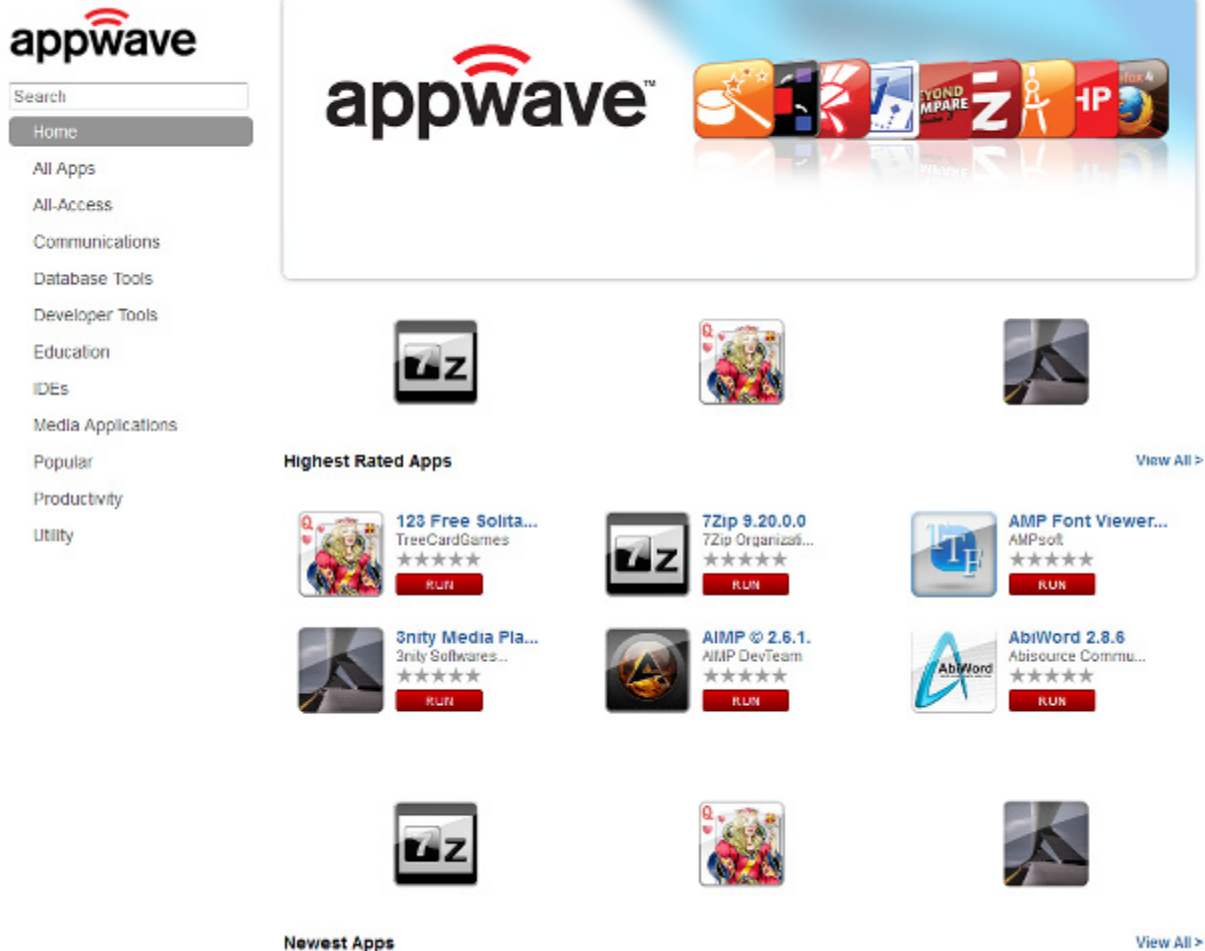
This section covers the following topics to help you understand and effectively use the AppWave Browser Apps tab:

- [Exploring AppWave](#)
- [Logging in to AppWave](#)
- [Using the AppWave Browser Interface](#)
- [Understanding AppWave Apps](#)
- [Launching Apps](#)
- [Exploring AppWave Store](#)
- [Creating Apps for Custom Applications](#)
- [Downloading Apps](#)
- [Using Apps Offline](#)
- [Installing Products](#)
- [Using Trial Licenses](#)
- [Running Apps from the Windows Desktop](#)
- [Keeping Your Apps Current](#)
- [Organizing Your Apps in Folders](#)
- [Reading and Writing App Reviews](#)
- [Removing Apps](#)
- [Uninstalling AppWave Browser](#)

NOTE: For information on using the Studio and Admin tabs of the AppWave Browser, see the *AppWave Studio User Guide* and the *AppWave Administrator Guide* respectively.

EXPLORING APPWAVE

Once you have installed AppWave Browser, from the AppWave home page, you can now click **Browse Catalog** to view the apps available to you on your Private AppWave.



You must provide your user credentials, as specified by your administrator, in order to browse the Private AppWave Catalog.

When connected to the internet, you can also see the free apps available on the Embarcadero public apps store, windowsapps.com.

From the private AppWave catalog, you can browse for applications, view app details, and run apps.



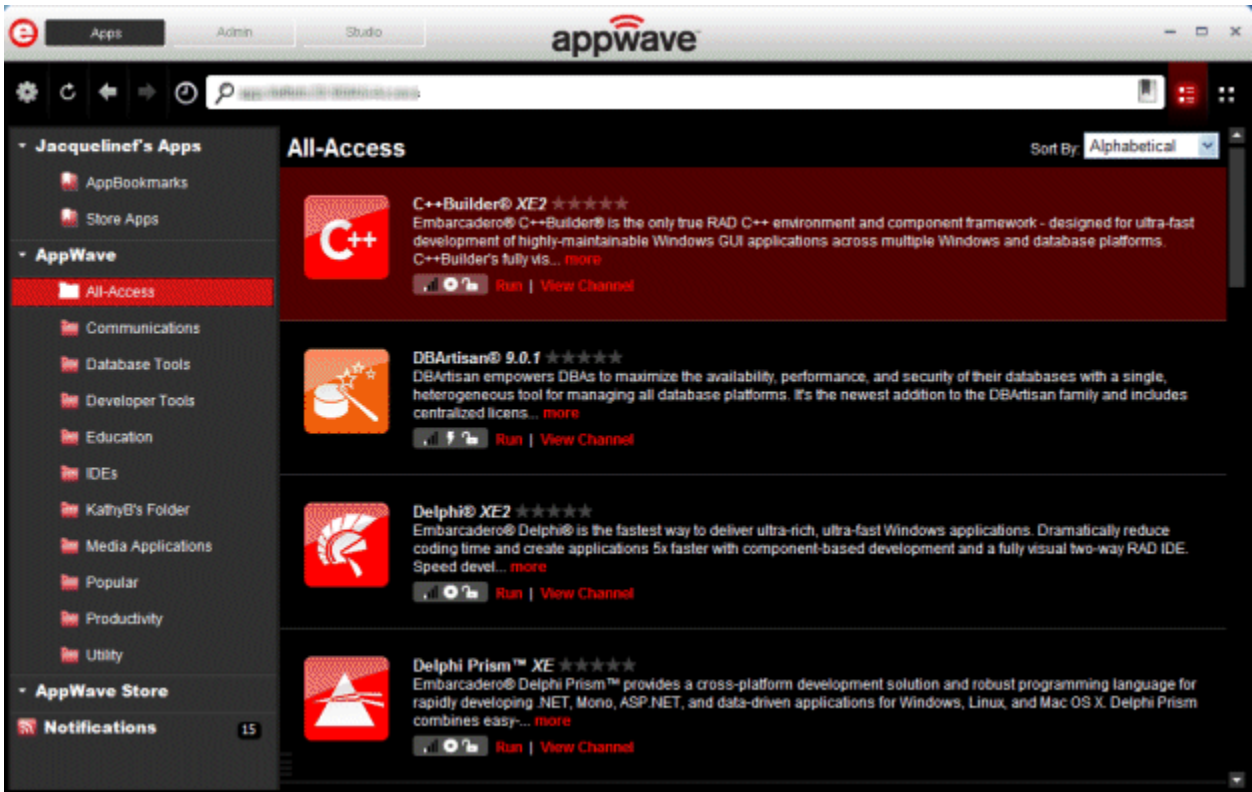
LOGGING IN TO APPWAVE

When you launch AppWave Browser, AppWave Browser passes your Windows login name and password to your AppWave for authentication. This is the AppWave from which you downloaded the AppWave Browser executable. Depending on how your AppWave is configured, if a user account does not exist for that login name and password, AppWave Browser may prompt you to create a user account. If you choose to, an account will be created for you and you will be assigned to the All Users configuration, which may mean that your access to products and features is limited. Contact the AppWave administrator to create an account for you with the product and feature access that you require.

USING THE APPWAVE BROWSER INTERFACE

The tabs you see and the functions you have access to are determined by the permissions granted to your account by the AppWave administrator. You will not see the Studio or Admin tabs unless the administrator has given you permission. You will see only the Apps tab.

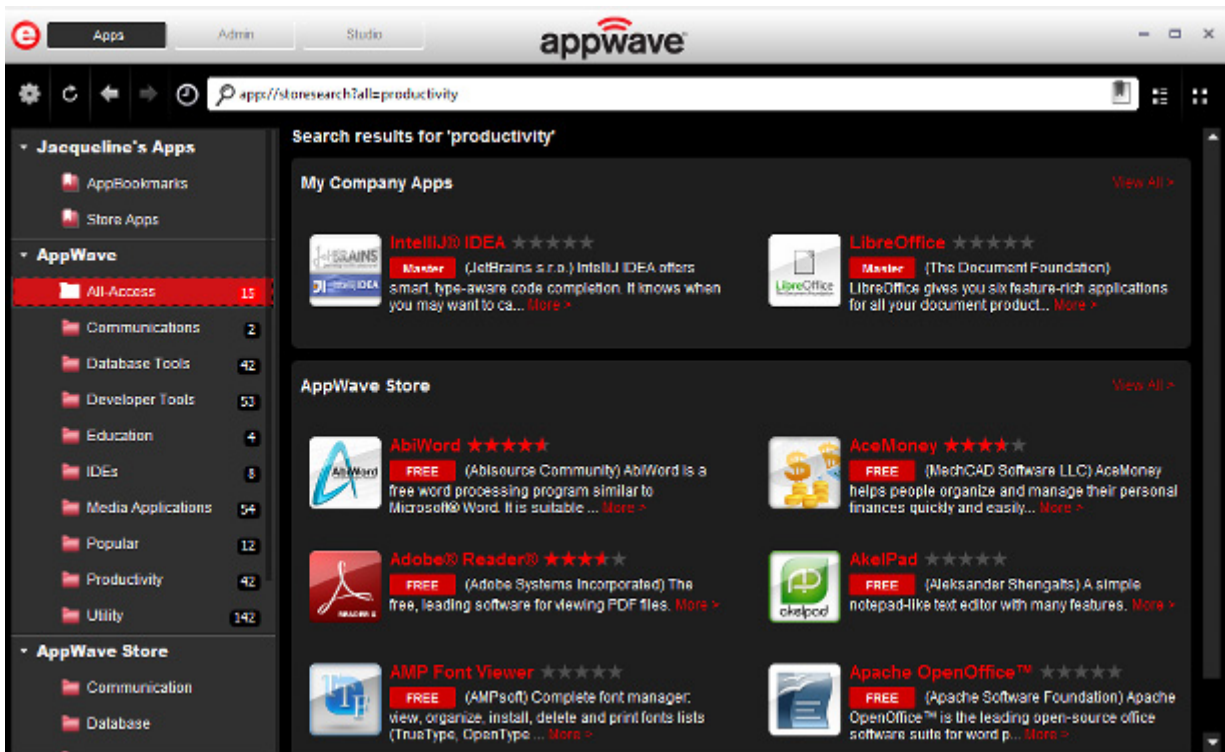
The following image shows the user interface to the Private AppWave.



The next image shows the user interface to the AppWave Store when you have internet connection.



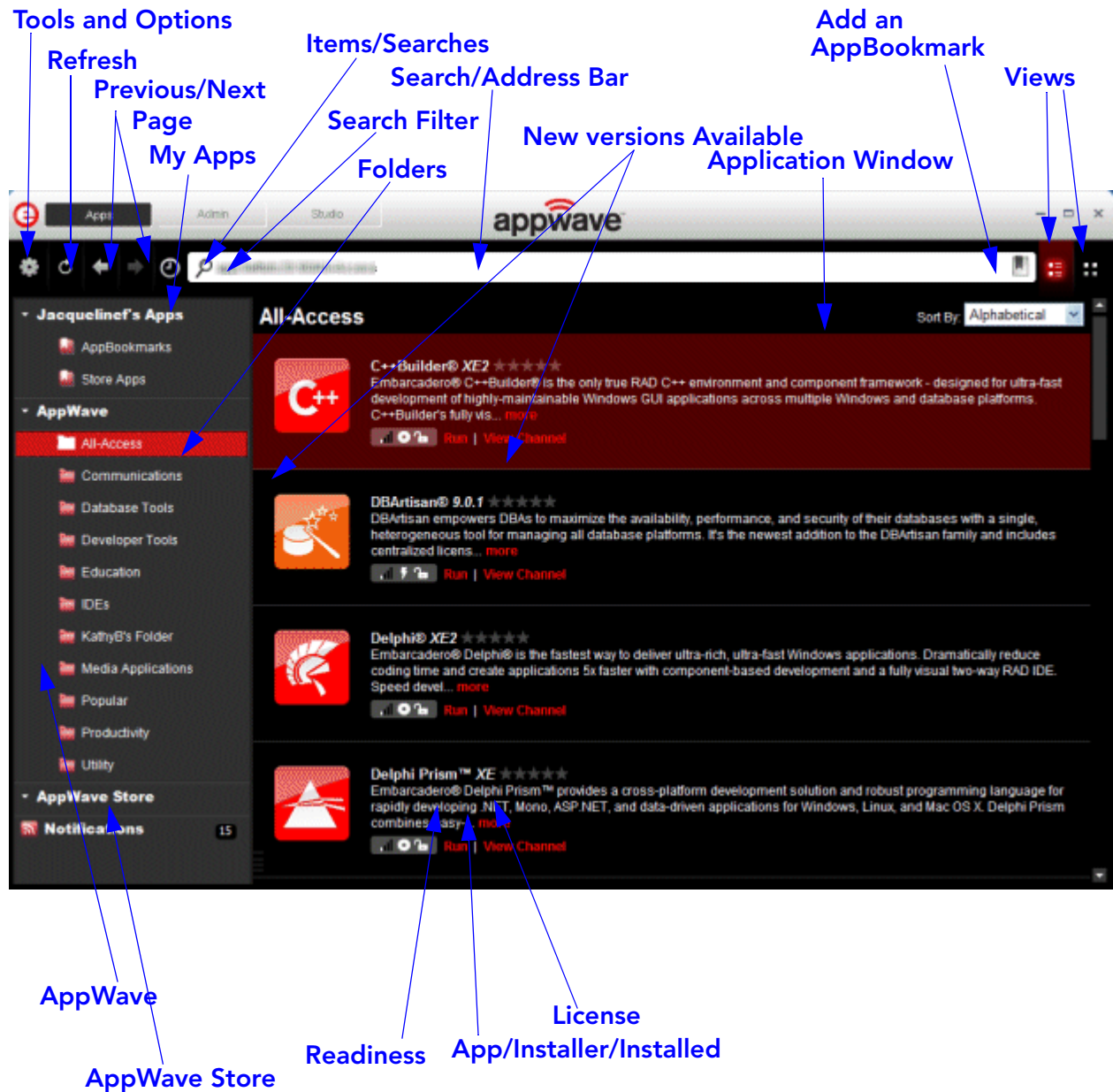
When you search for an app, your app window will resemble the following image.



For information on the AppWave Studio tab, see the *AppWave Studio User Guide*.

For information on the AppWave Admin tab, see the *AppWave Administrator Guide*.

The following describes the main interface components of the Apps tab of AppWave Browser and their usage.



User's Apps: Use *My Apps* to organize applications you use. You can provide a name for User's Apps in the AppWave Browser Options; select **Tools and Options > Options > My AppWave Name**. The default name is your operating system name. In User's Apps, you can create folders to organize bookmarks to the applications you use and use the AppBookmarks folder which contains bookmarks of applications you have marked as being a favorite application.

- **AppBookmarks:** Contains shortcuts to apps that you have downloaded and bookmarked. Helps you easily find your favorite apps.

NOTE: Removing a bookmark also removes the cached app from your local repository.

- **Store Apps:** Contains shortcuts to apps that you have run in the AppWave Store.

AppWave: Displays all the applications available to you on AppWave. These can include Embarcadero applications, third-party applications Embarcadero supports, and also Apps mastered by your company through AppWave Studio and broadcasted from AppWave. When new applications become available you will receive a notification in your system tray. You can then check the Notifications to see what's new on AppWave.

All-Access: Shows all the applications licensed to your company through the Embarcadero AppWave Store.

AppWave Store: Connects you to the Embarcadero public AppWave Store from where you can search through, run, and read and write reviews for hundreds of free apps.

AppWave Folders: These are folders your administrator created, named, and assigned to specific users or to all users. They contain applications to which your administrator is granting you access. These applications are automatically broadcasted to your AppWave Browser.

Notifications: These messages come from AppWave. The AppWave administrator configures what types of messages are sent out as notifications. Notification messages can include new product or version availability, downloads complete, and download errors. You can also subscribe to an RSS news feed of notifications from the AppWave Home page of the AppWave console application.

Items/Searches: Click to select from a list of items previously selected or searches previously run, or to clear previous items or searches.

Search Filter: Click to choose an application attribute by which to limit the search. The search will look for matches for the specified search string only in the text of that application attribute.

Application Window: Shows a list of applications. The list that appears depends on what is selected in User's Apps, AppWave, or entered in the Search Bar. Your administrator can set AppWave to automatically cache apps in your repository when you launch AppWave Browser and connect to the private AppWave.

Tools and Options: Click the gear icon to download, configure, import and launch applications; create folders, and master AppWave Apps; and connect to and configure the AppWave you connect to. The options available depend on what is selected in *My Apps*, what is selected in the AppWave menus, and user permissions.

Refresh: Click to see everything that is new since the last auto refresh or reconnect; this includes updates to the following:

- **App ratings and reviews:** such as when a new review was added, rejected or removed.
- **License permissions:** such as when the admin has assigned a new license to the user or denied a license for the user
- **Applications,** such as when a new application was added or removed.

- **Folders:** such as when the user has been assigned a new folder or an already assigned folder was removed.
- **User permissions.** such as when the admin grants authoring permission to the user enabling the user to use AppWave Studio.
- **New Versions Available,** such as when a new version of an application was added.

AppWave Browser is automatically refreshed every five minutes.

Previous/Next Page: If you change the contents of the Application Window, by searching and filtering, you can switch back to a previous view and then return to the previously most recent view by clicking these buttons.

Add an AppBookmark: Select an App in the Application Window and then click this button to add a shortcut to the selected App to the AppBookmarks folder in *My Apps*. You can later delete the bookmark by right-clicking it and selecting **Delete Item**.

NOTE: Deleting a bookmark also removes the cached app from your repository.

Details View/Tile View: Switch between a list of application names and related information or detailed panels that include a description of the application and review ratings.

Icons in Application Window: In addition to displaying the product logo in the application window, the icons at the bottom right of the logo convey the following information.



AppWave App: Apps that can be broadcasted to your desktop or in the case of installer-based Apps, designates that the App has been installed.



Template: App mastering templates allow you to master that application in AppWave Studio, if you have the required permissions. For more information, see the *AppWave Studio User Guide*.



Installer/Internet Ready: App installers that you can download and run. This also designates Apps that are Internet ready and must be cached on AppWave before you can run them.



Readiness: Indicates whether the App is local to your hard disk, available on AppWave or available on the AppWave Store.

- One bar indicates that the App is available on the Embarcadero AppWave Store but not yet cached on your AppWave; readiness is Internet. Depending on how your Administrator has configured AppWave, you may or may not be able to initiate caching. Contact your administrator if you cannot initiate caching.
- Two bars indicates that the App is cached on your AppWave; readiness is AppWave.
- Four bars indicates that the App has been broadcasted to your system or in the case of installer-based Apps, that the App has been installed.



License: Indicates whether or not the application has been licensed. The unlocked padlock means that all licensing details have been configured and you can run this application. The locked padlock means that there are some licenses that your AppWave administrator needs to add or configure before you can run this application.



Displays the number of new versions of this product available. Hover your mouse over the number to see a brief description of the newly available product.

Folders: Folders can be created by the AppWave Browser user, in which case the folder appears in *My Apps*, or the folder can be created by the AppWave Administrator, in which case it appears in the AppWave menu. The number to the right of the folder name indicates the number of new versions available.

Run: Click to run the application.

View Channel: Click to view application details and versions, and read, write, and rate application reviews.

Search/Address Bar: Enter the first few letters to limit the applications shown in the Application Window to only those matching those letters. Enter the full name of the application to display that application directly. You can also enter a search word, such as productivity to find all the applications whose titles or details contain that word. Reviews are not searched. Click a product or folder and the address of that item appears. When you've found the application you're looking for, you can copy the address and share it with a colleague who, if connected to the same AppWave, can use the address to directly display the search matches in the application window. In the search/address bar you can also enter the URI of an AppWave you want to connect to.

The following are supported in the search bar:

- Search for one or more words (string).
- Use double quotes (" ") around strings to find only matches containing the strings in the given order.
- Use the asterisk symbol (*) to fill in the blanks. For example, "database * tool" returns "database management tool" and "database optimization tool".
- Use the OR operator to find matches containing any string specified in the query. For example, database OR tools returns all matches with either "database" or with "tools".
- Use the & operator to find matches containing more than one string. For example, database & tools returns only matches containing both "database" and "tools".

You can further limit the matches found by your search criteria by being more specific and manually entering the search url parameters in the address bar. The general format of the Search URL is

```
app:// [location] / [URI] / [command [?params] ]
```

where

location is a required parameter and has the format of

```
appwave_address [/folder_like_structure]
```

Location can also be specified so all available locations are searched, such as

```
app://search?all=database and management
```

where all locations are searched for the keywords database and management

Location URL examples:

- `app://10.40.125:80/All-Access`, the search is performed on AppWave at the specified address in the All-Access folder.
- `app://localhost:80/AppBookmarks`, the search is performed on the local AppWave in the AppBookmarks folder.
- `app://local/AppBookmarks`, the search is performed on the local machine in the favorites directory. The search can focus on any directory you created on your User's folder, that is `app://local/AppBookmarks`.

URI is a list of application attributes in a path-like structure in the following order:

```
<application name>/ [<language>/ [<version>/>/ [<edition>/ [<launch type>
 [<license>/ [<license type]]]]]]
```

The order of the URI attributes is very strict and a space must be specified if you want to omit an attribute.

URI examples

- `app://local/AppBookmarks/3rdRail`, the search is performed on the local machine in the AppBookmarks folder, for any applications matching 3rdRail.

command is a command that allows you to perform an action on the application matches, such as search, details, launch, and import. When `command` is not present, AppWave Browser tries to navigate to the URL and display the contents of the item designated by the URL or all the matching applications if the search string contains application attributes (URI).

- **search** finds an application and displays it in the application window.

Examples:

```
app://search?all="database management", searches and displays all applications
whose description contains "database management".
```

```
app://localhost:80/All-Access/
search?language=english&version=2.0&all=App&license=platinum, the search is
performed on the local AppWave in the All-Access folder, for any applications matching
English language, version 2.0, broadcasted Launch Type, All-Access Platinum License.
```

- **details** displays the application details page.

Examples:

```
app://localhost:80/3rdRail/details?page=Home
```

```
app://localhost:80/Notepad++/details?page=Reviews
```

The `details` command has one parameter that indicates the page to display when looking at details and can have following values: Home and Reviews

- **launch** starts an application.

Example:

```
app://localhost:80/Embarcadero DB Optimizer/ENGLISH/2.5.1/XE Pro/App//
Concurrent/launch
```

To pass command-line arguments when launching an application, this URL must contain the parameters as follows:

```
app://localhost:80/Embarcadero DB Optimizer/ENGLISH/2.5.1/XE Pro/App//
Concurrent/launch?%1=arg1&arg2=value
```

UNDERSTANDING APPWAVE APPS

In addition to the standard installation executables for AppWave applications, Embarcadero provides AppWave Apps versions of each product. Through the Embarcadero AppWave Store you also have access to many free apps from other parties. Apps simplify deployment and enable side-by-side versioning. When AppWave Browser is not running in Turbo mode, such as in a locked-down desktop environment, Apps are ideal because they do not affect system files or system registry settings.

AppWave Apps run within their own space without sharing DLLs or system-wide settings that could conflict with other applications. Application data, including configuration and license information, is stored locally on the hard disk, separate from the executable itself. AppWave Apps run on the local machine and are launched from the network using AppWave Browser.

AppWave Apps are provisioned and licensed by AppWave (leveraging the Embarcadero License Center which is integrated) and then accessed using AppWave Browser. AppWave obtains software updates from the AppWave Store and makes them available to the AppWave Browser user.

Using Apps on a shared AppWave avoids the need to keep multiple machines updated with new versions. By keeping the AppWave versions up to date, you will automatically gain access to the latest versions of the products.

Apps launched from AppWave Browser benefit from application streaming because the application will begin to open before the product has been fully downloaded. However, if you need frequent access to an application, you should download and run the file locally, which is typically faster than running it from AppWave.

Limitations of Application Virtualization

Some apps in AppWave will perform automatic updates from vendor websites. Such in-app auto-updates will generally not work in a virtualized app. Should such an auto-update happen when running an app from AppWave, AppWave Browser users should cancel the update operation as it is likely to fail. Similarly, users should not select menu items within an app that aims to update from vendor website. The solution is to apply updates for existing apps once for all users via the mastering process using AppWave Studio. The most recent versions of Embarcadero XE apps are always available on the AppWave Store and are made available to Embarcadero users with maintenance contracts. Embarcadero also updates third party apps on the AppWave Store regularly.

See Also

[Launching Apps](#)

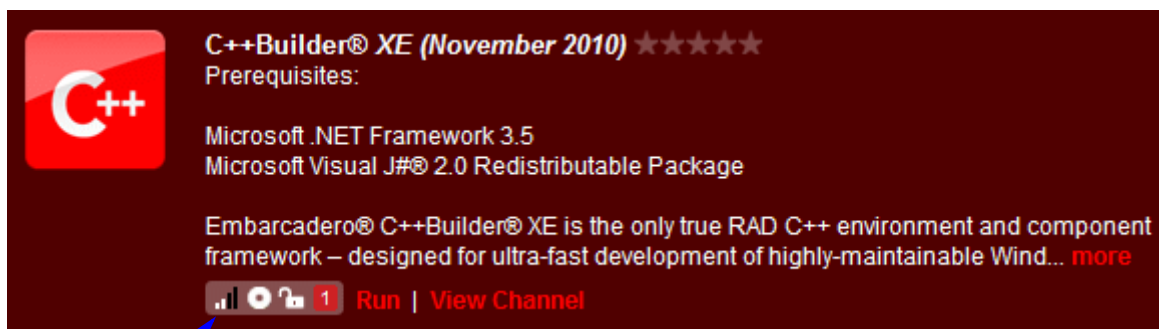
[Downloading Apps](#)

LAUNCHING APPS

AppWave Apps may be applications that are mastered into a single file that runs without installation or they may be installers. The application runs on the desktop, locally and under 'full power' but does not change system areas of the OS or registry. Apps run within their own space, with no shared DLLs or other system-wide settings that could conflict with other applications. Application data, including settings and licenses are stored locally on the hard drive separate from the executable.

The size of the application cache, set in the AppWave Browser options, can affect how efficiently the Apps run. If the entire App fits into the cache, it will run faster. If you are running multiple Apps simultaneously, a large cache can also be beneficial. For information on setting the cache, see [Configuring AppWave Browser Options](#).

- 1 Select the folder or AppWave containing the application you want to run.
- 2 In the application window, locate the App you want to run by scrolling through the list, or by using the Search Bar. For more information, see the "Search" section of [Using the AppWave Browser Interface](#).



Readiness

Notice the Readiness status. The status can be one of the following

- **Internet:** The application is available on the AppWave Store but has not yet been downloaded to your AppWave. Depending on your privileges, when you click Launch for an Internet-available application, the application download from the AppWave Store to your AppWave will be initiated. Otherwise, see your AppWave Administrator to obtain the product. For this status, there will be only one bar displayed by the Readiness icon.
- **AppWave:** The application has been downloaded from the AppWave Store and is available on your AppWave. For this status, there will be two bars displayed by the Readiness icon.
- **Local:** The application is available on your local system. It has been streamed to your local computer. For this status, there will be four bars displayed by the Readiness icon.

- 3 Click the **Run** button of the AppWave App or double-click the app.

The app launches. The app will run a little faster if it has first been downloaded to your local disk. For information on downloading applications, see [Downloading Apps](#).

- 4 Accept the end user license agreement.

NOTE: For free apps, you will be asked for your Embarcadero Developer Network (EDN) credentials. You can create an EDN account at edn.embarcadero.com.

See Also

[Understanding AppWave Apps](#)

EXPLORING APPWAVE STORE

If you have an internet connection, AppWave Browser can connect to the Embarcadero AppWave Store where you can find many free apps and trial versions of apps that may be useful to you in your work or just plain fun to play with.

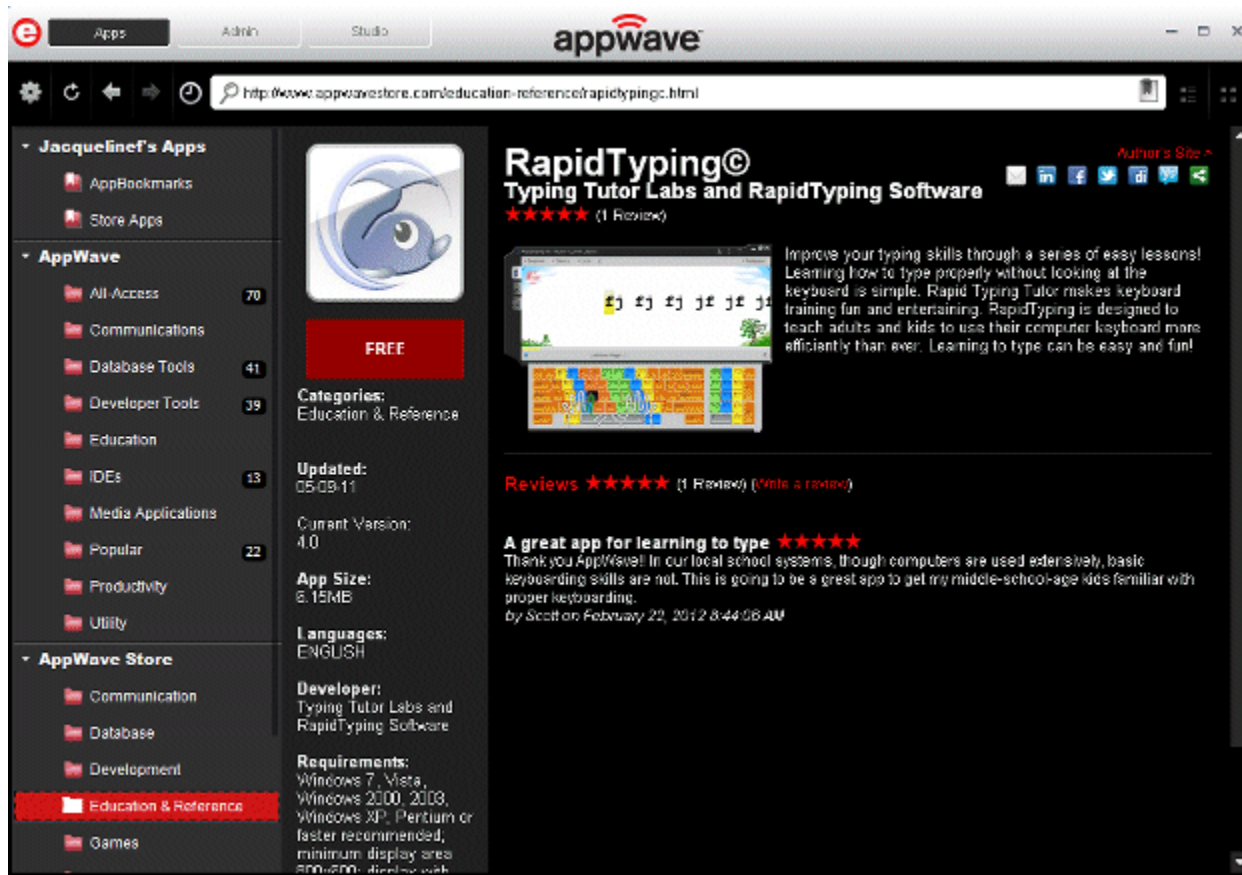
On the left side of AppWave Browser, click **AppWave Store**.



To scroll through the products, click the scroll bar.

To run the app, click its icon. After you sign in to the AppWave Store, the app launches.

For a detailed description of the app, click the app icon.



On the App page of AppWave Store you can read and write reviews, click a link to the app producer's Web site or share app info on your Facebook wall or other social media sites.

For more information about the AppWave Store, see the *AppWave Store Quick Start Guide*.

CREATING APPS FOR CUSTOM APPLICATIONS

For information about using the **New AppWave Custom App** command, the Studio tab or launching a mastering session by double-clicking a template in the Application Window, see the *AppWave Studio User Guide*.

DOWNLOADING APPS

You may want to download an app for the following reasons:

- You want to run the application on a machine that does not have access to AppWave. In this case, you can download the installer on a machine that has access to AppWave, copy the installer to the machine with no AppWave access, and then run it on the other machine. You may need a license key to run the application.
- You want to install the application at another time. In this case you can download the installer and then run it later. For large applications, the installation will be much faster if the installer is first copied locally.
- Your environment includes a backup AppWave license server and you want to be able to run your applications when AppWave is unavailable but you can access the backup license server.
- You want to run the application when you are not connected to AppWave, that is for offline usage.
- You are setting up your work environment and want to download the app so it will run faster when you need it.
- This is a frequently used app that will launch faster if downloaded. Also, file associations for downloaded apps will be enabled when AppWave Browser starts. This enables you to, for example, double-click a .docx file and automatically launch the Microsoft Word app.

NOTE: The AppWave Administrator can also push applications to your AppWave Browser so that applications are automatically downloaded when you run AppWave Browser. Folders pushed to the AppWave Browser appear in the AppWave area of the AppWave Browser.

- 1 Using the search bar, locate the application and version you want to download.
- 2 Right-click the application and select **Download**.



The application is downloaded to an application directory in your local repository:

Windows XP: C:\Documents and Settings\[username]\Local Settings\Application Data\Embarcadero\Product Repository

Windows 7 and Vista: C:\Users\[username]\AppData\Local\Embarcadero\Product Repository

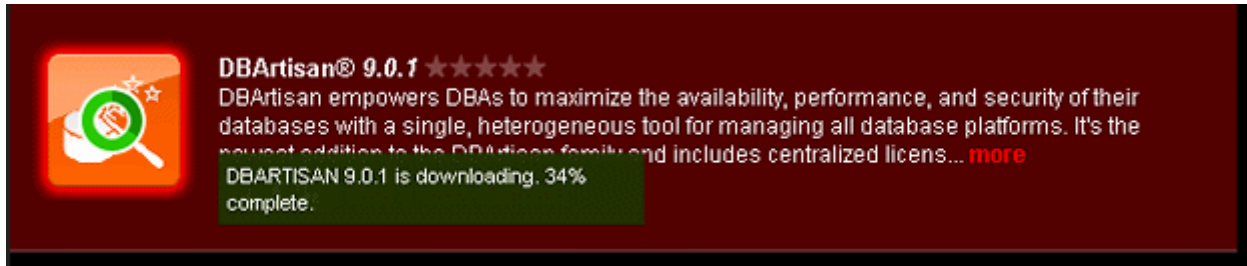
You can change the location of your local repository in the AppWave Options dialog. For more information, see [Configuring AppWave Browser Options](#).

In the Application window, you will see that the download is in progress as shown in the following image. The green circle indicates that caching is in progress.



When the application has been downloaded to your local repository, a message pop up appears indicating that the download has finished. This message will also appear in the Notifications.

Hover the mouse over the application icon to view the download progress as shown in the following.



USING APPS OFFLINE

You can use your Embarcadero, free apps, and 3rd party apps (such as Adobe Photoshop) offline, when not connected to AppWave if the following criteria have been met:

- Your AppWave administrator has assigned a license for the app to you or to your group.
- You have downloaded the app to your local repository.
- You have bookmarked the application so that it is visible in AppWave Browser when not connected to AppWave.
- You have run the application at least once, so that the license file is downloaded to your system.
- **Concurrent Licenses:** If you have a concurrent license for an Embarcadero XE app or 3rd party app, you can check out the license for offline use. You can use the app in offline mode for the maximum number of days specified by the AppWave administrator.
- **Network Named User License:** If you have a named network license for an Embarcadero XE app, you do not need to check out the license for offline use. The license is checked out automatically when you launch the app. You can use the app in offline mode for the maximum number of days specified by the AppWave administrator.
- **Workstation License:** Free apps use a workstation license that enables you to perpetually run the app in either online or offline mode after you run it once. You must provide Embarcadero Developer Network credentials in order to run free apps.

INSTALLING PRODUCTS

Download the app installer from AppWave Browser as described in [Downloading Apps](#). Double-click the app installer to run the installer.

OR

In the Application Window, find and then double-click the application installer. The app installer runs.

NOTE: For installers, the application installation program launches. Follow the prompts of the installer. For installation assistance, see the installation or quick start guide of the relevant product documentation at docs.embarcadero.com.

USING TRIAL LICENSES

Trial licenses are available for all Embarcadero products for a period of 30 days from the time the license was issued. If you want to try an Embarcadero product, launch it from the AppWave Browser. Starting a trial for one Embarcadero product enables you to try out any of the products in the All-Access suite for 30 days. Once the trial period has expired you must purchase the app to continue using it. One trial license is available for each AppWave user.

RUNNING APPS FROM THE WINDOWS DESKTOP

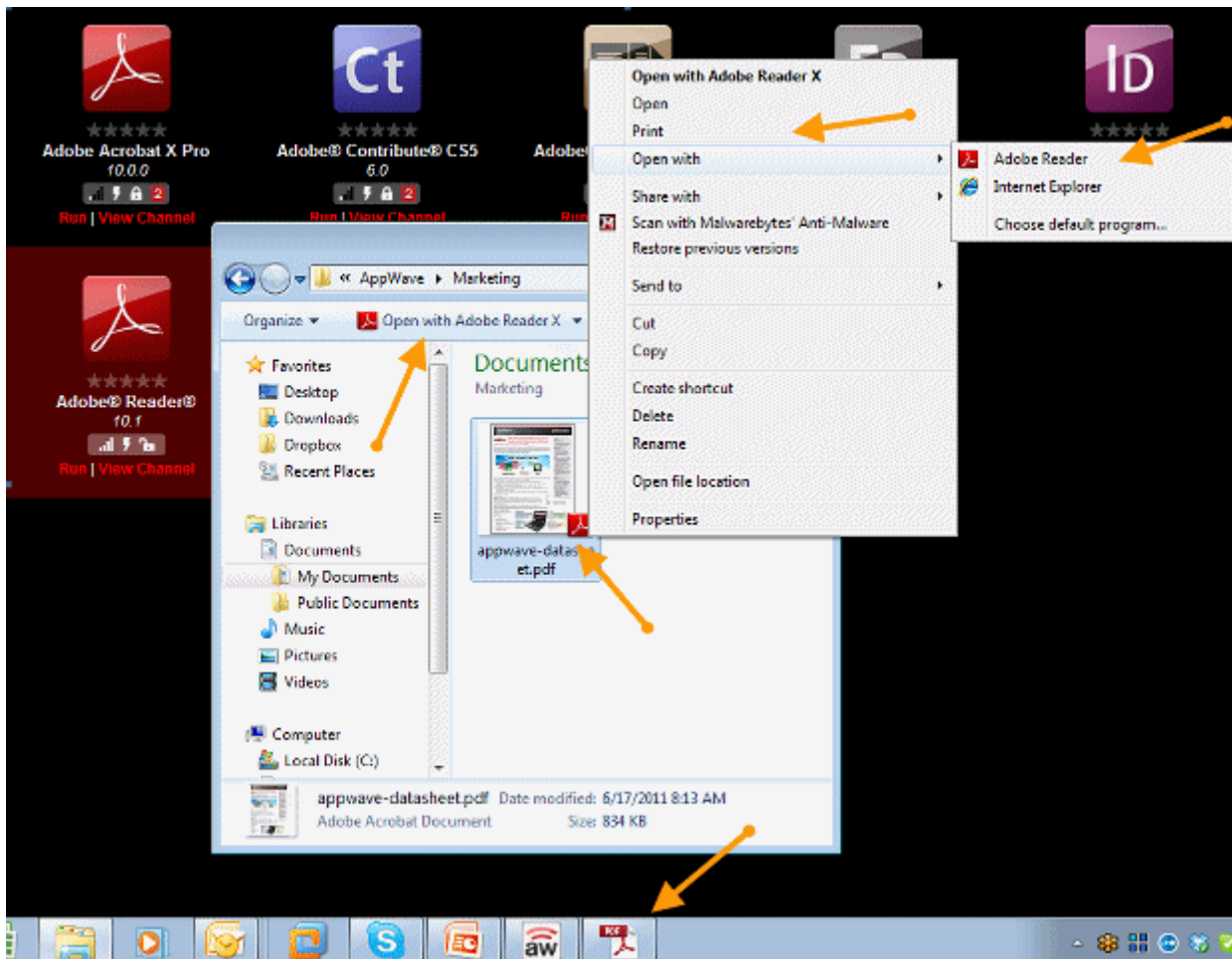
In AppWave Browser, you can create Windows Desktop bookmarks for app in your private AppWave, allowing you to launch apps directly from their bookmarks outside AppWave Browser. AppWave Browser will automatically launch if not already running. Free apps from the AppWave Store cannot be bookmarked.

The first time an app is launched, it will insert a shortcut in the Windows Start menu and integrate actions into the right-click menu for files associated with the app. The Start menu short-cut and right-click menu options are app dependent and can also be modified during the mastering process.

In Windows 7 you can pin the app to the Windows Taskbar in the same manner as you would any other Windows application. Also, in Windows 7 Explorer, when you click a document created with an app you have run, a shortcut appears in the window.

Shortcuts are retained until you quit AppWave Browser. Once you restart AppWave Browser, the shortcuts reappear. The shortcuts will no longer be available after you remove the app.

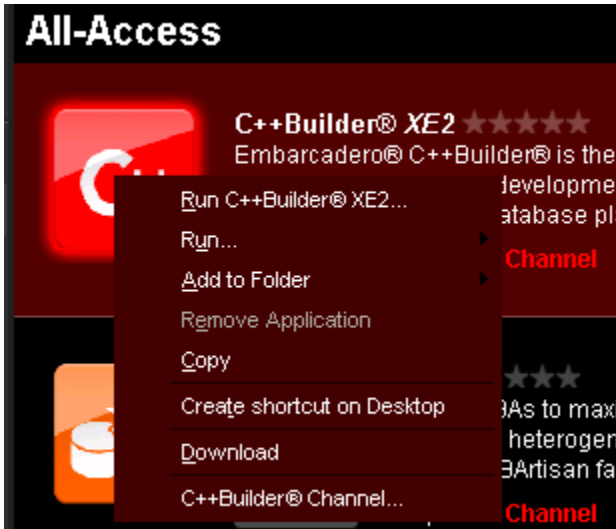
The following shows some of the places an app shortcut appears.



Creating a Desktop shortcut

- 1 In AppWave Browser, locate the application you want to launch from the Windows desktop.
- 2 Right-click the application.

The following menu appears.



3 Choose **Create shortcut on Desktop**.

A Windows shortcut is created on the desktop. You can now use the shortcut to launch the app. If AppWave Browser is not already running, it will be launched before streaming the app to your desktop.

KEEPING YOUR APPS CURRENT


By default, when there are multiple versions of an App available, only the latest version appears in the App Window but AppWave shows a red square in the App status that indicates that there are new versions available and how many there are.



When you go to the App Channel, you can click **View All** to see all the available versions. You can then run any version of the App available.

You can also ensure you always have the latest version of your applications by subscribing to AppWave notifications or by checking the Notifications in AppWave Browser, so you will always know when a new version is available.

Subscribing to AppWave Notifications in your Internet browser

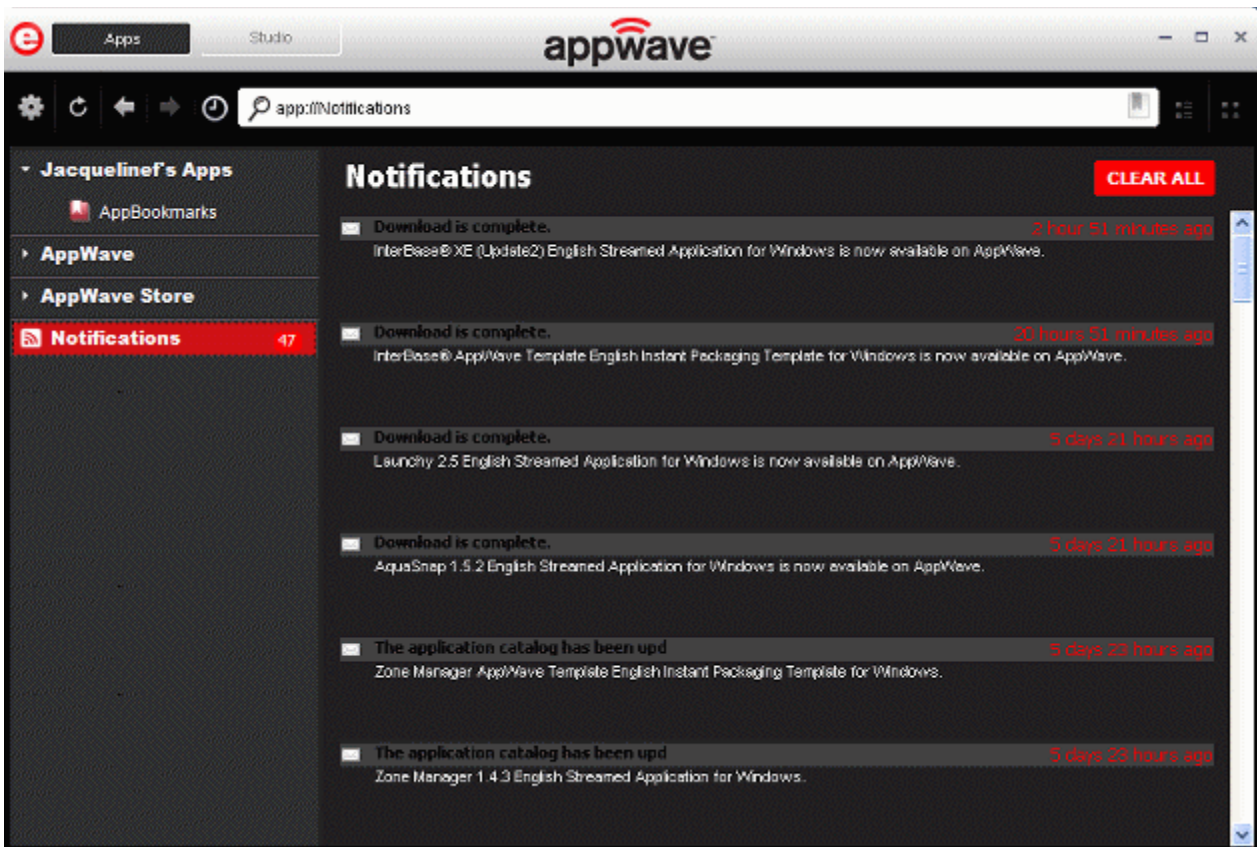
- 1 From the AppWave Home page, click the subscribe icon [] next to **AppWave notifications** at the bottom of the page.
- 2 For Internet Explorer, on the RSS feed page that appears, you can see the latest notifications. Click **Subscribe to this feed**

For Mozilla Firefox, a **Subscribe with Live Bookmark** dialog appears where you can choose where to place the live bookmark.

Checking Notifications

From the AppWave Browser, click **Notifications**.

The Notifications appear. Once you have seen the notifications, click **CLEAR ALL** to remove all Notifications displayed.



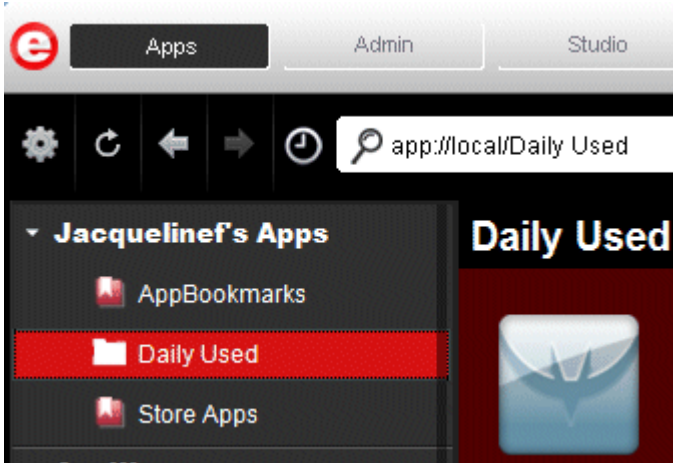
ORGANIZING YOUR APPS IN FOLDERS

You can organize applications by creating your own folders and then adding applications to them. Moving an application into a folder does not actually move the installer or App, but rather creates a pointer in the folder to the application or App.

- 1 Right-click *My Apps* and then select **New Folder**.
- 2 In the **Create New Folder** dialog, give the folder a meaningful name.
A new folder appears in your *My Apps*.
- 3 In the AppWave, locate the application you want to include in your new folder.

- Right-click the application, select **Add to Folder** and then select the folder to which you want to add a link to the application.

Your new folder is added to your *My Apps* grouping. In the image below, the **Daily Used** folder is a user folder.



To view the products in a Folder, click the name of the Folder and the contents appear in the Application Window.

To delete a folder, right-click the name of the Folder and then select **Remove Folder**.

To rename a folder, right-click the name of the Folder and then select **Rename Folder**.

To add an application to your user folder, locate the app and then right-click its icon and select **Add to Folder** and then choose the destination folder. You can add applications that are on your private AppWave, or are in your AppBookmarks, Store Apps or other user folders. You cannot add AppWave Store apps to your user folder until you actually run the app and it has an entry in the Store Apps folder.

To remove an application from a user folder or from AppBookmarks, select the folder, right-click the application in the Application Window, and then select **Delete Item**.

READING AND WRITING APP REVIEWS

Within AppWave Browser you can rate the available applications and share your experiences using these applications with other users of the AppWave hosting the application. Ratings displayed for both products and their star ratings are weighted averages, so that a product or rating with three ratings of five stars, one rating of four stars and one rating of one star would receive an overall rating of four stars, $((5+5+5+4+1)/5=4)$. Once submitted, product and review ratings, and comments may be moderated by the AppWave administrator who may determine whether or not to post the review comments for viewing by other AppWave users. Each review is also screened for questionable or vulgar words that if present, will prevent the review from being accepted by AppWave.

On AppWave Store, you can also read and write reviews of Apps. From the AppWave Store application window, click the name of the App to view the application details and also read and write reviews. For your convenience you can also share app review pages on AppWave Store with your friends via Email, Linked In, Facebook, Twitter, Yammer, and many other social venues. Just click one of the icons on the top right page of the app channel.

Read a review

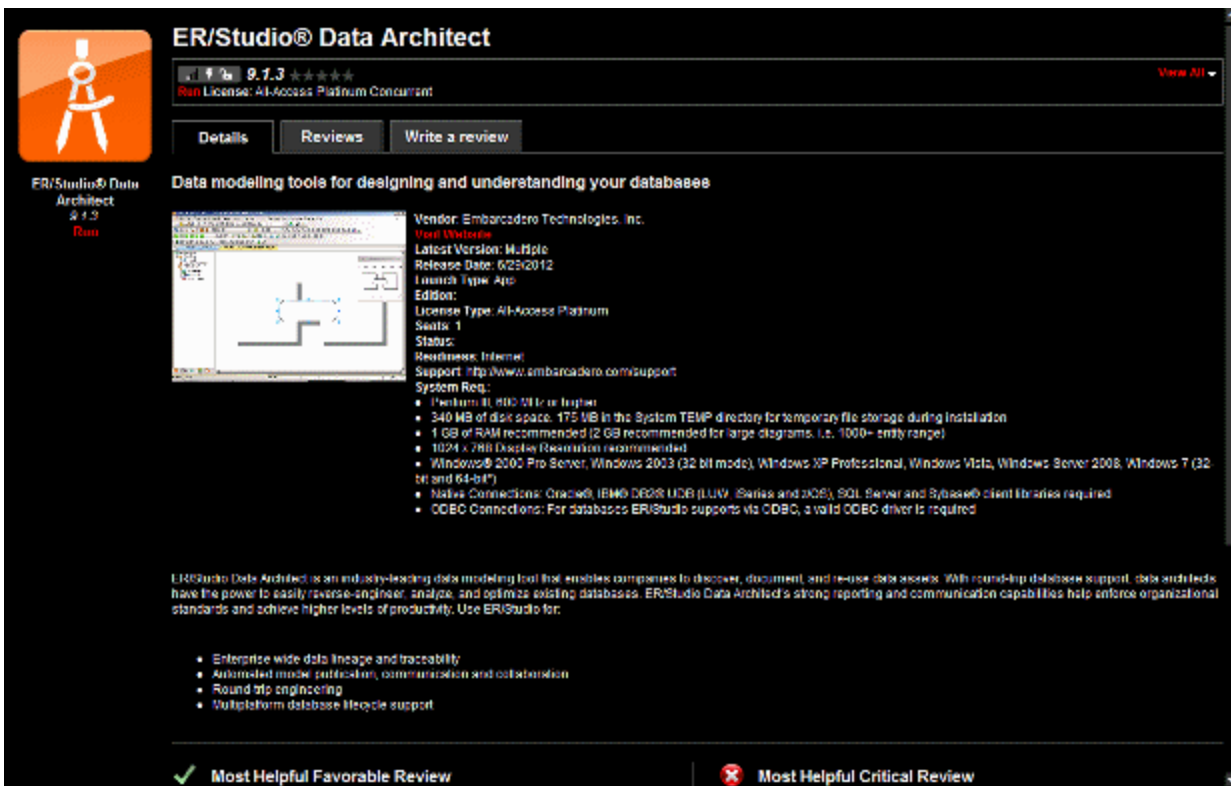
- 1 In the **Application Window**, locate the product you want to review or want to read reviews about.

TIP: Applications with reviews will have a number of colored stars, which represent the average rating for that product.



- 2 Click **View Channel**, or in the AppWave Store, next to the app description, click **More**.

On the application channel, you can read a detailed description of the application, and read, write, and rate application reviews.



- 3 Click the **Reviews** tab.

The reviews pane by default shows the **Most Helpful Favorable** and **Most Helpful Critical Review** for the product.

ER/Studio® Data Architect

9.1.0 ★★★★★ [View All](#)

Run License: All-Access Platinum(Network Trial, Network Trial) Concurrent

Details Reviews Write a review

Reviews

✓ **Most Helpful Favorable Review**

Great Data Modeling Tool ★★★★★ 👍 1 👎 0

"ER/Studio Data Architect is truly a world class data modeling tool. I couldn't imagine doing my job with out it!"

John Thompson
Chief Data Architect *

by EMBARCADERO\SWETMORE on 8/10/2011 2:10:18 PM

Write a review

✗ **Most Helpful Critical Review**

Write a review

On this pane you can see how other users have voted on the helpfulness of the review, thumbs up [👍] for a helpful review, and thumbs down [👎] for an unhelpful review. On this page you can also rate the reviews. You can also filter the reviews and sort them.

NOTE: The AppWave administrator has the option of monitoring the reviews. If reviews are being monitored you will not see any reviews not approved by the administrator.

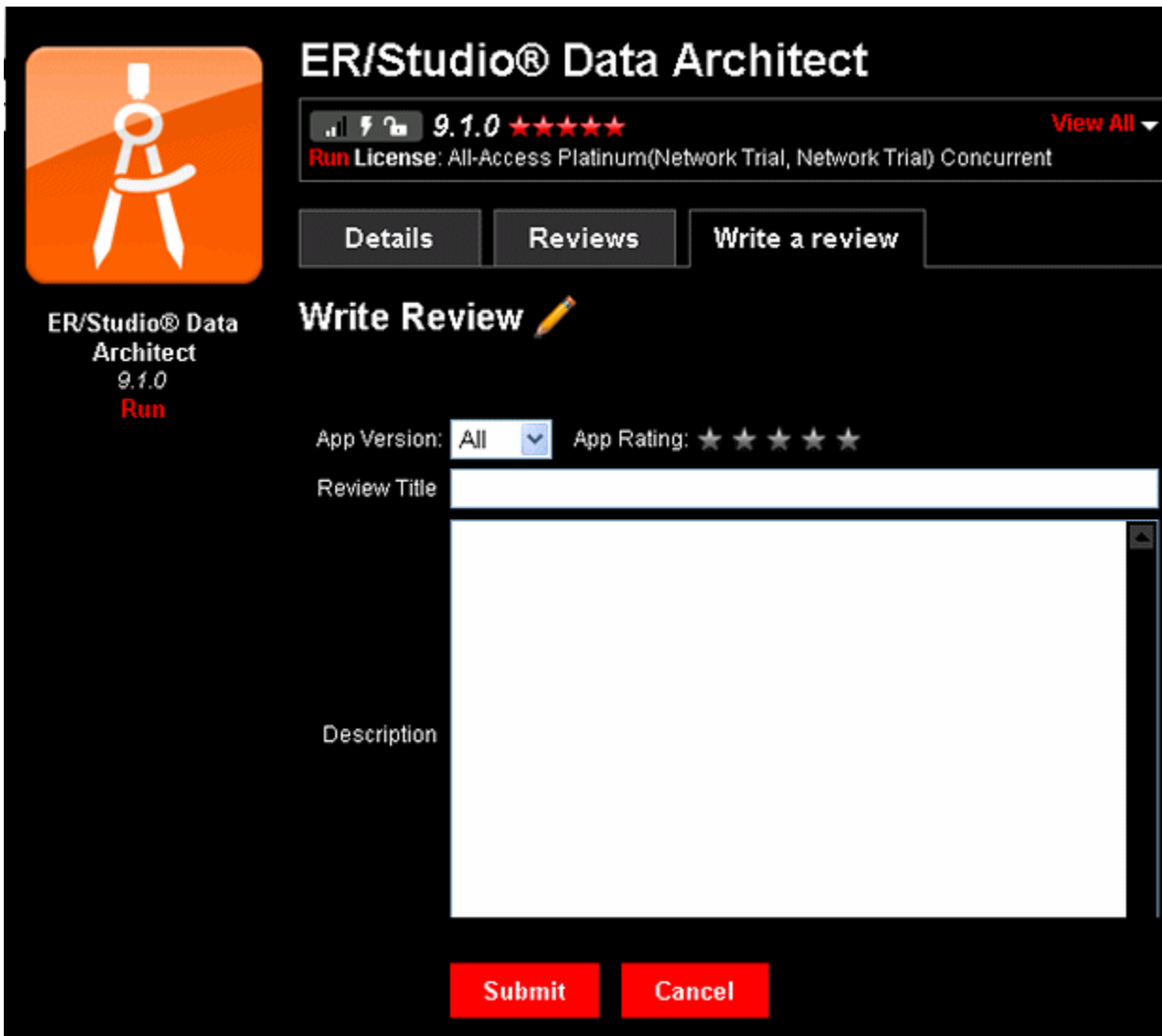
Voice your opinion of a review

- 4 Click thumbs up [👍] to agree with the review or click thumbs down [👎] to disagree.

Write a review

- 5 Near the top of the channel page, click the **Write a Review** tab.

The **Write a Review** pane appears.



- 6 Complete the review page and then click **Submit Review**.

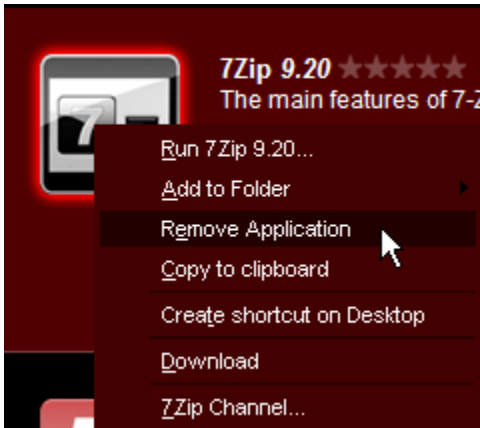
The Average Rating for the product will be adjusted if necessary and the review will be available for other users to read. You may have to wait until the Administrator authorizes the review before it will be posted.

REMOVING APPS

You can remove apps that were downloaded or cached on your system in the local repository. You cannot remove an app that is currently running. When you remove an app, any file associations for that app are also removed.

TIP: You can clear your cache totally and remove all apps from your local repository by clicking **Clear** on the Options dialog.

- 1 In the Application Window, locate the app you want to remove.
- 2 Right-click the app and select **Remove Application**.



- 3 Confirm that you want to completely remove the local files of the app.

This removes the contents of the following directories:

Windows XP: C:\Documents and Settings\[username]\Local Settings\Application Data\Embarcadero\Product Repository\[AppName]

Windows 7 and Vista: C:\Users\[username]\AppData\Local\Embarcadero\Product Repository\StreamingCore\[AppName]

NOTE: Your local product repository may be in a different location depending on whether you chose the default location as above or have configured AppWave to use a different directory on a local or shared network drive. For more information, see [Cache Folder](#) in "Configuring AppWave Browser Options".

UNINSTALLING APPWAVE BROWSER

You should uninstall AppWave Browser before installing a new version. You can uninstall AppWave Browser using your standard operating system application removal utility.

Windows XP: **Control Panel < Add or Remove Programs**

Windows 7: **Control Panel < Programs**

Index

A

- Additional resources 6
- All-Access
 - Folder 23
 - Licensed products 23
 - Membership 6
- App Bookmarks
 - Adding 24
 - Adding favorites 24
 - Deleting 24
- App cache size 12
- Application channel
 - Details 42
 - Read reviews 43
 - Write a review 44
- Application streaming 28
- Apps
 - Downloading 33
 - Favorites 22
 - Keeping current 39
 - Organizing 22
 - Removing 45
 - Reviewing 41
 - Running 25
 - Running standalone 33
 - Viewing channel 42
- AppWave
 - Available applications 23
 - Backup license server 33
 - Connecting to 9, 14
 - Connection property 14
 - Description 23
 - Folders 23
 - Logging in to 19
 - Login 15
 - New applications 23
 - Notifications folder 39
 - Readiness 29
 - Running applications 33
- AppWave Browser
 - Apps tab 19
 - Configuring options 11
 - Hiding 12
 - Launching 9
 - Repository 13
 - Studio tab 19
 - Switching views 24
 - Tabs 19
- AppWave Store 23
- Average rating 44

B

- Bookmarks 24

- Browser launching 11

C

- Cache folder 12
- Censoring reviews 43
- Channels
 - Read reviews 43
 - Viewing 42
 - Write a review 44
- Connection history 15

D

- Default options 13
- Discussion Groups 6
- Do not check for Browser updates 12
- Do not use proxy 15
- Documentation 6
- Download
 - Progress 34

F

- FAQs 6
- Folders
 - Administrator created 23
 - Creating 25, 40
 - Naming 22
 - Organizing 40
 - Removing 41
 - Renaming 41

- Forums 6

H

- Hide when minimized 12
- Host 16

I

- Icons
 - Application window 25
 - Interpreting 25
- Internet readiness 29

K

- Knowledge Base 6

L

- Latest version 39
- License 23
- List/Grid View 24
- Live bookmarks 39
- Local readiness 29
- Logging in 14

M

- My apps 22

INDEX

N

Notifications

- Description 23
- Folder 39
- RSS News Feed 23
- Subscribe to RSS feed 39
- Subscribing to 39
- Viewing 40

O

Options 11

P

- Password 16
- Port 16
- Product ratings 41
- Proxy 15
 - Authentication 16
 - Bypassing 16
 - Configuring 15–16
 - Internet settings 15

R

- Readiness 29
- Repository 13, 34
- Reviews 41
 - Censoring 41, 43
 - Moderating 41
 - Monitoring 43
 - Rating 42–43
 - Writing 44
- RSS feed 39

S

- Search filter 23
- Search/address bar
 - Filtering 23
 - Syntax supported 26

T

- Tools and options 11
- Turbo mode 12

U

- URI 26