



Product Documentation

AppWave™ New Features Guide

Version 4.2
Published July 29, 2013

© 2013 Embarcadero Technologies, Inc. Embarcadero, the Embarcadero Technologies logos, and all other Embarcadero Technologies product or service names are trademarks or registered trademarks of Embarcadero Technologies, Inc. All other trademarks are property of their respective owners.

Embarcadero Technologies, Inc. is a leading provider of award-winning tools for application developers and database professionals so they can design systems right, build them faster and run them better, regardless of their platform or programming language. Ninety of the Fortune 100 and an active community of more than three million users worldwide rely on Embarcadero products to increase productivity, reduce costs, simplify change management and compliance and accelerate innovation. The company's flagship tools include: Embarcadero® Change Manager™, CodeGear™ RAD Studio, DBArtisan®, Delphi®, ER/Studio®, JBuilder® and Rapid SQL®. Founded in 1993, Embarcadero is headquartered in San Francisco, with offices located around the world. Embarcadero is online at www.embarcadero.com.

Contents

- New Features of AppWave 4.2 7
 - AppWave 7
 - AppWave Scalability 7
 - AppWave Enterprise 8
 - Independent Software Vendor 8
 - Purchased Apps 9
 - Email Verification 9
 - First Time User Email Verification 10
 - Instant Trial Email Verification 11
 - AppWave Studio 12
 - Mastering of Apps by Vendors 12
 - Licensing of Purchased Apps when Mastering Apps 12
 - AppWave Browser 13
 - Progress Popup Window 13
- New Features of AppWave 4.1 15
 - AppWave Enterprise Store 15
 - AppWave Enterprise UI Customization 16
 - Automatic Proxy Server Detection 17
 - Independent Software Vendor Portal 18
 - AppWave Studio 18
 - Create AppWave Supported WebApp 18
 - Add Native Installer to AppWave Catalog 19
 - Best Practices 19
 - AppWave Browser 20
 - Installs for All Users 20
 - New App Buttons Designs and Functionality 21
 - Better Progress Information 22
 - Apps You Run Are Automatically Bookmarked 23
 - Customizing the AppWave User Interface Theme 24
 - Customizing the Format of the User Interface Theme 25
 - Replacing the Images in the AppWave Admin User Interface 34
 - Logo 34
 - Menu 34
 - Welcome to Embarcadero AppWave Dashboard 39

CONTENTS

User	42
View User	43
Edit User	44
Add Concurrent Users	44
Add Named Users	45
Import Users	45
Create User	45
Manage Groups	45
Create Group	46
LDAP Users & Groups	46
View Folder	46
Edit Folder	47
App Folders	48
App Inventory	48
Version Updates	51
Download History	52
Moderate Reviews	52
Banners Management	53
Email Direct Marketing	54
License Inventory	54
License Files	54
Retrieve License	55
Set Trial Owner	55
Third Party Licenses	55
License Assignments	56
Concurrent Users, Named Users, and Workstation Permissions	57
Valid IPs	58
Reservations and Workstation Reservations	59
Auto Activation Licenses	59
Connected Users	60
Service Status	60
Set Up Licenses	61
System Properties Email	62
Streaming Service	62
Publishing Progress	63
AppWave Backup Setup	63
Reports	64
Notifications	65

Home Page	66
Background	66
New Features of AppWave 4.0	67
AppWave Enterprise Store	67
AppWave Enterprise Store Catalog	67
Browsing the App Catalog	69
New Reports	71
Streamed Application Usage Frequency Report	73
Streamed Application Usage Duration Report	74
Streamed Application Usage Duration by User Report	75
Installer	75
AppWave Public Store	76
Installer	76
AppWave Public Store Design	77
App Listings Displayed in Grid View	78
Hovering Mouse Over an App Listing Displays App Details	78
App Channel has Three Tabs	79
AppWave Browser	81
Progress Feedback	81
Smart App Links	81
Colored and Labeled Buttons	83
Information Displayed on Hover	84
App Channel Layout	84
WebApps Support	87
AppWave Studio	88
Open for Upgrade	88
Webapp Support	88
Smart App Links	89

CONTENTS

NEW FEATURES OF APPWAVE 4.2

The following describe the new features of AppWave 4.2:

[AppWave](#)

- [AppWave Scalability](#)

[AppWave Enterprise](#)

- [Independent Software Vendor](#)
- [Email Verification](#)

[AppWave Studio](#)

- [Mastering and Licensing of Apps by Vendors](#)

[AppWave Browser](#)

- [Progress Popup Window](#)

APPWAVE

The following changes have been made in the AppWave for the 4.2 release.

- [AppWave Scalability](#)

APPWAVE SCALABILITY

The AppWave Public host has more stability with a new IT infrastructure deployment. It is more scalable and robust for a larger number of concurrent users.

APPWAVE ENTERPRISE

The ability to purchase apps from an Independent Software Vendor has been implemented in the 4.2 release. Customers of a registered Independent Software Vendor (ISV) can now purchase their apps from the AppWave Store.

- [Independent Software Vendor](#)
- [Email Verification](#)

INDEPENDENT SOFTWARE VENDOR

The Vendor Portal is the gateway to an easy-to-use app store for independent software vendors (ISVs). Once an ISV has self-registered for the AppWave Store, they can upload their products. Once the products are available in the Store, an interface is available to manage their products through two different reports: a summary report and a detail report which track downloads, sales, customers, etc.

The ISV apps must be mastered using the AppWave Studio, and require an Embarcadero license which is activated and licensed during the initial launch from the AppWave Browser.

For more information please refer to the *Independent Software Vendor Portal User Guide*.

EMAIL VERIFICATION

Before an app can be launched by a customer, their email address needs to be verified.

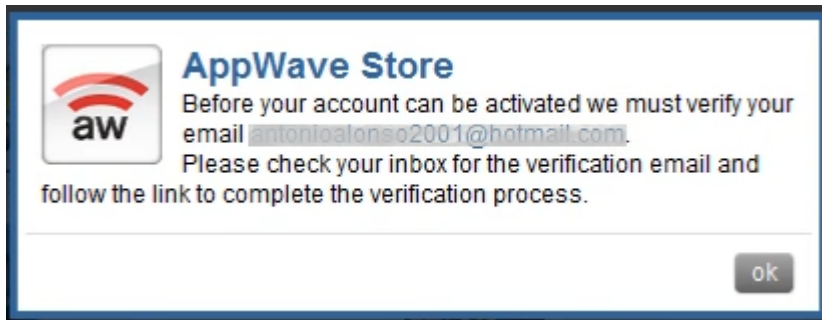
NOTE: An existing customer can sign in to the Store without being asked to verify their email, however they will be prompted to verify their email when launching an app or if they change their email address.

- All customers, both old and new, need to verify their email address. New customers receive an email with a verification link when they create their account. An existing customer is asked to verify their email when launching an app.
- Once an email has been verified the customer can launch any number of apps.
- When a customer changes his email address, the new email must be verified.

FIRST TIME USER EMAIL VERIFICATION

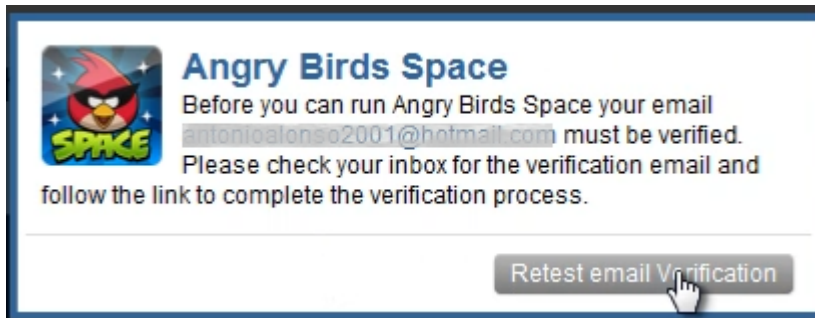
A customer's email is verified when they sign up as a new user.

- 1 In the AppWave Store, when you select a free app and click **Free** the Sign In dialog opens.
- 2 Select the **Create One** link in the Sign In dialog and the Sign Up dialog opens. Complete the required information.
- 3 When you click **Sign Up** you are taken back to the AppWave Store home page and the Activate Email Account message dialog opens.
- 4 If you click an app, the dialog that appears shows the icon and the name of the app.



- 5 Check your email inbox for a verification email from edn.embarcadero.com.

NOTE: If you do not activate the email via the link or doesn't have an email, you can close the message dialog by clicking **ok**. However if you try to install an app, you get a message asking you retest your email verification.



- 6 Click **Retest email Verification** and the system checks whether your email is verified. If not, a message opens informing you that the email has not been verified. Also at the time retest is clicked, a verification email is sent. Click **Accept** to close the dialog box.
- 7 Go to your email, open the edn@embarcadero.com mail, and click the link to open the Embarcadero Developer Network Member Services page. At this point your email is verified.
- 8 Click **Continue** and the application opens. Or you can click Retest again and you will get a message that your app is being broadcast to your computer where you can launch it.

APPWAVE STUDIO

The new features and improvements for the 4.2 release are discussed below:

- [Mastering and Licensing of Apps by Vendors](#)

MASTERING AND LICENSING OF APPS BY VENDORS

The Independent Software Vendor (ISV) must master their apps using the AppWave Studio before they can be made available for purchase by the customer. During mastering you are prompted to select the **Store Vendor App** option in the **Vendors Setting** tab. You are then asked to provide your Vendor credentials, and select the license you want to use. AppWave Studio sends this data to the license server over a secure connection and receives an app ID for each app mastered. The Studio stores the IDs and continues with mastering. This data is sent to the license server which generates a license for the app. The same process is triggered during re-mastering in which case IDs are either verified or replaced.

For more information, please refer to the *Mastering your Apps* chapter in the *Independent Software Vendor Portal User Guide*.

APPWAVE BROWSER

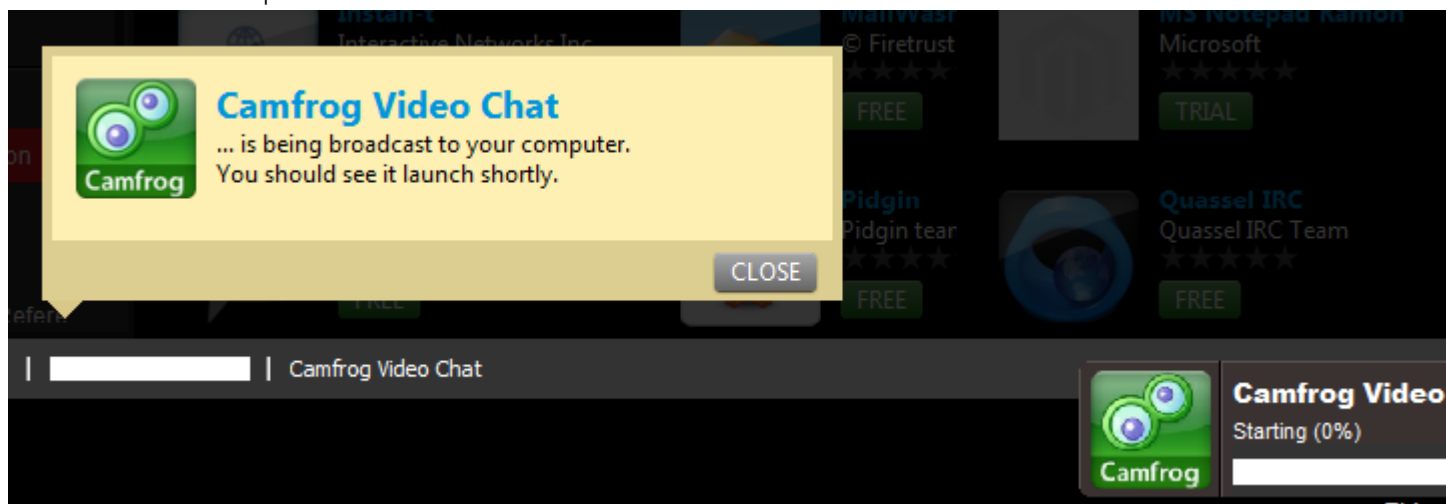
The new features of the AppWave Browser 4.2 are discussed below:

- [Progress Popup Window](#)

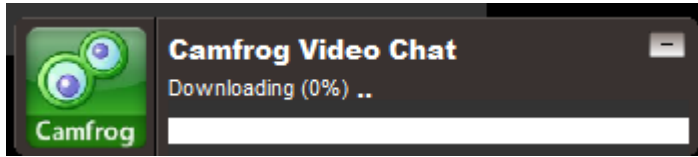
PROGRESS POPUP WINDOW

The progress popup shows up as soon as the AppWave Browser starts to give the installer the information that the launching process is active.

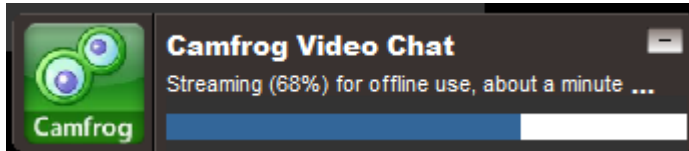
- Even though the progress window seems to slow or stop, the pre-requisites continue to load and the launch process continues.



- After the pre-requisites are loaded a progress bar appears in the lower right corner of the screen showing the loading progress and the preparation of the app.



- Once the downloading is complete, the app continues to stream even after the product launches. This streaming is for Offline use.



NEW FEATURES OF APPWAVE 4.1

The following describe the new features of AppWave 4.1:

AppWave Enterprise Store

- [AppWave Enterprise UI Customization](#)
 - [Customizing the AppWave User Interface Theme](#)
 - [Customizing the Format of the User Interface Theme](#)
 - [Replacing the Images in the AppWave Admin User Interface](#)
- [Automatic Proxy Server Detection](#)
- [Independent Software Vendor Portal](#)

AppWave Studio

- [Create AppWave Supported WebApp](#)
- [Add Native Installer to AppWave Catalog](#)
- [Best Practices](#)

AppWave Browser

- [Installs for All Users](#)
- [New App Buttons Designs and Functionality](#)
- [Better Progress Information](#)
- [Apps You Run Are Automatically Bookmarked](#)

APPWAVE ENTERPRISE STORE

The AppWave Enterprise Store is for PC software and gives your organization fast and easy access to software. Your end users can search, browse, and run Windows software immediately. You can also view the top apps for each category as well as overall.

APPWAVE ENTERPRISE UI CUSTOMIZATION

Using the User Interface Theme option on the AppWave menu of the AppWave Administration page, you can customize existing themes to change the fonts and background colors of the interface. You can also package your own theme, consisting of a styles.css file and a directory of images that when implemented can replace the existing AppWave theme. You can customize the following features of the private AppWave user interface:

- Body
- Header Logo
- Navigation menu
- Menu contents
- Dashboard header, logo, contents, and descriptions, and icons
- View of users
- All icons

For more detailed information, see [Customizing the AppWave User Interface Theme](#), [Customizing the Format of the User Interface Theme](#) and [Replacing the Images in the AppWave Admin User Interface](#).

AUTOMATIC PROXY SERVER DETECTION

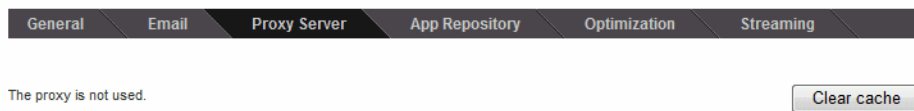
Security in some environments requires the use of an internet proxy. You can configure AppWave to use a proxy instead of connecting to the internet directly for catalog updates and product downloads, and communications with AppWave Browser users. Proxy settings are automatically recognized during installation if they are set in Internet Explorer or in the Windows Control Panel.

- 1 From the **SYSTEM MANAGEMENT** menu, click **System Properties** and then click the **Proxy Server** tab.

The **Proxy Server** tab appears.

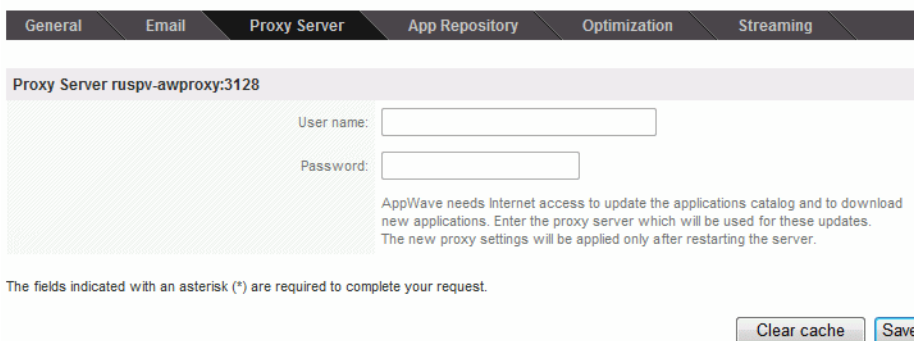
If a proxy server has not been set, this page indicates that a proxy server was not used.

System Properties



If a proxy server has been configured on your system, the following displays:

System Properties



- *If you set your system not to use a proxy, you will see the first image above.*
- *If an anonymous proxy has been configured, the second image above appears. You will not be able to change the **User name** and **Password** and these fields will not be available.*
- *If a non-anonymous proxy has been configured, the second image above appears. You must enter the **User name** and **Password** on this screen and click **Save** in order to connect to the proxy server once AppWave has been restarted.*

*To force AppWave to detect a change in the proxy settings, click **Clear cache**.*

- *If you set your system to use a different proxy, you will see the second image above and will see that the Proxy Server name has changed.*
- *If your system was previously not using a proxy and you have configured a proxy in Windows, click **Clear cache** to auto-detect the proxy. The second image above will appear and you will see that the proxy server was detected.*

- *If you set your system not to use a proxy, you will see the first image above.*

You must restart the AppWave service to apply the new proxy settings.

User name/Password: The name and password of the user with permissions to connect to the proxy server for internet usage.

INDEPENDENT SOFTWARE VENDOR PORTAL

The Vendor Portal is the gateway to an easy-to-use app store for independent software vendors (ISVs). Once an ISV has self-registered for the AppWave Store, they can upload their products. Once the products are available in the Store, an interface is available to manage their products through two different reports: a summary report and a detail report which track downloads, sales, customers, etc.


APPWAVE STUDIO

The new features and improvements for the 4.1 release are discussed below:

CREATE APPWAVE SUPPORTED WEBAPP

WebApps are applications that are accessible via an Internet Browser, typically executed on an application server either hosted by the enterprise customer directly or accessed as a "cloud" service that is hosted externally. The AppWave Studio is the ideal mastering tool for defining the parameters for the display and execution of WebApps from within AppWave Browser.

Mastering a WebApp in the AppWave Studio does not require recording as for other apps, but you must define the required parameters.

When you click **Create AppWave Supported WebApp** or click , the New Web App dialog briefly appears. This retrieves the PADE plugin information from the server. This plugin helps you master an app by automatically manipulating the file and registry entries.

Once the plugins have been loaded you need to enter the title of your URL, the URL address, and the type of browser you want to use. You can also set parameters such as the size of the browser window on startup, and what tools (i.e., back/forward arrows) to display.

The next step is to enter key information such as icons to use, product name and version, EULA text, the application's website, etc. You can then test your application and broadcast the final product.

This mastered WebApp is then available in the AppWave Browser where it can be run.

ADD NATIVE INSTALLER TO APPWAVE CATALOG

This feature allows you to add a Native Installer to the AppWave Catalog with the required metadata. This function delivers software that cannot be easily mastered. Some examples of this are: Native 64-bit, printer drivers, and software establishing Windows services.

It can also distribute data and media content packaged up as installers. Examples of this type of content would be: data models, training materials and manuals, and data sets.

As you walk through the mastering steps in the AppWave Studio you need to provide key information to complete the mastering successfully.

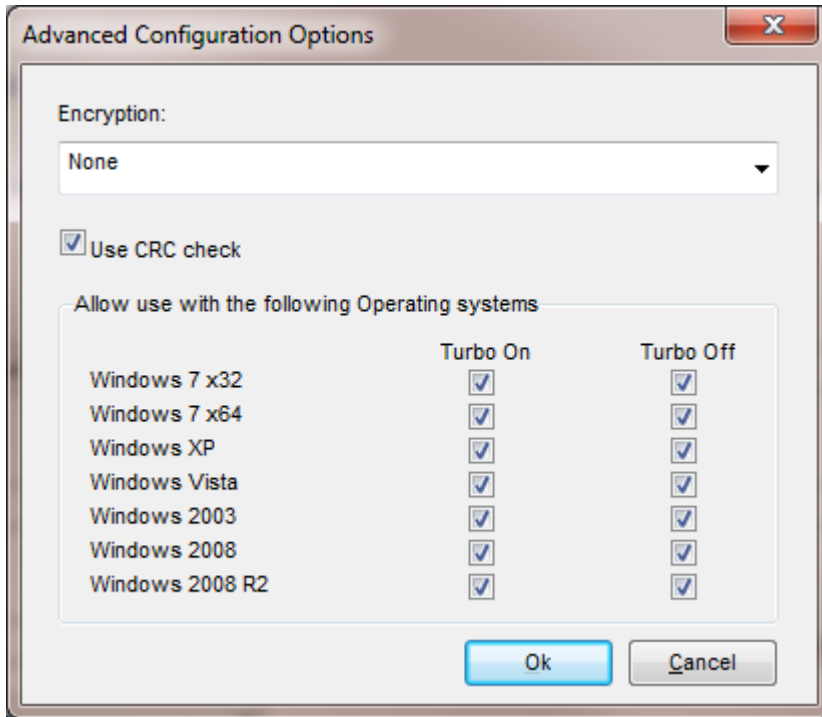
In the **Start** step you need to provide the install location, the launch executable and provide an un-install registration key. Once the installer has been created you need to complete the required fields in the **Launch & Brand** step such as working folder, product name and version, and publisher.

In the **App** step you can edit any installer settings you entered in the Start step. Then when you advance to the **Test** step, you can master and test your app. Once the test is complete you can advance to the **Broadcast** step. Once the broadcasting is complete a notification appears in the bottom right corner of the screen. This lets you know that your app is available.

BEST PRACTICES

- Always master on Windows XP SP3 (32-bit) to ensure the best compatibility with newer versions of Windows.
- If possible, master in a Virtual Machine environment with a clean OS. Use the “snapshot” functionality to capture a clean state before mastering is begun. This makes it very easy to redo a mastering task or start the next mastering task from a clean state by reverting to previous snapshot.

- Always test the app thoroughly on all supported Windows versions – especially if mastering is not done on Windows XP SP3. If known incompatibilities exist, open the **Advanced Configuration Options** dialog by clicking **Advanced** in Step 4 (Test). Then uncheck the incompatible OS and click **OK**.



- Make sure to include any runtime dependencies in the app mastering process to guarantee that the app will run across multiple Windows versions. Or you can describe the pre-requisites under the system requirements in Step 2 - the Launch & Brand page.

APPWAVE BROWSER

The new features of the AppWave Browser are discussed below:

INSTALLS FOR ALL USERS

- When installed AppWave Browser is automatically installed for all users.

NEW APP BUTTONS DESIGNS AND FUNCTIONALITY

RUN Launches an app that has been cached on your private AppWave. Apps that you have **Run** are bookmarked and appears in the Application Window when you click **Managed Apps**.

+ ADD Add an app to your local repository. Added apps are automatically bookmarked and will appear in your AppBookmarks folder. Once AppWave finishes broadcasting the app to your system, it will launch automatically and the **+Add** button for the app will change to **Run**. Apps that you have **Run** are bookmarked and appears in the Application Window when you click **Managed Apps**.

NOTE: When you choose to add an app that is a member of a suite, all the apps in that suite will start downloading.

REQUEST Indicates that the trial license for the app has expired. Click to request a license from the private AppWave Enterprise server. If a license is not available, you will be prompted to **Retrieve/Import License(s)** from the Embarcadero license center or to **Introduce a serial number**.

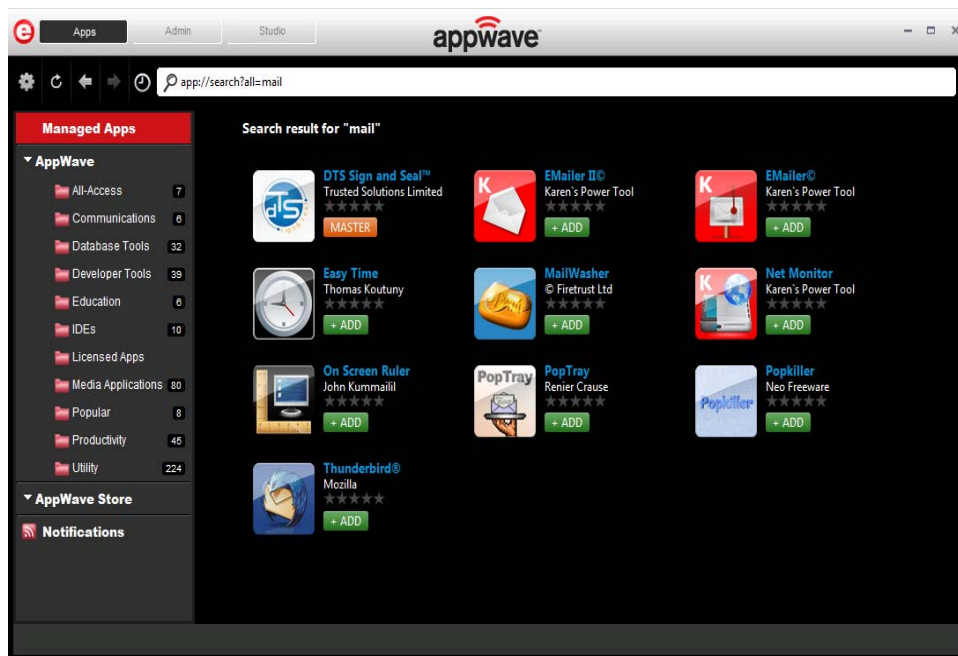
FREE Launches a Free app. After you sign in to the AppWave Store, the app launches. Free apps may be trial apps that require a license to use beyond the trial period, or may be apps that have a subset of the features of the licensed versions. Apps that you have **Run** are bookmarked and appears in the Application Window when you click **Managed Apps**.

MASTER Downloads the template to master a third party, Embarcadero-supported app and starts the Studio mastering process. Templates do not appear if you do not have mastering (authoring) privileges.

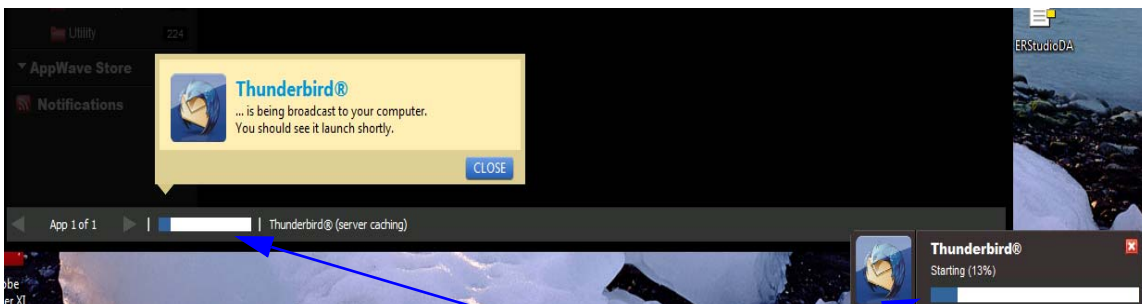
INSTALL Launches the app installer. Installed apps run faster on your system and can be run when not connected to the AppWave Enterprise Store when offline license usage privileges have to been granted to the user.

BETTER PROGRESS INFORMATION

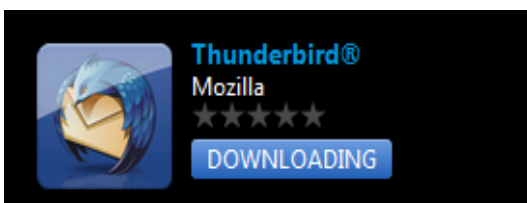
For example, you want to install an email program, so first you search for the program:



You decide to use Thunderbird, so you double-click **+ADD** for that app. Immediately, you will see the progress of the download start.



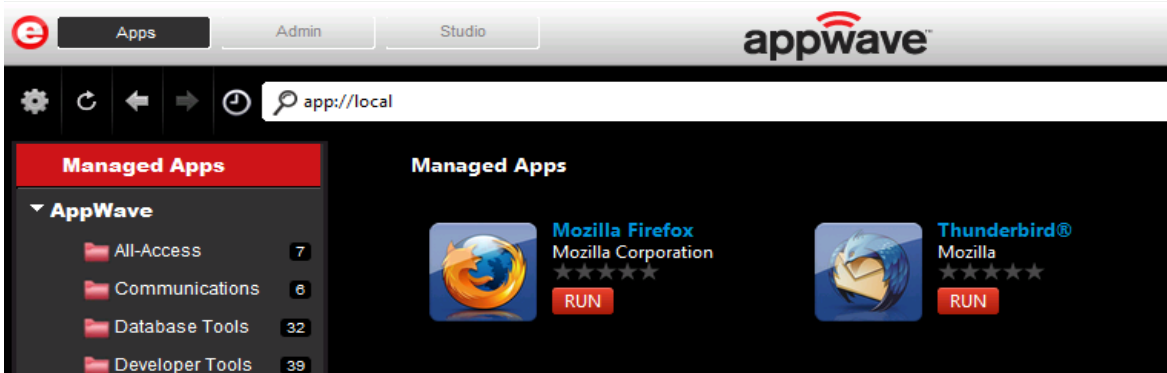
The status of the app changes from **FREE**, **+ADD** or **RUN** to **DOWNLOADING**.



When the app is ready, it launches and you can use it.

APPS YOU RUN ARE AUTOMATICALLY BOOKMARKED

Once run, the app status changes to **RUN** and you will see that a shortcut to that app appears in **Managed Apps**, where its readiness displays as **RUN**. This applies to apps on your Private AppWave and on the Embarcadero AppWave Store.



CUSTOMIZING THE APPWAVE USER INTERFACE THEME

- 1 From the AppWave menu, select **User Interface Theme**.

The screenshot displays the 'User Interface Customization' interface. On the left, a sidebar lists various management options, with 'User Interface Theme' highlighted in an orange box. The main content area shows the current theme set to 'Default' and an 'Apply Theme' button. Below this, a text area contains CSS code for the theme, also highlighted in an orange box. The code includes rules for link styling, font families, and background colors. At the bottom of the interface, there are three buttons: 'Add Theme', 'Remove Theme', and 'Download Theme', each with a brief description of its function.

- 2 The text that displays in the orange box above is the .css file for the User Interface Theme select. In the case above, it's the **Default** user interface theme.
- 3 If you do not have access to the AppWave host file system to add a theme to the correct place in the AppWave installation directory, you can edit the .css file above to customize the user interface and then click **Save**.

If you want to modify the active theme and then upload it later from the host, you can click the **Download Theme** button and download the .zip file containing the *theme.css* file and the images folder.

If you have access to the AppWave host file system and want to add a new theme,

- a Create two new directories for the customized files, `Images` and `Styles`.
 - b Change any of the images described in [Replacing the Images in the AppWave Admin User Interface](#), and place the replacement images in the `Images` directory.
 - c Copy the text from the Default theme as shown above and edit it as required. The various `.css` elements of the **Default** theme are described in [Customizing the Format of the User Interface Theme](#). You can name the new `.css` file anything you like. Place the new `theme.css` file into the `styles` directory.
 - d Create a `.zip` file containing the `Images` and `styles` directories. You can name the `.zip` file anything you like.
 - e Click **Add Theme** and locate the `.zip` file you just created that contains your new theme files. The new theme appears in the **User Interface Theme** list.
 - f From the **User Interface Theme** list, select your new theme and then click **Apply Theme**.
- 4 Press **F5** to apply the changes to the user interface and refresh the page you are viewing.

NOTE: If you have a custom theme selected, you can revert to the Default theme by clicking **Remove Theme** at the bottom of the **User interface Customization** page. However, if you change the default theme you cannot revert to it automatically in this fashion. You would need to undo the changes you previously made to the default theme.

CUSTOMIZING THE FORMAT OF THE USER INTERFACE THEME

The following describes the elements of the `.css` file that you can customize. These descriptions are presented in the following format:

Brief Identifier

Image: A visual representation of the format of the element

Description: A description of the element.

CSS classes: The classes that define this element in the `.css` file.

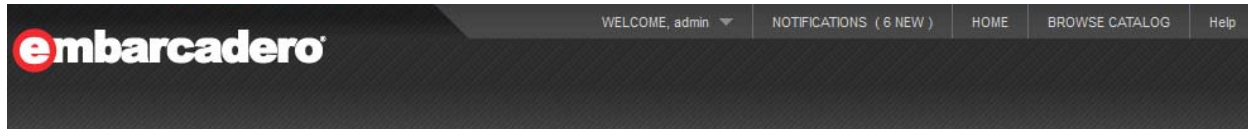
Body

Image: N/A

Description: The Body style is the parent of all elements and also describes the background image.

CSS classes: `.body`

Header



Description: The Header element contains the logo and the navigation menu.

CSS classes: .header_wrapper , .hdr

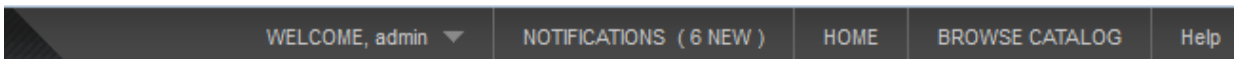
Logo



Description: Main logo

CSS classes: .main_logo

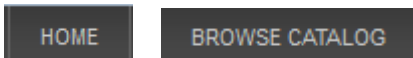
Navigation menu



Description: Navigation menu common style

CSS classes: .mininav_wrapper

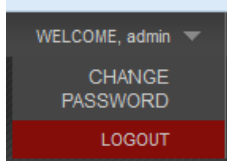
Element navigation menu



Description: Navigation menu item

CSS classes: .mininav_wrapper a:link, .mininav_wrapper a:visited, .mininav_wrapper a:active, A:link, A:visited .menuBarItem

Welcome item on the navigation menu



Description: Welcome item in navigation menu

CSS classes: .menubox, .menuoption

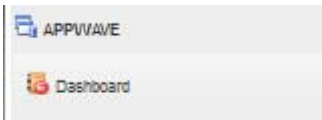
Menu



Description: Main menu in the Admin user interface.

CSS classes: .content-rightpanel

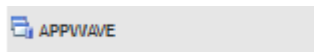
Box for menu items



Description: Box for menu items

CSS classes: .content-rightpanel .moreinfo_box, .content-rightpanel .seealso_box, .content-rightpanel .customer_quotes

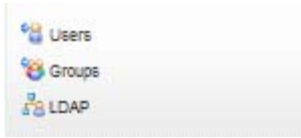
Header box for menu items



Description: A description of the element.

CSS classes: .seealso_box h1

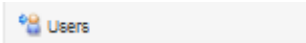
Menu items



Description: Menu items

CSS classes: .seealso_box .links, .archive .links, .moreinfo_box .links

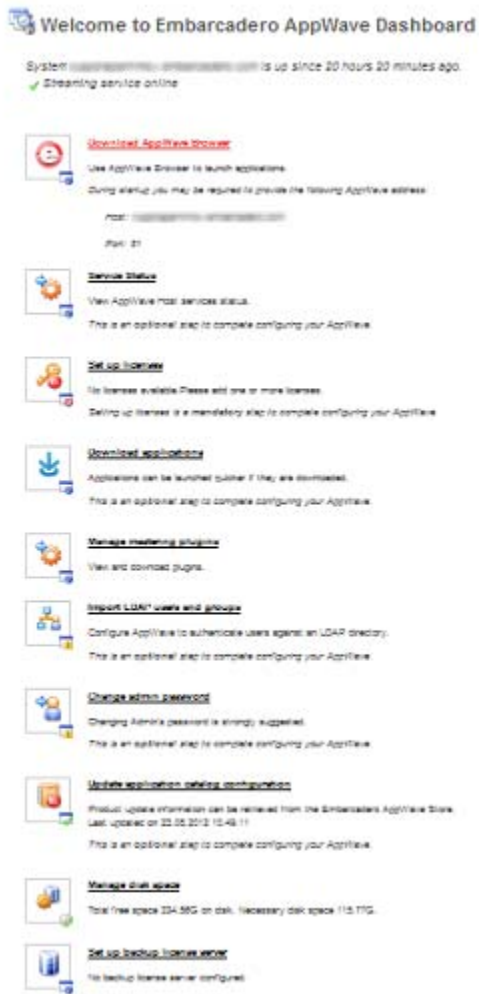
Menu items link



Description: Menu items link

CSS classes: .archive .links a:link, .archive .links a:visited, .archive .links a:active, .moreinfo_box .links a:link, .moreinfo_box .links a:visited, .moreinfo_box .links a:active, .seealso_box .links a:link, .seealso_box .links a:visited, .seealso_box .links a:active

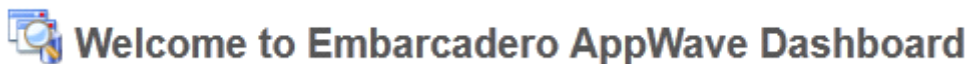
Welcome to Embarcadero AppWave Dashboard (welcome.spg)



Description: Dashboard page common style

CSS classes: .bodyText

Dashboard header



Description: Header for dashboard page

CSS classes: .bodyText h1

Dashboard header picture



Description: Picture for header dashboard

CSS classes: .pageTitle_icon, img

Dashboard description

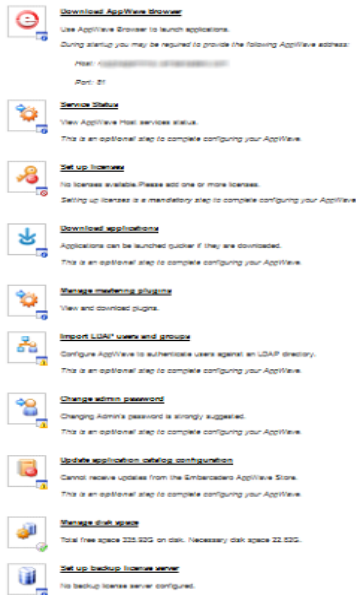
System *app-wave-hmcv-embarcadero.com* is up since 20 hours 20 minutes ago.

✔ Streaming service online

Description: Dashboard description

CSS classes: .wizard_desc, .image_holder, p, .std

Dashboard elements



Description: Dashboard elements common class

CSS classes: .wizard

Dashboard element image



Description: Dashboard element image

CSS classes: .wizard_icon, .wizard A, .wizard_icon img

Dashboard element header

[Download AppWave Browser](#)

Description: Dashboard element header

CSS classes: .wizard A, A:link, A:visited

Dashboard element description

Use AppWave Browser to launch applications.

Description: Dashboard element description

CSS classes: .image_holder, p, .std, .wizard span

Dashboard element description image



Description: Image for dashboard element description

CSS classes: .wizard_top_icon, img

Dashboard element tips

During startup you may be required to provide the following AppWave address:

Description: Dashboard element tips

CSS classes: .wizard_tips

Dashboard element tips item

Host: 192.168.1.100:81

Port: 81

Description: Dashboard element tips item

CSS classes: .wizard_item

Users (viewUsers.spg)



Description: Common style for this page

CSS classes: .bodyText

Users header



Description: Style for header

CSS classes: .bodyText h1

Users form search



Description: Style for search form

CSS classes: .searchPad

Users form search label

Search for:

Description: Style for search form label

CSS classes: .filterLabel

Users results table

User Name
 <u>admin</u> 

Description: Style for users results table

CSS classes: .downloads_table

REPLACING THE IMAGES IN THE APPWAVE ADMIN USER INTERFACE

The following describes the images that you can replace with your own. These descriptions are presented in the following format and images in the same area are grouped according to the page they appear on when applicable:

Number: The number is used to assist you when the same image is used in multiple locations in the interface.

Picture: The actual image you can replace.

Path: The name of the image and the directory where the image is located.

Description: A brief description of the image.

CSS class: If relevant, the class that defines this image in the *theme.css* file.

LOGO



Path: aaserver/images/logo_new.gif

Description: Logotip of company

MENU



Path: aaserver/images/Products16.png

Description: Picture top of menu with inscription APPWAVE

CSS class: #menuProductsAdministration

3



Path: aaserver/images/UpdateProductCatalog16.png

Description: Dashboard

CSS class: #menuUpdateProductCatalog

4



Path: aaserver/images/UsersGroups16.png

Description: MANAGE USERS & GROUPS

CSS class: #menuUsersAdministration

5



Path: aaserver/images/EditRemoveUsers16.png

Description: Users

CSS class: #menuViewEditUsers

6



Path: aaserver/images/EditRemoveGroups16.png

Description: Groups

CSS class: #menuEditRemoveGroups

7



Path: aaserver/images/LDAP16.png

Description: LDAP

CSS class: #menuEditRemoveGroups

8



Path: aaserver/images/Folders.gif

Description: MANAGE FOLDERS

CSS class: #menuFoldersAdministration

9



Path: aaserver/images/folder.gif

Description: All Apps, All Access, Communications, Database Tools, and Developer Tools

CSS class: #menuFolderView

10



Path: aaserver/images/ViewRemoveConfigurations16.png

Description: App Folders

CSS class: #menuFoldersView

11



Path: aaserver/images/Products16.png, same as 2

Description: MANAGE APPS

CSS class: #menuProductsAdministration

12



Path: aaserver/images/ViewProducts16.png

Description: App Inventory

CSS class: #menuViewProducts

13



Path: aaserver/images/UpdateProductCatalog16.png, same as 3

Description: Version Updates

CSS class: #menuUpdateProductCatalog

14



Path: aaserver/images/CachingProgress16.png

Description: Download Progress

CSS class: #menuUpdateProductCatalog

15



Path: aaserver/images/ViewProducts16.png, same as 12

Description: App Inventory

Description: Moderate Reviews

CSS class: #menuProductReviews

16



Path: aaserver/images/ViewProducts16.png, same as 12

Description: App Inventory

Description: Banners Management

CSS class: #bannersManagement

17



Path: aaserver/images/ViewProducts16.png, same as 12

Description: App Inventory

Description: Email Direct Marketing

CSS class: #edmConfig

18



Path: aaserver/images/Licenses16.png

Description: MANAGE LICENSES

CSS class: #menuMainLicenses

19



Path: aaserver/images/CurrentLicenses16.png

Description: License Inventory

CSS class: #menuLicenses

20



Path: aaserver/images/EditRemoveUsers16.png, same as 5

Description: License Assignments

CSS class: #menuLicenseAssignments

21



Path: aaserver/images/CurrentLicenses16.png, same as 19

Description: License Automation

CSS class: #menuLicenseAutomation

22



Path: aaserver/images/EditRemoveGroups16.png, same as 6

Description: Connected Users

CSS class: #menuConnectedUsers

23



Path: aaserver/images/ConfigurationManagement16.png

Description: SYSTEM MANAGEMENT

CSS class: #menuMainSysParam

24



Path: aaserver/images/ViewRemoveConfigurations16.png

Description: Service Status

CSS class: #menuParamSystem

25



Path: aaserver/images/ViewRemoveConfigurations16.png, same as 24

Description: System Properties

CSS class: #menuParamSystem

26



Path: aaserver/images/ViewRemoveConfigurations16.png, same as 24

Description: Streaming Service

CSS class: #menuParamStreaming

27



Path: aaserver/images/ViewRemoveConfigurations16.png, same as 24

Description: Backup License Server

CSS class: #menuParamSystem

28



Path: aaserver/images/Reports16.gif

Description: REPORTING

CSS class: #menuReporting

29



Path: aaserver/images/Reports16.gif, same as 28

Description: Reports

CSS class: #menuParamStatistics

WELCOME TO EMBARCADERO APPWAVE DASHBOARD

welcome.spg

30



Path: aaserver/images/Overlay-ok.gif

Description: service online

31



Path: aaserver/images/Overlay-block.gif

Description: Service block

32



Path: aaserver/images/Overlay-Warning.gif

Description: Service warning

33



Path: aaserver/icons/Icon_AllAccess_32.png

Description: Download AppWave Browser

34



Path: aaserver/images/App-info.gif

Description: Section is available

35



Path: aaserver/images/ViewRemoveConfigurations.png

Description: Service Status

36



Path: aaserver/images/EmbarcaderoLicense.png

Description: Set up licenses

37



Path: aaserver/images/App-block.gif

Description: Section is not available

38



Path: aaserver/images/download1.gif

Description: Download applications

39



Path: aaserver/images/ViewRemoveConfigurations.png, same as 35

Description: Manage mastering plugins

40



Path: aaserver/images/LDAP.png

Description: Import LDAP users and groups

41



Path: aaserver/images/App-warn.gif

Description: Warning section

42



Path: aaserver/images/EditRemoveUsers.png

Description: Change admin password

43



Path: aaserver/images/UpdateProductCatalog.png

Description: Update application catalog configuration

44



Path: aaserver/images/App-ok.gif

Description: Configured successful

45



Path: aaserver/images/Computer.gif

Description: Manage disk space

46



Path: aaserver/images/Disc-Ok.gif

Description: Show Disk Space Ok

47



Path: aaserver/images/Disc-Warn.gif

Description: Show Disk Space warning

48



Path: aaserver/images/Disc-Info.gif

Description: Show Disk Space Info

49



Path: aaserver/images/backupServer.gif

Description: Set up backup license server

50



Path: aaserver/images/ViewProducts.png

Description: Main picture for Welcome to Embarcadero AppWave Dashboard

USER

viewUsers.spg

51



Path: aaserver/images/EditRemoveUsers.png, same as 42

Description: Main picture for Users Section

52



Path: aaserver/images/user.png

Description: User in list

53



Path: aaserver/images/edit.gif

Description: Edit user

VIEW USER

viewUser.spg?id=<userID>)

54



Path: aaserver/images/EditRemoveUsers.png, same as 42

Description: Main picture for Users Section

55



Path: aaserver/images/group.png

Description: Member of group picture

56



Path: aaserver/images/ConfigurationManagement16.png, same as 23

Description: Folders owner picture

57



Path: aaserver/images/CurrentLicenses16.png, same as 19

Description: Licenses

EDIT USER

editUser.spg?embtUsrId=<userID>

58



Path: aaserver/images/CreateGroups16.png

Description: Add Groups, Add Folders

59



Path: aaserver/images/destroy.gif

Description: Remove All

ADD CONCURRENT USERS

addLicenseUsers.spg?licenseType=Concurrent&targetId=<userID>&targetType=USER

60



Path: aaserver/images/CreateGroups.png

Description: Add Concurrent Users main Picture

61



Path: aaserver/images/cancel.gif

Description: Permissions Deny

62



Path: aaserver/images/action_check.gif

Description: Permissions Allow

63



Path: aaserver/images/RetrieveLicense16.png

Description: Add Licenses

ADD NAMED USERS

addLicenseUsers.spg?licenseType=Named&targetId=<userId>&targetType=USER

64



Path: aaserver/images/CreateUsers.png

Description: Add Named Users main Picture

IMPORT USERS

userImport.spg

65



Path: aaserver/images/CreateUsers.png, same as 64

Description: Main picture for Import Users Section

CREATE USER

editUser.spg

66



Path: aaserver/images/CreateUsers.png, same as 64

Description: Main picture for Create User Section

MANAGE GROUPS

viewUserGroups.spg

67



Path: aaserver/images/EditRemoveGroups.png

Description: Main picture for Manage Groups

CREATE GROUP

editUserGroup.spg

68



Path: aaserver/images/CreateGroups.png, same as 60

Description: Main picture for Create Group

LDAP USERS & GROUPS

ldapImport.spg

69



Path: aaserver/images/LDAP.png, same as 40

Description: Main picture for LDAP Users & Groups

VIEW FOLDER

viewFolder.spg?id=<folderID>

70



Path: aaserver/images/ViewRemoveConfigurations.png, same as 35

Description: Main picture for View Folder

71



Path: aaserver/images/EditRemoveGroups16.png, same as 6

Description: Assignment concurrent users

72



Path: aaserver/images/EditRemoveUsers16.png, same as 5

Description: Assignment named users

73



Path: aaserver/images/warning20.png

Description: Warning message

CSS class: .warningMessages li

74



Path: aaserver/images/expand_text.png

Description: View all application

75



Path: aaserver/images/collapse_text.png

Description: Close the detail applications

EDIT FOLDER

`editFolder.spg?id=<folderID>`

76



Path: aaserver/images/ViewRemoveConfigurations.png, same as 35

Description: Main picture for Edit Folder

APP FOLDERS

viewAllFolders.spg

77



Path: aaserver/images/ViewRemoveConfigurations.png, same as 35

Description: Main picture for App Folders

78



Path: aaserver/images/warning20.png, same as 73

Description: Folder Status Warning

79



Path: aaserver/images/check20.gif

Description: Folder status OK

APP INVENTORY

tools.spg

80



Path: aaserver/images/ViewProducts.png, same as 50

Description: Main picture for App Inventory

81



Path: aaserver/images/warning20.png, same as 73

Description: App internet available

82



Path: aaserver/images/check.png

Description: App available

83



Path: aaserver/images/wrench.gif

Description: Build configure

84



Path: aaserver/images/error20.png

Description: Not streamed on any service

85



Path: aaserver/images/stream.png

Description: Start streaming

86



Path: aaserver/images/unstream.png

Description: Stop streaming

87



Path: aaserver/images/info20.png

Description: Inprogress publish/unpublish

88



Path: aaserver/images/download_start.gif

Description: Resume download

89



Path: aaserver/images/download_pause.gif

Description: Pause download

90



Path: aaserver/images/download_stop.gif

Description: Stop download

91



Path: aaserver/images/download.png

Description: Download App

92



Path: aaserver/images/upload.png

Description: Upload App

93



Path: aaserver/images/action_check.gif, same as 62

Description: Inactive state

94



Path: aaserver/images/download_disabled.png

Description: Download disable

95



Path: aaserver/images/destroy.gif, same as 59

Description: Delete binaries

VERSION UPDATES

updateProductCatalog.spg

96



Path: aaserver/images/UpdateProductCatalog.png, same as 46

Description: Main picture for Version Updates

97



Path: aaserver/images/icon_expand_all.gif

Description: Expand list app for customizing

98



Path: aaserver/images/icon_collapse_all.gif

Description: Collapse list app for customizing

99



Path: aaserver/images/img_select_all.gif

Description: Select all

100



Path: aaserver/images/img_select_none.gif

Description: Select none

101



Path: aaserver/images/Web-ok.png

Description: Test connection to appwave.embarcadero.com is successful

102



Path: aaserver/images/Web-block.png

Description: Cannot establish connection

DOWNLOAD HISTORY

downloadApplications.spg

103



Path: aaserver/images/CachingProgress.png

Description: Main picture for Download History

MODERATE REVIEWS

searchReviews.spg

104



Path: aaserver/images/ViewProducts.png, same as 53

Description: Main picture for Moderate Reviews

105



Path: aaserver/images/thumb_up.gif

Description: Like review

106



Path: aaserver/images/thumb_down.gif

Description: Dislike review

107



Path: aaserver/images/cancel.gif, same as 61

Description: Reject review

108



Path: aaserver/images/action_delete.gif

Description: Delete forever

109



Path: aaserver/images/stars1.gif

Description: Rating 1 star

110



Path: aaserver/images/stars2.gif

Description: Rating 2 stars

111



Path: aaserver/images/stars3.gif

Description: Rating 3 stars

112



Path: aaserver/images/stars4.gif

Description: Rating 4 stars

113



Path: aaserver/images/stars5.gif

Description: Rating 5 stars

BANNERS MANAGEMENT

bannersManagement.spg

114



Path: aaserver/images/ViewProducts.png, same as 50

Description: Main picture for Banners Management

115



Path: aaserver/images/edit.gif, same as 53

Description: Edit Banner

EMAIL DIRECT MARKETING

edmConfig.spg

116



Path: aaserver/images/ViewProducts.png, same as 50

Description: Main picture for Email Direct Marketing

LICENSE INVENTORY

licenses.spg

117



Path: aaserver/images/CurrentLicenses.png

Description: Main picture for License Inventory

LICENSE FILES

viewLicenses.spg

118



Path: aaserver/images/CurrentLicenses.png, same as 117

Description: Main picture for License Files

119



Path: aaserver/images/download.png, same as 91

Description: Update this license

120



Path: aaserver/images/destroy.gif, same as 59

Description: Delete this license

RETRIEVE LICENSE

requestLicense.spkg

121



Path: aaserver/images/RetrieveLicense.png

Description: Main picture for Retrieve License

122



Path: aaserver/images/warning20.png, same as 73

Description: No backup license server configured.

SET TRIAL OWNER

requestTrialLicense.spkg

123



Path: aaserver/images/RetrieveLicense.png, same as 121

Description: Main picture for Set trial owner

THIRD PARTY LICENSES

3rdPartyLics.spkg

124



Path: aaserver/images/ViewProducts.png, same as 50

Description: Main picture for Third Party Licenses

125



Path: aaserver/images/edit.gif, same as 53

Description: Edit entry

LICENSE ASSIGNMENTS

licenseAssignments.spg

126



Path: aaserver/images/EditRemoveUsers.png, same as 42

Description: Main picture for License Assignments

127



Path: aaserver/images/EditRemoveGroups.png, same as 67

Description: Concurrent licenses management

128



Path: aaserver/images/EditRemoveGroups.png, same as 67

Description: Permissions for concurrent licenses

129



Path: aaserver/images/CurrentLicenses.png, same as 117

Description: Valid IPs for concurrent licenses

130



Path: aaserver/images/ViewRemoveConfigurations.png, same as 35

Description: Reservations for concurrent licenses

131



Path: aaserver/images/EditRemoveUsers.png, same as 42

Description: Named licenses management

132



Path: aaserver/images/workstation.png

Description: Workstation licenses management

133



Path: aaserver/images/workstation.png, same as 132

Description: Permissions for workstation licenses (concurrent only)

134



Path: aaserver/images/ViewRemoveConfigurations.png, same as 35

Description: Reservations for workstation licenses

CONCURRENT USERS, NAMED USERS, AND WORKSTATION PERMISSIONS

concurrentUsers.spg, namedUsers.spg, workstationPermissions.spg

135



Path: aaserver/images/CreateGroups.png, same as 60

Description: Main picture for Concurrent Users

136



Path: aaserver/images/user.png, same as 55

Description: User icon

137



Path: aaserver/images/action_check.gif, same as 62

Description: Permissions allow

138



Path: aaserver/images/cancel.gif, same as 61

Description: Permissions deny

139



Path: aaserver/images/edit.gif, same as 56

Description: Edit entry

140



Path: aaserver/images/destroy.gif, same as 59

Description: Delete entry

VALID IPS

iplist.spg

141



Path: aaserver/images/CurrentLicenses.png, same as 117

Description: Main picture for Valid IPs

142



Path: aaserver/images/img_select_all.gif. same as 99

Description: Select all

143



Path: aaserver/images/img_select_none.gif, same as 100

Description: Select none

144



Path: aaserver/images/action_add.gif

Description: Add new IP

RESERVATIONS AND WORKSTATION RESERVATIONS

reservations.spkg and **workstationReservations.spkg**

145



Path: aaserver/images/ViewRemoveConfigurations.png, same as 35

Description: Main picture for Reservations

146



Path: aaserver/images/edit.gif, same as 53

Description: Edit entry

147



Path: aaserver/images/destroy.gif, same as 59

Description: Delete entry

AUTO ACTIVATION LICENSES

3rdPartyLics.spkg?scope=autoActivation

148



Path: aaserver/images/ViewProducts.png, same as 50

Description: Main picture for Auto Activation Licenses

149



Path: aaserver/images/edit.gif, same as 53

Description: Edit entry

CONNECTED USERS

connectedUsers.spq

150



Path: aaserver/images/CreateGroups.png, same as 60

Description: Main picture for Connected Users

151



Path: aaserver/images/user.png, same as 52

Description: User

152



Path: aaserver/images/EmbarcaderoLicense16.png

Description: Embarcadero licemse

SERVICE STATUS

serverStatus.spq

153



Path: aaserver/images/ViewProducts.png, same as 50

Description: Main picture for Service Status

154



Path: aaserver/images/Overlay-ok.gif, same as 30

Description: Service status OK

155



Path: aaserver/images/Overlay-block.gif, same as 31

Description: Service status not available

156



Path: aaserver/images/Overlay-Warning.gif, same as 32

Description: Service status warning

SET UP LICENSES

welcome.spg?license=1

157



Path: aaserver/images/CurrentLicenses.png, same as 117

Description: Main picture for Set Up License

158



Path: aaserver/images/RetrieveLicense.png, same as 121

Description: Retrieve licenses

159



Path: aaserver/images/RetrieveLicense.png, same as 121

Description: Set trial owner

160



Path: aaserver/images/ImportLicensesNew.png

Description: Manual import licenses

SYSTEM PROPERTIES EMAIL

smtp.spg

161



Path: aaserver/images/ViewRemoveConfigurations.png, same as 35

Description: Main picture for System Properties

162



Path: aaserver/images/emailAdding.gif

Description: Add new email

163



Path: aaserver/images/action_add.gif, same as 144

Description: Add

STREAMING SERVICE

streamingDashboard.spg

164



Path: aaserver/images/UpdateProductCatalog.png, same as 43

Description: Main picture for Streaming Service

165



Path: aaserver/images/start_green_rnd.png

Description: Start streaming

166



Path: aaserver/images/stop_red_rnd.png

Description: Stop streaming

PUBLISHING PROGRESS

publishingProgress.spg

167



Path: aaserver/images/CachingProgress.png, same as 103

Description: Main picture for Publishing Progress

APPWAVE BACKUP SETUP

welcome.spg?backupServerSetup=1

168



Path: aaserver/images/backupServer.gif, same as 49

Description: Main picture for AppWave Backup Setup

169



Path: aaserver/images/backupServer.gif, same as 49

Description: Configure the backup license server

170



Path: aaserver/images/backupServer.gif, same as 49

Description: Set AppWave as backup license server

171



Path: aaserver/images/App-ok.gif, same as 44

Description: Server is configured

172



Path: aaserver/images/App-info.gif, same as 34

Description: Server is not configured

REPORTS

statisticsMain.spq

173



Path: aaserver/images/Reports.gif

Description: Main picture for Reports

174



Path: aaserver/images/Reports.gif, same as 173

Description: License app report

175



Path: aaserver/images/EditRemoveUsers.png, same as 42

Description: Streamed app report

NOTIFICATIONS

notifications.spq

176



Path: aaserver/images/Notifications.png

Description: Main picture for Notification

177



Path: aaserver/images/double_check.gif

Description: Mark all as read

178



Path: aaserver/images/double_X.gif

Description: Delete all

179



Path: aaserver/images/gtk-delete.png

Description: View deleted

180



Path: aaserver/images/StartWatching.gif

Description: Mark as read

181



Path: aaserver/images/action_delete.gif, same as 108

Description: Delete notification

HOME PAGE

home.spg

182



Path: aaserver/images/appwave-overview.jpg

Description: Banner in home page

BACKGROUND

180



Path: aaserver/images/body_bg.gif

Description: Background image

CSS class: body

NEW FEATURES OF APPWAVE 4.0

The following describe the new features of AppWave 4.0:

- [AppWave Enterprise Store](#)
 - [AppWave Enterprise Store Catalog](#)
 - [New Reports](#)
 - [Installer](#)
 - [Browsing the App Catalog](#)
- [AppWave Public Store](#)
- [AppWave Enterprise Store](#)
 - [Progress Feedback](#)
 - [Smart App Links](#)
 - [Colored and Labeled Buttons](#)
 - [Information Displayed on Hover](#)
 - [App Channel Layout](#)
 - [WebApps Support](#)
- [AppWave Studio](#)
 - [Open for Upgrade](#)
 - [Smart App Links](#)

APPWAVE ENTERPRISE STORE

The AppWave Enterprise Store is for PC software and gives your organization fast and easy access to software. Your end users can search, browse, and run Windows software immediately. You can also view the top apps for each category as well as overall.

APPWAVE ENTERPRISE STORE CATALOG

The AppWave Enterprise Store Catalog consists of alternating scrollable "top 10" sections interleaved with advertising banners

The apps are displayed in the following categories:

- **Average Rating** (from highest to lowest) of apps available on the Enterprise store
- **Download Popularity** (from most downloaded to least) of apps available on the Enterprise store
- **Time on System** (from newest to oldest) of apps available on the Enterprise store

The AppWave Enterprise Store catalog features banner placements to promote specific apps. The administrator has access to an interface that allows him to select which apps within the Enterprise store to promote. The apps can have, as part of their metadata included during the mastering process, pre-built ad banners to display on the home page.

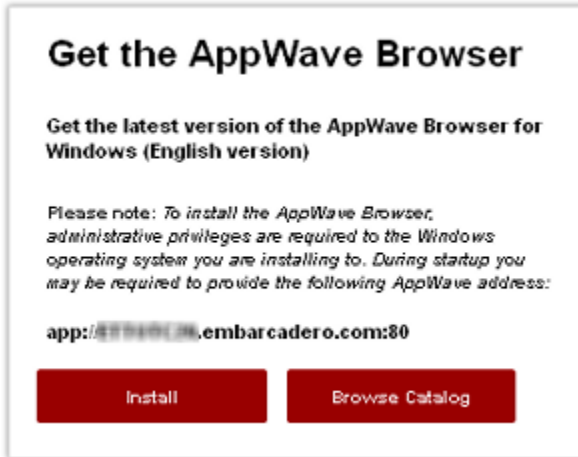
BROWSING THE APP CATALOG

On the AppWave Enterprise Store Admin Console you can browse the app catalog in much the same way as you would browse the AppWave Public Store.

Access the Catalog from the Admin Dashboard.



Access the Catalog from the AppWave Home page.



- 1 From the AppWave Dashboard or from the AppWave Home page, click **BROWSE CATALOG** and a catalog similar to the following appears.



You can give your users the URL to this catalog, without rising your security. The URL format is as follows: `http://<your AppWave name>:<port number>/catalog.html`.

From the AppWave catalog, users can browser for applications, view app details, and run apps. If they do not have AppWave Browser already installed, the user has the option to download the AppWave launcher and install AppWave Browser.

The screenshot displays the AppWave Enterprise Store interface. At the top, the Embarcadero logo is on the left, and navigation links for 'WELCOME admin', 'NOTIFICATIONS', 'HOME', 'BROWSE CATALOG', and 'Help' are on the right. The main content area features the 'appwave' logo and a search bar. A sidebar on the left lists various application categories: Home, All Apps, All-Access, Communications, Database Tools, Developer Tools, Education, IDEs, Media Applications, Popular, Productivity, and Utility. The main content area is titled '3nity Media Player 2.1.0' with a 'RUN' button. Below the title are tabs for 'Overview', 'Details', 'Reviews', and 'Versions'. A preview window shows the media player interface with a penguin icon. To the right of the preview is an 'Application Description' section. At the bottom, there are links for 'Home | Legal' and a copyright notice: '© Copyright 2012 Embarcadero Technologies, Inc. All Rights Reserved.'

- 2 The administrator can return to the AppWave Dashboard by clicking the browser back button.

NEW REPORTS

As Administrator, you can track software usage so you know what software to maintain and support.

New usage reports allows you to monitor usage of streamed apps, including free apps that use workstation licensing. The following **Cumulative Reports for Streamed Apps** are available:

Cumulative Reports - Streamed Apps	
Streamed application usage aggregated over a defined time range. Does not include locally installed apps.	
	<u>Streamed Application Usage Frequency Report</u> Number of times each streamed application was used by a specified user or group of users during the specified time range.
	<u>Streamed Application Usage Duration Report</u> Total number of hours each streamed application was used for the specified period. Applications that were not used are excluded.
	<u>Streamed Application Usage Duration by User Report</u> Total number of hours a streamed application was used by each user and group for the specified period.

- [Streamed Application Usage Frequency Report](#) - Number of times each streamed application was used by a specified user or group of users during the specified time range.
- [Streamed Application Usage Duration Report](#) - Total number of hours each streamed application was used for the specified period. Streamed application that were not used are excluded.
- [Streamed Application Usage Duration by User Report](#) - Total number of hours a streamed application was used by each user and group for the specified period.

NOTE: The AppWave Enterprise Store does not monitor the use of locally installed apps such as those used offline.

STREAMED APPLICATION USAGE FREQUENCY REPORT

Shows the number of times each streamed application was used by a specified user or group of users during the specified time range.

Streamed Application Usage Frequency Report

Number of times each application was used by a specified user or group of users during the specified time range.

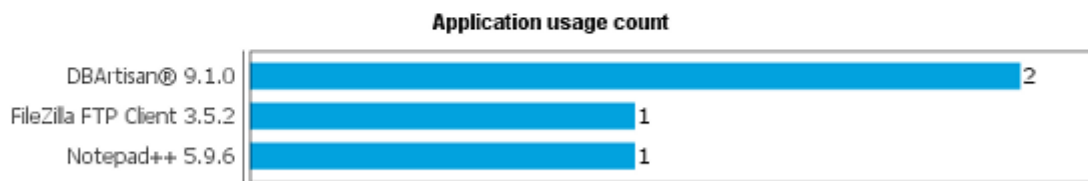
Start date:
End date:
User/Group:

Type existing user or group name.

Time zone:

Statistic:
Include weekends:

Percentage:



View report in a tabular form and export it in CSV format

STREAMED APPLICATION USAGE DURATION REPORT

Shows the total number of hours each streamed application was used for the specified period. Applications that were not used are excluded.

Streamed Application Usage Duration Report

Total number of hours each application was used for the specified period. Applications that were not used are excluded.

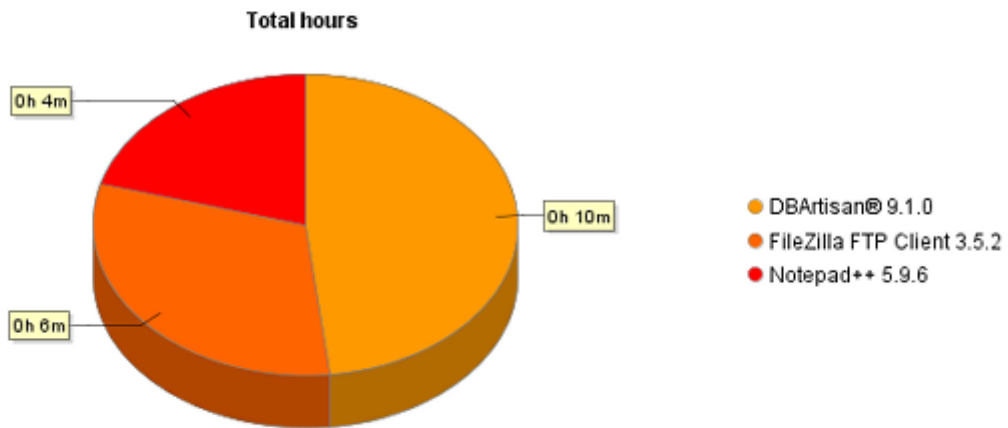
Start date:
End date:
User/Group: 


Type existing user or group name.

Time zone:

Statistic:
Include weekends:

Percentage:



View report in a tabular form and export it in CSV format 

STREAMED APPLICATION USAGE DURATION BY USER REPORT

Shows the total number of hours a streamed application was used by each user and group for the specified period.

Streamed Application Usage Duration by User Report

Total number of hours an application was used by each user and group for the specified period.

Start date: End date:

Time zone:

Application:

User/Group	Total Hours Used	Percent Hourly Usage
All Users	0h 28m 58s	0.00%
KathyB	0h 10m 30s	0.00%
jacquelinef	0h 28m 58s	0.00%

INSTALLER

Changes to the AppWave Browser installer affects AppWave Enterprise Store users and administrators.

AppWave Browser users now see a new progress bar (0 - 100%) that clearly informs the user of the installation progress.



APPWAVE PUBLIC STORE

Many improvements have been made to the user interface. These changes are described below:

INSTALLER

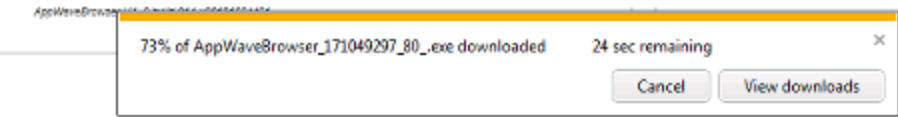
Users can now see the download progress of the AppWave Browser installer.

Get the AppWave Browser

Get the latest version of the AppWave Browser for Windows (English version)

Please note: To install the AppWave Browser, administrative privileges are required to the Windows operating system you are installing to. During startup you may be required to provide the following AppWave address:

app://

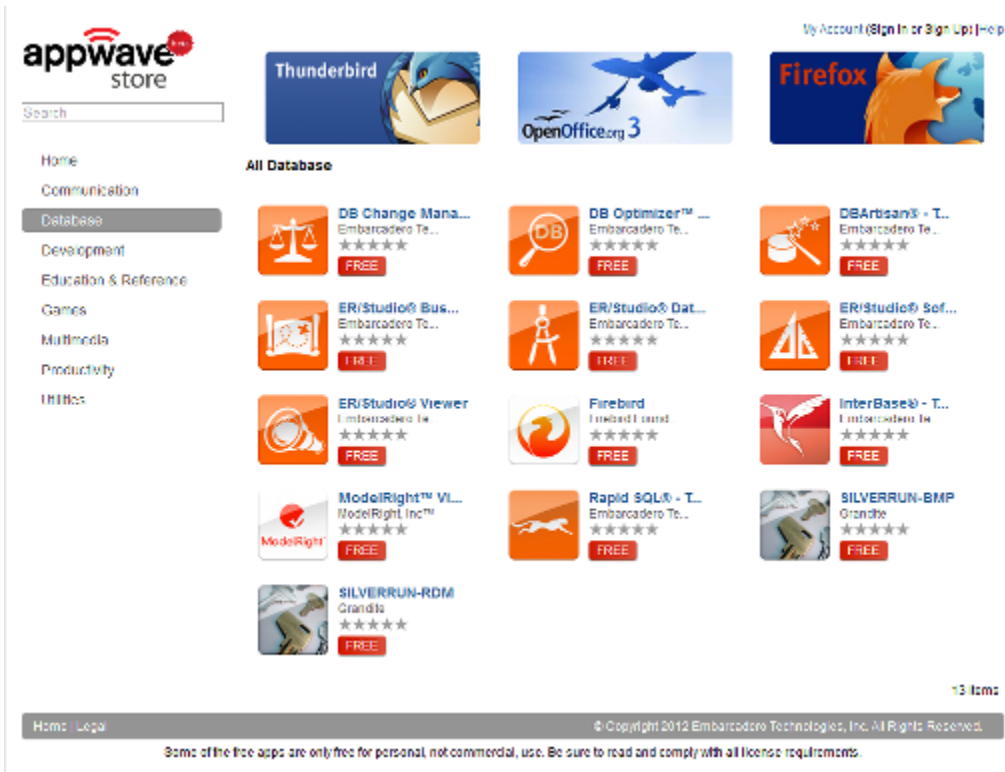


APPWAVE PUBLIC STORE DESIGN

The AppWave Public Store features a new look.



APP LISTINGS DISPLAYED IN GRID VIEW



HOVERING MOUSE OVER AN APP LISTING DISPLAYS APP DETAILS


All Database



APP CHANNEL HAS THREE TABS

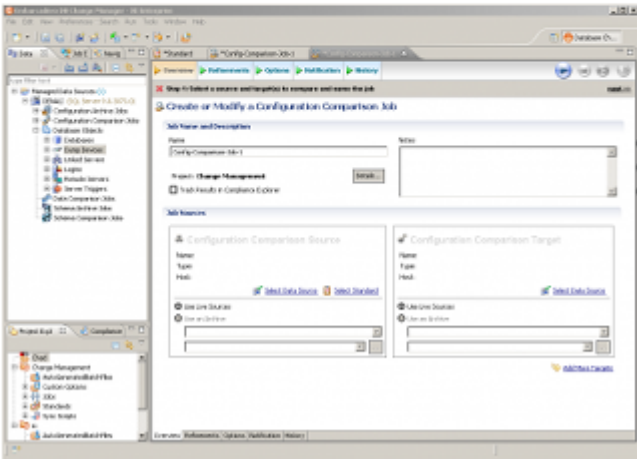
Overview tab: When clicked, the screen shot expands in an overlay showing the app and the app description.

[My Account \(Sign In or Sign Up\)](#) | [Help](#)



DB Change Manager™ - Trial
Version: 6.0.1 | License: Free
★★★★★ | Database | Embarcadero Technologies, Inc. | 21 Users
FREE

Overview
Details
Reviews



Application Description

Embarcadero® DB Change Manager™ XE helps database administrators and developers:


- Simplify, automate, and report on database changes
- Streamline development cycles
- Ensure availability, performance, and compliance

DB Change Manager XE's compare, synchronization, and auditing capabilities let you track and report on changes, roll out new releases, and pinpoint performance problems resulting from changes in data, schema and database configuration. By comparing a live database to a schema or configuration "snapshot" administrators can quickly identify changes and correct problems. And by monitoring configuration settings, DBAs can ensure compliance with regulatory policies and performance standards, and maintain overall database performance.

Details tab: A description of the app, including app details, version, and requirements.

[My Account \(Sign In or Sign Up\)](#) | [Help](#)

[✉](#) [in](#) [f](#) [t](#) [v](#) [←](#)



DB Change Manager™ - Trial

Version: 6.0.1 | License: Free
★★★★★ | Database | Embarcadero Technologies, Inc. | 21 Users

FREE

Overview**Details**Reviews

Application Description

Embarcadero® DB Change Manager™ XE helps database administrators and developers:

- Simplify, automate, and report on database changes
- Streamline development cycles
- Ensure availability, performance, and compliance

DB Change Manager XE's compare, synchronization, and auditing capabilities let you track and report on changes, roll out new releases, and pinpoint performance problems resulting from changes in data, schema and database configuration. By comparing a live database to a schema or configuration "snapshot" administrators can quickly identify changes and correct problems. And by monitoring configuration settings, DBAs can ensure compliance with regulatory policies and performance standards, and maintain overall database performance.

Application Details

Application Name:
DB Change Manager™ - Trial

Updated:
05-01-12

Current Version:
6.0.1

App Size:
257.47MB

Categories:
Database

Languages:
ENGLISH


Developer:
Embarcadero Technologies, Inc.

Requirements:
Windows® XP Professional, Windows Server 2003, Windows Server 2008, Windows Vista (Ultimate and Business), Windows 7 (32-bit and 64-bit architecture).

Reviews tab: Reviews for the app as well as the ability to create a review.

[Jacquie's Account](#) | [Sign Out](#) | [Help](#)

[✉](#) [in](#) [f](#) [t](#) [v](#) [←](#)



DB Change Manager™ - Trial

Version: 6.0.1 | License: Free
★★★★★ | Database | Embarcadero Technologies, Inc. | 21 Users

FREE

Overview**Details****Reviews**

Rate this app

APPWAVE BROWSER

The new features for the AppWave Browser improve usability on many different levels. These features are explained below:

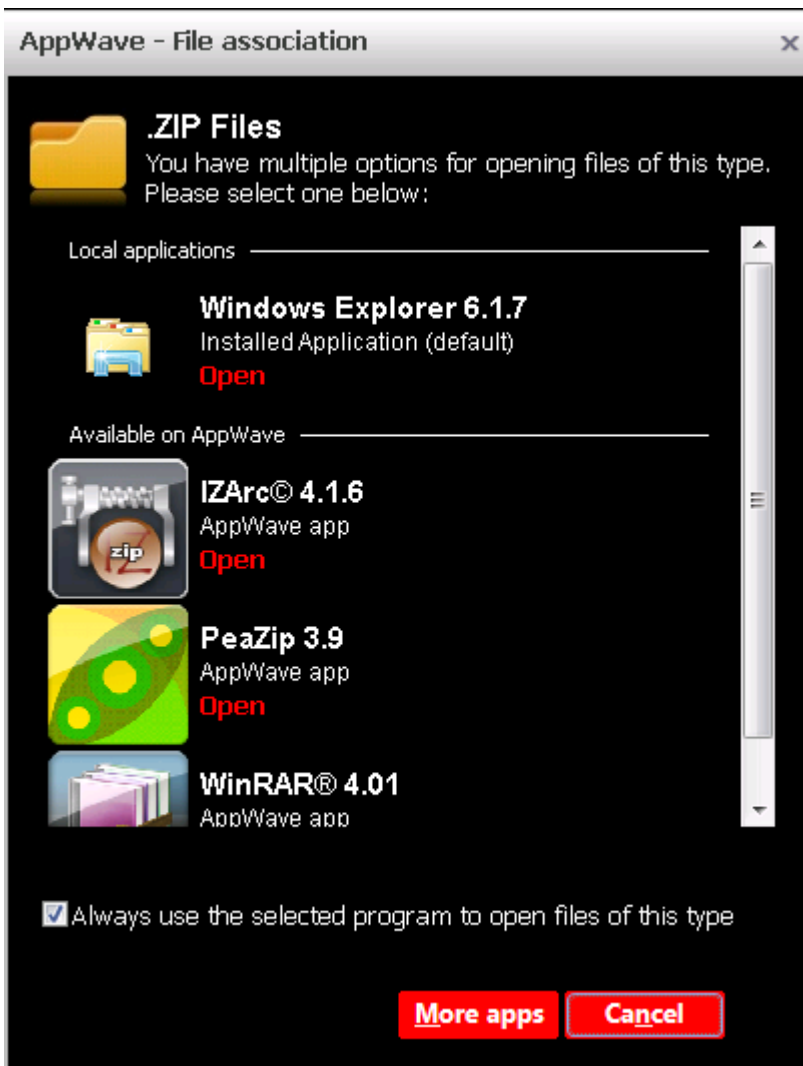
PROGRESS FEEDBACK

The Progress bar displays meaningful status text during app streaming and launch. The bottom of AppWave Browser now contains an app status bar, displaying the app name, a progress bar, and the percentage streamed. If more than one app is streaming, the progress for the app selected and displayed in the application window displays.



SMART APP LINKS

Smart App Links allow you to right-click a document and open the app associated with that document type. It also lets you, for example, from a Microsoft Outlook app email, double-click the .zip file attached and choose to open it from Microsoft Explorer, which is installed locally or from one of the compatible applications on AppWave, regardless of whether you previously ran and/or downloaded the app before.



When you try to open a file, AppWave cross references the file type with a database, retrieves a list of already installed apps that can open the file, retrieves a list of appropriate apps that can open the file, and presents a list of appropriate apps to you. This gives you the ability to immediately open the file and set a default within the same workflow regardless of if the application is already installed or not.

COLORED AND LABELED BUTTONS

New colorful buttons with meaningful labels display in the Application window.



- **Run:** Launches an app that has been cached on your private AppWave.
- **Install:** Launches the app installer. Installed apps run faster on your system and can be run when not connected to the AppWave Enterprise Store when offline license usage privileges have to been granted to the user.
- **+Add:** Add an app that is not currently available on your AppWave Enterprise Store but can be to downloaded from the Embarcadero-hosted AppWave Public to your AppWave Enterprise Store. Once available on your Enterprise AppWave, any user can then run or install the added app. Added apps are automatically bookmarked and will appear in your AppBookmarks folder. Once AppWave finishes broadcasting the app to your system, it will launch automatically and the **+Add** button for the app will change to **Run**.

NOTE: When you choose to add an app that is a member of a suite, all the apps in that suite will start downloading.
- **Downloading:** App that you have chosen to +Add is being broadcasted to your system.
- **Master:** Opens this mastering template in AppWave Studio, so you can then complete the mastering process for this app.

INFORMATION DISPLAYED ON HOVER

When you hover your mouse over an app in the Application window, more detailed app information displays.

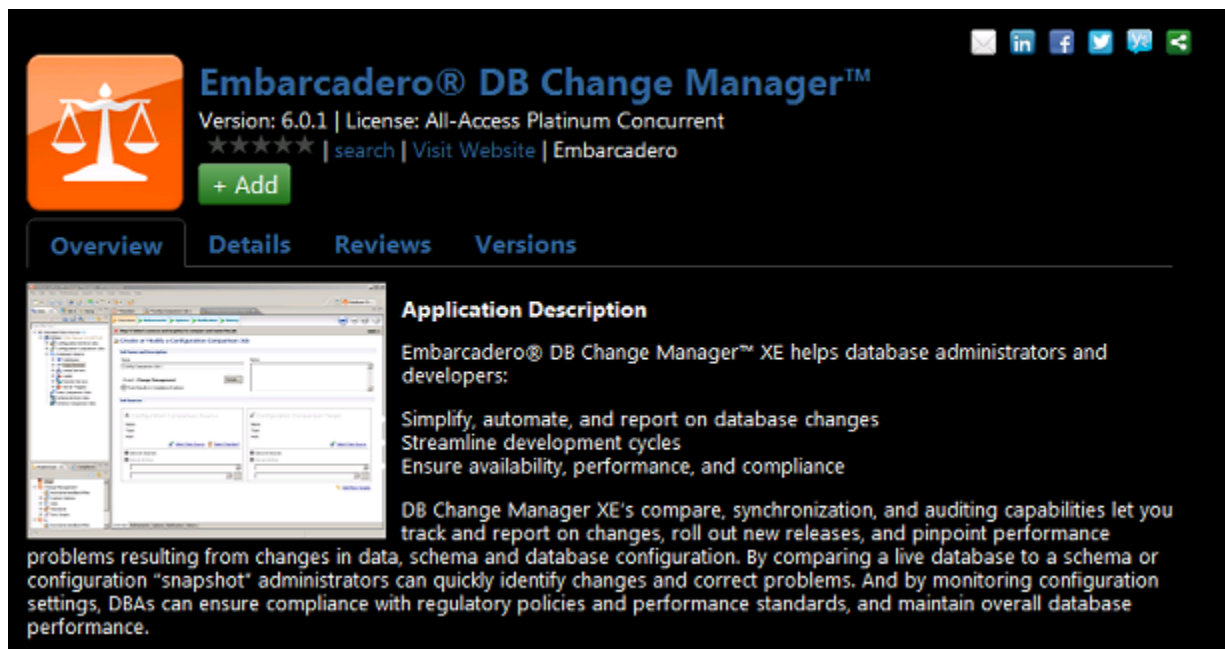


Clicking **more** displays the App Channel.

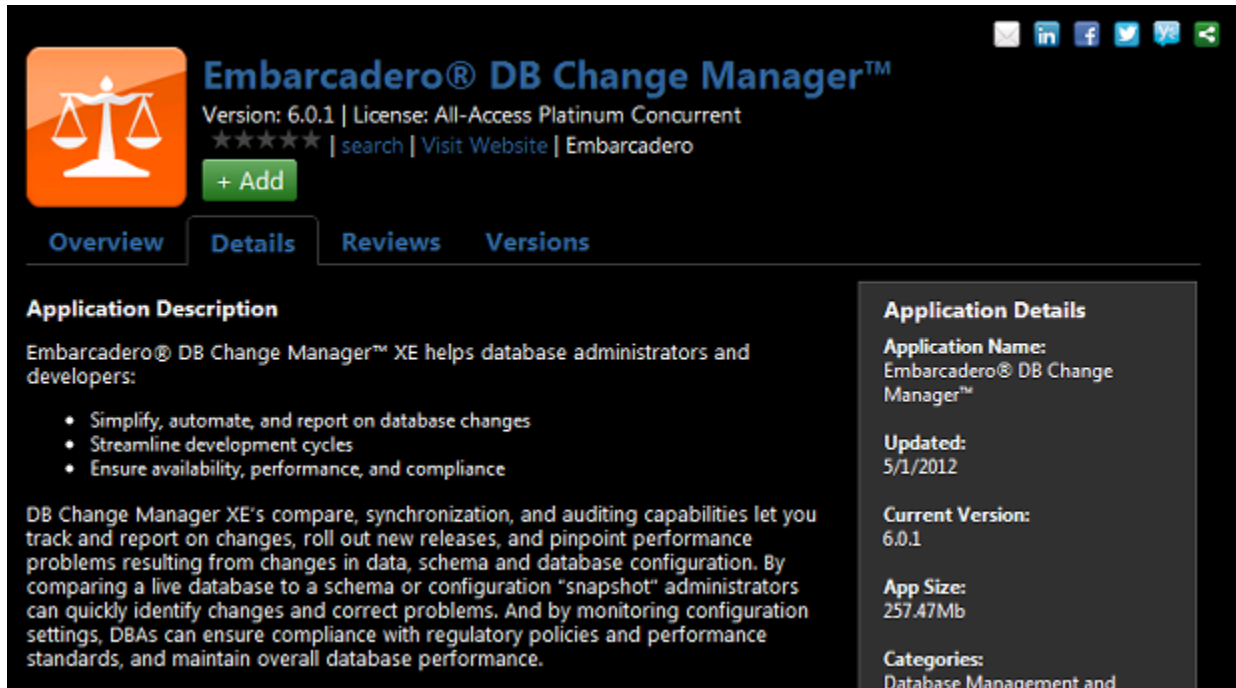
APP CHANNEL LAYOUT

App channels now include both an **Overview** tab and a **Details** tab which replaces the previous **Details** tab.

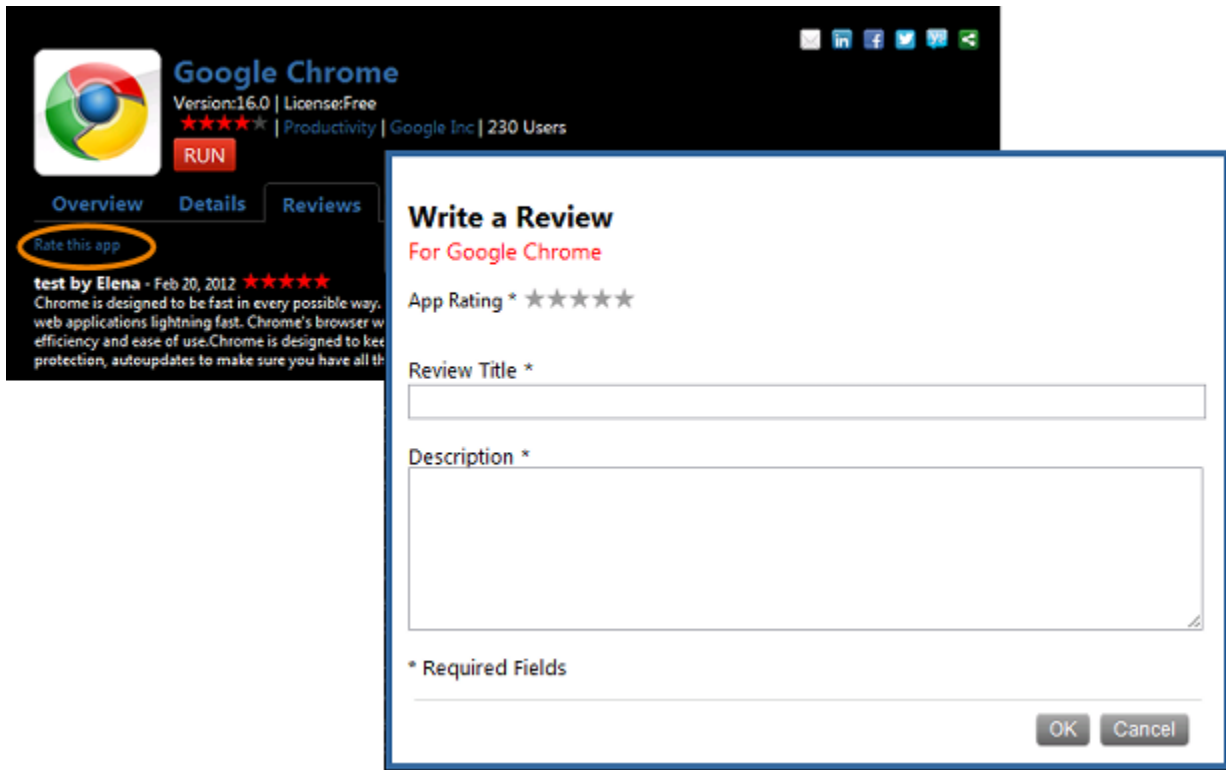
The **Overview** tab contains a screenshot of the app, along with a brief description of the app.



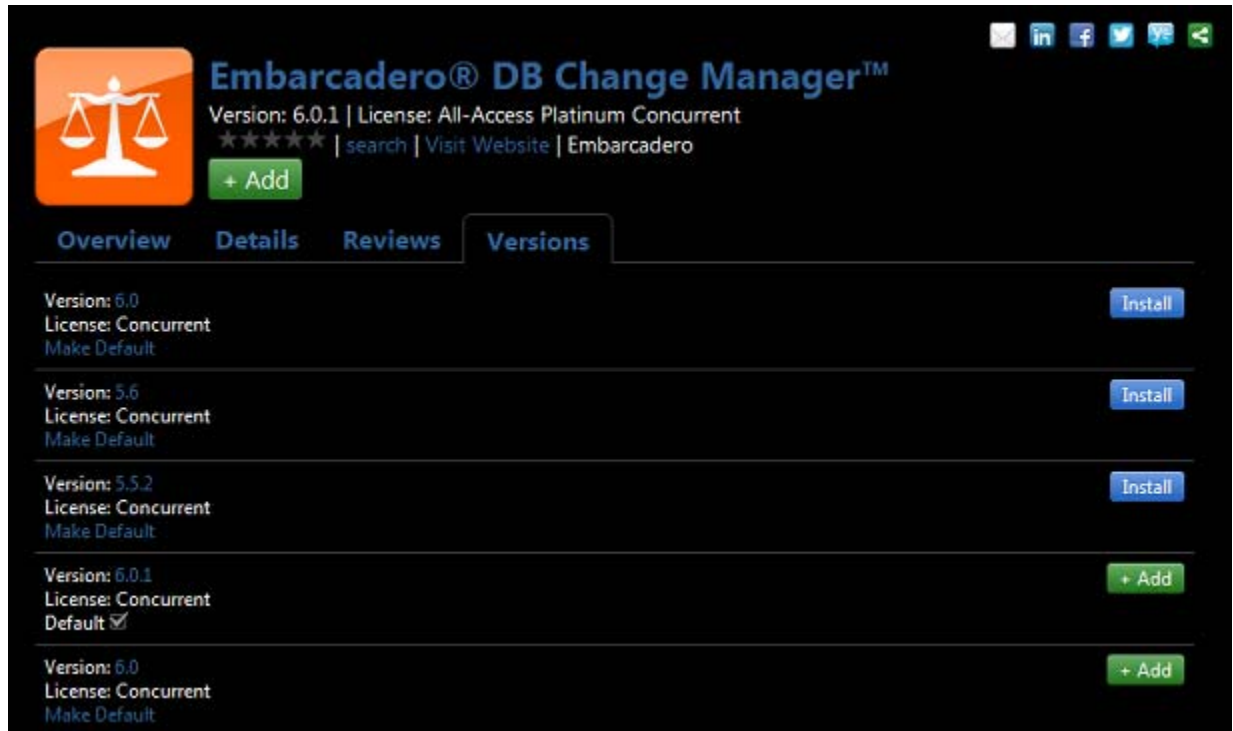
The **Details** tab now contains extensive app details including an in-depth **Application Description** and **Application Details** that can include information such as when the app was last updated, the current version, application size, search categories, available languages, and app requirements.



The App Channel also now has one **Reviews** tab that combines into one tab the previous **Reviews** and **Write a review** tabs, making it easier to read and write reviews.



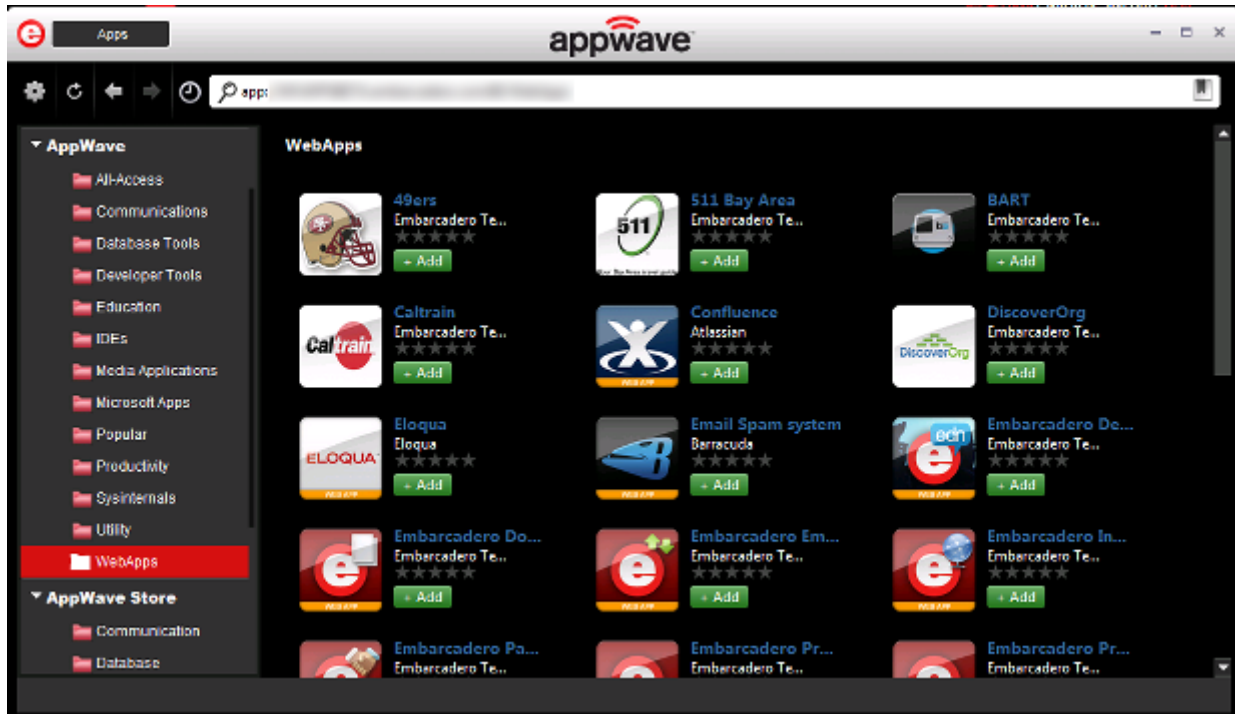
In addition, the App Channel now includes a **Versions** tab for apps with multiple versions, that lists the various versions available and allows you to set the default version and run, install, add, or master the app.



WEBAPPS SUPPORT

WebApps are applications that are accessible via an Internet Browser, typically executed on an application server either hosted by the enterprise customer directly or accessed as a "cloud" service that is hosted externally. Popular business-related WebApps include, Salesforce.com, Office Live, Microsoft Exchange (via OWA), Eloqua, and IBM/Lotus Connections. WebApp support allows your organization to provide a catalog of both internally available WebApps as well as controlled access to external WebApps. AppWave provides single click access for easy and transparent access to WebApps. The AppWave Enterprise Store catalog and its integrated licensing and reporting capabilities makes:

- AppWave Enterprise Store an ideal platform for distributing, monitoring and controlling access to WebApps for your IT department.
- AppWave Browser an ideal catalog, discovery, and rating/review interface for WebApps for users.
- AppWave Studio the ideal mastering tool for defining the parameters for the display and execution of WebApps from within AppWave Browser.



APPWAVE STUDIO

The new features and improvements are discussed below:

OPEN FOR UPGRADE

This command, available under the Gear menu icon, takes an existing .app file and extracts it onto your machine. Once it is extracted you can make changes and then remaster it. It is a very powerful tool when you want to apply a service pack or add some files to an existing mastered app.

WEBAPP SUPPORT

As mentioned in the AppWave Browser New Features section, you can now master WebApps in AppWave Studio. It is quick and easy to create a WebApp which can then be displayed and executed from within AppWave Browser.

SMART APP LINKS

Smart App Links allow you to right-click a document and open the app associated with that document type. When you open a file, AppWave cross references the file type with a database, retrieves a list of appropriate apps that can open the file, retrieves a list of already installed apps that can open the file, and presents a list of appropriate apps to you. AppWave Studio now allows the author to include file type associations (FTA) information inside the mastered app. There is also a tool available for updating already mastered apps with the new FTA information.