



Product Documentation

---

# Embarcadero® DB Optimizer™

## New Features Guide

Versions 3.6/XE 3.5  
Last Revised March, 2013

---

**CORPORATE HEADQUARTERS**  
100 CALIFORNIA STREET  
12TH FLOOR  
SAN FRANCISCO, CALIFORNIA  
94111 USA

**EMEA HEADQUARTERS**  
YORK HOUSE  
18 YORK ROAD  
MAIDENHEAD, BERKSHIRE  
SL6 1SF, UNITED KINGDOM

**ASIA-PACIFIC HEADQUARTERS**  
L7. 313 LA TROBE STREET  
MELBOURNE VIC 3000  
AUSTRALIA

© 2012 Embarcadero Technologies, Inc. Embarcadero, the Embarcadero Technologies logos, and all other Embarcadero Technologies product or service names are trademarks or registered trademarks of Embarcadero Technologies, Inc. All other trademarks are property of their respective owners.

This software/documentation contains proprietary information of Embarcadero Technologies, Inc.; it is provided under a license agreement containing restrictions on use and disclosure and is also protected by copyright law. Reverse engineering of the software is prohibited.

Embarcadero Technologies, Inc. is a leading provider of award-winning tools for application developers and database professionals so they can design systems right, build them faster and run them better, regardless of their platform or programming language. Ninety of the Fortune 100 and an active community of more than three million users worldwide rely on Embarcadero products to increase productivity, reduce costs, simplify change management and compliance and accelerate innovation. The company's flagship tools include: Embarcadero® Change Manager™, CodeGear™ RAD Studio, DBArtisan®, Delphi®, ER/Studio®, JBuilder® and Rapid SQL®. Founded in 1993, Embarcadero is headquartered in San Francisco, with offices located around the world. Embarcadero is online at [www.embarcadero.com](http://www.embarcadero.com).

# Contents

- New Features .....4
- Data Source/Connectivity Updates..... 4
- Tuning Updates ..... 4
- Profiling Updates ..... 7

# NEW FEATURES

New features for this release fall into the following categories:

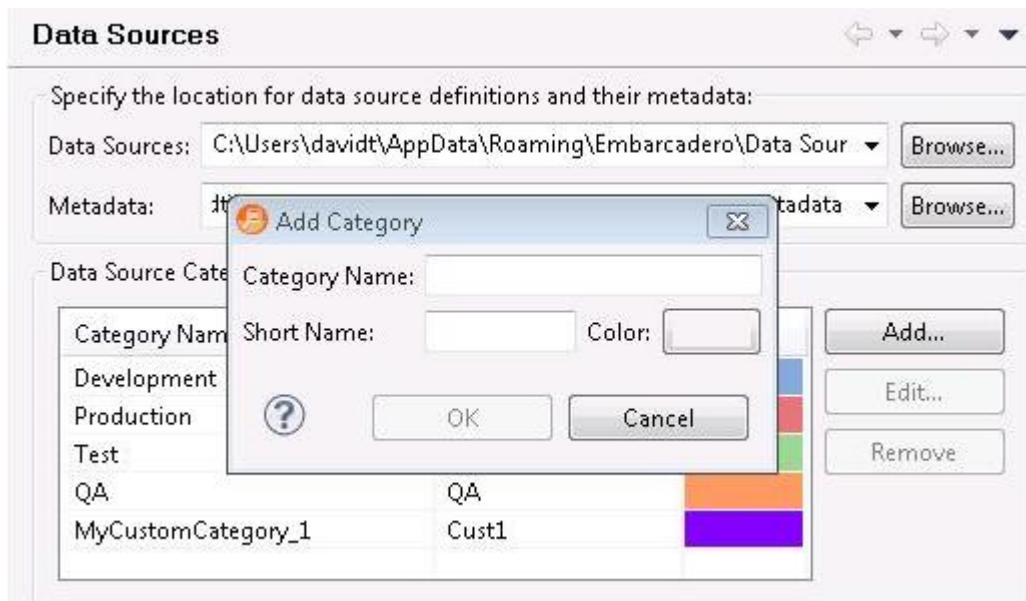
- [Data Source/Connectivity Updates](#)
- [Tuning Updates](#)
- [Profiling Updates](#)

## DATA SOURCE/CONNECTIVITY UPDATES

The following topics provide high-level descriptions of data source management and connectivity improvements for this release.

### Custom Data Source Categories

In previous releases, you could assign a category to a data source to make it visually distinctive in the Data Source Explorer and in other relevant areas of the user interface. Your choices were restricted to a set of default categories: Development, Production, Test, and QA. You can now create your own custom categories, providing a category name, short name, and identifying color for each.



## TUNING UPDATES

The following topics describe SQL Tuner updates for this release.

### New Sub-tabs Available from the SQL Server Analysis Tab

Previously only available for Oracle, **Table Statistics** and **Column Statistics and Histograms** tabs are now available when tuning against SQL Server data sources. The **Table Statistics** tab lets you view current table statistics settings as well as manually perform tasks such as updating statistics.

Index Analysis | **Table Statistics** | Column Statistics And Histograms | Plan Guides

View table statistics

Statistics			
Automatic Create Statistics	Automatic Up...e Statistics	Number of Rows	Number of ...s Sampled
.ON	ON	296	296
.ON	ON	3	3
.ON	ON	16	16
ON	ON	290	290

The **Column Statistics and Histograms** tab lets you view column statistics and identify histogram candidates.

Index Analysis | Table Statistics | **Column Statistics And Histograms** | Plan Guides

View column statistics

Statistics						
Rows	Rows Sampled	Steps	Density	Average key length	String Index	Filter Exp
296	296	3	0.0	15.0	NO	
290	290	146	1.0	4.0	NO	
3	3	2	1.0	1.0	NO	
296	296	14	0.15384616	15.0	NO	

In addition, you can now view any plan guides existing on a server for statements being tuned. The new **Plan Guide** tab also lets you enable/disable, delete, and edit service plans.

Index Analysis | Table Statistics | Column Statistics And Histograms | **Plan Guides**

View Plan Guides

Enabled	Drop	Name	Statement	Type
<input checked="" type="checkbox"/>	<input type="checkbox"/>	TUNER_PLAN_GUIDE	SELECT ... edh.[ShiftID]	SQL

## DB2 9.7 Execution Statistics

When tuning against a DB2 9.7 datasource, the **Generated Cases** area of the **Overview** tab now includes an additional set of execution statistics gathered for the suggested cases.

Other Execution Statistics							
Physical Reads	Logical Reads	CPU Time (s)	Direct Reads	Sorts	Sort Time	Sorts ...flows	
67	5	0.07	0	20	0	0	
24	0	0.00	0	3	0	1	
62	0	0.07	0	4	15625	0	
62	0	0.07	0	4	15625	0	
62	0	0.07	0	2	0	0	

## Oracle Database Links Support

In previous releases, attempting to tune a statement containing a Dblink reference generated an error. While a warning is still generated, you can now execute and generate cases for transformations, SQL rewrites, and hints that do not rely on column, index, or primary key information.

## Oracle OPTIMIZER\_FEATURES\_ENABLE Hint

This hint lets you enable Optimizer features for a specified Oracle release.

## Oracle 11g R1 and R2 Hints

The following table lists Oracle 11g r1 AND r2 hints, newly available for this release:

Hint	Description
<b>BIND_AWARE</b>	Makes the cursor aware of bind values.
<b>IGNORE_ROW_ON_DUPKEY_INDEX</b>	Attempts to insert duplicate key values are silently ignored, rather than causing an ORA-0001 error.
<b>INDEX_RS_ASC</b>	Instructs the optimizer to perform an ascending index range scan for the specified table.
<b>INDEX_RS_DESC</b>	Instructs the optimizer to perform a descending index range scan for the specified table.
<b>NO_BIND_AWARE</b>	Disables bind peeking for the current query.
<b>NO_RESULT_CACHE</b>	Disables caching of results for the current query.
<b>NO_STATEMENT_QUEUEING</b>	Lets a statement bypass the parallel statement queue regardless of the PARALLEL_DEGREE_POLICY setting.
<b>NO_USE_INVISIBLE_INDEXES</b>	Makes invisible indexes unusable by the current query.
<b>STATEMENT_QUEUEING</b>	Lets a statement bypass the parallel statement queue regardless of the PARALLEL_DEGREE_POLICY setting.

Hint	Description
<b>RESULT_CACHE</b>	Caches the result set of the current query, ensuring that another session issuing the same query will be returned results from the cache.
<b>USE_INVISIBLE_INDEXES</b>	Makes invisible indexes unusable by the current query.

### Oracle 10g R2 Hints

The following table lists the Oracle 10g r2 hints, newly available for this release:

Hint	Description
<b>NATIVE_FULL_OUTER_JOIN</b>	A directive that instructs the optimizer to use native full outer join.
<b>NO_NATIVE_FULL_OUTER_JOIN</b>	A directive that instructs the optimizer to exclude the native execution method when joining specified tables.
<b>NO_USE_HASH_AGGREGATION</b>	A directive that disables hash aggregation.
<b>NO_XML_DML_REWRITE</b>	A directive that explicitly disables XML DML operator rewrite.
<b>PRECOMPUTE_SUBQUERY</b>	A directive that instructs the optimizer to execute the subquery before executing the outer query.
<b>USE_HASH_AGGREGATION</b>	A directive that enables hash aggregation.

### SQL Server MERGE statement support and Related Hints

You can now tune MERGE statements against SQL Server 2008 and higher data sources. In addition, the following related hints are available:

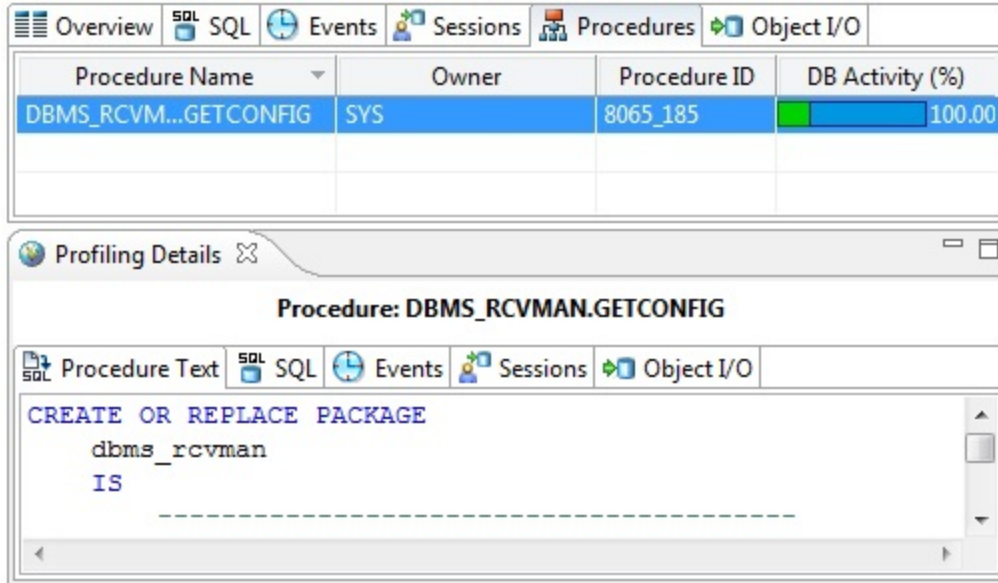
Hint	Description
FORCESCAN	Forces the optimizer to use an index scan operation as the access path to the referenced table or view.
FORCESEEK	Forces the optimizer to use an index seek operation as the access path to the referenced table or view.

## PROFILING UPDATES

The following topics describe SQL Profiler updates for this release.

### Oracle Procedures Load details

When profiling against an Oracle (10g or higher) data source, the **Top Activity** area and the **Profiling Details** pane now have dedicated **Procedures** tabs that provide information about the procedures load on the data source.



### Oracle Blocking Sessions Details

When profiling against an Oracledata source, the **Top Activity** area and the **Profiling Details** pane now have dedicated **Blockers** and **Blocked Sessions** tabs that provide information about sessions holding blocking locks.

