



Product Documentation

Embarcadero® DBArtisan™

New Features Guide

Version 9.6.1/XE5

Published May, 2014

© 2014 Embarcadero Technologies, Inc. Embarcadero, the Embarcadero Technologies logos, and all other Embarcadero Technologies product or service names are trademarks or registered trademarks of Embarcadero Technologies, Inc. All other trademarks are property of their respective owners.

This software/documentation contains proprietary information of Embarcadero Technologies, Inc.; it is provided under a license agreement containing restrictions on use and disclosure and is also protected by copyright law. Reverse engineering of the software is prohibited.

Embarcadero Technologies, Inc. is a leading provider of award-winning tools for application developers and database professionals so they can design systems right, build them faster and run them better, regardless of their platform or programming language. Ninety of the Fortune 100 and an active community of more than three million users worldwide rely on Embarcadero products to increase productivity, reduce costs, simplify change management and compliance, and accelerate innovation. Founded in 1993, Embarcadero is headquartered in San Francisco, with offices located around the world. To learn more, please visit <http://www.embarcadero.com>.

May 9, 2014

Contents

New Features	4
New in DBArtisan 9.6.1	4
New in DBArtisan 9.6	4
64-bit Installation	5
Windows 8 Support	5
Teradata	5
Other New DBMS Version Support	6
SQL Server Updates	7
DB2 LUW Updates	8
Sybase ASE Updates	8
Oracle Updates	9
Database Monitor	9
Query Builder	10

NEW FEATURES

This patch introduces new functionality. The following topics provide details on the new features for this patch and for the associated major release:

- [New in DBArtisan 9.6.1](#)
- [New in DBArtisan 9.6](#).

NEW IN DBARTISAN 9.6.1

DB Team Server

Functionality previously provided by Embarcadero Connect, is now provided by DB Team Server. Like Connect, Team Server is a data governance repository that stores an inventory of datasource definitions and ER/Studio data models.

In addition to functionality provided by Connect, the new product also offers the following features:

- An advanced search mechanism lets you locate datasource definitions by a variety of criteria, including DBMS platform, version, and host name. You can also search on operational characteristics such as space statistics and ping time.
- Users can monitor the activity stream associated with their DB Team Server account or the activity stream for a datasource definition. Streams include user posts, *Likes*, and *Follows*.

NEW IN DBARTISAN 9.6

New features for the release fall into the following categories:

- [64-bit Installation](#)
- [Windows 8 Support](#)
- [Teradata](#)
- [Other New DBMS Version Support](#)
- [SQL Server Updates](#)
- [DB2 LUW Updates](#)
- [Sybase ASE Updates](#)
- [Oracle Updates](#)
- [Database Monitor](#)
- [Query Builder](#).

64-BIT INSTALLATION

DBArtisan now runs as a native, 64-bit application. Separate installers let you choose between 32-bit and 64-bit applications.

64-bit versions of DBMS platform drivers are installed when you select that option. If you are using custom drivers, as of the 9.6 release, you must be using 64-bit versions of those custom drivers when using the 64-bit version of DBArtisan.

WINDOWS 8 SUPPORT

DBArtisan is now fully supported on the Windows 8 operating system.

TERADATA

As of this release, DBArtisan provides support for Teradata versions 13.10, 14, and 14.10. The following topics provide a summary of the new functionality.

Command line startup against Teradata datasources

As with other platforms, command line startup of DBArtisan is available with the following syntax options:

```
dbart.exe -D datasource -U username [-P password]
```

```
dbart.exe -R 'connectionstring' -D datasource -U username [-P password]
```

The *connectionstring* can take the following form:

```
teradata://HOST
```

```
teradata://HOST/DB
```

```
teradata://HOST:PORT
```

```
teradata://HOST:PORT/DB
```

NOTE: Using **teradatap** will make the datasource created permanent.

If the Teradata ODBC driver is installed, the connection will be established using that driver. Otherwise, the Teradata JDBC driver will be used.

Standard Datasource Registration and Connectivity

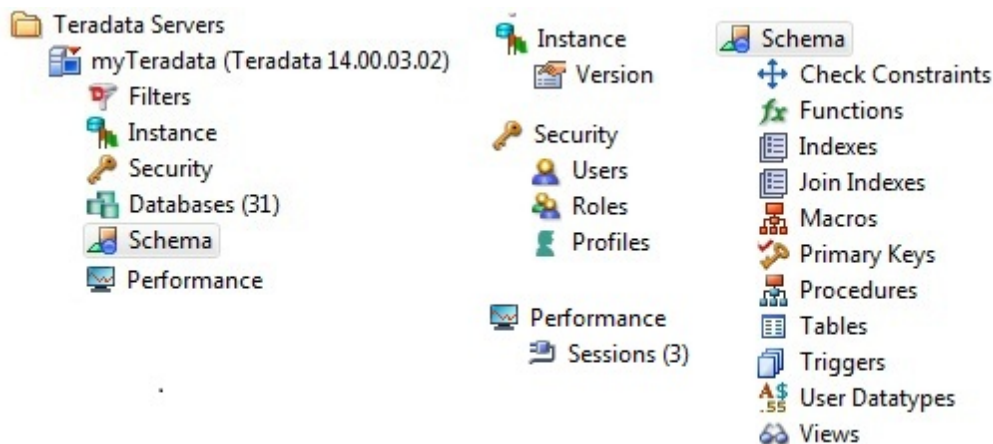
Currently, you can manually register a Teradata datasource, identifying a host and optionally providing port and database name information.

Database Type	Host:	<input type="text"/>
Connection Information	Port (optional):	<input type="text"/>
Security Parameters	Database (optional):	<input type="text"/>
Custom Driver Properties	Datasource Name:	<input type="text"/>
Datasource Properties		
Datasource Group		

Similarly, a login dialog, prompting for a user name and password, lets you connect to a Teradata datasource.

Datasource Explorer/Navigator Node Availability

Primary Explorer/Navigator nodes and key secondary nodes for the new platform are as follows:



Object actions such as **Object Properties**, **Execute**, **Edit Data**, **Build Query**, **Select * From**, and **Schema** are available, as appropriate to the object type.

SQL Editor

Execution against Teradata sources is available. Also available are related, common SQL Editor tools such as **Query Options**, **Paste SQL Syntax**, and **Paste SQL Statement**.

OTHER NEW DBMS VERSION SUPPORT

As of this release, DBArtisan provides full support for the following DBMS platform versions:

- IBM DB2 LUW version 10
- IBM DB2 z/OS version 10
- Oracle 12c

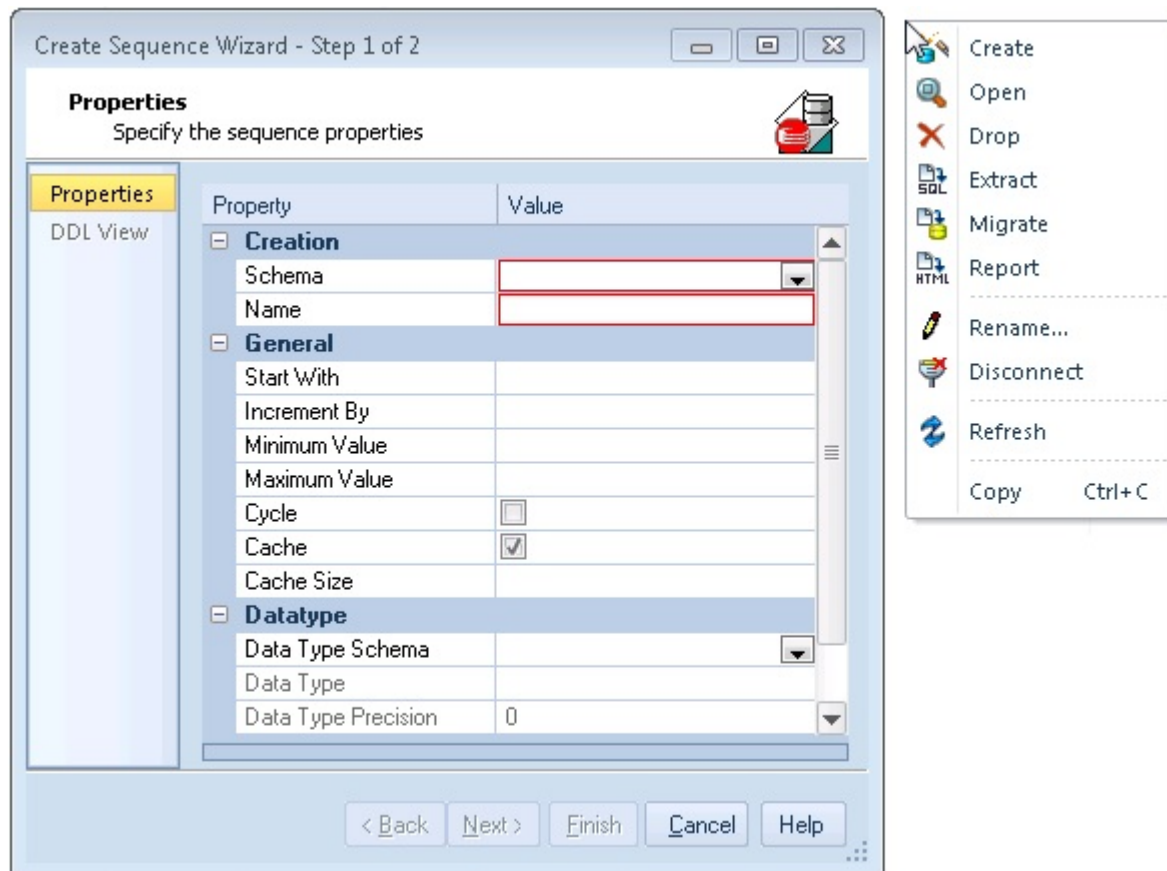
- Sybase ASE 15.7.

SQL SERVER UPDATES

The following topics describe SQL Server updates for the current release.

Sequence Object Type

DBArtisan now supports the sequence object type, introduced with SQL Server version 12. A creation wizard, editor, and a basic set of object actions are provided.



FileTable and FileStream updates to tables

When creating or editing SQL Server tables, a new set of properties is available. They let you:

- Specify a filegroup for the table by providing a FILESTREAM_ON argument value
- Create the table as a FileTable, with a full set of FileTable arguments.

Filestream On	zmbftfg
Filetable	
As Filetable	<input checked="" type="checkbox"/>
Filetable Collate Filename	
Filetable Directory Name	
Filetable PK Constraint Name	
Filetable StreamID Unique Constraint Name	
Filetable Fullpath Unique Constraint Name	

A new **Enable/Disable Filetable(s)** action lets you build and submit an ALTER TABLE statement, specifying either an ENABLE FILETABLE_NAMESPACE or DISABLE FILETABLE_NAMESPACE argument. This enables or disables system-defined constraints on a FileTable.

The screenshot shows a dialog box titled "Enable/Disable Filetable(s)". On the left, there is a "Preview" section. The main area displays "1 filetable(s) to be enabled/disabled." with a list containing "dbo.kjgh". To the right, there are "Action Options" with a table:

Enable	<input checked="" type="checkbox"/>

Below this table, there is a section titled "Enable" with the text "Check to enable the selected filetable(s)." At the bottom of the dialog, there are several buttons: "Preview", "Schedule", "< Back", "Next >", "Execute", "Cancel", and "Help".

DB2 LUW UPDATES

The **Update Statistics** object action has been updated to use the ADMIN_CMD system procedure. This eliminates the constraint of having target datasources registered by alias and using the native client. **Update Statistics** can now be used against all datasources, regardless of how they were registered.

SYBASE ASE UPDATES

Against version 15.7 datasources, the Login Wizard/Editor now generates DDL that uses CREATE/ALTER LOGIN syntax. New properties let you work with SUID, LOGIN PROFILE, and EXEMPT INACTIVE LOCK parameters.

Creation	
Name	biff
Full Name	
Suid	44
General	
Default Database	tempd
Default Language	
Profile	ignore
Account Locked	<input checked="" type="checkbox"/>
Authentication	
Password	*****
Password Expiration (0 - 32767)	
Minimum Password Length (0 - 30)	
Maximum Login Attempts (0 - 32767)	
Authentication Mechanism	
Exempt Inactive Lock	<input checked="" type="checkbox"/>

```

USE master
go
CREATE LOGIN biff WITH PASSWORD dfsdfs
LOGIN PROFILE ignore
SUID 44
DEFAULT DATABASE tempdb
EXEMPT INACTIVE LOCK true
go
EXEC sp_locklogin biff, 'lock'
go

```

The **Change Login Password**, **Add/Modify Login Trigger**, and **Drop Login Trigger** actions have also been updated to generate DDL that uses ALTER LOGIN syntax.

ORACLE UPDATES

If the Oracle SQL*Net Client is not installed, DBArtisan will attempt to connect to an Oracle datasource using the Oracle Database Instant Client.

DATABASE MONITOR

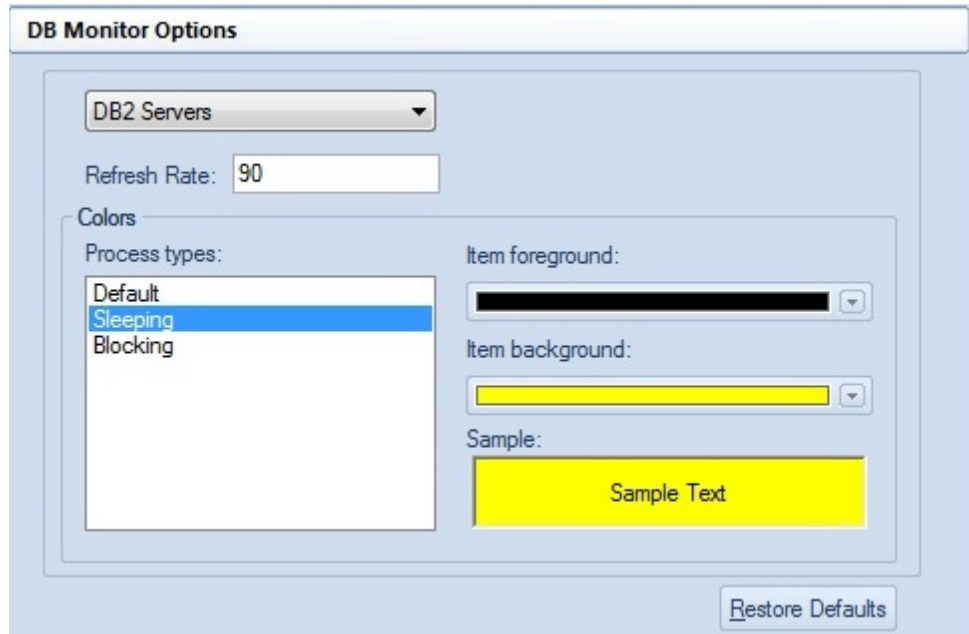
The following customizations can be made on a DBMS platform-by-platform basis.

Saved column-widths

When you manually resize a column on a Database Monitor tab, the new size is saved across startups of DBArtisan and Database Monitor.

Color-coding and Refresh Rate Customization

The Options Editor now offers a **DB Monitor** page.



It lets you perform the following tasks:

- Set foreground and background colors associated with sleeping, blocking, and default processes
- Specify the default display refresh rate used after opening a Database Monitor window. Note that you can still modify the refresh rate from the Database Monitor window.

QUERY BUILDER

As of this release, when you add the same table to the diagram pane multiple times, a new alias is automatically assigned to each instance. Adding a table multiple times can be useful when selecting additional data from the table, based on different join criteria.