

3746 Nways Multiprotocol Controller  
Models 900 and 950



# Parts Catalog





3746 Nways Multiprotocol Controller  
Models 900 and 950



# Parts Catalog

**Note!**

Before using this information and the product it supports, be sure to read the general information under "Notices" on page v.

### **Third Edition (July 1999)**

This edition applies to the 3746 Nways Multiprotocol Controller Models 900 and 950.

Order publications through your IBM representative or the IBM branch office serving your locality. Publications are not stocked at the address given below.

A form for readers' comments appears at the back of this publication. If the form has been removed, address your comments to:

Department CGFA  
Design & Information Development  
IBM Corporation  
PO Box 12195  
Research Triangle Park NC 27709  
U.S.A.

When you send information to IBM, you grant IBM a nonexclusive right to use or distribute the information in any way it believes appropriate without incurring any obligation to you.

© **Copyright International Business Machines Corporation 1997 1999. All rights reserved.**

US Government Users Restricted Rights – Use, duplication or disclosure restricted by GSA ADP Schedule Contract with IBM Corp.

---

# Contents

<b>Notices</b>	v
Electronic Emission Notices	vi
Industry Canada Class A Emission Compliance Statement	vi
Avis de conformité aux normes d'Industrie Canada	vi
European Union (EU) Mark of Conformity Statement	vi
Japanese Voluntary Control Council for Interference (VCCI) Statement	vii
Korean Communications Statement	vii
Taiwanese Class A Warning Statement	viii
New Zealand Radiocommunications (Radio) Regulations	viii
Notice to UK Users	viii
Year 2000 Statement	viii
Safety	ix
How to Use This Parts Catalog	x
Part Listing Glossary	xi
Visual Index 1, Front View	xii
Visual Index 2, Rear View	xiii
 <b>Catalog Section</b>	 1
Assembly 1: Frame and Cover Assembly (Part 1 of 2)	2
Assembly 2: Frame and Cover Assembly (Part 2 of 2)	4
Assembly 3: Final Assembly (Part 1 of 8)	6
Assembly 4: Final Assembly Model 900 (Part 2 of 8)	8
Assembly 5: Final Assembly Model 950 (Part 3 of 8)	10
Assembly 6: Final Assembly (Part 4 of 8)	12
Assembly 7: Final Assembly (Part 5 of 8)	14
Assembly 8: Final Assembly (Part 6 of 8)	16
Assembly 9: Final Assembly (Part 7 of 8)	18
Assembly 10: Final Assembly (Part 8 of 8)	20
Assembly 11: AC Power Attachment Cord (Part 1 of 2)	22
Assembly 12: Power Attachment Cord (Part 2 of 2)	24
 <b>Part Number Index</b>	 27



---

## Notices

References in this publication to IBM products, programs, or services do not imply that IBM intends to make these available in all countries in which IBM operates. Any reference to an IBM product, program, or service is not intended to state or imply that only IBM's product, program, or service may be used. Any functionally equivalent product, program, or service that does not infringe any of IBM's intellectual property rights may be used instead of the IBM product, program, or service. Evaluation and verification of operation in conjunction with other products, except those expressly designated by IBM, are the user's responsibility.

IBM may have patents or pending patent applications covering subject matter in this document. The furnishing of this document does not give you any license to these patents. You can send license inquiries, in writing, to:

IBM Director of Licensing  
IBM Corporation  
North Castle Drive  
Armonk, NY 10504-1785  
U.S.A.

For license inquiries regarding double-byte (DBCS) information, contact the IBM Intellectual Property Department in your country or send inquiries, in writing, to:

IBM World Trade Asia Corporation  
Licensing  
2-31 Roppongi 3-chome, Minato-ku  
Tokyo 106, Japan

The following paragraph does not apply to the United Kingdom or any other country where such provisions are inconsistent with local law:

INTERNATIONAL BUSINESS MACHINES CORPORATION PROVIDES THIS PUBLICATION "AS IS" WITHOUT WARRANTY OF ANY KIND, EITHER EXPRESS OR IMPLIED, INCLUDING, BUT NOT LIMITED TO, THE IMPLIED WARRANTIES OF NON-INFRINGEMENT, MERCHANTABILITY OR FITNESS FOR A PARTICULAR PURPOSE. Some states do not allow disclaimer of express or implied warranties in certain transactions, therefore, this statement may not apply to you.

This information could include technical inaccuracies or typographical errors. Changes are periodically made to the information herein; these changes will be incorporated in new editions of the publication. IBM may make improvements and/or changes in the product(s) and/or the program(s) described in this publication at any time without notice.

This information is for planning purposes only. The information herein is subject to change before the products described become available.

---

## Electronic Emission Notices

### Federal Communications Commission (FCC) Statement

**Note:** This equipment has been tested and found to comply with the limits for a Class A digital device, pursuant to Part 15 of the FCC Rules. These limits are designed to provide reasonable protection against harmful interference when the equipment is operated in a commercial environment. This equipment generates, uses, and can radiate radio frequency energy and, if not installed and used in accordance with the instruction manual, may cause harmful interference to radio communications. Operation of this equipment in a residential area is likely to cause harmful interference, in which case the user will be required to correct the interference at his own expense.

Properly shielded and grounded cables and connectors must be used in order to meet FCC emission limits. IBM is not responsible for any radio or television interference caused by using other than recommended cables and connectors or by unauthorized changes or modifications to this equipment. Unauthorized changes or modifications could void the user's authority to operate the equipment.

This device complies with Part 15 of the FCC Rules. Operation is subject to the following two conditions: (1) this device may not cause harmful interference, and (2) this device must accept any interference received, including interference that may cause undesired operation.

### Industry Canada Class A Emission Compliance Statement

This Class A digital apparatus complies with Canadian ICES-003.

### Avis de conformité aux normes d'Industrie Canada

Cet appareil numérique de la classe A est conforme à la norme NMB-003 du Canada.

### European Union (EU) Mark of Conformity Statement

This product is in conformity with the protection requirements of EU Council Directive 89/336/EEC on the approximation of the laws of the Member States relating to electromagnetic compatibility. IBM cannot accept responsibility for any failure to satisfy the protection requirements resulting from a non-recommended modification of the product, including the fitting of non-IBM option cards.

This product has been tested and found to comply with the limits for Class A Information Technology Equipment according to CISPR 22/European Standard EN 55022. The limits for Class A equipment were derived for commercial and industrial environments to provide reasonable protection against interference with licensed communication equipment.

**Attention:** This is a Class A product. In a domestic environment this product may cause radio interference in which case the user may be required to take adequate measures.

**Zulassungsbescheinigung laut dem Deutschen Gesetz über die elektromagnetische Verträglichkeit von Geräten (EMVG) vom 30. August 1995 (bzw. der EMC EG Richtlinie 89/336).**



Dieses Gerät ist berechtigt, in Übereinstimmung mit dem Deutschen EMVG das EG-Konformitätszeichen - CE - zu führen.

Verantwortlich für die Konformitätserklärung nach Paragraph 5 des EMVG ist die IBM Deutschland Informationssysteme GmbH, 70548 Stuttgart.

Informationen in Hinsicht EMVG Paragraph 3 Abs. (2) 2:

Das Gerät erfüllt die Schutzanforderungen nach EN 50082-1 und EN 55022 Klasse A.

EN 55022 Klasse A Geräte müssen mit folgendem Warnhinweis versehen werden:

“Warnung: Dies ist eine Einrichtung der Klasse A. Diese Einrichtung kann im Wohnbereich Funkstörungen verursachen; in diesem Fall kann vom Betreiber verlangt werden, angemessene Maßnahmen durchzuführen und dafür aufzukommen.”

EN 50082-1 Hinweis:

“Wird dieses Gerät in einer industriellen Umgebung betrieben (wie in EN 50082-2 festgelegt), dann kann es dabei eventuell gestört werden. In solch einem Fall ist der Abstand bzw. die Abschirmung zu der industriellen Störquelle zu vergrößern.”

Anmerkung:

Um die Einhaltung des EMVG sicherzustellen, sind die Geräte, wie in den IBM Handbüchern angegeben, zu installieren und zu betreiben.

## Japanese Voluntary Control Council for Interference (VCCI) Statement

This product is a Class A Information Technology Equipment and conforms to the standards set by the Voluntary Control Council for Interference by Technology Equipment (VCCI). In a domestic environment this product may cause radio interference in which case the user may be required to take adequate measures.

この装置は、情報処理装置等電波障害自主規制協議会（VCCI）の基準に基づくクラスA情報技術装置です。この装置を家庭環境で使用すると電波妨害を引き起こすことがあります。この場合には使用者が適切な対策を講ずるよう要求されることがあります。

## Korean Communications Statement

Please note that this device has been certified for business purpose with regard to electromagnetic interference. If you find this is not suitable for your use, you may exchange it for one of residential use.

**A급 기기(업무용)**

이 기기는 업무용으로 전자파적합등록을 받은 기기이오니 판매자 또는 이용자는 이점을 주의하시기 바라며, 만약 구입하였을 때에는 구입한 곳에서 가정용으로 교환하시기 바랍니다.

## Taiwanese Class A Warning Statement

警告使用者：  
這是甲類的資訊產品，在  
居住的環境中使用時，可  
能會造成射頻干擾，在這  
種情況下，使用者會被要  
求採取某些適當的對策。

## New Zealand Radiocommunications (Radio) Regulations

**Attention:** This is a Class A product. In a domestic environment this product may cause radio interference in which case the user may be required to take adequate measures.

---

## Notice to UK Users

The IBM 3746 Model 900 and IBM 3746 Model 950 are manufactured according to the International Safety Standard IEC950 and, as such, are approved in the UK under the General Approval number NS/G/1234/J/100003.

The Active Remote Couplers (ARCs) and the X.21 Interface, housed within the 3746 Model 900 and 3746 Model 950, are approved separately, each having their own independent approval number. These interface adapters, supplied by IBM, do not contain excessive voltages. An excessive voltage is one which exceeds 42.4 V peak ac or 60 V dc. They interface with the 3746 Model 900 or 3746 Model 950, using Safe Extra Low Voltages only.

In order to maintain the independent approval of the IBM adapters, it is essential that other optional cards, not supplied by IBM, do not use mains voltages or any other excessive voltages. Seek advice from a competent engineer before installing other adapters not supplied by IBM.

---

## Year 2000 Statement

This product is Year 2000 ready. When used in accordance with its associated documentation, it is capable of correctly processing, providing, and/or receiving date data within and between the 20th and 21st centuries, provided all other products (for example, software, hardware, and firmware) used with the product properly exchange accurate date data with it.

For more information, refer to:

<http://www.ibm.com/year2000>

The 3745 and 3746 controllers require a certain level of microcode to be Year 2000 ready. For more detailed information, access the URL listed above and click **Product Readiness**.

---

## Safety

This product meets IBM safety standards.

For more information, see the following manual: *IBM 3745 Communication Controller All Models, IBM 3746 Expansion Unit Model 900, IBM 3746 Nways Multiprotocol Controller Model 950 Safety Information*, GA33-0400.

# How to Use This Parts Catalog

## HOW TO FIND PART INFORMATION

WHEN ASSEMBLY  
LOCATION IS KNOWN



PERFORM STEPS

(A) (B) (D)

WHEN ASSEMBLY  
NAME IS KNOWN



PERFORM STEPS

(B) (C) (D)

WHEN PART NUMBER  
IS KNOWN



PERFORM STEPS

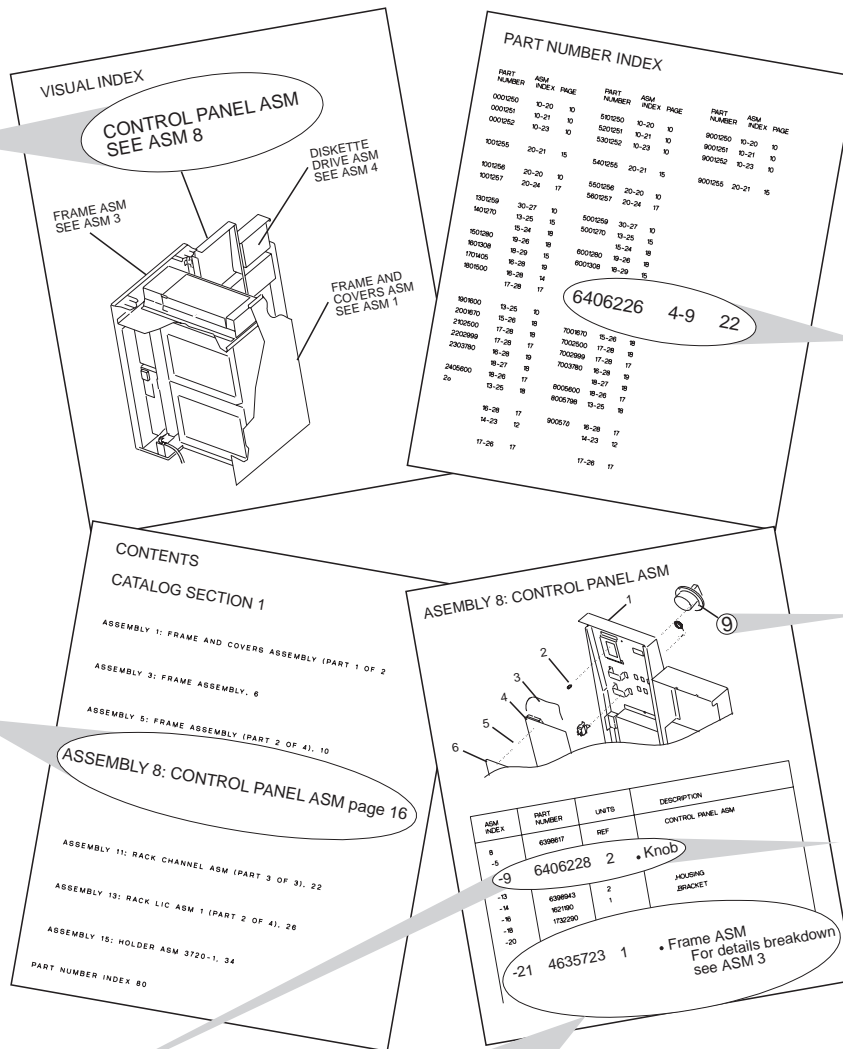
(E) (F) (G)

(A) Turn to the visual index then locate, by illustration, the assembly containing the part.

(B) Turn to the page for that assembly, then locate the part visually.

(C) Turn to the contents page, then locate, by name, the assembly containing the part.

(D) Using the part number index shown with the part, refer to the accompanying listing to obtain the part number, description, and quantity.



## Part Listing Glossary

① **NONE** When this notation appears in the Part Number column, it denotes a part or group of parts that have not been assigned a part number. The part number of cards and boards is not given because it is subject to frequent changes.

② **NR** this notation in the Units column denotes a part not recommended for field replacement.

③ **AR** this notation in the Units column indicates that the quantity is as required.

④ **SIMILAR ASSEMBLIES** If two or more assemblies contain a majority of identical parts, they are combined in the same listing. Parts common to assemblies are illustrated and listed by one index number.

Parts specific to one or the other of the assemblies are listed separately and identified either in the description of the part, or

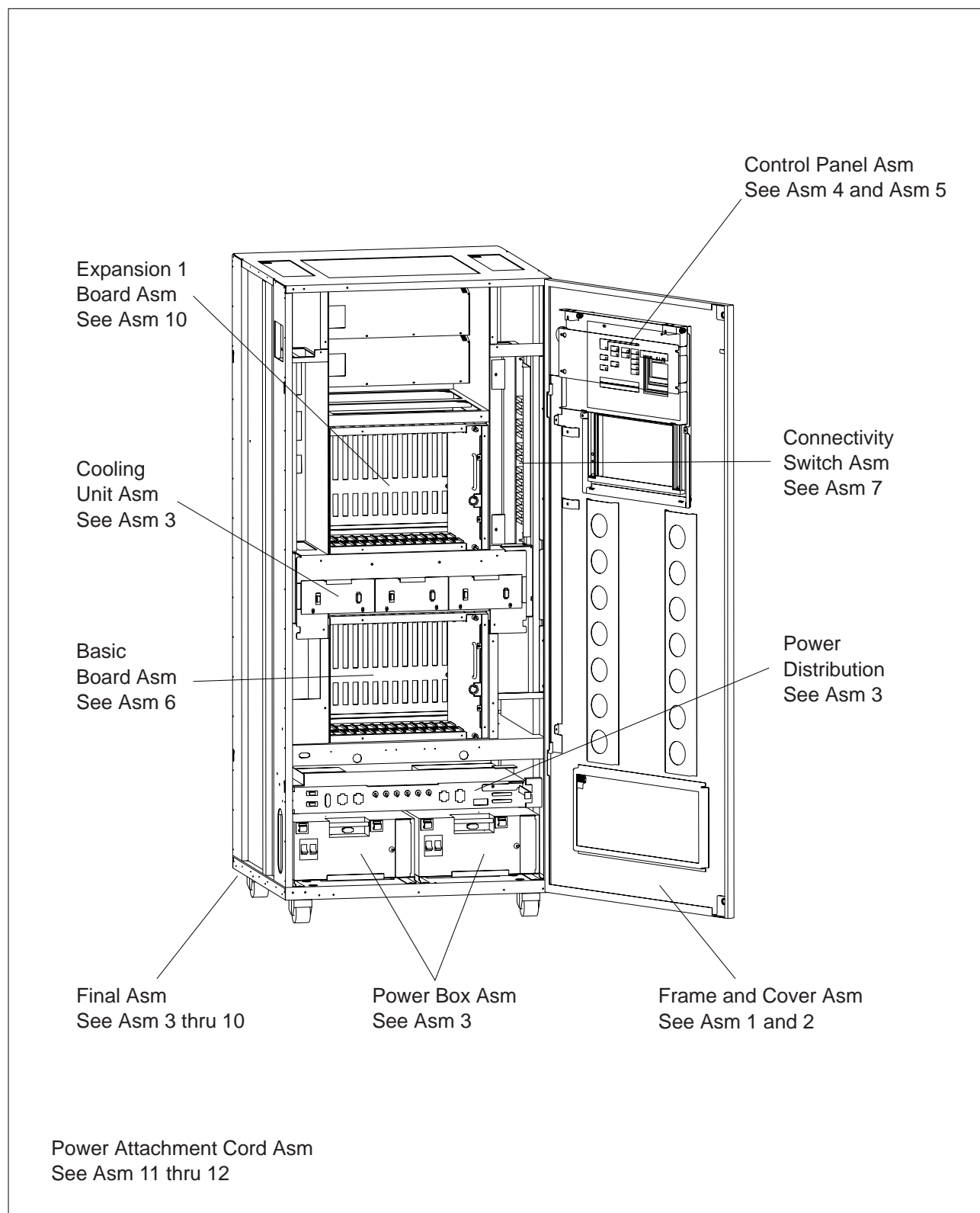
⑤ **REF** this notation in the Units column indicates that the listing of the assembly is repeated and reference should be made to its previous listing for the quantity required.

⑥ **INDENTATION** the indentation of items in the Description column of the table below shows the relationship between assemblies, subassemblies and detail parts. For example:

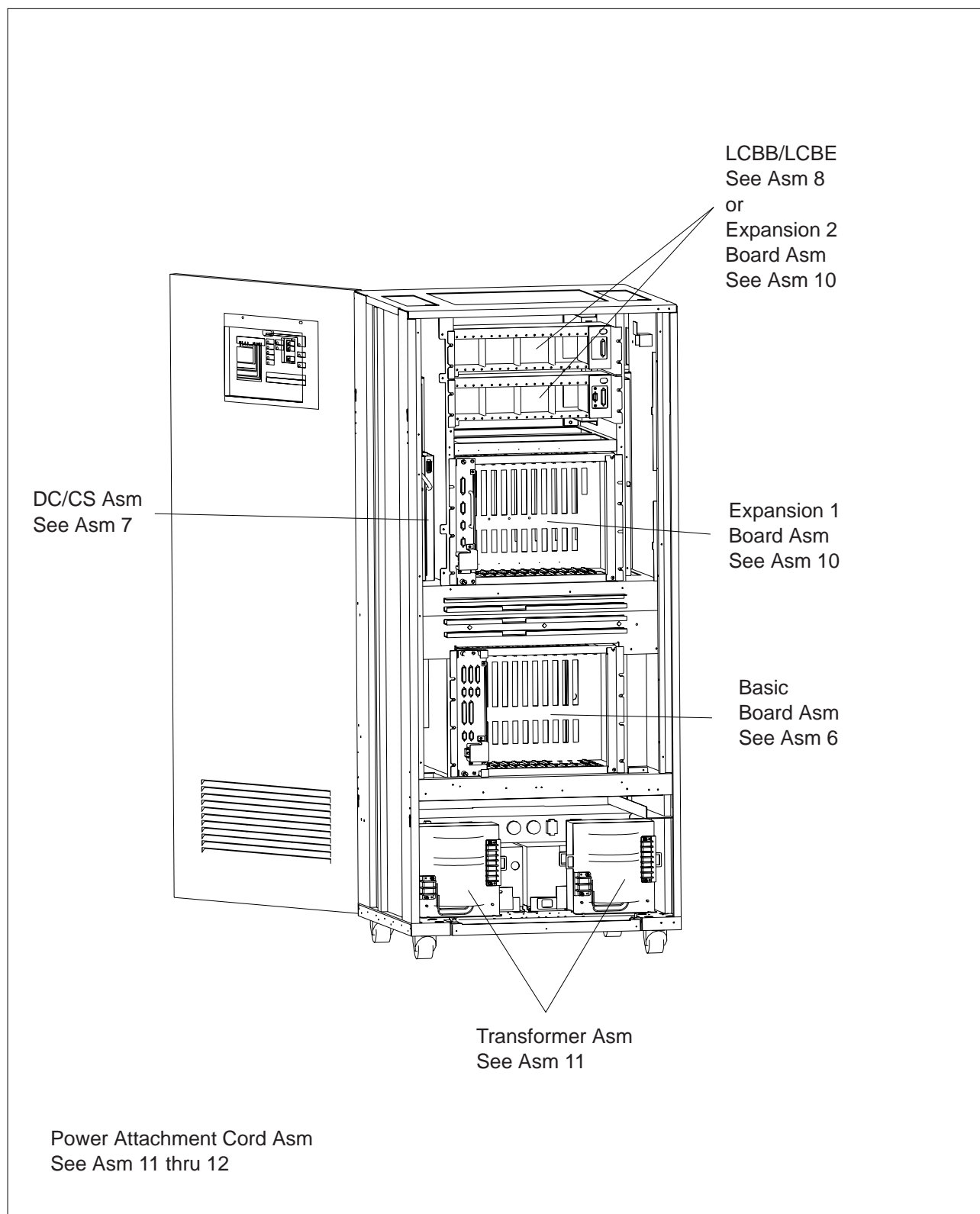
Not dot		MAIN ASSEMBLY
One dot	●	Detail parts of main ASM
One dot	●	Assembly within main ASM
Two dots	● ●	Detail part of 1 dot ASM
Two dots	● ●	Assembly within 1 dot ASM
Three dots	● ● ●	Detail parts of 2 dot ASM

Asm-Index	Part Number	Units	Description
8-	NONE	REF	Final Assembly
-1	1501460	1	● Disk Drive ASM
-2	6426882	1	● Bracket
-3	10170	4	● Screw, Slot Bind HD-6/32 X 0.250 LG
-4	NONE	1	● Power Attachment Cord
-5	6398770	8	● Modular Dummy
-6	6398942	1	● Overlay-English
-6	6427178	1	● Overlay-French
-6	6427181	1	● Overlay-Portuguese
-6	6428182	1	● Overlay-Spanish
-7	6398936	NR	● Cover
-8	1621197	AR	● Screw, Pan HD-M4 X 6 LG

## Visual Index 1, Front View



## Visual Index 2, Rear View



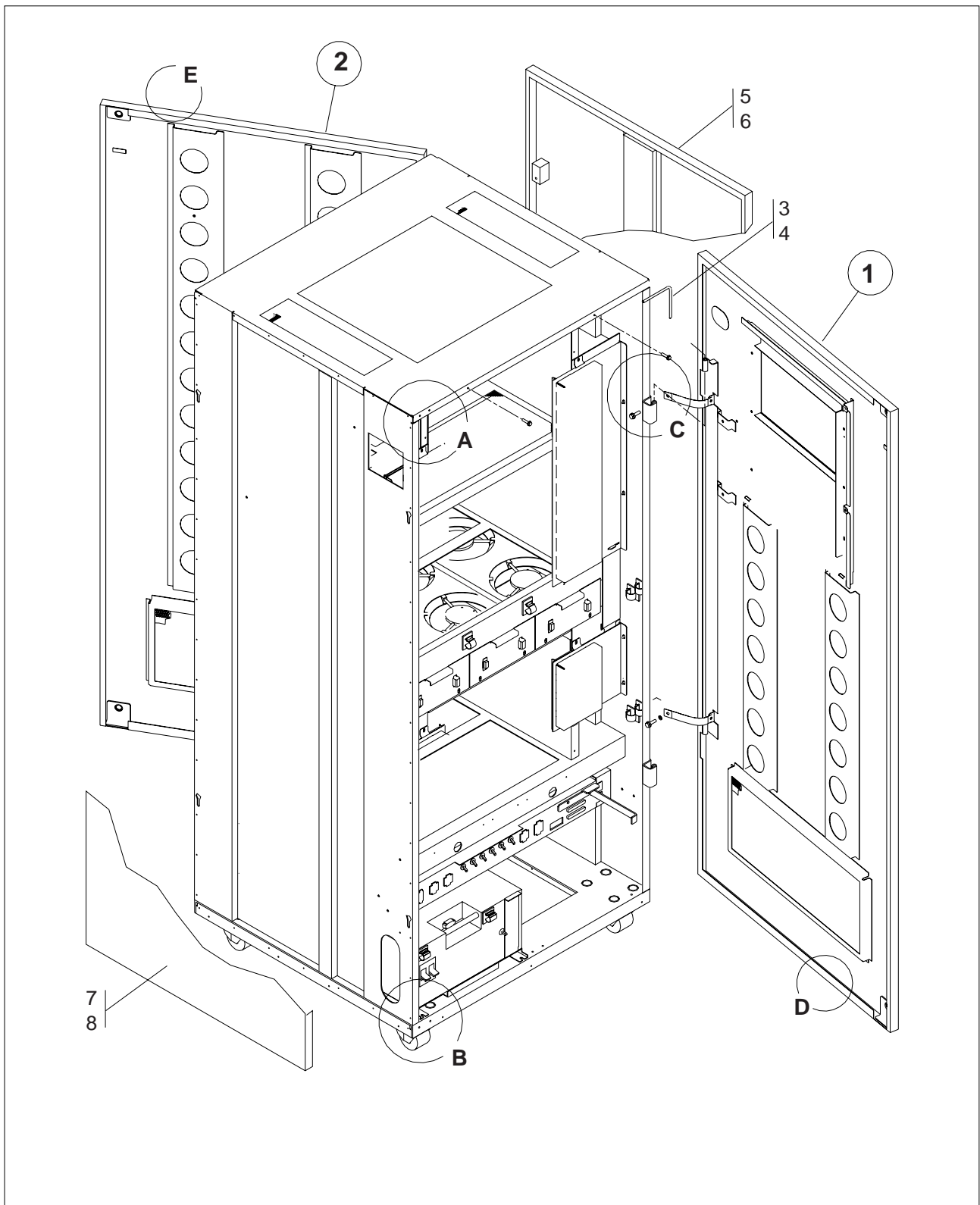




---

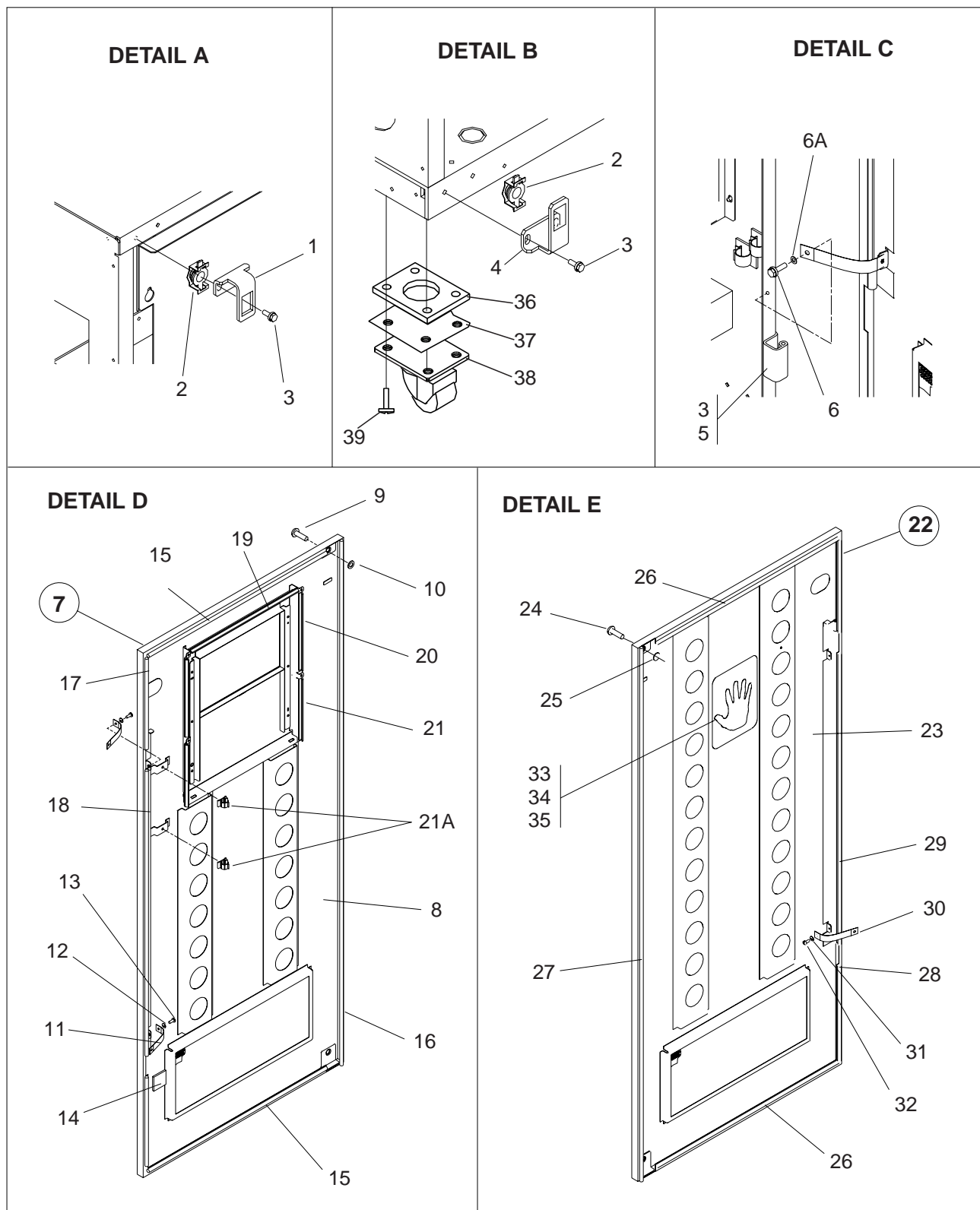
## Catalog Section

## Assembly 1: Frame and Cover Assembly (Part 1 of 2)



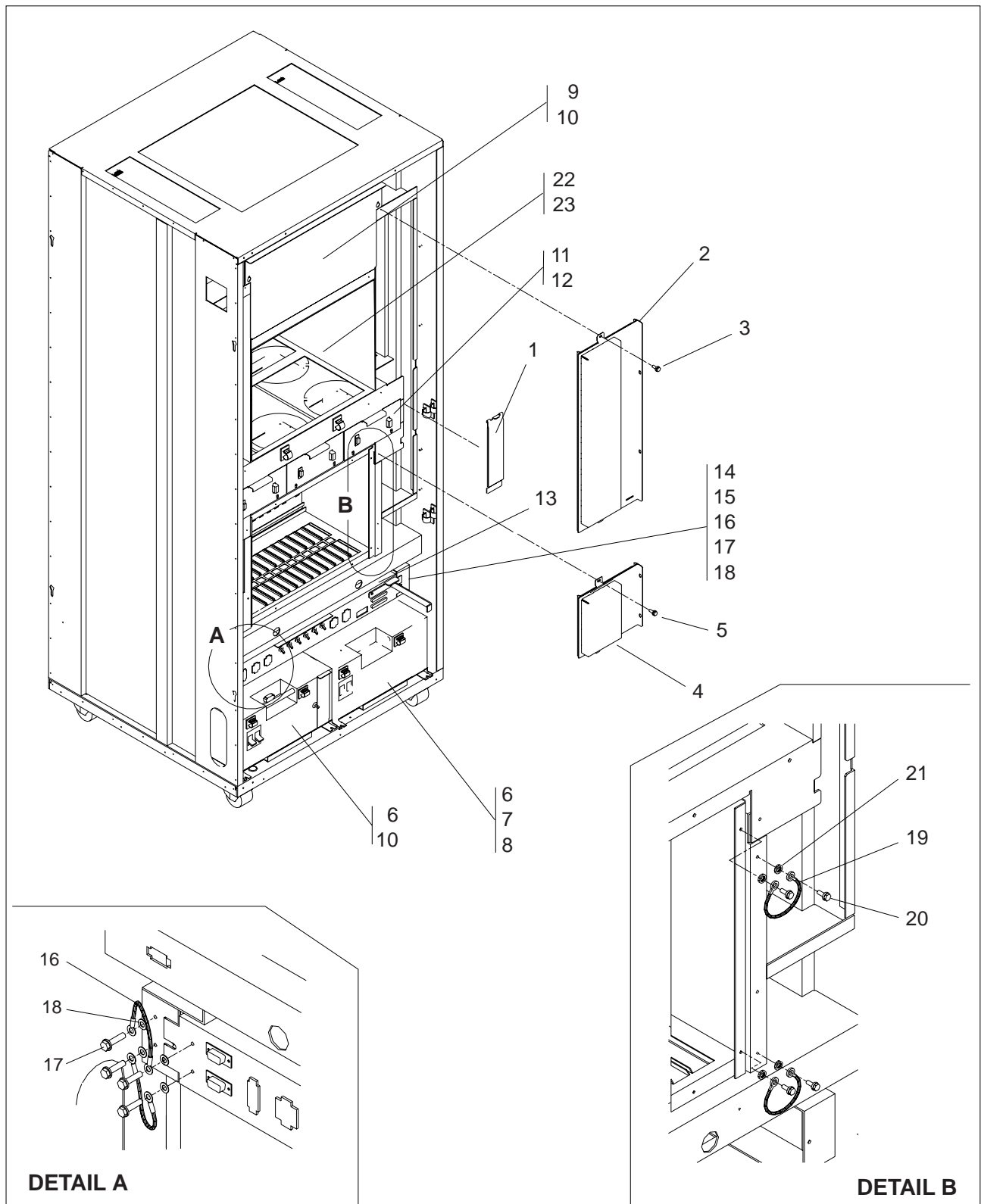
Asm- Index	Part Number	Units	Description
1-	NONE	REF	Frame and Cover Assembly (Part 1 of 2)
-1	34F1448	1	<ul style="list-style-type: none"> <li>• Front Cover ASM</li> </ul> For Detail Breakdown see ASM 2.
-2	34F1449	1	<ul style="list-style-type: none"> <li>• Rear Cover Assembly</li> </ul> For Detail Breakdown see ASM 2.
-3	09G3003	4	<ul style="list-style-type: none"> <li>• Shaft</li> </ul>
-4	09G3004	4	<ul style="list-style-type: none"> <li>• Clamp</li> </ul>
-5	6495760	1	<ul style="list-style-type: none"> <li>• End Cover</li> </ul>
-6	1621212	4	<ul style="list-style-type: none"> <li>• Screw, Pan HD- M5 X 16 LG</li> </ul>
-7	58G5314	1	<ul style="list-style-type: none"> <li>• End Cover</li> </ul>
-8	1621212	4	<ul style="list-style-type: none"> <li>• Screw, Pan HD- M5 X 16 LG</li> </ul>

## Assembly 2: Frame and Cover Assembly (Part 2 of 2)



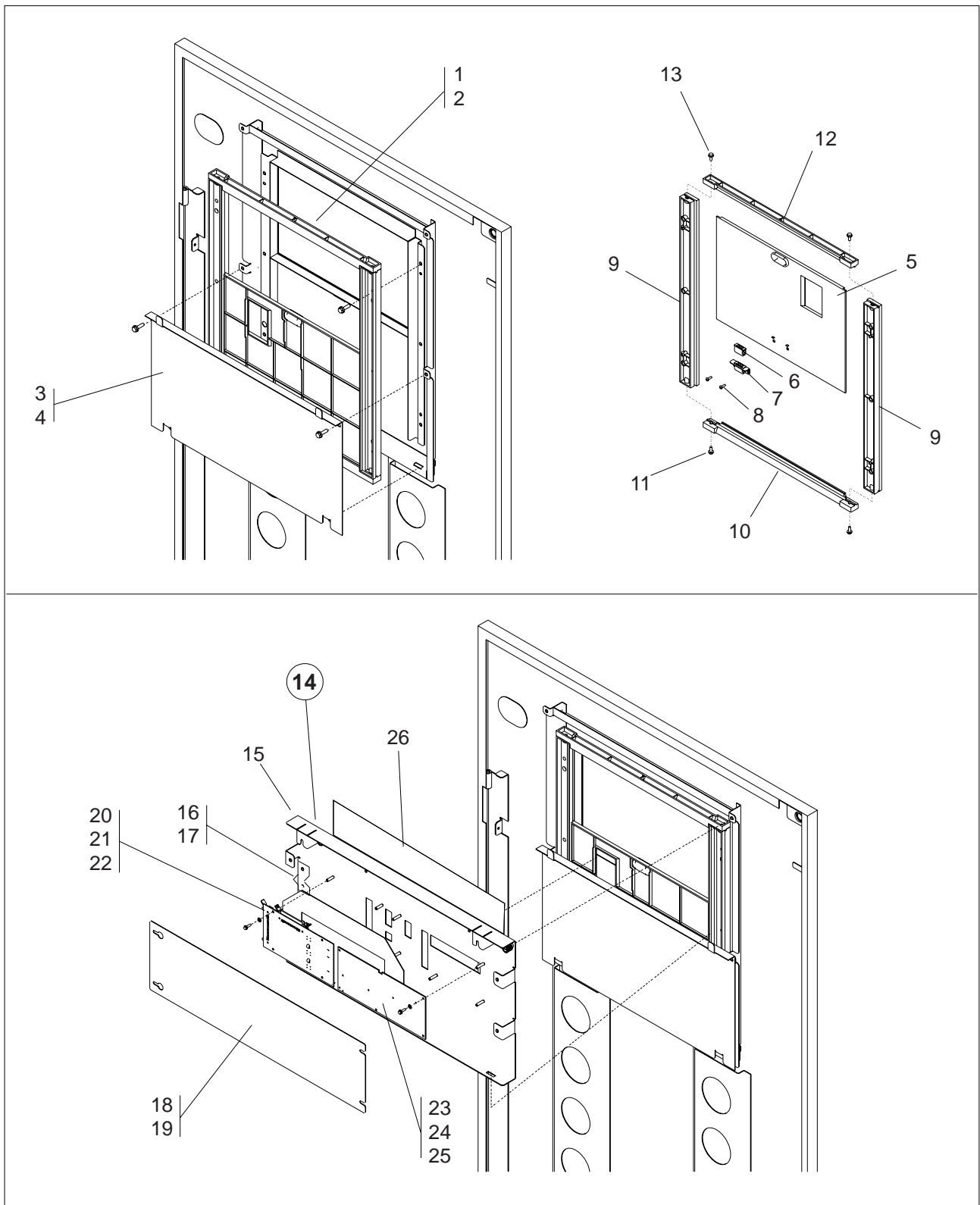
Asm- Index	Part Number	Units	Description
2-	NONE	REF	Frame and Cover Assembly (Part 2 of 2)
-1	6496007	2	• Bracket
-2	6406241	2	• Latch
-3	1621210	AR	• Screw,Pan HD- M5 X 10 LG
-4	63F2448	2	• Bracket
-5	6494763	4	• Bracket
-6	1621197	3	• Screw,Pan HD- M4 X 6 LG
-6A	17G5852	3	• Lockwasher,Ext,M4
-7	34F1448	REF	• Front Cover Assembly
-8	03F7483	1	• • Front Cover Frame
-9	58X9250	2	• • Stud
-10	1693573	2	• • Retainer
-11	5267931	2	• • Jumper Assembly
-12	17G5852	2	• • Lockwasher,Ext,M4
-13	1621191	2	• • Screw,Pan HD- M4 X 10 LG
-14	03F4471	1	• • Foam
-15	65X8879	2	• • Gasket
-16	6495997	1	• • Gasket
-17	6496002	2	• • Gasket
-18	6495999	1	• • Gasket
-19	03F4844	1	• • Gasket, 400 mm LG
-20	03F4844	2	• • Gasket, 250 mm LG
-21	03F4844	2	• • Gasket, 200 mm LG
-21A	09G3002	2	• • Clamp
-22	34F1449	REF	• Rear Cover Assembly
-23	03F7484	1	• • Rear Cover Frame
-24	6406240	2	• • Stud
-25	1693573	2	• • Ring
-26	65X8879	2	• • Gasket
-27	6495997	1	• • Gasket
-28	6496002	2	• • Gasket
-29	6495999	1	• • Gasket
-30	5267931	1	• • Jumper Assembly
-31	17G5852	1	• • Lockwasher,Ext,M4
-32	1621191	1	• • Screw,Pan HD- M4 X 10 LG
-33	03F7761	1	• • Panel ESD Discharge
-34	1621197	1	• • Screw Pan HD-M4 X 6 LG
-35	1622290	1	• • Large Flat Washer
-36	11F6274	4	• • Bumper Delivered by 4
-37	72F1154	4	• • Plate Delivered by 4
-38	72F1023	4	• • Caster Delivered by 4
-39	1621229	16	• • Screw

## Assembly 3: Final Assembly (Part 1 of 8)



Asm- Index	Part Number	Units	Description
3-	NONE	REF	Final Assembly (Part 1 of 8)
-1	63F2462	1	• Plate
-2	63F2480	1	• Cover
-3	1621191	2	• Screw,Pan HD- M4 X 10 LG
-4	11F6256	1	• Cover
-5	1621191	2	• Screw,Pan HD- M4 X 10 LG
-6	03F7610	1	• AC Primary Power Box Assembly, 50 Hz
-6	03F7609	1	• AC Primary Power Box Assembly, 60 Hz
-7	03F7620	1	• DC Box Assembly
-8	1621210	6	• Screw,Pan HD- M5 X 10 LG
-9	72F1198	1	• Cover
-10	1621191	2	• Screw,Pan HD- M4 X 10 LG
-11	03F7491	3	• Cooling Unit Assembly
-12	1621210	6	• Screw,Pan HD- M5 X 10 LG
-13	03F7664	1	• Filter
-14	03F7625	1	• Distribution Box Assembly
-15	1621210	2	• Screw,Pan HD- M5 X 10 LG
-16	72F1250	2	• Jumper
-17	1621191	4	• Screw,Pan HD- M4 X 10 LG
-18	17G5852	4	• Lockwasher,Ext,M4
-19	72F1250	2	• Jumper
-20	1621191	4	• Screw,Pan HD- M4 X 10 LG
-21	17G5852	4	• Lockwasher,Ext,M4
-22	72F1197	1	• Dummy Enclosure
			When Enclosure Expansion not present
-23	1621210	4	• Screw, Pan HD- M5 X 10 LG

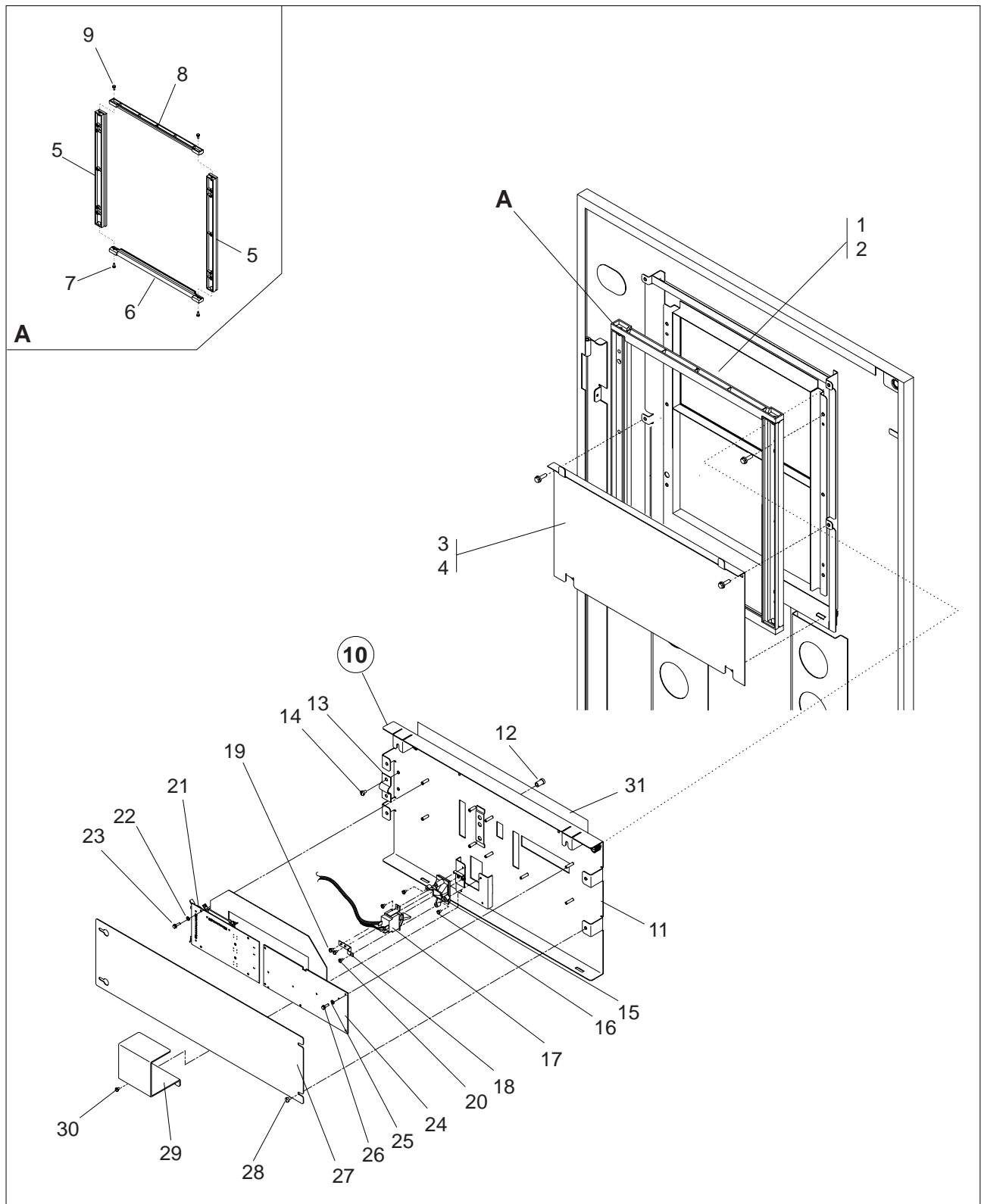
## Assembly 4: Final Assembly Model 900 (Part 2 of 8)





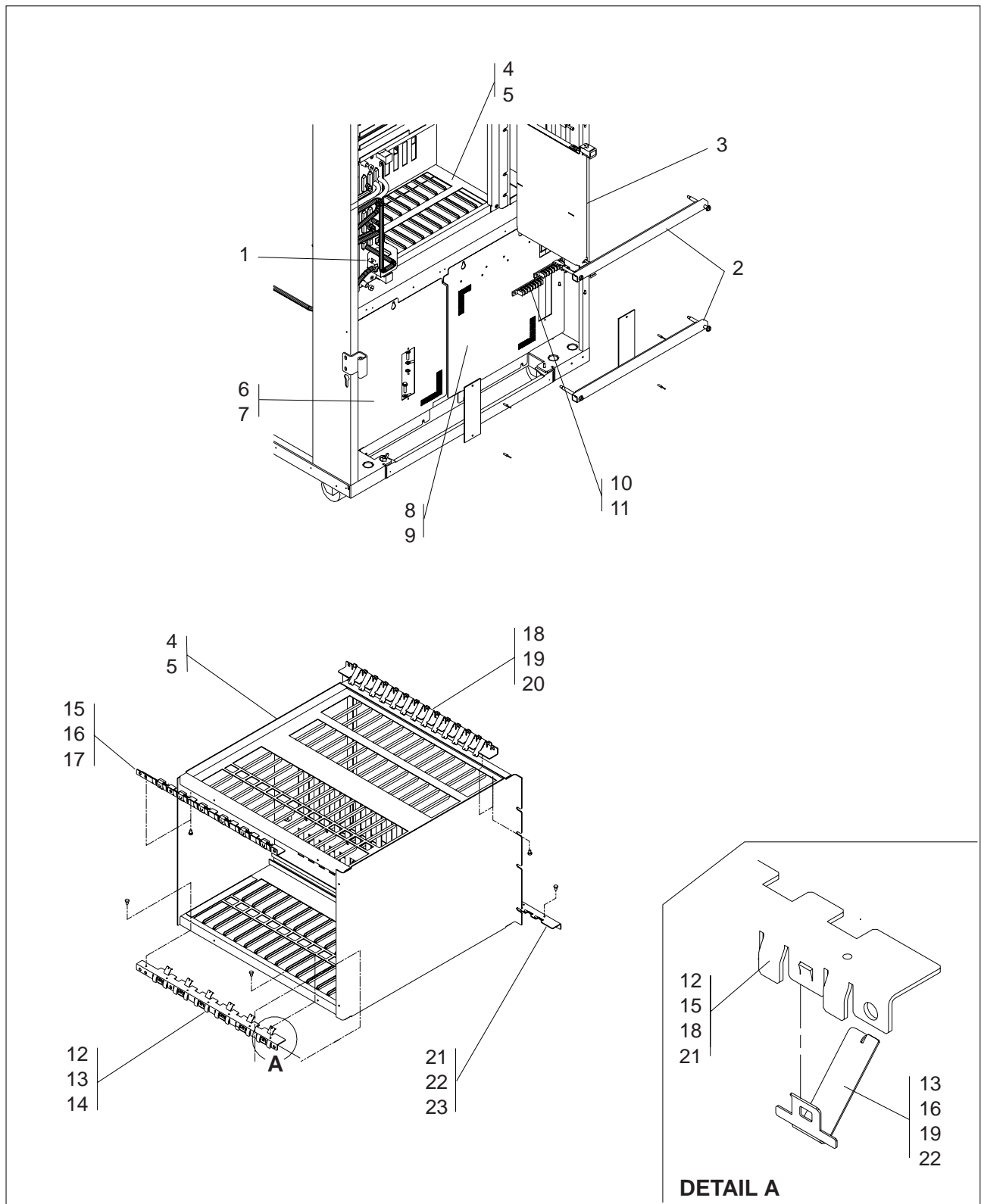
Asm- Index	Part Number	Units	Description
4-	NONE	REF	Final Assembly Model 900 (Part 2 of 8)
-1	72F1013	1	• Cover Assembly
-2	1621194	6	• Screw,Pan HD- M4 X 20 LG
-3	72F1003	1	• Cover
-4	1621197	2	• Screw,Pan HD- M4 X 6 LG
-5	72F1000	1	• Cover Slide
-6	72F1229	1	• Magnetic Catch
-7	72F1033	1	• Bracket
-8	1621170	2	• Screw, Pan HD-M3 X 6 LG
-9	72F1021	2	• Slide
-10	72F1022	1	• Spacer
-11	1621191	2	• Screw,Pan HD- M4 X 10 LG
-12	72F1022	1	• Spacer
-13	1621191	2	• Screw,Pan HD- M4 X 10 LG
-14	03F7492	1	• Gate Assembly
-15	72F1002	1	• • Gate Frame
-16	2980188	1	• • Clamp
-17	1621191	6	• • Screw,Pan HD- M4 X 10 LG
-18	11F6272	1	• • Cover
-19	1621191	4	• • Screw,Pan HD- M4 X 10 LG
-20	NONE	1	• Panel Key Board
-21	1622302	4	• Washer
-22	1621170	4	• Screw,Pan HD- M3 X 6 LG
-23	NONE	1	• Panel Key Board
-24	1622302	5	• Washer
-25	1621170	5	• Screw,Pan HD- M3 X 6 LG
-26	34F1434	1	• Overlay English
-26	34F1436	1	• Overlay French
-26	34F1438	1	• Overlay German
-26	34F1440	1	• Overlay Italian
-26	34F1442	1	• Overlay Spanish
-26	34F1444	1	• Overlay Japan

## Assembly 5: Final Assembly Model 950 (Part 3 of 8)



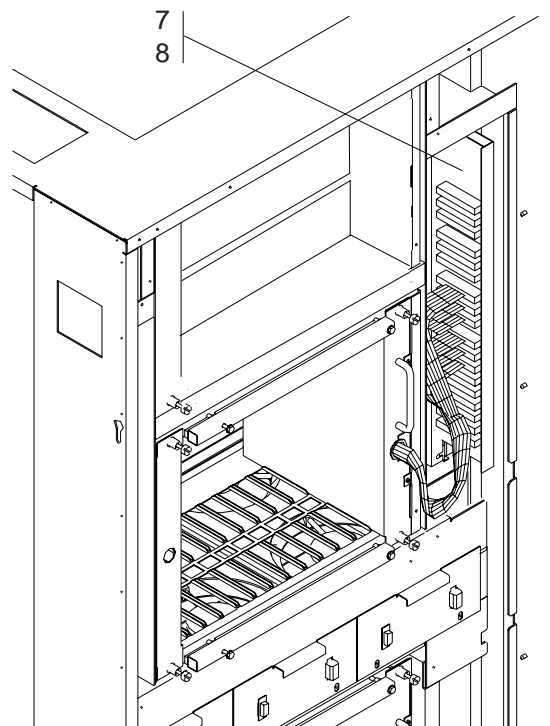
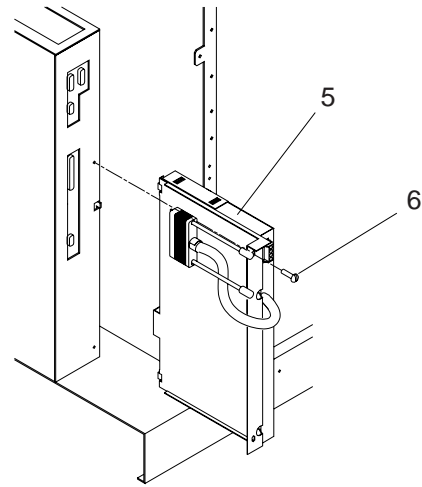
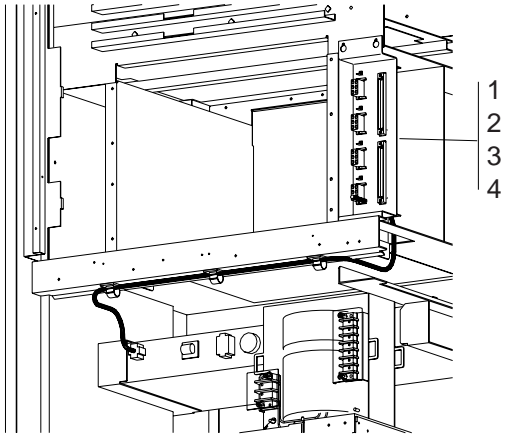
Asm- Index	Part Number	Units	Description
5-	NONE	REF	Final Assembly Model 950 (Part 3 of 8)
-1	72F1013	1	• Cover Assembly
-2	1621194	6	• Screw,Pan HD- M4 X 20 LG
-3	72F1003	1	• Cover
-4	1621197	2	• Screw,Pan HD- M4 X 6 LG
-5	72F1021	2	• Slide
-6	72F1022	1	• Spacer
-7	1621191	2	• Screw,Pan HD- M4 X 10 LG
-8	72F1022	1	• Spacer
-9	1621191	2	• Screw,Pan HD- M4 X 10 LG
-10	58G5514	1	• Gate Assembly
-11	58G5505	1	• • Gate Frame
-12	03F7551	1	• • Holder
-13	2980188	1	• • Clamp
-14	1621191	6	• • Screw,Pan HD- M4 X 10 LG
-15	4521357	1	• Housing
-16	1621172	2	• Screw, Pan HD-M3 X 10 LG
-17	58G5506	1	• Cable Assembly
-18	43G3154	1	• Bracket
-19	1621181	2	• Screw, Pan HD-M3.5 X 6 LG
-20	80651	2	• Screw
-21	NONE	1	• Panel Key Board
-22	1622302	4	• Washer
-23	1621170	4	• Screw,Pan HD- M3 X 6 LG
-24	NONE	1	• Panel Key Board
-25	1622302	5	• Washer
-26	1621170	5	• Screw,Pan HD- M3 X 6 LG
-27	11F6272	1	• Cover
-28	1621191	4	• Screw,Pan HD- M4 X 10 LG
-29	58G5507	1	• Cover
-30	1621172	2	• Screw,Pan HD- M3 X 10 LG
-31	58G5525	1	Overlay English
-31	58G5526	1	Overlay French
-31	58G5527	1	Overlay German
-31	58G5528	1	Overlay Italian
-31	58G5529	1	Overlay Spanish
-31	58G5530	1	Overlay Japan

## Assembly 6: Final Assembly (Part 4 of 8)



Asm- Index	Part Number	Units	Description
6-	NONE	REF	Final Assembly (Part 4 of 8)
-1	NONE	REF	• Card Assembly SPD1
-2	63F2559	4	• Bracket shipping
-3	03F7522	1	• Dummy LIC
-4	61F4611	1	• Basic Enclosure Assembly
-5	1621210	8	• Screw,Pan HD- M5 X 10 LG
-6	61F4571	1	• Cover
-7	1621210	2	• Screw,Pan HD- M5 X 10 LG
-8	03F7647	1	• Cover
-9	1621210	2	• Screw,Pan HD- M5 X 10 LG
-10	84X5763	4	• Guide
-11	1621191	8	• Screw,Pan HD- M4 X 10 LG
-12	61F4554	1	• Bracket
-13	61F4553	6	• Spring
-14	1621170	7	• Screw,Pan HD- M3 X 6 LG
-15	61F4555	1	• Bracket
-16	61F4553	6	• Spring
-17	1621170	7	• Screw,Pan HD- M3 X 6 LG
-18	61F4557	1	• Bracket
-19	61F4553	13	• Spring
-20	1621170	7	• Screw,Pan HD- M3 X 6 LG
-21	61F4556	1	• Bracket
-22	61F4553	13	• Spring
-23	1621170	7	• Screw,Pan HD- M3 X 6 LG

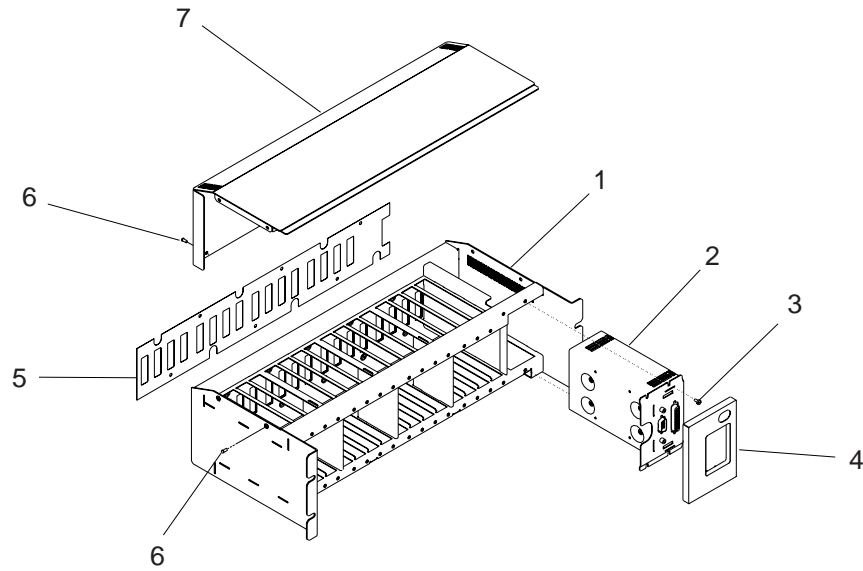
## Assembly 7: Final Assembly (Part 5 of 8)



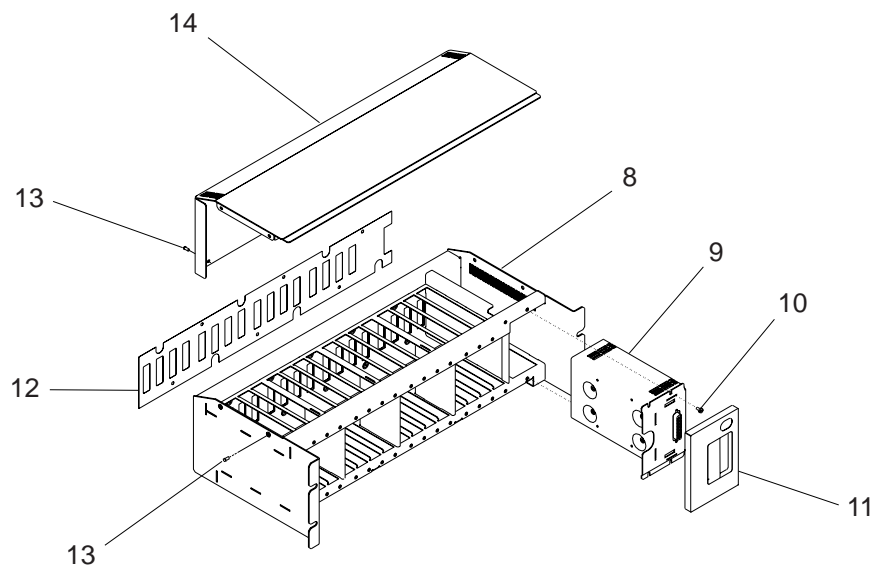
Asm- Index	Part Number	Units	Description
7-	NONE	REF	Final Assembly (Part 5 of 8)
-1	61F4561	1	• RPO Assembly
-2	5351156	1	• Relay
-3	5351163	1	• Clamp
-4	1621197	3	• Screw,Pan HD- M4 X 6 LG
-5	72F1165	1	• DC Switch
-6	1621197	2	• Screw,Pan HD- M4 X 6 LG
-7	NONE	1	• Connectivity Switch Assembly
-8	1621197	2	• Screw,Pan HD- M4 X 6 LG

## Assembly 8: Final Assembly (Part 6 of 8)

LCBB



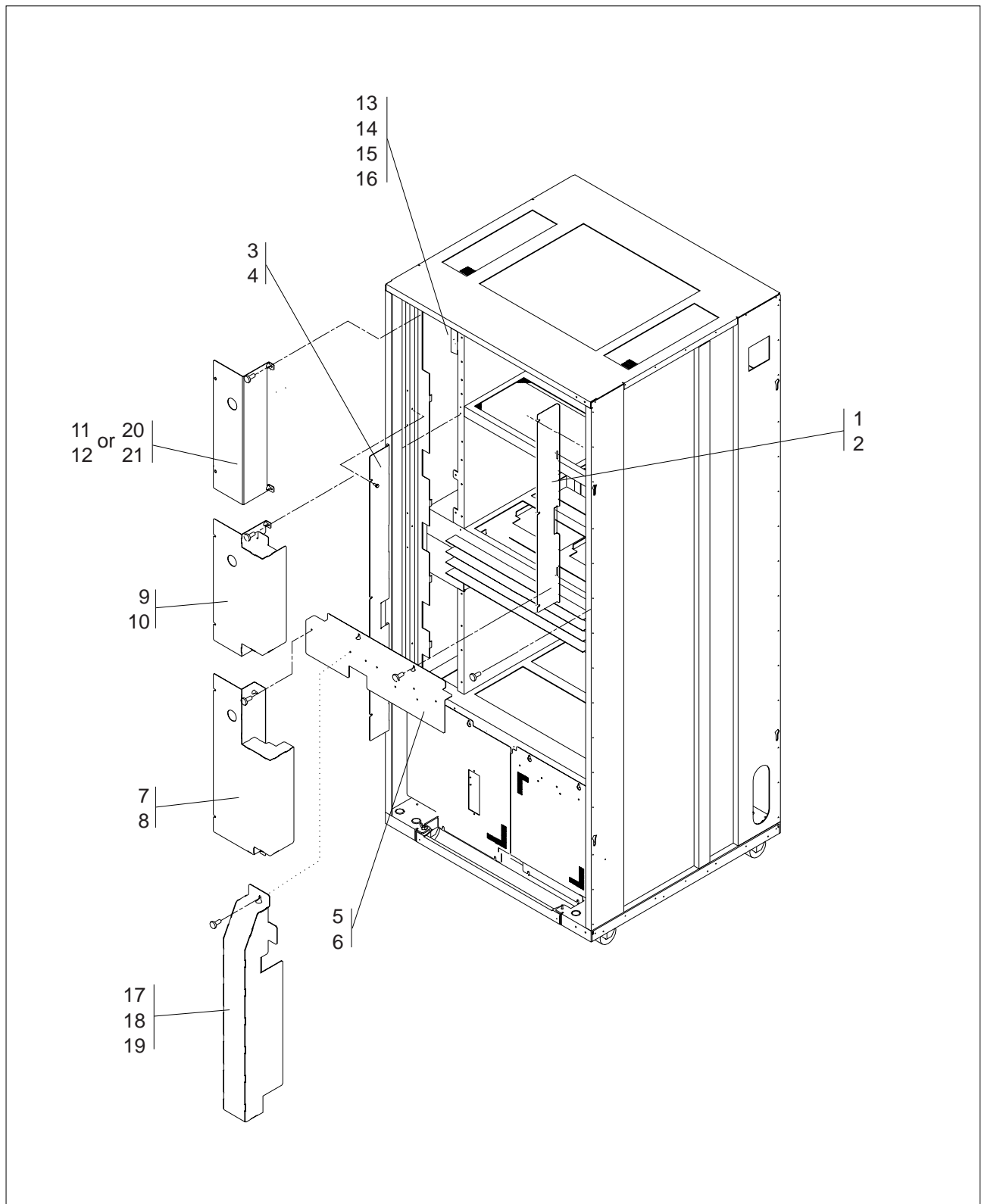
LCBE





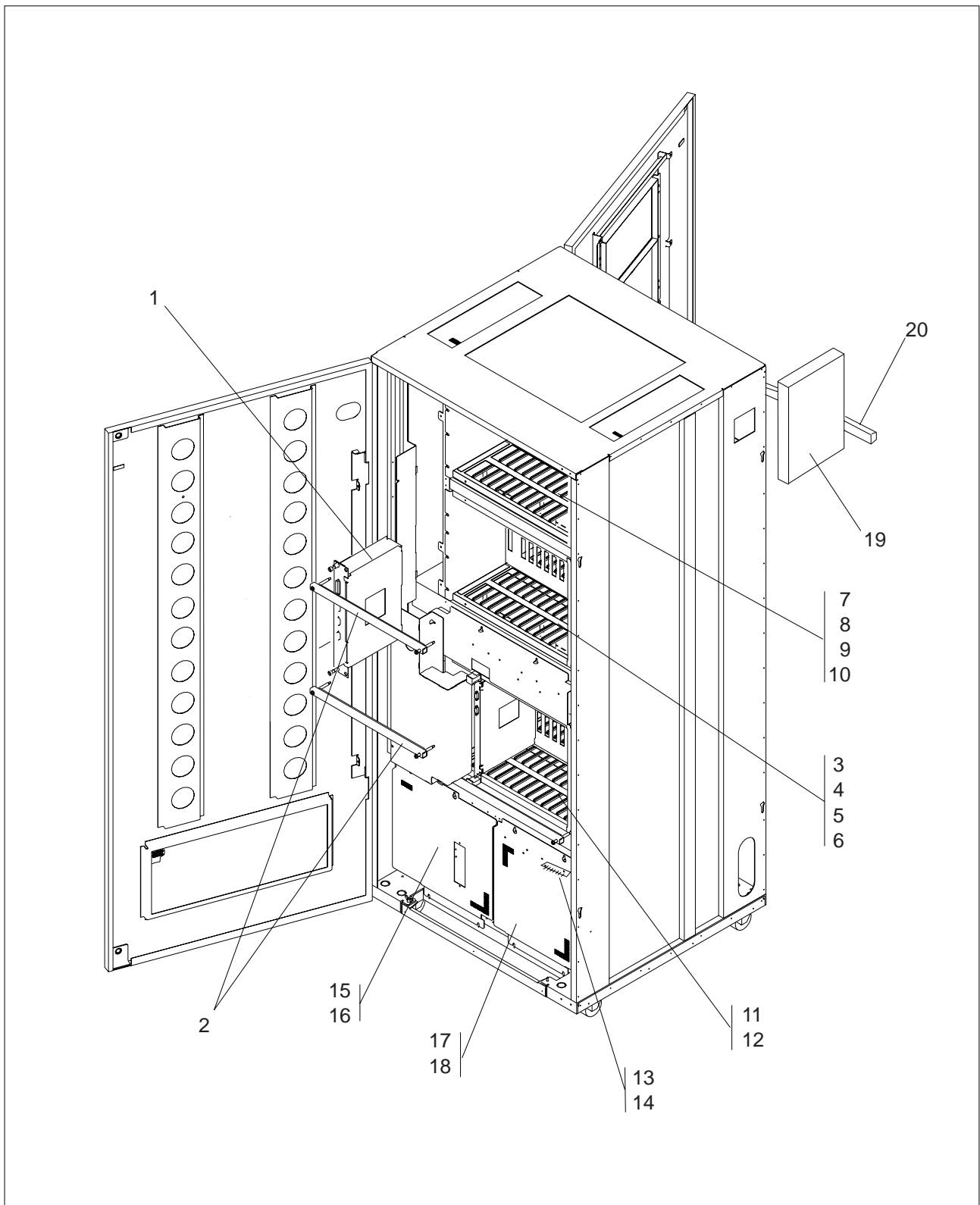
Asm- Index	Part Number	Units	Description
8-	NONE	REF	Final Assembly (Part 6 of 8)
-1	NONE	REF	• Enclosure LCEB
-2	NONE	REF	• Power SMU LCPB
-3	1621170	4	• Screw, Pan HD- M3 X 6 LG
-4	63F2498	1	• Panel
-5	63F2501	1	• Isolation Foil
-6	65X8654	8	• Rivet
-7	61F4592	1	• Cover
-8	NONE	REF	• Enclosure LCEE
-9	NONE	REF	• Power SMU LCPE
-10	1621170	4	• Screw, Pan HD- M3 X 6 LG
-11	17G5839	1	• Panel
-12	63F2501	1	• Isolation Foil
-13	65X8654	8	• Rivet
-14	61F4592	1	• Cover

## Assembly 9: Final Assembly (Part 7 of 8)



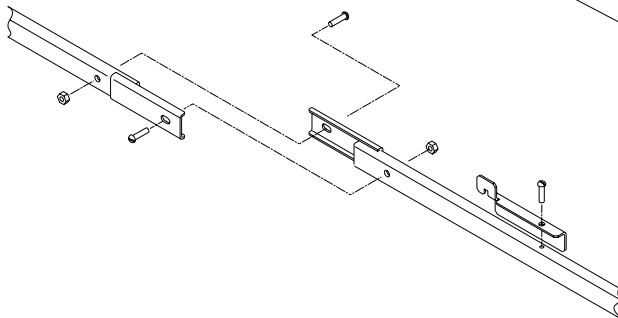
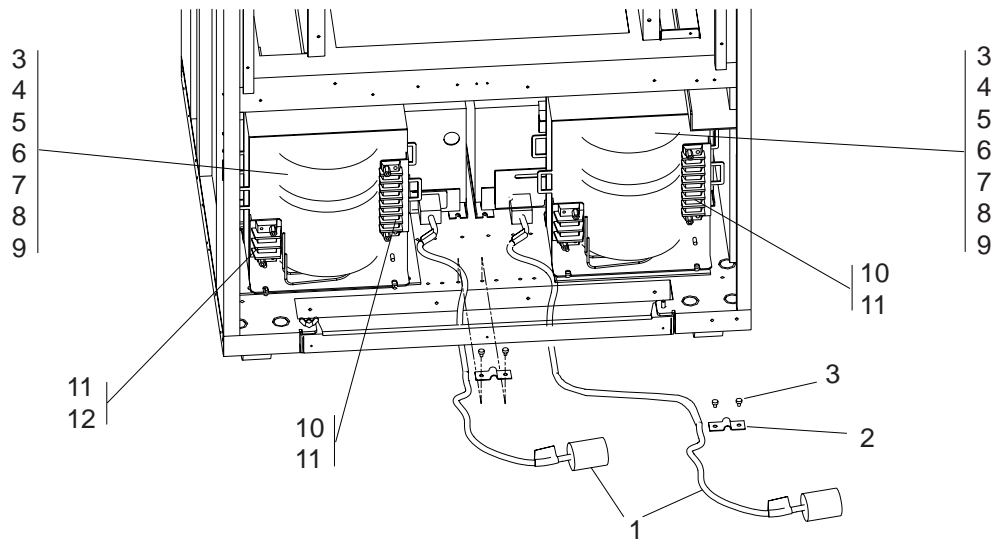
Asm- Index	Part Number	Units	Description
9-	NONE	REF	Final Assembly (Part 7 of 8)
-1	76F9366	1	• Cover
-2	1621191	3	• Screw,Pan HD- M4 X 10 LG
-3	76F9367	1	• Cover
-4	1621191	3	• Screw,Pan HD- M4 X 10 LG
-5	72F1007	1	• Cover
-6	1621191	2	• Screw,Pan HD- M4 X 10 LG
-7	72F1009	1	• Cover
-8	1621191	4	• Screw,Pan HD- M4 X 10 LG
-9	72F1010	1	• Cover
-10	1621191	4	• Screw,Pan HD- M4 X 10 LG
-11	72F1011	1	• Cover
			When Expansion 2 Board ASM is not Present.
-12	1621191	4	• Screw,Pan HD- M4 X 10 LG
-13	72F1047	2	• Bracket
-14	61F4541	2	• Connector
-15	61F4540	2	• Connector
-16	1621191	4	• Screw,Pan HD- M4 X 10 LG
-17	17G5787	1	• Cover for one CBC
			For Model 900 only
-18	17G5788	1	• Cover for two CBC
			For Model 900 only
-19	1621191	2	• Screw,Pan HD- M4 X 10 LG
			For Model 900 only
-20	72F1010	1	• Cover
			When Expansion 2 Board ASM is Present.
-21	1621191	4	• Screw,Pan HD- M4 X 10 LG

## Assembly 10: Final Assembly (Part 8 of 8)



Asm- Index	Part Number	Units	Description
10-	NONE	REF	Final Assembly (Part 8 of 8)
-1	NONE	REF	• Card Assembly SPD2
-2	63F2559	2	• Bracket shipping
-3	61F4612	1	• Expansion 1 Enclosure Assembly
-4	1621210	8	• Screw,Pan HD- M5 X 10 LG
-5	72F1197	1	• Dummy Enclosure (Expansion 1)
-6	1621210	4	• Screw,Pan HD- M5 X 10 LG
-7	61F4612	1	• Expansion 2 Enclosure Assembly
-8	1621210	8	• Screw,Pan HD- M5 X 10 LG
-9	72F1198	1	• Dummy Enclosure (Expansion 2)
-10	1621191	2	• Screw,Pan HD- M4 X 10 LG
-11	61F4611	1	• Basic Enclosure Assembly
-12	1621210	8	• Screw,Pan HD- M5 X 10 LG
-13	84X5763	6	• Guide
-14	1621191	12	• Screw,Pan HD- M4 X 10 LG
-15	61F4571	1	• Cover
-16	1621210	2	• Screw,Pan HD- M5 X 10 LG
-17	03F7647	1	• Cover
-18	1621210	2	• Screw,Pan HD- M5 X 10 LG
-19	NONE	1	• Card CSCE Assembly
-20	63F2558	2	• Bracket Shipping

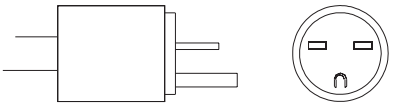
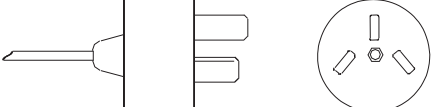
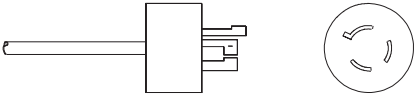
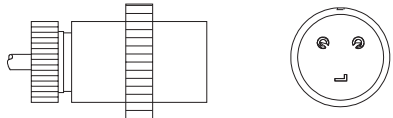
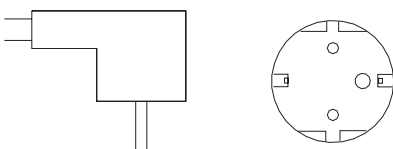
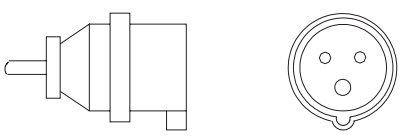
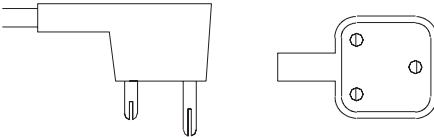
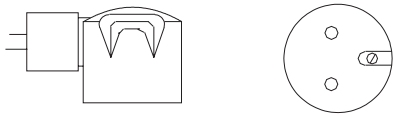
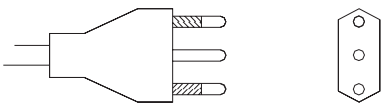
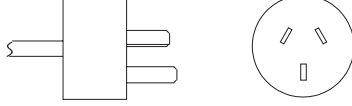
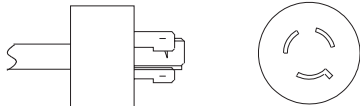
## Assembly 11: AC Power Attachment Cord (Part 1 of 2)



Kit of Parts: Shipped only with transformers

Asm- Index	Part Number	Units	Description
11-	NONE	REF	AC Power Attachment Cord (Part 1 of 3)
-1	NONE	2	<ul style="list-style-type: none"> <li>• AC Power Attachment Cord Assembly</li> </ul> For Detail Breakdown see Asm 8.
-2	2980188	2	<ul style="list-style-type: none"> <li>• Clamp</li> </ul>
-3	1621210	4	<ul style="list-style-type: none"> <li>• Screw,Pan HD- M5 X 10 LG</li> </ul>
-4	34F1425	4	<ul style="list-style-type: none"> <li>• Pad</li> </ul>
-5	1621231	2	<ul style="list-style-type: none"> <li>• Screw,Pan HD- M6 X 16 LG</li> </ul>
-6	17G5921	2	<ul style="list-style-type: none"> <li>• Transformer,50 Hz</li> </ul> Shipped with tool handles
-6	17G5922	2	<ul style="list-style-type: none"> <li>• Transformer,60 Hz</li> </ul> Shipped with tool handles
-7	1621596	8	<ul style="list-style-type: none"> <li>• Screw,Hex HD- M6 X 16 LG</li> </ul>
-8	34F1425	4	<ul style="list-style-type: none"> <li>• Absorber</li> </ul>
-9	1621596	8	<ul style="list-style-type: none"> <li>• Screw,Hex HD- M6 X 16 LG</li> </ul>
-10	438890	2	<ul style="list-style-type: none"> <li>• Shield</li> </ul>
-11	1621181	4	<ul style="list-style-type: none"> <li>• Screw,Pan HD- M3.5 X 6 LG</li> </ul>
-12	61F4549	2	<ul style="list-style-type: none"> <li>• Shield</li> </ul>

## Assembly 12: Power Attachment Cord (Part 2 of 2)

<p><b>5</b></p>  <p>250 V 15 A</p>	<p><b>32</b></p>  <p>250 V 16 A</p>
<p><b>10</b></p>  <p>250 V 15 A</p>	<p><b>34</b></p>  <p>250 V 15 A</p>
<p><b>18</b></p>  <p>250 V 16 A</p>	<p><b>46</b></p>  <p>250 V 16 A</p>
<p><b>22</b></p>  <p>250 V 16 A</p>	<p><b>49</b></p>  <p>250 V 16 A</p>
<p><b>25</b></p>  <p>250 V 16 A</p>	<p><b>54</b></p>  <p>250 V 15 A</p>
<p><b>29</b></p>  <p>250 V 18 A</p>	



Asm- Index	Part Number	Units	Description
12-	NONE	REF	Power Attachment Cord (Part 3 of 3)
-5	14F1548	1	• Power Attachment Cord Assembly, 4,30 m
-10	14F1550	1	• Power Attachment Cord Assembly, 4,30 m
-18	14F1554	1	• Power Attachment Cord Assembly, 4,30 m
-22	14F1557	1	• Power Attachment Cord Assembly, 4,30 m
-25	14F1560	1	• Power Attachment Cord Assembly, 4,30 m
-29	14F1553	1	• Power Attachment Cord Assembly, 4,30 m
-32	14F1561	1	• Power Attachment Cord Assembly, 4,30 m
-34	86F2645	1	• Power Attachment Cord Assembly, 1,80 m
-34	86F2646	1	• Power Attachment Cord Assembly, 4,30 m
-46	14F1555	1	• Power Attachment Cord Assembly, 4,30 m
-49	14F1558	1	• Power Attachment Cord Assembly, 4,30 m
-54	14F1559	1	• Power Attachment Cord Assembly, 4,30 m



## Part Number Index

Part Number	Asm-Index	Page	Part Number	Asm-Index	Page	Part Number	Asm-Index	Page
NONE	1-	3	11F6256	3-4	7	1621191	continued	
	2-	5	11F6272	4-18	9		9-8	19
	3-	7		5-27	11		9-10	19
	4-	9	11F6274	2-36	5		9-12	19
	4-20	9	14F1548	12-5	25		9-16	19
	4-23	9	14F1550	12-10	25		9-19	19
	5-	11	14F1553	12-29	25		9-21	19
	5-21	11	14F1554	12-18	25		10-10	21
	5-24	11	14F1555	12-46	25		10-14	21
	6-	13	14F1557	12-22	25	1621194	4-2	9
	6-1	13	14F1558	12-49	25		5-2	11
	7-	15	14F1559	12-54	25	1621197	2-6	5
	7-7	15	14F1560	12-25	25		2-34	5
	8-	17	14F1561	12-32	25		4-4	9
	8-1	17	1621170	4-8	9		5-4	11
	8-2	17		4-22	9		7-4	15
	8-8	17		4-25	9		7-6	15
	8-9	17		5-23	11		7-8	15
	9-	19		5-26	11	1621210	2-3	5
	10-	21		6-14	13		3-8	7
	10-1	21		6-17	13		3-12	7
	10-19	21		6-20	13		3-15	7
	11-	23		6-23	13		3-23	7
	11-1	23		8-3	17		6-5	13
	12-	25		8-10	17		6-7	13
80651	5-20	11	1621172	5-16	11		6-9	13
438890	11-10	23		5-30	11		10-4	21
03F4471	2-14	5	1621181	5-19	11		10-6	21
03F4844	2-19	5		11-11	23		10-8	21
	2-20	5	1621191	2-13	5		10-12	21
	2-21	5		2-32	5		10-16	21
03F7483	2-8	5		3-3	7		10-18	21
03F7484	2-23	5		3-5	7		11-3	23
03F7491	3-11	7		3-10	7	1621212	1-6	3
03F7492	4-14	9		3-17	7		1-8	3
03F7522	6-3	13		3-20	7	1621229	2-39	5
03F7551	5-12	11		4-11	9	1621231	11-5	23
03F7609	3-6	7		4-13	9	1621596	11-7	23
03F7610	3-6	7		4-17	9		11-9	23
03F7620	3-7	7		4-19	9	1622290	2-35	5
03F7625	3-14	7		5-7	11	1622302	4-21	9
03F7647	6-8	13		5-9	11		4-24	9
	10-17	21		5-14	11		5-22	11
03F7664	3-13	7		5-28	11		5-25	11
03F7761	2-33	5		6-11	13	1693573	2-10	5
09G3002	2-21A	5		9-2	19		2-25	5
09G3003	1-3	3		9-4	19	17G5787	9-17	19
09G3004	1-4	3		9-6	19	17G5788	9-18	19

Part Number	Asm-Index	Page	Part Number	Asm-Index	Page	Part Number	Asm-Index	Page
17G5839	8-11	17	61F4557	6-18	13	72F1023	2-38	5
17G5852	2-6A	5	61F4561	7-1	15	72F1033	4-7	9
	2-12	5	61F4571	6-6	13	72F1047	9-13	19
	2-31	5		10-15	21	72F1154	2-37	5
	3-18	7	61F4592	8-7	17	72F1165	7-5	15
	3-21	7		8-14	17	72F1197	3-22	7
17G5921	11-6	23	61F4611	6-4	13		10-5	21
17G5922	11-6	23		10-11	21	72F1198	3-9	7
2980188	4-16	9	61F4612	10-3	21		10-9	21
	5-13	11		10-7	21	72F1229	4-6	9
	11-2	23	63F2448	2-4	5	72F1250	3-16	7
34F1425	11-4	23	63F2462	3-1	7		3-19	7
	11-8	23	63F2480	3-2	7	76F9366	9-1	19
34F1434	4-26	9	63F2498	8-4	17	76F9367	9-3	19
34F1436	4-26	9	63F2501	8-5	17	84X5763	6-10	13
34F1438	4-26	9		8-12	17		10-13	21
34F1440	4-26	9	63F2558	10-20	21	86F2645	12-34	25
34F1442	4-26	9	63F2559	6-2	13	86F2646	12-34	25
34F1444	4-26	9		10-2	21			
34F1448	1-1	3	6406240	2-24	5			
	2-7	5	6406241	2-2	5			
34F1449	1-2	3	6494763	2-5	5			
	2-22	5	6495760	1-5	3			
43G3154	5-18	11	6495997	2-16	5			
4521357	5-15	11		2-27	5			
5267931	2-11	5	6495999	2-18	5			
	2-30	5		2-29	5			
5351156	7-2	15	6496002	2-17	5			
5351163	7-3	15		2-28	5			
58G5314	1-7	3	6496007	2-1	5			
58G5505	5-11	11	65X8654	8-6	17			
58G5506	5-17	11		8-13	17			
58G5507	5-29	11	65X8879	2-15	5			
58G5514	5-10	11		2-26	5			
58G5525	5-31	11	72F1000	4-5	9			
58G5526	5-31	11	72F1002	4-15	9			
58G5527	5-31	11	72F1003	4-3	9			
58G5528	5-31	11		5-3	11			
58G5529	5-31	11	72F1007	9-5	19			
58G5530	5-31	11	72F1009	9-7	19			
58X9250	2-9	5	72F1010	9-9	19			
61F4540	9-15	19		9-20	19			
61F4541	9-14	19	72F1011	9-11	19			
61F4549	11-12	23	72F1013	4-1	9			
61F4553	6-13	13		5-1	11			
	6-16	13	72F1021	4-9	9			
	6-19	13		5-5	11			
	6-22	13	72F1022	4-10	9			
61F4554	6-12	13		4-12	9			
61F4555	6-15	13		5-6	11			
61F4556	6-21	13		5-8	11			

---

# Tell Us What You Think!

## 3746 Nways Multiprotocol Controller Models 900 and 950 Parts Catalog

Publication No. S135-2015-02

We hope you find this publication useful, readable, and technically accurate, but only you can tell us! Your comments and suggestions will help us improve our technical publications. Please take a few minutes to let us know what you think by completing this form. If you are in the USA, you can mail this form postage free or fax it to us at 1-800-253-3520. Elsewhere, your local IBM branch office or representative will forward your comments or you may mail them directly to us.

Overall, how satisfied are you with the information in this book?	Satisfied	Dissatisfied
	<input type="checkbox"/>	<input type="checkbox"/>

How satisfied are you that the information in this book is:	Satisfied	Dissatisfied
Accurate	<input type="checkbox"/>	<input type="checkbox"/>
Complete	<input type="checkbox"/>	<input type="checkbox"/>
Easy to find	<input type="checkbox"/>	<input type="checkbox"/>
Easy to understand	<input type="checkbox"/>	<input type="checkbox"/>
Well organized	<input type="checkbox"/>	<input type="checkbox"/>
Applicable to your task	<input type="checkbox"/>	<input type="checkbox"/>

Specific comments or problems:

---

---

---

Please tell us how we can improve this book:

---

---

---

Thank you for your comments. If you would like a reply, provide the necessary information below.

Name

Address

Company or Organization

Phone No.



Fold and Tape

Please do not staple

Fold and Tape



NO POSTAGE  
NECESSARY  
IF MAILED IN THE  
UNITED STATES



## BUSINESS REPLY MAIL

FIRST-CLASS MAIL PERMIT NO. 40 ARMONK, NEW YORK

POSTAGE WILL BE PAID BY ADDRESSEE

Design & Information Development  
Dept. CGF/Bldg. 656  
International Business Machines Corporation  
PO BOX 12195  
RESEARCH TRIANGLE PARK NC 27709-9990



Fold and Tape

Please do not staple

Fold and Tape

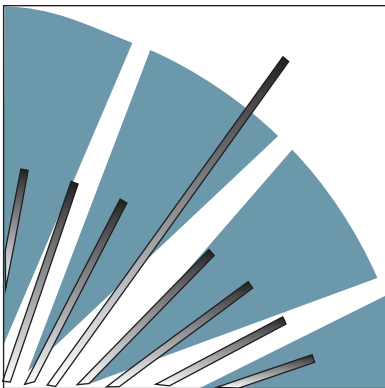




Part Number: 03K5464



Printed in the United States of America  
on recycled paper containing 10%  
recovered post-consumer fiber.



S135-2015-02



03K5464

