

# 3745 MOSS console alternative

## PURPOSE

In some Geographies or countries, the IBM 3151 and 3153 ASCII Displays is discontinued from maintenance services on 12/31/2005. They are the last available MOSS console for the 3745-XX0 models.

It is the customer's responsibility to provide a replacement console machine based on a Personal System and the IBM 3101 emulator from NetTerm.

## REQUIREMENTS FOR THE CUSTOMER

- The MOSS console replacement must be an IBM compatible Personal System or Thinkpad with a built-in RS-232 serial port (no Personal System with the USB to RS-232 adapter)

- Running any version of Windows: 95, 98, 2000, NT, XP.
- Order the NetTerm product from <http://www.secureneterm.com>

The price is \$29.95 each for 1 to 5 users. To download a trial version select the Current NetTerm Versions: nt32511i.exe

- Install NetTerm on the Personal system or Thinkpad.

## CONNECT THE PERSONAL SYSTEM TO THE 3745-XX0 (local console position)

- If the current console cable is the IBM P/N 65X8669, 3F4946, 3F4401 or 3F4949, perform the connection as follows:

Local console cable <---> Gender Changer <---> 25-9 pins adapter <---> PS  
Black Box FA412-R2      Black Box FA520A-R3

To order the Black Box adapters: <http://www.blackbox.com>

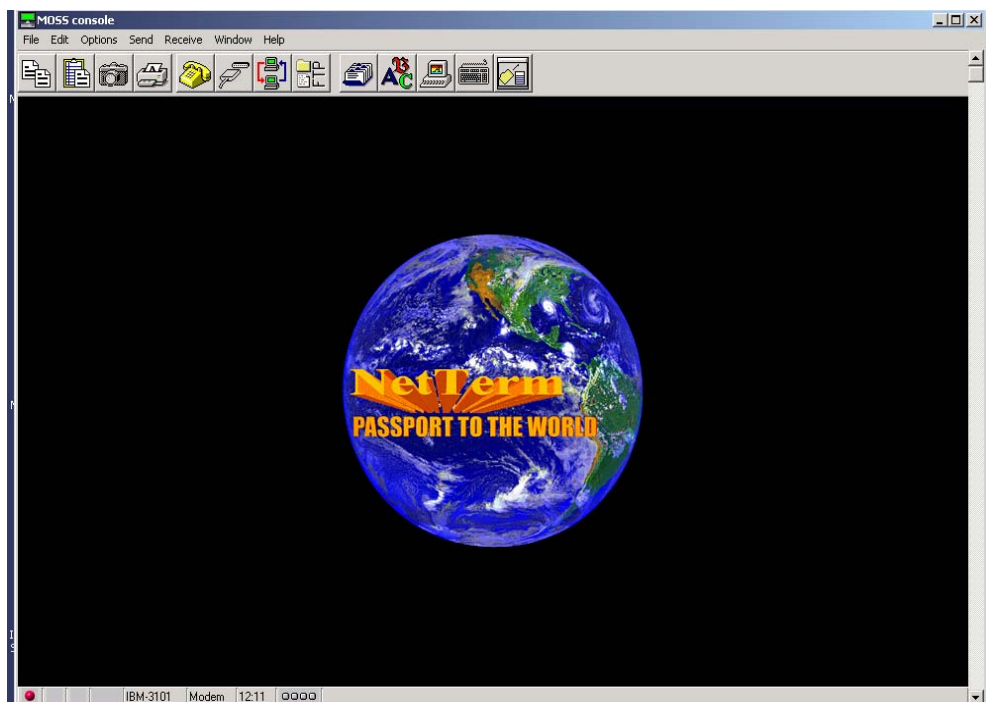
- If the current console cable is the IBM P/N 3F4487, 3F4948, 65X8984, 3F5026 with the interposer 54F0489, perform the connection as follows:


Local console cable <-> Interposer <-> Gender Changer <-> 25-9 pins adapter <-> PS

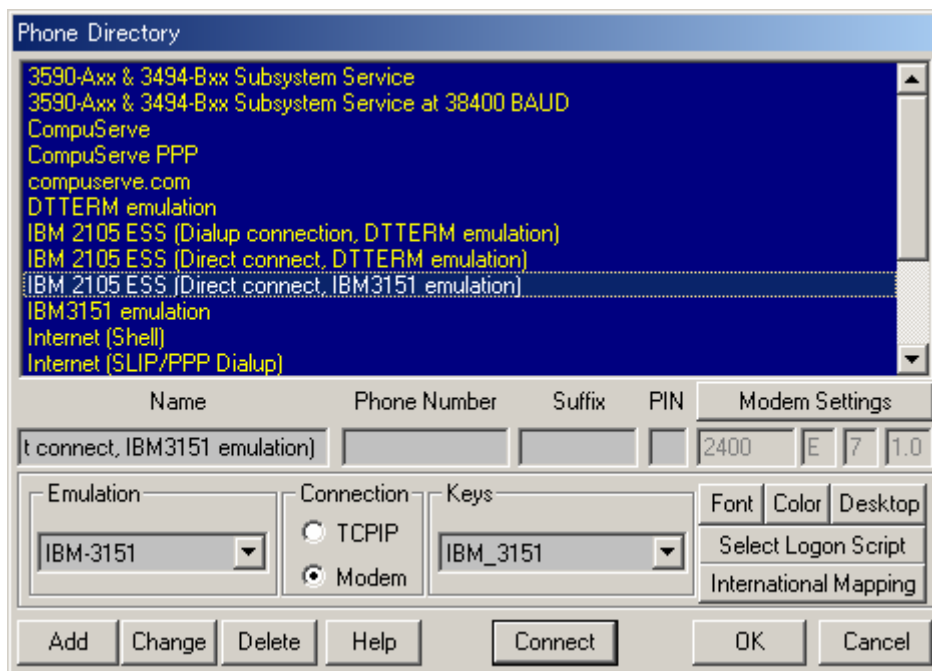
Black Box FA412-R2    Black Box FA520A-R3

## NETTERM SET-UP

1. Start NetTerm program

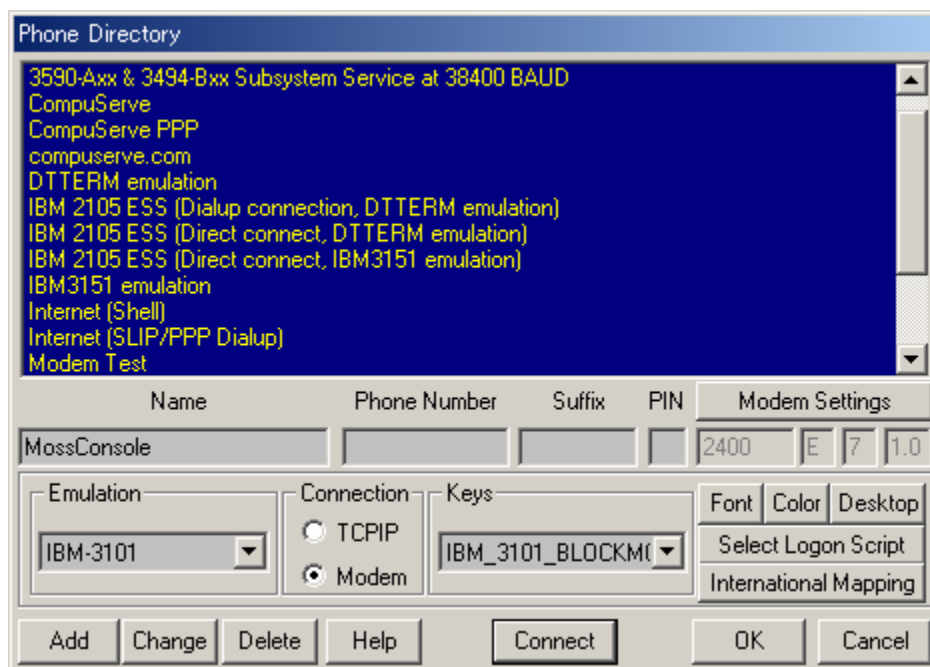


2. Click  (or click the File menu and select the Phone Directory)



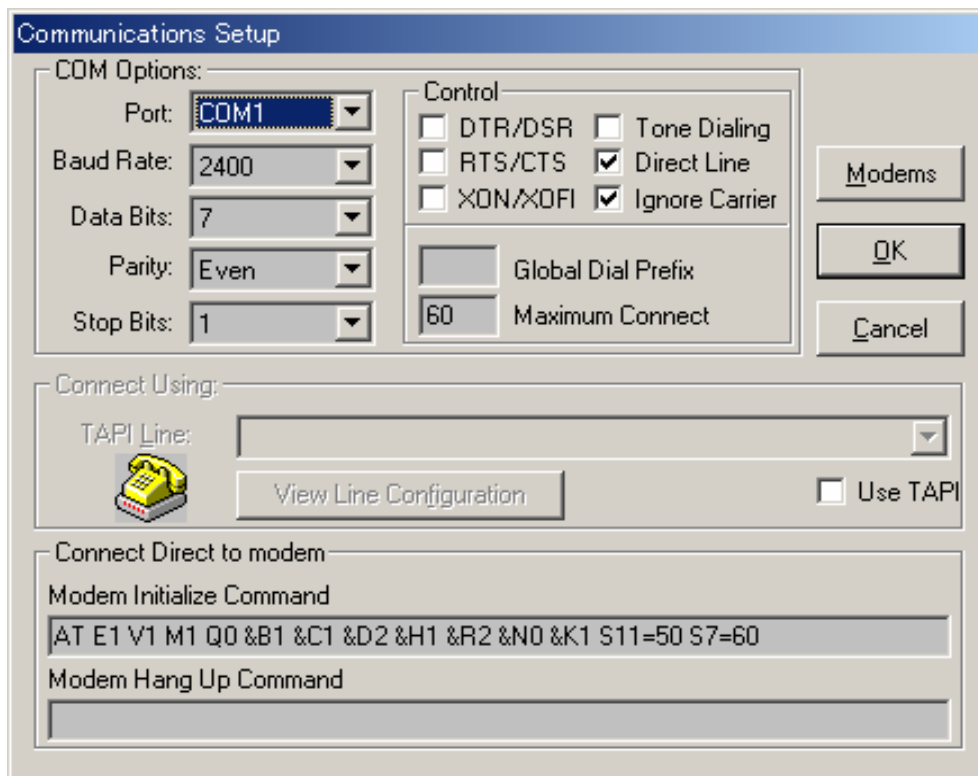
3. Type MossConsole in the Name field then select the following in appropriate locations:

- Emulation = IBM-3101
- Keys = IBM\_3101\_BLOCKMODE

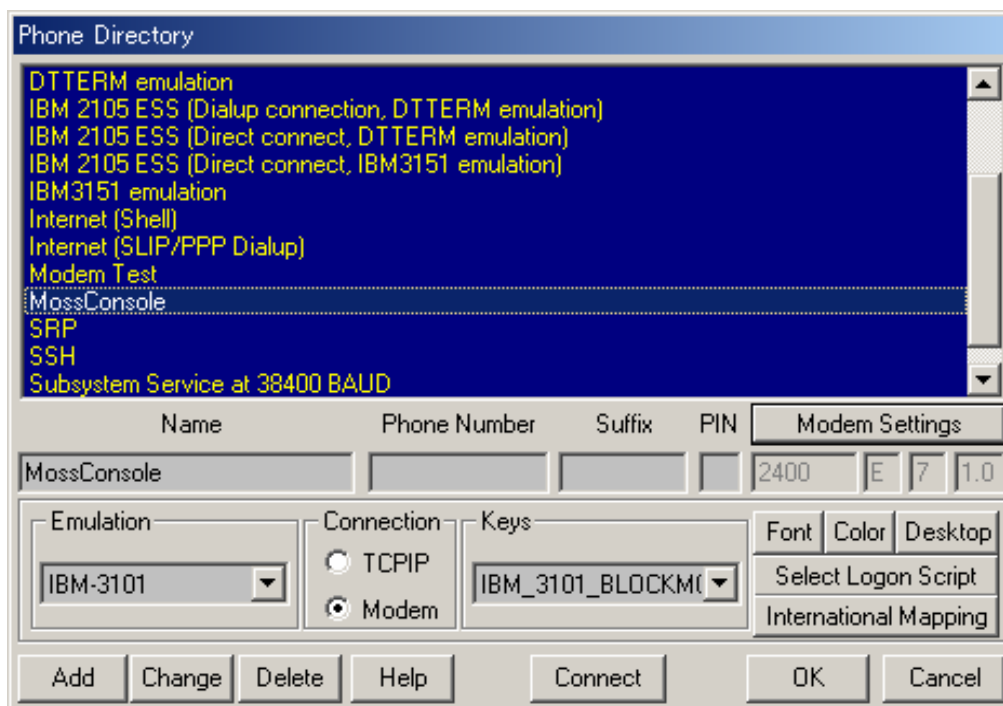


4. Click Modem Settings and Select the followings in the COM options then click OK

- COM1(select the PC's com port),2400,7,Even,1,Direct Line, Ignore Carrier



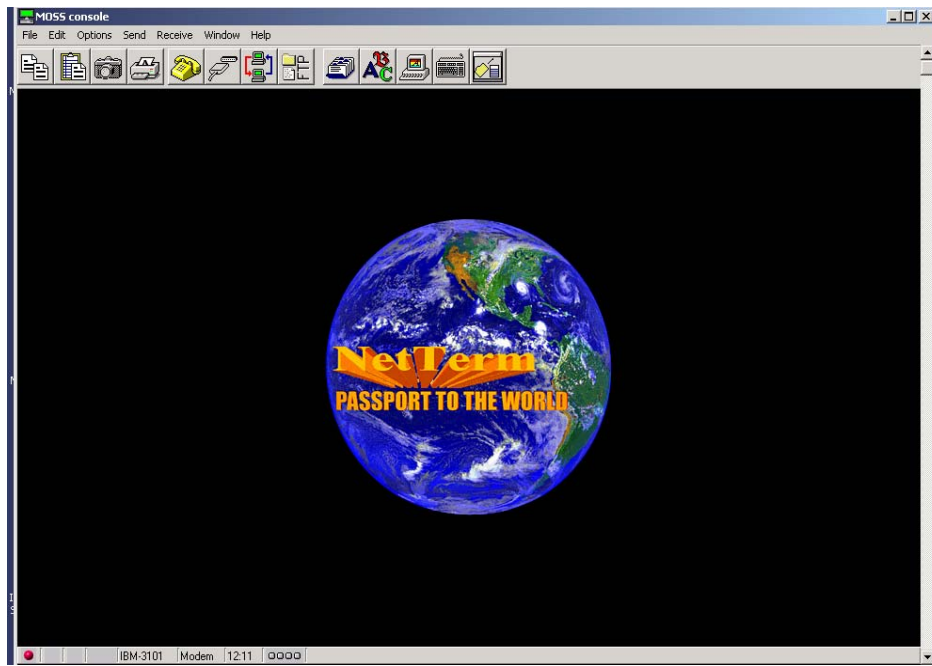
5. Click Add: the MOSS console is set up.



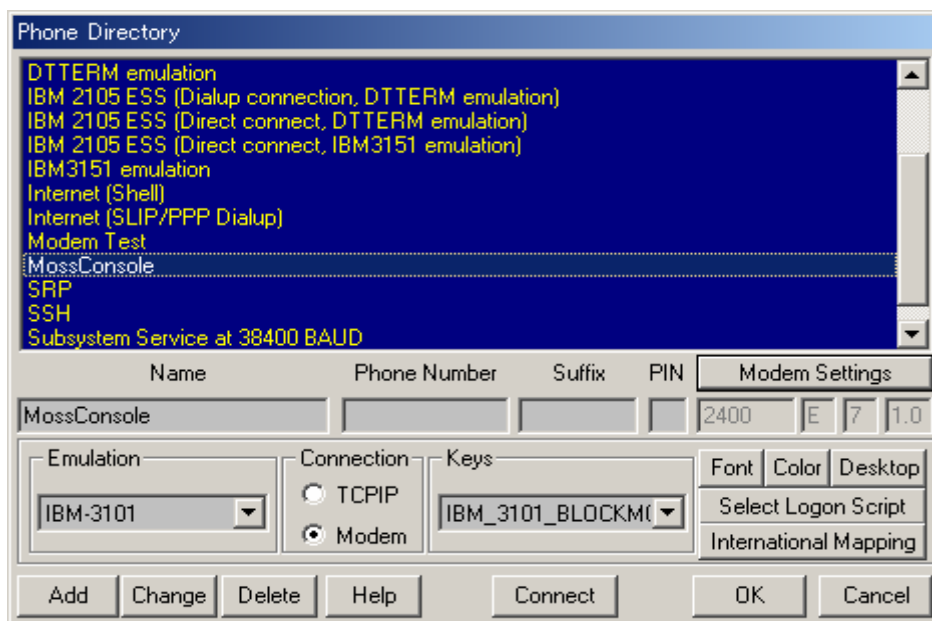
6. Click Cancel to terminate.

## OPERATE THE MOSS CONSOLE

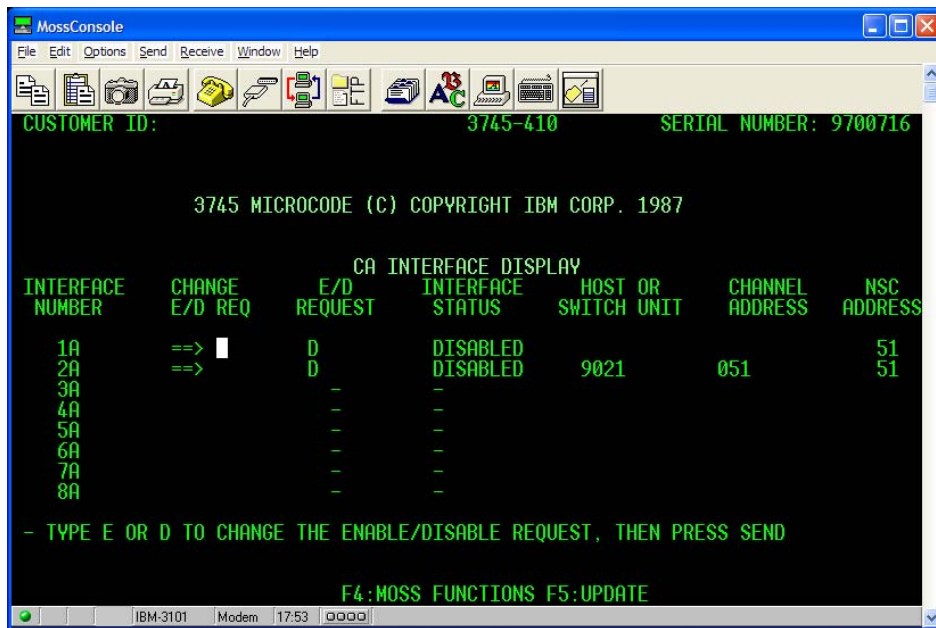
### 1. Start NetTerm program



### 2. Click (or click the File menu and select the Phone Directory)



### 3. Select MOSSConsole and click Connect: connection is established (left bottom corner becomes green)



4. If the connection does not establish: perform a MOSS IML (3745 panel function 1 plus validate)
5. Use the MOSS console as usual (if the selected MOSS function performs a permanent refresh display, to stop refresh: click on Edit Menu and select Send Long Break)
6. Enter OFF to Log off MOSS session.
7. To terminate NetTerm: click on File Menu and select the Disconnect then click again on File menu and select Exit.