

## **Field Feature Bill of Material**

**PN 10K8542**

### **Installation of 3746 Extended Functions 4 (FC 5811) on IBM 3746 Model 9X0.**

Written by: F. Martin  
Checked by: C. Franoux  
Approved by: A. Badino  
Reviewed by: J. Wicks

3746 FFBM	PN 10K8542 1 of 10	EC F64805 16 JUL 1999				
--------------	-----------------------	--------------------------	--	--	--	--



## Before Installation (Steps 1-8)

### 1.0 Machines Affected

IBM 3746 Model 9X0.

*This feature should only be applied on the machine serial for which it is specified.*

### 2.0 Related BMs and ECs

#### 2.1 Prerequisites

(Must be installed prior to this installation)

Service processor type 2, or service processor type 3, or upgrade to service processor type 3.

Microcode Level: EC F64810 or higher.

If level is not present you must upgrade the Service Processor and the 3746-9x0.

**Note:** Refer to 2.2, "Displaying the Level of Code Installed" for displaying the level of code.

#### 2.2 Displaying the Level of Code Installed

1. On **MOSS-E View** window, click on **help**.
2. On **Help** window, click on **About**
3. On the **MOSS-E View About** window, click on **Licenced Internal Code**. On the window obtained the code EC number is displayed.
4. Click on **Close**, then **OK** to leave the function.

#### 2.3 Concurrent ECs

(Must be installed together)

None.

## 2.4 Companion ECs

(May be installed together)  
None.

## 3.0 BMs to be Installed

Feature BM	Feature Name
10K8542	3746 Extended Functions 4 (FC 5811)

## 4.0 Preparation

1. Familiarize yourself with the purpose and details of the installation instruction before negotiating machine time with the customer.
2. Verify that the 2 password sheets - Form (PN 10K8543) are received and provides the passwords needed to enable the software features.
3. Obtain the Service Processor Maintenance Password from the customer.

## 5.0 Programming

### 3746 Models 900 and 950 have a new requirement on NPM.

As of July 30, 1999, all new 3746s and 3746 upgrades which include the newly available Licensed Internal Code (F64810) have the following software requirement on NetView Performance Monitor (NPM):

The reporting of active PU counts per TIC3, which is provided by the 3746 and MAE Extended Functions 4 (feature 5810 or 5811), requires NPM Version 2 Release 4 with APAR OW37743 (PTF UW59877) at minimum.

This APAR is required also for NPM users who do not need the reporting of active PUs per TIC3, but are operating the 3746 and MAE Extended Functions 4 (FC 5810 or FC 5811), or 3746 Extended Functions 2 (FC 5802) or any machine equipped with Licensed Internal Code at the engineering change level F64810 or above.

The APAR is available for the following NPM releases:

- NPM V2R2 (PTF UW59809)
- NPM V2R3 (PTF UW59810)
- NPM V2R4 (PTF UW59877)

## 6.0 Purpose and Description

The extended functions 4 (FC 5811) provides the user with capability to upgrade a 3746 from any combination of the following installed features to the 3746 and MAE Extended Functions 4 (FC 5810).

- 3746 Extended Functions 1 (FC 5800)
- 3746 Extended Functions 3 (FC 5801)
- MAE Extended Functions 1 (FC 5804)
- MAE Extended Functions 2 (FC 5805)
- MAE Extended Functions 3 (FC 5807)

The installed configuration must include (FC 5800) or (FC 5804) at a minimum.

## 7.0 Installation Time

FFBM	Machine Hrs.	System Hrs.	Nbr of CEs
10K8542	0.5	0.0	1

## 8.0 Tools/Material Required

None.

## Installation (Steps 9-12)

### 9.0 Safety

Not applicable.

### 10.0 Details of Installation.

- \_\_\_ Ensure that 3746-9x0 is powered ON and IML'd.
- \_\_\_ Ask the Customer to stop the traffic on the 3746-9x0.

#### 10.1 Unlocking the Extended Functions 4

- \_\_\_ 1. If not already logged, enter the **Service Processor Maintenance Password** (Default is IBM3745).
- \_\_\_ 2. Double click on the **Service Processor** object icon.
- \_\_\_ 3. Click on "**Configuration Management**".
- \_\_\_ 4. Double click on "**Manage 3745/3746-9x0 installation/Removal**"
- \_\_\_ 5. On the Controller Installation menu: Click on the 3746-950 or the 3746-900NN, on which the feature should be installed, then Click on **Select Feature** button.

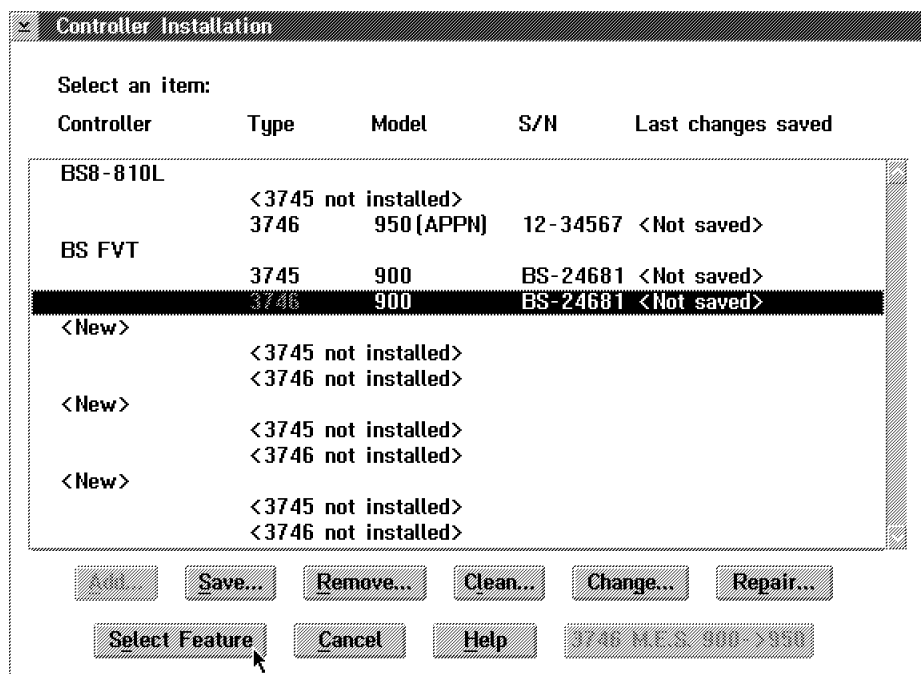


Figure 1. Controller Installation

6. On the **Features Selection** display:
  - a. Click on the **3746Multiaccess Enclosure (FC 5810/5811) Extended Functions 4.** selection box.
  - b. Enter the corresponding password (The password is recorded on the forms - PN 10K8543).
  - c. Click on **OK** button.

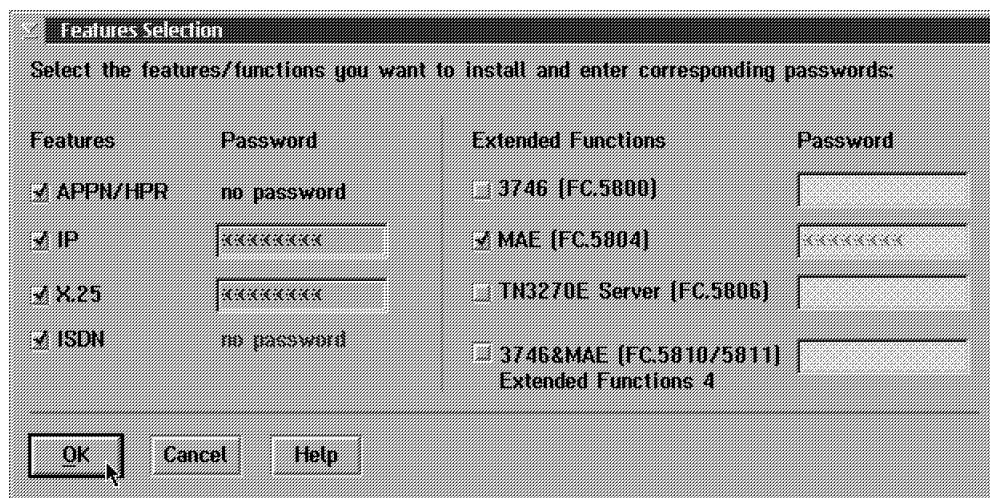


Figure 2. Features Selection

7. On the **Features selection successful message** display:

- If an error is reported,
  - Note message and code, click on **"OK"**, then
  - Contact your support.
- If no error is reported, click on **OK**

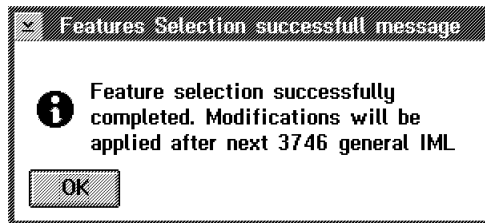


Figure 3. Features Selection Successfull Message

## 10.2 Activating the Installed Feature

- \_\_\_ 1. From the **MOSS-E View** screen, double click on the **Controller 3746-9x0** object icon, on which the feature has been installed.
- \_\_\_ 2. Click on **Operation Management**.
- \_\_\_ 3. Double click on **Perform General IML**.

### 10.2.1 Saving Configuration Parameters on Diskette

- \_\_\_ 1. Double click on the **"service processor object icon"**.
- \_\_\_ 2. Click on **"Operation Management"**.
- \_\_\_ 3. Double click on **"Manage Disks and Databases"**.
- \_\_\_ 4. Click on **"Save databases on diskette"**, and click on **"OK"**.
- \_\_\_ 5. Insert the **configuration parameters diskette** (1.44 diskette, PN 02L3427) and follow the prompts.
- \_\_\_ 6. When the save is completed, click on **"Cancel"** to exit from the function.

## 10.3 Returning the Machine to the Customer

- \_\_\_ 1. Inform the Customer or his representative, that the 3746-9x0 is now ready to support the Extended Functions 4.
- \_\_\_ 2. Tell the customer that the traffic can be started.
- \_\_\_ 3. Give the customer one of the Extended Functions 4 password sheets (Form - PN 10K8543).



## 11.0 Test Procedures

No test required.

## 12.0 Field Updating

None.

---

## After Installation (steps 13-15)

### 13.0 Publications Update

File the second Extended Functions 4 password sheet in the SPIM binder (PN 29H4852).

### 14.0 Parts Disposition

Not applicable

### 15.0 Machine Records

- Install the new **MACHINE HISTORY** supplied.
- Report installation and quality problems using existing procedures.

**End of instructions.**