

Field Feature Bill of Material

PN 99J6236

**Remove Multiaccess Enclosure (FC 3000)
on IBM 3746 Model 9X0.**

Written by: F. Martin
Checked by: C. Franoux
Approved by: A. Badino
Reviewed by: J. Wicks

3745 FFBM	PN 99J6236 1 of 22	EC F64822 19 MAR 1999				
--------------	-----------------------	--------------------------	--	--	--	--

Before Installation (Steps 1-8)

1.0 Machines Affected

3746 Models 9X0 with a Network Node Processor FC 5022 and with a Multiaccess Enclosure (FC 3000) installed.

This feature should only be applied on the machine serial for which it is specified.

2.0 Related BMs and ECs

2.1 Prerequisites

None.

2.2 Concurrent ECs

(Must be installed together)

None.

2.3 Companion ECs

(May be installed together)

None.

3.0 BMs to be Installed

FFB/M	Title
99J6236	Remove Multiaccess Enclosure (FC 3000).

4.0 Preparation

- Familiarize yourself with the purpose and details of the installation instruction.
- The removing of the Multiaccess Enclosure has no impact on customer operations.

5.0 Programming

None.

6.0 Purpose and Description

Remove a Multiaccess Enclosure.

7.0 Installation Time

FFBM	Machine Hrs.	System Hrs.	Nbr of CE
99J6236	1	00.0	1

No impact on 3746-9x0 customer operations.

8.0 Tools/Material Required

ESD kit (PN 6428316).

Installation (Steps 9-11)

9.0 Safety

Review the **Safety Notices** and the **Safety Inspection Procedures** located at the beginning of the *Multiaccess Enclosure Installation and Maintenance Guide*, SY33-2118.

10.0 Details of Installation

10.1 Deleting the Configuration Parameters

Delete your multiaccess enclosure parameters from the MOSS-E hard disk as follows:

1. Double click on the "3746-9x0 object icon"
2. Click on "Operation Management"
3. Click on "Multiaccess Enclosure Management", double click on "Remove Multiaccess Enclosure",

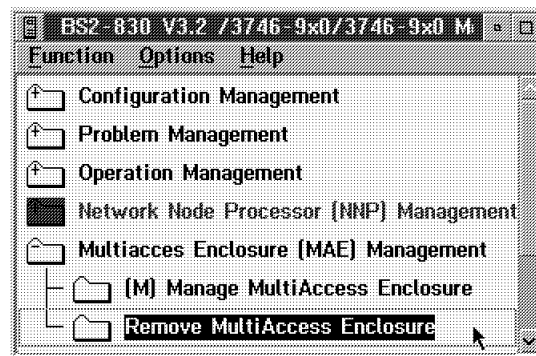


Figure 1. 3746-9X0 Multiaccess Enclosure Management

4. Click on "Yes"

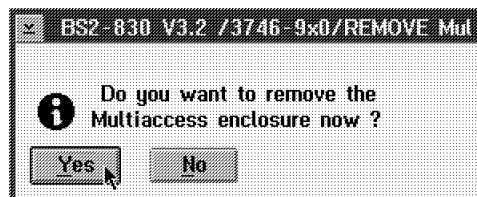


Figure 2. Remove Multiaccess Enclosure

5. Click on "OK"

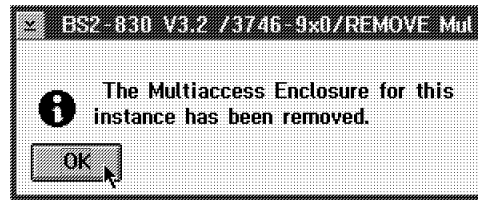


Figure 3. Remove Multiaccess Enclosure

10.2 Shutting Down the MAE

1. Power OFF all the power installed in the MAE. Disconnect all the power cable from the power outlet.

10.3 Removing the MAE Cables

Depending on the service processor type installed, Go to:

- **7585**, 10.4, "MAE Connected to a 7585" on page 8
- **3172**, 10.5, "MAE Connected to a 3172" on page 10
- **9585**, 10.6, "MAE Connected to a 9585" on page 12

10.4 MAE Connected to a 7585

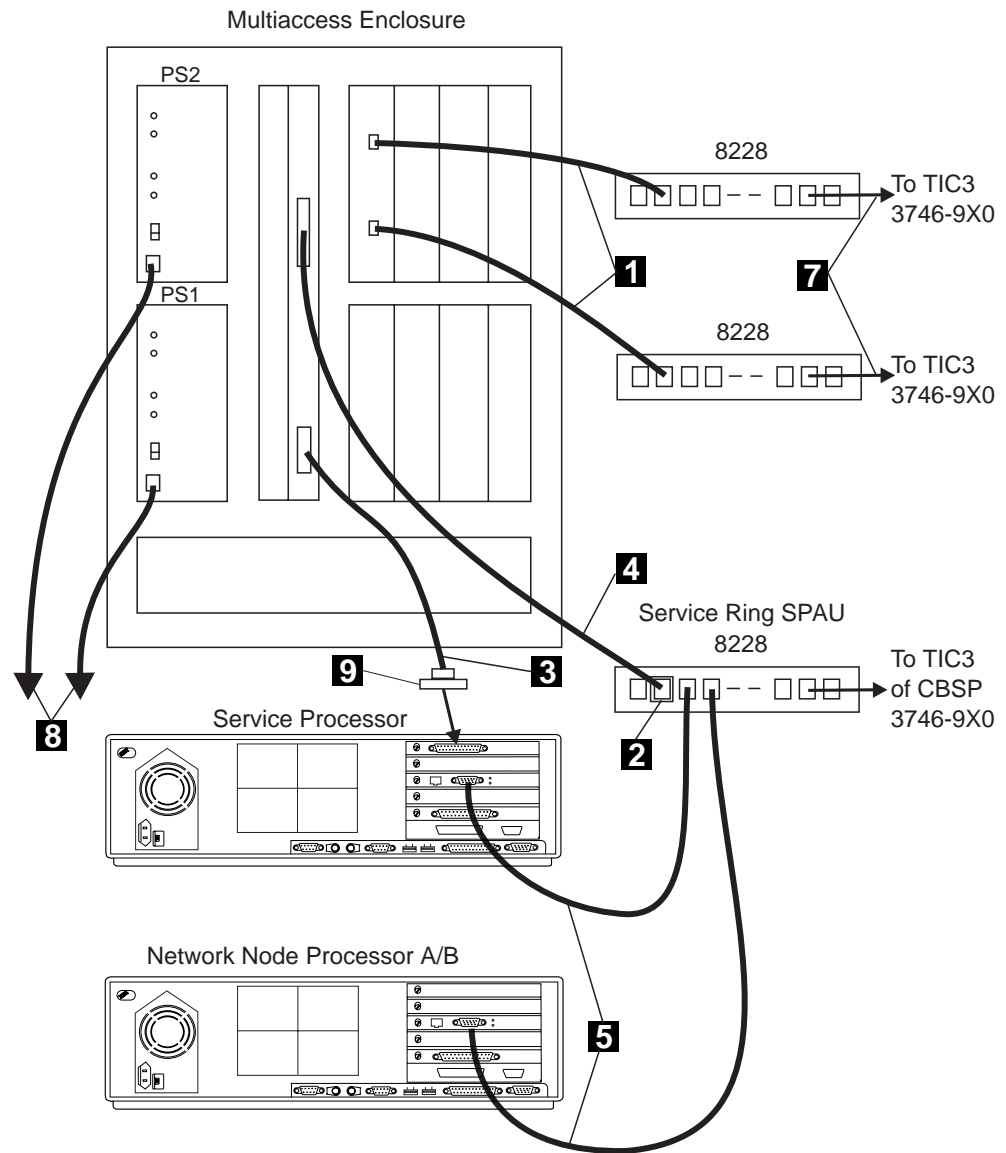


Figure 4. Cabling the Multiaccess Enclosure to a 7585

Disconnect the MAE from the service processor and 3746-9x0 as follows:

1. Disconnect the MAE power cord(s) **8** from the ac outlet distribution box.
2. Disconnect the two cables **1** from the MAE adapter position 1 and from the 8228 if installed.
3. Disconnect the two cables **7** from the 3746-9X0 TIC3 adapter and from the 8228 if installed.
4. Disconnect cable **4** from the PCMCIA card, and from the 8228. Remove also the connector connector **2**.

5. Disconnect cable **3** from the connector EIA-232 of the system card. Disconnect the other end of this cable from the convertor **9**.
6. Disconnect the convertor **9** from the COM 2 connector (upper slot) of the service processor.
7. Disconnect all the external cables from slot 2 to 8 of the MAE.

Go to 10.7, “Removing the MAE from the Controller Expansion” on page 14

--	--	--	--	--

10.5 MAE Connected to a 3172

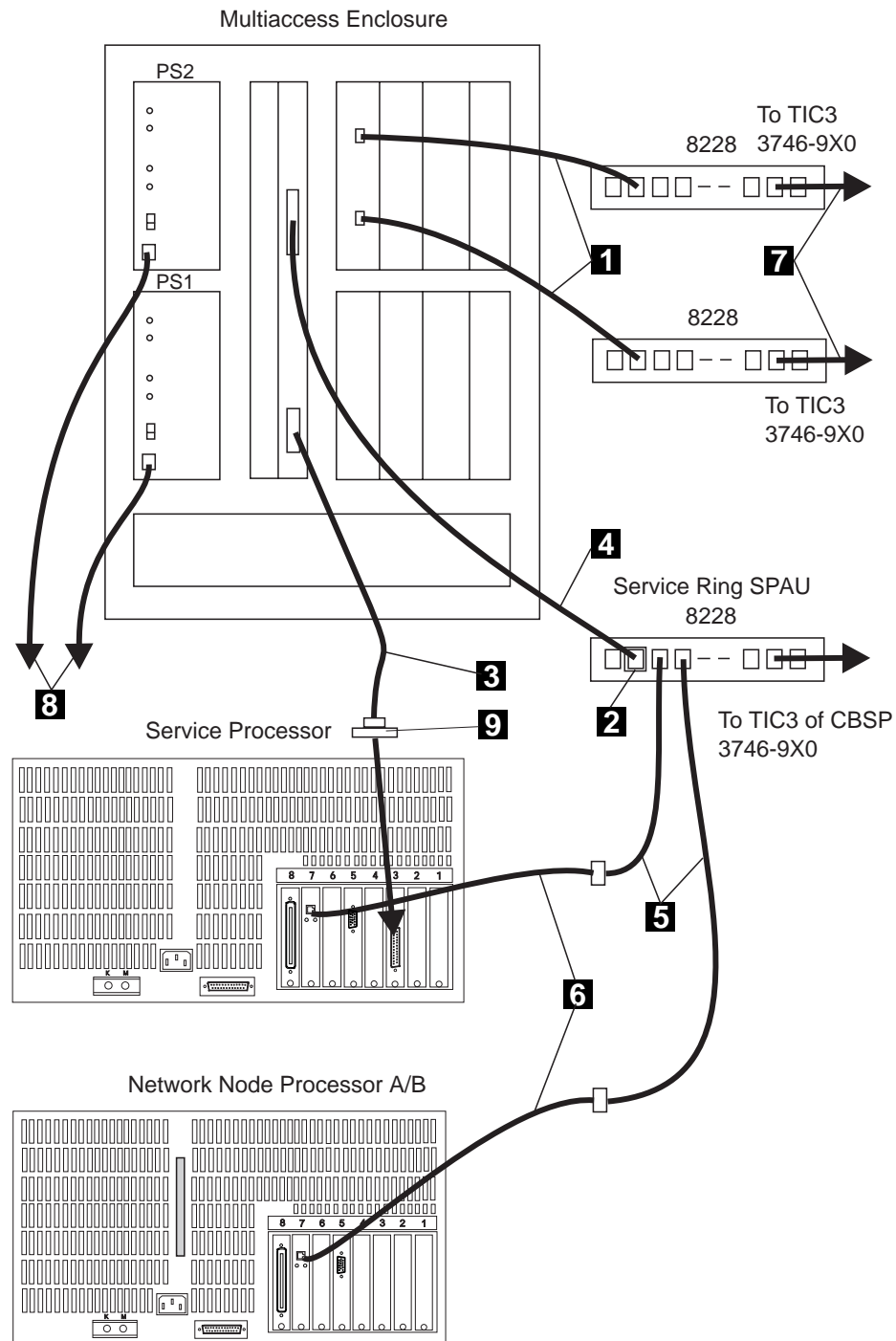


Figure 5. Cabling the Multiaccess Enclosure to a 3172

Disconnect the MAE from the service processor and 3746-9x0 as follows:

1. Disconnect the MAE power cord(s) **8** from the ac outlet distribution box.

2. Disconnect the two cables **1** from the MAE adapter position 1 and from the 8228 if installed.
3. Disconnect the two cables **7** from the 3746-9X0 TIC3 adapter and from the 8228 if installed.
4. Disconnect cable **4** from the PCMCIA card, and from the 8228. Remove also the connector connector **2**.
5. Disconnect cable **3** (PN 782958) from the connector EIA-232 of the system card. Disconnect the other end of this cable from the convertor **9** (PN 782982).
6. Disconnect the convertor **9** from the COM 2 connector of the service processor.
7. Disconnect all the external cables from slot 2 to 8 of the MAE.

Go to 10.7, “Removing the MAE from the Controller Expansion” on page 14

10.6 MAE Connected to a 9585

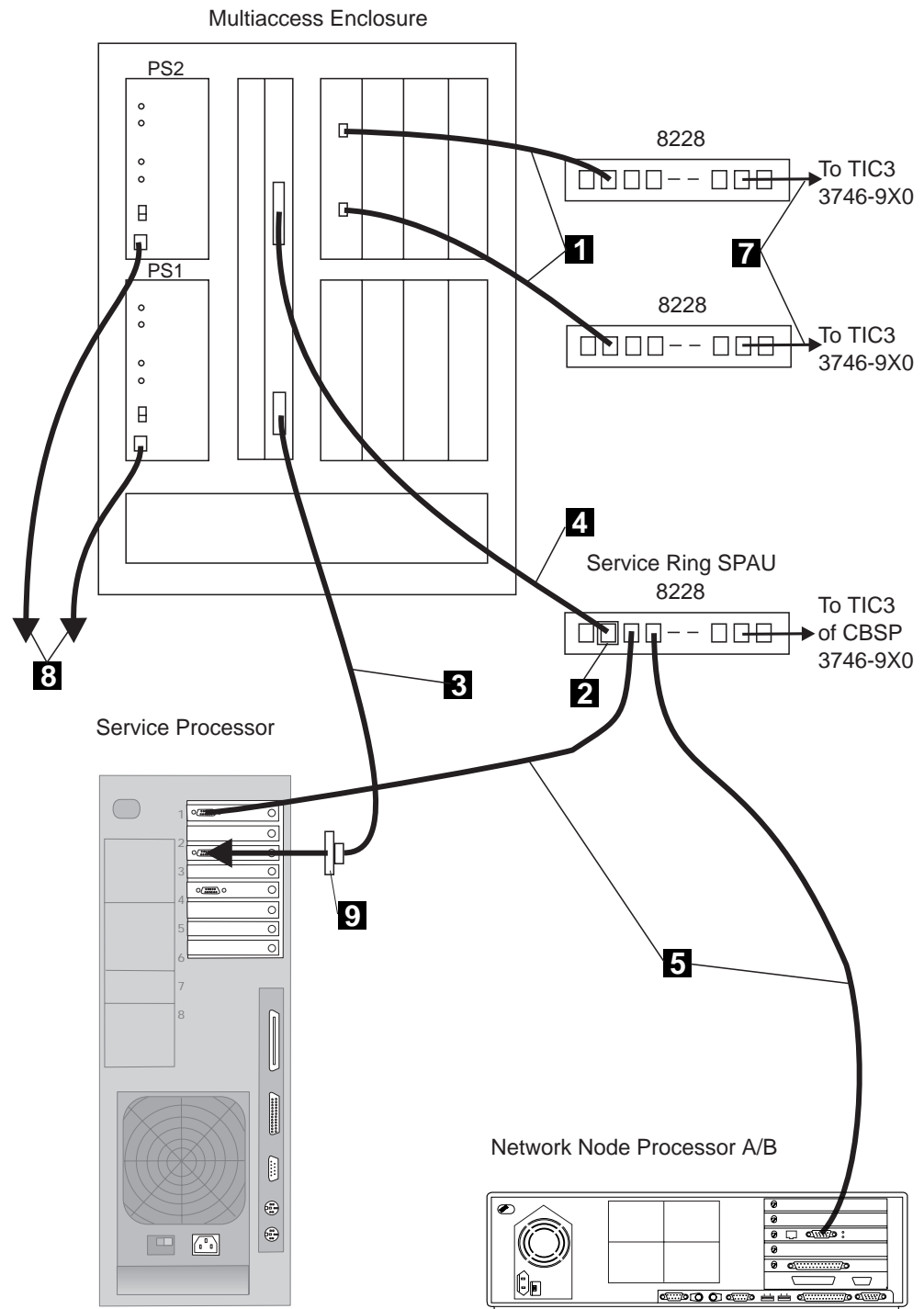


Figure 6. Cabling the Multiaccess Enclosure to a 9585

Disconnect the MAE from the service processor and 3746-9x0 as follows:

1. Disconnect the MAE power cord(s) **8** from the ac outlet distribution box.

2. Disconnect the two cables **1** from the MAE adapter position 1 and from the 8228 if installed.
3. Disconnect the two cables **7** from the 3746-9X0 TIC3 adapter and from the 8228 if installed.
4. Disconnect cable **4** from the PCMCIA card, and from the 8228. Remove also the connector connector **2**.
5. Disconnect cable **3** from the connector EIA-232 of the system card. Disconnect the other end of this cable from the convertor **9**.
6. Disconnect the convertor **9** from the COM 2 connector of the service processor.
7. Disconnect all the external cables from slot 2 to 8 of the MAE.

Go to 10.7, "Removing the MAE from the Controller Expansion" on page 14

10.7 Removing the MAE from the Controller Expansion

1. In order to make the MAE easier to lift, remove the fan tray, and all power supply.

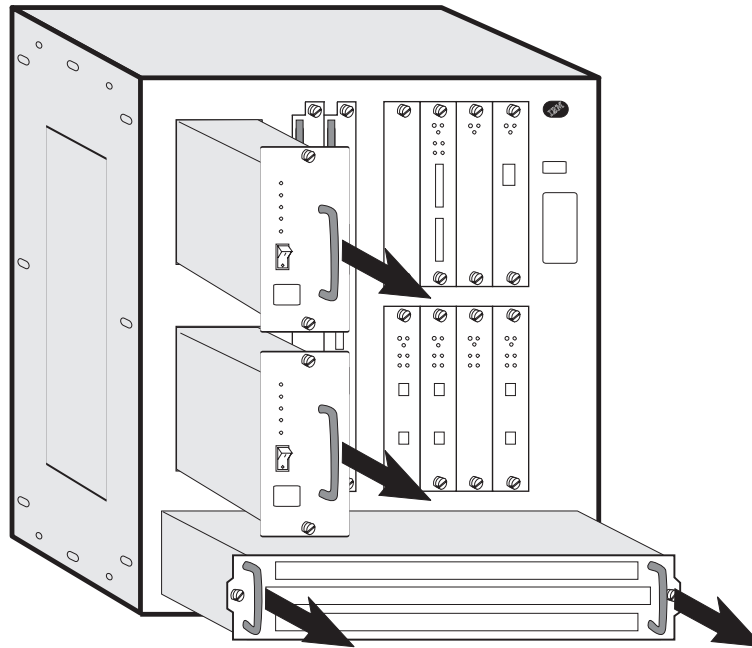


Figure 7. Fan Tray and Power Removal

2. From the rear of the controller expansion, (see Figure 8 on page 15) Remove the two screws **1**

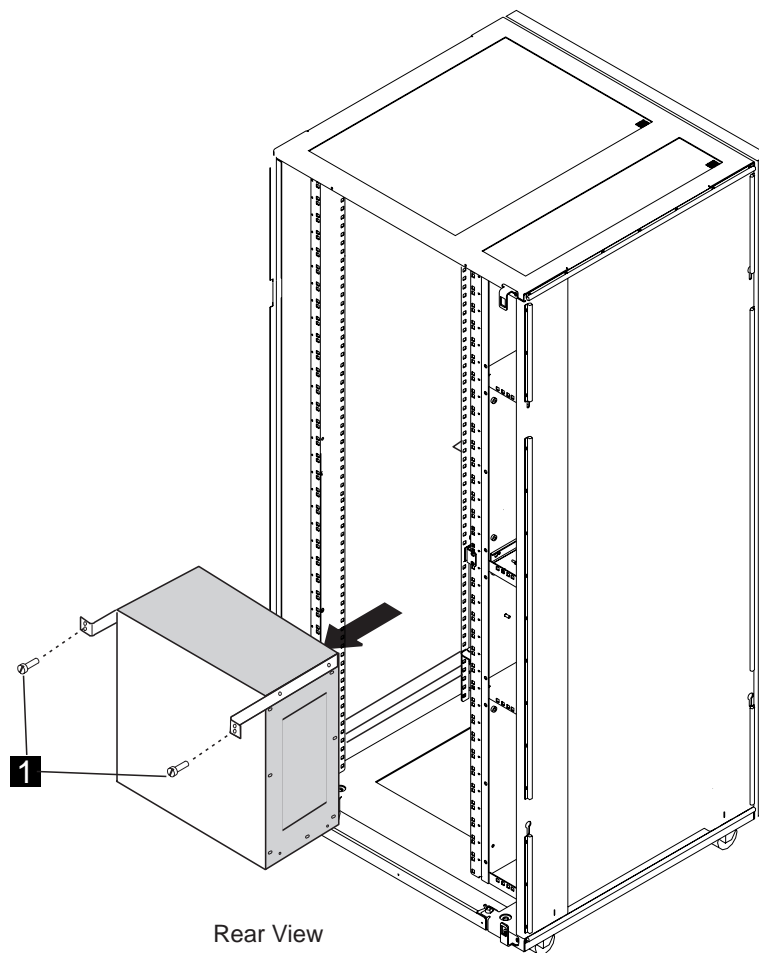


Figure 8. MAE Removal from the Controller Expansion

3. From the rear of the controller expansion slide the MAE out.
4. Remove the four screws **3** to remove the two brackets **2** from the right and left side of the MAE .

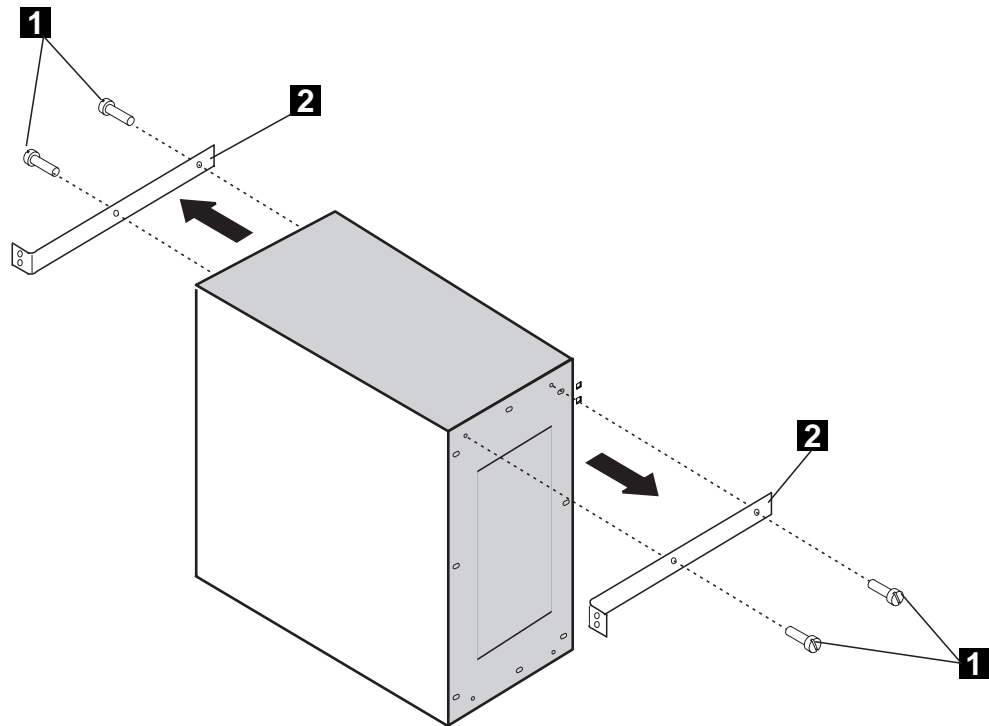


Figure 9. Fan Tray and Power Installation

5. Reinstall the fan tray, and all the power supply into the MAE. Make sure that all the screws which secure all these parts are secured.

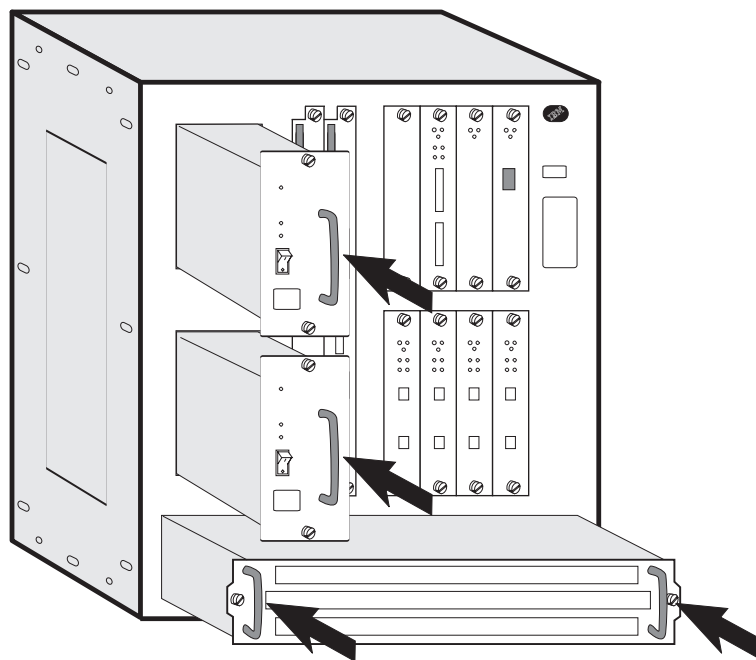
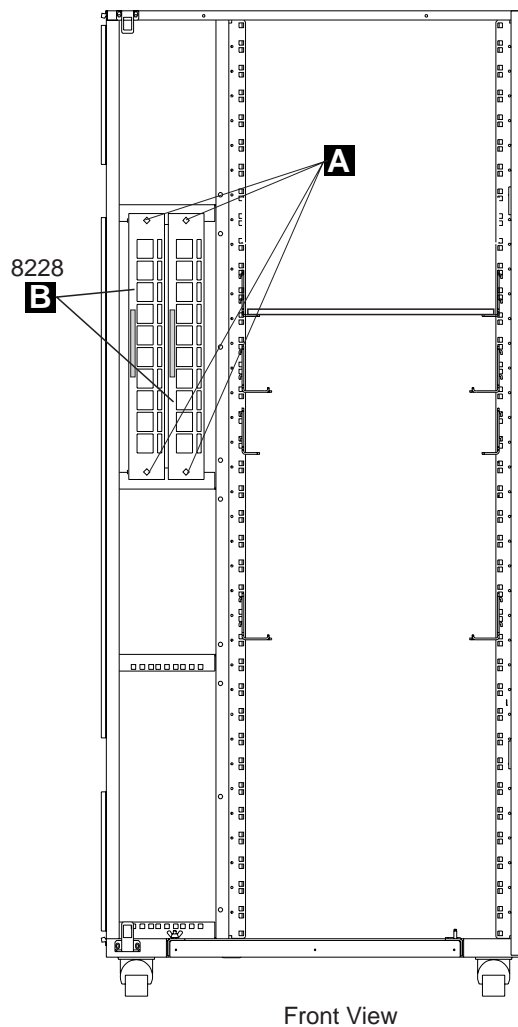


Figure 10. Fan Tray and Power Installation

10.8 Removing the 8228s

1. Remove the screws **A** , and remove the two 8228s **B** from the controller expansion



Front View

Figure 11. Removing the 8228 from the Controller Expansion

10.8.1 Remove the ac Outlet Distribution Box

Attention

Perform this procedure if there is no power cord plugged into the ac outlet distribution box. Otherwise go to 10.8.2, "Remove the Brackets into the Controller Expansion" on page 19.

1. Remove the screws **C** to remove the ac outlet distribution box **B** close to the first ac outlet distribution box.
2. Slide out the ac outlet distribution box **B**.
3. Disconnect the ground jumper **A** between the ac outlet distribution box.

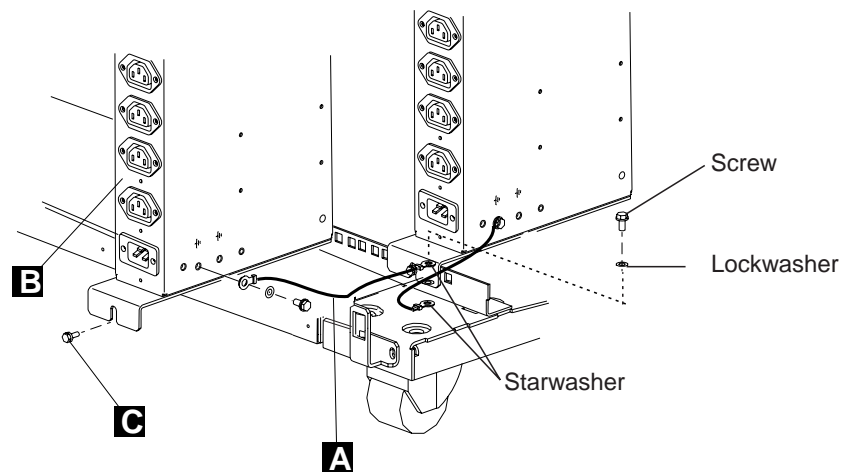


Figure 12. Removing of ac Outlet Distribution Box

10.8.2 Remove the Brackets into the Controller Expansion

1. Remove the four screws **1** to remove the brackets **2** on which the MAE was installed.
2. Slide the brackets up to remove them.

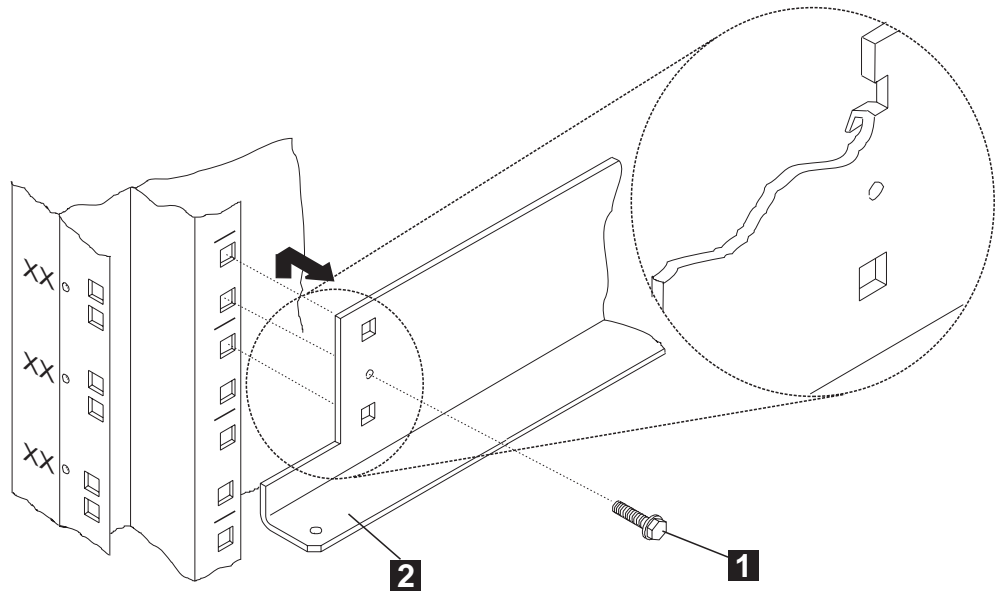


Figure 13. Removing of Brackets supporting the MAE in Controller Expansion

10.8.3 Remove the Captive Nuts

1. Remove all the captive nuts used previously to secure all the parts removed (see Figure 14).

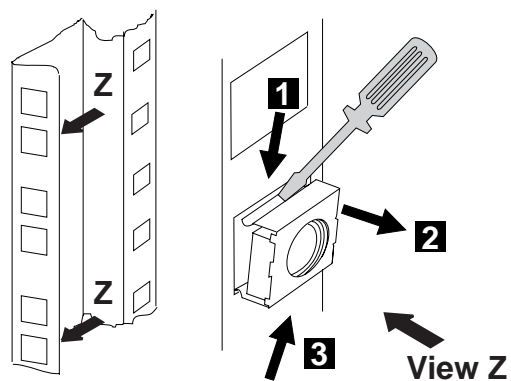


Figure 14. Captive Nuts Removal

11.0 Test Procedures

No test required.

12.0 Field Updating

None.

After Installation (steps 13-15)

13.0 Publications Update

None.

14.0 Parts Disposition

14.1 Purchased Machines

Return parts to the customer.

15.0 Machine Records

- Install the new **MACHINE HISTORY** supplied.
- Report installation and quality according to existing procedures.

End of instructions.