



Field Feature Bill of Material

PN 02L3508

**Installation of MAE Extended Functions (FC 5804)
on IBM 3746 Model 9X0 with**

Multiaccess Enclosure Feature 3000

Written by: J. Michaut
Checked by: C. Franoux
Approved by: A. Badino
Reviewed by: B. Kelly



PN 02L3508 2 of 10	EC F12391 05 DEC 97				
-----------------------	------------------------	--	--	--	--

Before Installation (Steps 1-8)

1.0 Machines Affected

IBM 3746 Model 9X0.

This feature should only be applied on the machine serial for which it is specified.

2.0 Related BMs and ECs

2.1 Prerequisites

(Must be installed prior to this installation)

Microcode Level: EC F12380 or higher.

Checkpoint: Check that the CSS 1 EC level is F123XX.000.

If level is not present you must upgrade the Service Processor and the 3746-9x0.

Note: Refer to **Chapter 3, Displaying the EC Level of Code** in:

- *Service Processor Installation and Maintenance Based on PS/2 9577, SY33-2095, or*
- *Service Processor Installation and Maintenance Based on PS/2 9585, SY33-2109, or*
- *Service Processor Installation and Maintenance Based on 3172, SY33-2111, or*
- *Service Processor Installation and Maintenance (Based on 7585, 3172, 9585, and 9577), SY33-2115.*

2.2 Concurrent ECs

(Must be installed together)

None.

2.3 Companion ECs

(May be installed together)

None.

3.0 BMs to be Installed

Feature BM	Feature Name
02L3508	MAE Extended Functions (FC 5804)

4.0 Preparation

1. Familiarize yourself with the purpose and details of the installation instruction before negotiating machine time with the customer.
2. Verify that the 2 password sheets - Form (PN 02L3890) are received and provides the passwords needed to enable the software features.
3. Obtain the Service Processor Maintenance Password from the customer.

5.0 Programming

None.

6.0 Purpose and Description

To provide the microcode functions, not included in the base Licensed Internal Code (LIC) of the 3746-9x0.

- Interactive Network NetDispatcher
- RIP V2
- Enhanced ATM adapters: LIC294, LIC295
- Native HPR over ATM
- Branch Extender
- Other enhancements in the area of :
 - ATM
 - WAN (Frame Relay, PPP, ISDN)
 - APPN/HPR, DLSw and IP

7.0 Installation Time

FFBM	Machine Hrs.	System Hrs.	Nbr of CEs
02L3508	0.5	0.0	1

8.0 Tools/Material Required

None.



Installation (Steps 9-12)

9.0 Safety

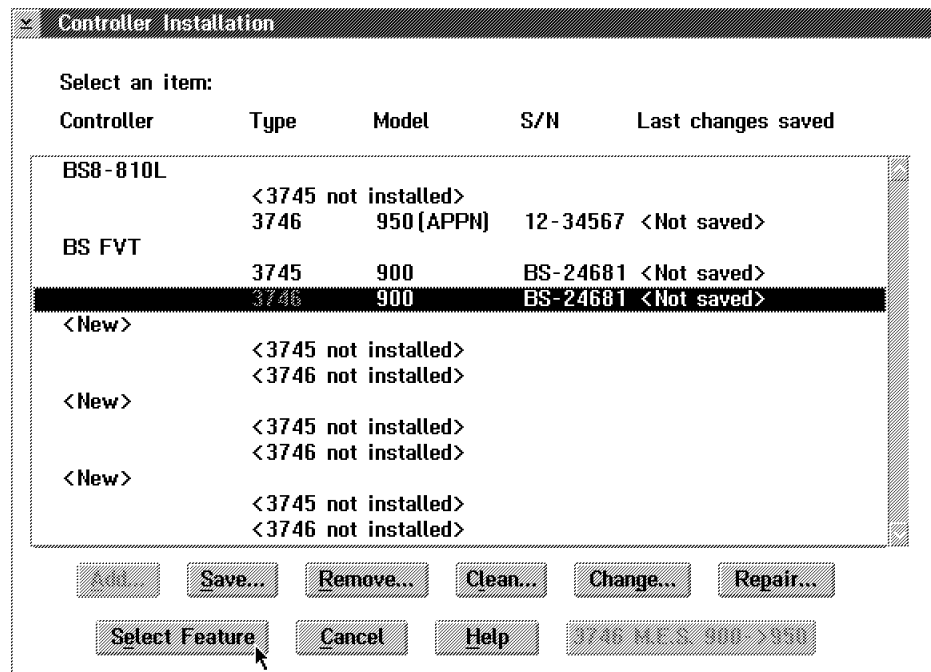
Not applicable.

10.0 Details of Installation.

- Ensure that 3746-9x0 is powered ON and IML'd.
- Ask the Customer to stop the traffic on the 3746-9x0

10.1 Unlocking the MAE Extended Functions.

- 1. If not already logged, enter the **Service Processor Maintenance Password** (Default is IBM3745).
- 2. Double click on the **Service Processor** object icon.
- 3. Click on "**Configuration Management**".
- 4. Double click on "**Manage 3745/3746-9x0 installation/Removal**".
- 5. On the Controller Installation menu: Click on the 3746-950 or the 3746-900NN, on which the feature should be installed, then Click on **Select Feature** button.





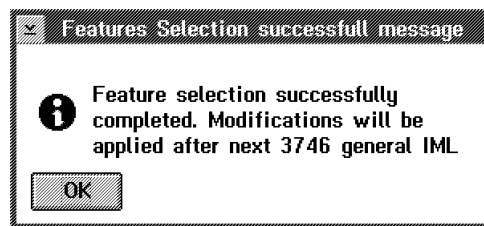
- ___ 6. On the **Features Selection** display:
 - ___ a. Click on the "**MAE 'FC5804/FC5805'**" selection box,
 - ___ b. Enter the corresponding password (The password is recorded on the forms - PN 02L3890), then
 - ___ c. Click on **OK** button.

Features Selection

Select the features/functions you want to install and enter corresponding passwords:

Features	Password	Extended Functions	Password
<input type="checkbox"/> APPN/HPR	no password	<input type="checkbox"/> 3746 [FC.5800]	<input type="text"/>
<input type="checkbox"/> IP	<input type="text"/>	<input type="checkbox"/> MAE [FC.5804/FC.5805]	<input type="text"/>
<input type="checkbox"/> X.25	<input type="text"/>	<input type="checkbox"/> TN3270E Server [FC.5806]	<input type="text"/>
<input type="checkbox"/> ISDN	no password		

- ___ 7. On the **Features selection successful message** display:
 - If an error is reported,
 - Note message and code, click on "**OK**", then
 - Contact your support.
 - If no error is reported, click on **OK**



10.2 Activating the feature installed.

- ___ 1. From the **MOSS-E View** screen, double click on the **Controller 3746-9x0** object icon, on which the feature has been installed.
- ___ 2. Click on **Operation Management**
- ___ 3. Double click on **Perform General IML**



10.2.1 Saving Configuration Parameters on Diskette.

- ___ 1. From the **MOSS-E View** screen, double click on the **Service Processor** object icon.
- ___ 2. Click on "**Operation Management**".
- ___ 3. Double click on **Manage Disks and Databases**.
- ___ 4. Select "**Save databases on diskette**" by clicking on the radio buttons..
- ___ 5. Click on "**OK**" follow the prompts and wait for completion..

If error

1. Note message and code, then
2. Refer to the **Start** page of:
 - the *3746-900 Service Guide*, SY33-2116, if you are working on a **3746-900**, or
 - the *3746-950 Service Guide*, SY33-2108, if you are working on a **3746-950**.

- ___ 6. Click on "**Cancel**" to exit from the function.

10.3 Returning the Machine to the Customer

- ___ 1. Inform the Customer or his representative, that the 3746-9x0 is now ready to support the MAE Extended Functions.
- ___ 2. Tell him that he can start the traffic, then
- ___ 3. Give to him one MAE Extended Functions password sheet copy (Form - PN 02L3890).

11.0 Test Procedures

No test required.

12.0 Field Updating

None.



After Installation (steps 13-15)

13.0 Publications Update

File the second MAE Extended Functions password sheet on the SPIM binder (PN 29H4852).

14.0 Parts Disposition

Not applicable

15.0 Machine Records

- Install the new **MACHINE HISTORY** supplied.
- Report installation and quality problems using existing procedures.

End of instructions.

--	--	--	--	--	--

