

Field Feature Bill of Material

Installation of MAE Extended Functions 2 (FC 5805)
on IBM 3746 Model 9X0 with
Multiaccess Enclosure Feature (FC 3000 or 3001)

Written by: C. Vallee
Checked by: C. Franoux
Approved by: A. Badino
Reviewed by: R. Lympany

3746 FFBM	PN 02L3648 1 of 8	EC F12604 20 APR 1998	EC F52322 09 OCT 1998			
--------------	----------------------	--------------------------	--------------------------	--	--	--

Before Installation (Steps 1-8)

1.0 Machines Affected

IBM 3746 Model 9X0.

This feature should only be applied on the machine serial for which it is specified.

2.0 Related BMs and ECs

2.1 Prerequisites

(Must be installed prior to this installation)

- Microcode Level: EC **F12380C** or higher.
- **FC 5804**, installation instructions PN 02L3508

2.2 Concurrent ECs

(Must be installed together)

None.

2.3 Companion ECs

(May be installed together)

None.

3.0 BMs to be Installed

Feature BM	Feature Name
02L3648	MAE Extended Functions 2 (FC 5805)

4.0 Preparation

1. Familiarize yourself with the purpose and details of the installation instruction before negotiating machine time with the customer.
2. Obtain the Service Processor Maintenance Password from the customer.

3746 FFBM	PN 02L3648 3 of 8	EC F12604 20 APR 1998	EC F52322 09 OCT 1998			
--------------	----------------------	--------------------------	--------------------------	--	--	--

5.0 Programming

None.

6.0 Purpose and Description

Multiaccess Enclosure Extended functions 2 (#5805) provides the following functions:

- HPDT UDP

High Performance Data Transfer (HPDT) MultiPath Channel (MPC+), has been extended to include IP support over the Multiaccess Enclosure ESCON channel.

- HPDT TCP

HPDT TCP/IP extends the efficiencies of HPDT services to IP applications using OS/390 V2R5.

- Enterprise Extender

Enterprise Extender is a simple set of extensions to the APPN High Performance Routing (HPR) technology to integrate SNA into IP backbone networks.

- X.25 scalability of the Multiaccess Enclosure

This extends the current X.25 capacity from a limit of 239 VCs to a limit of 400 PVCs and a limit that is memory dependent for SVCs and capable of supporting more than 1,000 VCs.

- Channelized T1/E1 Support

This support allows the current ISDN PRI adapter to be configured as a channelized T1 or E1 in lieu of using it for ISDN PRI.

- Dial-in support for SDLC PU Type 2 devices

Switched dial in is the capability for SDLC PU Type 2 devices to dial through a switched telephone network.

7.0 Installation Time

FFBM	Machine Hrs.	System Hrs.	Nbr of CEs
02L3648	0.5	0.0	1

8.0 Tools/Material Required

None.

3746 FFBM	PN 02L3648 4 of 8	EC F12604 20 APR 1998	EC F52322 09 OCT 1998			
--------------	----------------------	--------------------------	--------------------------	--	--	--

Installation (Steps 9-12)

9.0 Safety

Not applicable.

10.0 Details of Installation.

10.1 Verify the Level of the Code Installed

Using the SPIM or the Service User's Guide shipped with the service processor, verify that the code installed is at EC **F12380C** or above.

Use the procedure: **Displaying the EC Level of Code installed on the Hard Disk**. If the EC of the code installed is prior to F12380C, use the installation instructions to install the new level of code shipped.

10.2 Verify that FC 5804 is installed

- ___ 1. If not already logged, enter the **Service Processor Maintenance Password** (Default is IBM3745).
- ___ 2. Double click on the **Service Processor** object icon.
- ___ 3. Click on "**Configuration Management**".
- ___ 4. Double click on "**Manage 3745/3746-900 installation/Removal**"

5. On the Controller Installation menu:
Select the 3746-900 on which the feature should be installed by clicking on the **<3746-900>** line, then click on **Select Feature** button.

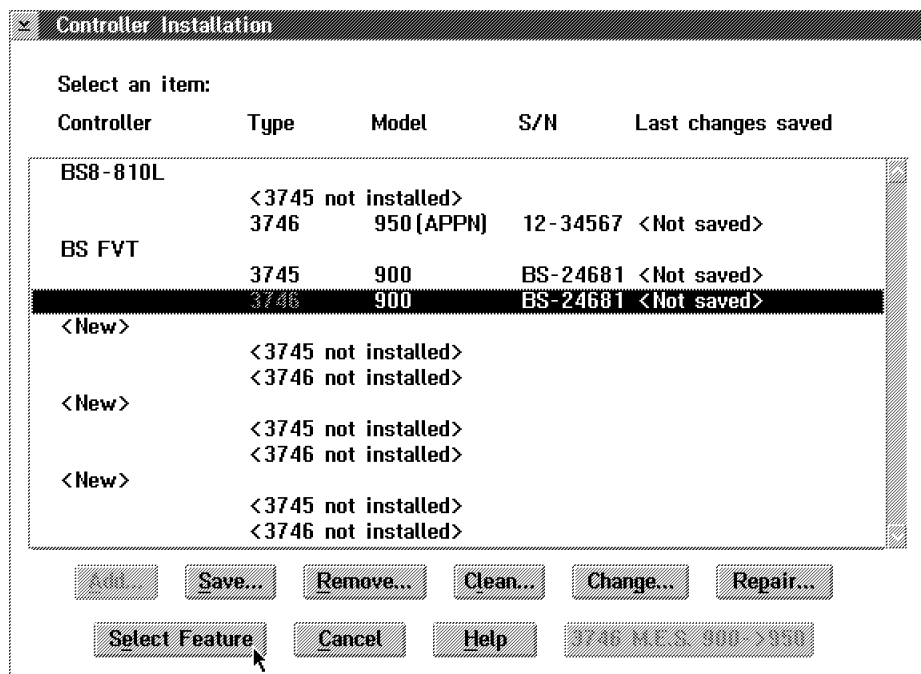


Figure 1. Controller Installation

6. On the **Features Selection** display, verify that **MAE (FC 5804)** is selected.

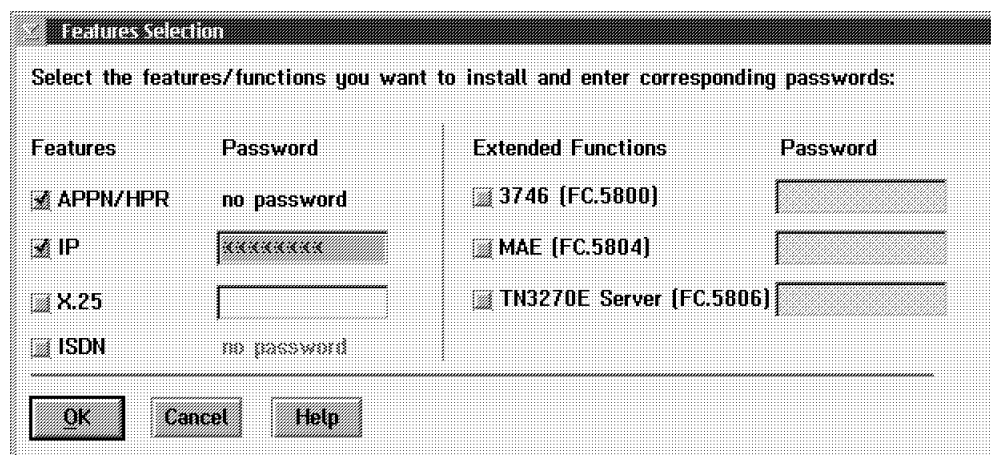


Figure 2. Features Selection

7. Click on **Cancel** to exit.

10.3 Returning the Machine to the Customer

Inform the Customer or his representative, that the 3746-9x0 is now ready to support the MAE Extended Functions 2.

11.0 Test Procedures

No test required.

12.0 Field Updating

None.

After Installation (steps 13-15)

13.0 Publications Update

None

14.0 Parts Disposition

Not applicable

15.0 Machine Records

- Install the new **MACHINE HISTORY** supplied.
- Report installation and quality problems using existing procedures.

End of instructions.