



## Field Feature Bill of Material

### Installation of MAE TN3270E Server (FC 5806) on IBM 3746 Model 9X0 with

### Multiaccess Enclosure Feature 3000

Written by: C. Vallee  
Checked by: C. Franoux  
Approved by: A. Badino  
Reviewed by: B. Kelly



PN 02L3650 2 of 10	EC F12604 20/04/98				
-----------------------	-----------------------	--	--	--	--

## Before Installation (Steps 1-8)

### 1.0 Machines Affected

IBM 3746 Model 9X0.

*This feature should only be applied on the machine serial for which it is specified.*

### 2.0 Related BMs and ECs

#### 2.1 Prerequisites

(Must be installed prior to this installation)

Microcode Level: EC F12380 or higher.

**Checkpoint:** Check that the CSS 1 EC level is F123XX.000.

If level is not present you must upgrade the Service Processor and the 3746-9x0.

**Note:** Refer to **Chapter 3, Displaying the EC Level of Code** in:

- *Service Processor Installation and Maintenance Based on PS/2 9577, SY33-2095, or*
- *Service Processor Installation and Maintenance Based on PS/2 9585, SY33-2109, or*
- *Service Processor Installation and Maintenance Based on 3172, SY33-2111, or*
- *Service Processor Installation and Maintenance (Based on 7585, 3172, 9585, and 9577), SY33-2115.*

#### 2.2 Concurrent ECs

(Must be installed together)

None.

#### 2.3 Companion ECs

(May be installed together)

None.

## 3.0 BMs to be Installed

Feature BM	Feature Name
02L3650	MAE TN3270E Server (FC 5806)

## 4.0 Preparation

1. Familiarize yourself with the purpose and details of the installation instruction before negotiating machine time with the customer.
2. Verify that the 2 password sheets - Form (PN 02L3890) are received and provides the passwords needed to enable the software features.
3. Obtain the Service Processor Maintenance Password from the customer.

## 5.0 Programming

None.

## 6.0 Purpose and Description

To provide the microcode functions, not included in the base Licensed Internal Code (LIC) of the 3746-9x0.

- Interactive Network NetDispatcher
- RIP V2
- Enhanced ATM adapters: LIC294, LIC295
- Native HPR over ATM
- Branch Extender
- Other enhancements in the area of :
  - ATM
  - WAN (Frame Relay, PPP, ISDN)
  - APPN/HPR, DLSw and IP

## 7.0 Installation Time

FFBM	Machine Hrs.	System Hrs.	Nbr of CEs
02L3650	0.5	0.0	1

## 8.0 Tools/Material Required

None.



## Installation (Steps 9-12)

### 9.0 Safety

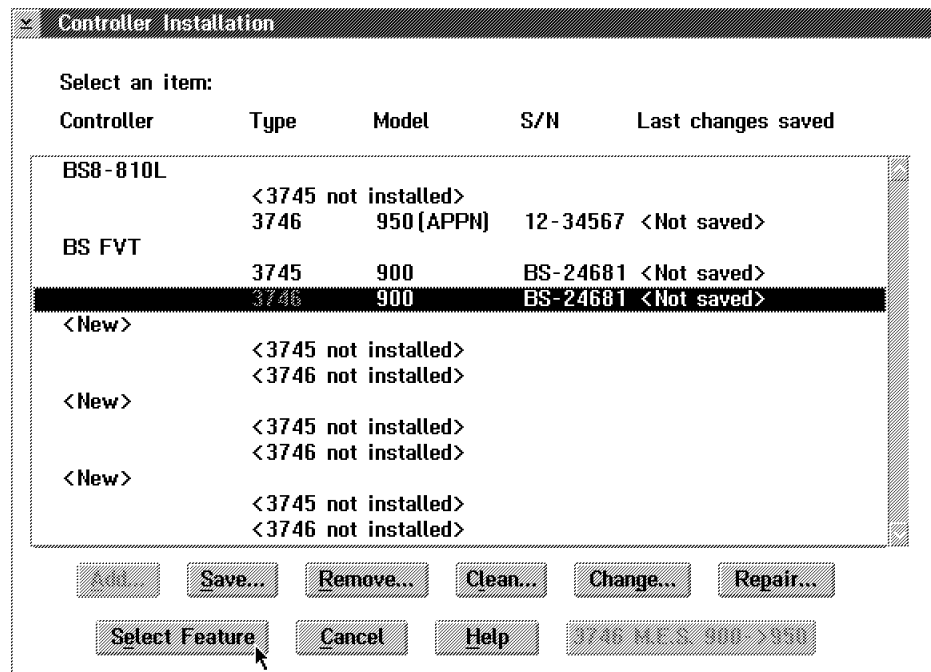
Not applicable.

### 10.0 Details of Installation.

- Ensure that 3746-9x0 is powered ON and IML'd.
- Ask the Customer to stop the traffic on the 3746-9x0

#### 10.1 Unlocking the MAE Extended Functions.

- 1. If not already logged, enter the **Service Processor Maintenance Password** (Default is IBM3745).
- 2. Double click on the **Service Processor** object icon.
- 3. Click on "**Configuration Management**".
- 4. Double click on "**Manage 3745/3746-9x0 installation/Removal**".
- 5. On the Controller Installation menu: Click on the 3746-950 or the 3746-900NN, on which the feature should be installed, then Click on **Select Feature** button.



- \_\_\_ 6. On the **Features Selection** display:
  - \_\_\_ a. Click on the "**MAE TN3270E Server**" selection box,
  - \_\_\_ b. Enter the corresponding password (The password is recorded on the forms - PN 02L3890), then
  - \_\_\_ c. Click on **OK** button.

Features	Password	Extended Functions	Password
<input type="checkbox"/> APPN/HPR	no password	<input type="checkbox"/> 3746 [FC.5800]	
<input type="checkbox"/> IP		<input type="checkbox"/> MAE [FC.5804/FC.5805]	
<input type="checkbox"/> X.25		<input type="checkbox"/> TN3270E Server [FC.5806]	
<input type="checkbox"/> ISDN	no password		

Buttons: OK, Cancel, Help

- \_\_\_ 7. On the **Features selection successful message** display:
  - If an error is reported,
    - Note message and code, click on "**OK**", then
    - Contact your support.
  - If no error is reported, click on **OK**

Feature selection successfully completed. Modifications will be applied after next 3746 general IML.

Buttons: OK

## 10.2 Activating the feature installed.

- \_\_\_ 1. From the **MOSS-E View** screen, double click on the **Controller 3746-9x0** object icon, on which the feature has been installed.
- \_\_\_ 2. Click on **Operation Management**
- \_\_\_ 3. Double click on **Perform General IML**
- \_\_\_ 4. Click on **Yes** twice to execute the IML with diags.
- \_\_\_ 5. Click on **OK**



## 10.2.1 Saving Configuration Parameters on Diskette.

- \_\_\_ 1. From the **MOSS-E View** screen, double click on the **Service Processor** object icon.
- \_\_\_ 2. Click on "**Operation Management**".
- \_\_\_ 3. Double click on **Manage Disks and Databases**.
- \_\_\_ 4. Select "**Save databases on diskette**" by clicking on the radio buttons..
- \_\_\_ 5. Click on "**OK**" follow the prompts and wait for completion..

**If error**

- 1. Note message and code, then
- 2. Refer to the **Start** page of:
  - the *3746-900 Service Guide*, SY33-2116, if you are working on a **3746-900**, or
  - the *3746-950 Service Guide*, SY33-2108, if you are working on a **3746-950**.

- \_\_\_ 6. Click on "**Cancel**" to exit from the function.

## 10.3 Returning the Machine to the Customer

- \_\_\_ 1. Inform the Customer or his representative, that the 3746-9x0 is now ready to support the MAE Extended Functions.
- \_\_\_ 2. Tell him that he can start the traffic, then
- \_\_\_ 3. Give to him one MAE Extended Functions password sheet copy (Form - PN 02L3890).

## 11.0 Test Procedures

No test required.

## 12.0 Field Updating

None.





---

## After Installation (steps 13-15)

### 13.0 Publications Update

File the second MAE Extended Functions password sheet on the SPIM binder (PN 29H4852).

### 14.0 Parts Disposition

Not applicable

### 15.0 Machine Records

- Install the new **MACHINE HISTORY** supplied.
- Report installation and quality problems using existing procedures.

**End of instructions.**

