



## Field Feature Bill of Material

**PN 02L3676**

**Install a backup Network Node Control Point (NNP-B)  
Feature Code 5122**

**on IBM 3746-9X0.**

Written by: J. Michaut  
Illustration by: S. Vaccaro  
Checked by: C. Franoux  
Approved by: A. Badino  
Reviewed by: A. Bowen

3746 FFBM	PN 02L3676 1 of 18	EC F12391A 28 Jan 98				
--------------	-----------------------	-------------------------	--	--	--	--



PN 02L3676 2 of 18	EC F12391A 28 Jan 98				
-----------------------	-------------------------	--	--	--	--

## Before Installation (Steps 1-8)

### 1.0 Machines Affected

#### 3746 Model 9X0

*This feature should only be applied on the machine serial number for which it is specified.*

### 2.0 Related BMs and ECs

#### 2.1 Prerequisites

(Must be installed prior to this installation)

##### Feature or EC

##### Title

**5022** Network Node Control Point - A (B/M 29H4169), or

**5122** Network Node Control Point - A (B/M 08J5495 or 02L3674)

**D46130** Microcode (Minimum Level)

**Checkpoint:** Check that the CSS 1 EC Level is D46130.000 or higher.

**Note:** Refer to *SPIM*, Chapter 3. *Displaying the EC Level of the Code*.

#### 2.2 Concurrent ECs

(Must be installed together)

None.

#### 2.3 Companion ECs

(May be installed together)

None.

### 3.0 BMs to be Installed

##### FFBM

##### Title

**02L3674** Network Node Processor B (NNP-B) (FC 5122)



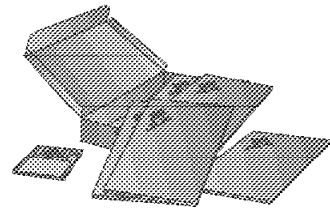
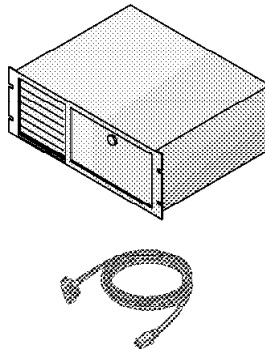
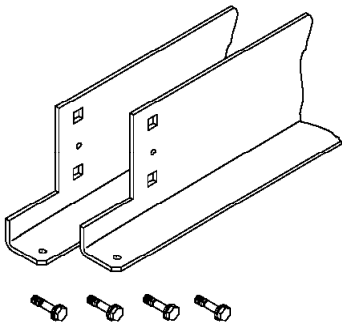
## 4.0 Preparation

- Familiarize yourself with the purpose and details of the installation instruction before negotiating machine time with the customer.
- Check all items listed on the BM(s) to determine that all parts have been received.

- Brackets (X2)  
and Screws (X4)

- NNP-B and Power  
Cord

- Publications and diskette



- Obtain the Parameter worksheet "**Definition of Service LAN IP Addresses**" filled in by the customer

**Note:** This parameter worksheet is part of *IBM 3746 Models 900 and 950 Migration and Planning Guide*, GA33-0349.

- The set up of the NNP-B has no impact on customer operations.
- Ask the customer:
  - For the maintenance password.
  - To logoff the Service Processor (SP), if not already done.
- Get the Network Node Installation diskette.

## 5.0 Programming

None.



## 6.0 Purpose and Description

### 6.1 Purpose

To increase reliability of 3746-9X0 by adding a backup Network Node Processor.

### 6.2 Description

The installation of the NNP-B is divided into two main procedures:

1. Installing the system unit
2. Installing the code on the NNP-B processor.

## 7.0 Installation Time

FFBM	Machine Hrs.	System Hrs.	Nbr of CEs
02L3676	0.2	0.0	1

## 8.0 Tools/Material Required

None.

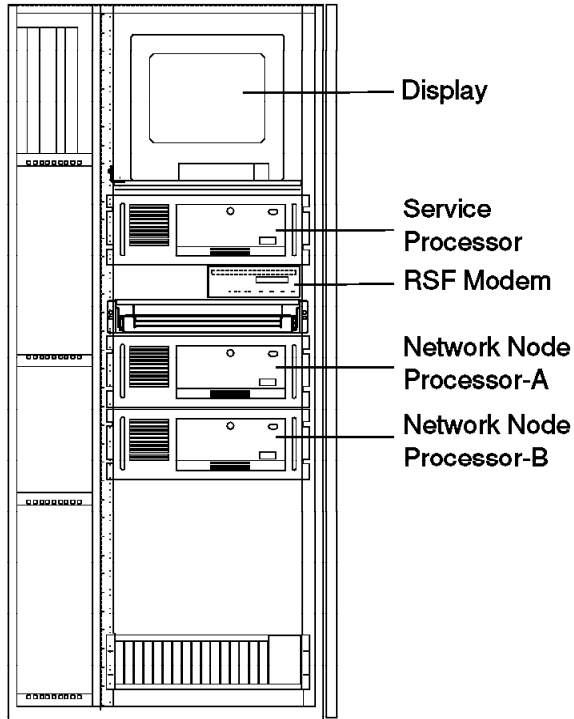


Figure 1. NNP-B installed with SP 7585.

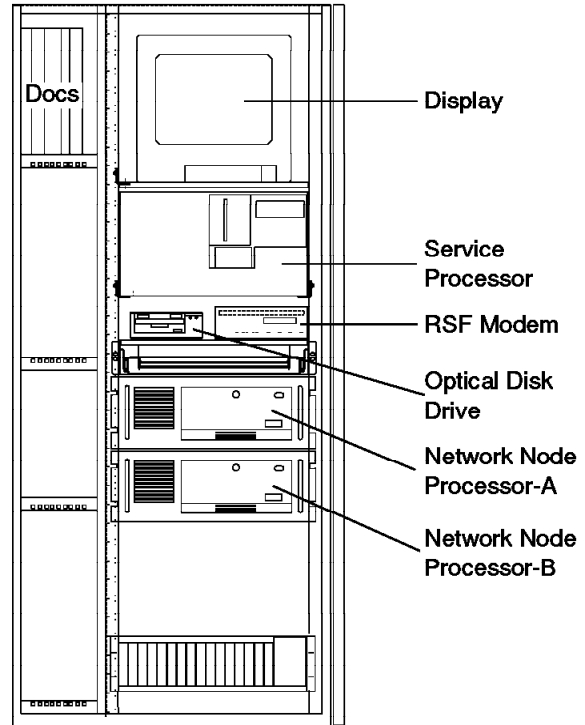


Figure 3. NNP-B installed with SP 3172.

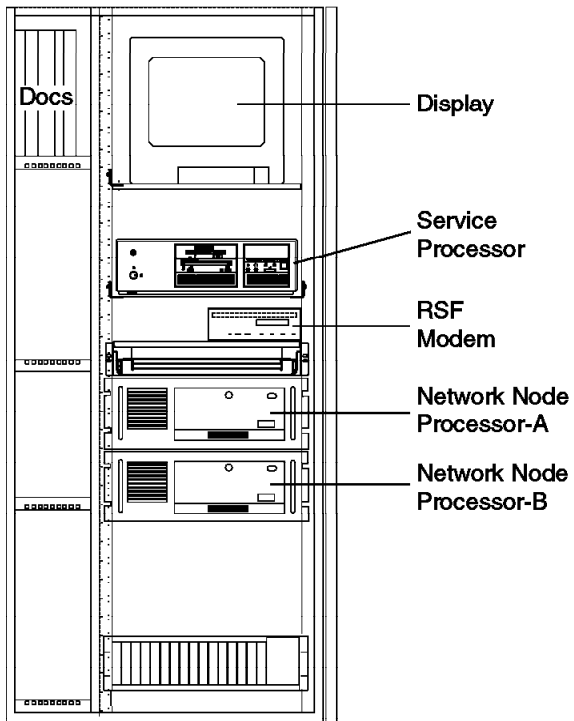


Figure 2. NNP-B installed with SP 9577.

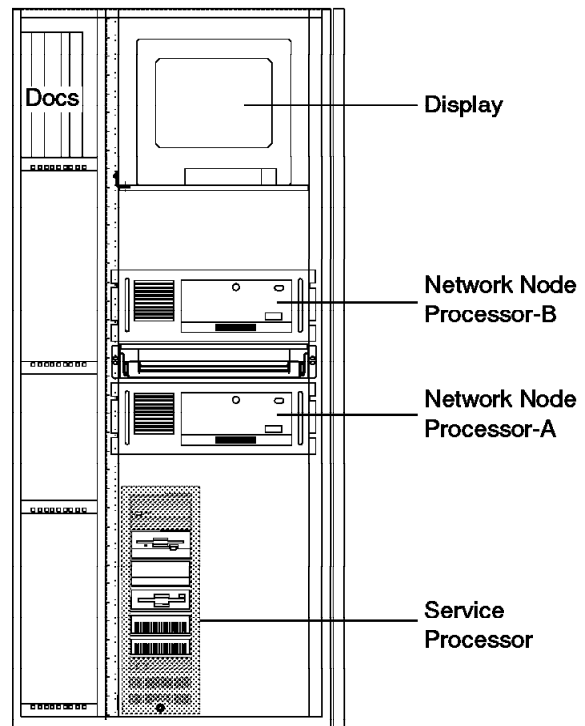


Figure 4. NNP-B installed with SP 9585.

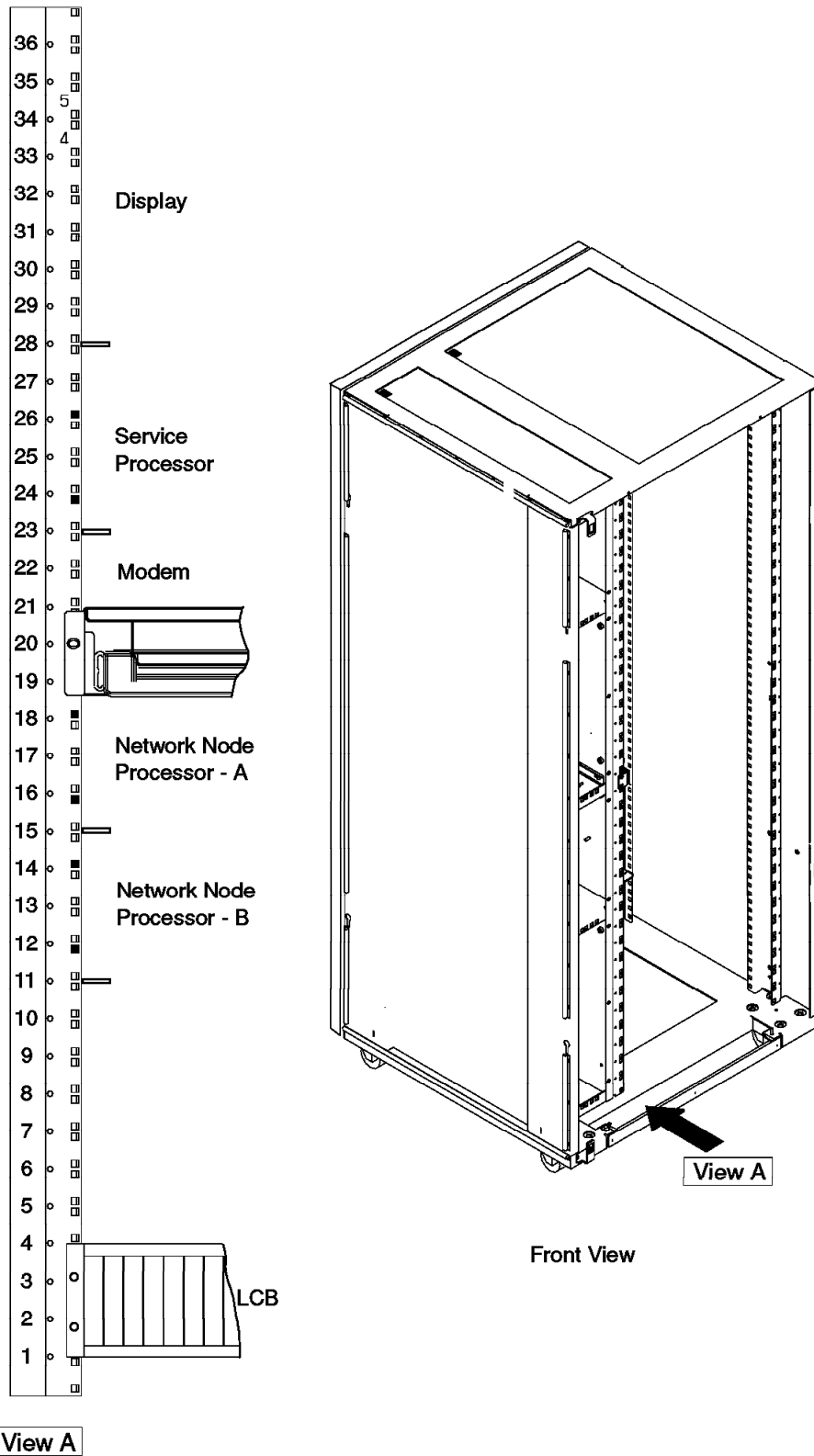


Figure 5. Installing Brackets for Processor Type 7585

3746 FFBM	PN 02L3676 7 of 18	EC F12391A 28 Jan 98				
--------------	-----------------------	-------------------------	--	--	--	--



## Installation (Steps 9-12)

### 9.0 Safety

Review the **Safety Notices** and the **Safety Inspection Procedures** located at the beginning of the *IBM 3745 Communication Controller All Models, IBM 3746 Expansion Unit Model 900, IBM 3746 Nways Multiprotocol Controller Model 950 Safety Information, GA33-0400*.

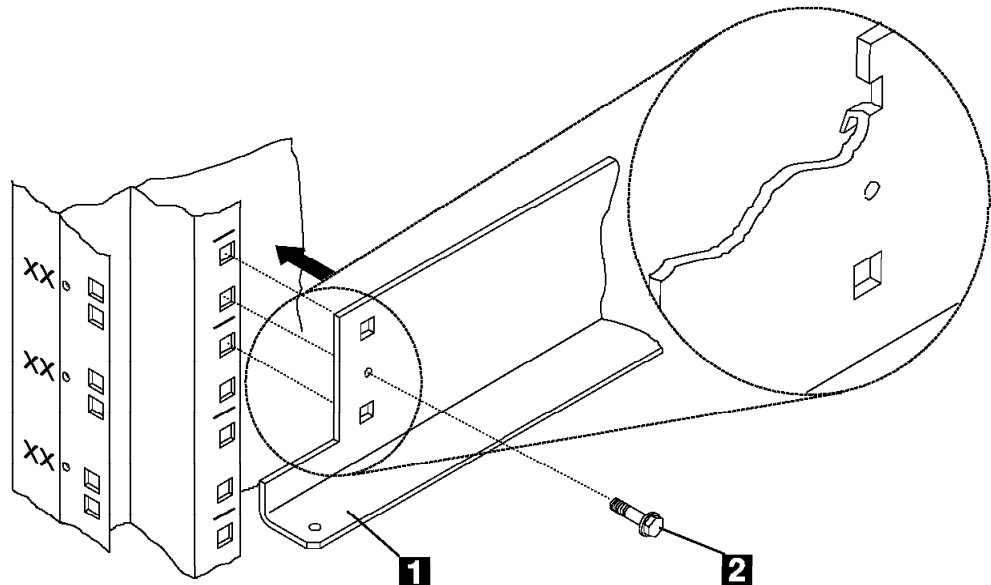
### 10.0 Details of Installation.

#### 10.1 Installing the System Unit

**Note:** The NNP-B can be installed at different location in the Controller Expansion, depending on the type of Service Processor already installed. Refer to Figure 1 on page 6 to Figure 4 on page 6 to determine with your Customer where the NNP-B should be installed.

- \_\_\_ 1. Open the front and rear doors of the controller expansion.
- \_\_\_ 2. Locate NNP-B position in the Controller Expansion
- \_\_\_ 3. Install right and left brackets p/n 58G5752 **1** on the rack.

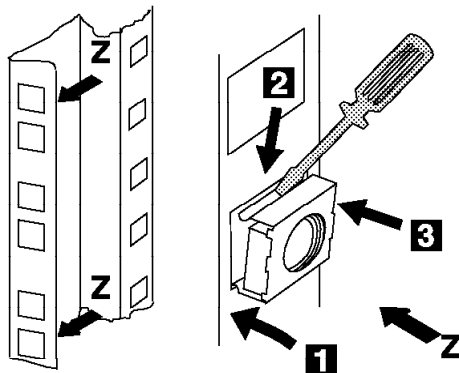
**Note:** If Service Processor type 9585, remove the right and left brackets in slots 22, before installing the new brackets. Then, tighten using the four screws p/n 2665527 **2**.



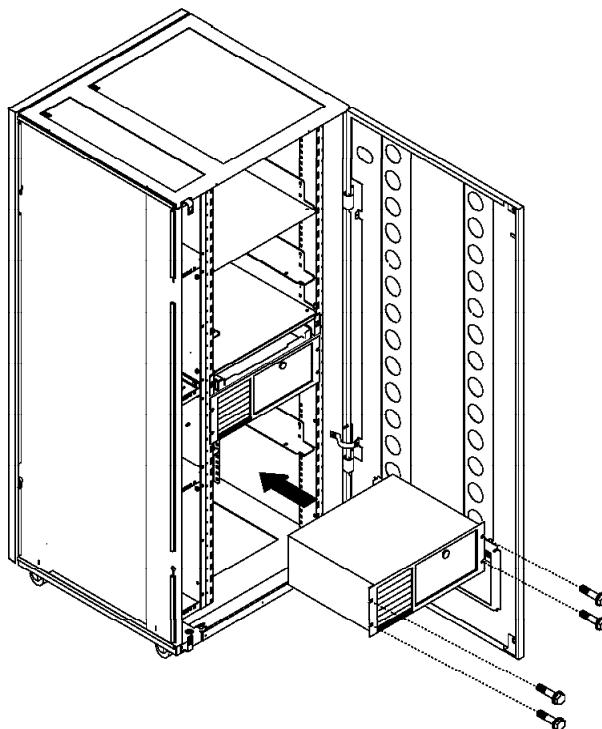




- 4. Install four captive nuts (PN 58G5766) on the left and right side of the controller expansion.

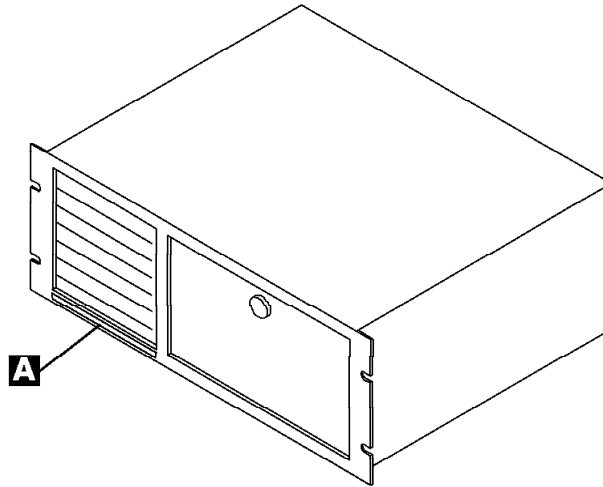


- 5. Slide the network node processor unit in the controller expansion from the front side, then fasten the unit using four screws (PN 1621230).



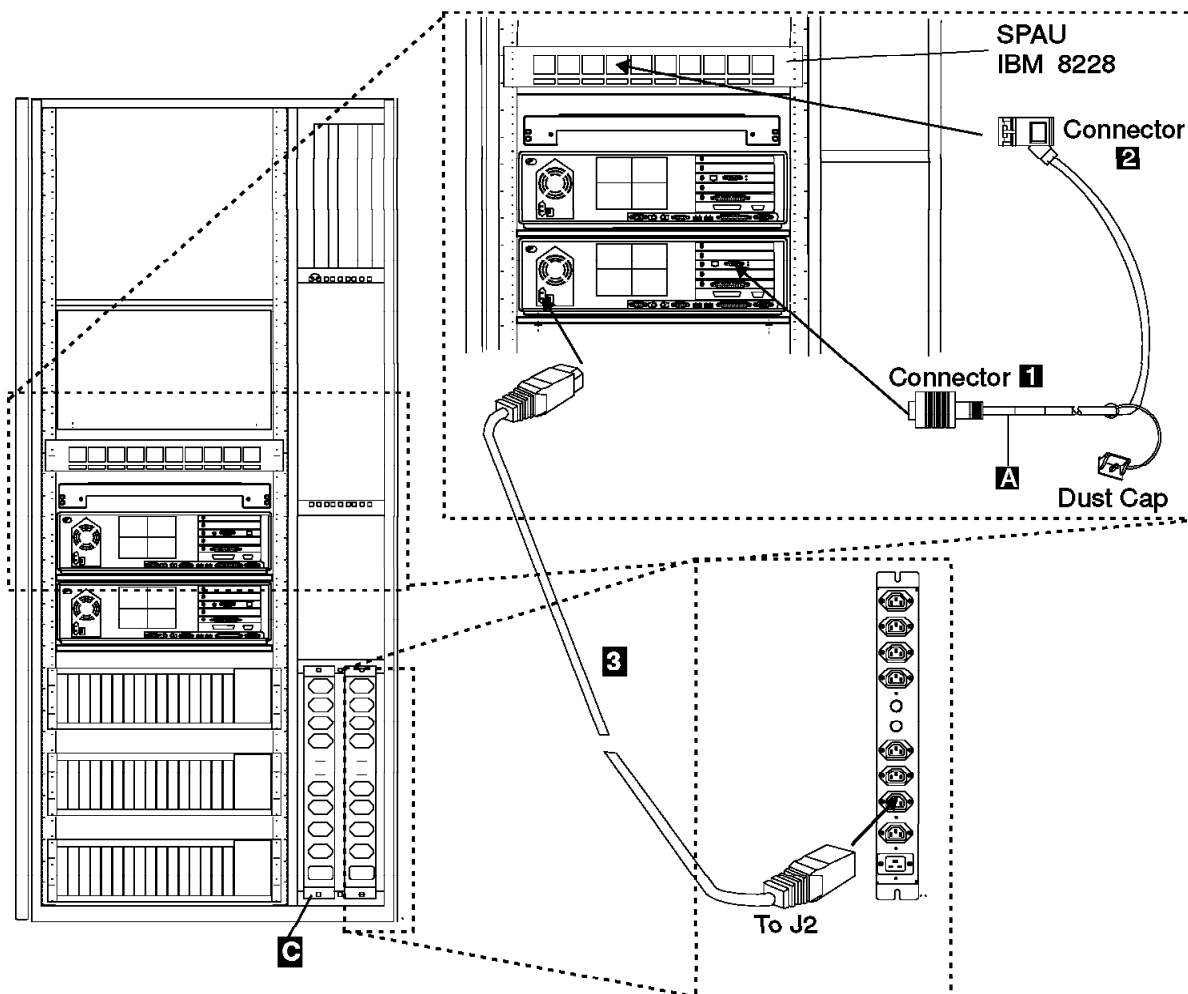


- \_\_\_ 6. Using label (PN 0792966), **identify** your Network Node Processor-B by sticking the appropriate label **A** on the front and rear side of the unit.



## 10.2 Connecting the NNP-B.

- 1. Plug connector **1** of cable **A** (PN 6339098) (see figure below) to the token-ring card connector.
- 2. Using a sticker, identify the cable **A** as the "NNP-B cable" and plug connector **2** to **any** plug of the SPAU IBM 8228 from **1 to 8**
- 3. Connect the power cord **3** (PN 58G5783) to the NNP-B ac inlet and to J5 of the ac outlet distribution box.



### On the NNP-B Front Side:

- 4. Open the access door, then press the Power button to **Switch ON** the processor.

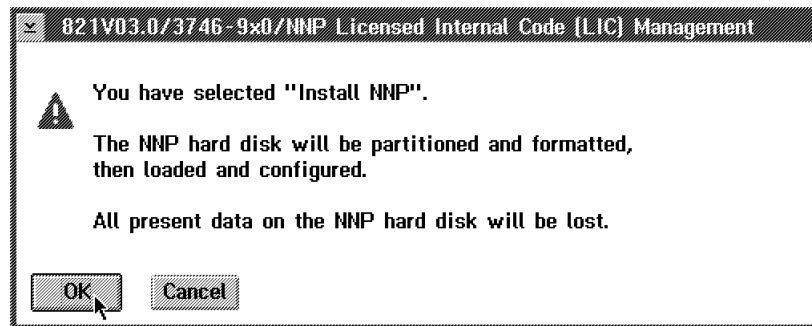
**Note:** For any unexpected message or error concerning the NNP-B, go to **Chapter 3. Network Node Processor Problem Determination** of the *Network Node Processor Installation and Maintenance Manual*. SY33-2111.



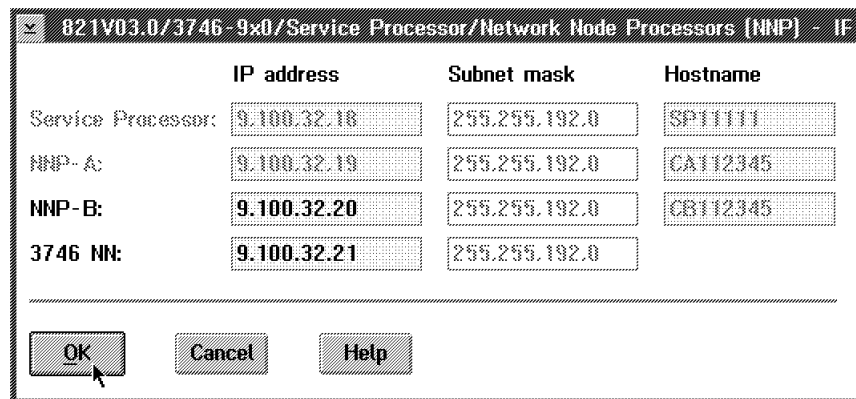
## 10.3 Installing the Code on the NNP-B.

On the Service Processor:

- \_\_\_ 1. On **MOSS-E View** window, click on **Program**.
- \_\_\_ 2. Click on **LOG ON MOSS-E**.
- \_\_\_ 3. Enter the maintenance password, press **Enter**.
- \_\_\_ 4. Double click on the 3746-900 or 3746-950 icon where you are going to install the NNP-B (NNP-A already installed).
- \_\_\_ 5. From the 3746-9x0 menu, click on **Network Node Processor (NNP) Management**.
- \_\_\_ 6. Double click on **(M) Install/Remove/Change/Restore LIC/NNP**.
- \_\_\_ 7. Click on **NNP-B** radio button, then click on **Install NNP** button.
- \_\_\_ 8. Click on **OK** button.

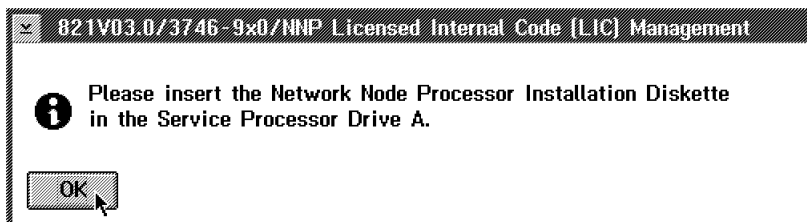


- \_\_\_ 9. Modify the **IP address**, the **Subnet mask** for the NNP-B and the **IP address** of the **3746NN** according to the values recorded by the customer on the parameter worksheet. Otherwise keep the default values and record the hostnames for later use. Then click on **OK** button.

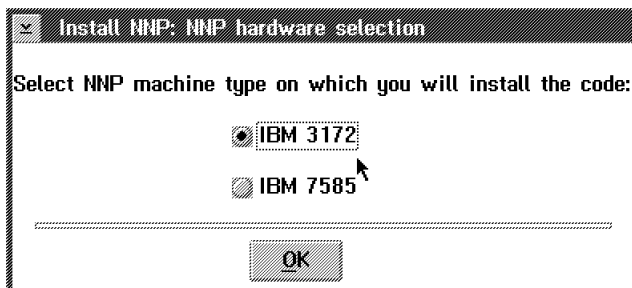




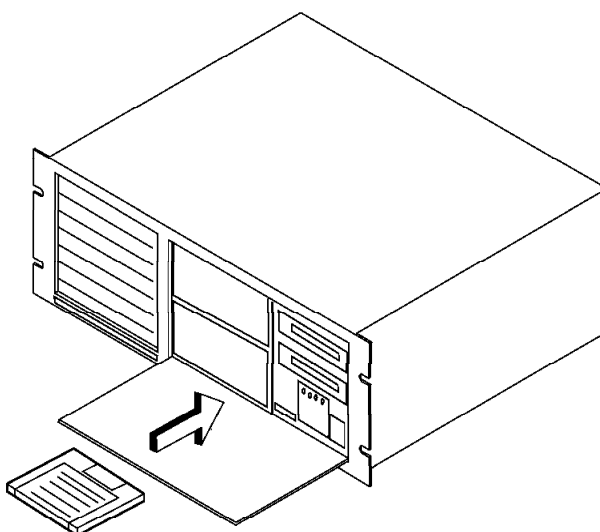
- \_\_\_ 10. Insert the **Network Node Processor installation diskette** in the diskette drive of the **Service Processor**. Then, click **OK** button.



- \_\_\_ 11. Click on the **IBM 7585** radio button, click **OK** button.



- \_\_\_ 12. When the process is completed, power OFF the Network Node Processor B.
- \_\_\_ 13. Remove the NNP Installation Diskette from the **Service Processor** and insert it in the **Network Node Processor-B** drive A.



- \_\_\_ 14. Power ON the Network Node Processor B.
- \_\_\_ 15. Then click on **OK** button.



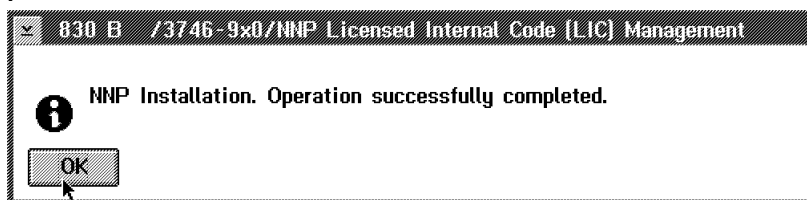
- \_\_\_ 16. To follow the progress of the installation, read the messages prompted in '**Messages**' box.

**Note:** It takes about 30 minutes to complete the installation

- \_\_\_ 17. As indicated in the following information message, remove the NNP-B installation diskette, then click on **OK** button.



- \_\_\_ 18. On message screen **NNP Installation. Operation successfully is completed.**, click on **OK** button.



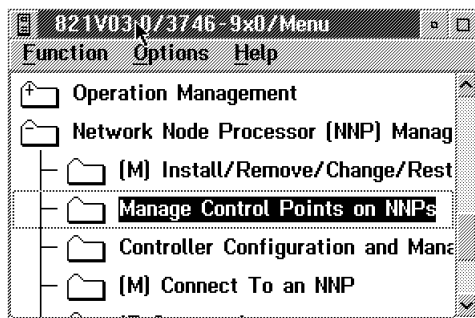
- \_\_\_ 19. Click on **Close** button.

## 10.4 Enabling the NNP Back-up Function

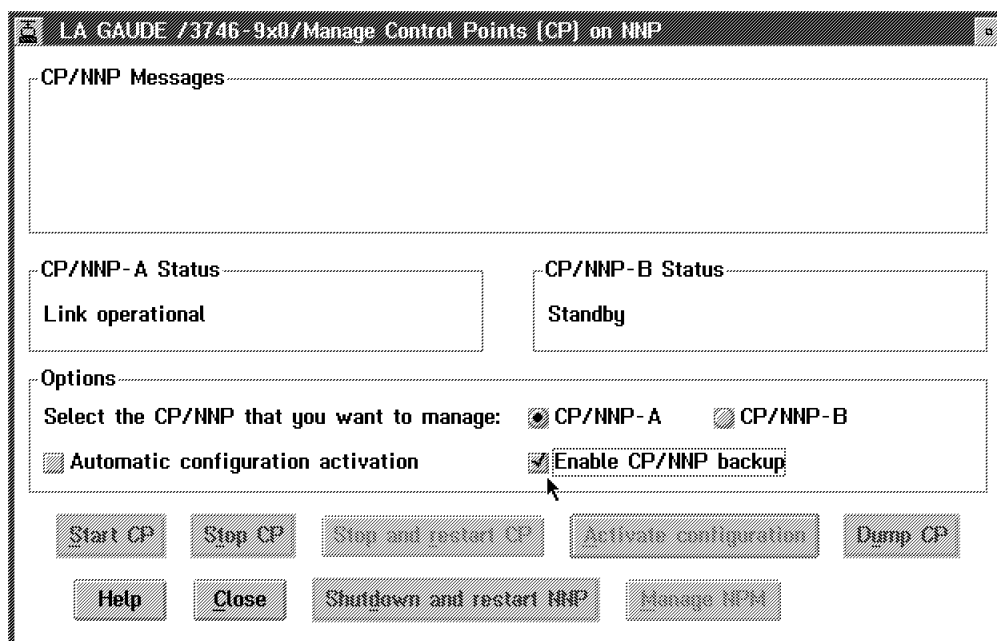
### Important

It's a customer task. But ask the customer if you should perform this task.

1. On the **3746-9X0** main menu, Click on **Network Node Processor Management**.
2. Double click on **Manage Control Point on NNPs**.



3. Click on **Enable the CP/NNP back-up**.



**Note:** For details refer to chapter **Working with the NNP Functions** on the *3746-950 User's Guide*, SA33-0356, or the *3745-17A to 61A and 3746-900 Basic Operation Guide*, SA33-0177.



## 10.5 Returning the 3746-9x0 to the Customer.

- \_\_\_ 1. On the **3746-9x0 Menu** window, click on **Function**, then, click on **Exit**.
- \_\_\_ 2. On the **MOSS-E View** window, click on **Program**.
- \_\_\_ 3. Click on **LOG OFF MOSS-E**.
- \_\_\_ 4. Close the front and rear doors of the controller expansion.

## 11.0 Test Procedures

No test required.

## 12.0 Field Updating

None.



---

## After Installation (steps 13-15)

### 13.0 Publications Update

None.

### 14.0 Parts Disposition

#### 14.1 Purchased Machines

Refer to the parts ownership matrix to determine the correct owner of removed/unused parts.

- For EMEA/APG/AG Areas, refer to *Hardware and General Service Code Description*.
- For Domestic Areas, return parts to the customer.

### 15.0 Machine Records

- Install the new **MACHINE HISTORY** supplied.
- Report installation and quality problems using existing procedures.

**End of instructions.**



--	--	--	--