

Field Feature Bill of Material

PN 08J5497

**Install a backup Network Node Control Point (NNP-B)
on IBM 3746-9X0.
(FC 5122)**

Written by: J. Michaut
Illustration by: S. Vaccaro
Checked by: M. Dallier
Approved by: A. Badino
Reviewed by: B. Kelly

Before Installation (Steps 1-8)

1.0 Machines Affected

3746 Model 9X0

This feature should only be applied on the machine serial for which it is specified.

2.0 Related BMs and ECs

2.1 Prerequisites

(Must be installed prior to this installation)

Feature

or EC

Title

5022

Network Node Control Point - A FB/M 29H4169, or

5122

Network Node Control Point - A FB/M 08J5495.

D46130

Microcode (Minimum Level)

Checkpoint: Check that the CSS 1 EC Level is D46130.000 or higher.

Note: Refer to *SPIM*, Chapter 3. *Displaying the EC Level of the Code*.

2.2 Concurrent ECs

(Must be installed together)

None.

2.3 Companion ECs

(May be installed together)

None.

3.0 BMs to be Installed

FFBM

Title

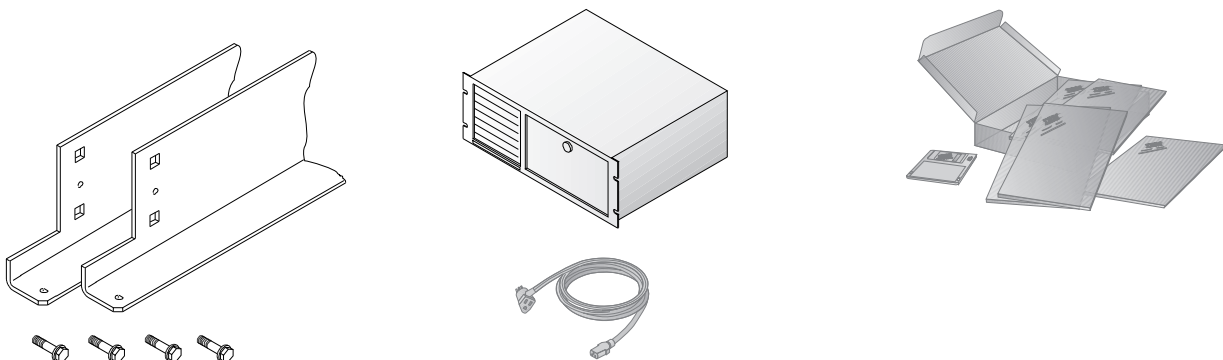
08J5497

Network Node Processor B (NNP-B) (FC 5122)

4.0 Preparation

- Familiarize yourself with the purpose and details of the installation instruction before negotiating machine time with the customer.
- Check all items listed on the BM(s) to determine that all parts have been received.

- ☐ Brackets (X2) and Screws (X4)
- ☐ NNP-B and Power Cord
- ☐ Publications and diskette



- Obtain the Parameter worksheet "**Definition of Service LAN IP Addresses**" filled in by the customer

Note: This parameter worksheet is part of *IBM 3746 Models 900 and 950 Migration and Planning Guide*, GA33-0349.

- The set up of the NNP-B has no impact on customer operations.
- Ask the customer:
 - For the maintenance password.
 - To logoff the Service Processor (SP), if not already done.
- Get the Network Node Installation diskette.

5.0 Programming

None.

6.0 Purpose and Description

To increase reliability of 3746-9X0 by adding backup Network Node Processor.

The installation of the NNP-B is divided into two main procedures:

1. Installing the system unit
2. Installing the code on the NNP-B processor.

7.0 Installation Time

| FFBM | Machine Hrs. | System Hrs. | Nbr of CEs |
|---------|--------------|-------------|------------|
| 08J5497 | 0.0 | 0.0 | 1 |

8.0 Tools/Material Required

None.

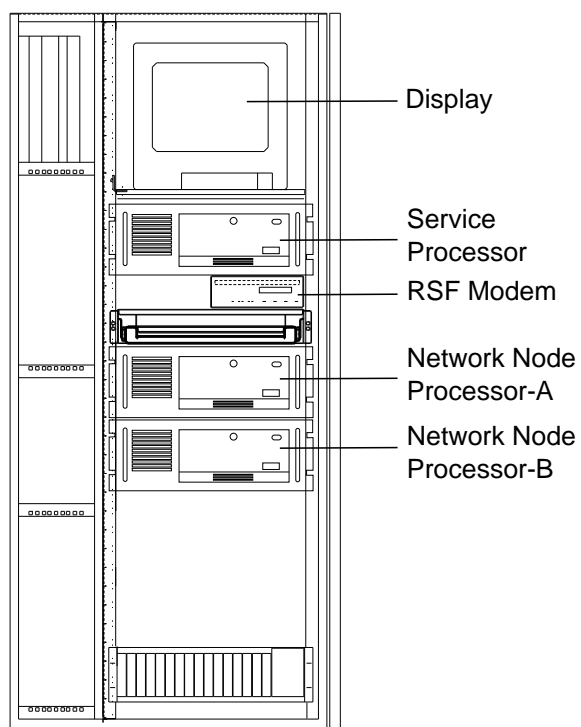


Figure 1. NNP-B installed with SP 7585.

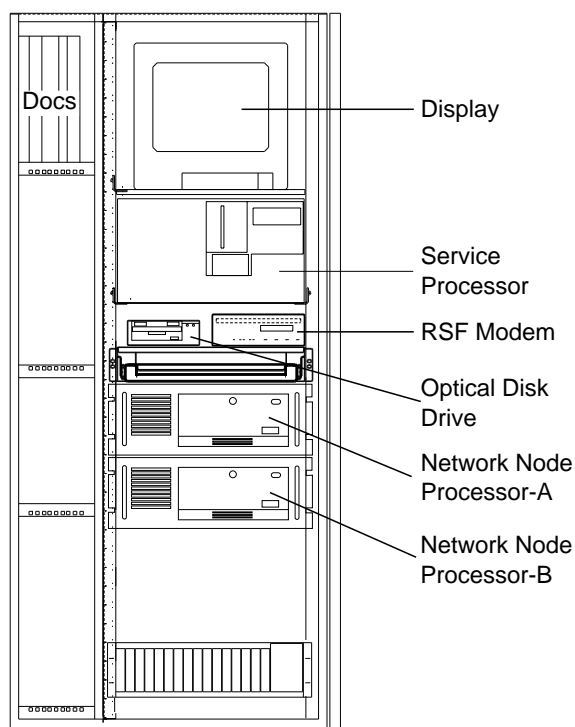


Figure 3. NNP-B installed with SP 3172.

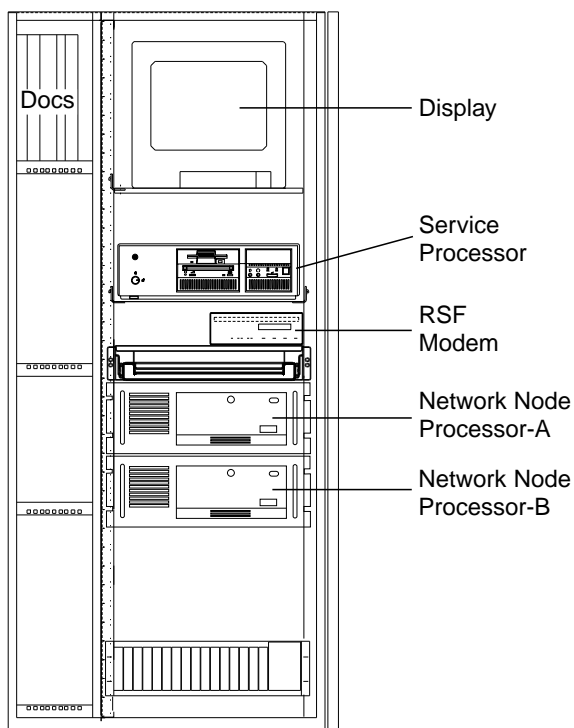


Figure 2. NNP-B installed with SP 9577.

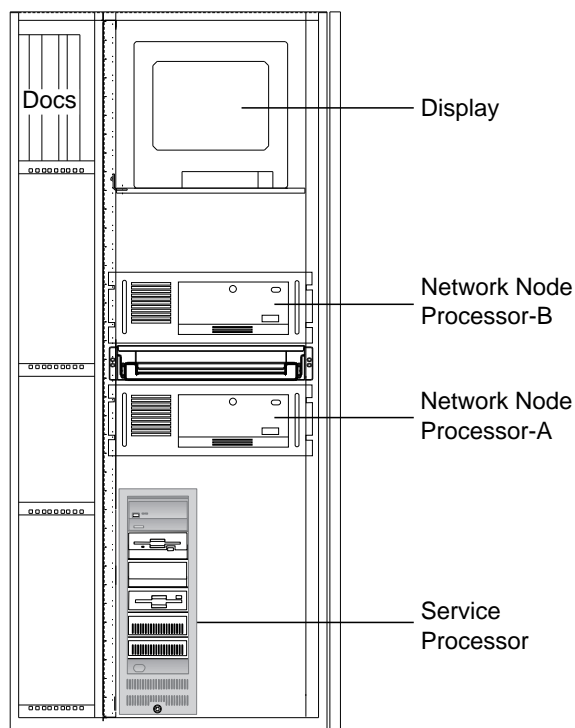


Figure 4. NNP-B installed with SP 9585.

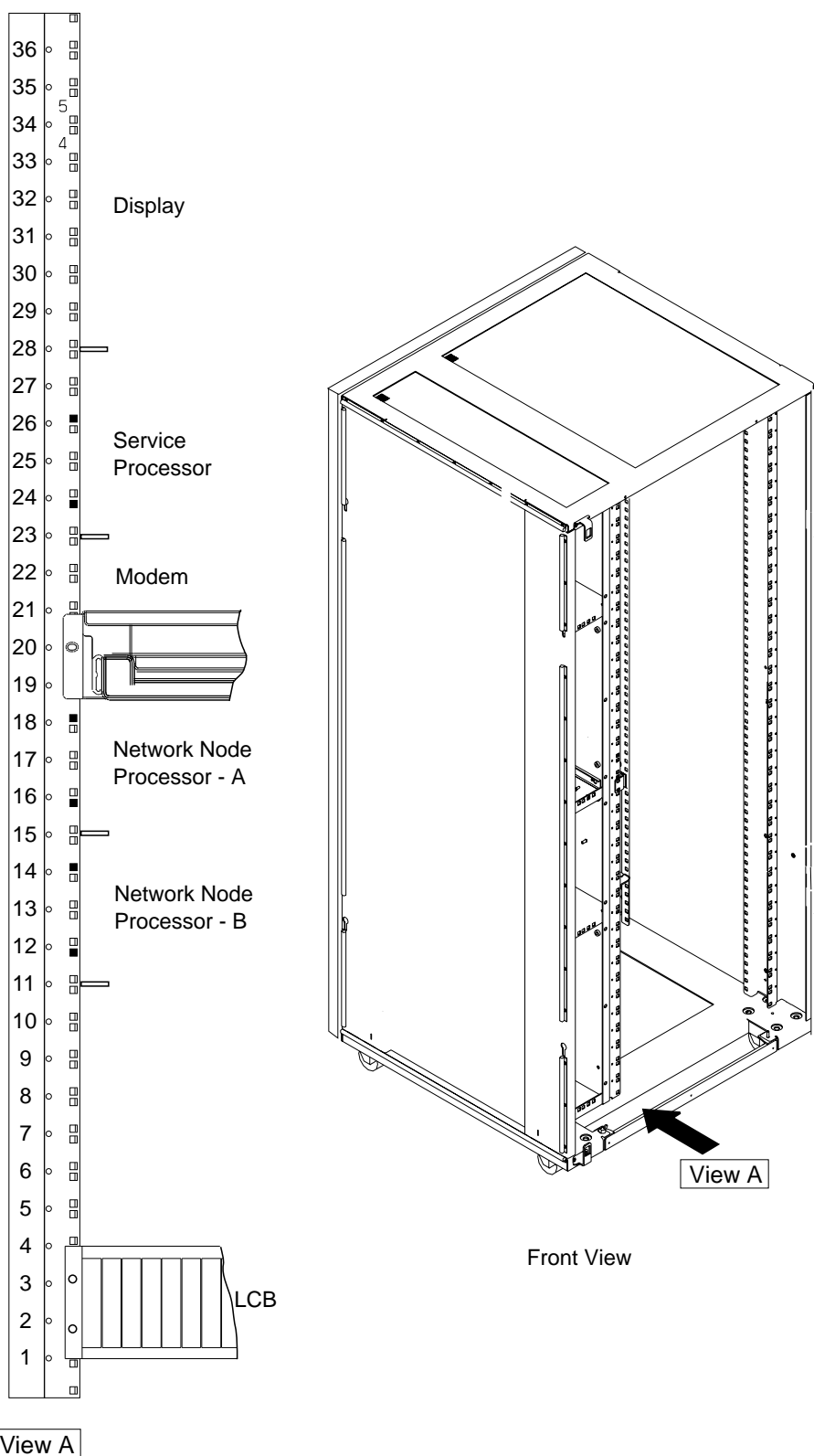


Figure 5. Installing Brackets for Processor Type 7585

| | | | | | | |
|--------------|-----------------------|-------------------------|--|--|--|--|
| 3746 FFBM | PN 08J5497 7 of 20 | EC E46545A 07 MAY 97 | | | | |
|--------------|-----------------------|-------------------------|--|--|--|--|

Installation (Steps 9-12)

9.0 Safety

Review the **Safety Notices** and the **Safety Inspection Procedures** located at the beginning of the *IBM 3745 Communication Controller All Models, IBM 3746 Expansion Unit Model 900, IBM 3746 Nways Multinetwork Controller Model 950 Safety Information*, GA33-0400.

10.0 Details of Installation.

10.1 Installing the NNP-B.

Note: The NNP-B can be installed at different location in the Controller Expansion, depending on the type of Service Processor already installed. Refer to Figure 1 on page 6 to Figure 4 on page 6 to determine with your Customer where the NNP-B should be installed.

- ___ 1. Open the front and rear doors of the controller expansion.
- ___ 2. Locate NNP-B position in the Controller Expansion
- ___ 3. Install right and left brackets p/n 58G5752 **1** on the rack.

Note: If Service Processor type 9585, remove the right and left brackets in slots 22, before installing the new brackets.

- ___ 4. Tighten using the four screws p/n 2665527 **2** (see Figure 6 on page 9)

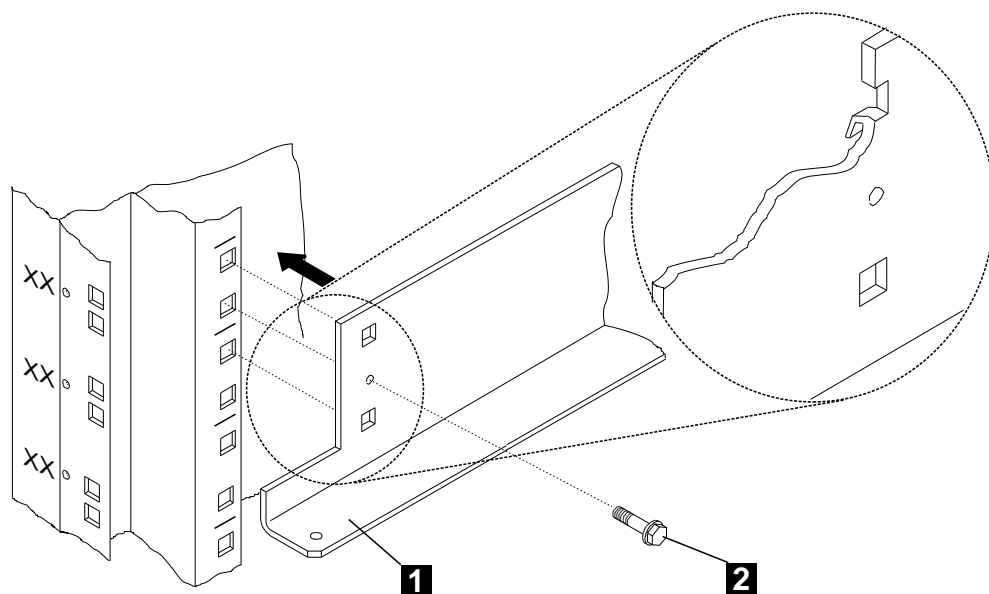


Figure 6. Installing the Network Node Processor B Brackets

- 5. Install four captive nuts (PN 58G5766) on the left and right side of the controller expansion.

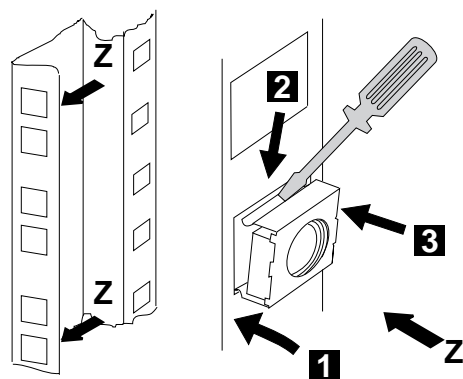


Figure 7. Installing the Captive Nuts.

- 6. Slide the network node processor unit in the controller expansion from the front side, then fasten the unit using four screws (PN 1621230).

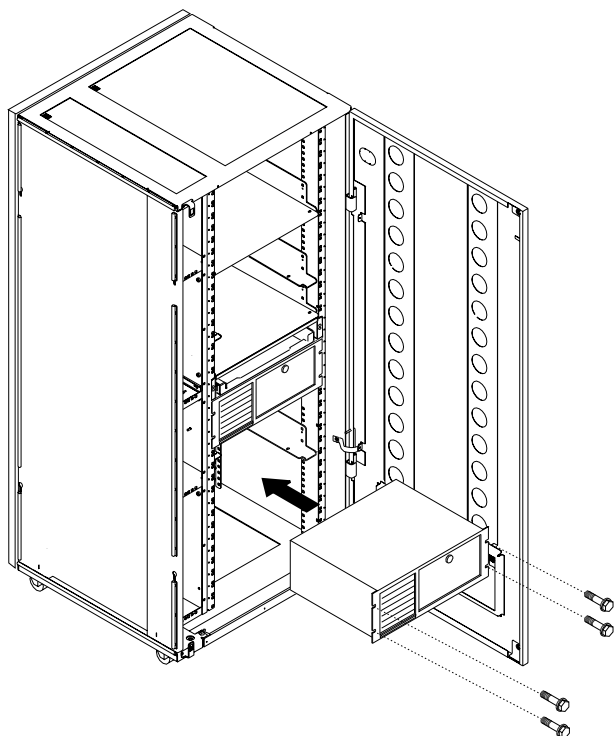


Figure 8. Installing the NNP-B.. (Front Side)

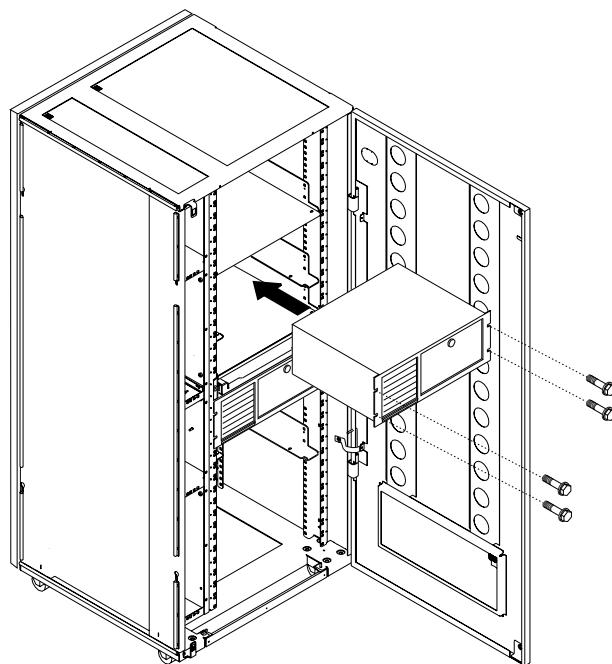


Figure 9. Installing the NNP-B.. (Front Side)

- 7. Using label (PN 0792966), **identify** your Network Node Processor-B by sticking the appropriate label **A** on the front and rear side of the unit.

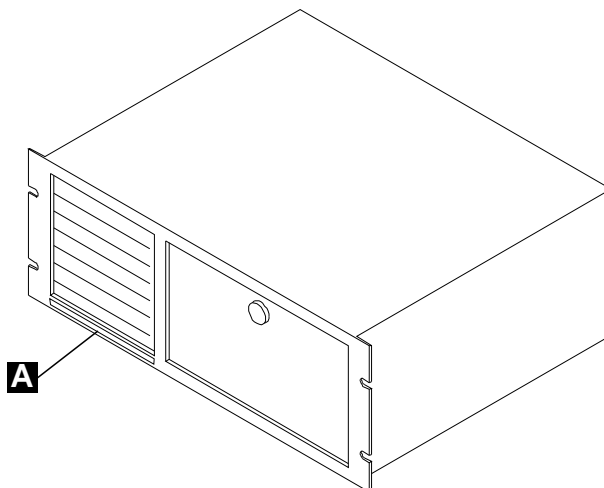


Figure 10. Installing Label on the Front Side of the Network Node Processor-B.

10.2 Connecting the NNP-B.

- 1. Plug connector **1** of cable **A** (PN 6339098) (see Figure 11) to cable **B** (PN 60G1066).
- 2. Using a sticker, identify the cable **A** as the "NNP-B cable" and plug connector **2** to **any plug** of the SPAU IBM 8228 from **1 to 8**
- 3. Plug cable **B** to **slot 7** of the NNP-B.
- 4. Connect the power cord **3** (PN 58G5783) to the NNP-B ac inlet and to J5 of the ac outlet distribution box.

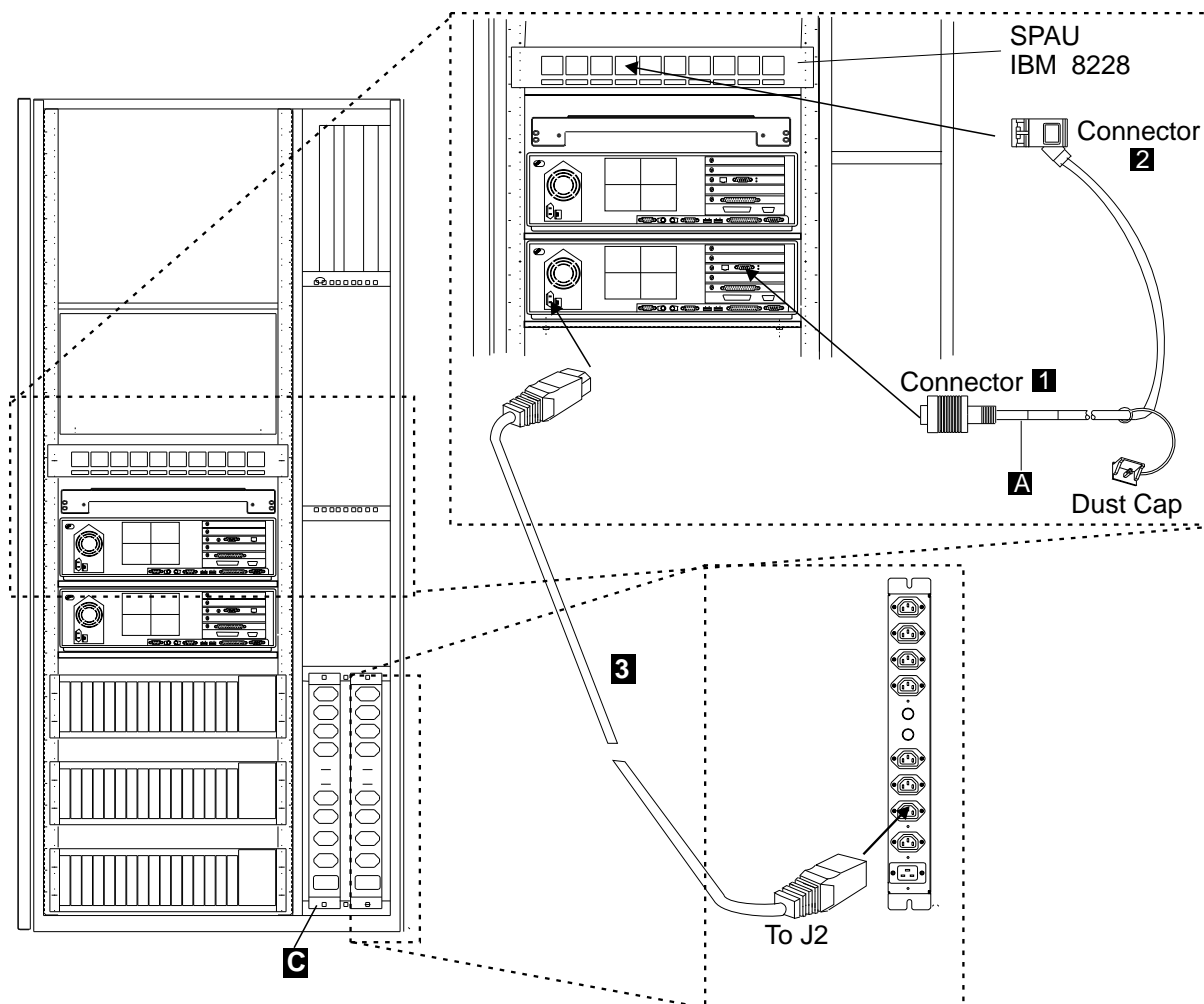


Figure 11. Connecting the NNP-B (7585)

On the NNP-B Front Site:

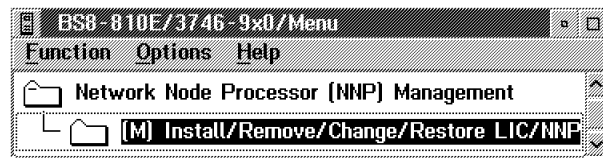
- 5. Open the access door, then press the Power button to **Switch ON** the processor.

Note: For any unexpected message or error concerning the NNP-B, go to **Chapter 3. Network Node Processor Problem Determination** of the *Network Node Processor Installation and Maintenance Manual*. SY33-2111.

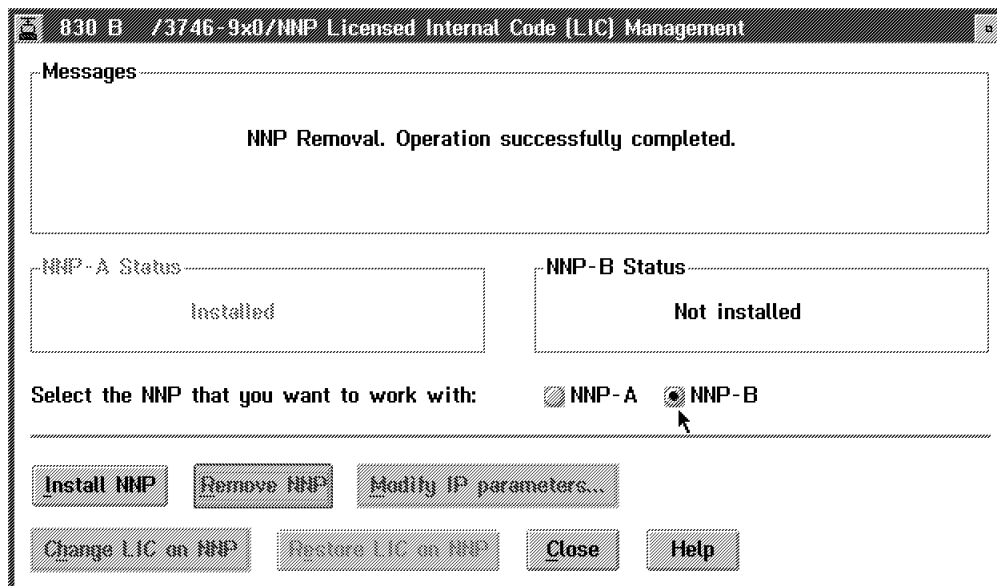
10.3 Installing the Code on the NNP-B.

On the Service Processor:

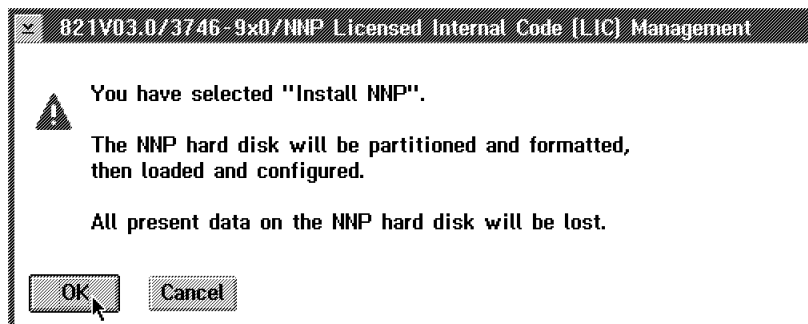
- ___ 1. On **MOSS-E View** window, click on **Program**.
- ___ 2. Click on **LOG ON MOSS-E**.
- ___ 3. Enter the maintenance password, press **Enter**.
- ___ 4. Double click on the 3746-900 or 3746-950 icon where you are going to install the NNP-B (NNP-A already installed).
- ___ 5. From the 3746-9x0 menu, click on **Network Node Processor (NNP) Management**.
- ___ 6. Double click on **(M) Install/Remove/Change/Restore LIC/NNP**.



- ___ 7. Click on **NNP-B**, then click on **Install NNP** button.



- ___ 8. Click on **OK**.



- ___ 9. Modify the **IP address**, the **Subnet mask** for the NNP-B and the **IP address** of the **3746NN** according to the values recorded by the customer on the parameter worksheet. Otherwise keep the default values and record the hostnames for later use. Then click on **OK**.

| | IP address | Subnet mask | Hostname |
|--------------------|-------------|---------------|----------|
| Service Processor: | 9.100.32.18 | 255.255.192.0 | SP11111 |
| NNP-A: | 9.100.32.19 | 255.255.192.0 | CA112345 |
| NNP-B: | 9.100.32.20 | 255.255.192.0 | CB112345 |
| 3746 NN: | 9.100.32.21 | 255.255.192.0 | |

OK Cancel Help

- ___ 10. Insert the **Network Node Processor installation diskette** in the diskette drive of the **service processor**. Then, click **OK**.

Please insert the Network Node Processor Installation Diskette in the Service Processor Drive A.

OK

- ___ 11. Select the type of NNP(B) installed, then, click **OK**.

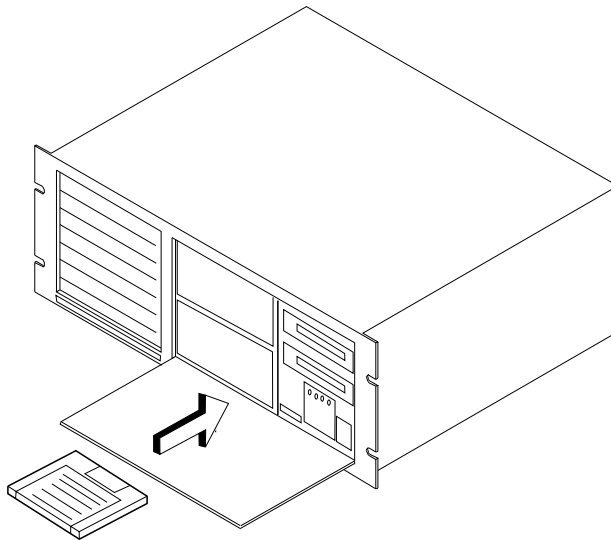
Select NNP machine type on which you will install the code:

☒ IBM 3172

☐ IBM 7585

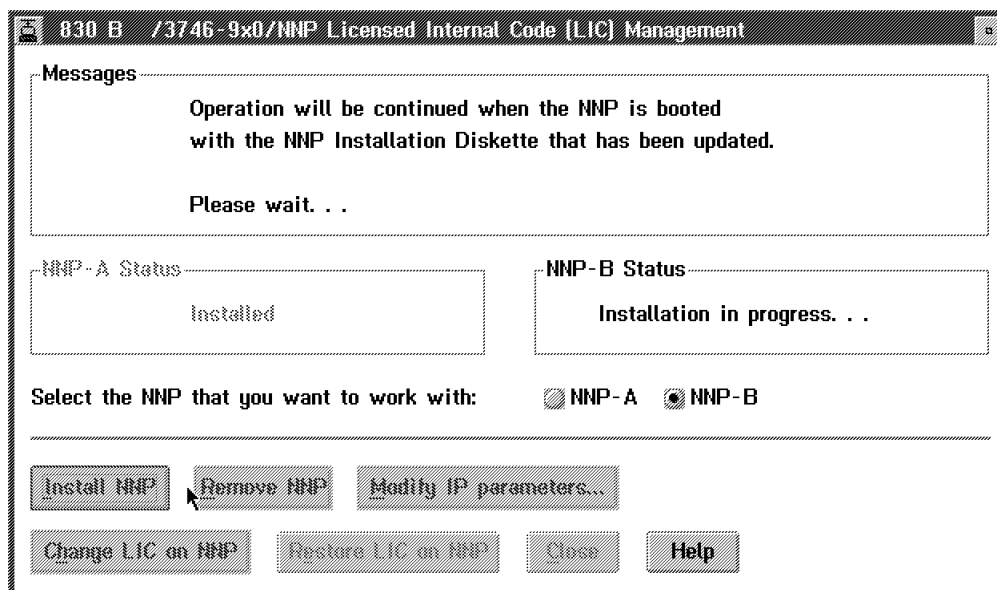
OK

- ___ 12. When the process is completed, perform the following steps,
 - ___ 1) Power OFF the Network Node Processor B.
 - ___ 2) Remove the NNP Installation Diskette from the Service Processor drive A
 - ___ 3) Insert it in the Network Node Processor drive A.

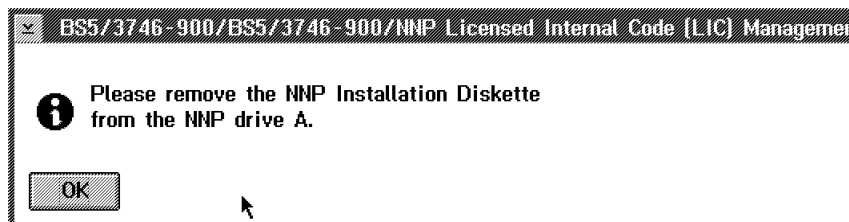


- ___ 4) Power ON the Network Node Processor B.
 - ___ 5) Then click on **OK**.
- ___ 13. To follow the progress of the installation, read the messages prompted in '**Messages**' box.

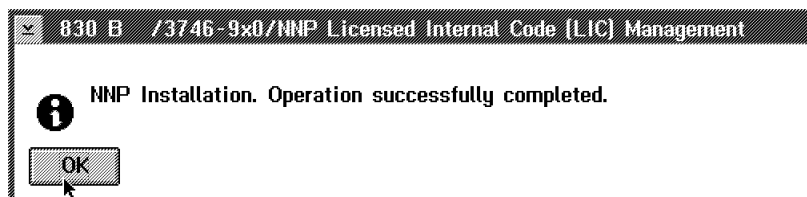
Note: It takes about 30 minutes to complete the installation



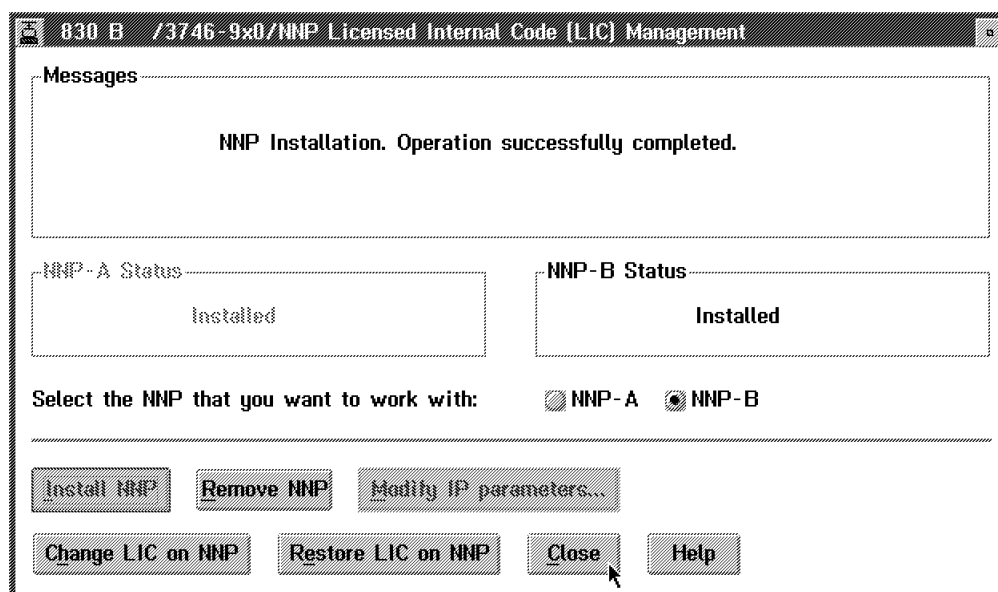
- ___ 14. As indicated in the following information message, remove the NNP-B installation diskette, then click on **OK**.



- ___ 15. On message screen **NNP Installation. Operation successfully is completed.**, click on **OK**.



- ___ 16. Click on **Close**

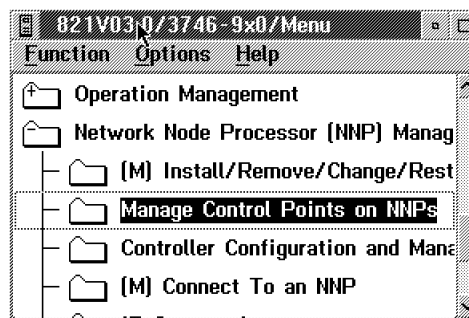


10.4 Enabling the NNP Back-up Function

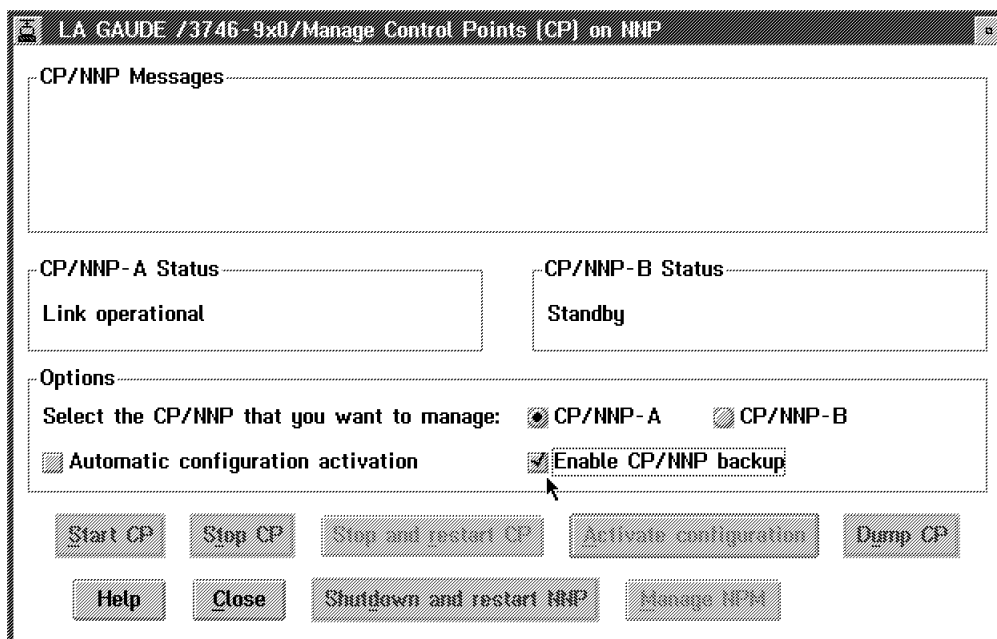
Important

It's a customer task. But ask the customer if you should perform this task.

1. On the **3746-9X0** main menu, Click on **Network Node Processor Management**.
2. Double click on **Manage Control Point on NNPs**.



3. Click on **Enable the CP/NNP back-up**.



Note: For details refer to chapter **Working with the NNP Functions** on one of the following manuals:

- 3746-950 *User's Guide*, SA33-0356, or
- 3745-17A to 61A and 3746-900 *Basic Operation Guide*, SA33-0177.

10.5 Returning the 3746-9x0 to the Customer.

1. On the **3746-9x0 Menu** window, click on **Function**, then, click on **Exit**.
2. On the **MOSS-E View** window, click on **Program**.
3. Click on **LOG OFF MOSS-E**.
4. Close the front and rear doors of the controller expansion.

11.0 Test Procedures

No test required.

12.0 Field Updating

None.

After Installation (steps 13-15)

13.0 Publications Update

None.

14.0 Parts Disposition

14.1 Purchased Machines

Refer to the parts ownership matrix to determine the correct owner of removed/unused parts.

- For EMEA/APG/AG Areas, refer to *Hardware and General Service Code Description*.
- For Domestic Areas, return parts to the customer.

15.0 Machine Records

- Install the new **MACHINE HISTORY** supplied.
- Report installation and quality problems using existing procedures.

End of instructions.

DSMKPO653E POSTSCRIPT FILE '@E@P@S' NOT FOUND.
DSMMOM395I '.EDFPO' LINE 70: .po @E@P@S
DSMMOM397I '.EDFPO' WAS IMBEDDED AT LINE 910 OF '.EDFAWRK'
DSMMOM397I '.EDFAWRK' WAS IMBEDDED AT LINE 302 OF 'P08J5497'
DSMKPO653E POSTSCRIPT FILE '@E@P@S' NOT FOUND.
DSMMOM395I '.EDFPO' LINE 70: .po @E@P@S
DSMMOM397I '.EDFPO' WAS IMBEDDED AT LINE 910 OF '.EDFAWRK'
DSMMOM397I '.EDFAWRK' WAS IMBEDDED AT LINE 400 OF 'P08J5497'
DSMBEG323I STARTING PASS 2 OF 4.
DSMKPO653E POSTSCRIPT FILE '@E@P@S' NOT FOUND.
DSMMOM395I '.EDFPO' LINE 70: .po @E@P@S
DSMMOM397I '.EDFPO' WAS IMBEDDED AT LINE 910 OF '.EDFAWRK'
DSMMOM397I '.EDFAWRK' WAS IMBEDDED AT LINE 302 OF 'P08J5497'
DSMKPO653E POSTSCRIPT FILE '@E@P@S' NOT FOUND.
DSMMOM395I '.EDFPO' LINE 70: .po @E@P@S
DSMMOM397I '.EDFPO' WAS IMBEDDED AT LINE 910 OF '.EDFAWRK'
DSMMOM397I '.EDFAWRK' WAS IMBEDDED AT LINE 400 OF 'P08J5497'
DSMBEG323I STARTING PASS 3 OF 4.
DSMKPO653E POSTSCRIPT FILE '@E@P@S' NOT FOUND.
DSMMOM395I '.EDFPO' LINE 70: .po @E@P@S
DSMMOM397I '.EDFPO' WAS IMBEDDED AT LINE 910 OF '.EDFAWRK'
DSMMOM397I '.EDFAWRK' WAS IMBEDDED AT LINE 302 OF 'P08J5497'
DSMKPO653E POSTSCRIPT FILE '@E@P@S' NOT FOUND.
DSMMOM395I '.EDFPO' LINE 70: .po @E@P@S
DSMMOM397I '.EDFPO' WAS IMBEDDED AT LINE 910 OF '.EDFAWRK'
DSMMOM397I '.EDFAWRK' WAS IMBEDDED AT LINE 400 OF 'P08J5497'
DSMBEG323I STARTING PASS 4 OF 4.
DSMKPO653E POSTSCRIPT FILE '@E@P@S' NOT FOUND.
DSMMOM395I '.EDFPO' LINE 70: .po @E@P@S
DSMMOM397I '.EDFPO' WAS IMBEDDED AT LINE 910 OF '.EDFAWRK'
DSMMOM397I '.EDFAWRK' WAS IMBEDDED AT LINE 302 OF 'P08J5497'
DSMKPO653E POSTSCRIPT FILE '@E@P@S' NOT FOUND.
DSMMOM395I '.EDFPO' LINE 70: .po @E@P@S
DSMMOM397I '.EDFPO' WAS IMBEDDED AT LINE 910 OF '.EDFAWRK'
DSMMOM397I '.EDFAWRK' WAS IMBEDDED AT LINE 400 OF 'P08J5497'