

Field Bill of Material (FBM)
INSTALLATION of MICROCODE Level F12380
and other Suffix

On 3746-9x0 attached to 3745-XXA
or
on 3746-950 alone.

Written by: C. Vallee
Checked by: C. Franoux
Approved by: A.Badino
Reviewed by: J. Wicks

3746	PN 25L9932	EC F12604	EC F12380D	EC F12589A	EC F70015	
FBM	1 of 32	20/04/98	12/05/98	23/06/98	17/05/99	



Before Installation (Steps 1-8)

WARNING to CE:

- Customer Console(s): DCAF level should be 1.3 + CSD UB20924.

New

The **Manage ESCON Processors** function is now only used to:

1. Display the **ESCON lines** status.
2. Display the **ESCON stations** status.
3. Manage the **ESCON couplers** status.

If you need to modify your **ESCON processor configuration**, use the new function **Configure ESCON Processors**, see details in 16.0, "Appendix A. ESCON Configuration." on page 30.

1.0 Machines Affected

3746 Models 9X0

- With Service Processor Type 9585 (FC 5021), 3172 (FC 5021) or 7585-P02 (FC 5052).
- Without Microcode Level F12380D.

Checkpoint: Check that the APPN EC level is F12381.003

If level is not present you must upgrade the Service Processor and the 3746-9x0 according to this instruction.

Note: Refer to **Chapter 3, Displaying the EC Level of Code** in the *Service Processor Installation and Maintenance (Based on 7585, 3172, and 9585)*, SY33-2120

2.0 Related BMs and ECs

2.1 Prerequisites

(Must be installed prior to this installation)

SP Type **Feature/BM**

7585-P02 None.

3172 64MB Memory Expansion (FC 5028) BM 08J5223.

3746 FBM	PN 25L9932 3 of 32	EC F12604 20/04/98	EC F12380D 12/05/98	EC F12589A 23/06/98	EC F70015 17/05/99	
-------------	-----------------------	-----------------------	------------------------	------------------------	-----------------------	--

9585 2GB Hard Disk Drive (FC 5026) BM 29H4179, and
64MB Memory Expansion (FC 5028) BM 08J5340.

2.2 Co-requisite

(Must be installed together)

SP Type	Feature/BM
---------	------------

7585-P02	See note below.
-----------------	-----------------

3172	Service Processor Upgrade Drive (FC 5051) BM 08J5516.
-------------	---

9585	Service Processor Upgrade Drive (FC 5051) BM 08J5516.
-------------	---

Note: Look at the rear right side of the **7585-P02** and check if the **MPA card** is installed in the adapter **slot 6** (upper)? If not, you should have received the FBM 25L4401 to install the MPA card. If not received, call your support center.

2.3 Companion

(May be installed together)

None.

3.0 BMs to be Installed

FBM	Title
25L9932	Installation of Microcode level F12380D on 3746-9x0 attached to 3745-XXA, and/or an 3746-950 stand-alone.

4.0 Preparation

- Familiarize yourself with the purpose and details of the installation instruction before negotiating machine time with the customer.
- Check all items listed on the BM(s) to determine that all parts have been received.
- Call your Support Center to obtain the Microcode Fixe(s) (MCF) to be installed with the new LIC.
- Obtain the maintenance password from the Customer.
- Ensure that both the 3745 and 3746-9x0, types and models, are registered in RETAIN (CCPF).

For U.S.A machines, please call the Raleigh Multiplexor Support Center and verify your machine's registration in CCPF for:

- The seven digit serial number of the 3745 and 3746-9x0 are correct.
- The three digit model designation for the 3745 and 3746-9x0 are correct.

3746 FBM	PN 25L9932 4 of 32	EC F12604 20/04/98	EC F12380D 12/05/98	EC F12589A 23/06/98	EC F70015 17/05/99	
-------------	-----------------------	-----------------------	------------------------	------------------------	-----------------------	--

5.0 Programming

None.

6.0 Purpose and Description

Install the new level microcode level F12380D.

- On the Service Processor, NNP(s) and MAE (if any), and
- Install on the 3746-9x0(s).

7.0 Installation Time

The installation time depends on the number of 3746-9x0 connected to the same Service Processor (Maximum 2). In the case of multiple 3746-9x0 connected to a Service Processor, global maintenance window must be requested to the customer. This will allow the customer to upgrade the 3746-900, and/or the 3746-950.

This global maintenance will be divided in up to 3 sub windows, one corresponding to each phase of the upgrade:

- Phase 1 is not disruptive to network traffic, and is used to upgrade the Service Processor and the NNP (if any).
- Phases 2 and 3, are used to update each 3746-9x0 machine attached to the Service Processor.

These phases are disruptive, but may be performed serially to avoid disrupting all machines at the same time.

- Nondisruptive operation estimated time: 3746-9x0/MOSS-E Code level upgrade on the Service Processor: 35 up-to 60 minutes for LIC install + 35 to 45 minutes per NNP + 18 minutes to apply the latest MCFs.
- Disruptive operation estimated times per 3746-9x0:
 - 3746-9x0 General IML: 6 minutes.
 - 3746-9x0 EEPROM Upgrade: 6 minutes.

FB/M Installed	Machine Hrs	System Hrs	CE Hour	Nbr of CE
25L9932	1 to 3	0.0	3	1

8.0 Tools/Materials Required

None.

3746 FBM	PN 25L9932 6 of 32	EC F12604 20/04/98	EC F12380D 12/05/98	EC F12589A 23/06/98	EC F70015 17/05/99	
-------------	-----------------------	-----------------------	------------------------	------------------------	-----------------------	--

Installation (Steps 9-12)

9.0 Safety

Not applicable.

10.0 Details of Installation

The largest configuration will be upgraded in 3 phases:

Phase 1: 3746-9x0/MOSS-E code level upgrade on the Service Processor as described in 10.1, "Procedure 1 - 3746-9x0/MOSS-E Code Level Upgrade.."

Phase 2: Code level upgrade on the first 3746-9x0, as described in 10.3, "Procedure 2 - 3746-9x0 Code Level Upgrade.."

Phase 3: Code level upgrade on the second 3746-9x0 (if any), as described in 10.3, "Procedure 2 - 3746-9x0 Code Level Upgrade.."

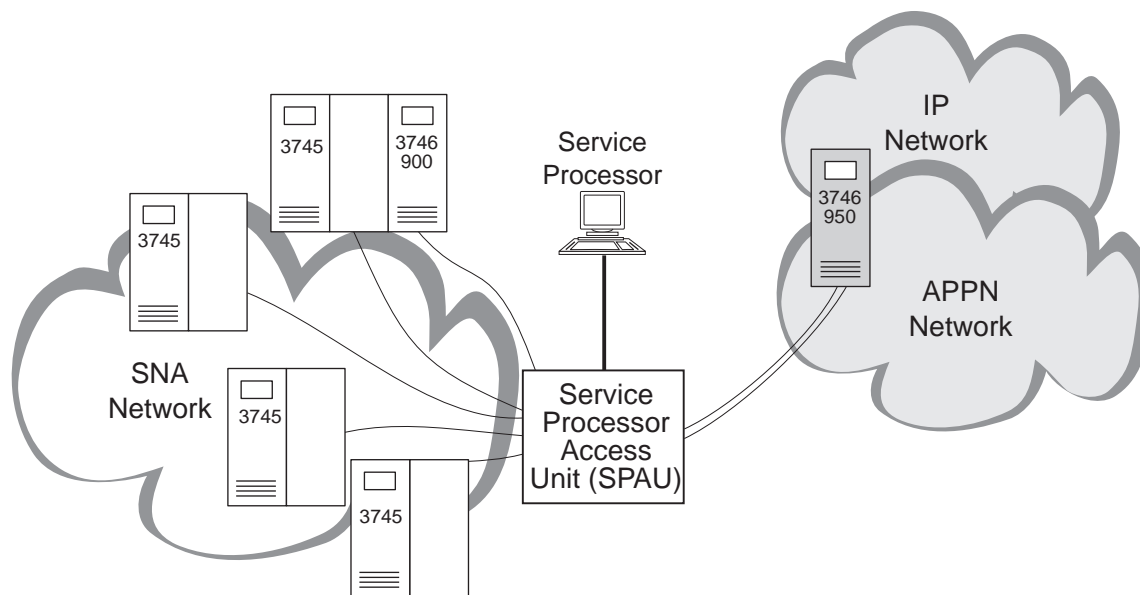


Figure 1. Service Processor Maximum Configuration.

3746 FBM	PN 25L9932 7 of 32	EC F12604 20/04/98	EC F12380D 12/05/98	EC F12589A 23/06/98	EC F70015 17/05/99	
-------------	-----------------------	-----------------------	------------------------	------------------------	-----------------------	--

10.1 Procedure 1 - 3746-9x0/MOSS-E Code Level Upgrade.

Go To

What is the EC level of the code currently installed on your SP?

- Microcode EC **F12380X** (microcode available on **CD-ROM**), go to 10.1.5, "Saving Configuration on Diskette" on page 11
- Any other EC level **prior to F12380** (microcode available on **OD**) , go to 10.1.1, "Saving the Configuration on the Optical Disk."

10.1.1 Saving the Configuration on the Optical Disk

1. If not already logged, enter the **Service Processor maintenance password** (default is IBM3745).
2. Double click on the "**Service Processor icon**".
3. Click on "**Operation Management**".
4. Double click on "**Manage Disks and Databases**".
5. Click on **Save databases on optical disk** radio button.
6. Click on "**OK**" and follow the prompts.
7. When prompted, Insert the optical disk.
8. Click on "**Cancel**" to exit from the function.

10.1.2 Installing MES Data Save Function.

1. Insert the **Customer Data Migration diskette** (PN 02L3850) in the Service Processor diskette drive.
2. Enter the Service Processor maintenance password (default is IBM3745).
3. Double click on the "**Service Processor object icon**".
4. Click on "**Change Management**".
5. Double click on "**Manage Microcode Fixes**".
6. On **Manage Microcode Fixes** window, click on "**View**" (On function bar). Then, click on "**Change directory path**" (On pull down menu)
7. On **Change Directory Path** window, enter **A:*.***. Then, click on "**OK**".

- ___ 8. On **Manage Microcode Fixes** window, click on the **fixes** to be applied.

LIC Level	Apply MCF
D2251X	MD22426.418
D2256X	MD22726.418
D4612X	MD22526.418
D4613X	MD22326.418

- ___ 9. Click on **"File"** (On the function bar). Then, click on **"Move"** (On pull down menu).
- ___ 10. On the **Move Microcode Fix files** window, enter **J:\MCF**. Then, click on **"OK"**.

Enter the new path specification following the format {drive:\directory}:

J:\MCF\

OK Cancel Help

- ___ 11. On the **Change Directory Path** window, enter **J:\MCF\ALL**. Then, click on **"OK"**.

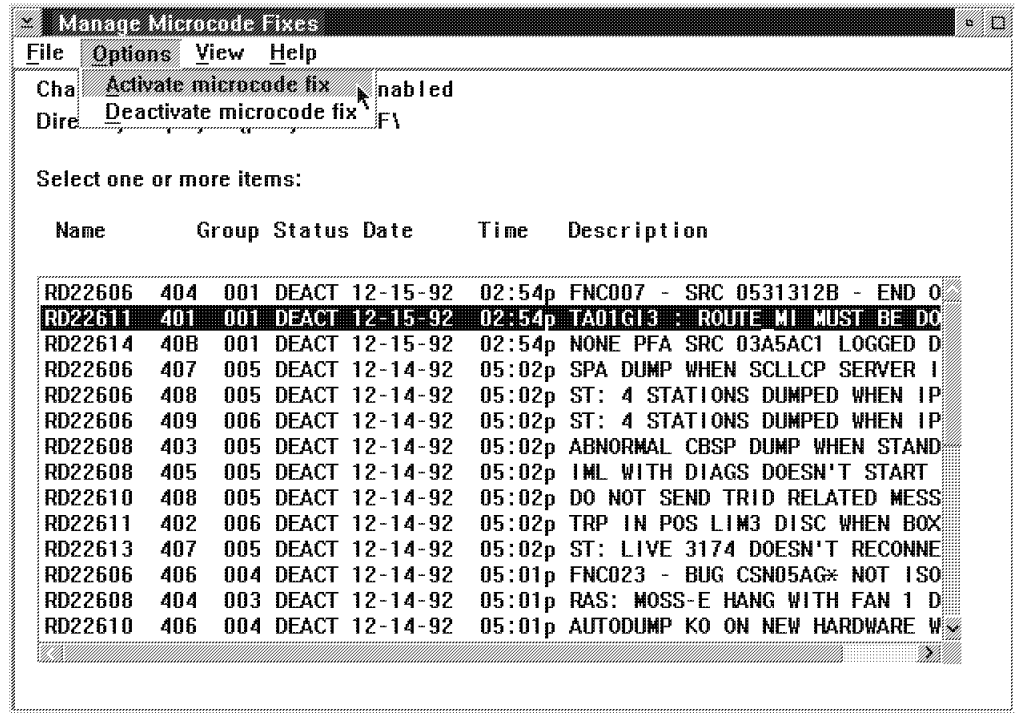
Enter the full path of path or directory to be displayed following the format {drive:\directory\filename.extension or *}, or click on the OK push button for default directory:

J:\MCF\ALL

OK Cancel Help

- ___ 12. Remove the diskette disk from the drive.

- ___ 13. On the **Manage Microcode Fixes** window, Click on the lines of the MCFs to be applied "**MES-Data Migration**", click on "**Options**" (On function bar). Then, click on **Activate microcode fix** (On pull down menu).



10.1.3 Verifying the MCF status.

- ___ 1. Enter the Service Processor maintenance password
- ___ 2. Double click on the "**Service Processor object icon**".
- ___ 3. Click on "**Change Management**".
- ___ 4. Double click on "**Manage Microcode Fixes**"
- ___ 5. Click on "**View**", click on "**Change directory path**"
- ___ 6. Enter the "**directory path**": J:\MCFALL. Then,click on **OK**.
- ___ 7. The status of the MCF just applied should be "**ACT**".

MCF Status ACT?

NO, Call Support..

YES, continue with next step.

- ___ 8. Exit the **Change Management** functions,

10.1.4 Saving Customer Data on Diskette.

- ___ 1. On the **MOSS-E View** window, click on **Program**.
- ___ 2. Double click on **Log OFF MOSS-E**, then double click on **Log ON MOSS-E**.
- ___ 3. Insert the **backup** optical disk on the ODD.
- ___ 4. Double click on the "**Service Processor object icon**".
- ___ 5. Click on "**Functions to Use Under PE Guidance Only**".
- ___ 6. Double click on "**Save Customized data on diskette**"

Note: Only one **Configuration Parameters diskette** is provided, if more than one **Configuration Parameters diskette** is required, get additional blank 1.44Mb diskette(s).

- ___ 7. When prompted, insert the **Configuration Parameters diskette** (PN 02L3427) on the diskette drive.
- ___ 8. Click on "**OK**" follow the prompts and wait for completion..
- ___ 9. Click on "**Close**".

Go to, 10.1.6, "Power OFF the Service Processor".

10.1.5 Saving Configuration on Diskette

- ___ 1. Reboot the service processor by pressing simultaneously the **Ctrl/Alt/Del** keys.
- ___ 2. For logging on, enter the **Service Processor maintenance password** (default is IBM3745).
- ___ 3. Double click on the "**Service Processor icon**".
- ___ 4. Click on "**Operation Management**".
- ___ 5. Double click on "**Manage Disks and Databases**"
- ___ 6. Click on **Save database on diskette** radio button.
- ___ 7. Click on "**OK**" and follow the prompts.
- ___ 8. When prompted, Insert the **Configuration Parameters diskette** (PN 02L3427) in the diskette drive.
- ___ 9. When completed, click on "**OK**" and remove the diskette.

10.1.6 Power OFF the Service Processor

- ___ 1. On the **MOSS-E View** window, click on **Program**.
- ___ 2. Double click on **shut-down**, then enter the maintenance password (default is IBM3745), and click on **OK**.

- ___ 3. When the pop-up appears saying shut down has completed, power OFF the Service Processor.

What is the type of your Service Processor?

7585-P02

- The **OD** drive is **installed**, Go to 10.1.7, "Removing the Optical Disk Drive (ODD) from a 7585."
- The **OD** drive is **not installed** and did you receive the **FBM 25L4401**?
 - **YES**, using the FBM 25L4401 install the MPA card then, Go to 10.1.8, "LIC Installation" on page 13.
 - **NO**, Go to 10.1.8, "LIC Installation" on page 13.

3172

- The **CD** is **not installed** (EC prior to F12380), install Service Processor Upgrade MES (FC 5051) FFBM 08J5516. Then, go to 10.1.8, "LIC Installation" on page 13
- The **CD** is **installed** on the SP (EC F12380 or F12380A), go to 10.1.8, "LIC Installation" on page 13

9585

Is the **CD** drive **installed**?

- **NO**, using FFBM 02L3496 (FC 5051), install the CD drive then, go to 10.1.8, "LIC Installation" on page 13
- **YES**, go to 10.1.8, "LIC Installation" on page 13

10.1.7 Removing the Optical Disk Drive (ODD) from a 7585

- ___ 1. **On the rear side of the ODD**, turn OFF the power switch (0).
- ___ 2. Disconnect the ODD Power cord from the ac Outlet Distribution Box or from the wall ac outlet, and the other end from the rear side of the ODD.
- ___ 3. **On the rear side of the Service Processor**, disconnect the signal cable from SCSI adapter (Position 3).
- ___ 4. Remove the ODD. Then, pack it into the return box (PN 32H0346) provided with this FBM

Did you receive the FBM 25L4401?

- **YES**, using the FBM 25L4401, install the MPA card. Then, Go to 10.1.8, "LIC Installation" on page 13.
- **NO**, Go to 10.1.8, "LIC Installation" on page 13.

3746 FBM	PN 25L9932 12 of 32	EC F12604 20/04/98	EC F12380D 12/05/98	EC F12589A 23/06/98	EC F70015 17/05/99	
-------------	------------------------	-----------------------	------------------------	------------------------	-----------------------	--

10.1.8 LIC Installation

- ___ 1. Insert the **Service Processor installation diskette 1 (PN 02L3536)** in the diskette drive, then
- ___ 2. Power **ON** the Service Processor.
- ___ 3. Insert the **CD-ROM** in the CD ROM drive.
- ___ 4. Wait for a while ... several messages will appear: Build hardisk, reboot, format ...
- ___ 5. When prompted, Insert the **Configuration Parameters diskette (PN 02L3427)** in the diskette drive.
- ___ 6. Wait for a while, when prompted insert the **Service Processor installation diskette 1 (PN 02L3536)** in the diskette drive.

Note: Service Processor installation diskette 1 (PN 02L3536) is also called **Restore Diskette** or **LIC Diskette**
- ___ 7. Wait until message Update Licensed Internal Code, Operation Successfully Completed; then, press the **Enter** key..
- ___ 8. When prompted remove the diskette from the diskette drive. Then, press **Enter** key and remove the CD.
- ___ 9. The system re-boot, wait for a while ...
Click on **OK** button when the message '**Do you want to customize your SP**' is displayed.

On the **Service Processor (SP) Customization** screen:

- ___ 10. Click on every **View Customize** check boxes.
- ___ 11. Click on **Modem type** drop down list, then select (click on) the modem and connection type of the modem used. Then, click on **Next>>** button.

Service Processor (SP) Customization

View Customize

Customer Information ☒

SP Time and Date ☒

Service LAN Addresses ☒

NetView Link/Operations ☒

☒ Enable Retain Link/Operations ☐

☒ Enable DCAF Link/Operations ☐

Modem type: Hayes 2 pin or compatible

Next>> Close Help

On the **Customer Information Customization** screen:

- ___ 12. Verify the information recorded and make the necessary changes. Then, click on **Next>>** button.

On the **SP Time and Date Customization** screen:

- ___ 13. Verify the information recorded and make the necessary changes. Then, click on **Next>>** button.

On the **Service LAN Addresses** screen:

- ___ 14. Verify the information recorded and make the necessary changes. Then, click on **Next>>** button.

	IP address	Subnet mask	Hostname	UAA/LAA
Service Processor:	9.100.76.46	255.255.255.0	SP23456	400000301111
NMP-A:	9.100.76.47	255.255.255.0	CA134568	
NMP-D:	not installed			
TIC3 2080:	9.100.76.48	255.255.255.0		
SP default router:	9.100.76.1			
MAE:	9.100.76.49	255.255.255.0	DA134568	

LAN Manager

Do you have a LAN manager? ☐ Yes ☒ No C&SM LAN ID: MOSSE

<<Previous Next>> Help

On the **Netview Link(s)/Reporting Customization** screen:

- ___ 15. Verify the information recorded and make the necessary changes. Then, click on **Next>>** button.

NetView Link(s)/Reporting Customization

☒ Generate alerts

NetView Link(s)

Link(s) through? ☐ SNA ☒ APPN

How many? ☐ 1 ☒ 2

Link type? ☒ LAN ☐ SDLC

Machine Identification

Machine type Model Serial number

3745 17A XX - XXXXX

Local Node Characteristics

Network ID Local node name

SYSTSTAP . MOSSNMVT

LAN Link

TIC2 or TIC3 LAA: 400000502080 hex

TIC3 RSAP: 08 hexadecimal [04-9C]

Customize 3270 sessions? ☒ Yes ☐ No

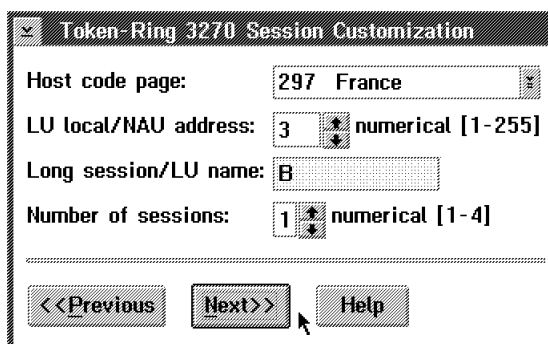
Switched SDLC Link Telephone Number

0143457280

<<Previous Next>> Help

On the **Token-Ring 3270 Session Customization** screen:

- ___ 16. Verify the information recorded and make the necessary changes. Then, click on **Next>>** button.

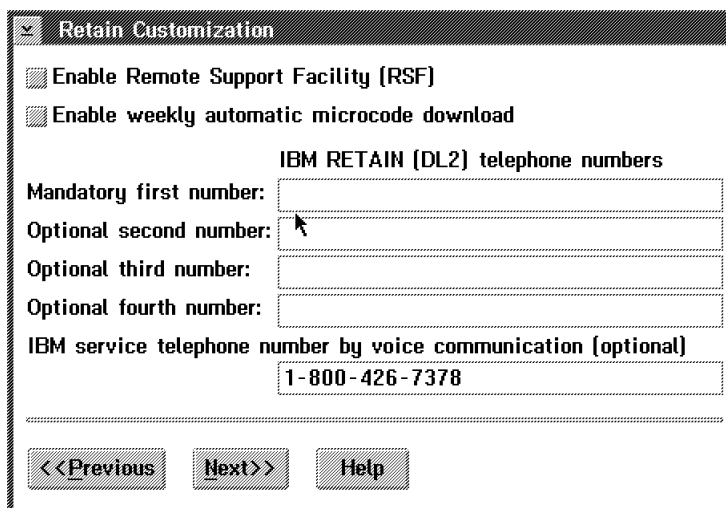


The screenshot shows the 'Token-Ring 3270 Session Customization' window. It contains the following fields and controls:

- Host code page:** A dropdown menu showing '297 France'.
- LU local/NAU address:** A numeric spinner box set to '3', with a label 'numerical [1-255]'.
- Long session/LU name:** A text box containing the letter 'B'.
- Number of sessions:** A numeric spinner box set to '1', with a label 'numerical [1-4]'.
- At the bottom, there are three buttons: '<<Previous', 'Next>>', and 'Help'. A mouse cursor is pointing at the 'Next>>' button.

On the **Retain Customization** screen:

- ___ 17. Verify the information recorded and make the necessary changes. Then, click on **Next>>** button.



The screenshot shows the 'Retain Customization' window. It contains the following fields and controls:

- Two checked checkboxes: 'Enable Remote Support Facility (RSF)' and 'Enable weekly automatic microcode download'.
- A section header: 'IBM RETAIN (DL2) telephone numbers'.
- Four text input fields: 'Mandatory first number:', 'Optional second number:', 'Optional third number:', and 'Optional fourth number:'. A mouse cursor is pointing at the 'Optional second number' field.
- A text input field labeled 'IBM service telephone number by voice communication (optional)' containing the value '1-800-426-7378'.
- At the bottom, there are three buttons: '<<Previous', 'Next>>', and 'Help'.

On the **DCAF Customization** screen:

- ___ 18. Verify the information recorded and make the necessary changes. Then, click on **Next>>** button.

On **SP Customization Message** screen:

- ___ 19. Click on **Close**, then click on **Yes** button to validate your customization.

- ___ 20. The Service Processor customization start, follow the progress on the following screen. wait until completion.

- ___ 21. Wait until completion. Then, click on **OK** button.

___ 22. If necessary, the Service Processor will reboot automatically.

Note: If an error occurs, note the displayed message and press **Enter**. Keep the diskette available for investigation (log files: EULHIERR.LOG, OUT_BAK.1 and OUT_BAK.2), stored on diskette and hard disk for PE.

___ 23. Log On the MOSS-E.

Do you have any NNP installed? _____

- **No**, go to 10.2.2, "Applying the Latest MCFs Received." on page 23
- **Yes**, continue with next step.

10.1.9 Upgrading the NNP(s) on 3746-9x0.

___ 1. On the **MOSS-E View** screen, double click on the **3746-9x0** icon.

___ 2. On the **3746-9x0 Menu** screen, click on **Network Node Processor (NNP) Management**.

___ 3. Double click on **Install/Remove/Change/Restore LIC/NNP**.

___ 4. Click on **NNP-A**, then click on **Restore LIC on NNP**.

___ 5. When requested, insert the **Network Node Processor installation diskette (PN 02L3537)** in the SP then in the NNP diskette drive and follow the prompts until **Operation successfully completed** (Up to 45')

___ 6. Click on **Close**.

___ 7. **If installed, repeat on the above procedure on NNP-B**; then, continue with next step.

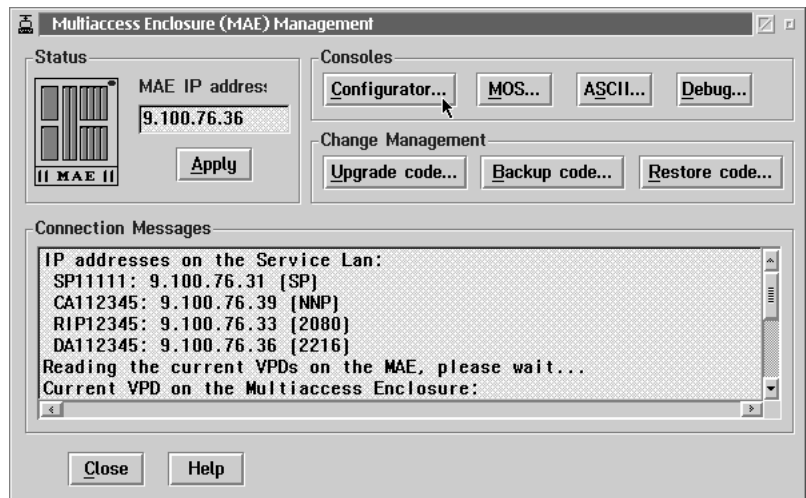
Do you have a MAE installed? _____

- **No**, go to 10.2.2, "Applying the Latest MCFs Received." on page 23
- **Yes**, did you receive a new MAE system card?
 - **No**, go to 10.1.10, "Installing the MAE Code." on page 19
 - **Yes**:
 1. Connect to the PE web at <http://www.lagaude.ibm.com/3746pe> or <http://www.lagaude.ibm.com/3746pe> and **download** and **apply** the **prerequisite MCF** required before installing the new MAE system card.
 2. Using the FBM PN **02L4064** change the system card currently installed in your MAE.
 3. Go to, 10.1.10, "Installing the MAE Code." on page 19

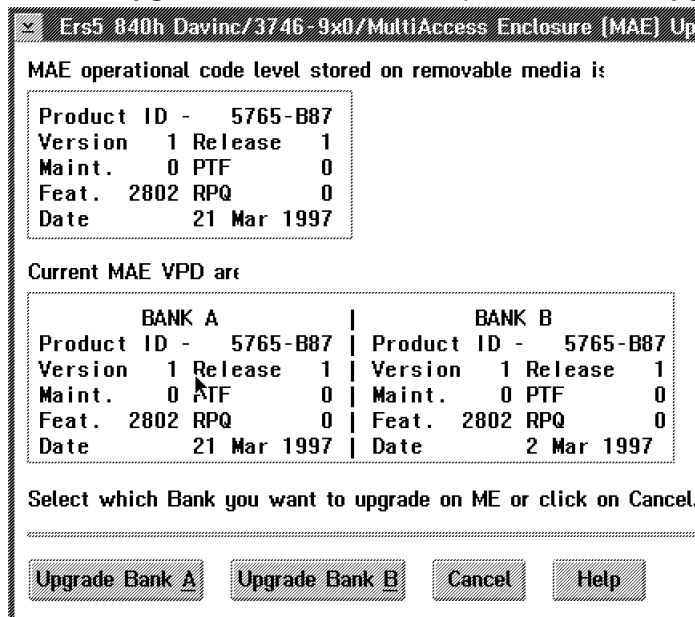
10.1.10 Installing the MAE Code.

Note: If the MAE icon is **not green**, before upgrading the code enter the MAE IP address and click on **Apply** to record this information.

- ___ 1. Insert the CD-ROM in the disk drive.
- ___ 2. On the "**Multiaccess Enclosure Management**" screen, click on "**Upgrade code...**" button.



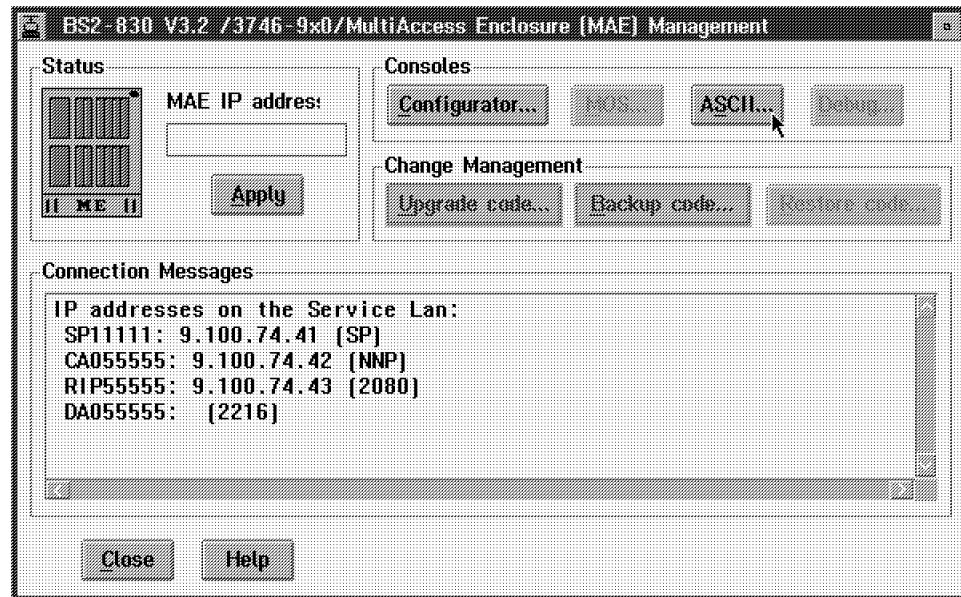
- ___ 3. Click on **Upgrade Bank A**, when completed, click on **Upgrade Bank B**.



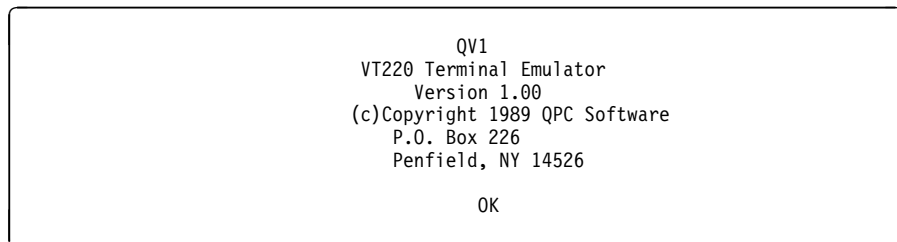
- ___ 4. When completed, click on **Cancel**.

10.2 Installing the firmware

- ___ 1. On the "**Multiaccess Enclosure Management**" screen, click on **ASCII...**".



- ___ 2. When the following screen is displayed, click on **OK**.



- ___ 3. Press the **Reset** button on the MAE.
- ___ 4. Several window are displayed during tests. Wait until the **Boot Information** window is displayed.
- ___ 5. Press **F1** when prompted (to prematurely terminate boot).
- ___ 6. Enter the Multiaccess Enclosure supervisory password when required: **2216**.

- ___ 7. On the **System Management Services** window, select **option 4 - Utilities**

```

Nways System Firmware
Version 1.0
(C) Copyright IBM Corporation, 1996 All Rights Reserved.
                        System Management Services

Select one:
  1. Manage Configuration
  2. Boot Sequence Selection
  3. Select Device to Test
  4. Utilities

Enter      -   Esc=Quit      -   F1=Help      -   F3=Reboot      -   F9=Start OS -
-----
  
```

- ___ 8. On the **System Management Utilities** window, select **option 7 - Update System Firmware**

```

Nways System Firmware
Version 1.0
(C) Copyright IBM Corporation, 1996 All Rights Reserved.
                        System Management Utilities

Select one:
  1. Set Power-On Password
  2. Set Supervisory Password
  3. Enable Unattended Start Mode
  4. Disable Unattended Start Mode
  5. Remove Power-On Password
  6. Remove Supervisory Password
  7. Update System Firmware
  8. Display Error Log
  9. View or Set Vital Product Data
 10. Manipulate Dead Man Timer
 11. Remote Initial Program Load Setup
 12. Change Management
 13. Prepare Hard Disk
Enter      -   Esc=Quit      -   F1=Help      -
-----
  
```

- ___ 9. If not already done, insert the CD-ROM in the Service Processor disk drive.

- ___ 10. From F/W Update options, select **option 2 - XMODEM a Remote Image File**.

```
Nways System Firmware
Version 1.0
(C) Copyright IBM Corporation, 1996 All Rights Reserved.
                        System Management Utilities

Select one:
  1. Set Power-On Password
  2. Set Supervisory Password
  3. Enable Unattended Start Mode
  4. Disable Unattended Start Mode
  5. Remove Power-On+-----F/W Update Options-----+
  6. Remove Supervi |
  7. Update System   | 1. TFTP a Remote Image File
  8. Display Error    | 2. XMODEM a Remote Image File
  9. View or Set Vi   | 3. Use a Local Image File
10. Manipulate Dea    |
11. Remote Initial    | Enter - Esc=Quit - F1=Help
12. Change Managem    | -----
13. Prepare Hard D+-----+

Enter - Esc=Quit - F1=Help -
-----
```

- ___ 11. When prompted to enter the X modem file name, type **firm.ld** and press **Enter**.
- ___ 12. On the action bar of the QVT screen, click on **Transfer** and from the pull down menu, select **xmodem send** then type **d:\ldm\firm.ld** and press **Start**.
- Note:** The transfer process is time-sensitive and may time out before the process starts. Restart from the F/W Update Options menu if necessary.
- If characters like '\$' appear by the message box, it means that the connection is not established.
 - If 10-12 appears, Xmodem will likely time out and need to be restarted.
- ___ 13. When the file transfer is completed, click on **OK**. Then if prompted (it depends on the MAE hardware level), select **C:firm.ld** and press **Enter**.
- ___ 14. After Xmodem completes, a message similar to the following is displayed:
- ```
This selection will update your
system firmware. Do you want to
continue?
```
- \_\_\_ 15. Type **Yes** to update the firmware and if prompted press **escape**.
- \_\_\_ 16. Press **Enter** to restart the system and activate the new firmware.
- \_\_\_ 17. Then close the ASCII window.

## 10.2.1 Installing a New Version of the MAE Configurator.

- \_\_\_ 1. If not already done, insert the CD-ROM in the Service Processor disk drive.
- \_\_\_ 2. On the "**Multiaccess Enclosure Management**" screen. click on "**Configurator...**" button.
- \_\_\_ 3. Click on "**OK**" button, the new configurator is being copied from the CD-ROM to the SP hard drive.  
  
**Note:** If the configurator is at the same level, click on close to exit.
- \_\_\_ 4. Click on "**Close**" button.

## 10.2.2 Applying the Latest MCFs Received.

### Very Important

Did you received from your Support Center any MCFs to be installed on the new LIC?

**No** Go to 10.3, "Procedure 2 - 3746-9x0 Code Level Upgrade." on page 24

**YES** Apply the MCFs received according to procedure '**Handling the Micro-code Fixes on the Licensed Internal Code**' listed in the *Service Processor Installation and Maintenance (Based on 7585, 3172, and 9585)*, SY33-2120

**End of Procedure 1, Go to 10.3, "Procedure 2 - 3746-9x0 Code Level Upgrade." on page 24 .**

|             |                        |                       |                        |                        |                       |  |
|-------------|------------------------|-----------------------|------------------------|------------------------|-----------------------|--|
| 3746<br>FBM | PN 25L9932<br>23 of 32 | EC F12604<br>20/04/98 | EC F12380D<br>12/05/98 | EC F12589A<br>23/06/98 | EC F70015<br>17/05/99 |  |
|-------------|------------------------|-----------------------|------------------------|------------------------|-----------------------|--|

## 10.3 Procedure 2 - 3746-9x0 Code Level Upgrade.

### Important

Ask the Customer for a maintenance window on the 3746-9x0 with traffic deactivated.

### 10.3.1 Performing a General IML.

- \_\_\_ 1. On the **MOSS-E View** screen, double click on the **3746-9x0** icon.
- \_\_\_ 2. On the **3746-9x0 Menu** screen, click on **Operation Management**.
- \_\_\_ 3. Double click on **Perform a General IML**; Then click on **Yes** button
- \_\_\_ 4. On the **Perform a General IML** window, click on **NO** to start an IML without diagnostic.

### 10.3.2 3746-9x0 EEPROM Upgrade.

- \_\_\_ 1. Click on **3746-9x0 Menu**.
- \_\_\_ 2. Click on **Change Management**.
- \_\_\_ 3. Double click on **Upgrade/Downgrade EEPROM**.
- \_\_\_ 4. The **Upgrade Status** area will show the processors to be changed in reverse video.
- \_\_\_ 5. Click on **OK** to start the upgrade function.  
Wait (up to 10 minutes) until the Upgrade Status is completed for each processor.
- \_\_\_ 6. Click on **Cancel** to leave the function.

### 10.3.3 Saving Configuration Parameters

- \_\_\_ 1. Double click on the **Service Processor** icon.
- \_\_\_ 2. Click on **Operation Management**.
- \_\_\_ 3. Double click on **Manage Disks and Databases**.
- \_\_\_ 4. Use the radio button to select **Save databases on diskette** to save the configuration parameters. When prompted, insert **Configuration Parameters diskette** (PN 02L3427) on the diskette drive.
- \_\_\_ 5. Click on **OK** and wait for completion. If error, note message and contact support.
- \_\_\_ 6. Click on **Cancel** to exit from the function.

### 10.3.4 Updating Installation Parameters Diskettes

Once you have upgraded the hardware of the machine, you have to regenerate the format on the Installation Parameters Diskettes using the following procedure: (Duration approximately 13 minutes)

- \_\_\_ 1. On the **Service Processor** menu, click on **Configuration Management**, click on **Manage 3745/3746 Installation/Removal**.

|             |                        |                       |                        |                        |                       |  |
|-------------|------------------------|-----------------------|------------------------|------------------------|-----------------------|--|
| 3746<br>FBM | PN 25L9932<br>24 of 32 | EC F12604<br>20/04/98 | EC F12380D<br>12/05/98 | EC F12589A<br>23/06/98 | EC F70015<br>17/05/99 |  |
|-------------|------------------------|-----------------------|------------------------|------------------------|-----------------------|--|



- \_\_\_ 2. On the **Controller Installation** menu, Click on the **3746-9x0** installed, then Click on **SAVE**.

Following pop up window confirming **Saving Active CDF-E as Reference**:

- \_\_\_ 3. Insert the **3746-900 installation parameters diskette (PN 17G5878)** of the 3746-9x0, then click on **OK**.
- \_\_\_ 4. On the third pop up screen confirming CDF-E saved to diskette, remove diskette as instructed, click on **OK**.
- \_\_\_ 5. Perform the above saving procedure for the backup diskettes, then click on **Cancel**.

**End of Procedure 2..**

**Is another 3746-9x0 installed?** \_\_\_\_\_

- **Yes**, Go to 10.3, "Procedure 2 - 3746-9x0 Code Level Upgrade." on page 24.
- **No**, Go to 10.4, "Returning the Machine to Customer."

## 10.4 Returning the Machine to Customer

**Go To** \_\_\_\_\_

Before starting the installation of this EC, which level of code was installed on your SP ?

- Microcode EC **F12380X** (microcode available on **CD-ROM**), go to 10.4.2, "Logging OFF from Service Processor." on page 28
- Any other EC level **prior to F12380** (microcode available on **OD**) , go to 10.4.1, "Adapter Code Loading per Processor Type." on page 26.

|             |                        |                       |                        |                        |                       |  |
|-------------|------------------------|-----------------------|------------------------|------------------------|-----------------------|--|
| 3746<br>FBM | PN 25L9932<br>25 of 32 | EC F12604<br>20/04/98 | EC F12380D<br>12/05/98 | EC F12589A<br>23/06/98 | EC F70015<br>17/05/99 |  |
|-------------|------------------------|-----------------------|------------------------|------------------------|-----------------------|--|

## 10.4.1 Adapter Code Loading per Processor Type.

### Note

This procedure is used to define which network routing protocol is loaded per processor type. If your customer do not want to specify this information, go to 10.4.2, "Logging OFF from Service Processor." on page 28.  
All protocols will be loaded in all type of processors.

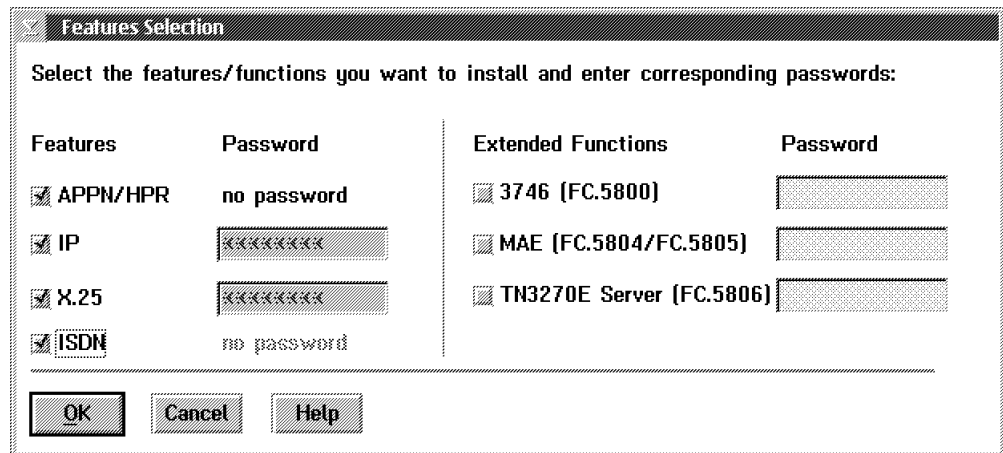
- \_\_\_ 1. On the **Service Processor** menu, click on **Configuration Management**, then click on **Manage 3745/3746 Installation/Removal**
- \_\_\_ 2. On the **Controller Installation** menu, select the 3746-9x0 by clicking on the **<3746-9x0>** line, then click on **"Select Feature"**.

| Controller | Type                 | Model      | S/N      | Last changes saved |
|------------|----------------------|------------|----------|--------------------|
| BS8-810L   | <3745 not installed> |            |          |                    |
|            | 3746                 | 950 (APPN) | 12-34567 | <Not saved>        |
| BS FVT     | 3745                 | 900        | BS-24681 | <Not saved>        |
|            | 3746                 | 900        | BS-24681 | <Not saved>        |
| <New>      | <3745 not installed> |            |          |                    |
|            | <3746 not installed> |            |          |                    |
| <New>      | <3745 not installed> |            |          |                    |
|            | <3746 not installed> |            |          |                    |
| <New>      | <3745 not installed> |            |          |                    |
|            | <3746 not installed> |            |          |                    |

Buttons: Save... Remove... Clean... Change... Repair... Select Feature Cancel Help

Status: 3746 M.E.S. 900->950

- \_\_\_ 3. On the **Feature Selection** menu, click on **OK**.



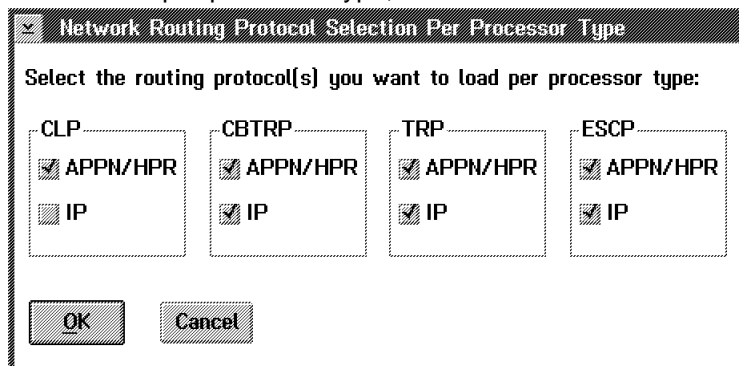
**Features Selection**

Select the features/functions you want to install and enter corresponding passwords:

| Features                                     | Password    | Extended Functions                                | Password |
|----------------------------------------------|-------------|---------------------------------------------------|----------|
| <input checked="" type="checkbox"/> APPN/HPR | no password | <input type="checkbox"/> 3746 (FC.5800)           |          |
| <input checked="" type="checkbox"/> IP       | xxxxxxx     | <input type="checkbox"/> MAE (FC.5804/FC.5805)    |          |
| <input checked="" type="checkbox"/> X.25     | xxxxxxx     | <input type="checkbox"/> TN3270E Server (FC.5806) |          |
| <input checked="" type="checkbox"/> ISDN     | no password |                                                   |          |

OK Cancel Help

4. According to the customer's requirement, On the **Network Routing Protocol Selection Per Processor Type** menu, disable or enable the protocol loaded per processor type, then click on **OK** button.



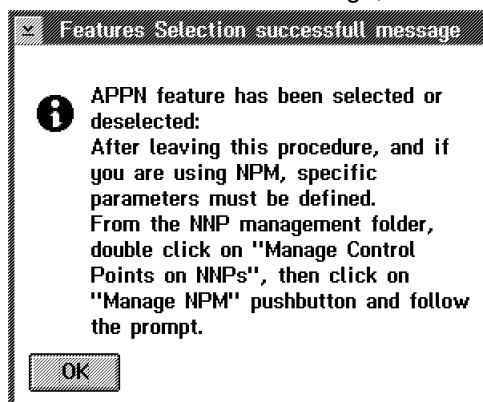
**Network Routing Protocol Selection Per Processor Type**

Select the routing protocol(s) you want to load per processor type:

| CLP                                          | CBTRP                                        | TRP                                          | ESCP                                         |
|----------------------------------------------|----------------------------------------------|----------------------------------------------|----------------------------------------------|
| <input checked="" type="checkbox"/> APPN/HPR | <input checked="" type="checkbox"/> APPN/HPR | <input checked="" type="checkbox"/> APPN/HPR | <input checked="" type="checkbox"/> APPN/HPR |
| <input type="checkbox"/> IP                  | <input checked="" type="checkbox"/> IP       | <input checked="" type="checkbox"/> IP       | <input checked="" type="checkbox"/> IP       |

OK Cancel

5. Read the information message, then click on **"OK"** button.



**Features Selection successfull message**

**i** APPN feature has been selected or deselected:  
 After leaving this procedure, and if you are using NPM, specific parameters must be defined.  
 From the NNP management folder, double click on "Manage Control Points on NNPs", then click on "Manage NPM" pushbutton and follow the prompt.

OK

6. When completed, click on **"OK"** and perform a general IML to activate the feature installed, then go to 10.4.2, "Logging OFF from Service Processor." on page 28

## 10.4.2 Logging OFF from Service Processor.

- \_\_\_ 1. On **MOSS-E View** window, click on **Program**.
- \_\_\_ 2. Click on **LOG OFF MOSS-E**.

## 11.0 Test Procedures

Not applicable.

## 12.0 Field Updating

None.

---

## After Installation (13-15)

## 13.0 Publications Update

None.

## 14.0 Parts Disposition

If during the installation of this EC you had to remove an optical disk drive, you **MUST RETURN** this Optical Disk Drive following the instructions given on the Returned Material Equipment Report (RMER) provided with this FBM.

**Return Container To :- Ship To Code 788 6XA**

IBM NEDERLAND N. V.  
C.O. NEDLOYD DISTRIBUTION CENTER  
WESTPOORT B.V.  
SCHARENBURG 1, 1046 BA AMSTERDAM  
NEDERLAND.

The LIC (Optical Disk) is declared as Sensitive parts. Keeping the Master and Back-up Disks, RETURN all extra Optical disks to your local Branch office, to be returned to plant of Manufacturing HAVANT.

|             |                        |                       |                        |                        |                       |  |
|-------------|------------------------|-----------------------|------------------------|------------------------|-----------------------|--|
| 3746<br>FBM | PN 25L9932<br>28 of 32 | EC F12604<br>20/04/98 | EC F12380D<br>12/05/98 | EC F12589A<br>23/06/98 | EC F70015<br>17/05/99 |  |
|-------------|------------------------|-----------------------|------------------------|------------------------|-----------------------|--|

## 15.0 Machine Records

- Install updated machine history provided.
- Report the installation and quality according to the existing procedure.

|             |                        |                       |                        |                        |                       |  |
|-------------|------------------------|-----------------------|------------------------|------------------------|-----------------------|--|
| 3746<br>FBM | PN 25L9932<br>29 of 32 | EC F12604<br>20/04/98 | EC F12380D<br>12/05/98 | EC F12589A<br>23/06/98 | EC F70015<br>17/05/99 |  |
|-------------|------------------------|-----------------------|------------------------|------------------------|-----------------------|--|

## 16.0 Appendix A. ESCON Configuration.

### Very Important

Since EC D22560, the functions used to define the ESCON resources have changed:

- Up to now, you could use:
  - Either the EGA tool (level 3.6, stand-alone tool). or
  - the "Manage ESCON Processors" (function accessible from the 3746-9x0 menu).
- Now, to configure your ESCON processors, a new function has been developed and added on the service processor:
  - "Configure ESCON Processors".
 Invoking this function, you will use EGA (local, level 3.8).

A new version of the EGA tool (level 3.8, stand-alone tool) is also available. With this version you can export/import a configuration to/from a diskette.

**Note:** The "Manage ESCON Processors" function is now ONLY used to:

1. Display the lines status.
2. Display the stations status.
3. Manage the ESCON couplers status.

To be able to modify the ESCON configuration, save or re-enter your ESCON parameters as follows:

#### 1. How did you define the ESCON resources?

If you have defined your ESCON resources using:

- The EGA tool (3.6), go to 5 on page 31.
- "Manage ESCON processors" function, go to 2.

#### 2. Record Your ESCON Configuration Parameters:

On your service processor:

- a. From the 3746-9x0 menu, click on **Configuration Management**.
- b. Double click on **Manage ESCON processors** and use this function to display and record your configuration parameters on a paper sheet, then go to 3.

#### 3. Install the EGA Tool (3.8):

Obtain EGA 3.8 from your SE, then install on a PS/2 (or equivalent and running OS/2). Follow the installation instructions given in the READ EGA file (accessible from MKTTOOLS).

#### 4. Re-enter your ESCON Resources Definition: Using the EGA tool, re-enter you ESCON resources according to the parameters recorded in 2, then go to 6 on page 31.

\_\_\_ 5. Install the New Version of EGA (3.8):

**Note:** To be able to recover the configuration data, install this new version on the same PS/2 where the old version was installed. Make sure that the configuration in EGA matches your current configuration. Obtain from your SE and replace your EGA with the new version (3.8) of the EGA tool. Follow the instructions given in the READ EGA file.

\_\_\_ 6. Export your ESCON Configuration using EGA:

Using EGA, export your configuration on a diskette:

- \_\_\_ a. On the EGA primary screen, click on **Subset**.
- \_\_\_ b. Click on **Export** and insert a diskette to record the configuration, then
- \_\_\_ c. Go to 7 and ask your CE to upgrade the LIC to EC F12380D

\_\_\_ 7. Install Driver EC F12380D:

Use the Installation instructions PN P25L9932, go to "Installation (Steps 9-12)" on page 7.

**Note:** When migrating from driver EC D22510"K" to EC F12380D, the current ESCON configuration is saved. When the installation is completed, using the 'Manage ESCON Processors' function you can display this configuration by selecting the option 'Display old configuration'. This can help you to check what you recorded manually in 2.

\_\_\_ 8. Import your Configuration:

From the 3746-9x0 menu:

- \_\_\_ a. Click on **Configuration Management**.
- \_\_\_ b. Double click on **Configure ESCON Processor**.
- \_\_\_ c. Click on **OK**.
- \_\_\_ d. Click on **Subset**.
- \_\_\_ e. Click on **Import** and insert the diskette which contains the configuration file saved in 6.

\_\_\_ 9. Activate your Configuration:

- \_\_\_ a. Open the imported configuration, and save it.
- \_\_\_ b. Answer 'YES' to the message asking you to transmit the configuration to the ESCP.
- \_\_\_ c. Click on **OK** on the message explaining that a re-impl of the machine is required.
- \_\_\_ d. Then, Re-IML your 3746-9x0

**End of instructions.**

|             |                        |                       |                        |                        |                       |  |
|-------------|------------------------|-----------------------|------------------------|------------------------|-----------------------|--|
| 3746<br>FBM | PN 25L9932<br>31 of 32 | EC F12604<br>20/04/98 | EC F12380D<br>12/05/98 | EC F12589A<br>23/06/98 | EC F70015<br>17/05/99 |  |
|-------------|------------------------|-----------------------|------------------------|------------------------|-----------------------|--|

|             |                        |                       |                        |                        |                       |  |
|-------------|------------------------|-----------------------|------------------------|------------------------|-----------------------|--|
| 3746<br>FBM | PN 25L9932<br>32 of 32 | EC F12604<br>20/04/98 | EC F12380D<br>12/05/98 | EC F12589A<br>23/06/98 | EC F70015<br>17/05/99 |  |
|-------------|------------------------|-----------------------|------------------------|------------------------|-----------------------|--|