

Field Bill of Material (FBM)

INSTALLATION of MICROCODE Level F12430

On 3746-900 attached to 3745-XXA
or
on 3746-950 alone.

With Service Processor Type 7585 (FC 5052)

Written by: C. Vallee
Checked by: C. Franoux
Approved by: A.Badino
Reviewed by: A. Bowen

| | | | | | | |
|-------------|-----------------------|------------------------|------------------------|--|--|--|
| 3746 FBM | PN 26L0125 1 of 38 | EC F12710 29 May 98 | EC F34775 15 Jun 98 | | | |
|-------------|-----------------------|------------------------|------------------------|--|--|--|



| | | | | | | |
|-------------|-----------------------|------------------------|------------------------|--|--|--|
| 3746 FBM | PN 26L0125 2 of 38 | EC F12710 29 May 98 | EC F34775 15 Jun 98 | | | |
|-------------|-----------------------|------------------------|------------------------|--|--|--|

Before Installation (Steps 1-8)

WARNING to CE:

- Customer Console(s): DCAF level should be 1.3 + CSD UB20924.

New

The **Manage ESCON Processors** function is now only used to:

1. Display the **ESCON lines** status.
2. Display the **ESCON stations** status.
3. Manage the **ESCON couplers** status.

If you need to modify your **ESCON processor configuration**, use the new function **Configure ESCON Processors**, see details in 16.0, "Appendix A. ESCON Configuration." on page 36.

1.0 Machines Affected

3746 Models 9X0

- With Service Processor Type 7585-P02 (FC 5052).
- Without Microcode Level F12430.

Checkpoint: Check that the APPN EC level is F12431.XXX.

If level is not present you must upgrade the Service Processor and the 3746-9x0 according to this instruction.

Note: Refer to **Chapter 3, Displaying the EC Level of Code** in the *Service Processor Installation and Maintenance (Based on 7585, 3172, and 9585)*, SY33-2120

2.0 Related BMs and ECs

| | | | | | | |
|-------------|-----------------------|------------------------|------------------------|--|--|--|
| 3746 FBM | PN 26L0125 3 of 38 | EC F12710 29 May 98 | EC F34775 15 Jun 98 | | | |
|-------------|-----------------------|------------------------|------------------------|--|--|--|

2.1 Prerequisites

(Must be installed prior to this installation)

IMPORTANT

If you are installing at the same time the **conversion** of the MAE **FC 3000** to MAE **FC 3001** (II PN 02L1268). Check that your customer has migrated his configuration files using the instructions documented in the SA33-0457, *MAE Configuration Migration Guide from FC 3000 to FC 3001*.
If not, do **NOT** install this EC before the migration of the configuration files will be completed.

2.2 Co-requisite

(Must be installed together)

Note: Look at the rear right side of the **7585-P02** and check if the **MPA card** is installed in the adapter **slot 6** (upper)? If not, you should have received the FBM 25L4401 to install the MPA card. If not received, call your support center.

2.3 Companion

(May be installed together)

| B/M | Title |
|----------------|-------------------------------------|
| 02L4064 | Install new MAE system card |
| 02L1268 | Convert MAE from FC 3000 to FC 3001 |

3.0 BMs to be Installed

| FBM | Title |
|----------------|--|
| 26L0125 | Installation of Microcode level F12430 on 3746-9x0 attached to 3745-XXA, and/or an 3746-950 stand-alone. |

4.0 Preparation

- Familiarize yourself with the purpose and details of the installation instruction before negotiating machine time with the customer.
- Check all items listed on the BM(s) to determine that all parts have been received.
- Call your Support Center to obtain the Microcode Fixe(s) (MCF) to be installed with the new LIC.
Or, connect to <http://www.lagaude.ibm.com/3746pe> and download the mandatory fixe(s).
- Obtain the maintenance password from the Customer.

| | | | | | | |
|-------------|-----------------------|------------------------|------------------------|--|--|--|
| 3746 FBM | PN 26L0125 4 of 38 | EC F12710 29 May 98 | EC F34775 15 Jun 98 | | | |
|-------------|-----------------------|------------------------|------------------------|--|--|--|

- Ensure that both the 3745 and 3746-9x0, types and models, are registered in RETAIN (CCPF).

For U.S.A machines, please call the Raleigh Multiplexor Support Center and verify your machine's registration in CCPF for:

- The seven digit serial number of the 3745 and 3746-9x0 are correct.
- The three digit model designation for the 3745 and 3746-9x0 are correct.

5.0 Programming

None.

6.0 Purpose and Description

Install the new level microcode level F12430.

- On the Service Processor, NNP(s) and MAE (if any), and
- Install on the 3746-9x0(s).

7.0 Installation Time

The installation time depends on the number of 3746-9x0 connected to the same Service Processor (Maximum 2). In the case of multiple 3746-9x0 connected to a Service Processor, global maintenance window must be requested to the customer. This will allow the customer to upgrade the 3746-900, and/or the 3746-950.

This global maintenance will be divided in up to 3 sub windows, one corresponding to each phase of the upgrade:

- Phase 1 is not disruptive to network traffic, and is used to upgrade the Service Processor and the NNP (if any).
- Phases 2 and 3, are used to update each 3746-9x0 machine attached to the Service Processor.

These phases are disruptive, but may be performed serially to avoid disrupting all machines at the same time.

- Nondisruptive operation estimated time: 3746-9x0/MOSS-E Code level upgrade on the Service Processor: 35 up-to 60 minutes for LIC install + 35 to 45 minutes per NNP + 18 minutes to apply the latest MCFs.
- Disruptive operation estimated times per 3746-9x0:
 - 3746-9x0 General IML: 6 minutes.
 - 3746-9x0 EEPROM Upgrade: 6 minutes.

| FB/M Installed | Machine Hrs | System Hrs | CE Hour | Nbr of CE |
|-------------------|----------------|------------|---------|-----------|
| 26L0125 | 1 to 3 | 0.0 | 3 | 1 |

8.0 Tools/Materials Required

None.

Installation (Steps 9-12)

9.0 Safety

Not applicable.

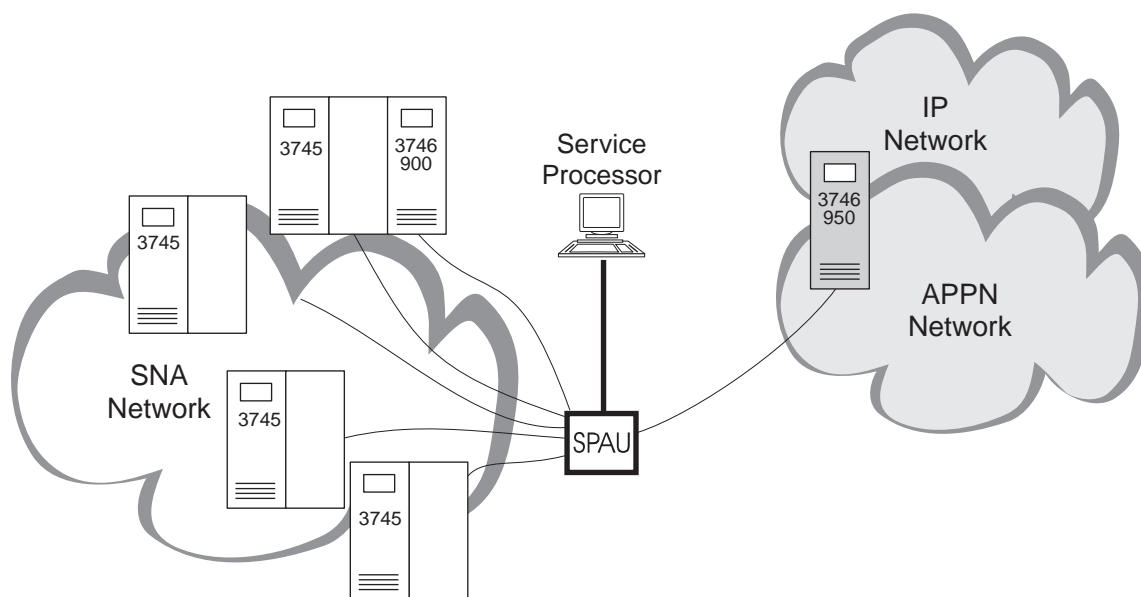
10.0 Details of Installation

The largest configuration will be upgraded in 3 phases:

Phase 1: 3746-9x0/MOSS-E code level upgrade on the Service Processor as described in 10.1, "Procedure 1 - 3746-9x0/MOSS-E Code Level Upgrade."

Phase 2: Code level upgrade on the first 3746-9x0, as described in 10.3, "Procedure 2 - 3746-9x0 Code Level Upgrade.."

Phase 3: Code level upgrade on the second 3746-9x0 (if any), as described in 10.3, "Procedure 2 - 3746-9x0 Code Level Upgrade.."



Legend

SPAU Service Processor Access Unit

Figure 1. Service Processor Maximum Configuration.

| | | | | | | |
|-------------|-----------------------|------------------------|------------------------|--|--|--|
| 3746 FBM | PN 26L0125 7 of 38 | EC F12710 29 May 98 | EC F34775 15 Jun 98 | | | |
|-------------|-----------------------|------------------------|------------------------|--|--|--|

10.1 Procedure 1 - 3746-9x0/MOSS-E Code Level Upgrade

Go To

Do you have a **MAE** (FC 3000) installed?

- **Yes**, and if you want to migrate to FC 3001 do the following:
 1. If you received a new MAE system card, using the BM **PN 02L4064** exchange the MAE **system card**.
 2. Then, using the BM **PN 02L1268** convert the MAE **FC 3000 to 3001**.
 3. When completed, go to 10.1.5, "Saving Configuration on Diskette" on page 11.
- **No**, what is the EC level of the code currently installed on your SP?
 - Microcode EC **F12380X** or above (microcode available on **CD-ROM**), go to 10.1.5, "Saving Configuration on Diskette" on page 11
 - Any other EC level **prior to F12380** (microcode available on **OD**) , go to 10.1.1, "Saving the Configuration on the Optical Disk."

10.1.1 Saving the Configuration on the Optical Disk

- ___ 1. If not already logged, enter the **Service Processor maintenance password** (default is IBM3745).
- ___ 2. Double click on the "**Service Processor icon**".
- ___ 3. Click on "**Operation Management**".
- ___ 4. Double click on "**Manage Disks and Databases**".
- ___ 5. Click on **Save databases on optical disk** radio button.
- ___ 6. Click on "**OK**" and follow the prompts.
- ___ 7. When prompted, Insert the optical disk.
- ___ 8. Click on "**Cancel**" to exit from the function.

10.1.2 Installing MES Data Save Function.

- ___ 1. Insert the **Customer Data Migration diskette** (PN 02L3850) in the Service Processor diskette drive.
- ___ 2. Enter the Service Processor maintenance password (default is IBM3745).
- ___ 3. Double click on the "**Service Processor object icon**".
- ___ 4. Click on "**Change Management**".
- ___ 5. Double click on "**Manage Microcode Fixes**".
- ___ 6. On **Manage Microcode Fixes** window, click on "**View**" (On function bar). Then, click on "**Change directory path**" (On pull down menu)
- ___ 7. On **Change Directory Path** window, enter **A:*.***. Then, click on "**OK**".

- ___ 8. On **Manage Microcode Fixes** window, click on the **fixes** to be applied.

| LIC Level | Apply MCF |
|-----------|-------------|
| D2251X | MD22426.418 |
| D2256X | MD22726.418 |
| D4612X | MD22526.418 |
| D4613X | MD22326.418 |

- ___ 9. Click on **"File"** (On the function bar). Then, click on **"Move"** (On pull down menu).
- ___ 10. On the **Move Microcode Fix files** window, enter **J:\MCF**. Then, click on **"OK"**.

Enter the new path specification following the format {drive:\directory}:

J:\MCF\

OK Cancel Help

- ___ 11. On the **Change Directory Path** window, enter **J:\MCF\ALL**. Then, click on **"OK"**.

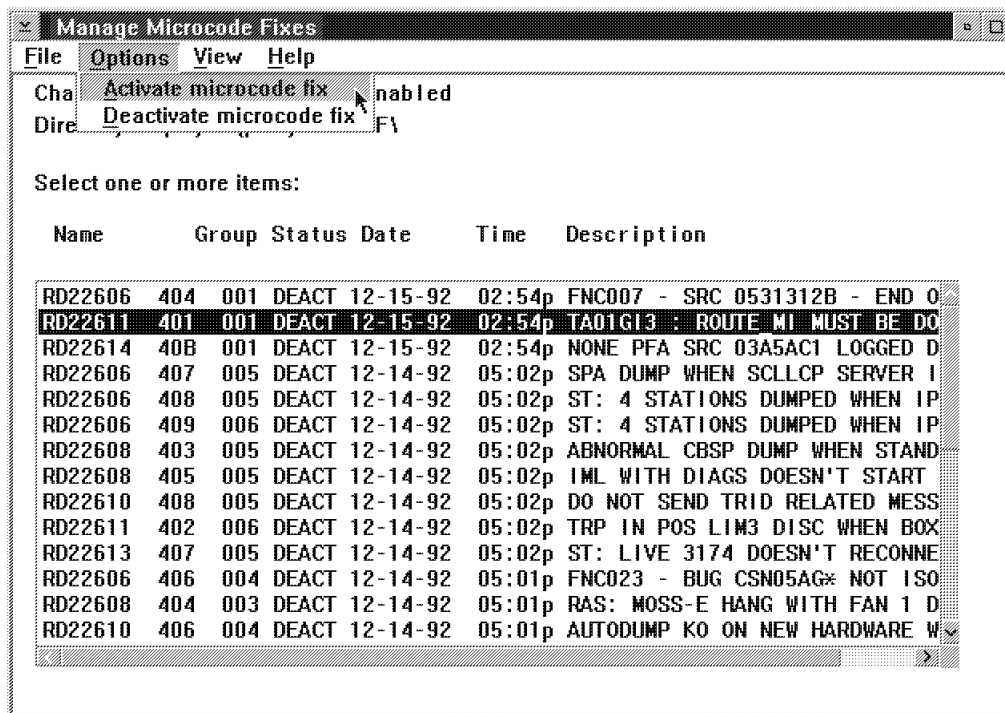
Enter the full path of path or directory to be displayed following the format {drive:\directory\filename.extension or *}, or click on the OK push button for default directory:

J:\MCF\ALL

OK Cancel Help

- ___ 12. Remove the diskette disk from the drive.

13. On the **Manage Microcode Fixes** window, Click on the lines of the MCFs to be applied **"MES-Data Migration"**, click on **"Options"** (On function bar). Then, click on **Activate microcode fix** (On pull down menu).



10.1.3 Verifying the MCF status.

1. Enter the Service Processor maintenance password
2. Double click on the **"Service Processor object icon"**.
3. Click on **"Change Management"**.
4. Double click on **"Manage Microcode Fixes"**
5. Click on **"View"**, click on **"Change directory path"**
6. Enter the **"directory path"**: J:\MCF\ALL. Then,click on **OK**.
7. The status of the MCF just applied should be **"ACT"**.

MCF Status ACT?

NO, Call Support..

YES, continue with next step.

8. Exit the **Change Management** functions

10.1.4 Saving Customer Data on Diskette.

- ___ 1. On the **MOSS-E View** window, click on **Program**.
- ___ 2. Double click on **Log OFF MOSS-E**, then double click on **Log ON MOSS-E**.
- ___ 3. Insert the **backup** optical disk on the ODD.
- ___ 4. Double click on the "**Service Processor object icon**".
- ___ 5. Click on "**Functions to Use Under PE Guidance Only**".
- ___ 6. Double click on "**Save Customized data on diskette**"

Note: Only one **Configuration Parameters diskette** is provided, if more than one **Configuration Parameters diskette** is required, get additional blank 1.44Mb diskette(s).

- ___ 7. When prompted, insert the **Configuration Parameters diskette** (PN 02L3427) on the diskette drive.
- ___ 8. Click on "**OK**" follow the prompts and wait for completion..
- ___ 9. Click on "**Close**".

Go to, 10.1.6, "Power OFF the Service Processor".

10.1.5 Saving Configuration on Diskette

- ___ 1. If not already logged, enter the **Service Processor maintenance password** (default is IBM3745).
- ___ 2. Double click on the "**Service Processor icon**".
- ___ 3. Click on "**Operation Management**".
- ___ 4. Double click on "**Manage Disks and Databases**"
- ___ 5. Click on **Save database on diskette** radio button.
- ___ 6. Click on "**OK**" and follow the prompts.
- ___ 7. When prompted, Insert the **Configuration Parameters diskette** (PN 02L3427) in the diskette drive.
- ___ 8. When completed, click on "**OK**" and remove the diskette.

10.1.6 Power OFF the Service Processor

- ___ 1. On the **MOSS-E View** window, click on **Program**.
- ___ 2. Double click on **shut-down**, then enter the maintenance password (default is IBM3745), and click on **OK**.
- ___ 3. When the pop-up appears saying shut down has completed, power OFF the Service Processor.

Go To

Is the **OD** drive **installed** on your 7585-P02?

- **YES**, Go to 10.1.7, "Removing the Optical Disk Drive (ODD) from a 7585" on page 12.
- **NO**, did you receive the **FBM 25L4401** to install the MPA card?
 - **YES**, using the FBM 25L4401 install the MPA card then, Go to 10.1.8, "LIC Installation" on page 13.
 - **NO**, Go to 10.1.8, "LIC Installation" on page 13.

10.1.7 Removing the Optical Disk Drive (ODD) from a 7585

- ___ 1. **On the rear side of the ODD**, turn OFF the power switch (0).
- ___ 2. Disconnect the ODD Power cord from the ac Outlet Distribution Box or from the wall ac outlet, and the other end from the rear side of the ODD.
- ___ 3. **On the rear side of the Service Processor**, disconnect the signal cable from SCSI adapter (Position 3).
- ___ 4. Remove the ODD. Then, pack it into the return box (PN 32H0346) provided with this FBM

Did you receive the FBM 25L4401?

- **YES**, using the FBM 25L4401, install the MPA card. Then, Go to 10.1.8, "LIC Installation" on page 13.
- **NO**, Go to 10.1.8, "LIC Installation" on page 13.

10.1.8 LIC Installation

- ___ 1. Insert the **Service Processor installation diskette PN 26L0236** in the diskette drive, then
- ___ 2. Power **ON** the Service Processor.
- ___ 3. Insert the **CD-ROM** in the CD ROM drive.
- ___ 4. Wait for a while ... several messages will appear: Build hardisk, reboot, format ...
- ___ 5. When prompted, Insert the **Configuration Parameters diskette (PN 02L3427)** in the diskette drive.
- ___ 6. Wait for a while, when prompted insert the **Service Processor installation diskette PN 26L0236** in the diskette drive.
- ___ 7. Wait until message Update Licensed Internal Code, Operation Successfully Completed; then, press the **Enter** key..
- ___ 8. When prompted remove the diskette from the diskette drive. Then, press **Enter** key and remove the CD.
- ___ 9. The system re-boot, wait for a while ...
Click on **OK** button when the message '**Do you want to customize your SP**' is displayed.

On the **Service Processor (SP) Customization** screen:

- ___ 10. Click on every **View Customize** check boxes.
- ___ 11. Click on **Modem type** drop down list, then select (click on) the modem and connection type of the modem used. Then, click on **Next>>** button.

| Service Processor (SP) Customization | |
|--|-------------------------------------|
| | View Customize |
| Customer Information | <input checked="" type="checkbox"/> |
| SP Time and Date | <input checked="" type="checkbox"/> |
| Service LAN Addresses | <input checked="" type="checkbox"/> |
| NetView Link/Operations | <input checked="" type="checkbox"/> |
| <input checked="" type="checkbox"/> Enable Retain Link/Operations | <input type="checkbox"/> |
| <input checked="" type="checkbox"/> Enable DCAF Link/Operations | <input type="checkbox"/> |
| Modem type: Hayes Optima or compatible | |
| <input type="button" value="Next>>"/> <input type="button" value="Close"/> <input type="button" value="Help"/> | |

On the **Customer Information Customization** screen:

- ___ 12. Verify the information recorded and make the necessary changes. Then, click on **Next>>** button.

On the **SP Time and Date Customization** screen:

- ___ 13. Verify the information recorded and make the necessary changes. Then, click on **Next>>** button.

On the **Service LAN Addresses** screen:

- ___ 14. Verify the information recorded and make the necessary changes. Then, click on **Next>>** button.

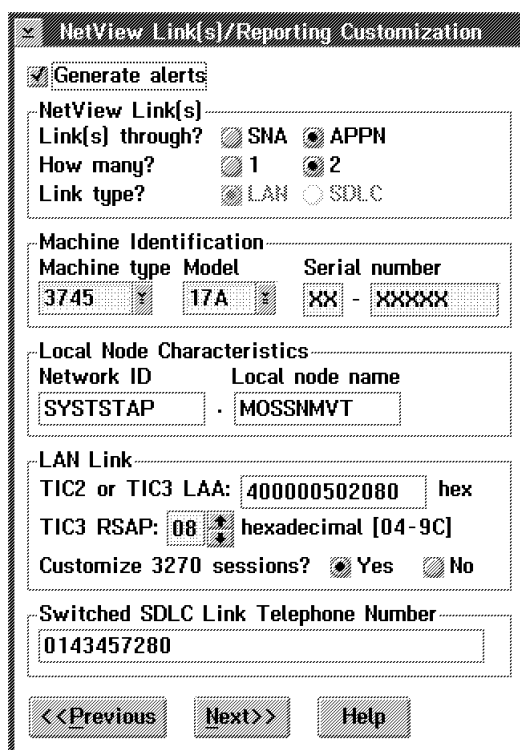
| | IP address | Subnet mask | Hostname | UAA/LAA |
|--------------------|---------------|---------------|----------|--------------|
| Service Processor: | 9.100.76.46 | 255.255.255.0 | SP23456 | 400000301111 |
| NMP-A: | 9.100.76.47 | 255.255.255.0 | CA134568 | |
| NMP-D: | not installed | | | |
| TIC3 2080: | 9.100.76.48 | 255.255.255.0 | | |
| SP default router: | 9.100.76.1 | | | |
| MAE: | 9.100.76.49 | 255.255.255.0 | DA134568 | |

LAN Manager

Do you have a LAN manager? ☐ Yes ☒ No C&SM LAN ID:

On the **Netview Link(s)/Reporting Customization** screen:

- ___ 15. Verify the information recorded and make the necessary changes. Then, click on **Next>>** button.



NetView Link(s)/Reporting Customization

☒ **Generate alerts**

NetView Link(s)

Link(s) through? ☐ SNA ☒ APPN

How many? ☐ 1 ☒ 2

Link type? ☒ LAN ☐ SDLC

Machine Identification

Machine type Model Serial number

3745 17A XX - XXXXX

Local Node Characteristics

Network ID Local node name

SYSTSTAP . MOSSNMVT

LAN Link

TIC2 or TIC3 LAA: 400000502080 hex

TIC3 RSAP: 08 hexadecimal [04-9C]

Customize 3270 sessions? ☒ Yes ☐ No

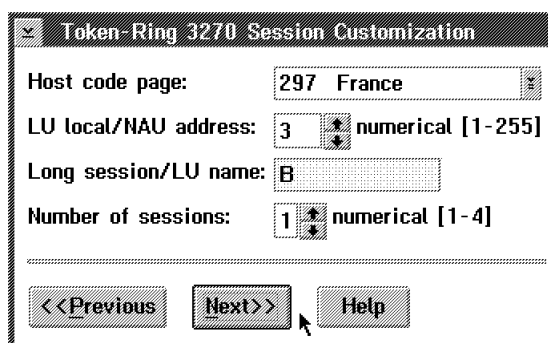
Switched SDLC Link Telephone Number

0143457280

<<Previous Next>> Help

On the **Token-Ring 3270 Session Customization** screen:

- ___ 16. Verify the information recorded and make the necessary changes. Then, click on **Next>>** button.



Token-Ring 3270 Session Customization

Host code page: 297 France

LU local/NAU address: 3 numerical [1-255]

Long session/LU name: B

Number of sessions: 1 numerical [1-4]

<<Previous Next>> Help

On the **Retain Customization** screen:

- ___ 17. Verify the information recorded and make the necessary changes. Then, click on **Next>>** button.

Retain Customization

☒ Enable Remote Support Facility (RSF)
☒ Enable weekly automatic microcode download

IBM RETAIN (DL2) telephone numbers

Mandatory first number:
Optional second number:
Optional third number:
Optional fourth number:

IBM service telephone number by voice communication (optional)
1-800-426-7378

<<Previous

Next>>

Help

On the **DCAF Customization** screen:

- ___ 18. Verify the information recorded and make the necessary changes. Then, click on **Next>>** button.

DCAF Customization

Attached Consoles

| | LU name | Destination address (hexadecimal) | RSAP (hex [04-9C]) |
|--|----------|-----------------------------------|--------------------|
| <input checked="" type="checkbox"/> SNA | DCAFSNA | 400000502080 | 04 |
| <input checked="" type="checkbox"/> APPN | DCAFAPPN | 400000502080 | 08 |
| <input checked="" type="checkbox"/> LAN | DCAFLAN | | |

SDLC Attached Console

☒ SDLC DCAFSDLC

Accept any incoming calls on SP? ☒ Yes ☐ No

Local phone number: 0492116106

<<Previous Next>> Help

On **SP Customization Message** screen:

- ___ 19. Click on **Close**, then click on **Yes** button to validate your customization.

SP Customization Message

? You have terminated your SP customization. Click on:

- Yes to validate your customization,
- or No to exit without saving,
- or Cancel to return to SP customization.

Yes No Cancel Help

- ___ 20. The Service Processor customization start, follow the progress on the following screen. wait until completion.

Service Processor Customization - Progress

Service Processor customization in progress. It may take a few minutes to complete. Please wait ..

- ___ 21. Wait until completion. Then, click on **OK** button.

Service Processor Customization Completion

i The Service Processor Customization successfully completed.

OK

___ 22. If necessary, the Service Processor will reboot automatically.

Note: If an error occurs, note the displayed message and press **Enter**. Keep the diskette available for investigation (log files: EULHIERR.LOG, OUT_BAK.1 and OUT_BAK.2), stored on diskette and hard disk for PE.

___ 23. Log On the MOSS-E.

Do you have any NNP installed?

- **No**, go to 10.2.1, "Applying the Latest MCFs Received." on page 27
- **Yes**, continue with next step.

10.1.9 Upgrading the NNP(s) on 3746-9x0.

___ 1. On the **MOSS-E View** screen, double click on the **3746-9x0** icon.

___ 2. On the **3746-9x0 Menu** screen, click on **Network Node Processor (NNP) Management**.

___ 3. Double click on **Install/Remove/Change/Restore LIC/NNP**.

___ 4. Click on **NNP-A**, then click on **Restore LIC on NNP**.

___ 5. When requested, insert the **Network Node Processor installation diskette (PN 02L3537)** in the SP then in the NNP diskette drive and follow the prompts until **Operation successfully completed** (Up to 45')

___ 6. Click on **Close**.

___ 7. **If installed, repeat on the above procedure on NNP-B**; then, continue with next step.

Do you have a MAE installed?

- **No**, go to 10.2.1, "Applying the Latest MCFs Received." on page 27
- **Yes**, go to 10.1.10, "Installing the MAE ." on page 20.

10.1.10 Installing the MAE .

- ___ 1. Double click on the "3746-9X0 object icon"
- ___ 2. Click on "Multiaccess Enclosure Management".
- ___ 3. Now double click on **Install/Remove/Change LIC on MAE**.

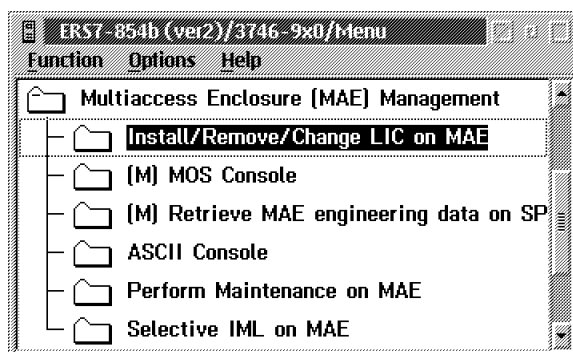


Figure 2. Install Multiaccess Enclosure

- ___ 4. Click on **Install MAE....**

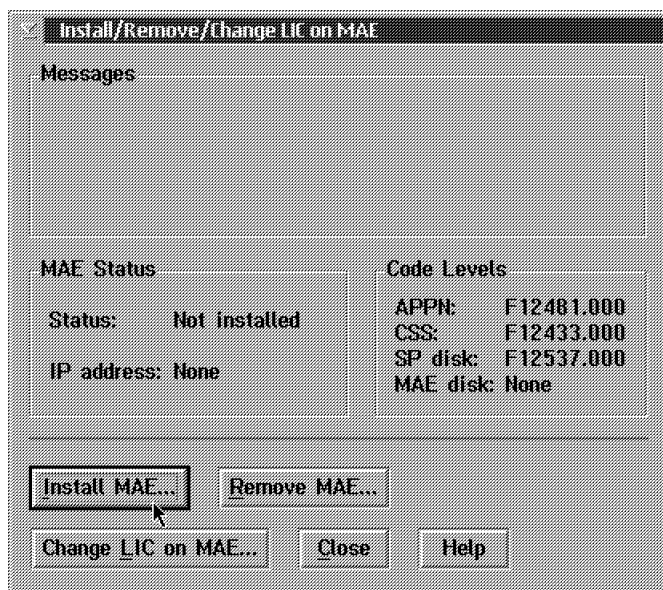
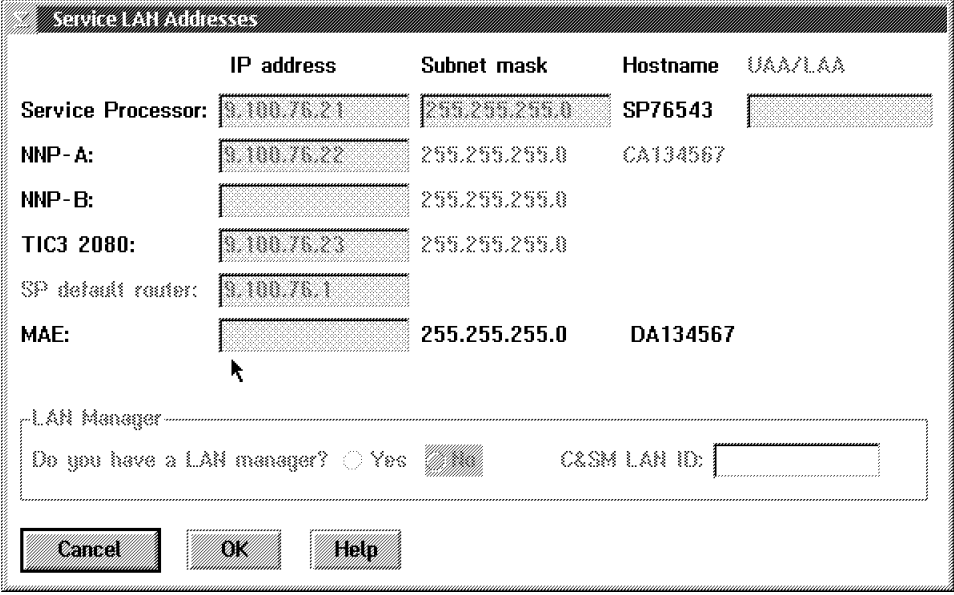


Figure 3. Install Multiaccess Enclosure

- 5. Verify or enter the **MAE IP address**, then click on **OK**.



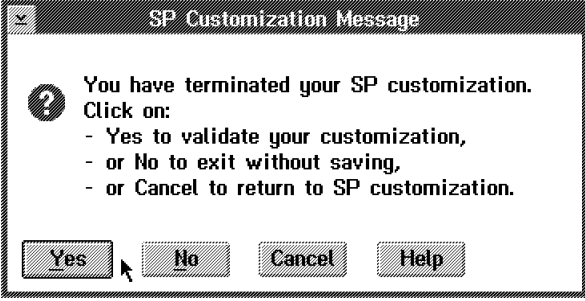
The 'Service LAN Addresses' dialog box contains a table with the following data:

| | IP address | Subnet mask | Hostname | UAA/LAA |
|--------------------|-------------|---------------|----------|---------|
| Service Processor: | 9.100.76.21 | 255.255.255.0 | SP76543 | |
| NNP-A: | 9.100.76.22 | 255.255.255.0 | CA134567 | |
| NNP-B: | | 255.255.255.0 | | |
| TIC3 2080: | 9.100.76.23 | 255.255.255.0 | | |
| SP default router: | 9.100.76.1 | | | |
| MAE: | | 255.255.255.0 | DA134567 | |

Below the table, there is a section for 'LAN Manager' with the question 'Do you have a LAN manager?' and two radio buttons: 'Yes' and 'No' (selected). To the right is a field for 'C&SM LAN ID:'. At the bottom are 'Cancel', 'OK', and 'Help' buttons.

Figure 4. Service LAN Addresses

- 6. Click on **Yes** to record your parameters.



The 'SP Customization Message' dialog box contains the following text:

? You have terminated your SP customization.
Click on:

- Yes to validate your customization,
- or No to exit without saving,
- or Cancel to return to SP customization.

At the bottom are 'Yes', 'No', 'Cancel', and 'Help' buttons. A mouse cursor is pointing at the 'Yes' button.

Figure 5. SP Customization Message

- 7. When completed, click on **OK**.



The 'Service LAN Addresses Customization Completion' dialog box contains the following text:

i Service LAN Addresses Customization successfully completed.

At the bottom is an 'OK' button.

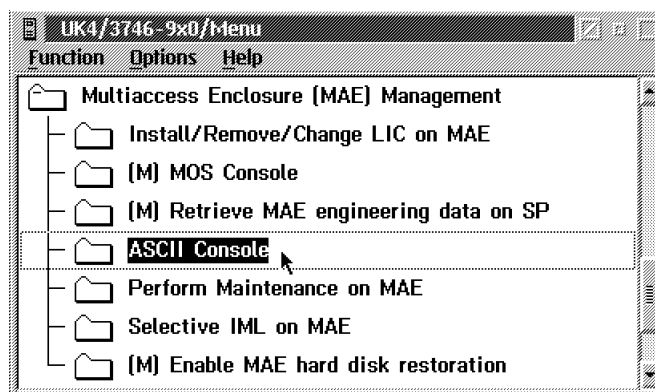
Figure 6. SP Customization Completed

- 8. The MAE code is now being installed (it takes about 10 mn), when completed click on **Close**.

Note: Verify that the MAE link icon is **green**.

10.2 Installing the firmware

- ___ 1. Double click on **ASCII Console**".



- ___ 2. When the QVT screen is displayed, click on **OK**.
- ___ 3. Press the **Reset** button on the MAE.
- ___ 4. Several window are displayed during tests. Wait until the **Boot Information** window is displayed.
- ___ 5. Press **F1** when prompted (to prematurely terminate boot).
- ___ 6. Enter the Multiaccess Enclosure supervisory password when required: **2216**.
- ___ 7. On the **System Management Services** window, select **option 4 - Utilities**

```

Nways System Firmware
Version 1.0
(C) Copyright IBM Corporation, 1996 All Rights Reserved.
      System Management Services

Select one:
  1. Manage Configuration
  2. Boot Sequence Selection
  3. Select Device to Test
  4. Utilities

Enter      -   Esc=Quit    -   F1=Help    -   F3=Reboot  -   F9=Start OS -
-----

```

- ___ 8. Select **7. Update System Firmware** from the utilities panel.
- ___ 9. The System Firmware Update panel is displayed:

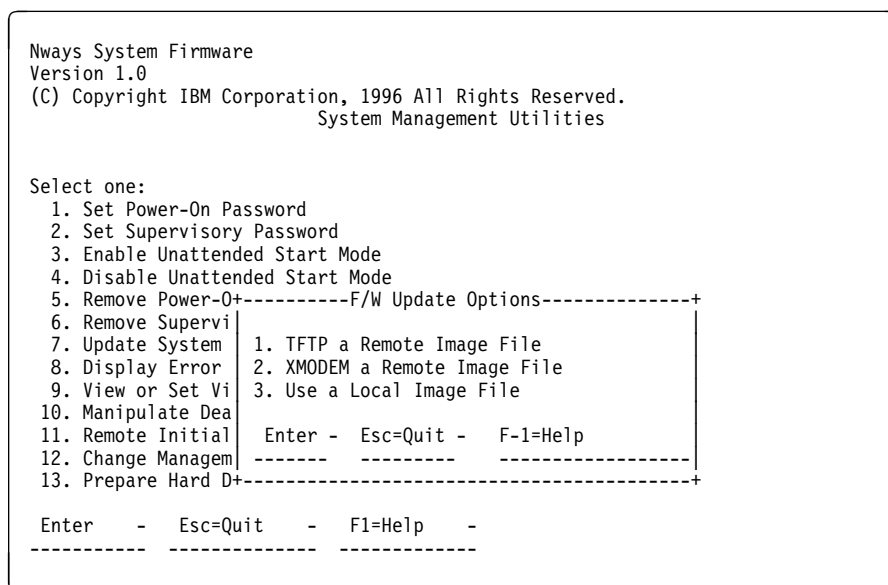
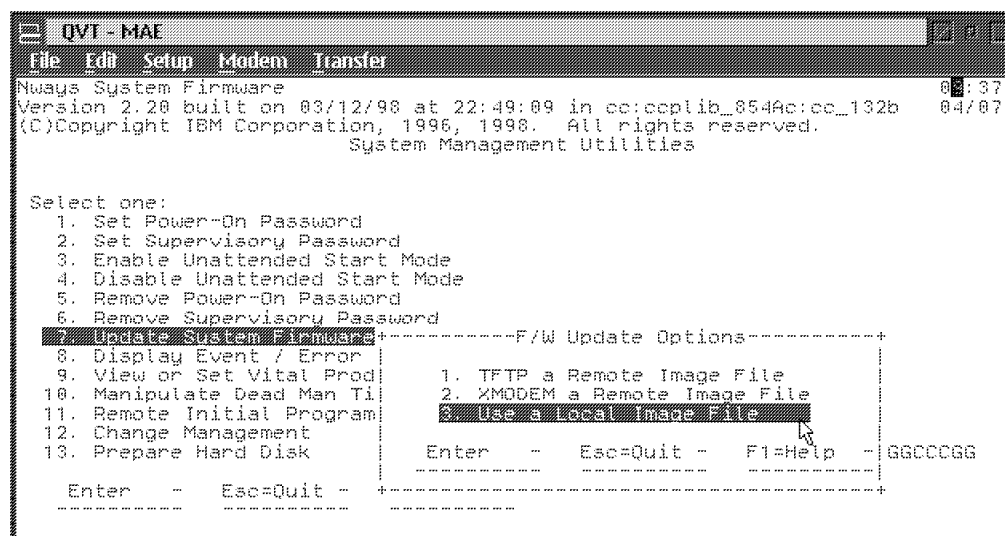


Figure 7. System Firmware Update Panel

Attention: Do not power off the multiaccess enclosure during the process of updating the firmware. If the update fails, the multiaccess enclosure will boot a backup firmware image. If this happens, repeat the update procedure to reload the onboard firmware image.

- ___ 10. From the **F/W Update Options** menu, select **3. Use a Local Image File**, then press **Enter**.



- ___ 11. Follows the prompts, enter the **Local File Name**,
c:\firm.ld
then press **Enter**

- ___ 12. On confirmation window, press **Y**.
___ 13. The following window is displayed:

press **Enter**.

___ 14. When recovery image has been done:

```

QVT - MAE
File Edit Setup Modem Transfer
Nways System Firmware 15:43:
Version 3.00 built on 05/06/98 at 01:32:25 in cc3:ccplib_854Fa:cc3_8b 05/19/
(C)Copyright IBM Corporation, 1996, 1998. All rights reserved.
System Management Utilities

Select one:
1. Set Power-On Password
2. Set Supervisor+-----System Firmware Update-----+
3. Enable Unatten|
4. Disable Unatte| The firmware recovery image has been
5. Remove Power-O| created successfully. Press Enter
6. Remove Supervi| to continue with the firmware
7. Update System  | update.
8. Display Event
9. View or Set Vi | Enter -
10. Manipulate Dea | -----
11. Remote Initial+-----+
12. Change Management | Enter - Esc=Quit - F1=Help -
13. Prepare Hard Disk | -----
Enter - Esc=Quit - +-----+
  
```

press **Enter**.

___ 15. Several windows are displayed following by:

```

QVT - MAE
File Edit Setup Modem Transfer
Nways System Firmware 09:39:
Version 2.20 built on 03/12/98 at 22:49:09 in cc:ccplib_854Ac:cc_132b 04/07/
(C)Copyright IBM Corporation, 1996, 1998. All rights reserved.
System Management Utilities

Select one:
1. Set Power-On Password
2. Set Sup+-----System Firmware Update-----+
3. Enable
4. Disable | System firmware update in progress...
5. Remove
6. Remove | Do not turn off the system at this time.
7. Update
8. Display
9. View or
10. Manipul
11. Remote
12. Change +-----+
13. Prepare Hard Disk | Enter - Esc=Quit - F1=Help - GGCCCGG
Enter - Esc=Quit - +-----+
  
```

Note: Do not switch the system off. The process erases the old firmware and copies the new firmware into flash memory. If the machine is powered off before the process is complete, you will need to reload the firmware from the recovery image.

- ___ 16. A completed message appears when the firmware is updated.

- ___ 17. Press **Enter** to restart the system.
- ___ 18. Press **F1** when prompted to terminate the boot.
- ___ 19. Then close the ASCII window.

10.2.1 Applying the Latest MCFs Received.

Very Important

Did you received from your Support Center any MCFs to be installed on the new LIC?

No Go to 10.3, "Procedure 2 - 3746-9x0 Code Level Upgrade." on page 28

YES Apply the MCFs received according to procedure '**Handling the Micro-code Fixes on the Licensed Internal Code**' listed in the *Service Processor Installation and Maintenance (Based on 7585, 3172, and 9585)*, SY33-2120

End of Procedure 1, Go to 10.3, "Procedure 2 - 3746-9x0 Code Level Upgrade." on page 28 .

10.3 Procedure 2 - 3746-9x0 Code Level Upgrade.

Important

Ask the Customer for a maintenance window on the 3746-9x0 with traffic deactivated.

10.3.1 3746-9x0 EEPROM Upgrade.

- ___ 1. Click on **3746-9x0 Menu**.
- ___ 2. Click on **Change Management**.
- ___ 3. Double click on **Upgrade/Downgrade EEPROM**.
- ___ 4. The **Upgrade Status** area will show the processors to be changed in reverse video.
- ___ 5. Click on **OK** to start the upgrade function.
Wait (up to 10 minutes) until the Upgrade Status is completed for each processor.
- ___ 6. Click on **Cancel** to leave the function.

10.3.2 Saving Configuration Parameters

- ___ 1. Double click on the **Service Processor** icon.
- ___ 2. Click on **Operation Management**.
- ___ 3. Double click on **Manage Disks and Databases**.
- ___ 4. Use the radio button to select **Save databases on diskette** to save the configuration parameters. When prompted, insert **Configuration Parameters diskette** (PN 02L3427) on the diskette drive.
- ___ 5. Click on **OK** and wait for completion. If error, note message and contact support.
- ___ 6. Click on **Cancel** to exit from the function.

10.3.3 Updating Installation Parameters Diskettes

Once you have upgraded the hardware of the machine, you have to regenerate the format on the Installation Parameters Diskettes using the following procedure:
(Duration approximately 13 minutes)

- ___ 1. On the **Service Processor** menu, click on **Configuration Management**, click on **Manage 3745/3746 Installation/Removal**.
- ___ 2. On the **Controller Installation** menu, Click on the **3746-9x0** installed, then Click on **SAVE**.

Following pop up window confirming **Saving Active CDF-E as Reference**:

- ___ 3. Insert the **3746-900 installation parameters diskette (PN 17G5878)** of the 3746-9x0, then click on **OK**.

- ___ 4. On the third pop up screen confirming CDF-E saved to diskette, remove diskette as instructed, click on **OK**.
- ___ 5. Perform the above saving procedure for the backup diskettes, then click on **Cancel**.

10.3.4 Performing a General IML.

- ___ 1. On the **MOSS-E View** screen, double click on the **3746-9x0** icon.
- ___ 2. On the **3746-9x0 Menu** screen, click on **Operation Management**.
- ___ 3. Double click on **Perform a General IML**; Then click on **Yes** button
- ___ 4. On the **Perform a General IML** window, click on **NO** to start an IML without diagnostic.

Important Note

Following this installation the traffic can't be reactivated without **updating the configuration files**. Ask your customer or update the files as described in chapter 10.4.1, "Updating the Configuration Files" on page 30

End of Procedure 2..

Is another 3746-9x0 installed?

- **Yes**, Go to 10.3, "Procedure 2 - 3746-9x0 Code Level Upgrade." on page 28.
- **No**, Go to 10.4, "Returning the Machine to Customer" on page 30.

10.4 Returning the Machine to Customer

10.4.1 Updating the Configuration Files

With this new level of code the **configuration files** must be **updated**, update the files as follows:

- ___ 1. Double click on the **3746-9X0 Icon**.
- ___ 2. Click on **Network Node Processor (NNP) Management**
- ___ 3. Double click on **CCM - Controller Configuration and Management**
- ___ 4. Click on **File**, click on **Open**

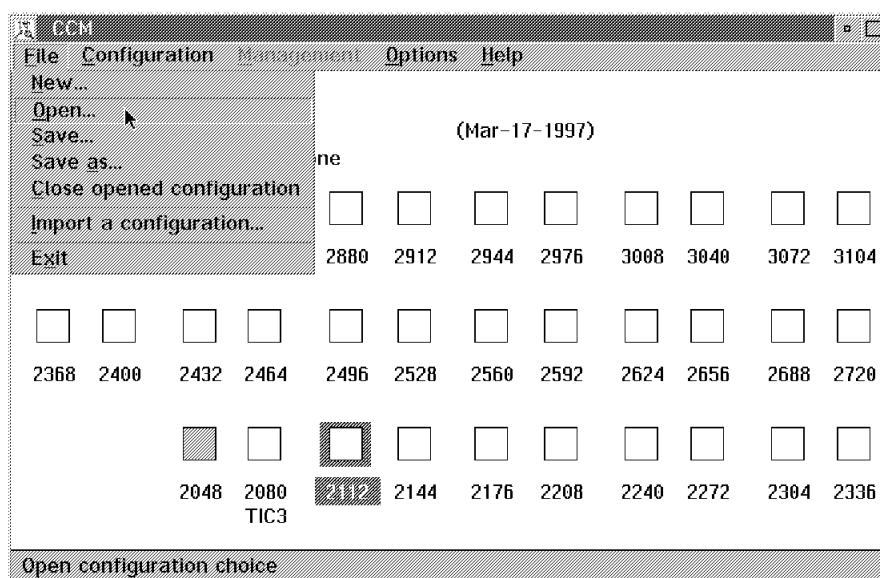


Figure 8. Main Window File Menu

- ___ 5. From the list prompted, select the configuration file, then click on **Open**

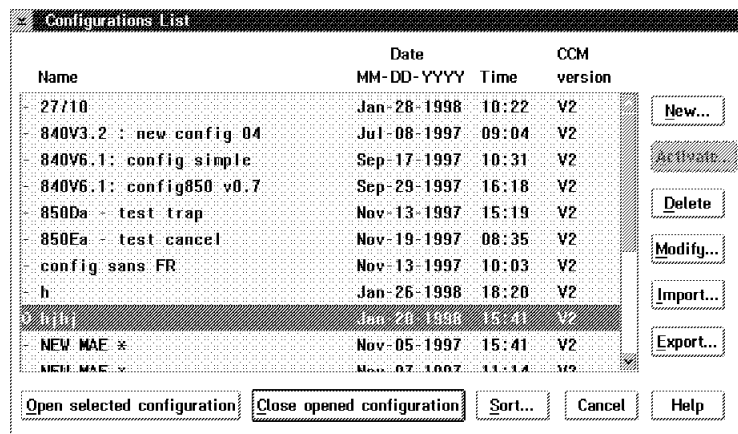


Figure 9. Configurations List

- ___ 6. When the configuration is opened, from the main window, click on **File**, then click on **Save**.

Now you are able to activate any configuration by clicking on **Open**, select the configuration from the list, then click on **Activate**.

Go To

Before starting the installation of this EC, which level of code was installed on your SP ?

- Microcode EC **F12380X** (microcode available on **CD-ROM**), go to 10.4.3, "Logging OFF from Service Processor." on page 34
- Any other EC level **prior to F12380** (microcode available on **OD**) , go to 10.4.2, "Adapter Code Loading per Processor Type." on page 32.

10.4.2 Adapter Code Loading per Processor Type.

Note

This procedure is used to define which network routing protocol is loaded per processor type. If your customer do not want to specify this information, go to 10.4.3, "Logging OFF from Service Processor." on page 34 All protocols will be loaded in all type of processors.

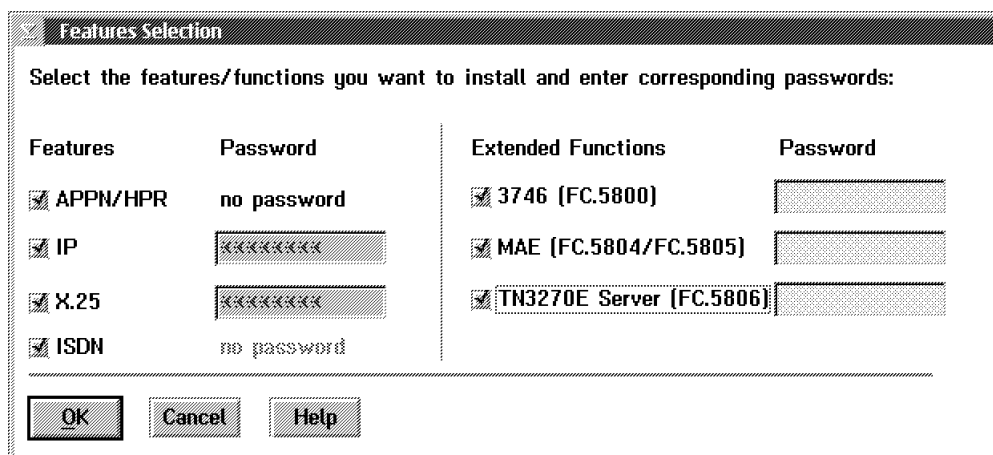
1. On the **Service Processor** menu, click on **Configuration Management**, then click on **Manage 3745/3746 Installation/Removal**
2. On the **Controller Installation** menu, select the 3746-9x0 by clicking on the **<3746-9x0>** line, then click on **"Select Feature"**.

| Controller | Type | Model | S/N | Last changes saved |
|------------|----------------------|-------|------------|--------------------|
| BS8-810L | <3745 not installed> | 3746 | 950 (APPN) | 12-34567 |
| BS FVT | 3745 | 900 | BS-24681 | <Not saved> |
| | 3746 | 900 | BS-24681 | <Not saved> |
| <New> | <3745 not installed> | | | |
| | <3746 not installed> | | | |
| <New> | <3745 not installed> | | | |
| | <3746 not installed> | | | |
| <New> | <3745 not installed> | | | |
| | <3746 not installed> | | | |

Buttons: Add... Save... Remove... Clean... Change... Repair... Select Feature Cancel Help

Status: 3746 M.E.S. 900->950

3. On the **Feature Selection** menu, click on **OK**.



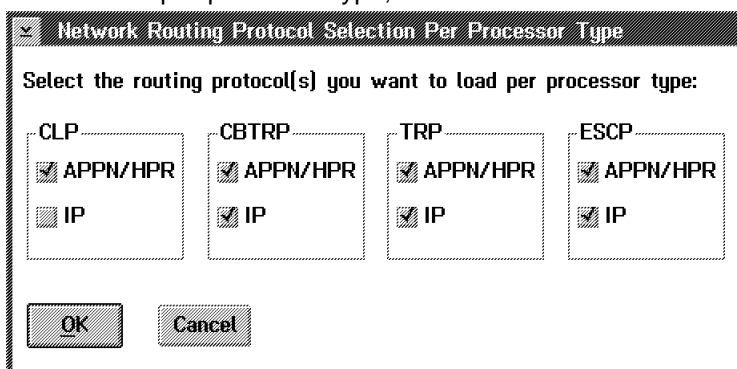
Features Selection

Select the features/functions you want to install and enter corresponding passwords:

| Features | Password | Extended Functions | Password |
|--|-------------|--|----------|
| <input checked="" type="checkbox"/> APPN/HPR | no password | <input checked="" type="checkbox"/> 3746 (FC.5800) | |
| <input checked="" type="checkbox"/> IP | xxxxxxx | <input checked="" type="checkbox"/> MAE (FC.5804/FC.5805) | |
| <input checked="" type="checkbox"/> X.25 | xxxxxxx | <input checked="" type="checkbox"/> TN3270E Server (FC.5806) | |
| <input checked="" type="checkbox"/> ISDN | no password | | |

OK Cancel Help

4. According to the customer's requirement, On the **Network Routing Protocol Selection Per Processor Type** menu, disable or enable the protocol loaded per processor type, then click on **OK** button.



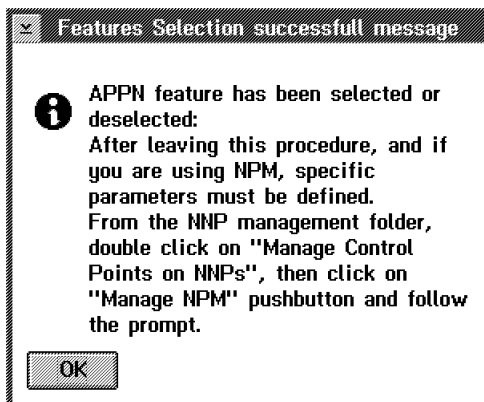
Network Routing Protocol Selection Per Processor Type

Select the routing protocol(s) you want to load per processor type:

| CLP | CBTRP | TRP | ESCP |
|--|--|--|--|
| <input checked="" type="checkbox"/> APPN/HPR | <input checked="" type="checkbox"/> APPN/HPR | <input checked="" type="checkbox"/> APPN/HPR | <input checked="" type="checkbox"/> APPN/HPR |
| <input type="checkbox"/> IP | <input checked="" type="checkbox"/> IP | <input checked="" type="checkbox"/> IP | <input checked="" type="checkbox"/> IP |

OK Cancel

5. Read the information message, then click on **"OK"** button.



Features Selection successfull message

i APPN feature has been selected or deselected:
 After leaving this procedure, and if you are using NPM, specific parameters must be defined.
 From the NNP management folder, double click on "Manage Control Points on NNPs", then click on "Manage NPM" pushbutton and follow the prompt.

OK

6. When completed, click on **"OK"** and perform a general IML to activate the feature installed, then go to 10.4.3, "Logging OFF from Service Processor." on page 34

10.4.3 Logging OFF from Service Processor.

- ___ 1. On **MOSS-E View** window, click on **Program**.
- ___ 2. Click on **LOG OFF MOSS-E**.

11.0 Test Procedures

Not applicable.

12.0 Field Updating

None.

After Installation (13-15)

13.0 Publications Update

None.

14.0 Parts Disposition

If during the installation of this EC you had to remove an optical disk drive, you **MUST RETURN** this Optical Disk Drive following the instructions given on the Returned Material Equipment Report (RMER) provided with this FBM.

Return Container To :- Ship To Code 788 6XA

IBM NEDERLAND N. V.
C.O. NEDLOYD DISTRIBUTION CENTER
WESTPOORT B.V.
SCHARENBURG 1, 1046 BA AMSTERDAM
NEDERLAND.

The LIC (Optical Disk) is declared as Sensitive parts. Keeping the Master and Back-up Disks, RETURN all extra Optical disks to your local Branch office, to be returned to plant of Manufacturing HAVANT.

| | | | | | | |
|-------------|------------------------|------------------------|------------------------|--|--|--|
| 3746 FBM | PN 26L0125 34 of 38 | EC F12710 29 May 98 | EC F34775 15 Jun 98 | | | |
|-------------|------------------------|------------------------|------------------------|--|--|--|

15.0 Machine Records

- Install updated machine history provided.
- Report the installation and quality according to the existing procedure.

16.0 Appendix A. ESCON Configuration.

Very Important

Since EC D22560, the functions used to define the ESCON resources have changed:

- Up to now, you could use:
 - Either the EGA tool (level 3.6, stand-alone tool). or
 - the "Manage ESCON Processors" (function accessible from the 3746-9x0 menu).
- Now, to configure your ESCON processors, a new function has been developed and added on the service processor:
 - "Configure ESCON Processors".
 Invoking this function, you will use EGA (local, level 3.8).

A new version of the EGA tool (level 3.8, stand-alone tool) is also available. With this version you can export/import a configuration to/from a diskette.

Note: The "Manage ESCON Processors" function is now ONLY used to:

1. Display the lines status.
2. Display the stations status.
3. Manage the ESCON couplers status.

To be able to modify the ESCON configuration, save or re-enter your ESCON parameters as follows:

1. How did you define the ESCON resources?

If you have defined your ESCON resources using:

- The EGA tool (3.6), go to 5 on page 37.
- "Manage ESCON processors" function, go to 2.

2. Record Your ESCON Configuration Parameters:

On your service processor:

- a. From the 3746-9x0 menu, click on **Configuration Management**.
- b. Double click on **Manage ESCON processors** and use this function to display and record your configuration parameters on a paper sheet, then go to 3.

3. Install the EGA Tool (3.8):

Obtain EGA 3.8 from your SE, then install on a PS/2 (or equivalent and running OS/2). Follow the installation instructions given in the READ EGA file (accessible from MKTTOOLS).

- ___ 4. Re-enter your ESCON Resources Definition: Using the EGA tool, re-enter you ESCON resources according to the parameters recorded in 2, then go to 6 on page 37.
- ___ 5. Install the New Version of EGA (3.8):

Note: To be able to recover the configuration data, install this new version on the same PS/2 where the old version was installed. Make sure that the configuration in EGA matches your current configuration. Obtain from your SE and replace your EGA with the new version (3.8) of the EGA tool. Follow the instructions given in the READ EGA file.
- ___ 6. Export your ESCON Configuration using EGA:

Using EGA, export your configuration on a diskette:

 - ___ a. On the EGA primary screen, click on **Subset**.
 - ___ b. Click on **Export** and insert a diskette to record the configuration, then
 - ___ c. Go to 7 and ask your CE to upgrade the LIC to EC F12430
- ___ 7. Install Driver EC F12430:

Use the Installation instructions PN P26L0125, go to "Installation (Steps 9-12)" on page 7.

Note: When migrating from driver EC D22510"K" to EC F12430, the current ESCON configuration is saved. When the installation is completed, using the 'Manage ESCON Processors' function you can display this configuration by selecting the option 'Display old configuration'. This can help you to check what you recorded manually in 2.
- ___ 8. Import your Configuration:

From the 3746-9x0 menu:

 - ___ a. Click on **Configuration Management**.
 - ___ b. Double click on **Configure ESCON Processor**.
 - ___ c. Click on **OK**.
 - ___ d. Click on Subset.
 - ___ e. Click on **Import** and insert the diskette which contains the configuration file saved in 6.
- ___ 9. Activate your Configuration:
 - ___ a. Open the imported configuration, and save it.
 - ___ b. Answer 'YES' to the message asking you to transmit the configuration to the ESCP.
 - ___ c. Click on **OK** on the message explaining that a re-iml of the machine is required.
 - ___ d. Then, Re-IML your 3746-9x0

End of instructions.