

Field Feature Bill of Material

PN 29H4171

**Install Network Node Control Point (FC 5022)
on IBM 3746-900.**

Written by: J. Michaut
Checked by: C. Franoux
Approved by: A. Badino
Reviewed by: B. Smith

3746 FFBM	PN 29H4171 1 of 14	EC D55901A 22JAN96	EC E63492A 30AUG96			
--------------	-----------------------	-----------------------	-----------------------	--	--	--

Before Installation (Steps 1-8)

1.0 Machines Affected

3746 Model 900 *This feature should only be applied on the machine serial for which it is specified.*

2.0 Related BMs and ECs

2.1 Prerequisites

- If Service Processor type 9577:
Hard Disk Drive Exchange - FC 5026 (FFBM 29H4179)
- Controller Rack - FC 5023 (FFBM 29H4174).
- Controller Bus and Service Processor Type 2 - FC 5019 (FFBM 58G5516)
- Microcode level: EC D22560 or higher.

2.2 Concurrent ECs

None.

2.3 Companion ECs

None.

3.0 BMs to be Installed

Network Node Control Point (NNCP) FFBM 29H4170

4.0 Preparation

1. Familiarize yourself with the purpose and details of the installation instruction before negotiating machine time with the customer.
2. Check all items listed on the BM(s) to determine that all parts have been received.
3. The set up of the NNCP has no impact on customer operations.
4. Obtain from the customer the **Parameter worksheet** :

5.0 Programming

None.

6.0 Purpose and Description

6.1 Purpose

To support the APPN on 3746-900.

6.2 Description

The installation of the NNCP is divided into three main procedures:

1. Installing the Network Node Processor Code on the Service Processor
2. Installing the system unit
3. Installing the code on the network node processor

Note: To reduce the MES installation time it is recommended that you Install the Network Node Processor Code on the Service Processor and the system unit at the same time.

7.0 Installation Time

FFBM	Machine Hrs.	System Hrs.	Nbr of CEs
29H4170	0.0	0.0	1

No impact on 3745 customer operations.

8.0 Tools/Material Required

None.

Installation (Steps 9-11)

9.0 Safety

See *Safety Notices* located at the beginning of the:

- *3745 Communication Controller Models 210 to 61A Maintenance Information Procedures*, SY33-2054, or
- *3745 Communication Controller Models 130 to 17A Maintenance Information Procedures*, SY33-2070

10.0 Details of Installation.

10.1 Installing the Network Node Processor Code on the Service Processor

Notes

For any unexpected message or error concerning the service processor, go to **Chapter 4. Problem Determination** of the:

- *Service Processor Installation and Maintenance Based on 3172*, SY33-2111,
- *Service Processor Installation and Maintenance Based on PS/2 9585*, SY33-2109, or
- *Service Processor Installation and Maintenance Based on PS/2 9577*, SY33-2095.

10.1.1 Shutting Down the Service Processor

Note

Before powering OFF the Service Processor, use this procedure to properly close all the active functions.

1. On the "MOSS-E view" window click on "**Program**".

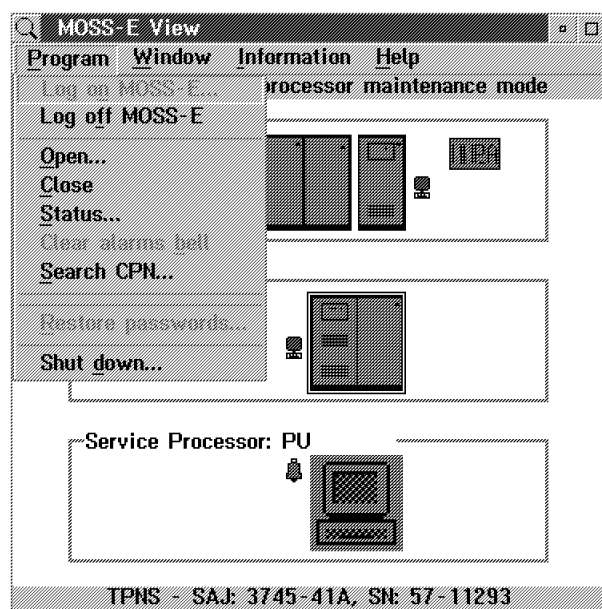


Figure 1. Program Pull Down Menu

- ___ 2. Click on "**Shut down**", then enter the Service Processor maintenance password (default is IBM3745) and click on "**OK**".

You are now able to Power OFF the Service Processor.

10.1.2 Update the Licensed Internal Code

- ___ 1. Power **OFF** the service processor (If not already done).
- ___ 2. Install the **Service Processor installation diskette 1** in the diskette drive.
- ___ 3. Power **ON** the service processor.
- ___ 4. Install the **Licensed Internal Code** optical disk, at EC D22560 or higher, in the optical drive.
- ___ 5. On the first screen displayed, press "**Enter**".
- ___ 6. From the primary window select option **5** "**Update Licensed Internal Code when installing a Network Node Processor**".

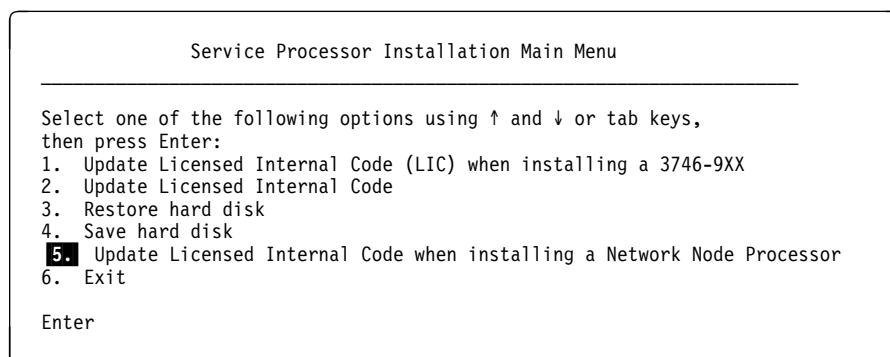


Figure 2. LIC Installation Main Menu

- ___ 7. Press **"Enter"** to start the process then follow the prompts.
 - ___ 8. Wait (Up to 45 minutes) for the message: 'Operation successfully completed'.
- Note:** If you have two 3746-9x0s connected to the same Service Processor, using the arrow keys, select the target 3746-9x0 code to be updated, and pressing the space bar, specify if you want to update the code for the selected 3746-9x0 (by default the two 3746-9x0 are selected).
- ___ 9. At the end, select **"Exit"** from the primary window and follow the prompts.

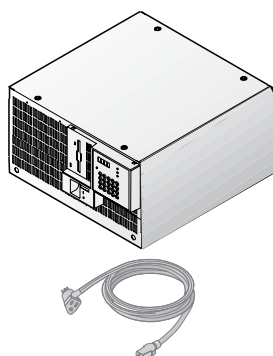
10.2 Installing the System Unit

10.2.1 Installing the Network Node Processor

- ___ 1. **Unpack** Your Network Node Processor

You need the following items to complete this installation:

- ☐ Network Node Processor and Power Cord
- ☐ Publications and diskette



- ___ 2. On the network node processor, remove the four foot pads and screws.

3746 FFBM	PN 29H4171 7 of 14	EC D55901A 22JAN96	EC E63492A 30AUG96			
--------------	-----------------------	-----------------------	-----------------------	--	--	--

- 3. Open the front and rear doors of the controller expansion, slide the network node processor unit in the rack from the rear side.

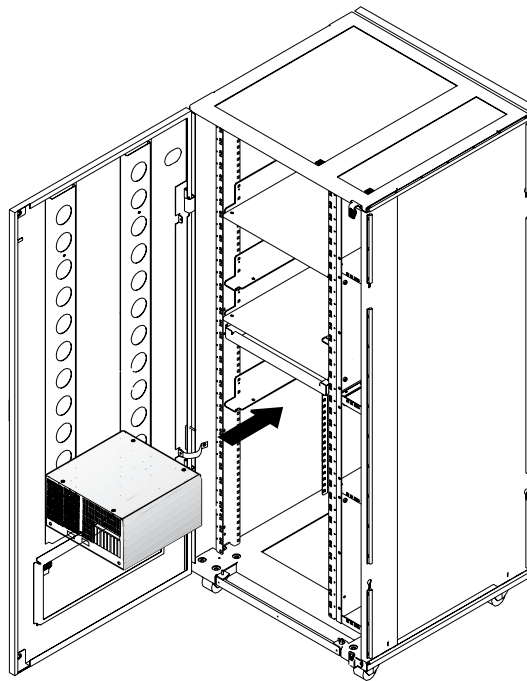
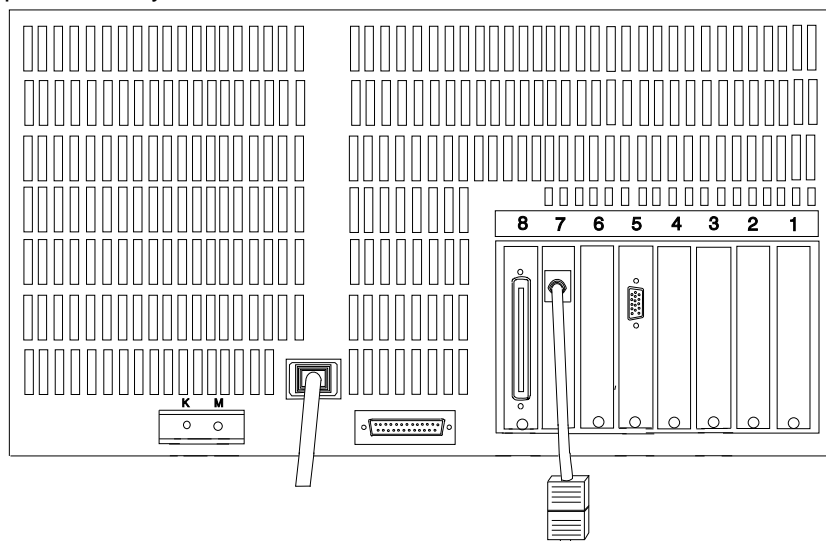


Figure 3. Installing the Network Node Processor Unit in the Rack (Rear Side)

10.2.2 Connecting the Network Node Processor

- 1. Set the **ON/OFF Switch** to off (O) on the network node processor panel.
- 2. Connect the keyboard to the connectors (K) and (M) of the NNP, then place the keyboard in the nearest free area.



- ___ 3. Plug connector **1** of cable **A** (PN 6339088) to cable **B** (PN 60G1066).
- ___ 4. Using a sticker, identify the cable **A** as the "network node processor cable" and plug connector **2** to **any plug** of the 8228 from **1 to 8**
- ___ 5. Plug cable **B** to **slot 7** of the network node processor.
- ___ 6. Connect the power cord **3** .(PN 58G5783) to the network node processor and to J2 of the ac outlet distribution box.
- ___ 7. Turn the **ON/OFF Switch ON** to **(I)** on the network node processor panel.

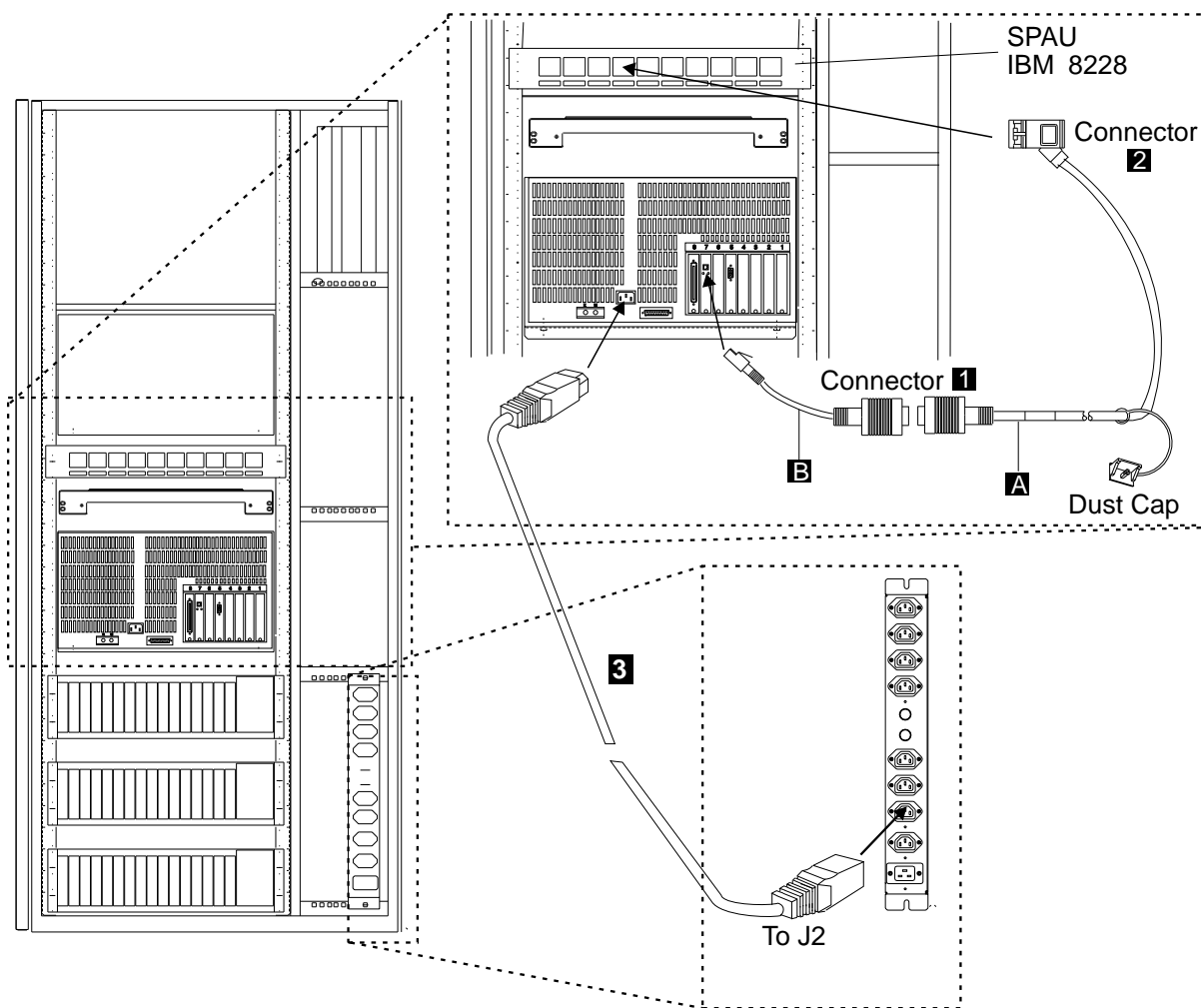


Figure 4. Connecting the Network Node Processor

10.3 Installing the Code on the Network Node Processor

- ___ 1. Double click on the 3746-900 icon where you are going to install the APPN feature.
- ___ 2. From the 3746-9x0 menu, click on **Network Node Processor (NNP) Management**.
- ___ 3. Double click on **(M) Install/Remove/Change/Restore LIC/NNP**.
- ___ 4. Select **NNP-A**, then click on **Install NNP**.
- ___ 5. Click on **OK**.
- ___ 6. If necessary, modify the **IP address** and the **Subnet mask** for the service processor and the network node processor according to the values recorded by the customer on the parameter worksheet. Otherwise keep the default values and record the hostnames for later use.

	IP address	Subnet mask	Hostname
Service Processor:	192.9.200.1	255.255.255.240	SP34567
NNP-A:	192.9.200.2	255.255.255.240	CA034567
NNP-B:		255.255.255.240	CB034567
3746 NN:	192.9.200.4	255.255.255.240	

OK Cancel Help

Figure 5. Network Node Processor IP Parameters Menu

- ___ 7. Click on **OK**.
- ___ 8. Insert the **Network Node Processor installation diskette** in the diskette drive of the **service processor**.
- ___ 9. Click on **OK**.
- ___ 10. When the process is completed, perform the following steps, see Figure 6 on page 11, then click on **OK**.

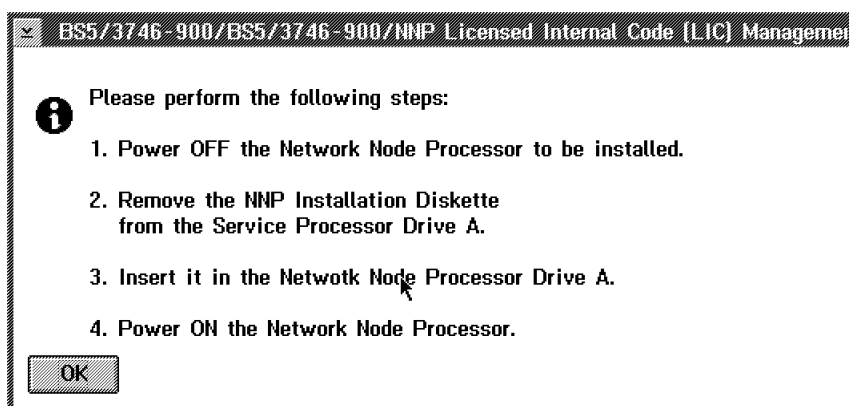


Figure 6. NNP-A Licensed Internal Code Management

- ___ 11. To follow the progress of the installation, read the messages prompted in **'Messages'** box.

Note: It takes about 40 minutes to complete the installation

- ___ 12. As indicated in the following information message, remove the Network Node Processor installation diskette, then click on **OK**.

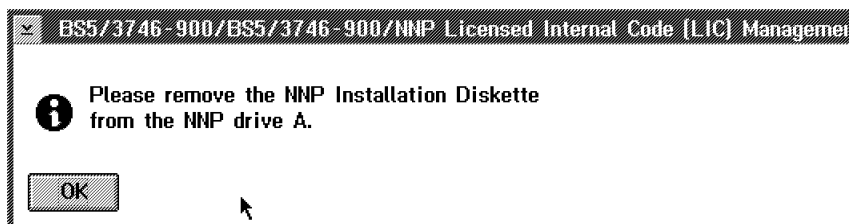


Figure 7. NNP-A Licensed Internal Code Management Information Message

- ___ 13. The installation is completed, click on **OK**.

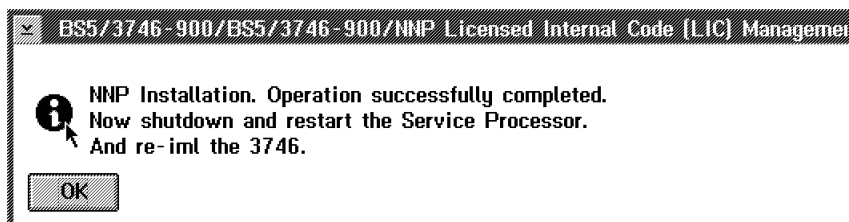


Figure 8. Network Node Processor LIC Management Information Message

- ___ 14. Click on **Close**.
- ___ 15. Shutdown and restart the service processor and re-impl the 3746-9x0

10.4 Returning the Machine to the Customer

- 1. Inform the Customer that the machine is now ready to receive the APPN configuration.

11.0 Test Procedures

No test required.

After Installation (steps 12-15)

12.0 Field Updating

None.

13.0 Publications Update

None.

14.0 Parts Disposition

14.1 Purchased Machines

Refer to the parts ownership matrix to determine the correct owner of removed/unused parts.

- For EMEA/APG/AG Areas, refer to *Hardware and General Service Code Description*.
- For Domestic Areas, return parts to the customer.

15.0 Machine Records

- Install the new **MACHINE HISTORY** supplied.
- Report installation and quality problems using existing procedures.

End of instructions.

3746 FFBM	PN 29H4171 14 of 14	EC D55901A 22JAN96	EC E63492A 30AUG96			
--------------	------------------------	-----------------------	-----------------------	--	--	--