



## Field Feature Bill of Material (FFB/M)

### Convert a 2220 Model 300

### to a 2220 Model 500

Written by	Housieaux G
Checked by	Housieaux G
Approved by	Vignolo R
Reviewed by	Tlsty T



## BEFORE INSTALLATION (Steps 1- 8)

### Net Priced Feature

All parts removed from this machine are IBM property and must be returned to IBM.

## 1.0 Machines affected:

2220 MODEL 300

## 2.0 Prerequisite/Concurrent/Companion:

### 2.1 Prerequisite:

None

### 2.2 Concurrent - (Must be installed together)

None

### 2.3 Companion - (May be installed separately)

None

## 3.0 B/M(S) to be installed:

### 3.1 Install the following B/Ms:

B/M 80G1451 - Convert a 2220 model 300 to 500.

#### 3.1.1 Additional B/Ms.

If the 2220 300 is in Duplex mode, (FC 5350, Switch Back-up installed), the following FFB/M must be installed concurrently with the model conversion.

FFB/M 80G1452 - Convert the Back Up Switch feature.  
FC 5350 to FC 5340

## 4.0 Preparation.

1. Familiarize yourself with the purpose and details of the installation instruction prior to obtaining the customer machine time commitment.
2. Check all the items and count the parts listed on the B/M to be installed to determine that all the parts were received
3. Additional info :
  - Ensure that the customer created a new version of the NCT, and is ready to be loaded in the 2220 after the model upgrade.
  - Inform the customer that the node will be unavailable (power off) during the model upgrade.
4. Before starting the installation of this MES, call your TNSC (Network Support Center)

## 5.0 Programming.

The customer has to order to IBM (if not already done) the upgrade of the *5622-388 IBM N Ways BroadBand switch Control Program* licence.

The Node Configuration will be updated as part this MES.

It is the customer responsibility to export this configuration to the focal point if required.

## 6.0 Purpose and description.

### 6.1 Purpose.

Convert the 2220 model 300 to a model 500.

### 6.2 Description.

Exchange the Switch Module(s).

PN 80G1451 3 of 20	EC E27799 08Aug95				
-----------------------	----------------------	--	--	--	--



## 7.0 Installation Time.

FFB/M	Machine Hrs.	System Hrs.
80G1451	00.5	00.0
80G1452	00.2	00.0
Preparation	00.5	
-----	----	
Total	1.0	(Simplex machine)
	1.2	(Duplex machine)

## 8.0 Special tools and/or materials required:

ESD kit P/N 6428316

Isopropyl Alcohol

---

## INSTALLATION (Steps 9-11)

### 9.0 Safety.

Review **Safety Notices** and the **Safety Inspection Procedures** located at the beginning of the *IBM 2220 Nways BroadBand Switch Service Guide SY33-2106*.

**2220 Front View.**

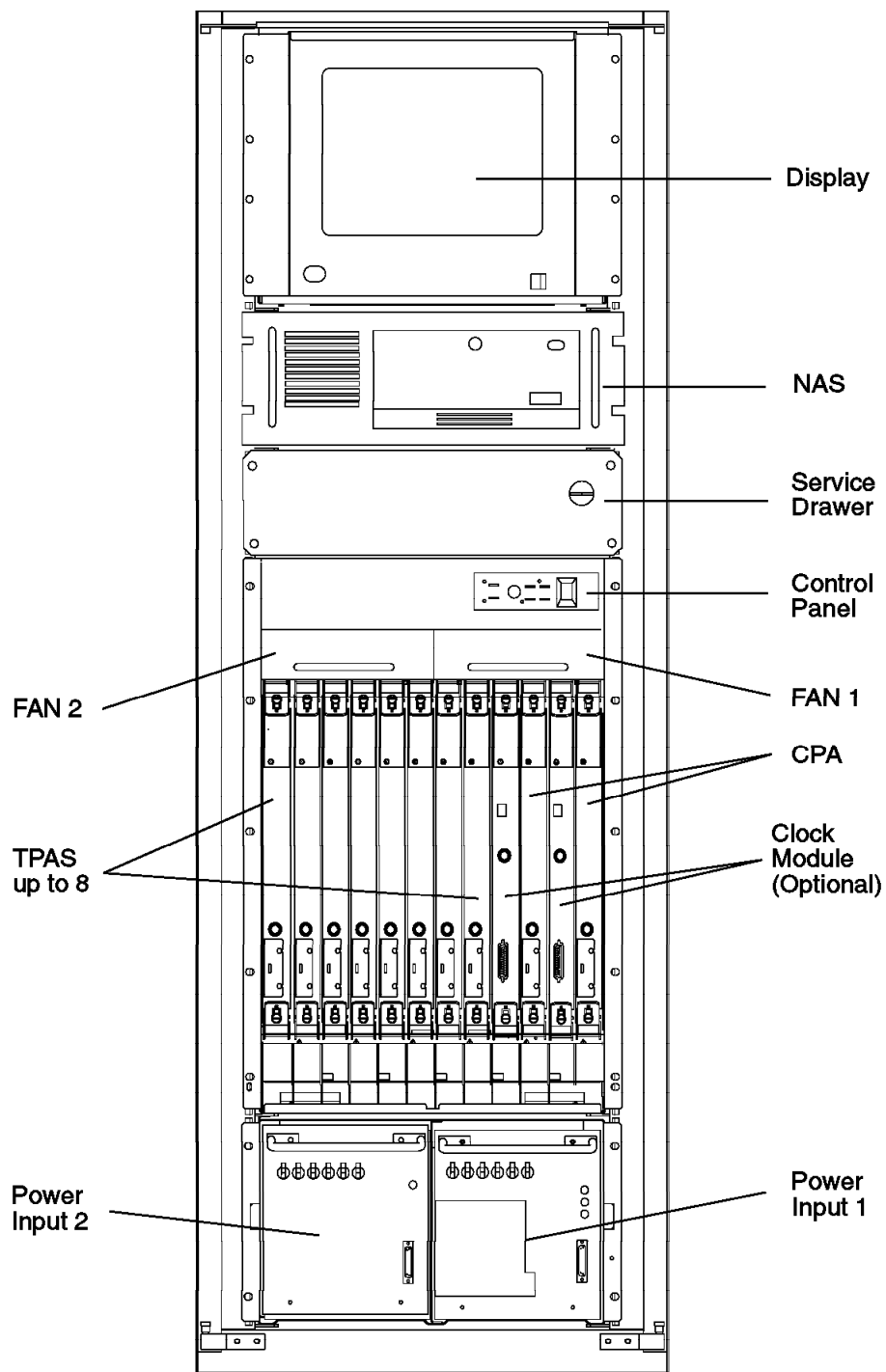


Figure 1. 2220 Front View, Location



2220 Rear View.

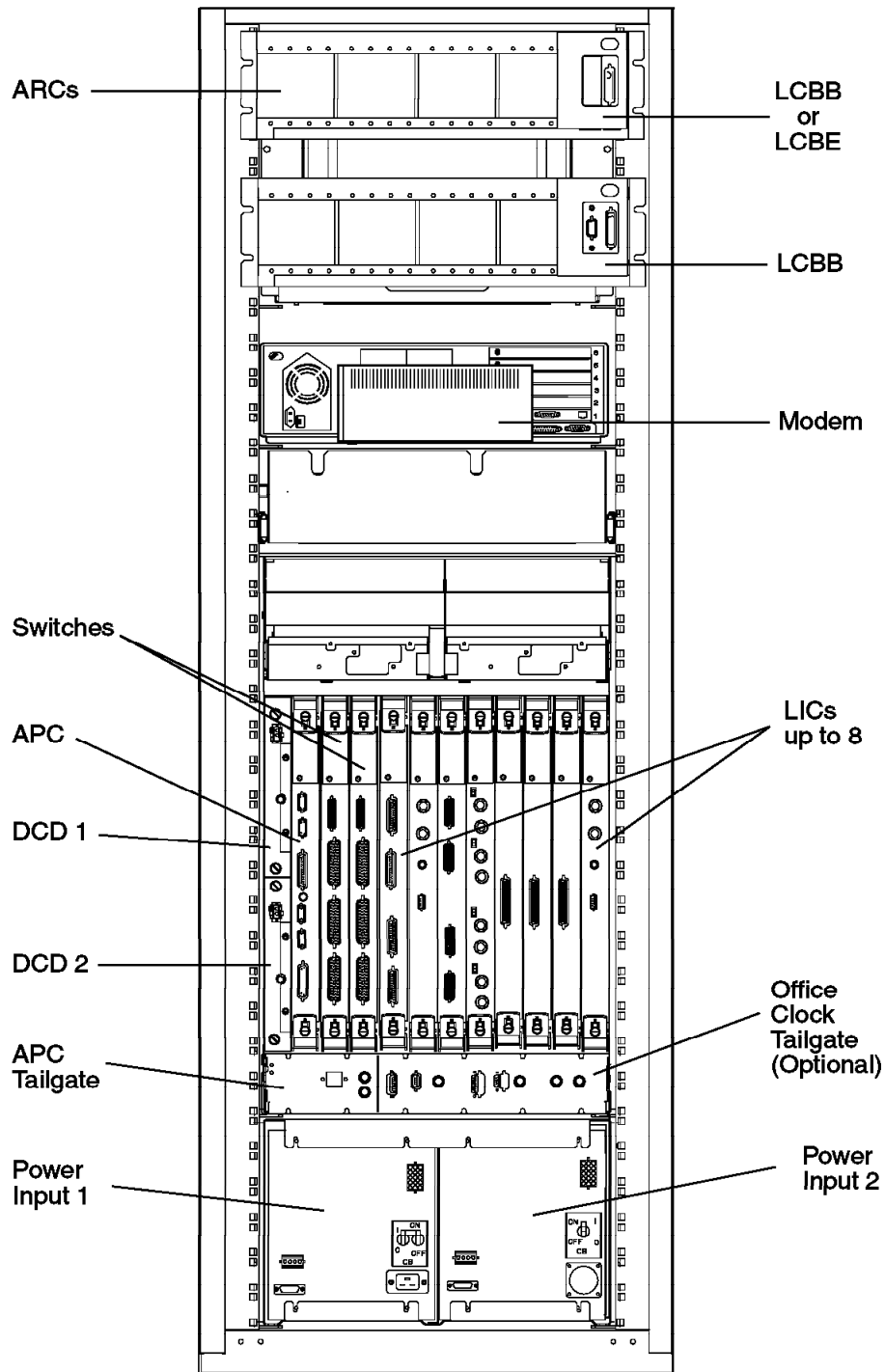


Figure 2. 2220 Rear view, Location



## 10.0 Details of installation.

After the model conversion, you will update the configuration (Working) to reflect the model of the 2220. To prevent any mismatch between the configuration files , (Active and Working) you are going to Export and Import the Active configuration before any changes.

- \_\_\_ 1. Ask the Network Operator to stop traffic on the node.
- \_\_\_ 2. If the *Nways Switch Screen, (See Figure 4.)* is displayed go to 10.1, “Export the Active Configuration..”  
Otherwise proceed.
- \_\_\_ 3. On the NAS desktop, **Double click** on the **NWays Switch Services** Icon.

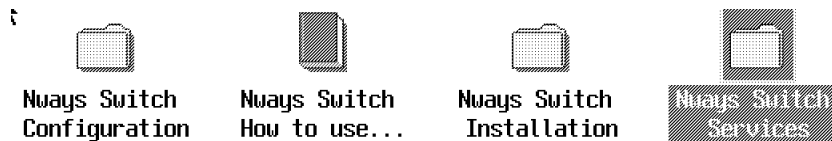


Figure 3. NAS desktop

- \_\_\_ 4. On the **Nways Switch Services** Icon view, double click **Nways Switch Resource Control Local**

## 10.1 Export the Active Configuration.

- \_\_\_ 1. Click on **Nways Switch** on the menu bar,

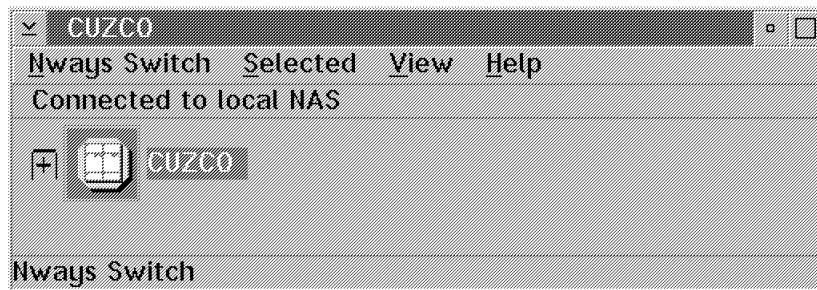


Figure 4. N Ways Switch screen.

- \_\_\_ 2. Click on **Export Configuration file**, then on **Whole N Ways Switch**.

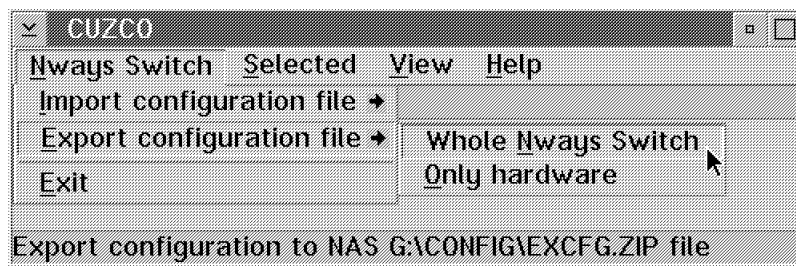


Figure 5. Export Active configuration.

PN 80G1451 7 of 20	EC E27799 08Aug95				
-----------------------	----------------------	--	--	--	--



- \_\_\_ 3. On the message window, **Click** on **OK**.
- \_\_\_ 4. Wait for the completion message.  
The *Active Configuration* is exported to the **G:CONFIGEXCFG.ZIP** file.  
**Click** on **OK**.





## 10.2 Import the Active Configuration

- \_\_\_ 1. On the NAS desktop, **Double Click** on the **Nways Switch Configuration** Icon.

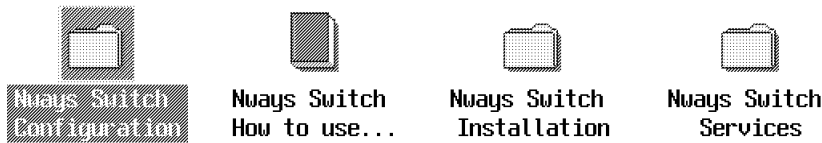


Figure 6. NAS desktop

- \_\_\_ 2. On the Icon View, **Double click** on **NCT** Icon. (N Ways Switch Configuration tool).

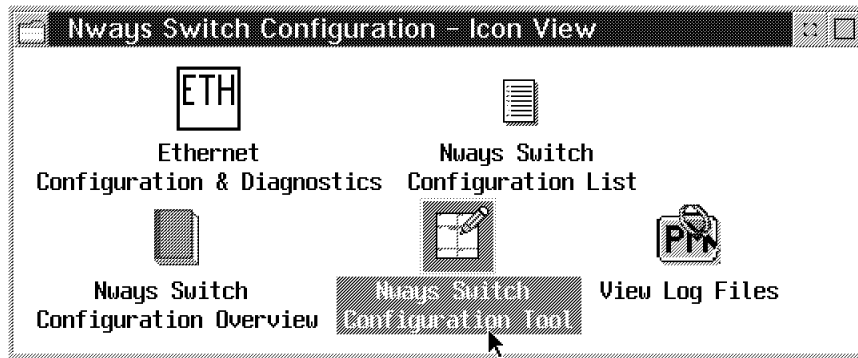


Figure 7. N Ways Switch Configuration -Icon view.

- \_\_\_ 3. On the **N Ways Switch Configuration Tool** window, **Click** on **Selected** on menu bar.

**Notes:**

- Ensure there is only one Icon on the window, otherwise select the Icon of the N Ways Switch you are working on.
- In certain configurations, the screen may be empty, (no Icon displayed). In such a case, go to step 6.

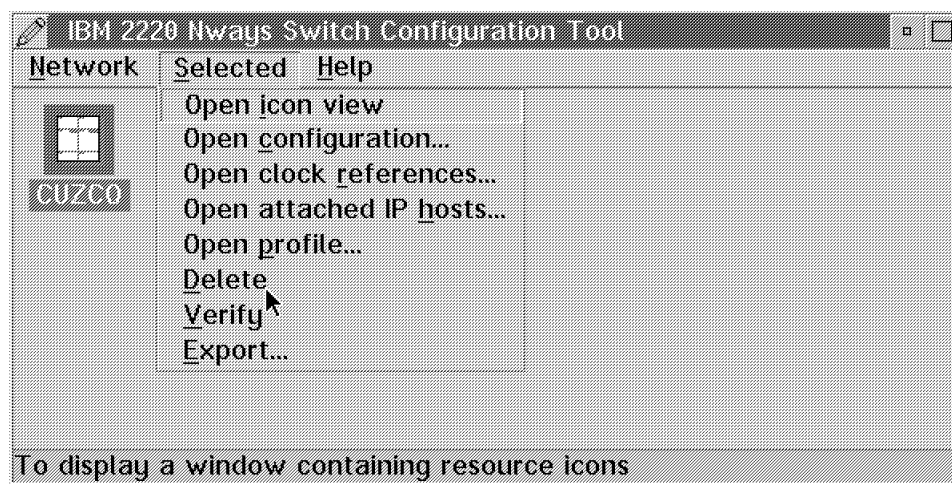


Figure 8. Delete the current Configuration.

PN 80G1451 9 of 20	EC E27799 08Aug95				
-----------------------	----------------------	--	--	--	--



- \_\_\_ 4. **Click** on **Delete** to delete the current configuration.
- \_\_\_ 5. **Click** on **Yes** to *Confirm the Delete*.
- \_\_\_ 6. When the *Delete* is completed (The ICON is erased from the screen) **Click** on **Network** on menu bar.
- \_\_\_ 7. **Click** on **Import new Nways Switch from**
- \_\_\_ 8. **Click** on **NWays Switch Configuration Tool File Format**.

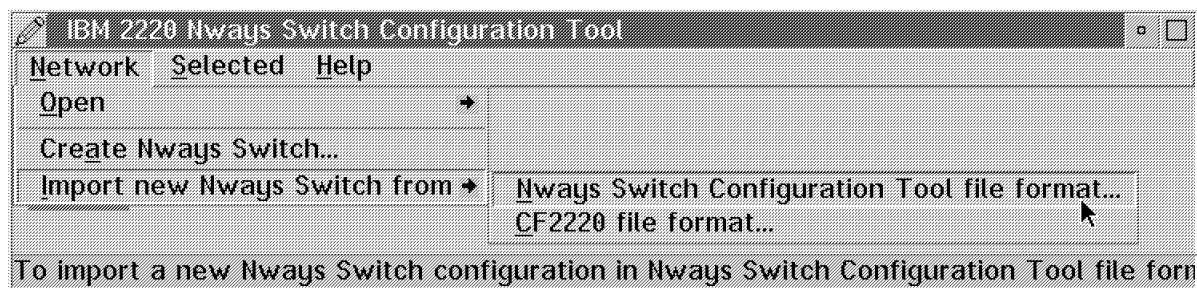


Figure 9. Select the Import mode.

- \_\_\_ 9. On *Import Window*  
Select the **G** drive.  
In *Directory* window, Double Click on **Config**.  
In *File* window, select: **EXCFG.ZIP**.
- \_\_\_ 10. **Click** on **Import**.  
Wait for completion message.
- \_\_\_ 11. **Click** on **OK**.

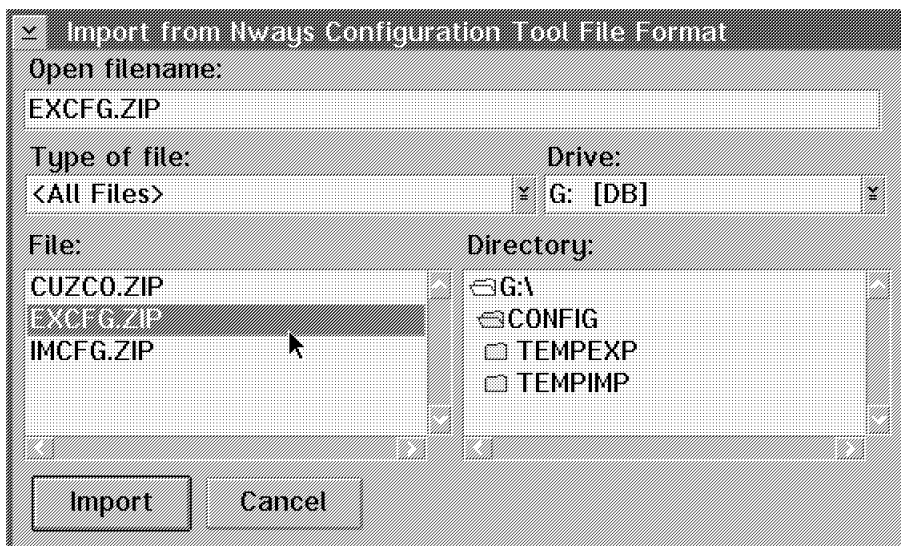


Figure 10. Import command.



## 10.3 Deactivate the N Ways Switch.

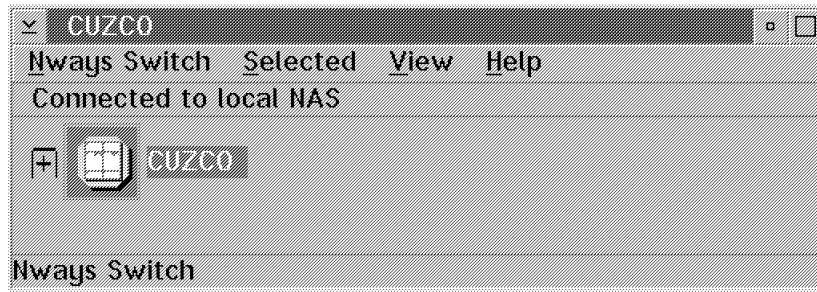


Figure 11. Nways Switch Screen.

- \_\_\_ 1. On the *Nways Switch screen*, **Click** on the RACK A Icon with the right button of the mouse, then on **Deactivate**.
- \_\_\_ 2. **Click** on **Yes** on the warning message.

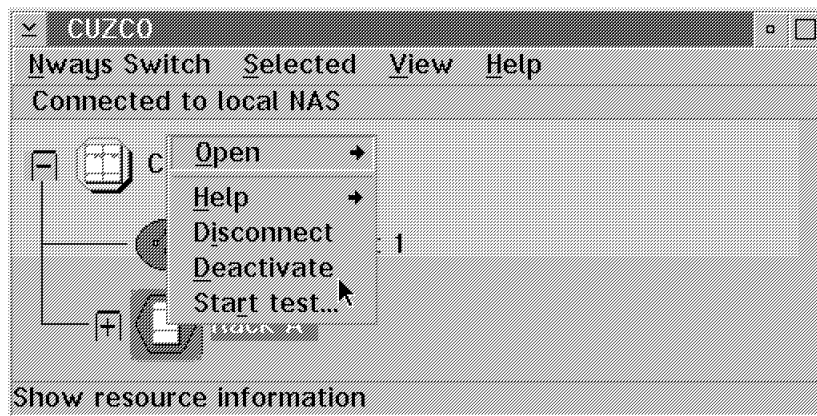


Figure 12. Deactivate the Nways Switch.

- \_\_\_ 3. Wait for the completion message, **Click** on **OK**.  
Wait for the small triangle on the Rack A Icon.
- \_\_\_ 4. When the N Ways Switch is deactivated, open the rear and the front doors of the rack.

## 10.4 Removing the Basic Switch module.

- \_\_\_ 1. Locate the switch module in slot **9** in the Rear side of the machine.

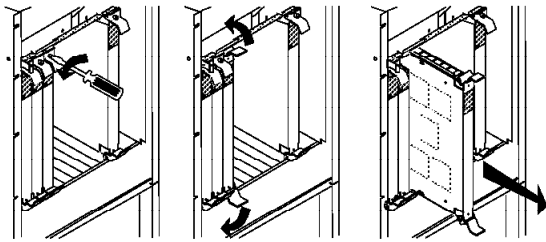


Figure 13. Module removal.

- \_\_\_ 2. Loosen the screw on the latches.
- \_\_\_ 3. Unlock the latches as shown.
- \_\_\_ 4. Remove the module from his location.

## 10.5 Installing the switch module.

- \_\_\_ 1. Position the latches as shown,

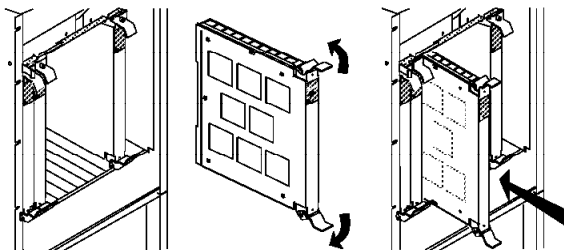


Figure 14. Module Installation.

- \_\_\_ 2. Slide the switch module, provided by the FFB/M 80G1451, in slot **9**.
- \_\_\_ 3. Secure the module by locking the latches.
- \_\_\_ 4. Tighten the screw on the latches.
- \_\_\_ 5. Ensure that the GREEN led on the new installed switch(es) is ON.

**Note:** If not, remove and re-insert the switch module. If the problem persists, go to start page of the *IBM NWay BroadBand Switch Service Guide SY33-2106*).

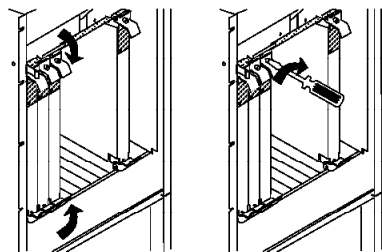


Figure 15. Secure a module.

## 10.6 Back Up Switch exchange.

If the machine is in simplex configuration ( only one switch module installed in slot 9, skip to 10.7, "Name Plate.")

If the 2220 is in Duplex configuration, (2nd switch module, FC 5350 installed in slot **10**) return to 10.4, "Removing the Basic Switch module." on page 12 and exchange the Back Up switch module in slot 10 rear side.

The new switch is provided by the FFB/M 80G1452.

## 10.7 Name Plate.

- \_\_\_ 1. At the front remove the 2220-300 name plate.
- \_\_\_ 2. Remove any adhesive residus with Isopropyl Alcohol.
- \_\_\_ 3. Affix the new name plate P/N 57G7975 provided by the FFB/M.

**Note:** Care should be taken to align the name plate with the serial number label.

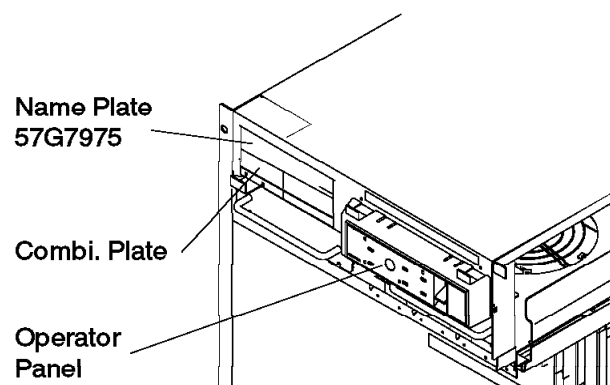


Figure 16. Name Plate

## 11.0 Test procedures:

### 11.1 Update the N Ways Switch Configuration.

- \_\_\_ 1. On the **N Ways Switch Configuration Tool** window, Click on **Selected** on menu bar.

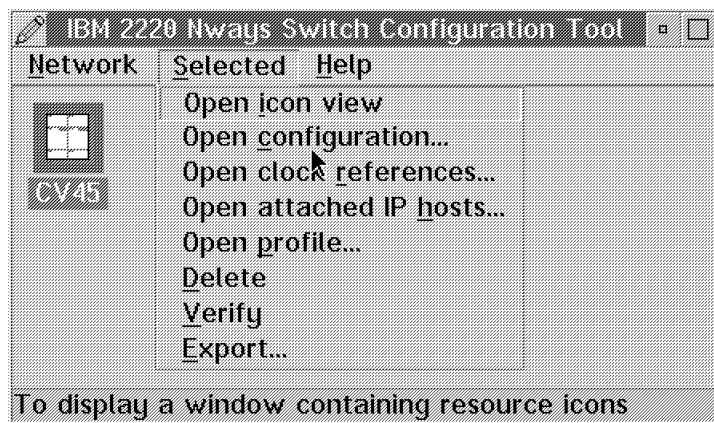


Figure 17. Update the Working Configuration.

- \_\_\_ 2. Click on **Open Configuration**
- \_\_\_ 3. Click on the *Radio button* in Front of *Model 500*  
Click on **OK**.

### 11.2 Export the Working Configuration.

- \_\_\_ 1. On the *N Ways Switch Configuration Tool* window, Click on **Selected** on menu bar, then Click on **Export**.

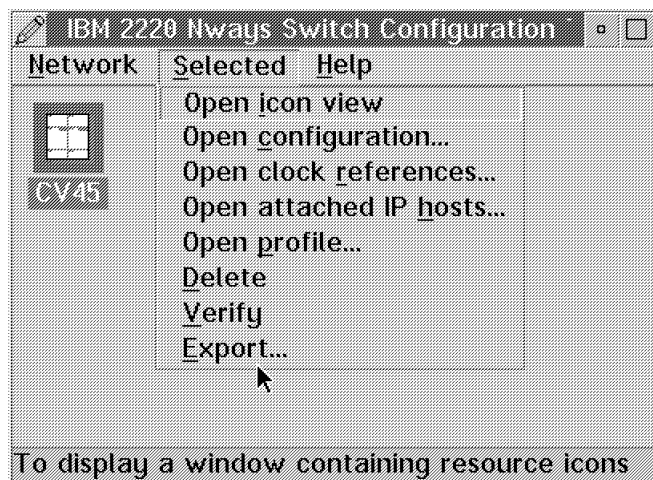


Figure 18. Export the Working configuration.

- \_\_\_ 2. On the export window :



Select the **G** drive.  
In *Directory* window, Double click on **Config**.  
In file window, select **IMCFG.ZIP**

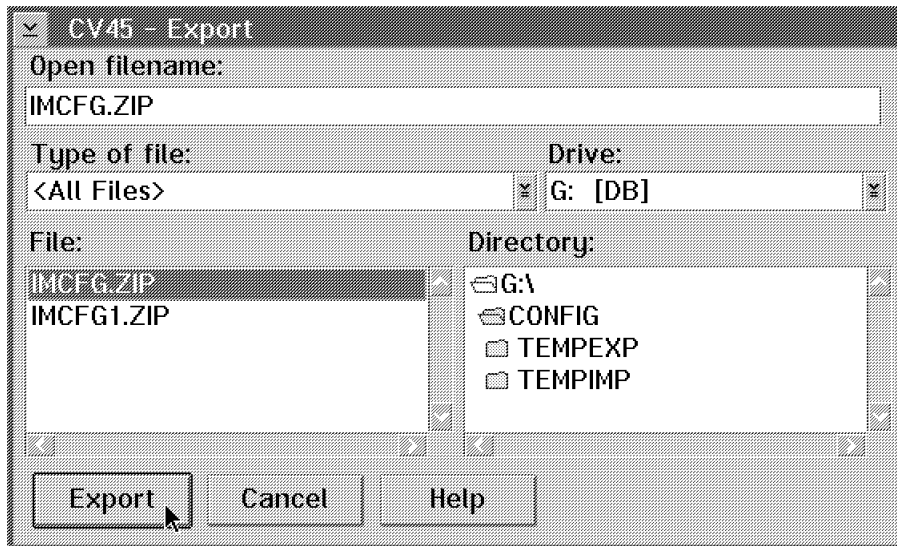


Figure 19. Export command.

- \_\_\_ 3. Click on **Export**  
Wait for the completion message.
- \_\_\_ 4. Click on **OK**.
- \_\_\_ 5. Close the *NWays Switch Configuration Tool* window. (Figure 18 on page 14.)
- \_\_\_ 6. Close the *NWays Switch Configuration -Icon View* (Figure 7 on page 9.)

## 11.3 Import the Working Configuration.

- \_\_\_ 1. On the *Nways Switch* screen Click on **NWays Switch** on the Menu Bar,

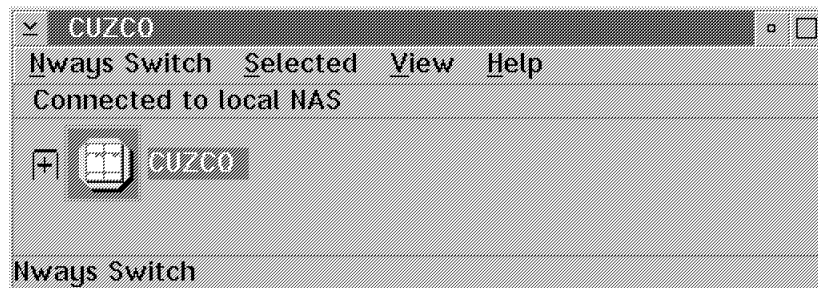


Figure 20. NWays Switch screen.

- \_\_\_ 2. Click on **Import Configuration**, then on **From Disk**

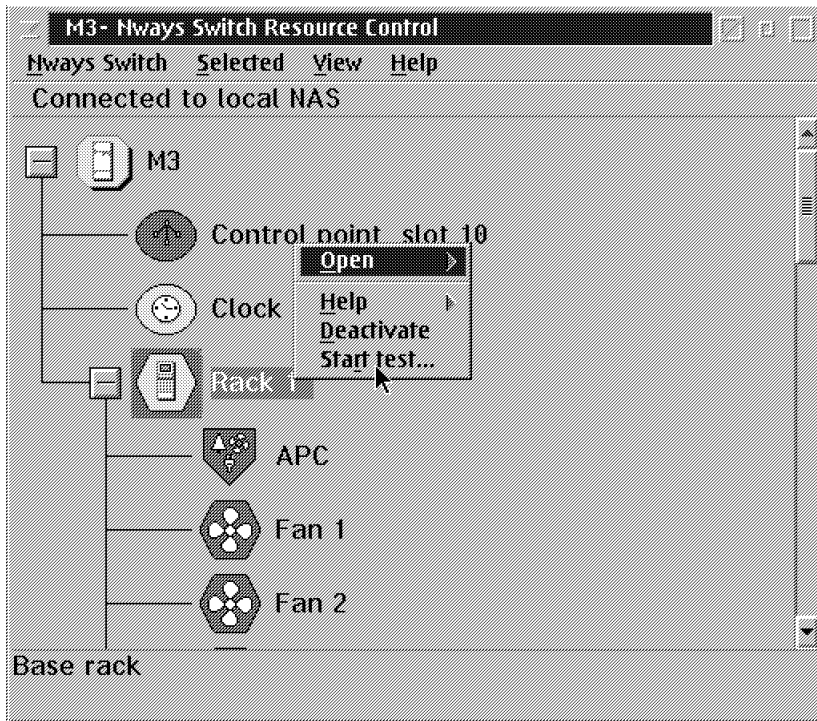


Figure 21. Import Working configuration.

- \_\_\_ 3. Wait for the completion message . **Click** on **OK**.

## 11.4 Activate the new configuration.

- \_\_\_ 1. **Click** on the Nways Switch Icon, then on **Selected** on the Menu Bar.



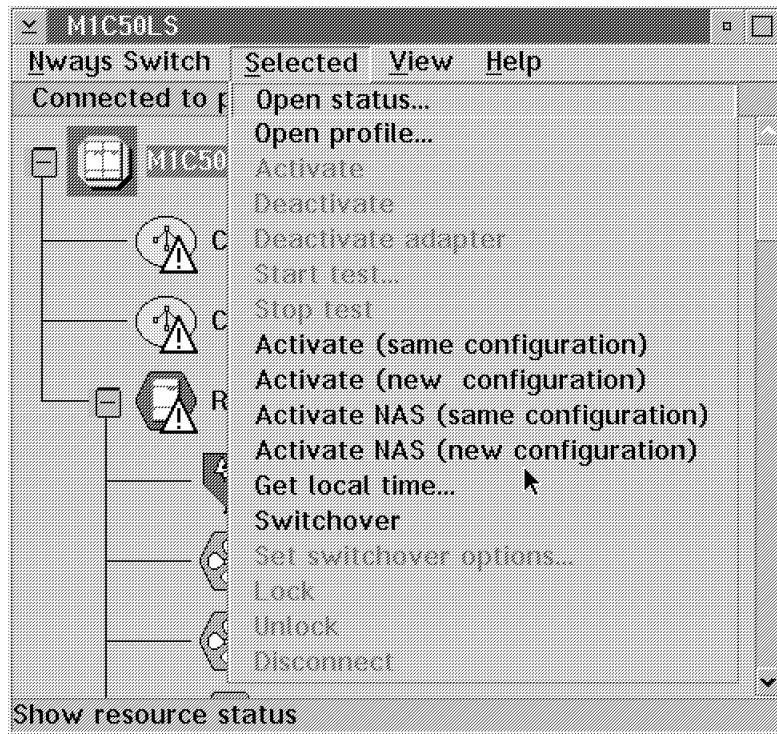


Figure 22. Activate the NAS

- \_\_\_ 2. **Click on Activate NAS (new Configuration)**  
Wait for completion message.
- \_\_\_ 3. **Click on OK**  
A NAS reboot will occur.
- \_\_\_ 4. Wait for completion message.  
All the 2220 resources will be automatically re-activated.

## 11.5 Update the NAS System.

- \_\_\_ 1. On the NAS desktop,, **Double Click** on the **NWays Switch Installation** Icon.

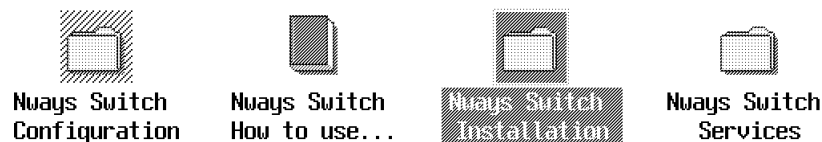


Figure 23. NAS desktop

- \_\_\_ 2. **Double Click** on **NWays Switch Installation** Icon.

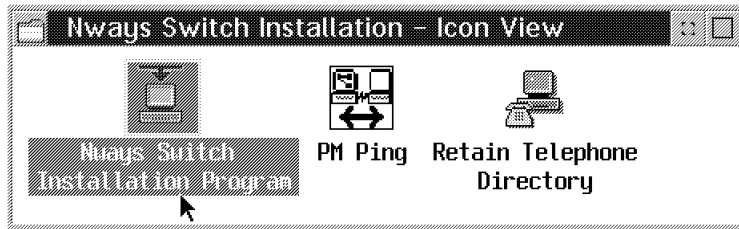


Figure 24. N Ways Switch Installation.

- \_\_\_ 3. Enter 4 to select the **Creating the Installation parameters file** option.
- \_\_\_ 4. Press PF3 to exit.
- \_\_\_ 5. When complete, close the windows.

## 11.6 Making the 2220 ready

- \_\_\_ 1. Close the front and the Rear rack doors.
- \_\_\_ 2. Ask the network operator to restart the traffic on the node.
- \_\_\_ 3. The network operator should save the new configuration to the network management focal point.

---

## After Installation (steps 12-15)

### 12.0 Field Updating

None.

### 13.0 Publications Update

None.

### 14.0 Parts Disposition

All replaced/removed parts become the property of IBM. You **MUST RETURN** these parts following the instructions given on the Returned Material Equipment Report (RMER) provided with this FFBM.

### 15.0 Machine Records

- Install the new **MACHINE HISTORY** supplied.
- Report installation and quality to existing procedures.

**End of instructions.**

PN 80G1451 19 of 20	EC E27799 08Aug95				
------------------------	----------------------	--	--	--	--

